

Weekly SLA Customer Report

Customer VEN_Production
 Database ID 35



=====
 HARDDISK USAGE VEN_PRD_ORACLE1
 =====

	Free disk space on C (GB)	Free disk space on D (GB)	Free disk space on E (GB)
26-12-2015	181	83	144
25-12-2015	0	83	145
24-12-2015	0	83	144
23-12-2015	0	83	144
22-12-2015	0	83	144
21-12-2015	0	83	145
20-12-2015	181	83	146

=====
 HARDDISK USAGE VEN_PRD_ORACLE2
 =====

	Total disk space on C (GB)	Free disk space on C (GB)	Free disk space on D (GB)	Free disk space on E (GB)
26-12-2015	400	255	300	225
25-12-2015	0	256	300	227
24-12-2015	0	256	300	226
23-12-2015	0	256	300	226
22-12-2015	0	256	300	226
21-12-2015	0	257	300	227
20-12-2015	0	257	300	228

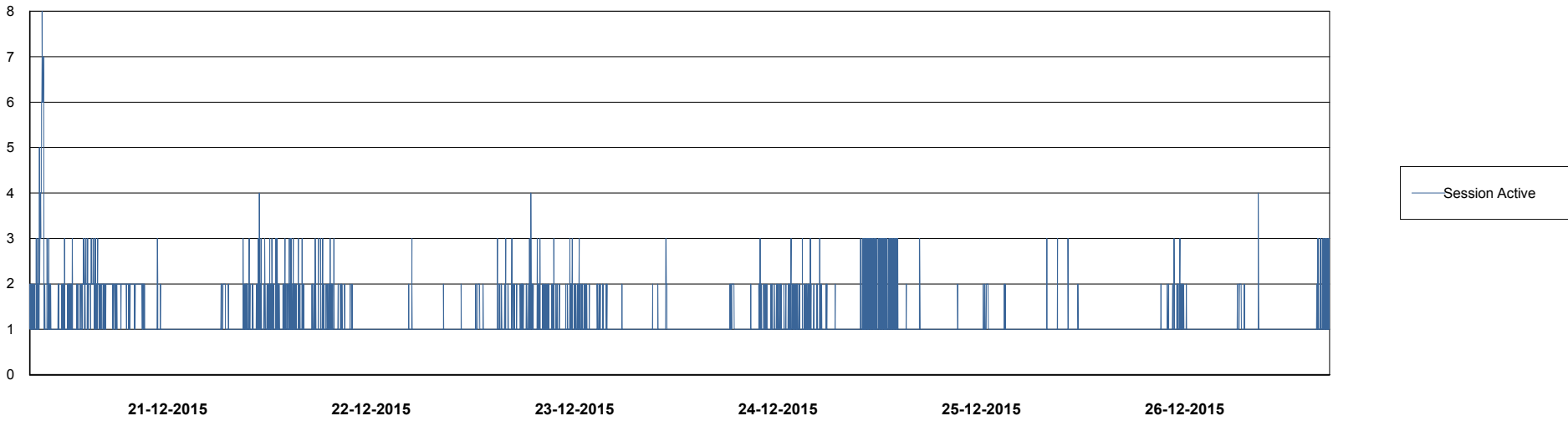
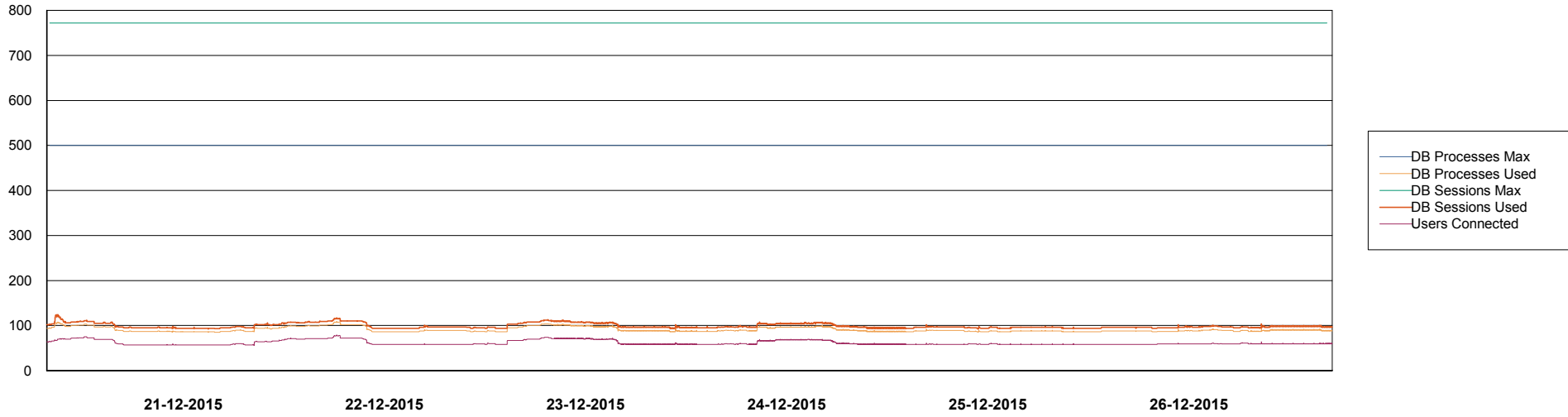
Weekly SLA Customer Report

Customer VEN_Production
Database ID 35



DATABASE PERFORMANCE

VENDB_Production



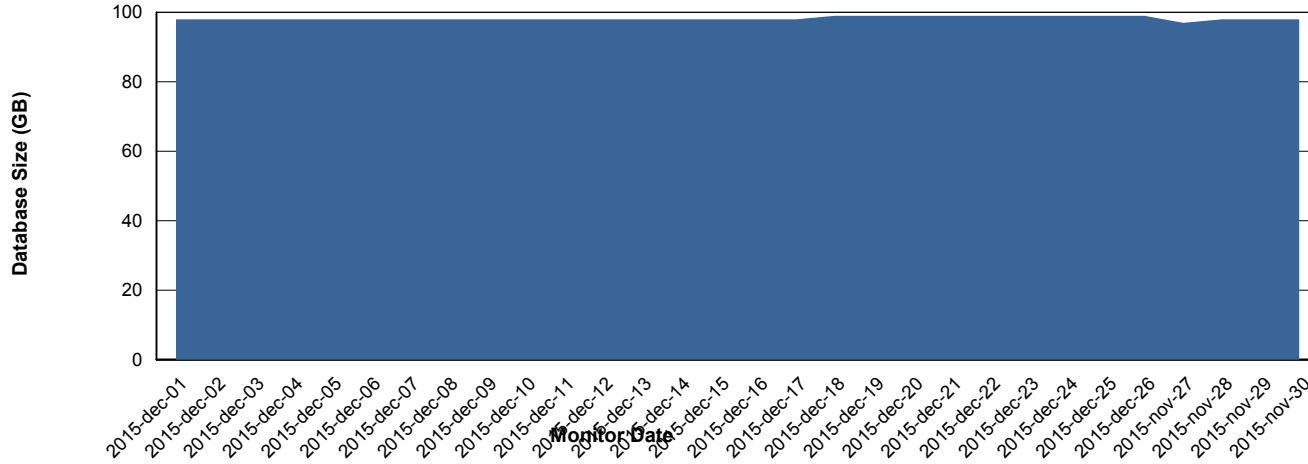
Weekly SLA Customer Report

Customer VEN_Production
 Database ID 35



=====
 DATABASE SIZE VENDB_Production
 =====

Database growth over last month



=====
 DATABASE TABLESPACES VENDB_Production
 =====

TOTAL DATABASE SIZE PER TABLESPACE

Date	Tablespace Name	Filesize (Gb)	Usedsize (Gb)	Percentage free
26-12-2015	ABSDATA	39	32	18
	INDX	88	65	26
25-12-2015	ABSDATA	39	32	18
	INDX	88	65	26
24-12-2015	ABSDATA	39	32	18
	INDX	88	65	26
23-12-2015	ABSDATA	39	32	18
	INDX	88	65	26
22-12-2015	ABSDATA	39	32	18
	INDX	88	65	26
21-12-2015	ABSDATA	39	32	18
	INDX	88	65	26
20-12-2015	ABSDATA	39	32	18
	INDX	88	65	26

Weekly SLA Customer Report

Customer VEN_Production
Database ID 35



=====
STANDBY DATABASE HEALTH VEN_Production
=====

Recovery lag for last 7 days

