

Weekly SLA Customer Report

Customer NIX_Production
Database ID 51



=====
HARDDISK USAGE NIX_PRD_ABSAPP2
=====

	Total disk space on C (GB)	Free disk space on C (GB)
26-12-2015	200	162
25-12-2015	200	162
24-12-2015	200	162
23-12-2015	200	162
22-12-2015	200	162
21-12-2015	200	162
20-12-2015	200	162

=====
HARDDISK USAGE NIX_PRD_ABSWEB01
=====

	Total disk space on C (GB)	Free disk space on C (GB)
26-12-2015	300	281
25-12-2015	300	281
24-12-2015	300	282
23-12-2015	300	282
22-12-2015	300	281
21-12-2015	300	281
20-12-2015	300	281

Weekly SLA Customer Report

Customer NIX_Production
 Database ID 51



=====
 HARDDISK USAGE NIX_PRD_ORACLE_BI1
 =====

	Total disk space on C (GB)	Free disk space on C (GB)	Total disk space on E (GB)	Free disk space on E (GB)	Total disk space on F (GB)	Free disk space on F (GB)	Total disk space on G (GB)	Free disk space on G (GB)
26-12-2015	279	103	558	359	279	179	558	466
25-12-2015	279	106	558	359	279	179	558	466
24-12-2015	279	110	558	359	279	179	558	466
23-12-2015	279	114	558	363	279	179	558	466
22-12-2015	279	118	558	363	279	179	558	479
21-12-2015	279	122	558	363	279	179	558	489
20-12-2015	279	126	558	363	279	179	558	489

=====
 HARDDISK USAGE NIX_PRD_ORCDB1
 =====

	Total disk space on C (GB)	Free disk space on C (GB)	Total disk space on E (GB)	Free disk space on E (GB)	Total disk space on F (GB)	Free disk space on F (GB)	Total disk space on G (GB)	Free disk space on G (GB)
26-12-2015	279	178	558	465	558	457	279	124
25-12-2015	279	178	558	465	558	457	279	124
24-12-2015	279	178	558	465	558	457	279	126
23-12-2015	279	180	558	465	558	457	279	128
22-12-2015	279	180	558	465	558	458	279	130
21-12-2015	279	180	558	465	558	458	279	133
20-12-2015	279	180	558	465	558	458	279	136

Weekly SLA Customer Report

Customer NIX_Production
Database ID 51



HARDDISK USAGE NIX_PRD_ORCDB2

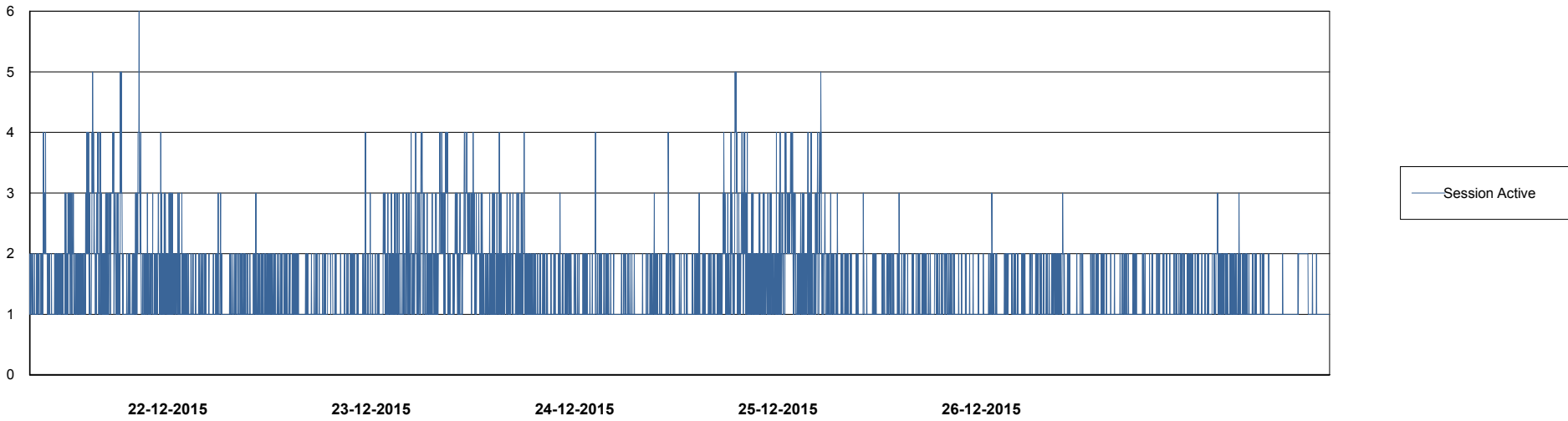
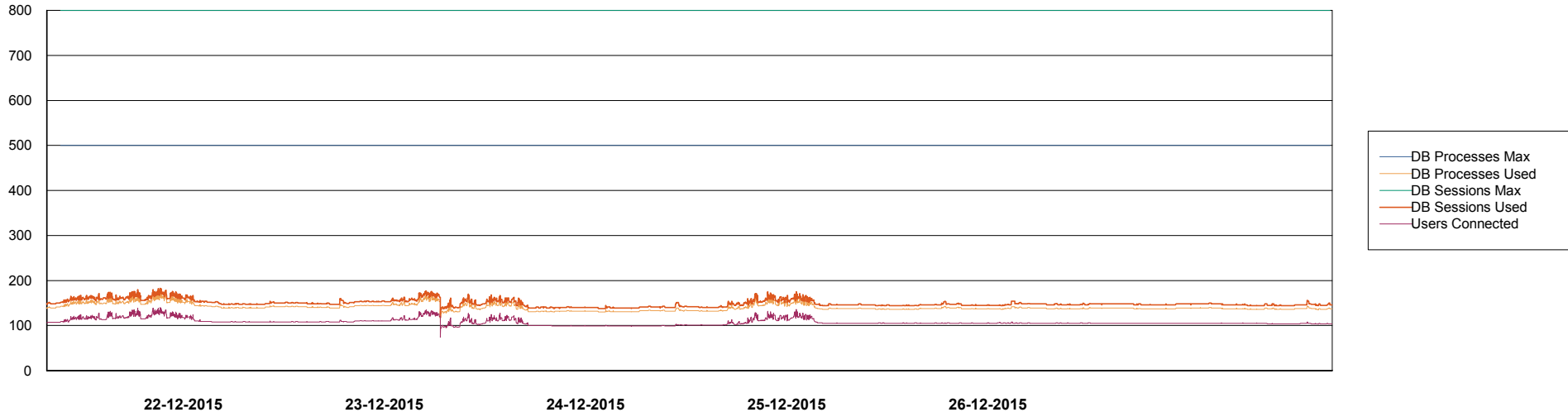
	Total disk space on C (GB)	Free disk space on C (GB)	Total disk space on E (GB)	Free disk space on E (GB)	Total disk space on F (GB)	Free disk space on F (GB)	Total disk space on G (GB)	Free disk space on G (GB)
26-12-2015	279	178	558	465	558	457	279	124
25-12-2015	279	178	558	465	558	457	279	124
24-12-2015	279	178	558	465	558	457	279	126
23-12-2015	279	180	558	465	558	457	279	128
22-12-2015	279	180	558	465	558	458	279	130
21-12-2015	279	180	558	465	558	458	279	133
20-12-2015	279	180	558	465	558	458	279	136

Weekly SLA Customer Report

Customer NIX_Production
Database ID 51



DATABASE PERFORMANCE NIXDB_Production

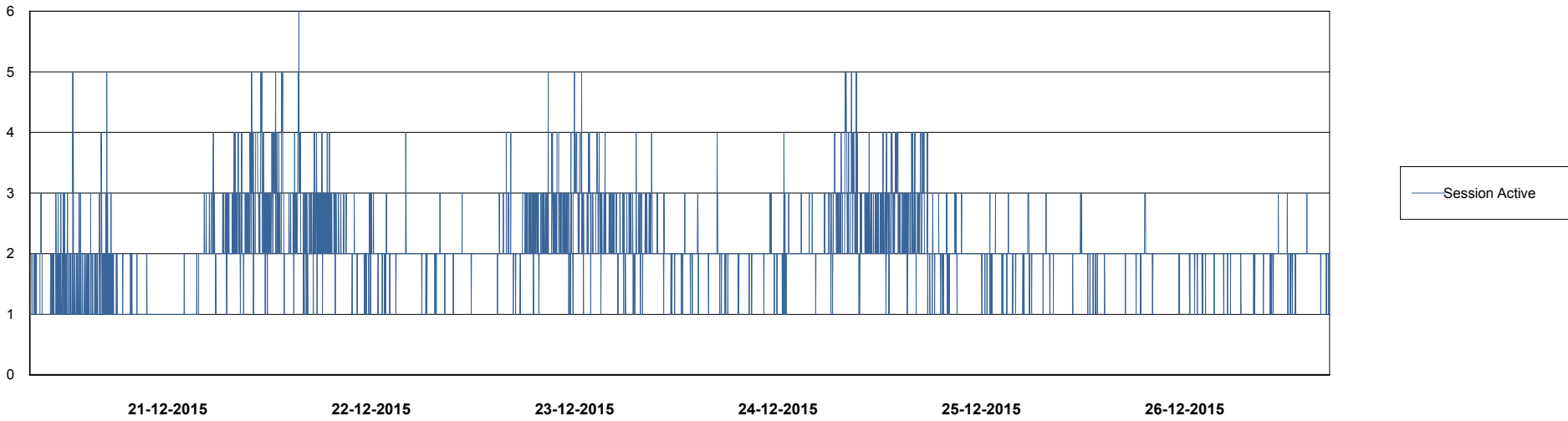
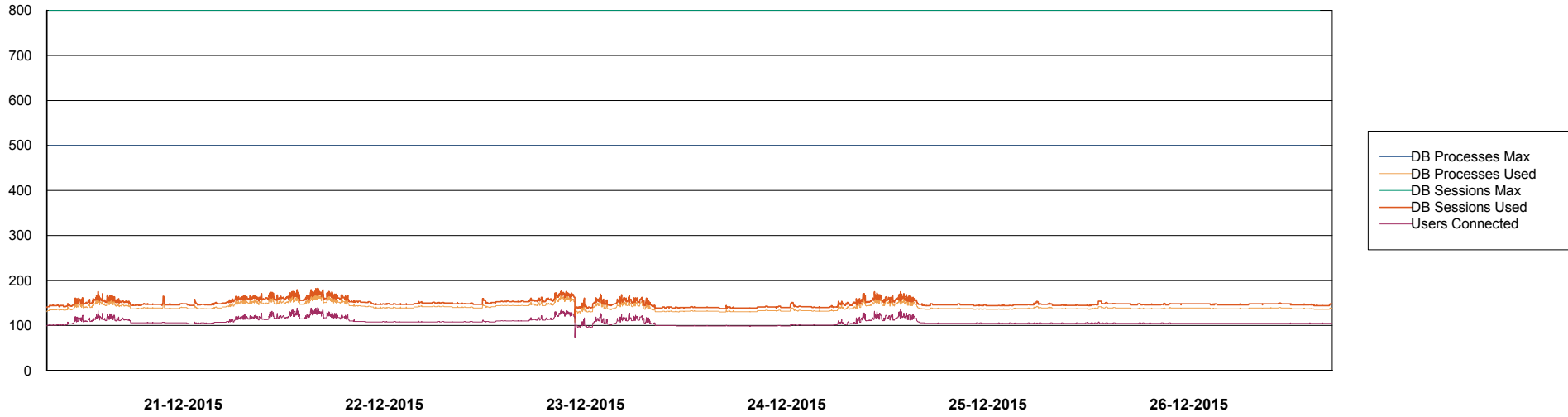


Weekly SLA Customer Report

Customer NIX_Production
Database ID 51



DATABASE PERFORMANCE NIXDB_Standby



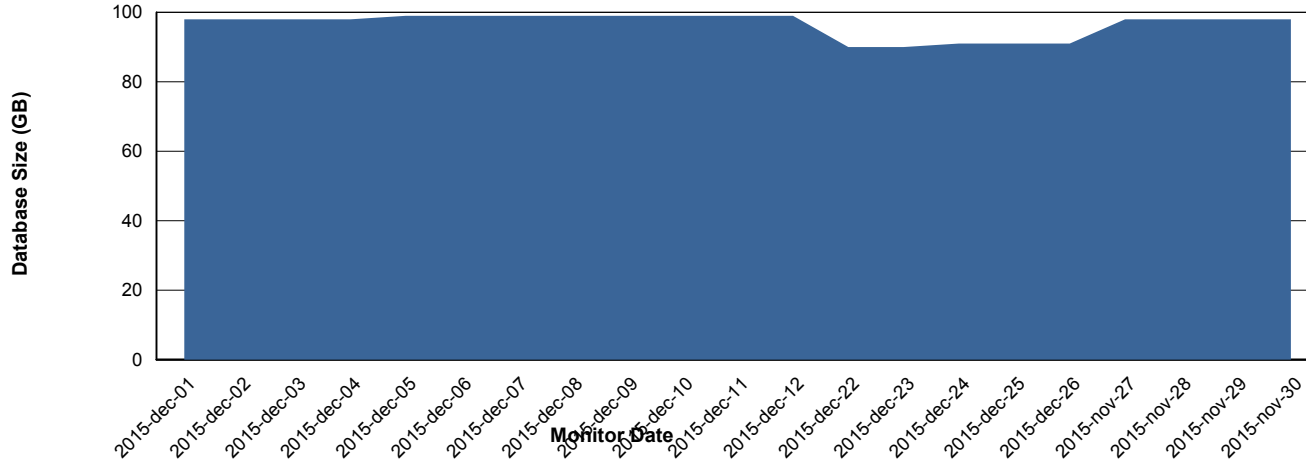
Weekly SLA Customer Report

Customer NIX_Production
 Database ID 51



=====
 DATABASE SIZE NIXDB_Production
 =====

Database growth over last month



=====
 DATABASE TABLESPACES NIXDB_Production
 =====

TOTAL DATABASE SIZE PER TABLESPACE

Date	Tablespace Name	Filesize (Gb)	Usedsize (Gb)	Percentage free
26-12-2015	ABSDATA	50	36	28
	INDX	100	54	46
25-12-2015	ABSDATA	50	36	28
	INDX	100	54	46
24-12-2015	ABSDATA	50	36	28
	INDX	100	54	46
23-12-2015	ABSDATA	50	36	28
	INDX	100	54	46
22-12-2015	ABSDATA	50	36	28
	INDX	100	54	46

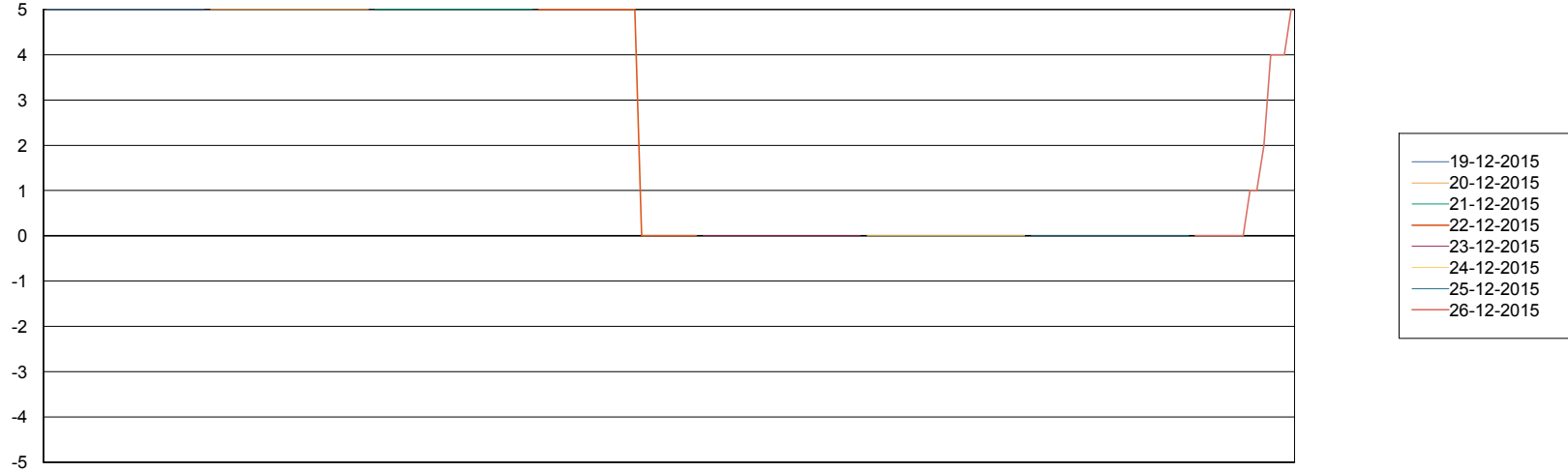
Weekly SLA Customer Report

Customer NIX_Production
Database ID 51



=====
STANDBY DATABASE HEALTH NIX_Production
=====

Recovery lag for last 7 days



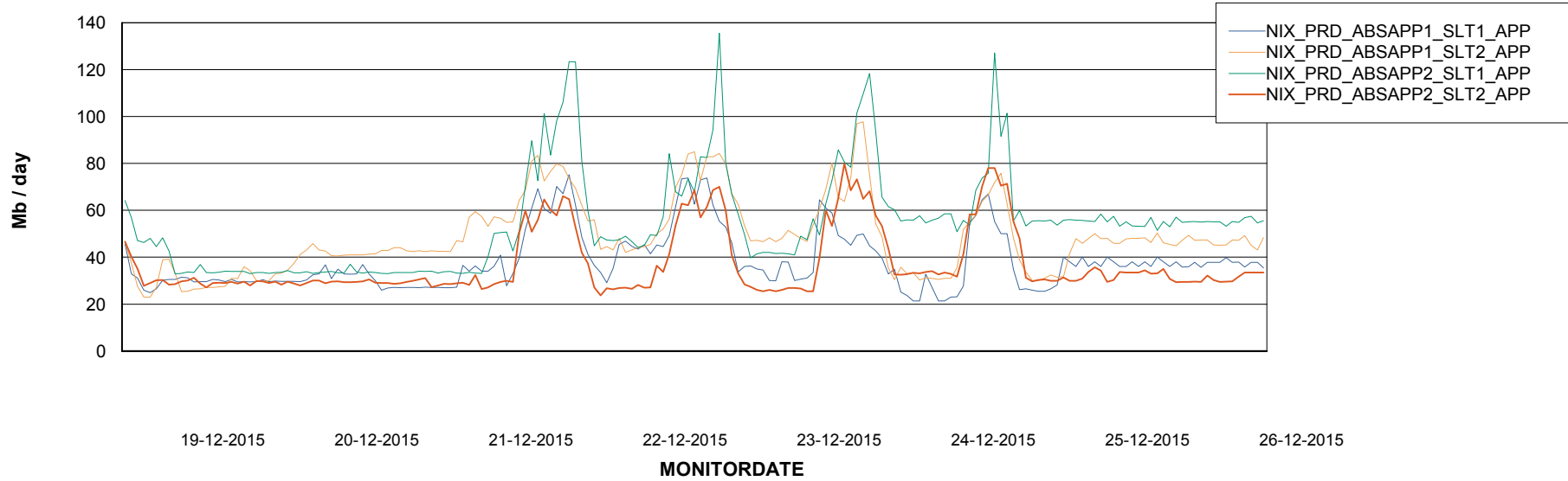
Weekly SLA Customer Report

Customer NIX_Production
Database ID 51



=====
ABSolute Application Server Services
=====

Avg memory used per ABS Server Service



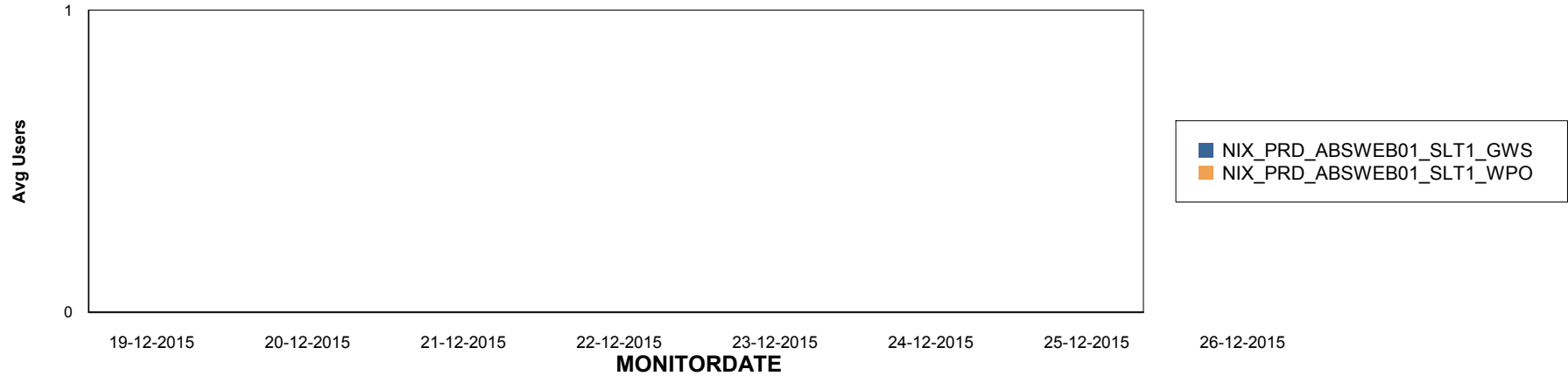
Weekly SLA Customer Report

Customer NIX_Production
Database ID 51

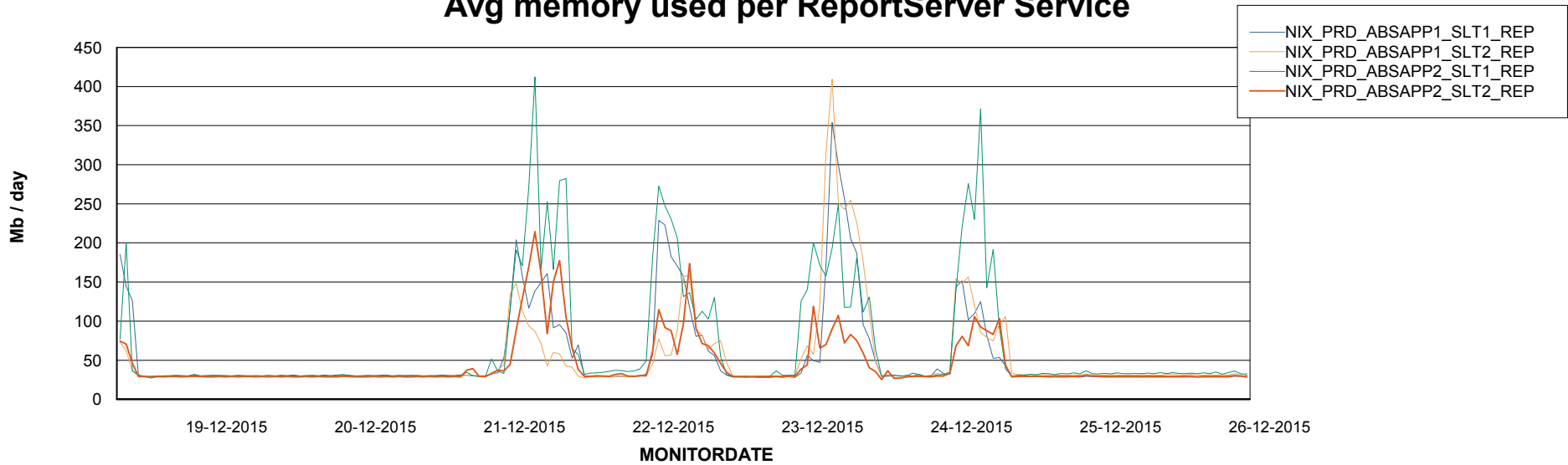


=====
ABSolute Application ReportServer Services
=====

Disaster per ReportServer



Avg memory used per ReportServer Service



Weekly SLA Customer Report

Customer NIX_Production
Database ID 51



Disaster per ABS component

