

Weekly SLA Customer Report

Customer JWR Production
Database ID 43



=====
HARDDISK USAGE JWR_PRD_JWR-ABS-01
=====

	Used disk space on / (GB)	Total disk space on / (GB)	Free disk space on / (GB)
26-12-2015	30	49	17
25-12-2015	30	49	17
24-12-2015	30	49	17
23-12-2015	30	49	17
22-12-2015	32	49	14
21-12-2015	32	49	14
20-12-2015	32	49	14

=====
HARDDISK USAGE JWR_PRD_JWR-ABS-02
=====

	Used disk space on / (GB)	Total disk space on / (GB)	Free disk space on / (GB)
26-12-2015	36	49	11
25-12-2015	35	49	11
24-12-2015	35	49	11
23-12-2015	35	49	11
22-12-2015	35	49	11
21-12-2015	35	49	11
20-12-2015	35	49	11

Weekly SLA Customer Report

Customer JWR Production
 Database ID 43



=====
 HARDDISK USAGE JWR_PRD_JWR-ODB-01
 =====

	Used disk space on / (GB)	Total disk space on / (GB)	Free disk space on / (GB)
26-12-2015	104	148	37
25-12-2015	104	148	37
24-12-2015	104	148	36
23-12-2015	105	148	36
22-12-2015	105	148	36
21-12-2015	105	148	36
20-12-2015	104	148	36

=====
 HARDDISK USAGE JWR_PRD_JWR-ODB-02
 =====

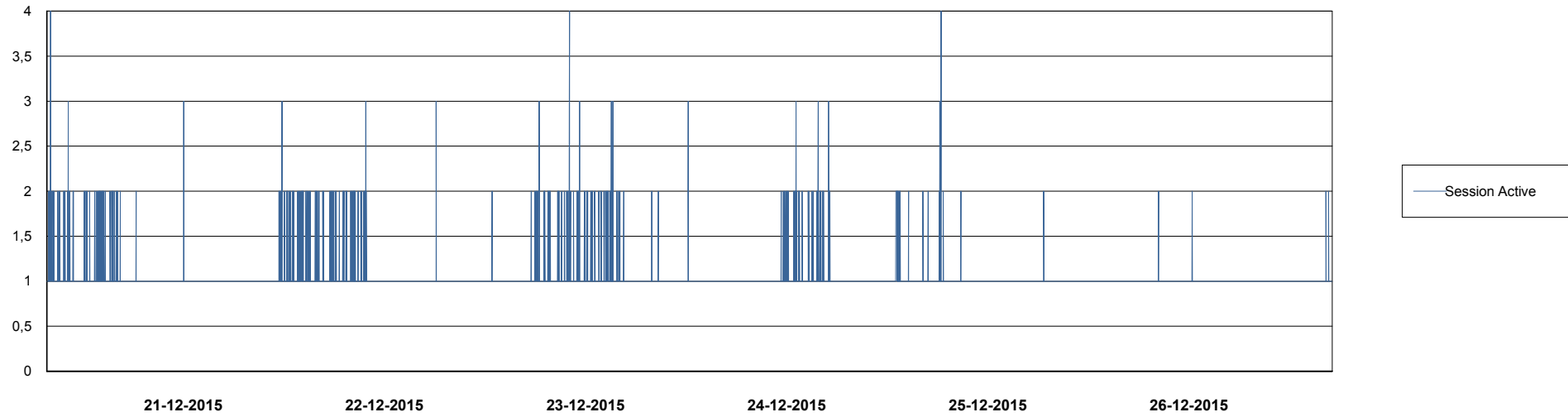
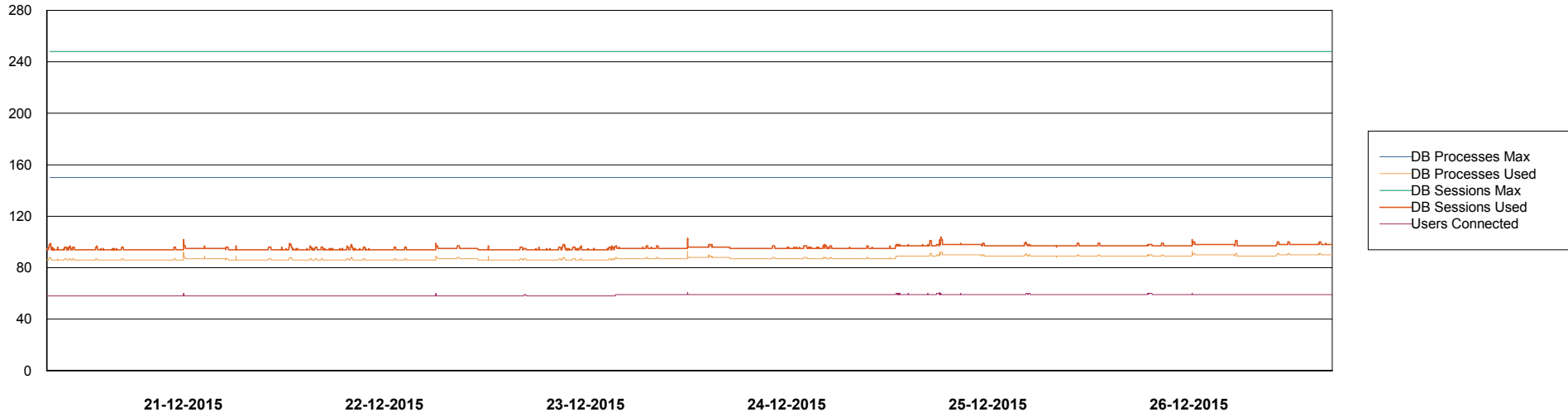
	Used disk space on / (GB)	Total disk space on / (GB)	Free disk space on / (GB)
26-12-2015	95	138	36
25-12-2015	95	138	35
24-12-2015	96	138	35
23-12-2015	96	138	35
22-12-2015	96	138	35
21-12-2015	96	138	34
20-12-2015	96	138	35

Weekly SLA Customer Report

Customer JWR Production
Database ID 43



DATABASE PERFORMANCE JWRDB_Production



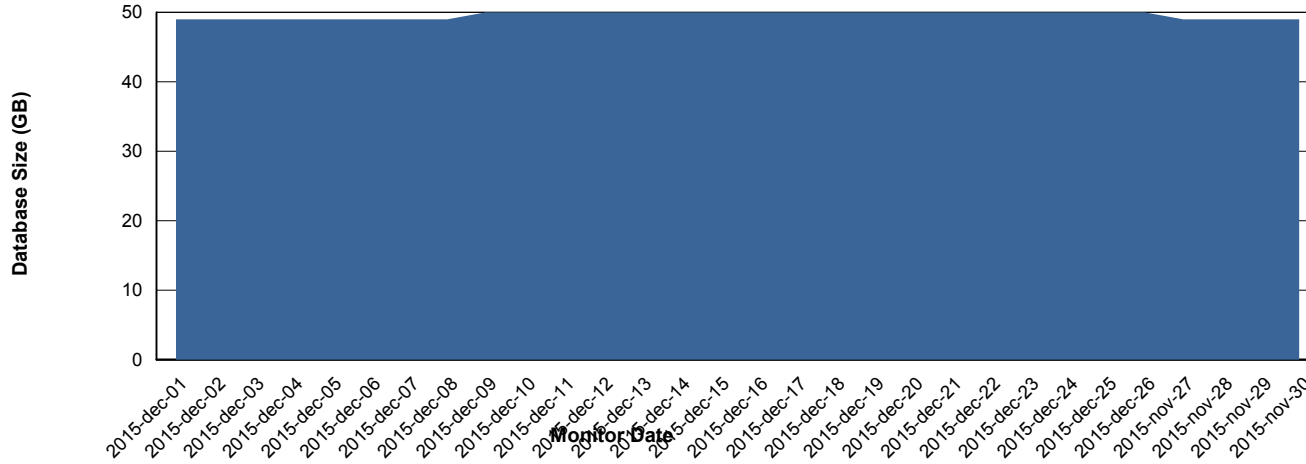
Weekly SLA Customer Report

Customer JWR Production
 Database ID 43



=====
 DATABASE SIZE JWRDB_Production
 =====

Database growth over last month



=====
 DATABASE TABLESPACES JWRDB_Production
 =====

TOTAL DATABASE SIZE PER TABLESPACE

Date	Tablespace Name	Filesize (Gb)	Usedsize (Gb)	Percentage free
26-12-2015	ABSDATA	18	14	22
	INDX	46	35	24
25-12-2015	ABSDATA	18	14	22
	INDX	46	35	24
24-12-2015	ABSDATA	18	14	22
	INDX	46	35	24
23-12-2015	ABSDATA	18	14	22
	INDX	46	35	24
22-12-2015	ABSDATA	18	14	22
	INDX	46	35	24
21-12-2015	ABSDATA	18	14	22
	INDX	46	35	24
20-12-2015	ABSDATA	18	14	22
	INDX	46	35	24

Weekly SLA Customer Report

Customer JWR Production
Database ID 43



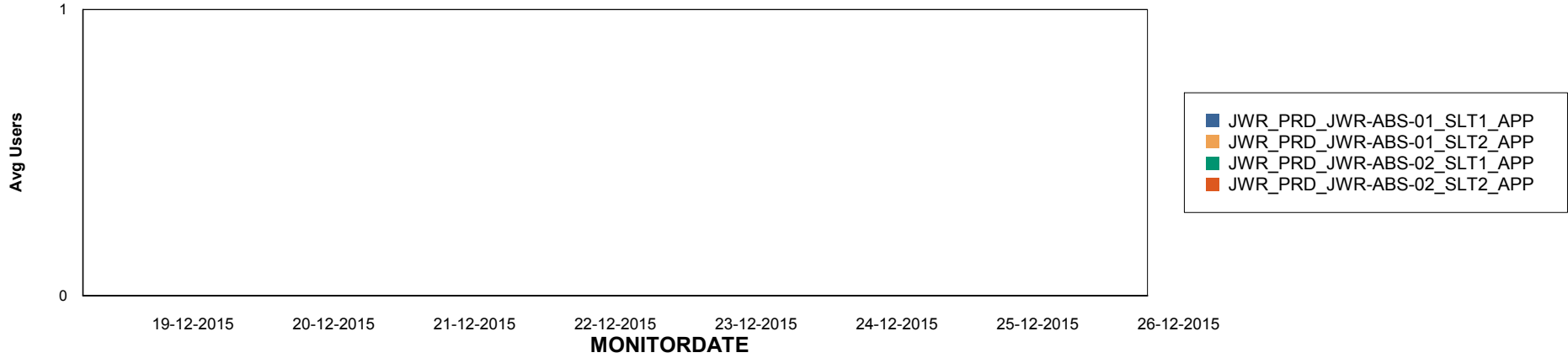
Weekly SLA Customer Report

Customer JWR Production
Database ID 43

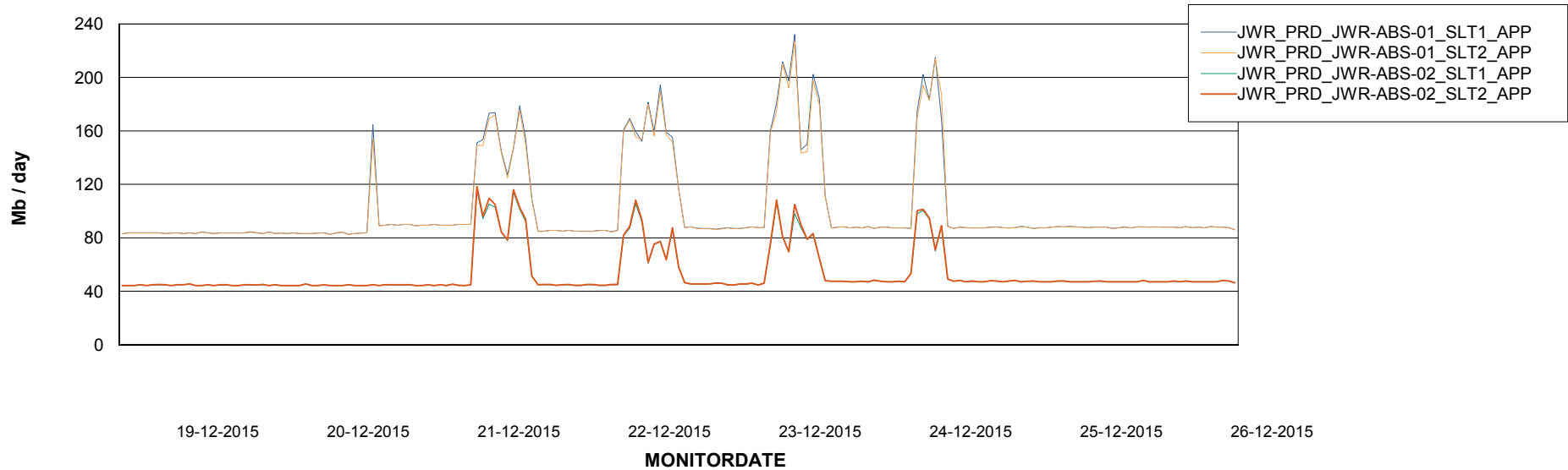


ABSolute Application Server Services

Disaster per ABS Server



Avg memory used per ABS Server Service



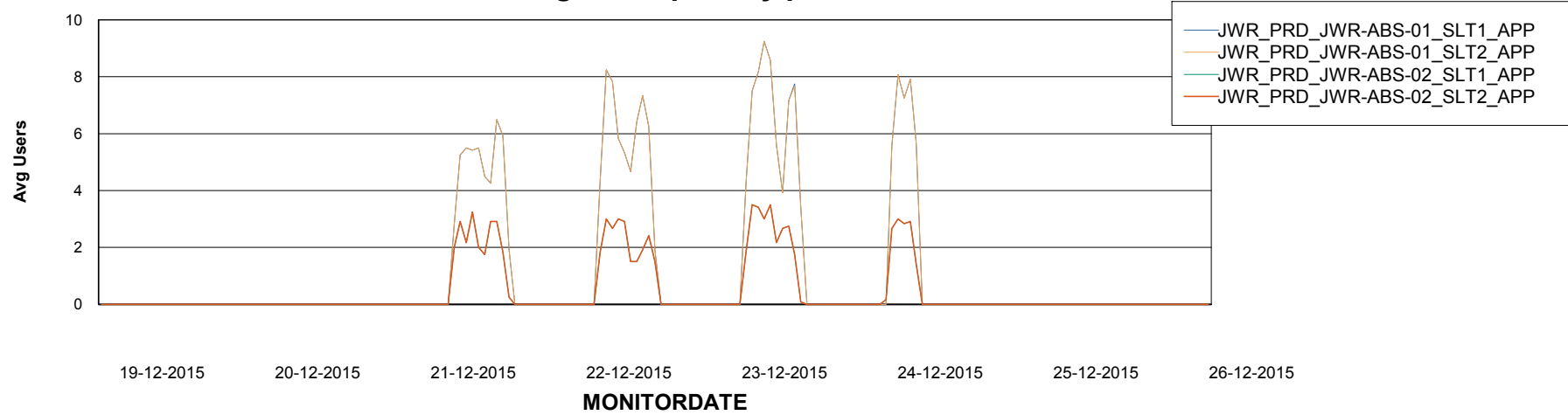
Weekly SLA Customer Report

Customer JWR Production
Database ID 43



=====
ABSolute Application Server Services
=====

Avg users per day per ABS server



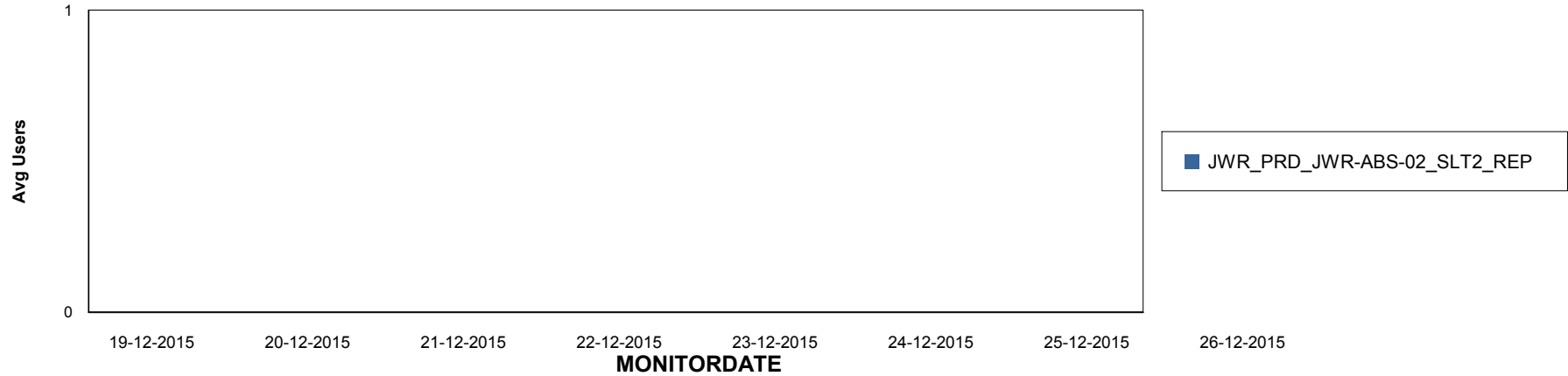
Weekly SLA Customer Report

Customer JWR Production
Database ID 43

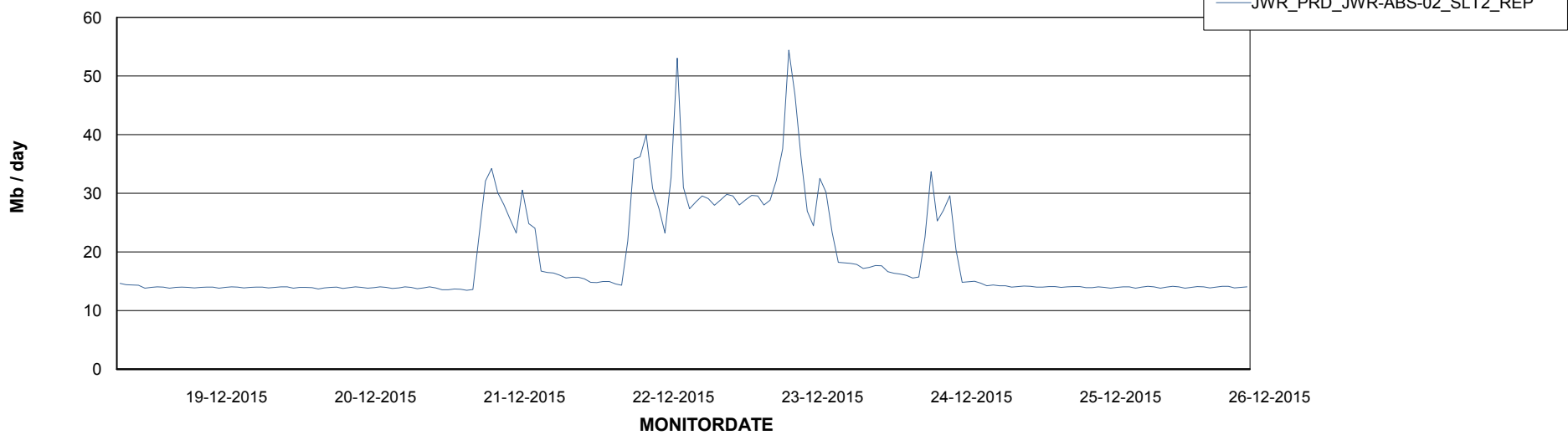


=====
ABSolute Application ReportServer Services
=====

Disaster per ReportServer



Avg memory used per ReportServer Service



Weekly SLA Customer Report

Customer JWR Production
Database ID 43



Disaster per ABS component

