

Weekly SLA Customer Report

Customer CSC_Production
 Database ID 50



=====
 HARDDISK USAGE CSC_PRD_ABSSRV
 =====

	Total disk space on C (GB)	Free disk space on C (GB)	Total disk space on D (GB)	Free disk space on D (GB)	Total disk space on E (GB)	Free disk space on E (GB)
26-12-2015	102	54	220	130	325	61
25-12-2015	102	54	220	130	325	61
24-12-2015	102	54	220	130	325	61
23-12-2015	102	54	220	130	325	61
22-12-2015	102	54	220	130	325	61
21-12-2015	102	54	220	130	325	61
20-12-2015	102	54	220	130	325	61

=====
 HARDDISK USAGE CSC_PRD_ABS01
 =====

	Total disk space on C (GB)	Free disk space on C (GB)	Total disk space on D (GB)	Free disk space on D (GB)	Total disk space on E (GB)	Free disk space on E (GB)
26-12-2015	110	35	210	115	500	215
25-12-2015	110	36	210	115	500	215
24-12-2015	110	36	210	115	500	215
23-12-2015	110	36	210	115	500	215
22-12-2015	110	36	210	115	500	215
21-12-2015	110	36	210	115	500	215
20-12-2015	110	36	210	115	500	215

Weekly SLA Customer Report

Customer CSC_Production
 Database ID 50



=====
 HARDDISK USAGE CSC_PRD_ABS02
 =====

	Total disk space on C (GB)	Free disk space on C (GB)
26-12-2015	80	47
25-12-2015	80	47
24-12-2015	80	47
23-12-2015	80	47
22-12-2015	80	47
21-12-2015	80	47
20-12-2015	80	47

=====
 HARDDISK USAGE CSC_PRD_SRV-DB-ABS
 =====

	Total disk space on C (GB)	Free disk space on C (GB)	Total disk space on D (GB)	Free disk space on D (GB)	Total disk space on E (GB)	Free disk space on E (GB)
26-12-2015	145	74	294	50	679	157
25-12-2015	145	74	294	50	679	185
24-12-2015	145	74	294	50	679	191
23-12-2015	145	74	294	50	679	229
22-12-2015	145	74	294	50	679	197
21-12-2015	145	74	294	50	679	247
20-12-2015	145	74	294	50	679	149

Weekly SLA Customer Report

Customer CSC_Production
Database ID 50



HARDDISK USAGE CSC_PRD_SRV-DB-ABS4

	Total disk space on C (GB)	Free disk space on C (GB)	Total disk space on D (GB)	Free disk space on D (GB)	Total disk space on E (GB)	Free disk space on E (GB)
26-12-2015	100	77	500	409	500	290
25-12-2015	100	77	500	409	500	277
24-12-2015	100	77	500	409	500	273
23-12-2015	100	77	500	409	500	276
22-12-2015	100	77	500	409	500	279
21-12-2015	100	77	500	409	500	282
20-12-2015	100	77	500	409	500	284

HARDDISK USAGE CSC_PRD_WEBSRV

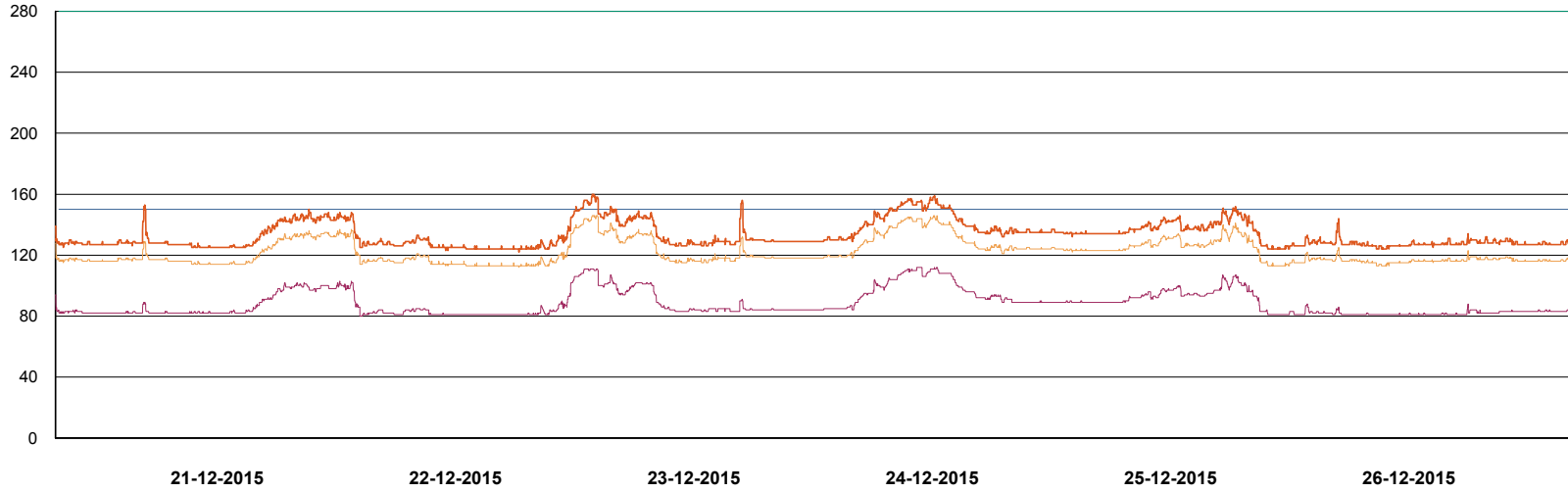
	Used disk space on C (GB)	Total disk space on C (GB)	Free disk space on C (GB)
26-12-2015	36	59	23
25-12-2015	36	59	23
24-12-2015	36	59	23
23-12-2015	36	59	23
22-12-2015	36	59	23
21-12-2015	36	59	23
20-12-2015	36	59	23

Weekly SLA Customer Report

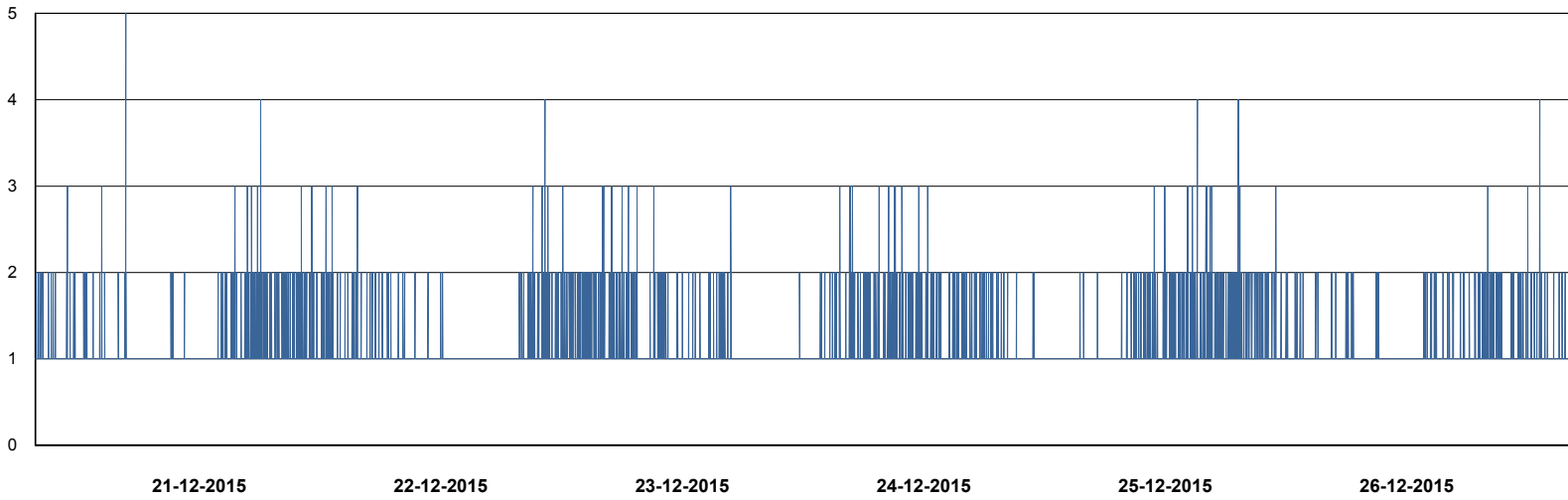
Customer CSC_Production
Database ID 50



DATABASE PERFORMANCE CSCDB_Production



- DB Processes Max
- DB Processes Used
- DB Sessions Max
- DB Sessions Used
- Users Connected



- Session Active

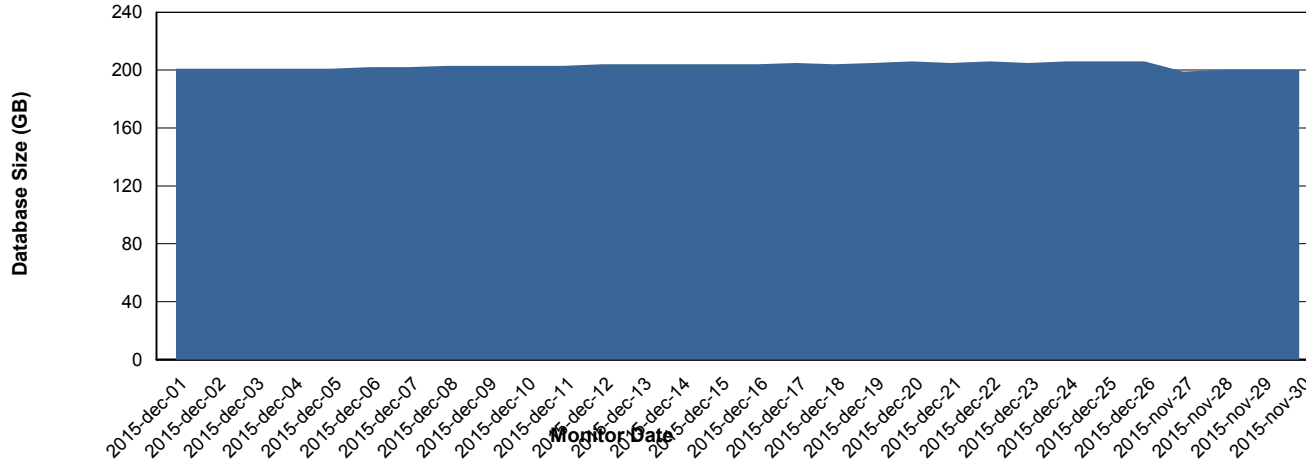
Weekly SLA Customer Report

Customer CSC_Production
 Database ID 50



=====
 DATABASE SIZE CSCDB_Production
 =====

Database growth over last month



=====
 DATABASE TABLESPACES CSCDB_Production
 =====

TOTAL DATABASE SIZE PER TABLESPACE

Date	Tablespace Name	Filesize (Gb)	Usedsize (Gb)	Percentage free
26-12-2015	ABSDATA	79	65	18
	INDX	183	139	24
25-12-2015	ABSDATA	79	65	18
	INDX	183	139	24
24-12-2015	ABSDATA	79	65	18
	INDX	183	139	24
23-12-2015	ABSDATA	79	65	18
	INDX	183	139	24
22-12-2015	ABSDATA	79	65	18
	INDX	183	138	25
21-12-2015	ABSDATA	79	65	18
	INDX	183	138	25
20-12-2015	ABSDATA	79	65	18
	INDX	183	138	25

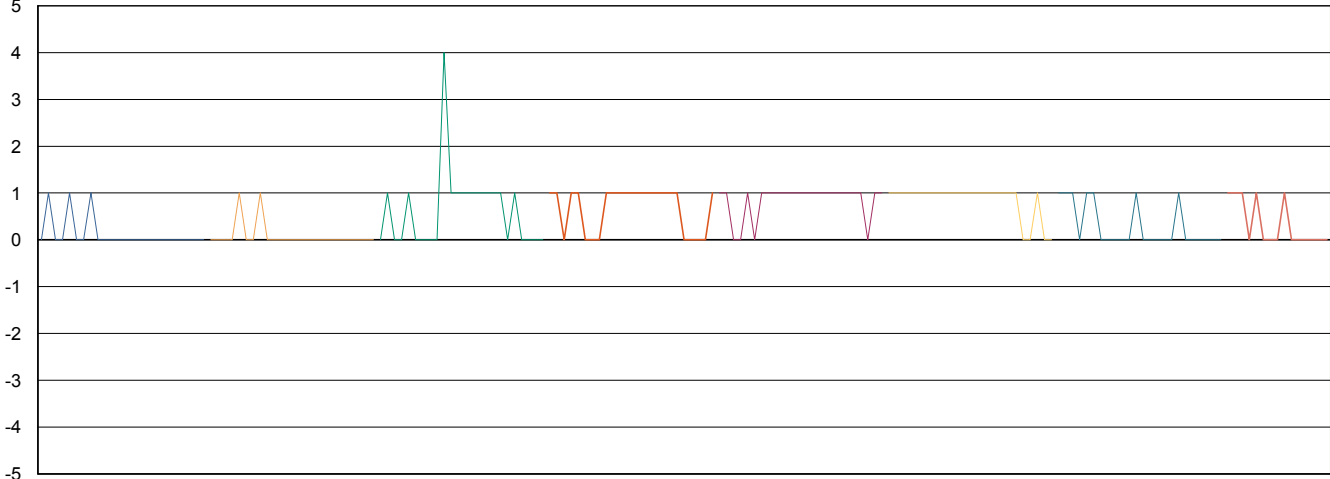
Weekly SLA Customer Report

Customer CSC_Production
Database ID 50



=====
STANDBY DATABASE HEALTH CSC_Production
=====

Recovery lag for last 7 days



- 19-12-2015
- 20-12-2015
- 21-12-2015
- 22-12-2015
- 23-12-2015
- 24-12-2015
- 25-12-2015
- 26-12-2015

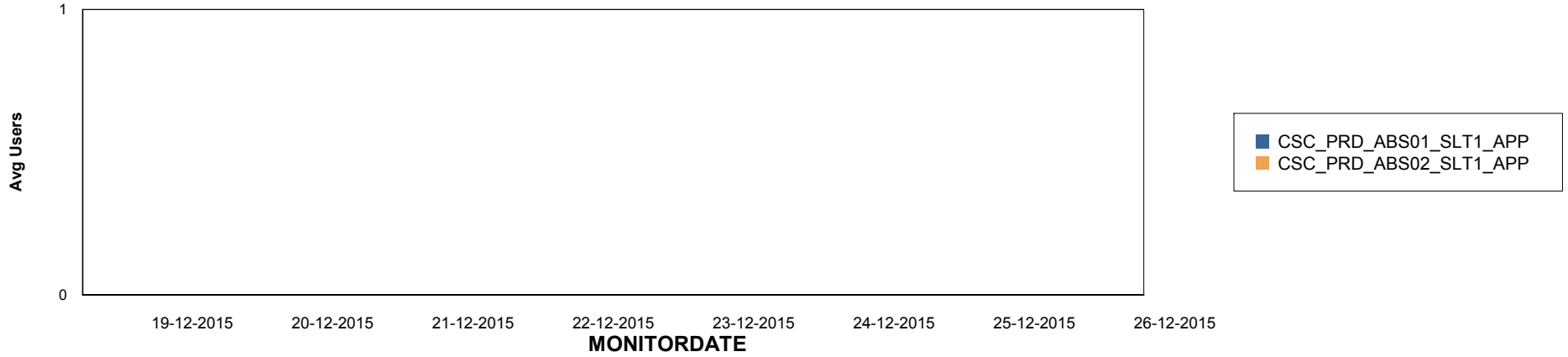
Weekly SLA Customer Report

Customer CSC_Production
Database ID 50

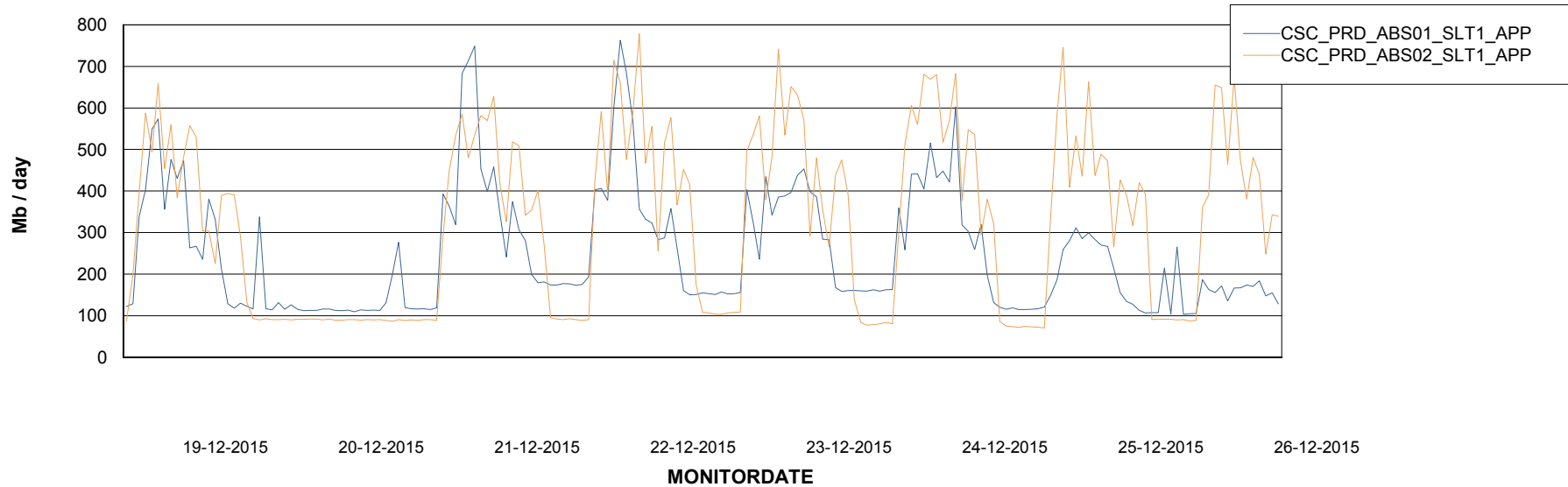


=====
ABSolute Application Server Services
=====

Disaster per ABS Server



Avg memory used per ABS Server Service



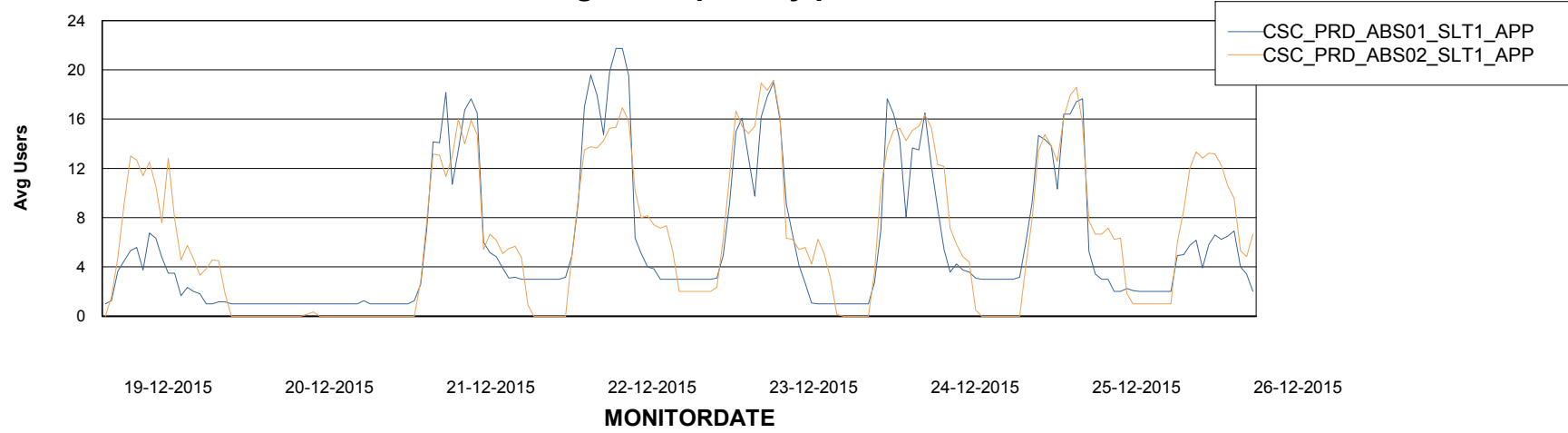
Weekly SLA Customer Report

Customer CSC_Production
Database ID 50



=====
ABSolute Application Server Services
=====

Avg users per day per ABS server



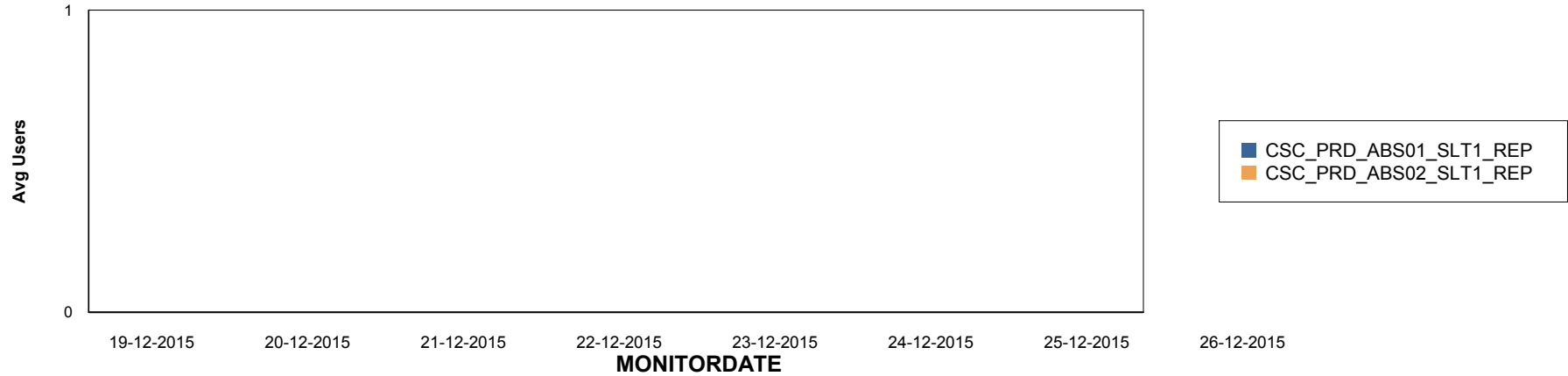
Weekly SLA Customer Report

Customer CSC_Production
Database ID 50

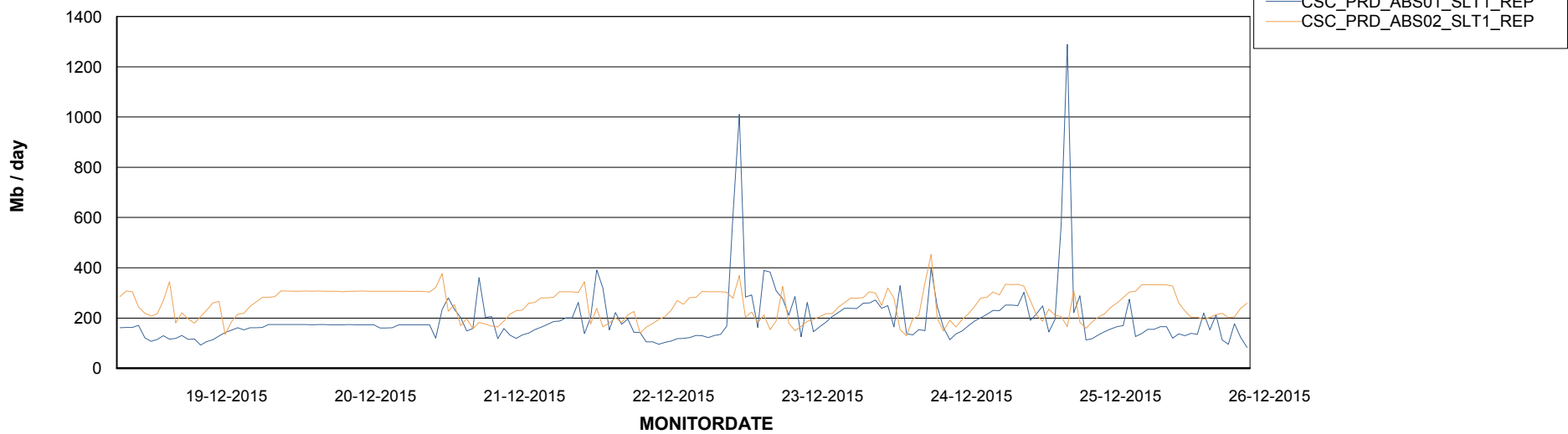


=====
ABSolute Application ReportServer Services
=====

Disaster per ReportServer



Avg memory used per ReportServer Service



Weekly SLA Customer Report

Customer CSC_Production
Database ID 50



Disaster per ABS component

