

## Weekly SLA Customer Report

Customer BOH\_Production  
 Database ID 55



=====  
 HARDDISK USAGE BOH\_PRD\_ORACLE1  
 =====

	Total disk space on C (GB)	Free disk space on C (GB)	Total disk space on D (GB)	Free disk space on D (GB)	Total disk space on E (GB)	Free disk space on E (GB)
15-12-2015	130	31	100	51	220	91
14-12-2015	130	31	100	51	220	91
13-12-2015	130	31	100	52	220	105
12-12-2015	130	31	100	52	220	110
11-12-2015	130	31	100	52	220	111
10-12-2015	130	31	100	52	220	112
9-12-2015	130	31	100	52	220	113

=====  
 HARDDISK USAGE BOH\_PRD\_ORACLE2  
 =====

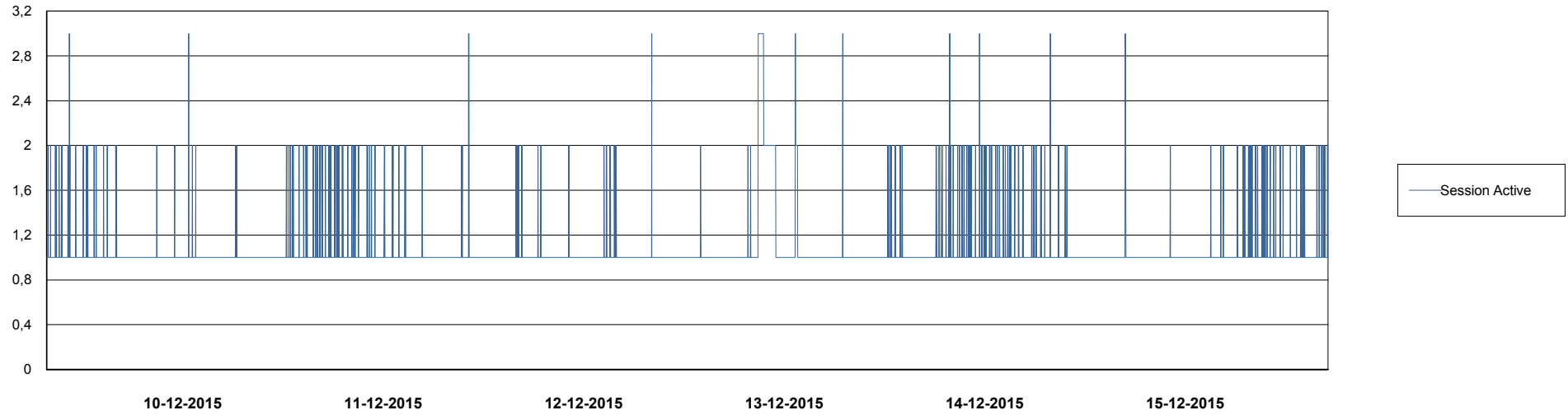
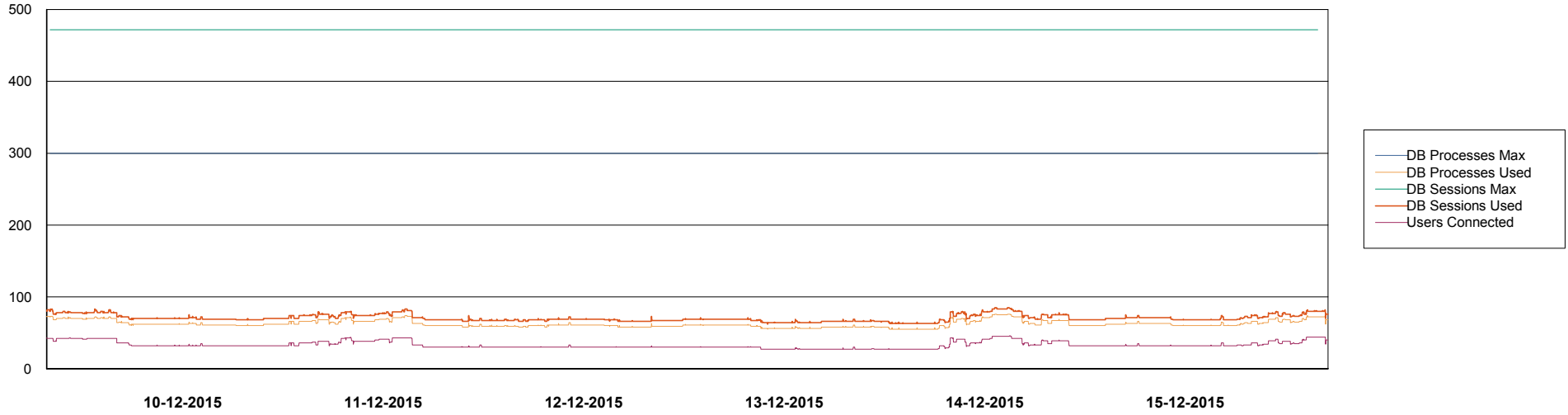
	Total disk space on C (GB)	Free disk space on C (GB)	Total disk space on D (GB)	Free disk space on D (GB)	Total disk space on E (GB)	Free disk space on E (GB)
15-12-2015	557	445	227	179	329	100
14-12-2015	557	445	227	179	329	101
13-12-2015	557	445	227	179	329	115
12-12-2015	557	445	227	179	329	120
11-12-2015	557	445	227	179	329	121
10-12-2015	557	445	227	179	329	122
9-12-2015	557	445	227	179	329	123

# Weekly SLA Customer Report

Customer BOH\_Production  
Database ID 55



## DATABASE PERFORMANCE BOHDB\_Production

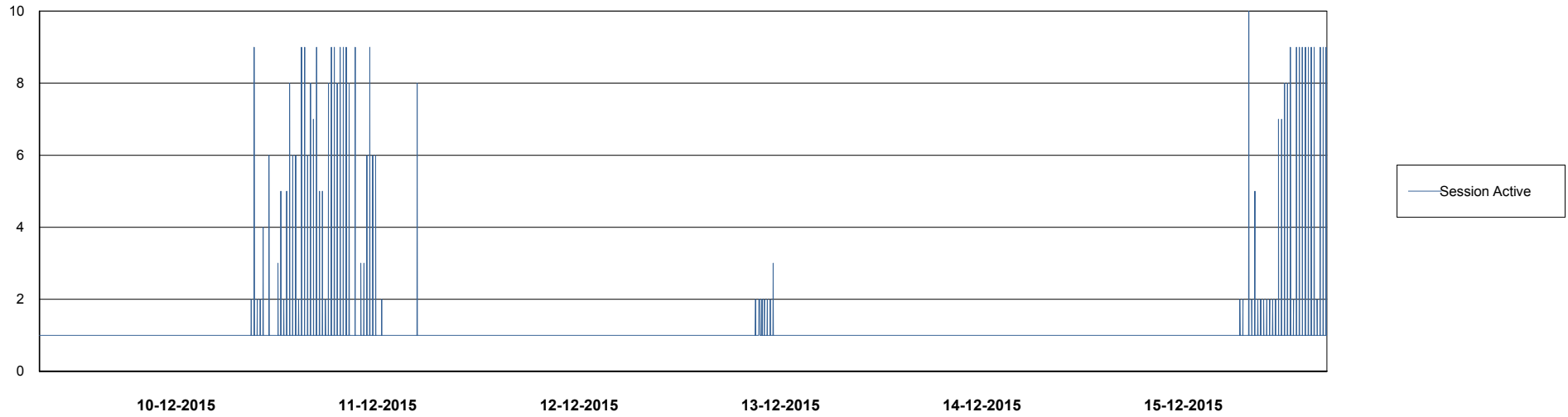
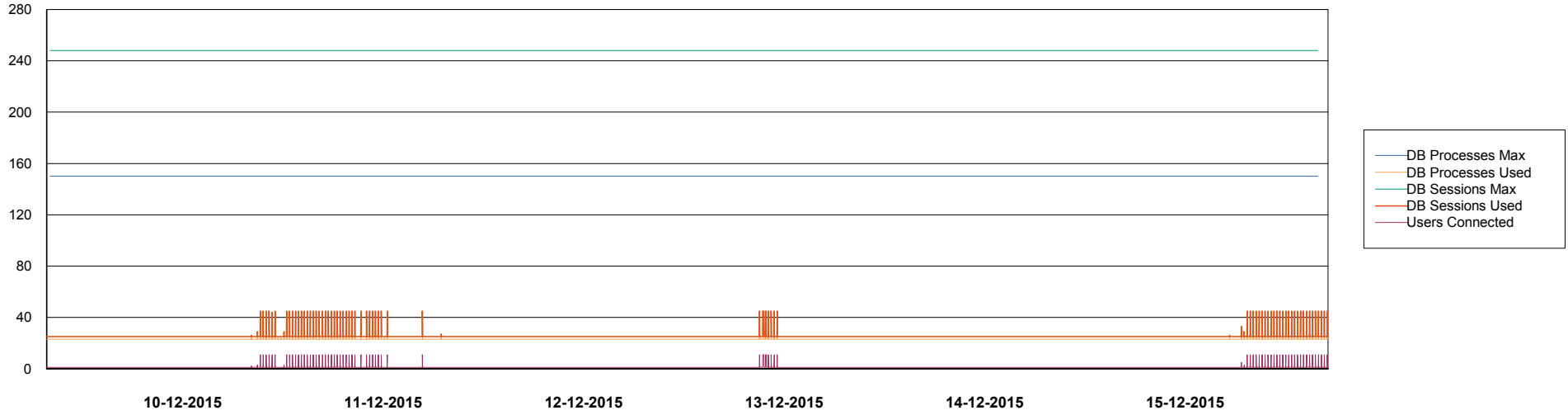


# Weekly SLA Customer Report

Customer BOH\_Production  
Database ID 55



## DATABASE PERFORMANCE BOHDB\_Standby



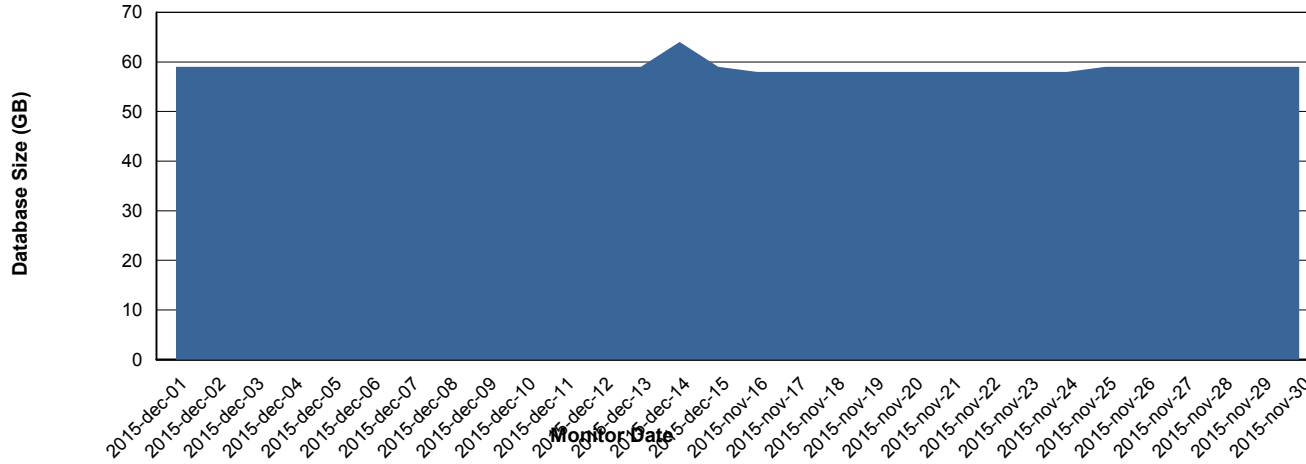
# Weekly SLA Customer Report

Customer BOH\_Production  
 Database ID 55



=====  
 DATABASE SIZE BOHDB\_Production  
 =====

## Database growth over last month



=====  
 DATABASE TABLESPACES BOHDB\_Production  
 =====

### TOTAL DATABASE SIZE PER TABLESPACE

Date	Tablespace Name	Filesize (Gb)	Usedsize (Gb)	Percentage free
15-12-2015	ABSDATA	39	33	15
	INDX	48	24	50
14-12-2015	ABSDATA	39	33	15
	INDX	48	24	50
13-12-2015	ABSDATA	39	33	15
	INDX	48	24	50
12-12-2015	ABSDATA	39	33	15
	INDX	48	24	50
11-12-2015	ABSDATA	39	33	15
	INDX	48	24	50
10-12-2015	ABSDATA	39	33	15
	INDX	48	24	50
9-12-2015	ABSDATA	39	33	15
	INDX	48	24	50

# Weekly SLA Customer Report

Customer BOH\_Production  
Database ID 55



=====  
STANDBY DATABASE HEALTH BOH\_Production  
=====

## Recovery lag for last 7 days

