

Weekly SLA Customer Report

Customer RFL_Production
 Database ID 36



=====
 HARDDISK USAGE RFL_PRD_ORACLE1
 =====

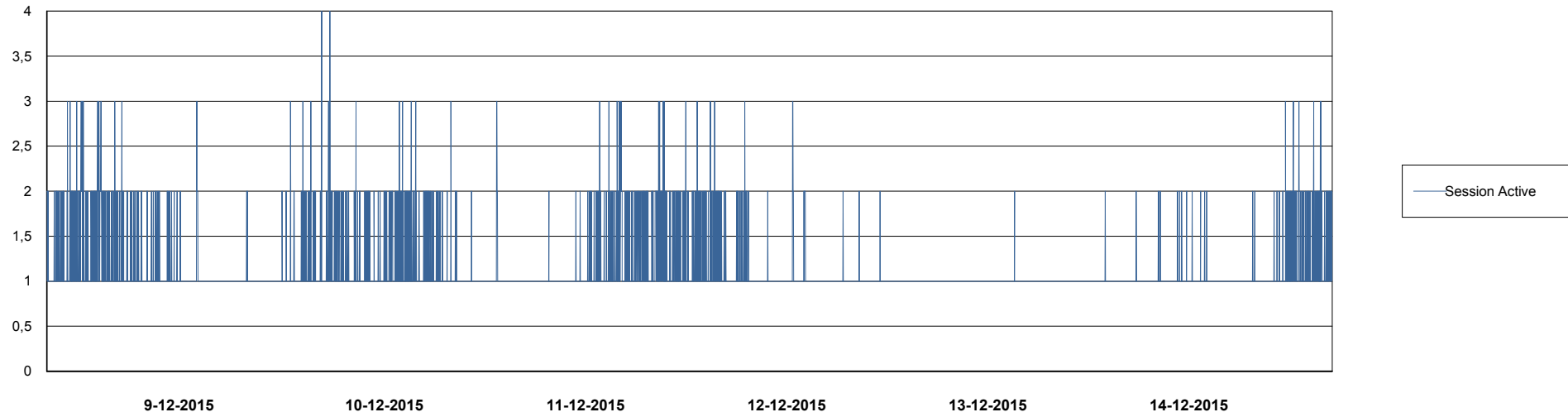
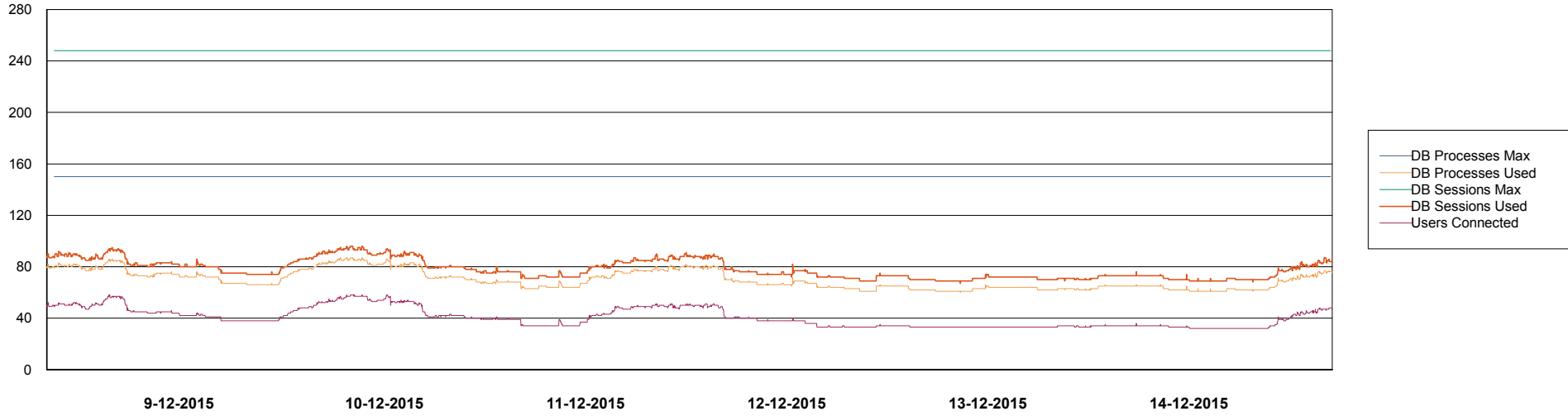
	Total disk space on C (GB)	Free disk space on C (GB)	Total disk space on D (GB)	Free disk space on D (GB)	Total disk space on E (GB)	Free disk space on E (GB)
14-12-2015	279	75	137	85	137	98
13-12-2015	279	75	137	85	137	99
12-12-2015	279	75	137	85	137	98
11-12-2015	279	75	137	85	137	54
10-12-2015	279	75	137	85	137	21
9-12-2015	279	75	137	85	137	22
8-12-2015	279	75	137	85	137	23

Weekly SLA Customer Report

Customer RFL_Production
Database ID 36



DATABASE PERFORMANCE RFLDB_Production

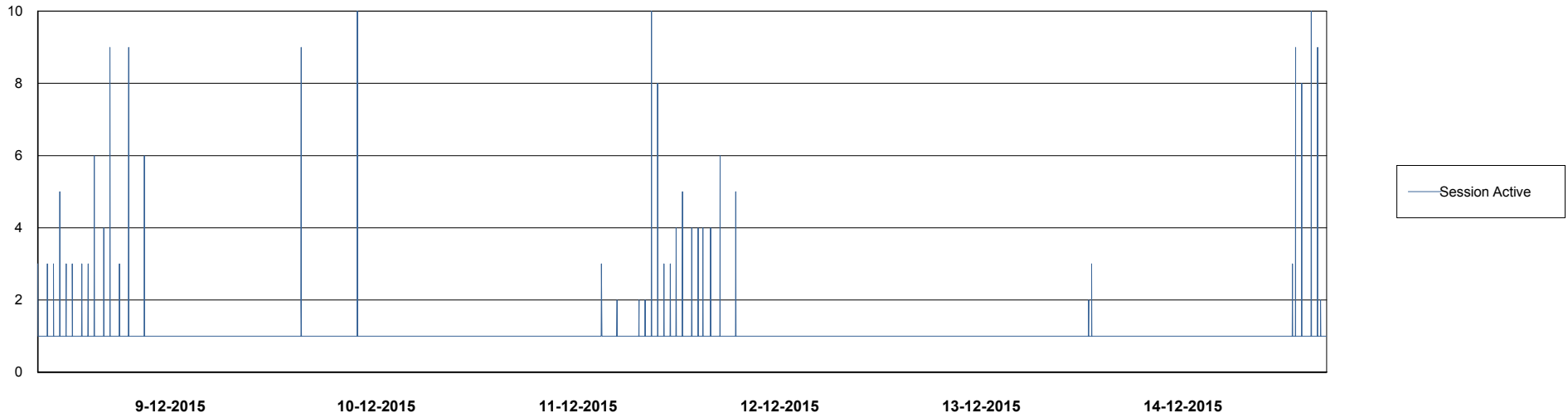
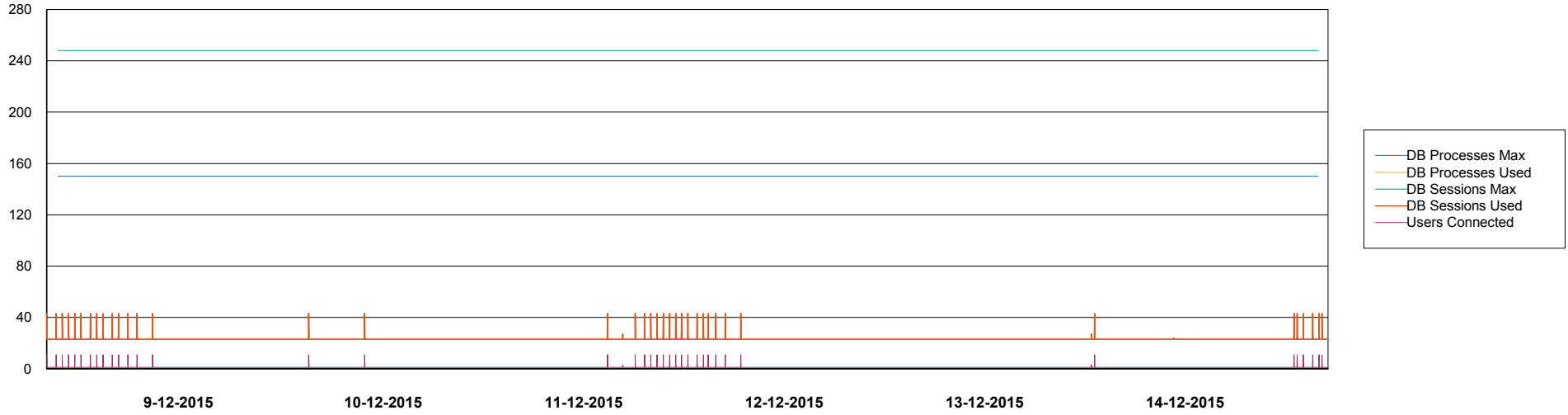


Weekly SLA Customer Report

Customer RFL_Production
Database ID 36



DATABASE PERFORMANCE RFLDB_Standby



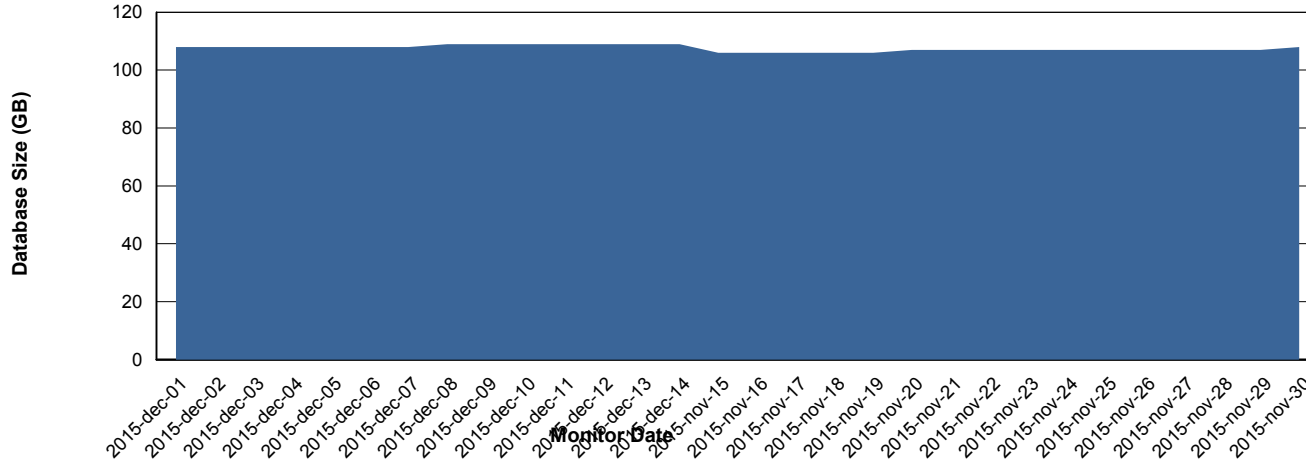
Weekly SLA Customer Report

Customer RFL_Production
 Database ID 36



=====
 DATABASE SIZE RFLDB_Production
 =====

Database growth over last month



=====
 DATABASE TABLESPACES RFLDB_Production
 =====

TOTAL DATABASE SIZE PER TABLESPACE

Date	Tablespace Name	Filesize (Gb)	Usedsize (Gb)	Percentage free
14-12-2015	ABSDATA	36	24	33
	INDX	108	84	22
13-12-2015	ABSDATA	36	24	33
	INDX	108	84	22
12-12-2015	ABSDATA	36	24	33
	INDX	108	84	22
11-12-2015	ABSDATA	36	24	33
	INDX	108	84	22
10-12-2015	ABSDATA	36	24	33
	INDX	108	84	22
9-12-2015	ABSDATA	36	24	33
	INDX	108	84	22
8-12-2015	ABSDATA	36	24	33
	INDX	108	84	22

Weekly SLA Customer Report

Customer RFL_Production
Database ID 36



=====
STANDBY DATABASE HEALTH RFL_Production
=====

Recovery lag for last 7 days

