

Weekly SLA Customer Report

Customer PCO Production
 Database ID 44



=====
 HARDDISK USAGE PCO_PRD_ORACLE1
 =====

	Total disk space on C (GB)	Free disk space on C (GB)	Total disk space on D (GB)	Free disk space on D (GB)
14-12-2015	279	217	838	162
13-12-2015	279	217	838	163
12-12-2015	279	217	838	164
11-12-2015	279	217	838	166
10-12-2015	279	217	838	169
9-12-2015	279	217	838	172
8-12-2015	279	217	838	175

=====
 HARDDISK USAGE PCO_PRD_ORACLE2
 =====

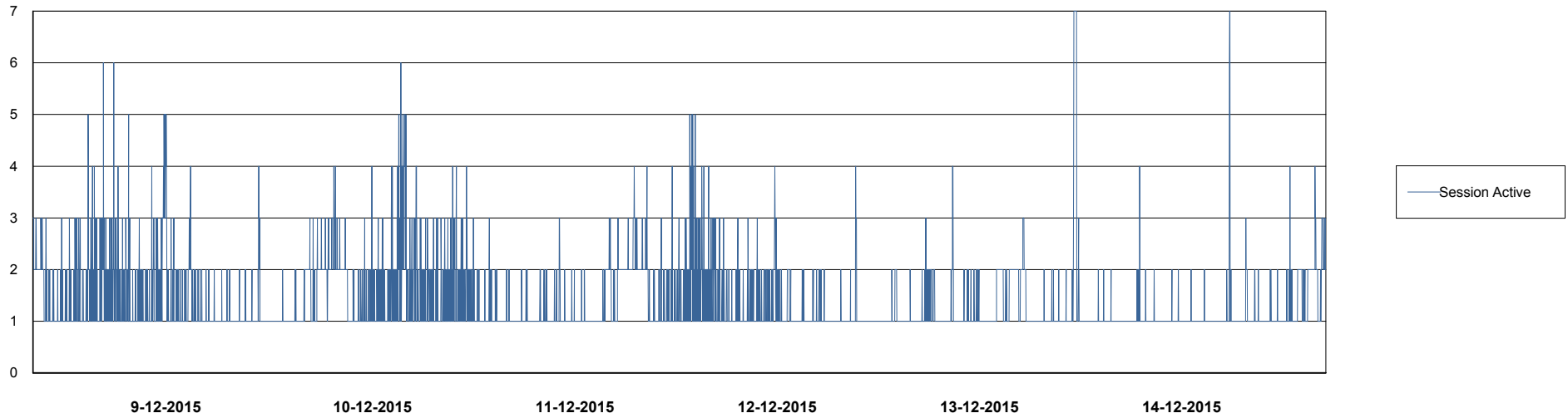
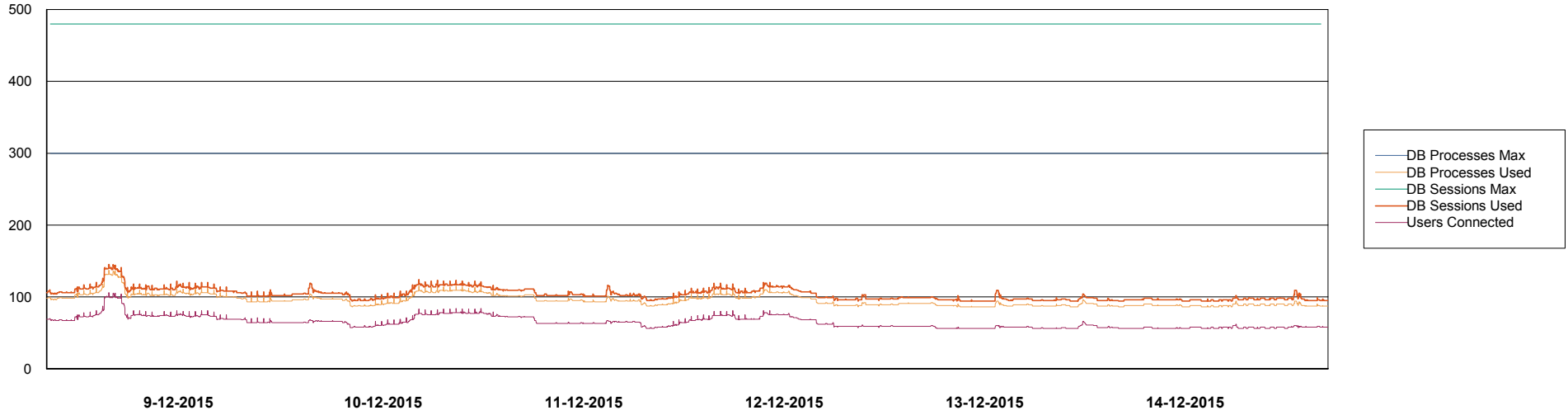
	Total disk space on C (GB)	Free disk space on C (GB)	Total disk space on D (GB)	Free disk space on D (GB)
14-12-2015	279	218	838	485
13-12-2015	279	218	838	486
12-12-2015	279	218	838	487
11-12-2015	279	218	838	489
10-12-2015	279	218	838	492
9-12-2015	279	218	838	495
8-12-2015	279	218	838	498

Weekly SLA Customer Report

Customer PCO Production
Database ID 44



DATABASE PERFORMANCE PCODB_Production

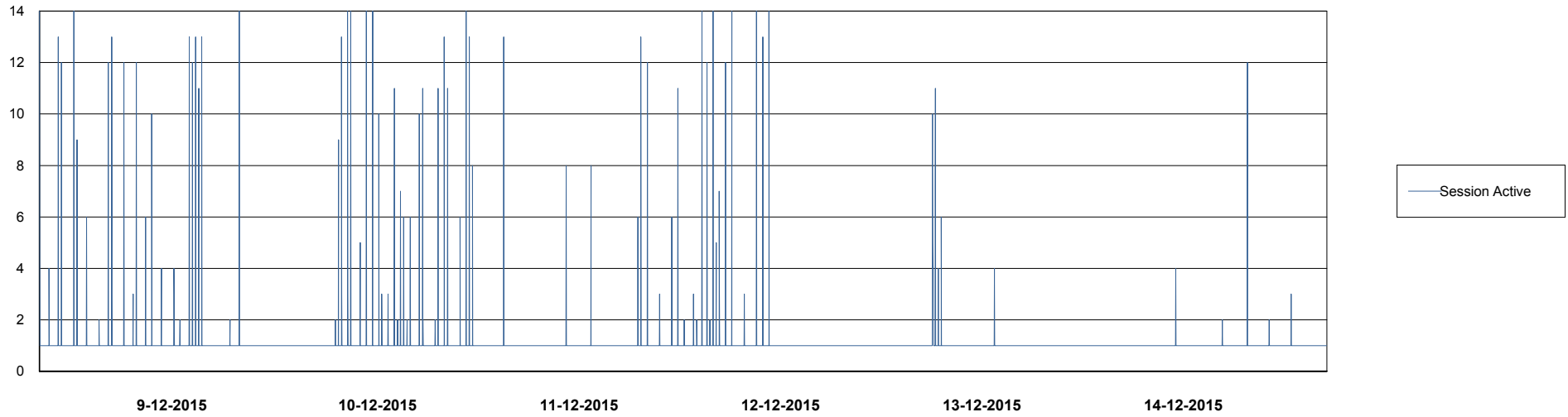
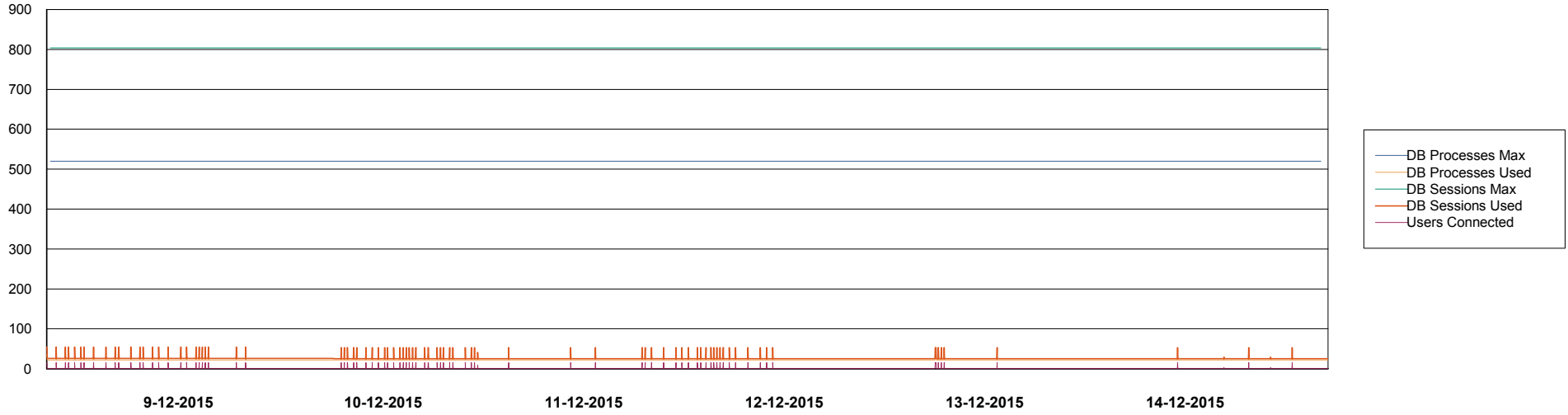


Weekly SLA Customer Report

Customer PCO Production
Database ID 44



DATABASE PERFORMANCE PCODB_Standby



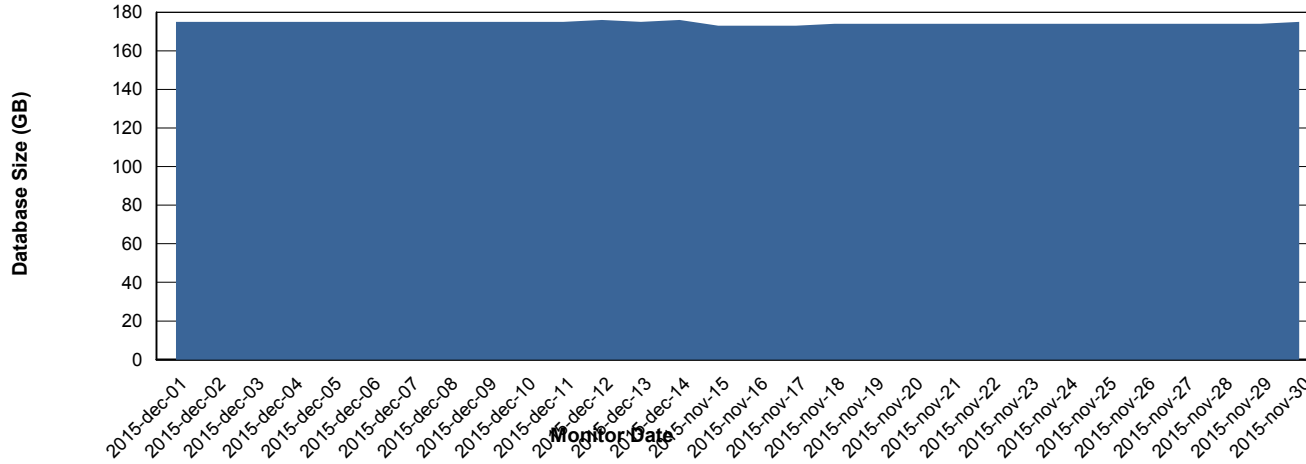
Weekly SLA Customer Report

Customer PCO Production
 Database ID 44



=====
 DATABASE SIZE PCODB_Production
 =====

Database growth over last month



=====
 DATABASE TABLESPACES PCODB_Production
 =====

TOTAL DATABASE SIZE PER TABLESPACE

Date	Tablespace Name	Filesize (Gb)	Usedsize (Gb)	Percentage free
14-12-2015	ABSDATA	81	67	17
	INDX	125	107	14
13-12-2015	ABSDATA	81	67	17
	INDX	125	107	14
12-12-2015	ABSDATA	81	67	17
	INDX	125	107	14
11-12-2015	ABSDATA	81	67	17
	INDX	125	107	14
10-12-2015	ABSDATA	81	67	17
	INDX	125	107	14
9-12-2015	ABSDATA	81	67	17
	INDX	125	107	14
8-12-2015	ABSDATA	81	67	17
	INDX	125	107	14

Weekly SLA Customer Report

Customer PCO Production
Database ID 44



=====
STANDBY DATABASE HEALTH PCO Production
=====

Recovery lag for last 7 days

