

Weekly SLA Customer Report

Customer NIX_Production
 Database ID 51



=====
 HARDDISK USAGE NIX_PRD_ABSAPP2
 =====

	Total disk space on C (GB)	Free disk space on C (GB)
19-12-2015	200	162
18-12-2015	200	162
17-12-2015	200	162
16-12-2015	200	162
15-12-2015	200	162
14-12-2015	200	163
13-12-2015	200	163

=====
 HARDDISK USAGE NIX_PRD_ABSWEB01
 =====

	Total disk space on C (GB)	Free disk space on C (GB)
19-12-2015	300	281
18-12-2015	300	281
17-12-2015	300	282
16-12-2015	300	282
15-12-2015	300	282
14-12-2015	300	282
13-12-2015	300	282

Weekly SLA Customer Report

Customer NIX_Production
 Database ID 51



=====

HARDDISK USAGE NIX_PRD_ORACLE_B11

=====

	Total disk space on C (GB)	Free disk space on C (GB)	Total disk space on E (GB)	Free disk space on E (GB)	Total disk space on F (GB)	Free disk space on F (GB)	Total disk space on G (GB)	Free disk space on G (GB)
19-12-2015	279	131	558	364	279	179	558	489
18-12-2015	279	134	558	364	279	179	558	489
17-12-2015	279	142	558	365	279	179	558	489
16-12-2015	279	144	558	366	279	179	558	489
15-12-2015	0	176	558	371	0	179	558	501
14-12-2015	279	195	558	372	279	179	558	512
13-12-2015	279	196	558	373	279	179	558	512

=====

HARDDISK USAGE NIX_PRD_ORCDB1

=====

	Total disk space on C (GB)	Free disk space on C (GB)	Total disk space on E (GB)	Free disk space on E (GB)	Total disk space on F (GB)	Free disk space on F (GB)	Total disk space on G (GB)	Free disk space on G (GB)
19-12-2015	279	180	558	465	558	458	279	145
18-12-2015	279	181	558	465	558	458	279	150
17-12-2015	279	180	558	465	558	458	279	155
16-12-2015	279	180	558	465	558	458	279	160
15-12-2015	279	181	558	465	558	456	279	169
14-12-2015	279	204	558	487	558	282	279	176
13-12-2015	279	204	558	487	558	282	279	174

Weekly SLA Customer Report

Customer NIX_Production
Database ID 51



HARDDISK USAGE NIX_PRD_ORCDB2

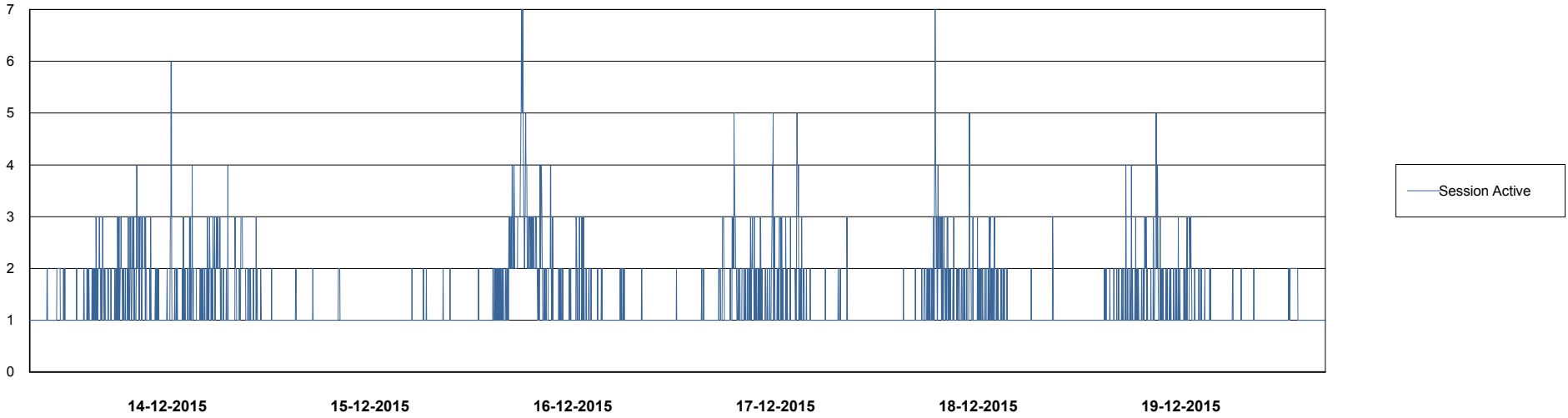
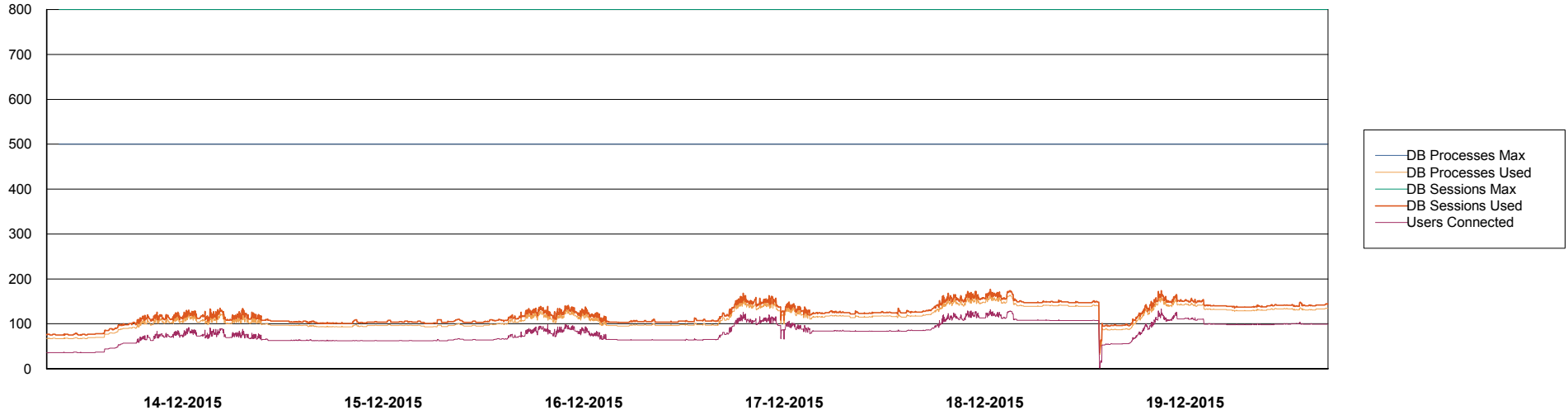
	Total disk space on C (GB)	Free disk space on C (GB)	Total disk space on E (GB)	Free disk space on E (GB)	Total disk space on F (GB)	Free disk space on F (GB)	Total disk space on G (GB)	Free disk space on G (GB)
19-12-2015	279	180	558	465	558	458	279	145
18-12-2015	279	181	558	465	558	458	279	150
17-12-2015	279	180	558	465	558	458	279	155
16-12-2015	279	180	558	465	558	458	279	160
15-12-2015	279	181	558	465	558	458	279	169

Weekly SLA Customer Report

Customer NIX_Production
Database ID 51



=====
DATABASE PERFORMANCE NIXDB_Standby
=====



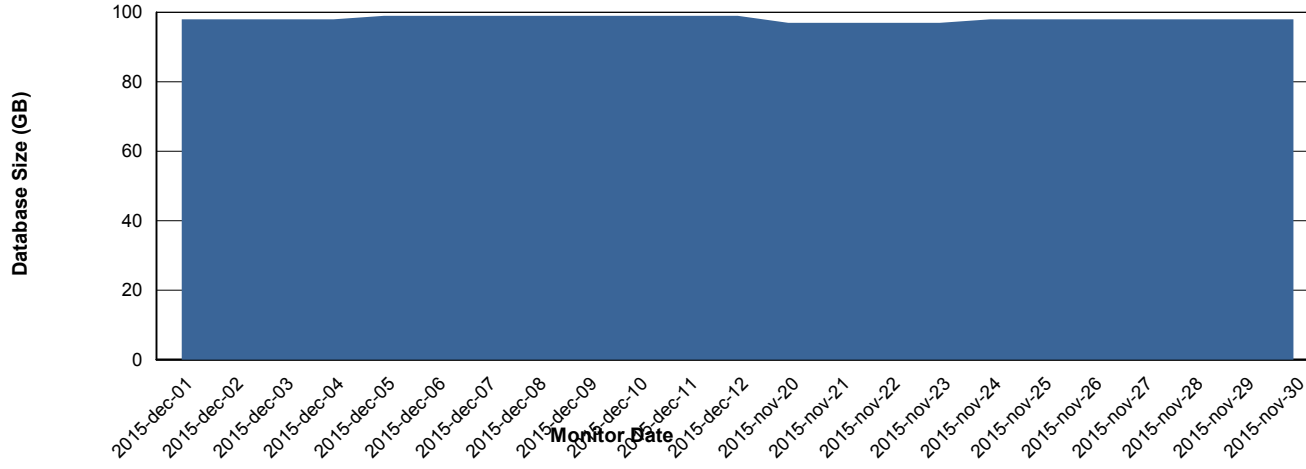
Weekly SLA Customer Report

Customer NIX_Production
Database ID 51



=====
DATABASE SIZE NIXDB_Production
=====

Database growth over last month



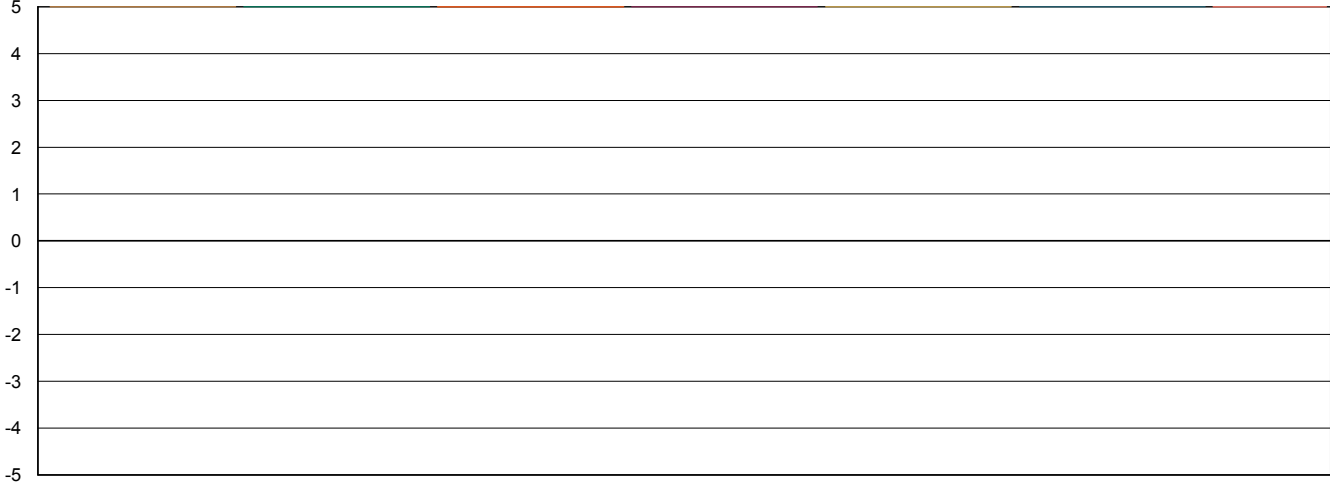
Weekly SLA Customer Report

Customer NIX_Production
Database ID 51



=====
STANDBY DATABASE HEALTH NIX_Production
=====

Recovery lag for last 7 days



- 12-12-2015
- 13-12-2015
- 14-12-2015
- 15-12-2015
- 16-12-2015
- 17-12-2015
- 18-12-2015
- 19-12-2015

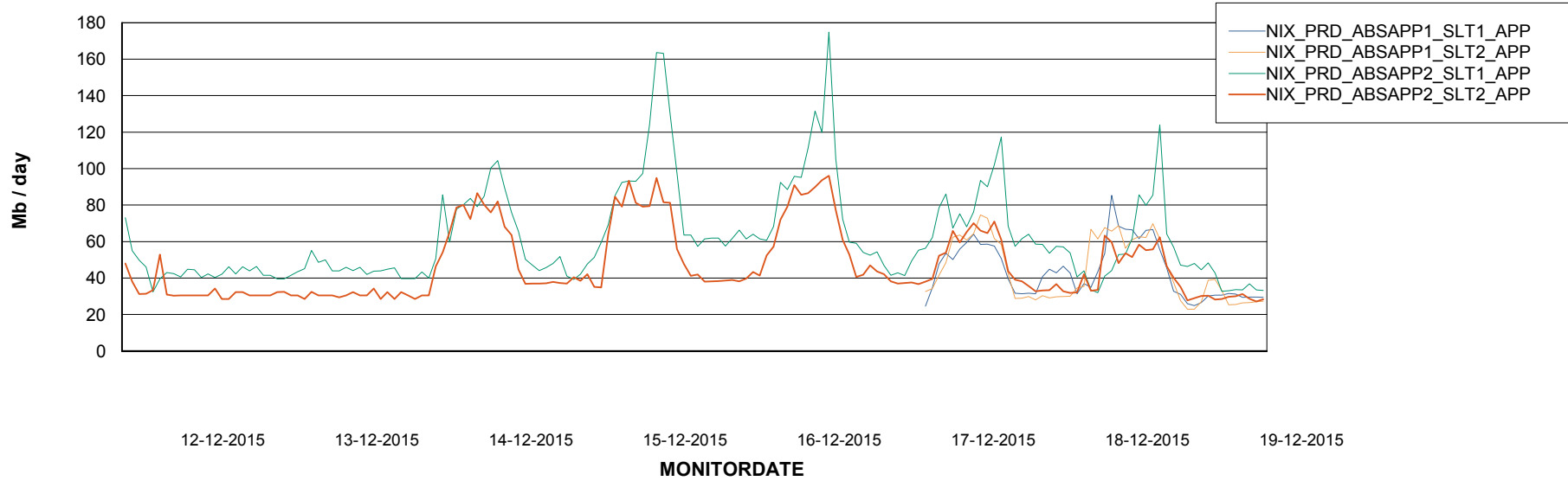
Weekly SLA Customer Report

Customer NIX_Production
Database ID 51



=====
ABSolute Application Server Services
=====

Avg memory used per ABS Server Service



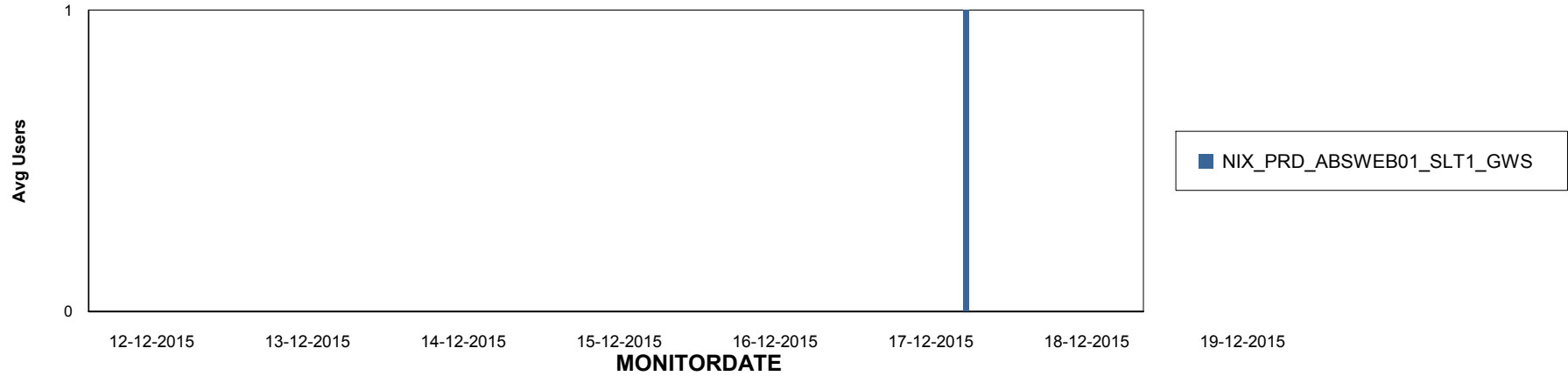
Weekly SLA Customer Report

Customer NIX_Production
Database ID 51

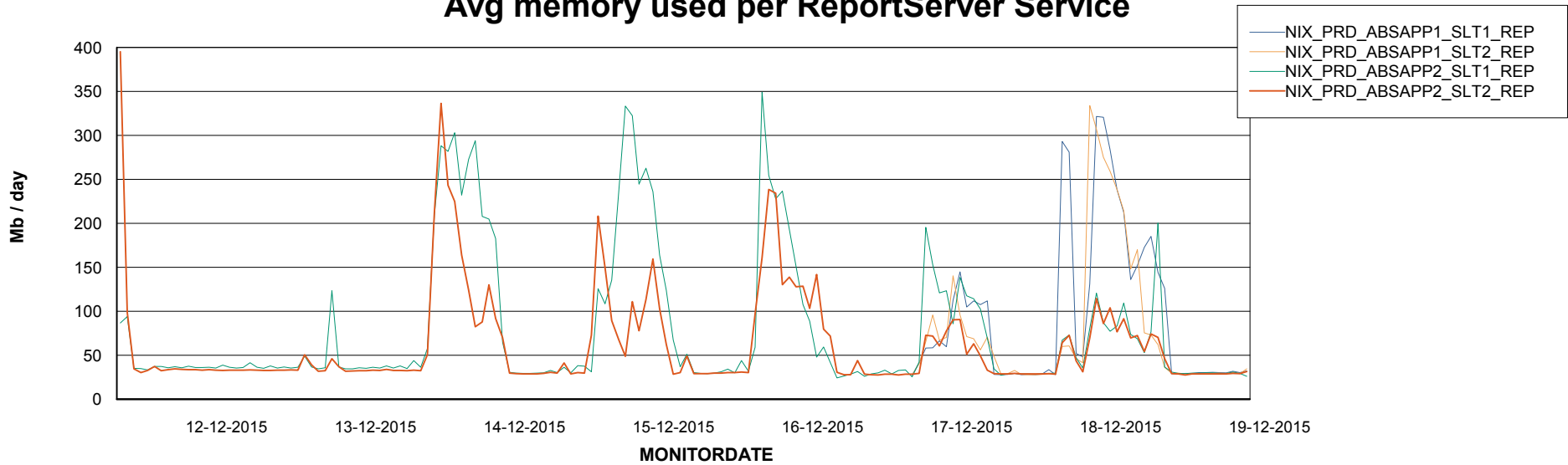


=====
ABSolute Application ReportServer Services
=====

Disaster per ReportServer



Avg memory used per ReportServer Service



Weekly SLA Customer Report

Customer NIX_Production
Database ID 51



Disaster per ABS component

