

# Weekly SLA Customer Report

Customer JWR Production  
 Database ID 43



=====  
 HARDDISK USAGE JWR\_PRD\_JWR-ABS-01  
 =====

	Used disk space on / (GB)	Total disk space on / (GB)	Free disk space on / (GB)
19-12-2015	32	49	14
18-12-2015	30	49	16
17-12-2015	29	49	17
16-12-2015	30	49	17
15-12-2015	30	49	16
14-12-2015	29	49	17
13-12-2015	29	49	17

=====  
 HARDDISK USAGE JWR\_PRD\_JWR-ABS-02  
 =====

	Used disk space on / (GB)	Total disk space on / (GB)	Free disk space on / (GB)
19-12-2015	35	49	11
18-12-2015	35	49	11
17-12-2015	35	49	11
16-12-2015	36	49	10
15-12-2015	36	49	11
14-12-2015	35	49	11
13-12-2015	35	49	11

## Weekly SLA Customer Report

Customer      JWR Production  
 Database ID    43



=====  
 HARDDISK USAGE    JWR\_PRD\_JWR-ODB-01  
 =====

	Used disk space on / (GB)	Total disk space on / (GB)	Free disk space on / (GB)
19-12-2015	104	148	36
18-12-2015	105	148	36
17-12-2015	105	148	36
16-12-2015	105	148	36
15-12-2015	105	148	36
14-12-2015	105	148	36
13-12-2015	104	148	36

=====  
 HARDDISK USAGE    JWR\_PRD\_JWR-ODB-02  
 =====

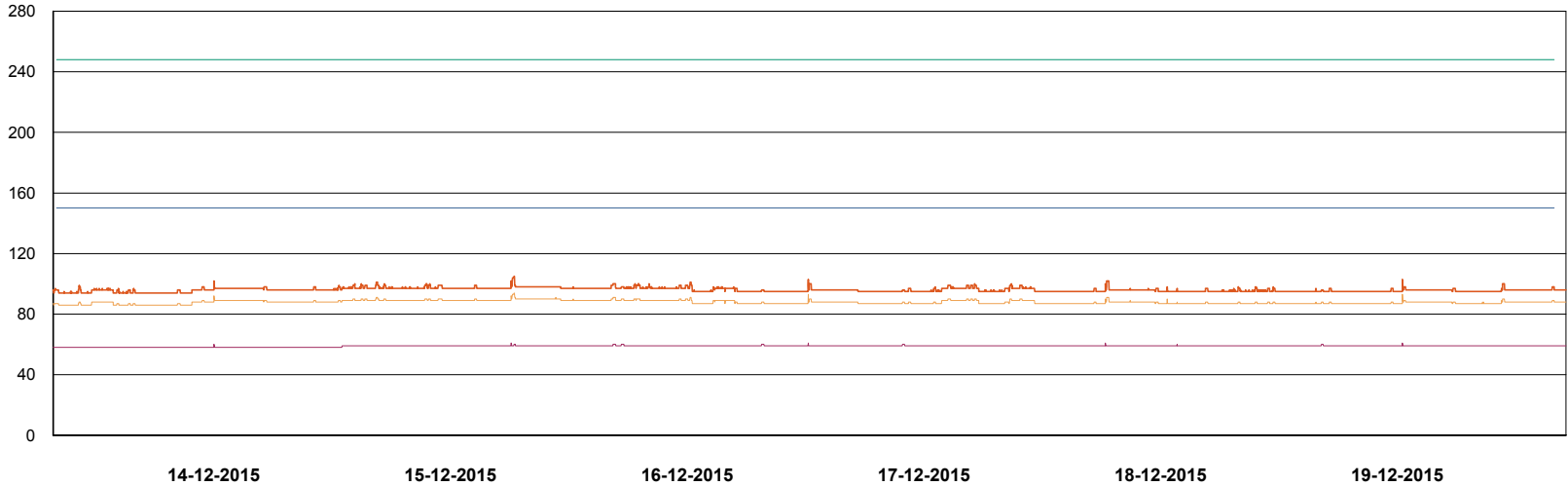
	Used disk space on / (GB)	Total disk space on / (GB)	Free disk space on / (GB)
19-12-2015	96	138	35
18-12-2015	96	138	35
17-12-2015	96	138	35
16-12-2015	96	138	35
15-12-2015	96	138	35
14-12-2015	96	138	35
13-12-2015	96	138	35

# Weekly SLA Customer Report

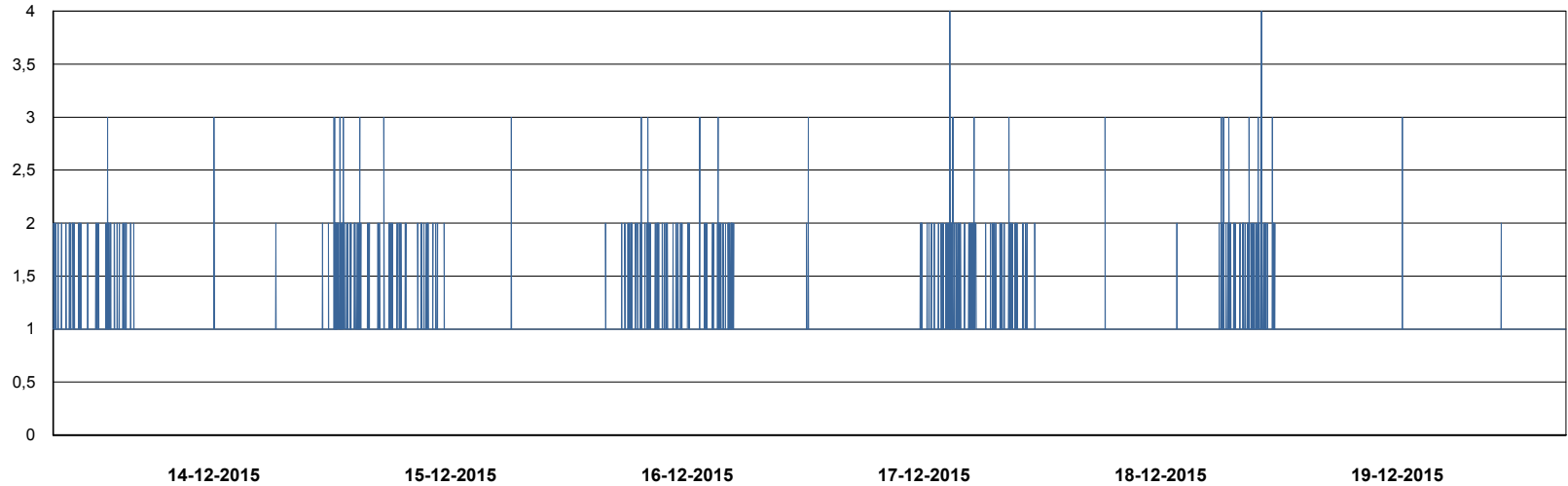
Customer JWR Production  
Database ID 43



DATABASE PERFORMANCE JWRDB\_Production



- DB Processes Max
- DB Processes Used
- DB Sessions Max
- DB Sessions Used
- Users Connected



- Session Active

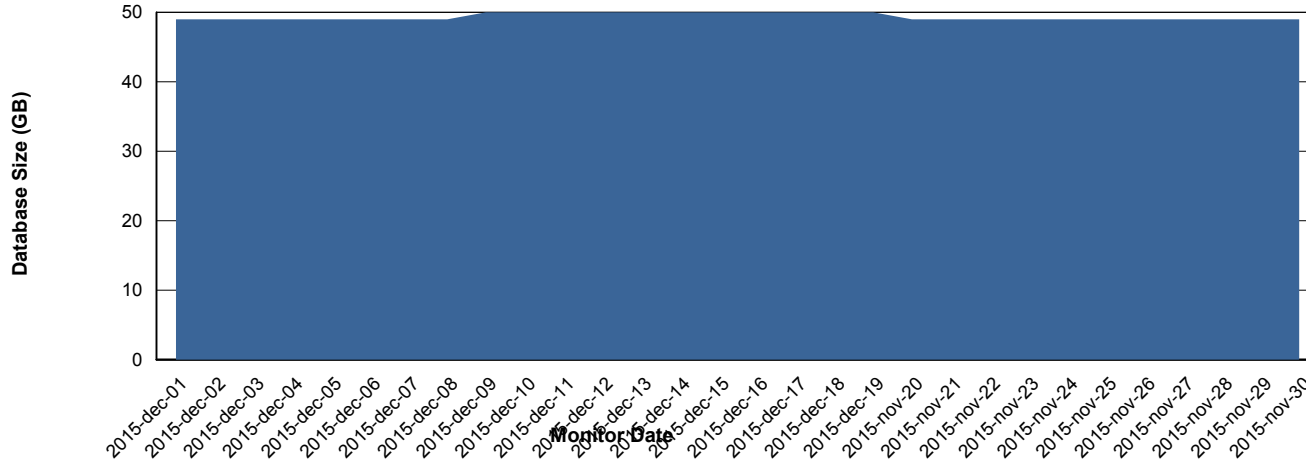
# Weekly SLA Customer Report

Customer JWR Production  
 Database ID 43



=====  
 DATABASE SIZE JWRDB\_Production  
 =====

## Database growth over last month



=====  
 DATABASE TABLESPACES JWRDB\_Production  
 =====

### TOTAL DATABASE SIZE PER TABLESPACE

Date	Tablespace Name	Filesize (Gb)	Usedsize (Gb)	Percentage free
19-12-2015	ABSDATA	18	14	22
	INDX	46	35	24
18-12-2015	ABSDATA	18	14	22
	INDX	46	35	24
17-12-2015	ABSDATA	18	14	22
	INDX	46	35	24
16-12-2015	ABSDATA	18	14	22
	INDX	46	35	24
15-12-2015	ABSDATA	18	14	22
	INDX	46	35	24
14-12-2015	ABSDATA	18	14	22
	INDX	46	35	24
13-12-2015	ABSDATA	18	14	22
	INDX	46	35	24

# Weekly SLA Customer Report

---

Customer JWR Production  
Database ID 43



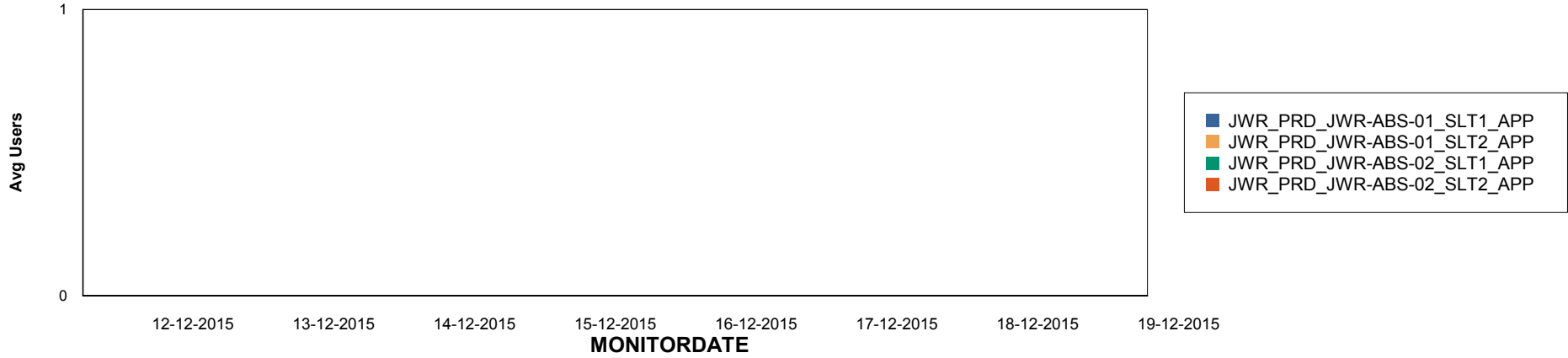
# Weekly SLA Customer Report

Customer JWR Production  
Database ID 43

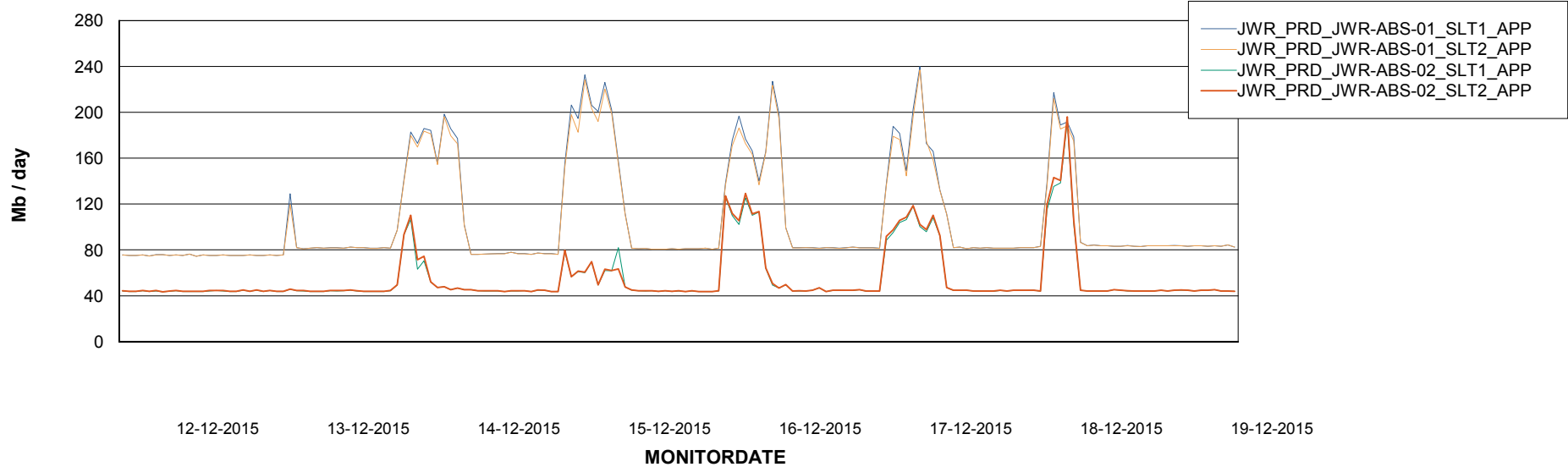


=====  
ABSolute Application Server Services  
=====

## Disaster per ABS Server



## Avg memory used per ABS Server Service



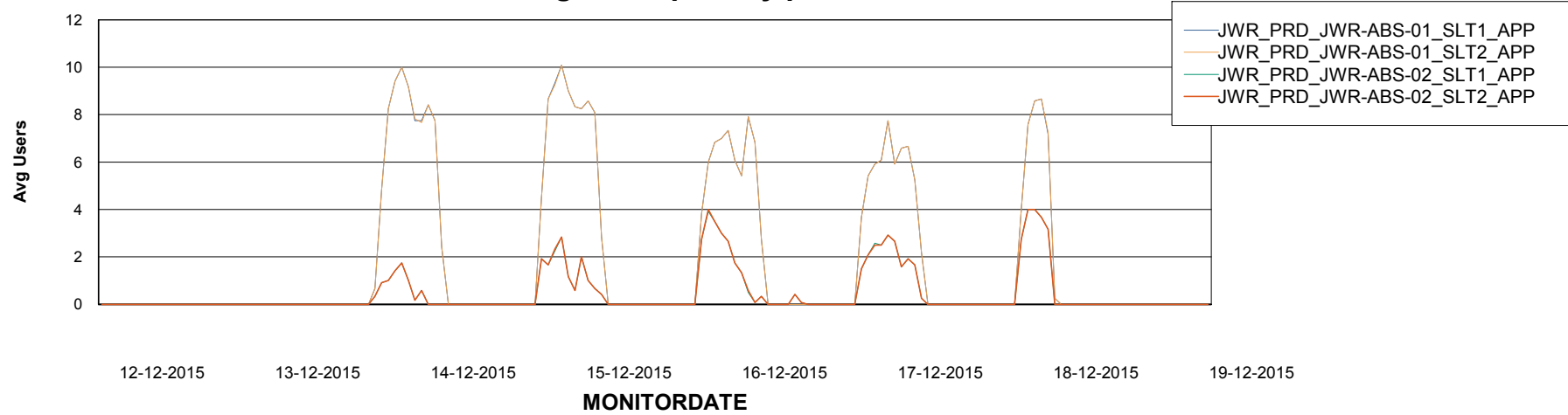
# Weekly SLA Customer Report

Customer JWR Production  
Database ID 43



=====  
ABSolute Application Server Services  
=====

### Avg users per day per ABS server



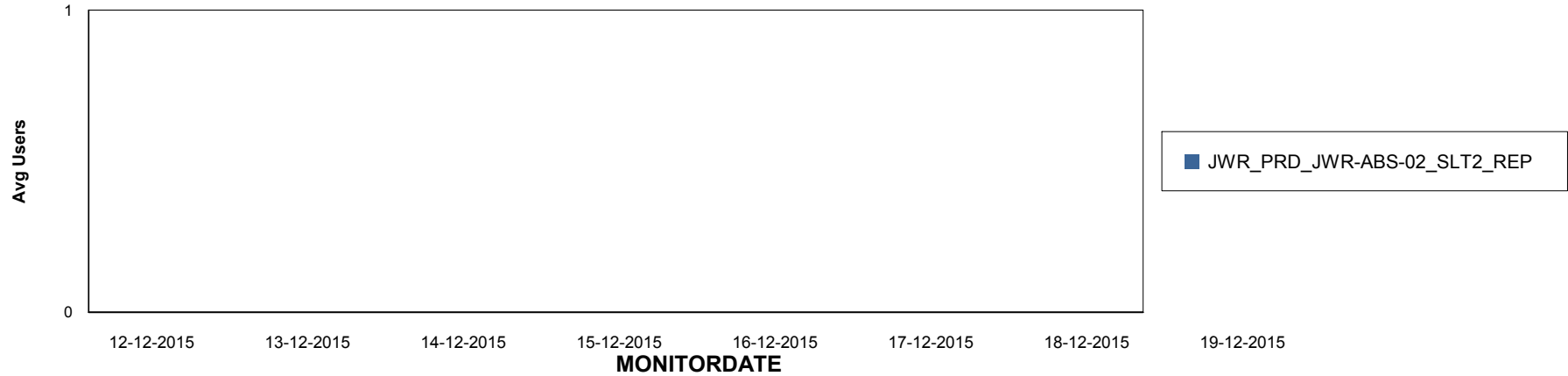
# Weekly SLA Customer Report

Customer JWR Production  
Database ID 43

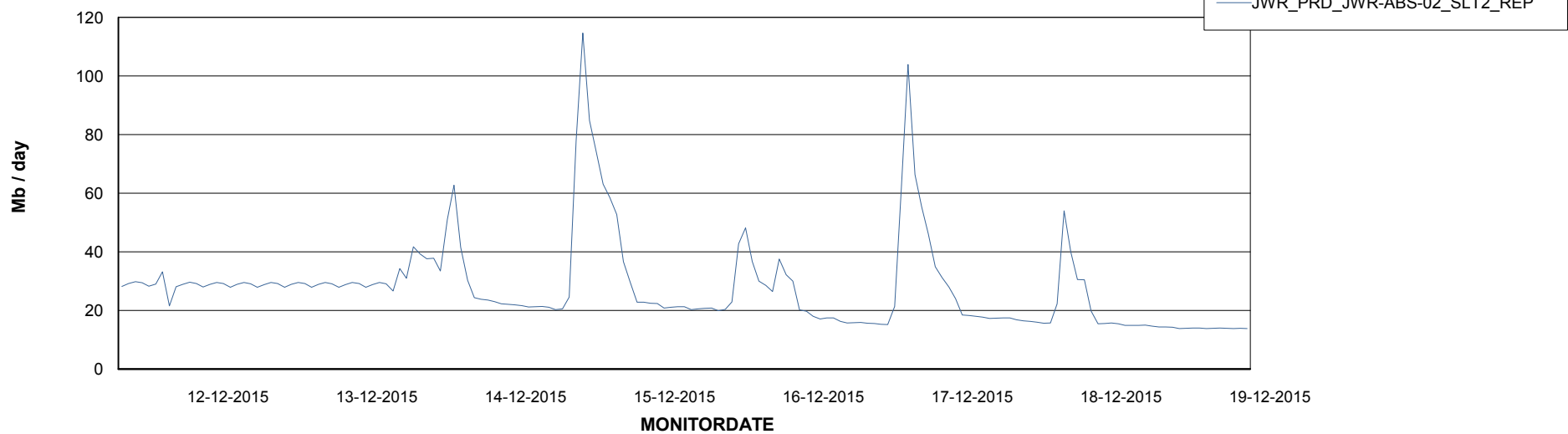


=====  
ABSolute Application ReportServer Services  
=====

## Disaster per ReportServer



## Avg memory used per ReportServer Service



# Weekly SLA Customer Report

Customer JWR Production  
Database ID 43



## Disaster per ABS component

