

Weekly SLA Customer Report

Customer NIX_Production
Database ID 51



=====
HARDDISK USAGE NIX_PRD_ABSAPP1
=====

	Total disk space on C (GB)	Free disk space on C (GB)
5-12-2015	200	172
4-12-2015	200	172
3-12-2015	200	172
2-12-2015	200	172
1-12-2015	200	172
30-11-2015	200	172
29-11-2015	200	172

=====
HARDDISK USAGE NIX_PRD_ABSAPP2
=====

	Total disk space on C (GB)	Free disk space on C (GB)
5-12-2015	200	162
4-12-2015	200	162
3-12-2015	200	162
2-12-2015	200	162
1-12-2015	200	162
30-11-2015	200	162
29-11-2015	200	162

Weekly SLA Customer Report

Customer NIX_Production
 Database ID 51



=====
 HARDDISK USAGE NIX_PRD_ABSWEB01
 =====

	Total disk space on C (GB)	Free disk space on C (GB)
5-12-2015	300	279
4-12-2015	300	279
3-12-2015	300	279
2-12-2015	300	279
1-12-2015	300	279
30-11-2015	300	280
29-11-2015	300	280

=====
 HARDDISK USAGE NIX_PRD_ORACLE_B11
 =====

	Total disk space on C (GB)	Free disk space on C (GB)	Total disk space on E (GB)	Free disk space on E (GB)	Total disk space on F (GB)	Free disk space on F (GB)	Total disk space on G (GB)	Free disk space on G (GB)
5-12-2015	279	203	558	387	558	457	279	233
4-12-2015	279	203	558	387	558	458	279	233
3-12-2015	279	203	558	387	558	458	279	233
2-12-2015	279	203	558	387	558	458	279	233
1-12-2015	279	203	558	387	558	458	279	233
30-11-2015	279	203	558	387	558	458	279	233
29-11-2015	279	203	558	387	558	458	279	233

Weekly SLA Customer Report

Customer NIX_Production
 Database ID 51



=====
 HARDDISK USAGE NIX_PRD_ORCDB1
 =====

	Total disk space on C (GB)	Free disk space on C (GB)	Total disk space on E (GB)	Free disk space on E (GB)	Total disk space on F (GB)	Free disk space on F (GB)	Total disk space on G (GB)	Free disk space on G (GB)
5-12-2015	279	61	558	492	558	457	279	166
4-12-2015	279	61	558	492	558	457	279	167
3-12-2015	279	35	558	492	558	457	279	169
2-12-2015	279	34	558	492	558	457	279	170
1-12-2015	279	48	558	492	558	457	279	173
30-11-2015	279	64	558	492	558	457	279	175
29-11-2015	279	64	558	492	558	457	279	176

=====
 HARDDISK USAGE NIX_PRD_ORCDB2
 =====

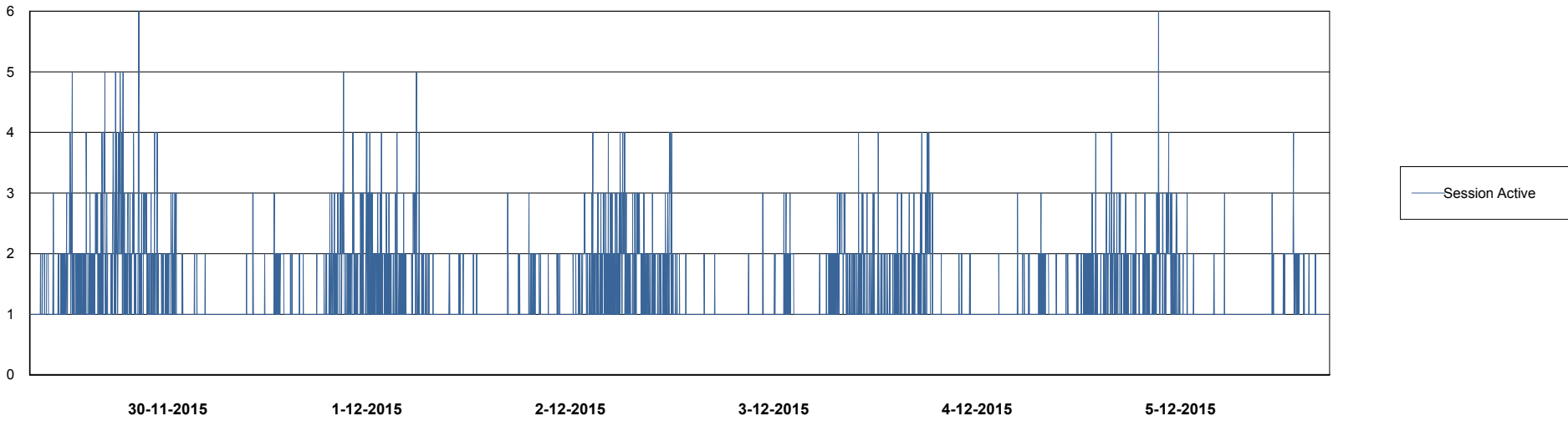
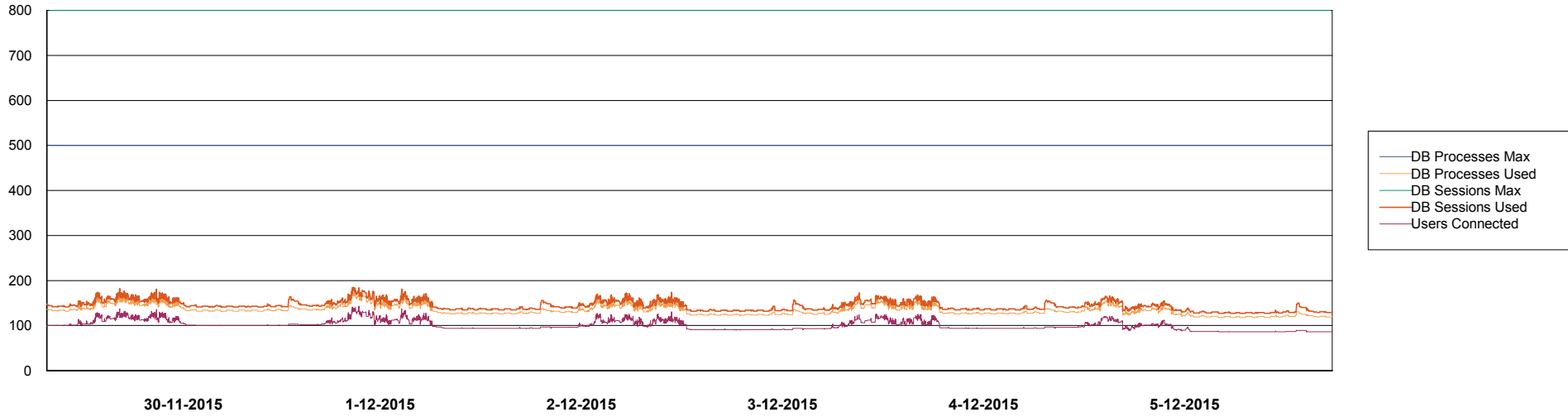
	Total disk space on C (GB)	Free disk space on C (GB)	Total disk space on E (GB)	Free disk space on E (GB)	Total disk space on F (GB)	Free disk space on F (GB)	Total disk space on G (GB)	Free disk space on G (GB)
5-12-2015	279	236	558	388	558	457	279	202
4-12-2015	279	236	558	388	558	457	279	203
3-12-2015	279	236	558	388	558	457	279	205
2-12-2015	279	236	558	388	558	457	279	207
1-12-2015	279	236	558	388	558	457	279	209
30-11-2015	279	236	558	388	558	457	279	211
29-11-2015	279	236	558	388	558	457	279	212

Weekly SLA Customer Report

Customer NIX_Production
Database ID 51



=====
DATABASE PERFORMANCE NIXDB_Production
=====



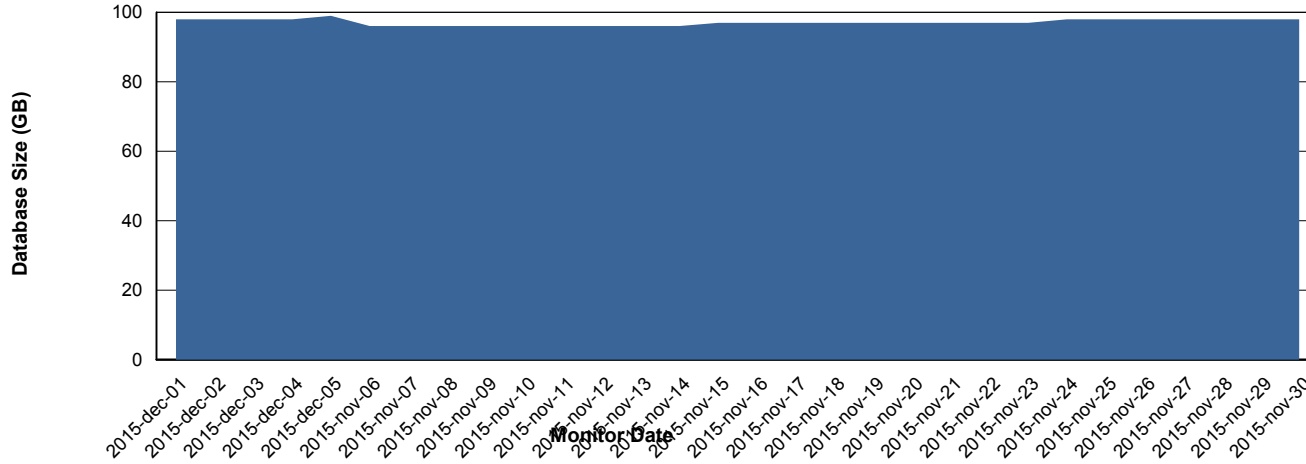
Weekly SLA Customer Report

Customer NIX_Production
 Database ID 51



=====
 DATABASE SIZE NIXDB_Production
 =====

Database growth over last month



=====
 DATABASE TABLESPACES NIXDB_Production
 =====

TOTAL DATABASE SIZE PER TABLESPACE

Date	Tablespace Name	Filesize (Gb)	Usedsize (Gb)	Percentage free
5-12-2015	ABSDATA	50	37	26
	INDX	100	60	40
4-12-2015	ABSDATA	50	37	26
	INDX	100	60	40
3-12-2015	ABSDATA	50	37	26
	INDX	100	60	40
2-12-2015	ABSDATA	50	37	26
	INDX	100	60	40
1-12-2015	ABSDATA	50	37	26
	INDX	100	60	40
30-11-2015	ABSDATA	50	37	26
	INDX	100	60	40
29-11-2015	ABSDATA	50	37	26
	INDX	100	60	40

Weekly SLA Customer Report

Customer NIX_Production
Database ID 51



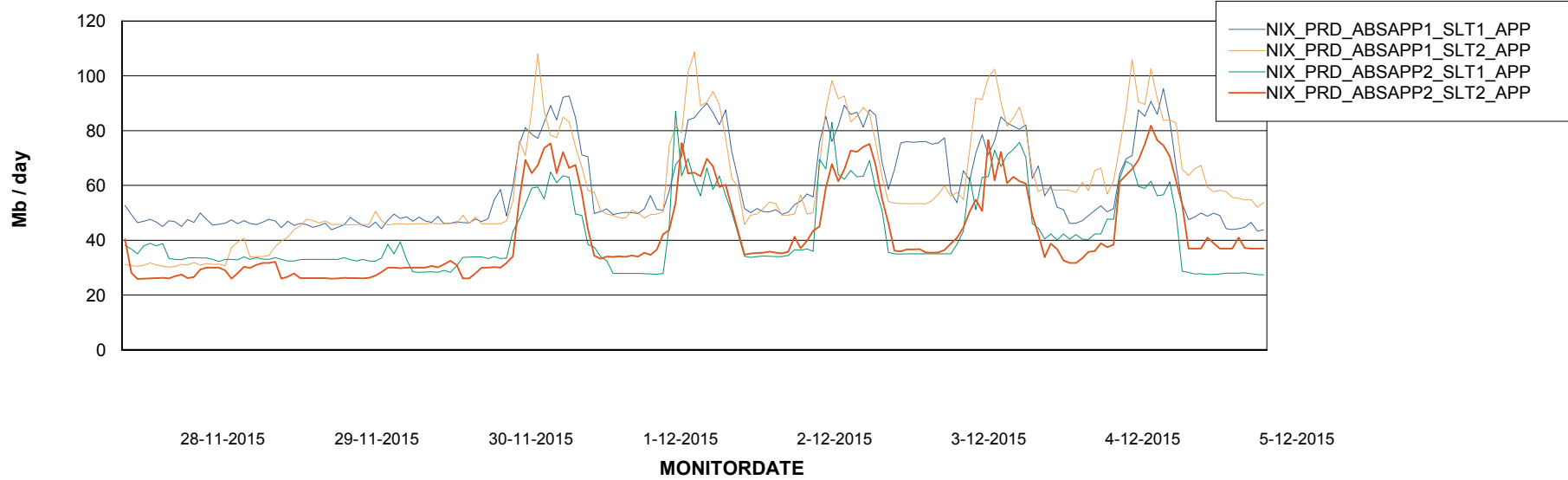
Weekly SLA Customer Report

Customer NIX_Production
Database ID 51



=====
ABSolute Application Server Services
=====

Avg memory used per ABS Server Service



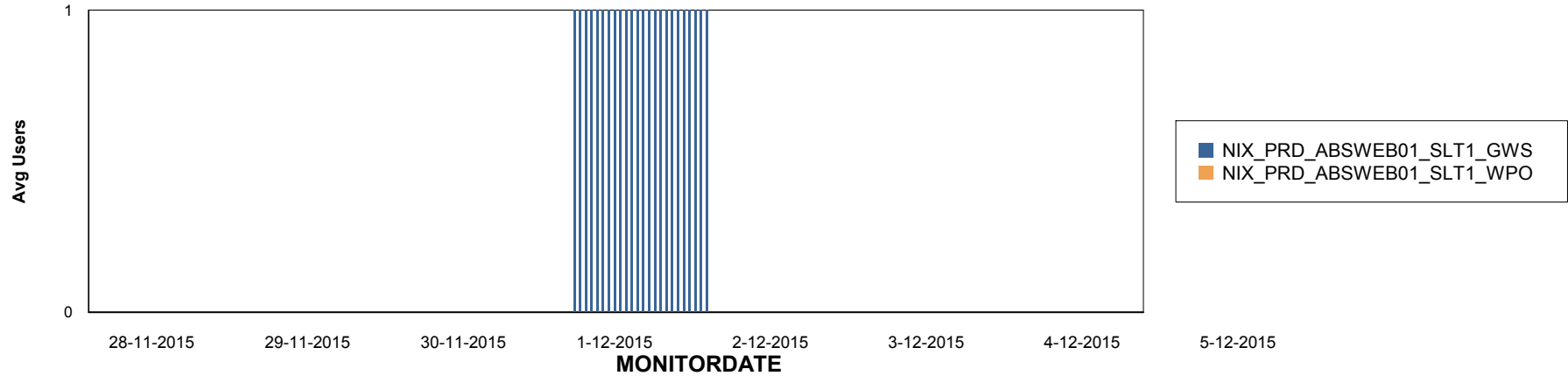
Weekly SLA Customer Report

Customer NIX_Production
Database ID 51

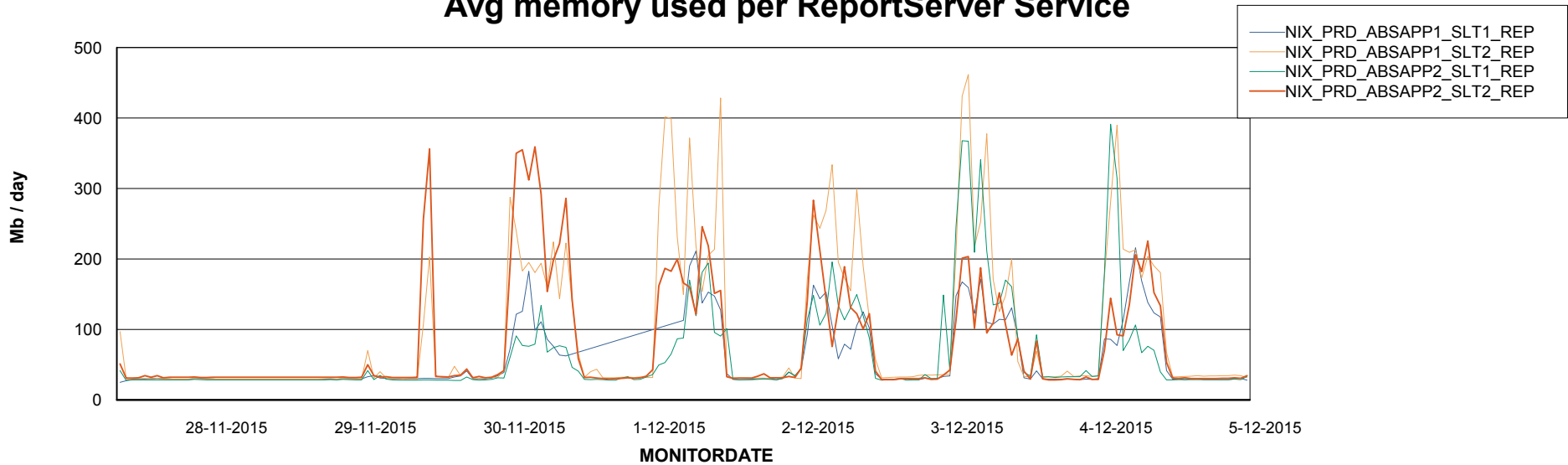


=====
ABSolute Application ReportServer Services
=====

Disaster per ReportServer



Avg memory used per ReportServer Service



Weekly SLA Customer Report

Customer NIX_Production
Database ID 51



Disaster per ABS component

