

Weekly SLA Customer Report

Customer NIX_Production
Database ID 51



=====
HARDDISK USAGE NIX_PRD_ABSAPP1
=====

	Total disk space on C (GB)	Free disk space on C (GB)
28-11-2015	200	172
27-11-2015	200	172
26-11-2015	200	172
25-11-2015	200	172
24-11-2015	200	175
23-11-2015	200	175
22-11-2015	200	175

=====
HARDDISK USAGE NIX_PRD_ABSAPP2
=====

	Total disk space on C (GB)	Free disk space on C (GB)
28-11-2015	200	162
27-11-2015	200	162
26-11-2015	200	162
25-11-2015	200	162
24-11-2015	200	164
23-11-2015	200	165
22-11-2015	200	165

Weekly SLA Customer Report

Customer NIX_Production
 Database ID 51



=====
 HARDDISK USAGE NIX_PRD_ABSWEB01
 =====

	Total disk space on C (GB)	Free disk space on C (GB)
28-11-2015	300	280
27-11-2015	300	280
26-11-2015	300	280
25-11-2015	300	279
24-11-2015	300	279
23-11-2015	300	279
22-11-2015	300	279

=====
 HARDDISK USAGE NIX_PRD_ORACLE_B11
 =====

	Total disk space on C (GB)	Free disk space on C (GB)	Total disk space on E (GB)	Free disk space on E (GB)	Total disk space on F (GB)	Free disk space on F (GB)	Total disk space on G (GB)	Free disk space on G (GB)
28-11-2015	279	203	558	387	558	457	279	233
27-11-2015	279	203	558	387	558	458	279	233
26-11-2015	279	203	558	387	558	458	279	233
25-11-2015	279	203	558	387	558	458	279	233
24-11-2015	279	203	558	386	558	457	279	233
23-11-2015	279	203	558	387	558	458	279	233
22-11-2015	279	203	558	387	558	458	279	233

Weekly SLA Customer Report

Customer NIX_Production
 Database ID 51



=====
 HARDDISK USAGE NIX_PRD_ORCDB1
 =====

	Total disk space on C (GB)	Free disk space on C (GB)	Total disk space on E (GB)	Free disk space on E (GB)	Total disk space on F (GB)	Free disk space on F (GB)	Total disk space on G (GB)	Free disk space on G (GB)
28-11-2015	279	64	558	492	558	457	279	178
27-11-2015	279	64	558	492	558	457	279	179
26-11-2015	279	64	558	492	558	457	279	74
25-11-2015	279	64	558	492	558	457	279	43
24-11-2015	279	64	558	492	558	457	279	46
23-11-2015	279	64	558	492	558	457	279	48
22-11-2015	279	64	558	492	558	457	279	49

=====
 HARDDISK USAGE NIX_PRD_ORCDB2
 =====

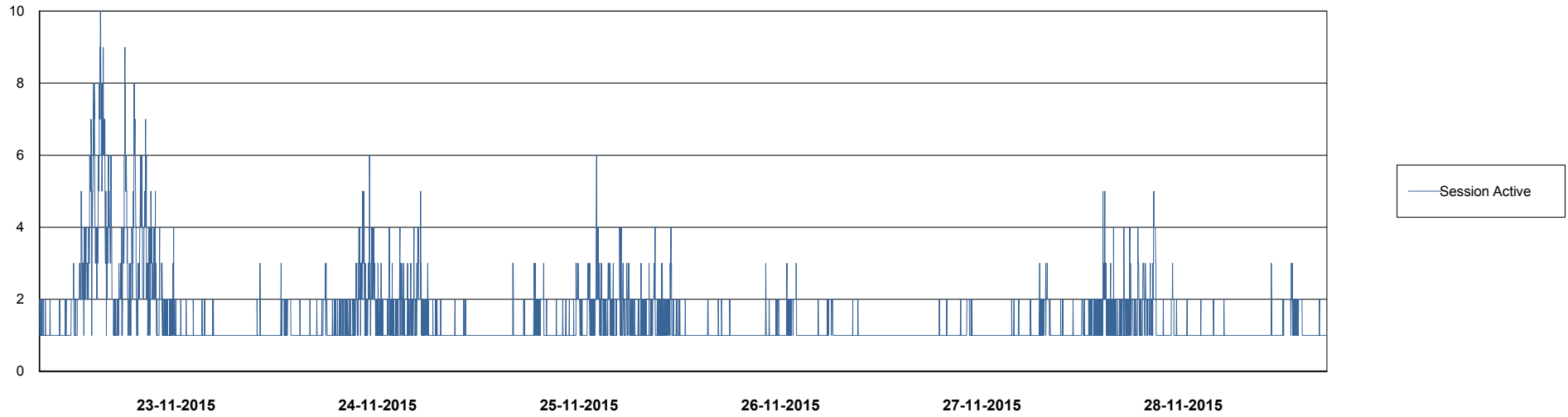
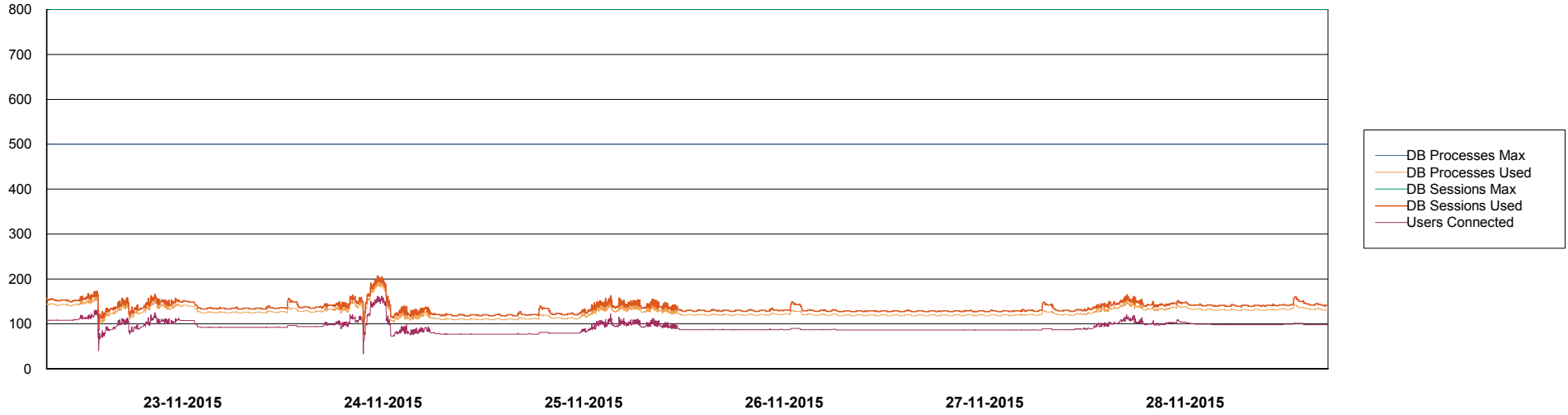
	Total disk space on C (GB)	Free disk space on C (GB)	Total disk space on E (GB)	Free disk space on E (GB)	Total disk space on F (GB)	Free disk space on F (GB)	Total disk space on G (GB)	Free disk space on G (GB)
28-11-2015	279	236	558	388	558	457	279	214
27-11-2015	279	236	558	388	558	457	279	215
26-11-2015	279	236	558	388	558	457	279	95
25-11-2015	279	236	558	388	558	457	279	60
24-11-2015	279	236	558	388	558	457	279	63
23-11-2015	279	236	558	388	558	457	279	65
22-11-2015	279	236	558	388	558	457	279	66

Weekly SLA Customer Report

Customer NIX_Production
Database ID 51



DATABASE PERFORMANCE NIXDB_Production



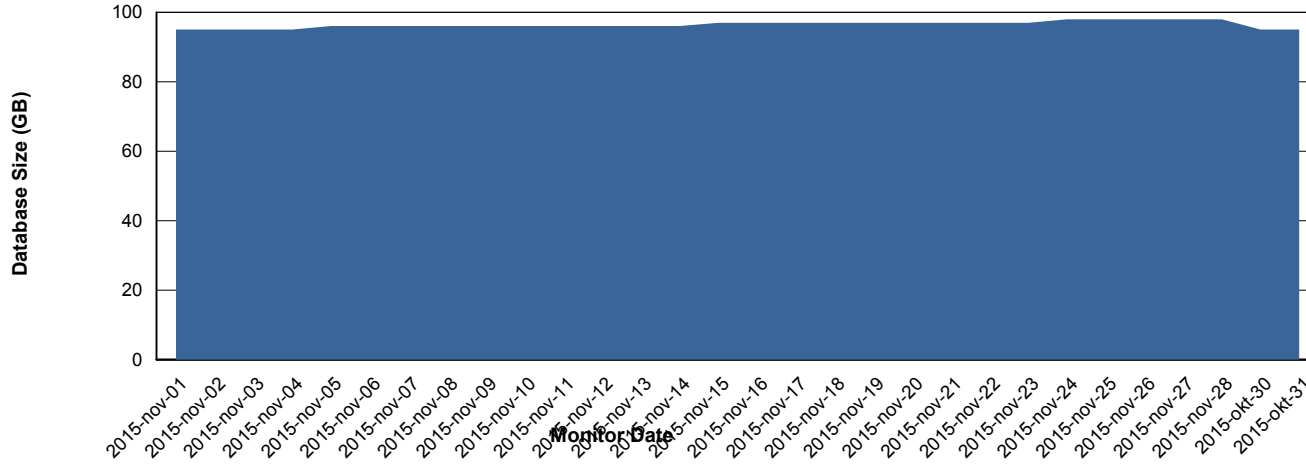
Weekly SLA Customer Report

Customer NIX_Production
 Database ID 51



=====
 DATABASE SIZE NIXDB_Production
 =====

Database growth over last month



=====
 DATABASE TABLESPACES NIXDB_Production
 =====

TOTAL DATABASE SIZE PER TABLESPACE

Date	Tablespace Name	Filesize (Gb)	Usedsize (Gb)	Percentage free
28-11-2015	ABSDATA	50	37	26
	INDX	100	60	40
27-11-2015	ABSDATA	50	37	26
	INDX	100	60	40
26-11-2015	ABSDATA	50	37	26
	INDX	100	60	40
25-11-2015	ABSDATA	50	37	26
	INDX	100	60	40
24-11-2015	ABSDATA	50	37	26
	INDX	100	60	40
23-11-2015	ABSDATA	50	37	26
	INDX	100	60	40
22-11-2015	ABSDATA	50	36	28
	INDX	100	59	41

Weekly SLA Customer Report

Customer NIX_Production
Database ID 51



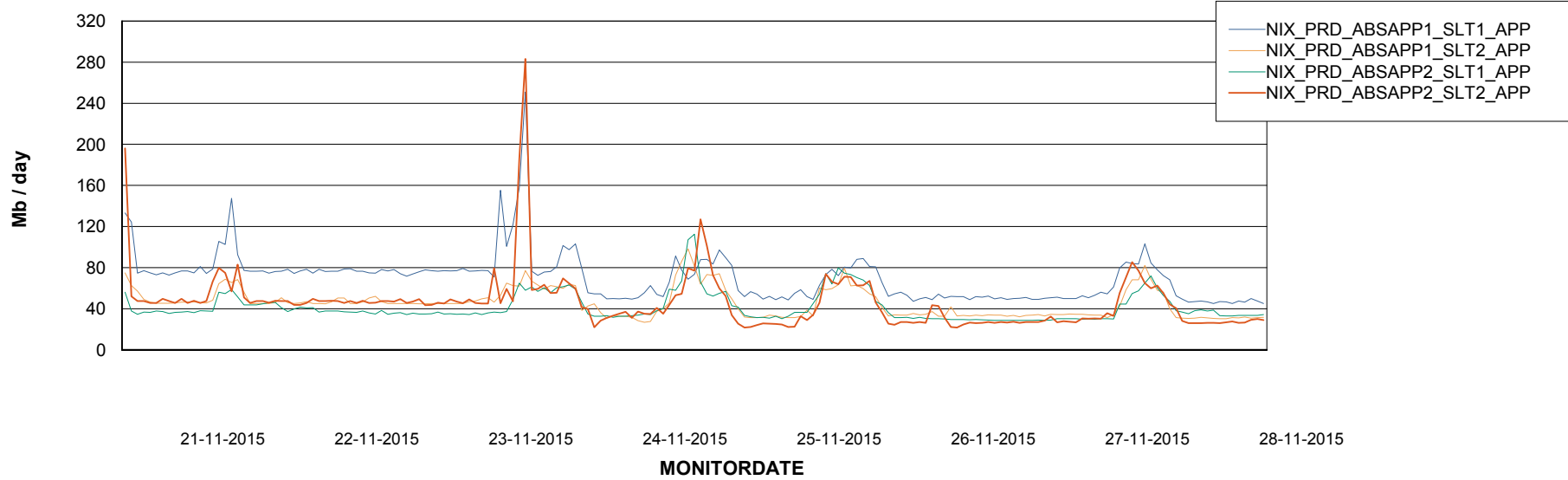
Weekly SLA Customer Report

Customer NIX_Production
Database ID 51



=====
ABSolute Application Server Services
=====

Avg memory used per ABS Server Service



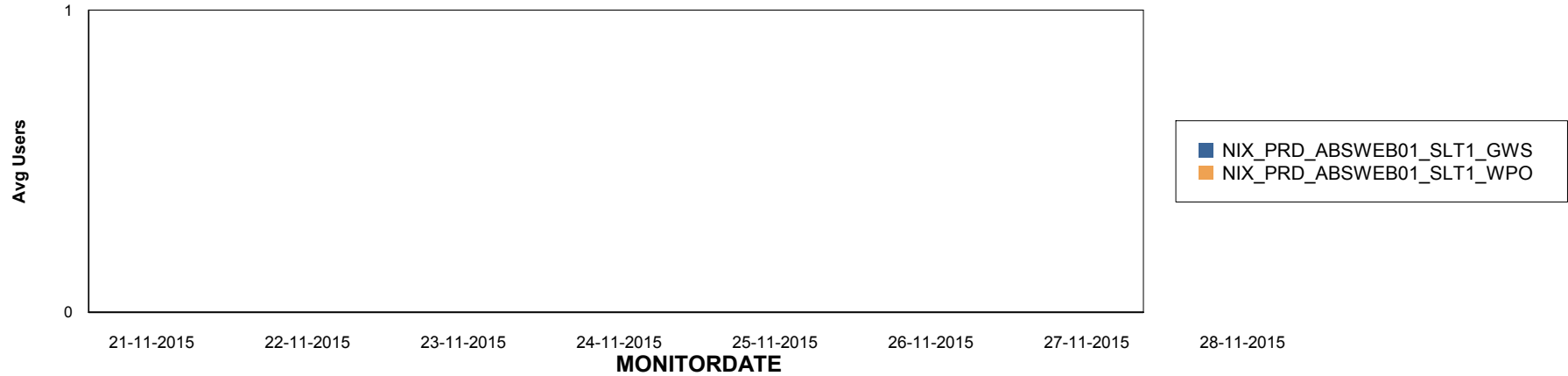
Weekly SLA Customer Report

Customer NIX_Production
Database ID 51

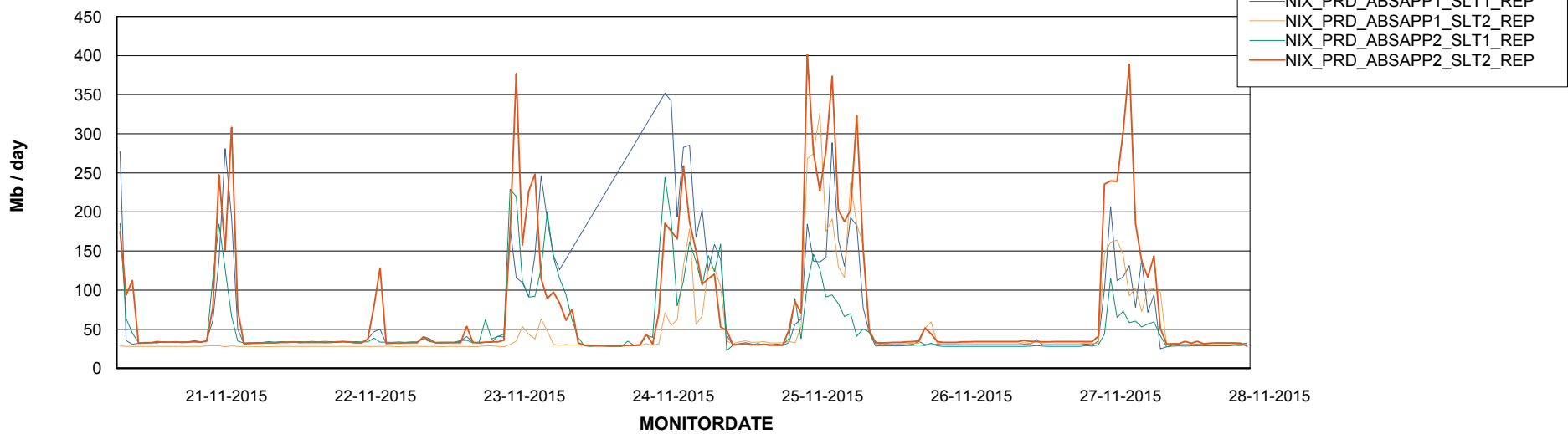


=====
ABSolute Application ReportServer Services
=====

Disaster per ReportServer



Avg memory used per ReportServer Service



Weekly SLA Customer Report

Customer NIX_Production
Database ID 51



Disaster per ABS component

