

Weekly SLA Customer Report

Customer NIX_Production
Database ID 51



=====
HARDDISK USAGE NIX_PRD_ABSAPP1
=====

	Total disk space on C (GB)	Free disk space on C (GB)
21-11-2015	200	175
20-11-2015	200	175
19-11-2015	200	175
18-11-2015	200	175
17-11-2015	200	175
16-11-2015	200	175
15-11-2015	200	175

=====
HARDDISK USAGE NIX_PRD_ABSAPP2
=====

	Total disk space on C (GB)	Free disk space on C (GB)
21-11-2015	200	165
20-11-2015	200	165
19-11-2015	200	165
18-11-2015	200	165
17-11-2015	200	165
16-11-2015	200	165
15-11-2015	200	165

Weekly SLA Customer Report

Customer NIX_Production
 Database ID 51



=====
 HARDDISK USAGE NIX_PRD_ABSWEB01
 =====

	Total disk space on C (GB)	Free disk space on C (GB)
21-11-2015	300	279
20-11-2015	300	279
19-11-2015	300	279
18-11-2015	300	279
17-11-2015	300	279
16-11-2015	300	280
15-11-2015	300	280

=====
 HARDDISK USAGE NIX_PRD_ORACLE_B11
 =====

	Total disk space on C (GB)	Free disk space on C (GB)	Total disk space on E (GB)	Free disk space on E (GB)	Total disk space on F (GB)	Free disk space on F (GB)	Total disk space on G (GB)	Free disk space on G (GB)
21-11-2015	279	203	558	386	558	457	279	233
20-11-2015	279	203	558	386	558	457	279	233
19-11-2015	279	203	558	386	558	457	279	233
18-11-2015	279	203	558	386	558	457	279	233
17-11-2015	279	203	558	386	558	457	279	233
16-11-2015	279	203	558	387	558	458	279	234
15-11-2015	279	203	558	387	558	457	279	234

Weekly SLA Customer Report

Customer NIX_Production
 Database ID 51



=====
 HARDDISK USAGE NIX_PRD_ORCDB1
 =====

	Total disk space on C (GB)	Free disk space on C (GB)	Total disk space on E (GB)	Free disk space on E (GB)	Total disk space on F (GB)	Free disk space on F (GB)	Total disk space on G (GB)	Free disk space on G (GB)
21-11-2015	279	64	558	492	558	457	279	51
20-11-2015	279	64	558	492	558	457	279	53
19-11-2015	279	64	558	492	558	457	279	55
18-11-2015	279	64	558	492	558	457	279	57
17-11-2015	279	64	558	492	558	457	279	60
16-11-2015	279	64	558	492	558	457	279	62
15-11-2015	279	64	558	492	558	457	279	63

=====
 HARDDISK USAGE NIX_PRD_ORCDB2
 =====

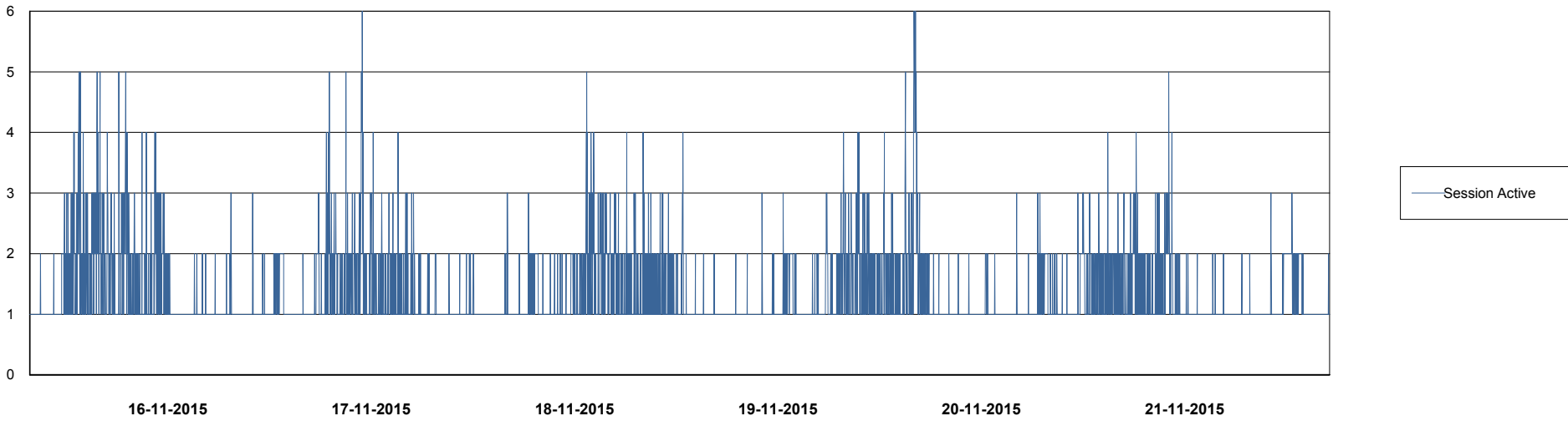
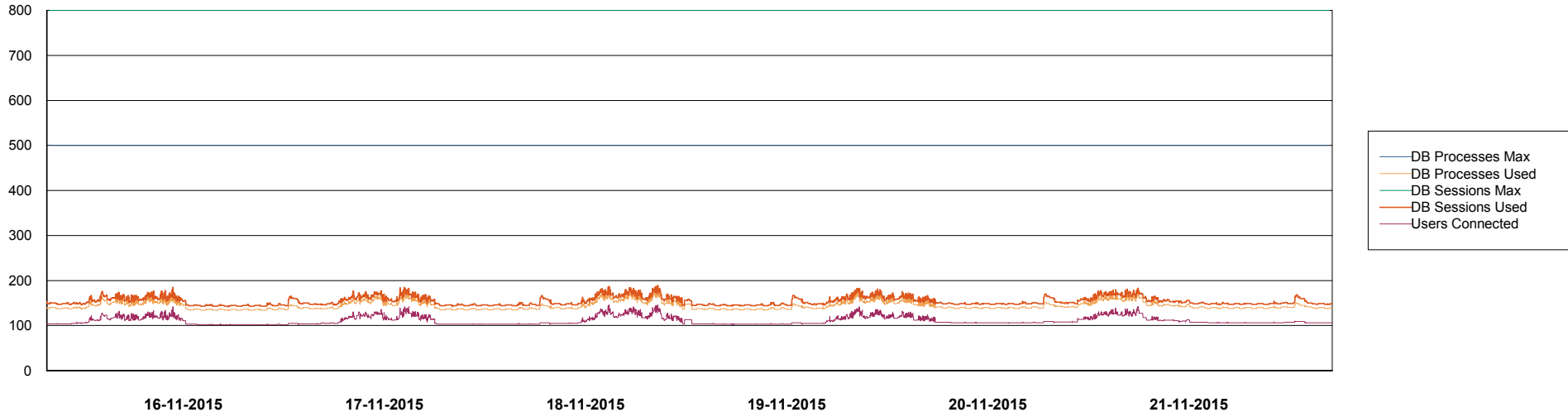
	Total disk space on C (GB)	Free disk space on C (GB)	Total disk space on E (GB)	Free disk space on E (GB)	Total disk space on F (GB)	Free disk space on F (GB)	Total disk space on G (GB)	Free disk space on G (GB)
21-11-2015	279	236	558	388	558	457	279	68
20-11-2015	279	236	558	388	558	457	279	70
19-11-2015	279	236	558	388	558	457	279	72
18-11-2015	279	236	558	388	558	457	279	74
17-11-2015	279	236	558	388	558	457	279	77
16-11-2015	279	236	558	388	558	457	279	79
15-11-2015	279	236	558	388	558	457	279	80

Weekly SLA Customer Report

Customer NIX_Production
Database ID 51



DATABASE PERFORMANCE NIXDB_Production



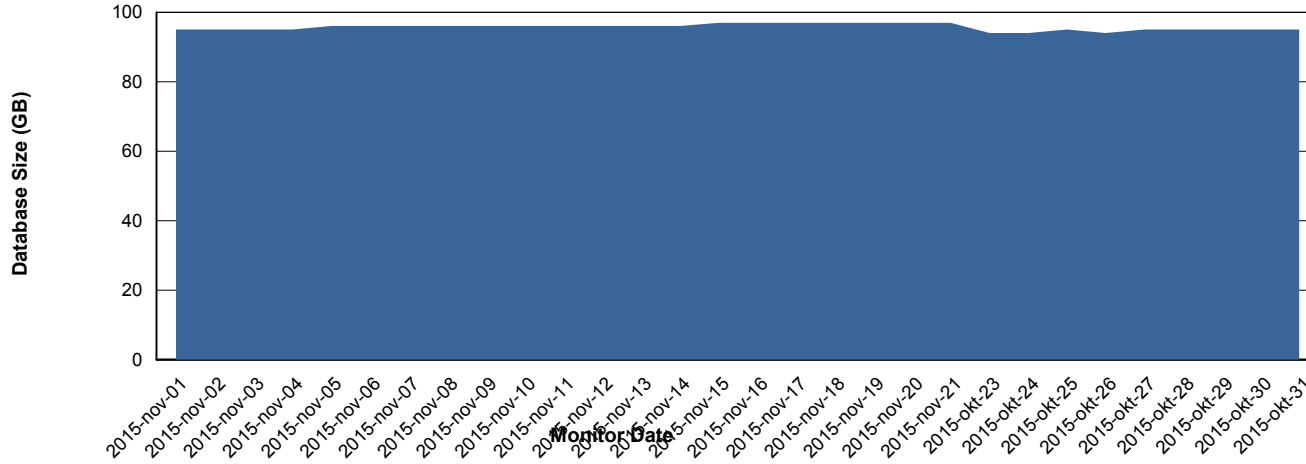
Weekly SLA Customer Report

Customer NIX_Production
 Database ID 51



=====
 DATABASE SIZE NIXDB_Production
 =====

Database growth over last month



=====
 DATABASE TABLESPACES NIXDB_Production
 =====

TOTAL DATABASE SIZE PER TABLESPACE

Date	Tablespace Name	Filesize (Gb)	Usedsize (Gb)	Percentage free
21-11-2015	ABSDATA	50	36	28
	INDX	100	59	41
20-11-2015	ABSDATA	50	36	28
	INDX	100	59	41
19-11-2015	ABSDATA	50	36	28
	INDX	100	59	41
18-11-2015	ABSDATA	50	36	28
	INDX	100	59	41
17-11-2015	ABSDATA	50	36	28
	INDX	100	59	41
16-11-2015	ABSDATA	50	36	28
	INDX	100	59	41
15-11-2015	ABSDATA	50	36	28
	INDX	100	59	41

Weekly SLA Customer Report

Customer NIX_Production
Database ID 51



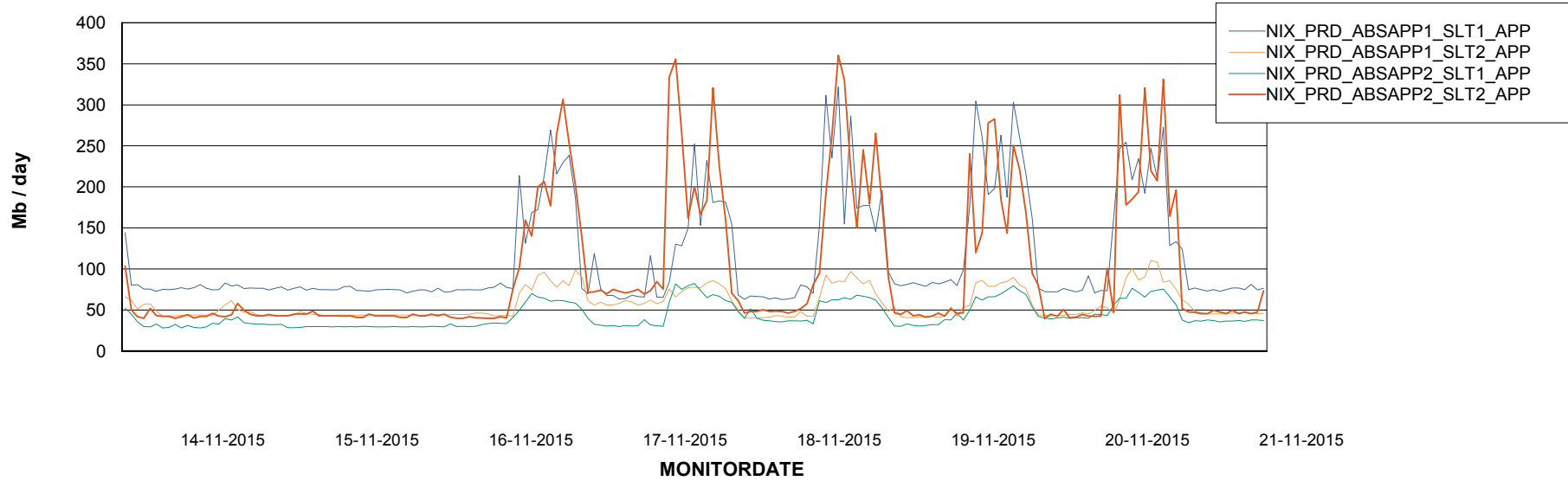
Weekly SLA Customer Report

Customer NIX_Production
Database ID 51



=====
ABSolute Application Server Services
=====

Avg memory used per ABS Server Service



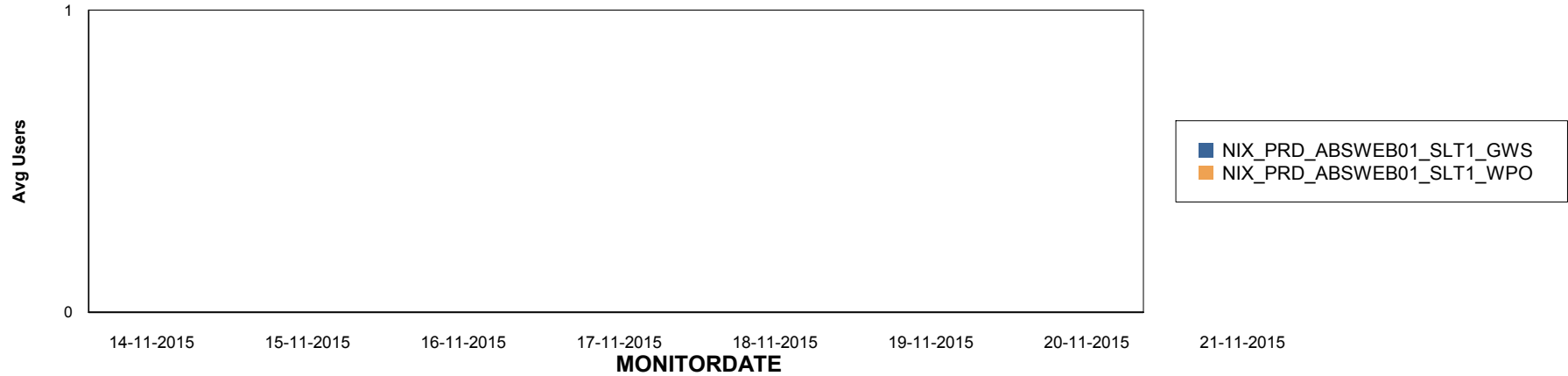
Weekly SLA Customer Report

Customer NIX_Production
Database ID 51

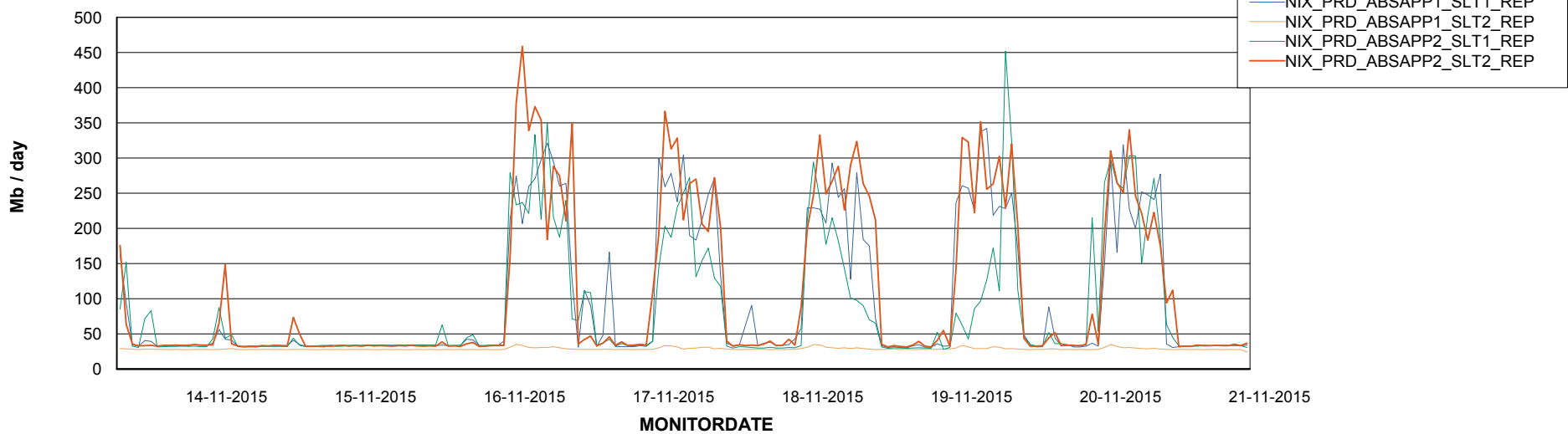


=====
ABSolute Application ReportServer Services
=====

Disaster per ReportServer



Avg memory used per ReportServer Service



Weekly SLA Customer Report

Customer NIX_Production
Database ID 51



Disaster per ABS component

