

Weekly SLA Customer Report

Customer JWR Production
Database ID 43



=====
HARDDISK USAGE JWR_PRD_JWR-ABS-01
=====

	Used disk space on / (GB)	Total disk space on / (GB)	Free disk space on / (GB)
21-11-2015	29	49	17
20-11-2015	29	49	17
19-11-2015	29	49	17
18-11-2015	29	49	17
17-11-2015	29	49	17
16-11-2015	29	49	17
15-11-2015	29	49	17

=====
HARDDISK USAGE JWR_PRD_JWR-ABS-02
=====

	Used disk space on / (GB)	Total disk space on / (GB)	Free disk space on / (GB)
21-11-2015	35	49	12
20-11-2015	35	49	12
19-11-2015	35	49	12
18-11-2015	35	49	12
17-11-2015	35	49	12
16-11-2015	35	49	12
15-11-2015	35	49	12

Weekly SLA Customer Report

Customer JWR Production
Database ID 43



=====
HARDDISK USAGE JWR_PRD_JWR-ODB-01
=====

	Used disk space on / (GB)	Total disk space on / (GB)	Free disk space on / (GB)
21-11-2015	97	148	44
20-11-2015	97	148	44
19-11-2015	97	148	44
18-11-2015	97	148	44
17-11-2015	98	148	43
16-11-2015	98	148	43
15-11-2015	97	148	44

=====
HARDDISK USAGE JWR_PRD_JWR-ODB-02
=====

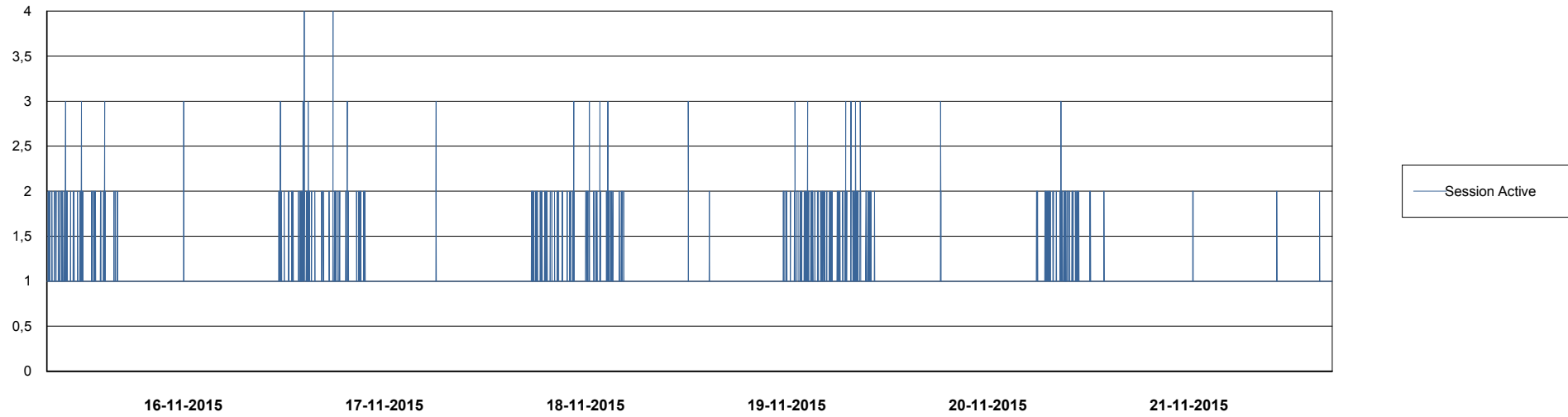
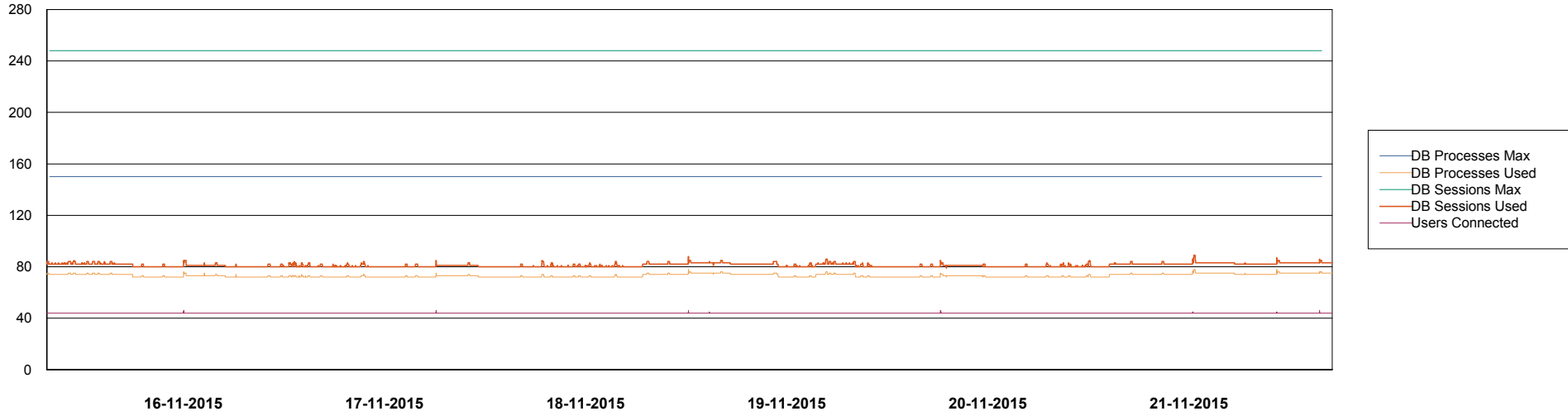
	Used disk space on / (GB)	Total disk space on / (GB)	Free disk space on / (GB)
21-11-2015	94	138	36
20-11-2015	95	138	36
19-11-2015	94	138	36
18-11-2015	95	138	36
17-11-2015	95	138	36
16-11-2015	95	138	36
15-11-2015	95	138	36

Weekly SLA Customer Report

Customer JWR Production
Database ID 43



DATABASE PERFORMANCE JWRDB_Production



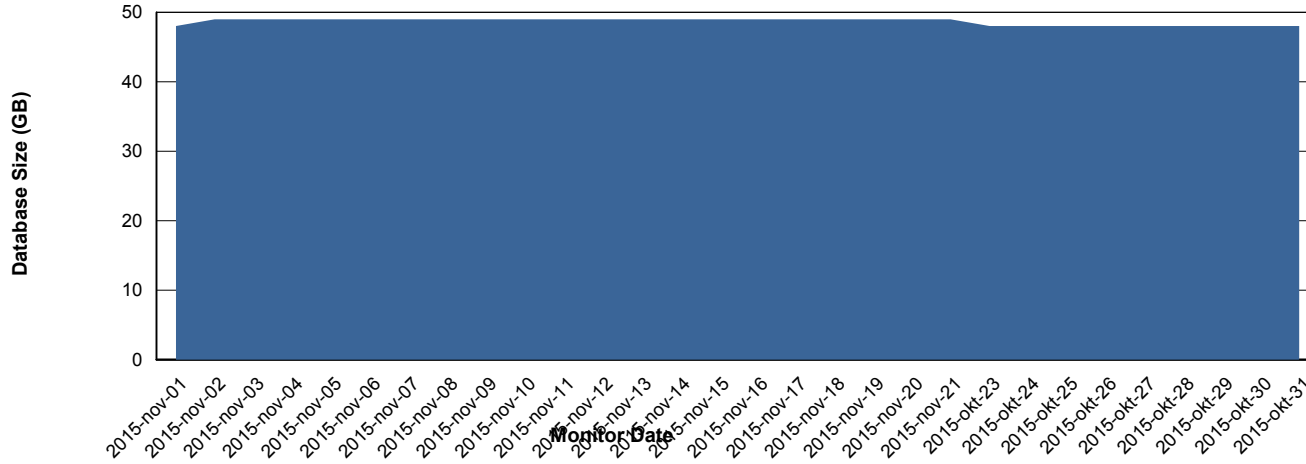
Weekly SLA Customer Report

Customer JWR Production
 Database ID 43



=====
 DATABASE SIZE JWRDB_Production
 =====

Database growth over last month



=====
 DATABASE TABLESPACES JWRDB_Production
 =====

TOTAL DATABASE SIZE PER TABLESPACE

Date	Tablespace Name	Filesize (Gb)	Usedsize (Gb)	Percentage free
21-11-2015	ABSDATA	18	14	22
	INDX	40	34	15
20-11-2015	ABSDATA	18	14	22
	INDX	40	34	15
19-11-2015	ABSDATA	18	14	22
	INDX	40	34	15
18-11-2015	ABSDATA	18	14	22
	INDX	40	34	15
17-11-2015	ABSDATA	18	14	22
	INDX	40	34	15
16-11-2015	ABSDATA	18	14	22
	INDX	40	34	15
15-11-2015	ABSDATA	18	14	22
	INDX	40	34	15

Weekly SLA Customer Report

Customer JWR Production
Database ID 43



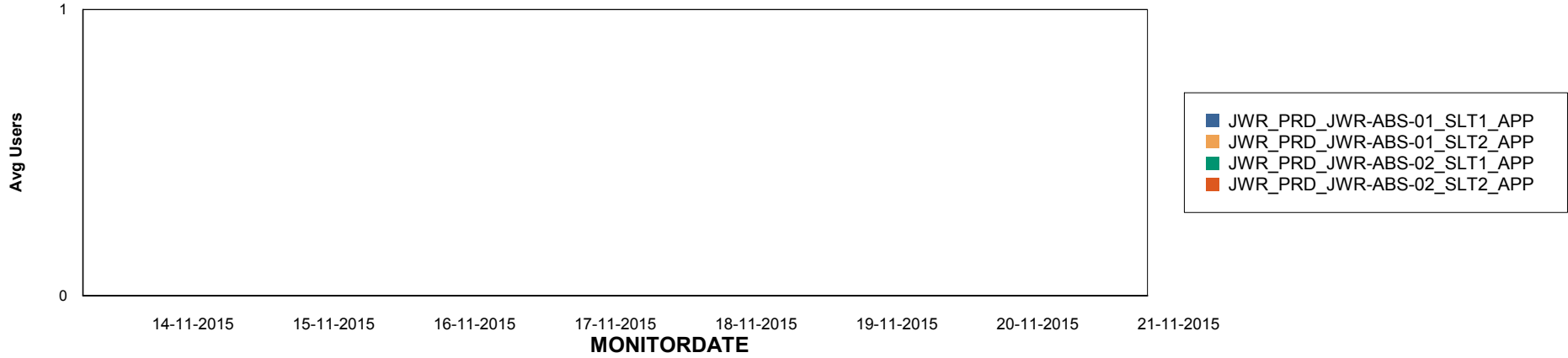
Weekly SLA Customer Report

Customer JWR Production
Database ID 43

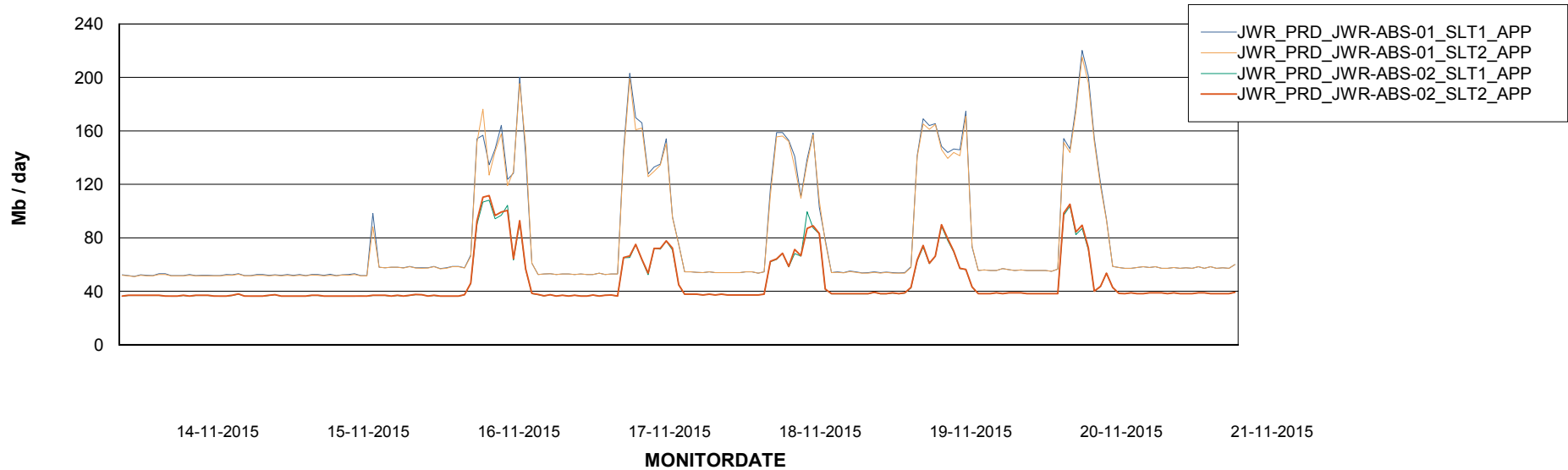


ABSolute Application Server Services

Disaster per ABS Server



Avg memory used per ABS Server Service



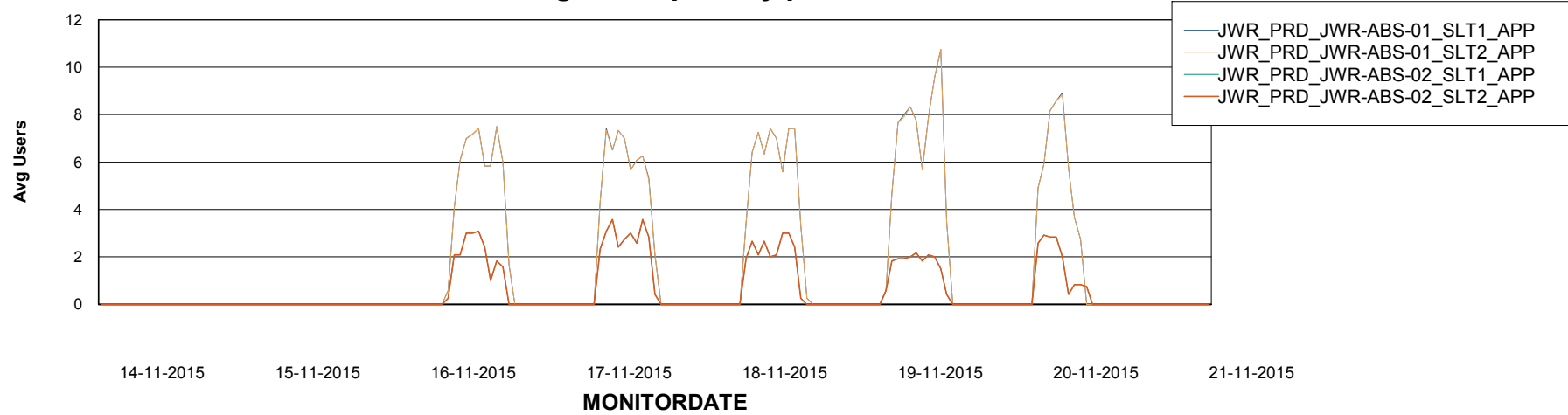
Weekly SLA Customer Report

Customer JWR Production
Database ID 43



=====
ABSolute Application Server Services
=====

Avg users per day per ABS server



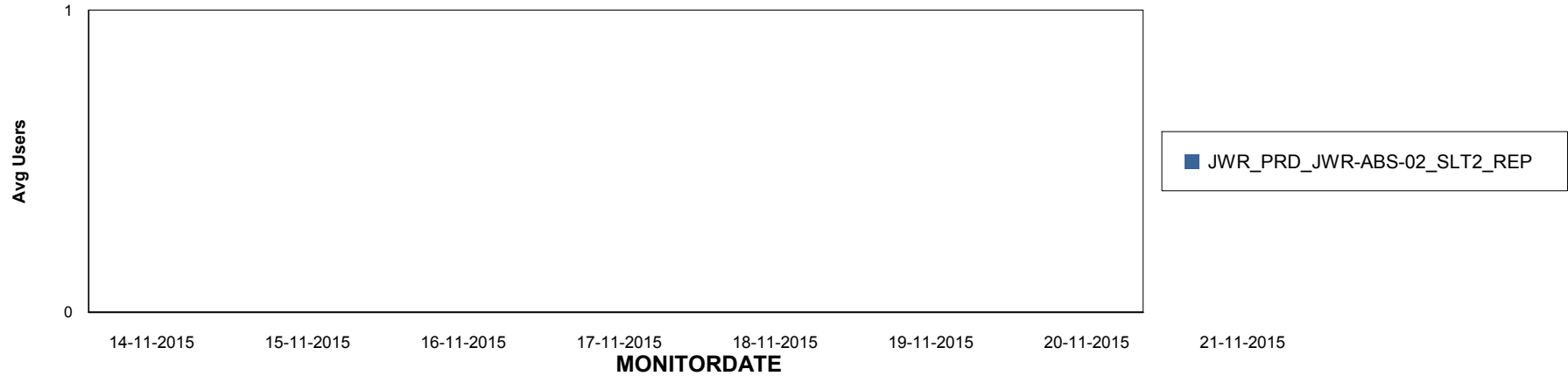
Weekly SLA Customer Report

Customer JWR Production
Database ID 43

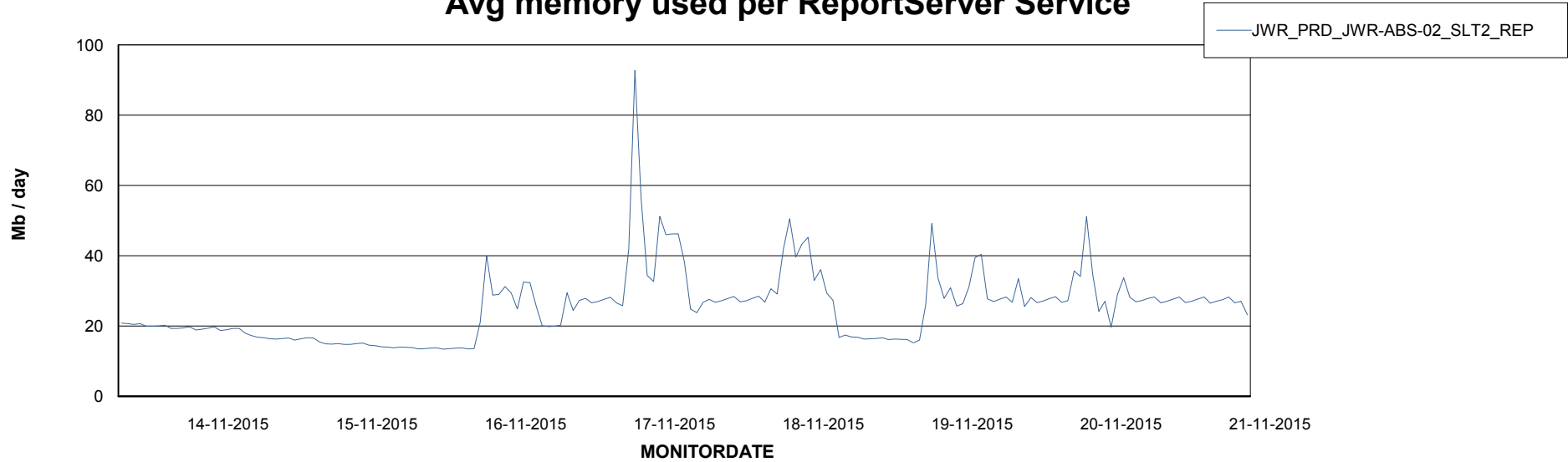


=====
ABSolute Application ReportServer Services
=====

Disaster per ReportServer



Avg memory used per ReportServer Service



Weekly SLA Customer Report

Customer JWR Production
Database ID 43



Disaster per ABS component

