

Weekly SLA Customer Report

Customer DFD Production
Database ID 39



=====
HARDDISK USAGE DFD_PRD_ABSWEB
=====

	Total disk space on C (GB)	Free disk space on C (GB)
21-11-2015	60	21
20-11-2015	60	21
19-11-2015	60	21
18-11-2015	60	21
17-11-2015	60	21
16-11-2015	60	21
15-11-2015	60	21

=====
HARDDISK USAGE DFD_PRD_BI1
=====

	Total disk space on C (GB)	Free disk space on C (GB)	Total disk space on E (GB)	Free disk space on E (GB)
21-11-2015	40	11	100	33
20-11-2015	40	11	100	33
19-11-2015	40	11	100	33
18-11-2015	40	11	100	33
17-11-2015	40	11	100	33
16-11-2015	40	11	100	33
15-11-2015	40	11	100	33

Weekly SLA Customer Report

Customer DFD Production
 Database ID 39



=====
 HARDDISK USAGE DFD_PRD_ORACLE1
 =====

	Total disk space on C (GB)	Free disk space on C (GB)	Total disk space on D (GB)	Free disk space on D (GB)	Total disk space on E (GB)	Free disk space on E (GB)	Total disk space on F (GB)	Free disk space on F (GB)
21-11-2015	78	49	479	356	400	252	800	723
20-11-2015	78	49	479	356	400	255	800	723
19-11-2015	78	49	479	356	400	259	800	723
18-11-2015	78	49	479	356	400	262	800	723
17-11-2015	78	49	479	356	400	266	800	723
16-11-2015	78	49	479	356	400	269	800	723
15-11-2015	78	49	479	356	400	271	800	723

=====
 HARDDISK USAGE DFD_PRD_ORACLE2
 =====

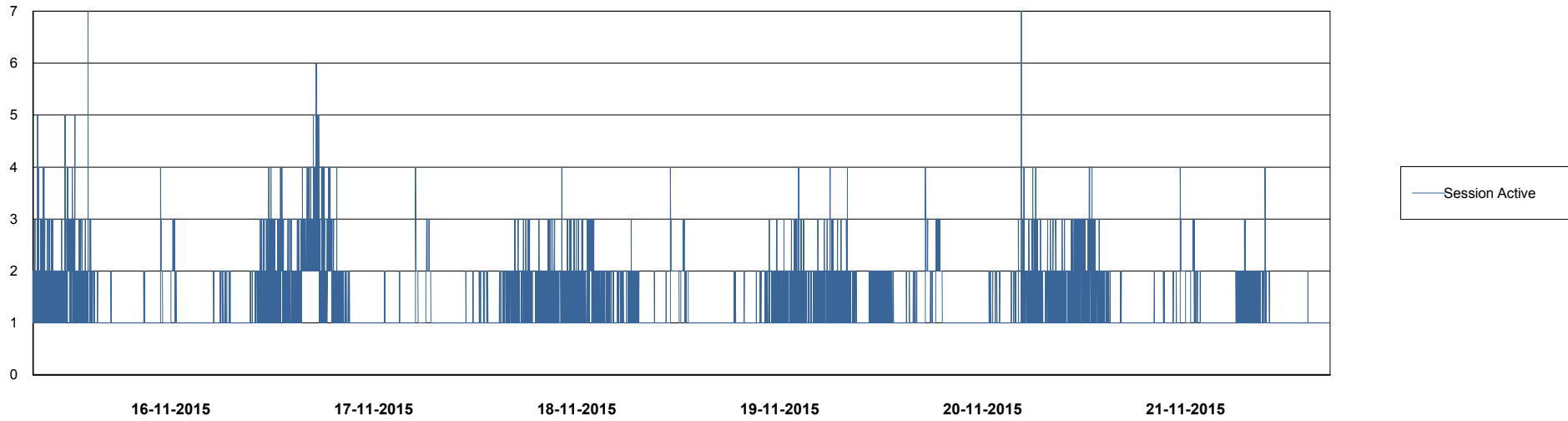
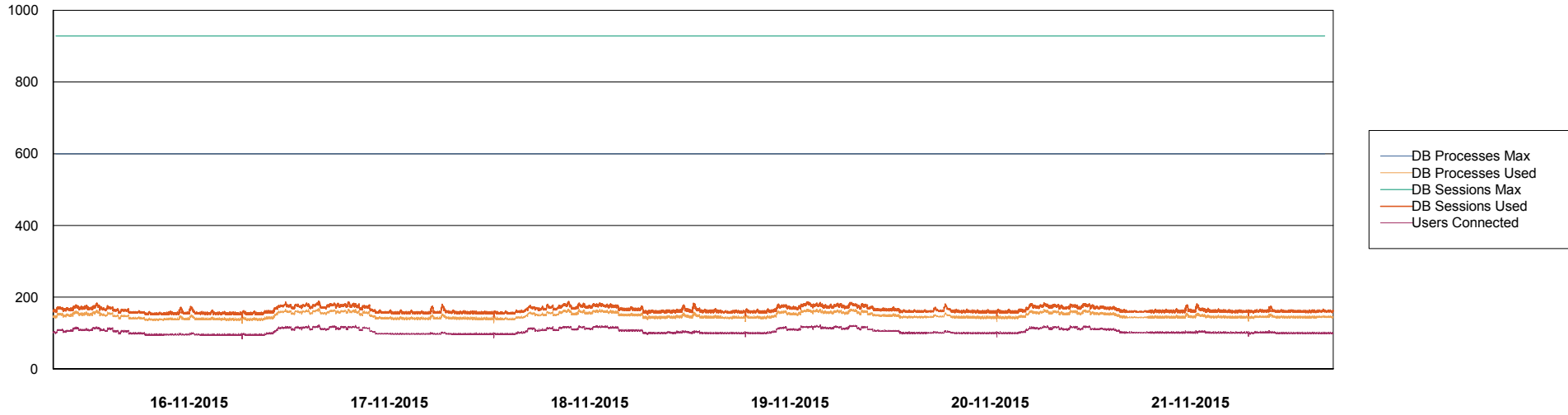
	Total disk space on C (GB)	Free disk space on C (GB)	Total disk space on D (GB)	Free disk space on D (GB)	Total disk space on E (GB)	Free disk space on E (GB)	Total disk space on F (GB)	Free disk space on F (GB)
21-11-2015	78	51	479	343	400	155	800	630
20-11-2015	78	51	479	343	400	157	800	630
19-11-2015	78	52	479	343	400	161	800	630
18-11-2015	78	52	479	343	400	164	800	630
17-11-2015	78	51	479	343	400	167	800	630
16-11-2015	78	51	479	343	400	171	800	630
15-11-2015	78	51	479	343	400	173	800	630

Weekly SLA Customer Report

Customer DFD Production
Database ID 39



DATABASE PERFORMANCE DFDDDB_Production

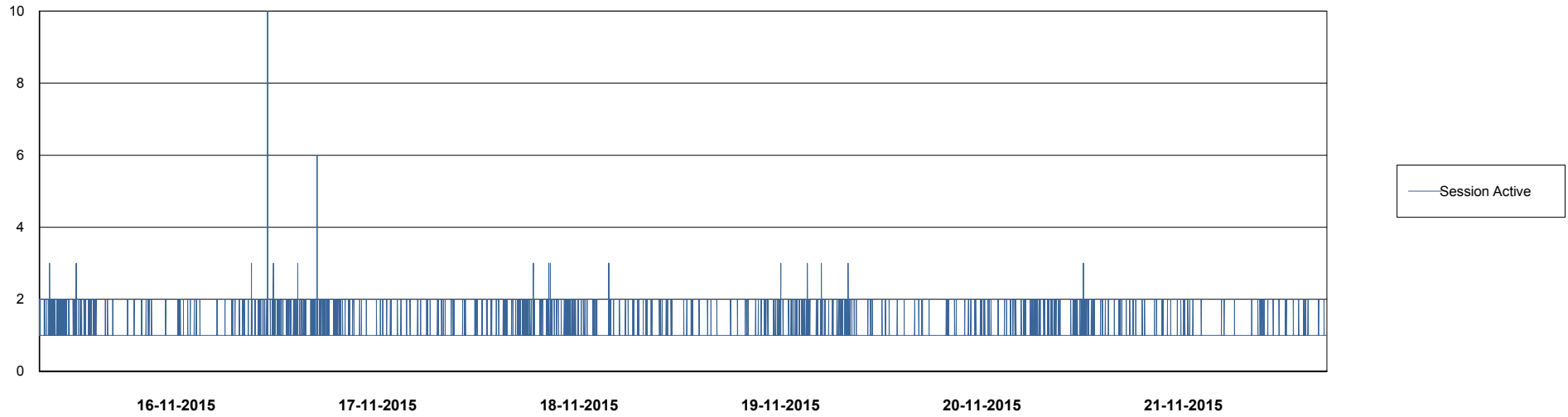
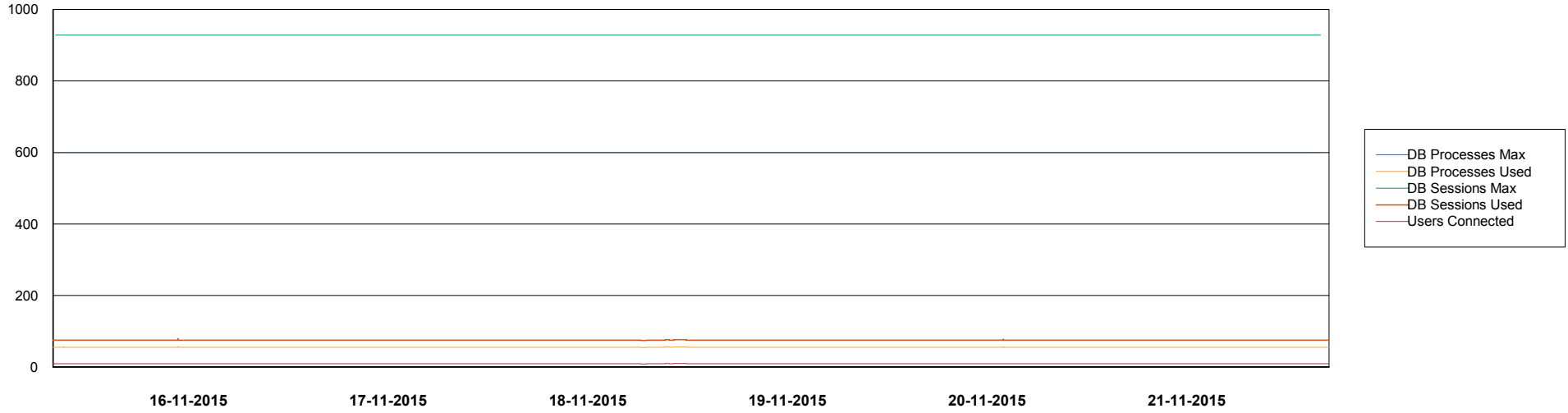


Weekly SLA Customer Report

Customer DFD Production
Database ID 39



DATABASE PERFORMANCE DFDDB_Standby

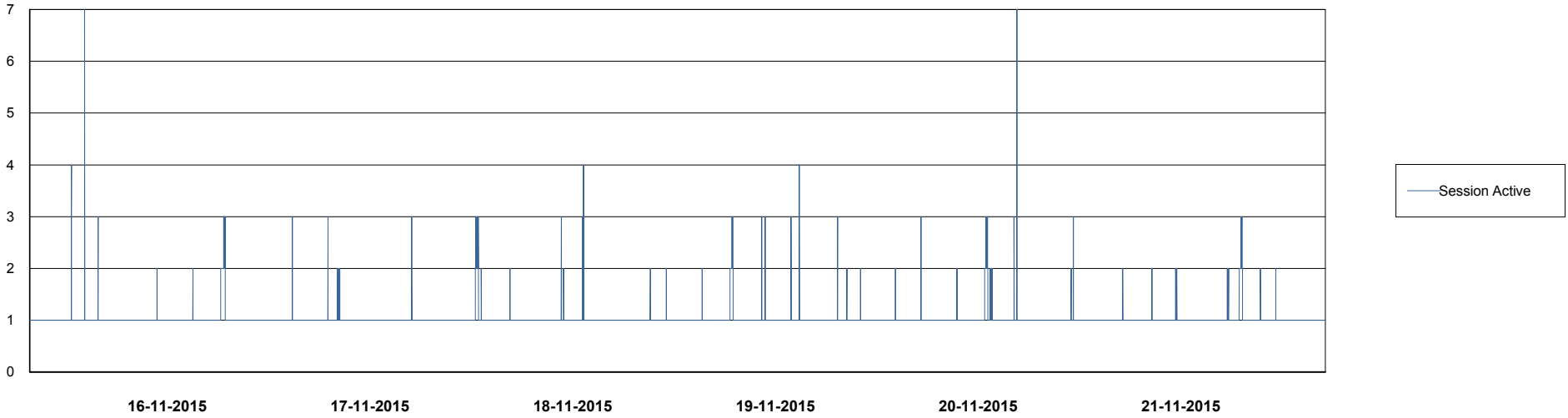
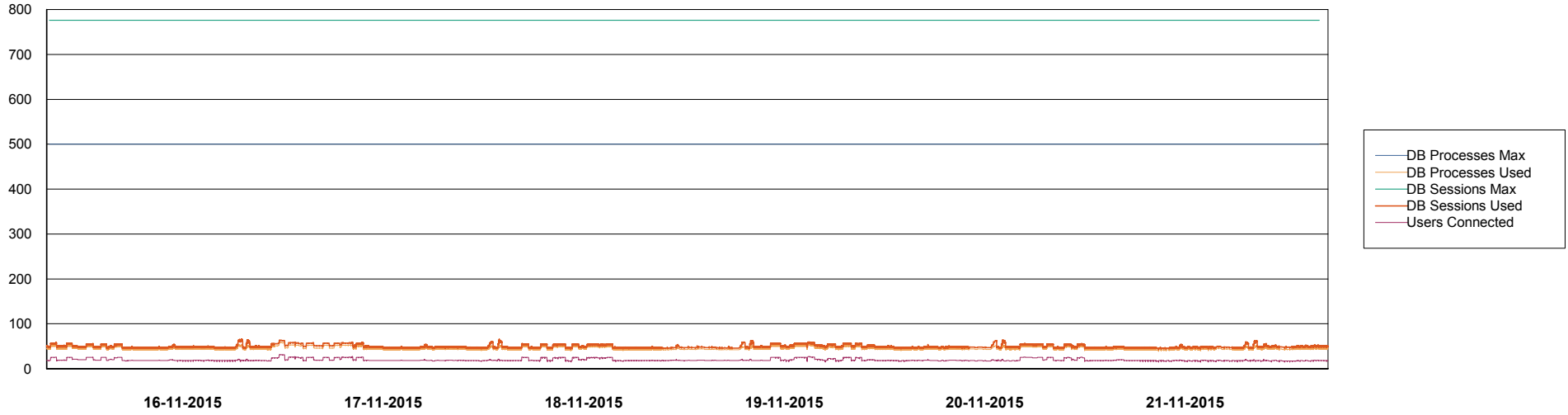


Weekly SLA Customer Report

Customer DFD Production
Database ID 39



DATABASE PERFORMANCE DFDDDBI_Production



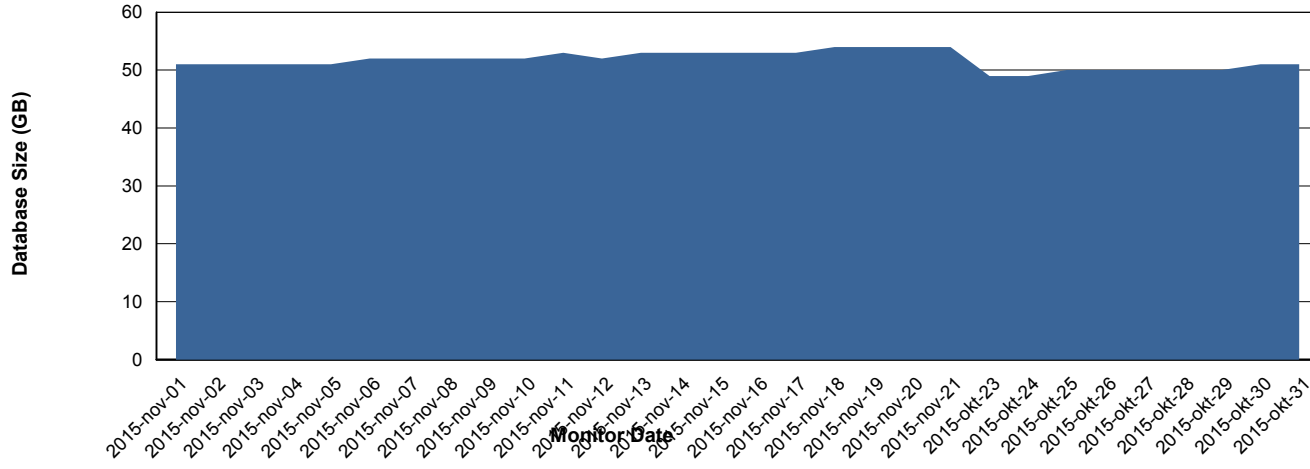
Weekly SLA Customer Report

Customer DFD Production
Database ID 39



=====
DATABASE SIZE DFDDDB_Production
=====

Database growth over last month



Weekly SLA Customer Report

Customer DFD Production
Database ID 39



=====
DATABASE TABLESPACES DFDDDB_Production
=====

TOTAL DATABASE SIZE PER TABLESPACE

Date	Tablespace Name	Filesize (Gb)	Usedsize (Gb)	Percentage free
21-11-2015	ABSDATA	21	17	19
	INDX	39	35	10
20-11-2015	ABSDATA	21	17	19
	INDX	39	35	10
19-11-2015	ABSDATA	21	17	19
	INDX	39	35	10
18-11-2015	ABSDATA	21	17	19
	INDX	39	35	10
17-11-2015	ABSDATA	21	17	19
	INDX	39	35	10
16-11-2015	ABSDATA	21	17	19
	INDX	39	34	13
15-11-2015	ABSDATA	21	17	19
	INDX	39	34	13

Weekly SLA Customer Report

Customer DFD Production
 Database ID 39



=====
 DATABASE TABLESPACES DFDDDBBI_Production
 =====

TOTAL DATABASE SIZE PER TABLESPACE

Date	Tablespace Name	Filesize (Gb)	Usedsize (Gb)	Percentage free
21-11-2015	ABSDATA	10	8	20
	INDX	20	10	50
20-11-2015	ABSDATA	10	8	20
	INDX	20	10	50
19-11-2015	ABSDATA	10	8	20
	INDX	20	10	50
18-11-2015	ABSDATA	10	7	30
	INDX	20	10	50
17-11-2015	ABSDATA	10	7	30
	INDX	20	10	50
16-11-2015	ABSDATA	10	7	30
	INDX	20	10	50
15-11-2015	ABSDATA	10	7	30
	INDX	20	10	50

=====
 STANDBY DATABASE HEALTH DFD Production
 =====

Recovery lag for last 7 days



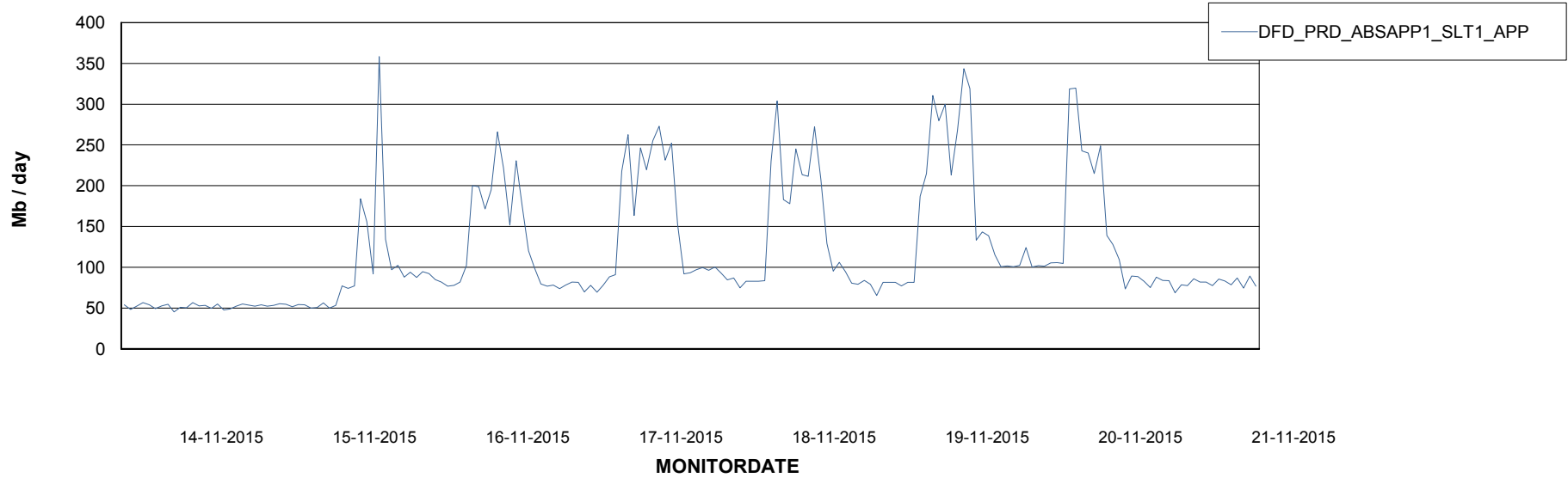
Weekly SLA Customer Report

Customer DFD Production
Database ID 39



=====
ABSolute Application Server Services
=====

Avg memory used per ABS Server Service



Weekly SLA Customer Report

Customer DFD Production
Database ID 39



=====
ABSolute Application ReportServer Services
=====

Avg memory used per ReportServer Service

