

Weekly SLA Customer Report

Customer BCH Production
 Database ID 28



=====
 HARDDISK USAGE BCH_PRD_ORCDB1
 =====

	Total disk space on C (GB)	Free disk space on C (GB)	Total disk space on D (GB)	Free disk space on D (GB)
21-11-2015	278	141	278	73
20-11-2015	278	142	278	70
19-11-2015	278	142	278	62
18-11-2015	278	141	278	65
17-11-2015	278	142	278	68
16-11-2015	278	142	278	71
15-11-2015	278	142	278	73

=====
 HARDDISK USAGE BCH_PRD_ORCDB2
 =====

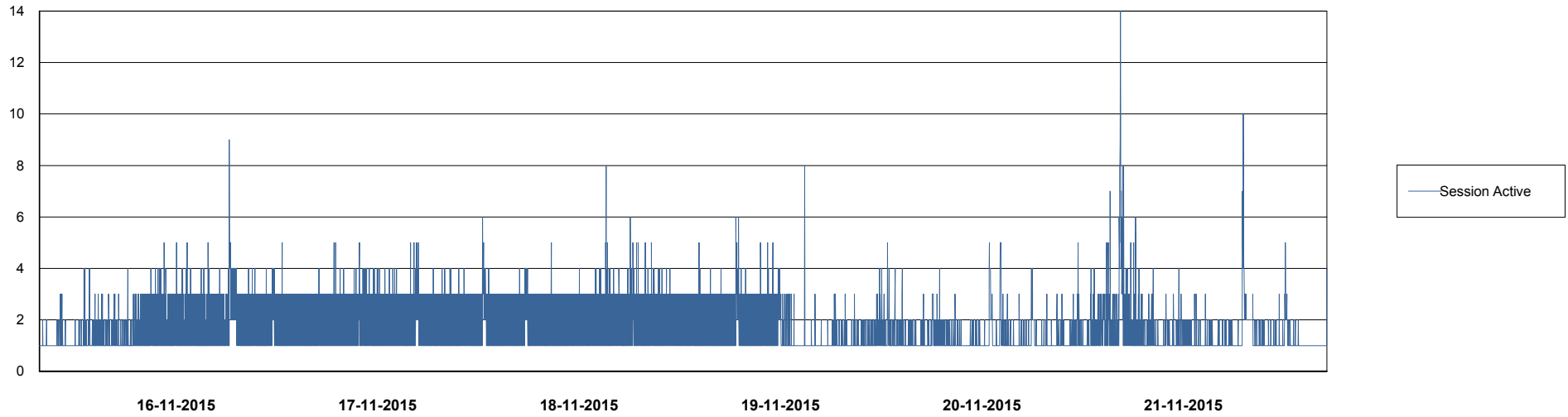
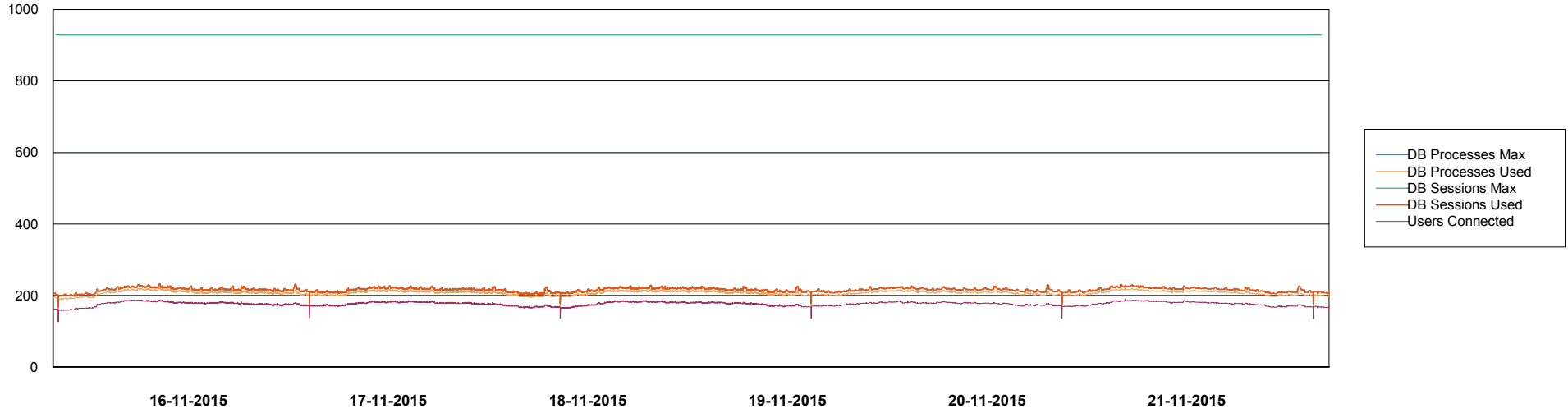
	Total disk space on C (GB)	Free disk space on C (GB)	Total disk space on D (GB)	Free disk space on D (GB)
21-11-2015	278	160	278	70
20-11-2015	278	160	278	66
19-11-2015	278	160	278	59
18-11-2015	278	160	278	62
17-11-2015	278	160	278	65
16-11-2015	278	160	278	68
15-11-2015	278	160	278	70

Weekly SLA Customer Report

Customer BCH Production
Database ID 28



DATABASE PERFORMANCE BCHDB_Production

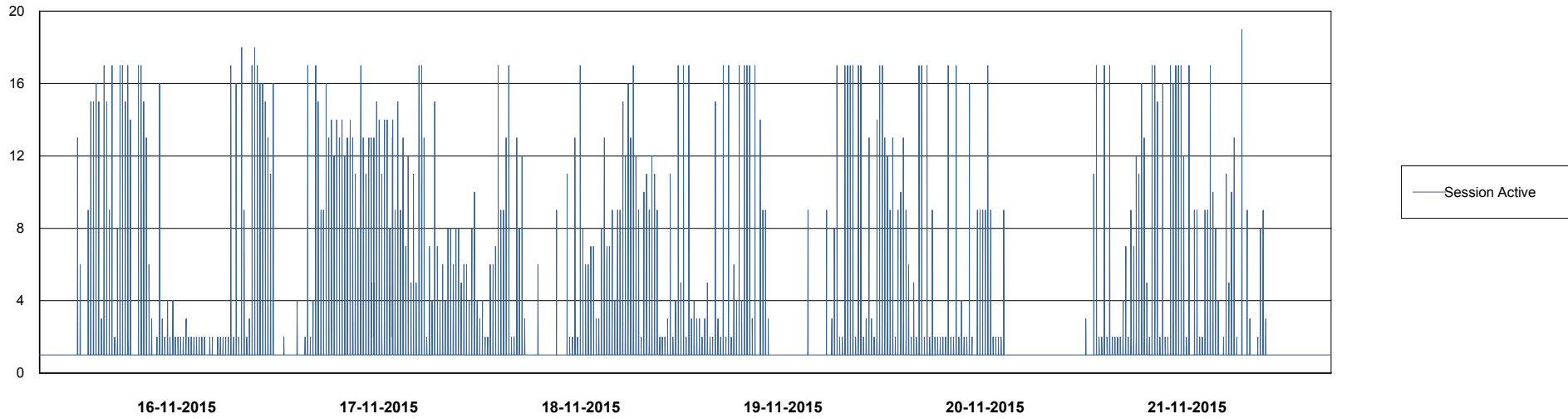
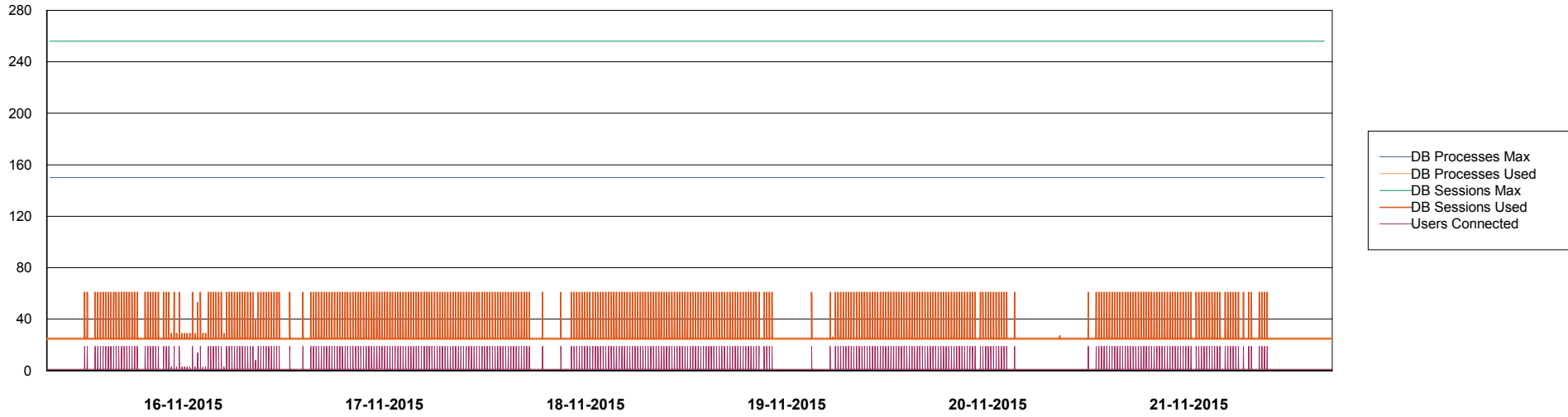


Weekly SLA Customer Report

Customer BCH Production
Database ID 28



DATABASE PERFORMANCE BCHDB_Standby



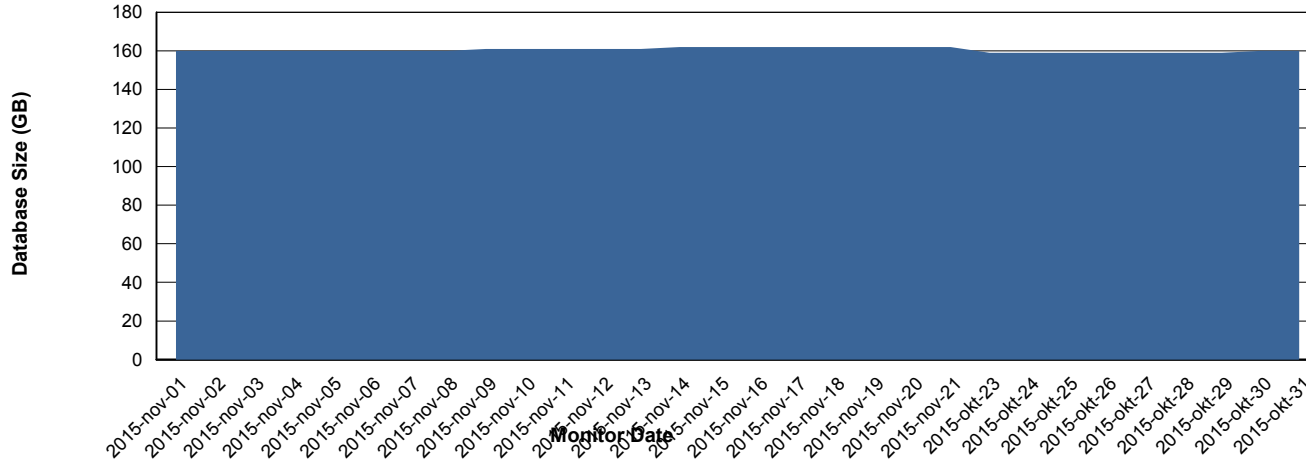
Weekly SLA Customer Report

Customer BCH Production
 Database ID 28



=====
 DATABASE SIZE BCHDB_Production
 =====

Database growth over last month



=====
 DATABASE TABLESPACES BCHDB_Production
 =====

TOTAL DATABASE SIZE PER TABLESPACE

Date	Tablespace Name	Filesize (Gb)	Usedsize (Gb)	Percentage free
21-11-2015	ABSDATA	42	30	29
	INDX	159	130	18
20-11-2015	ABSDATA	42	30	29
	INDX	159	130	18
19-11-2015	ABSDATA	42	30	29
	INDX	159	130	18
18-11-2015	ABSDATA	42	30	29
	INDX	159	130	18
17-11-2015	ABSDATA	42	30	29
	INDX	159	130	18
16-11-2015	ABSDATA	42	30	29
	INDX	159	130	18
15-11-2015	ABSDATA	42	30	29
	INDX	159	130	18

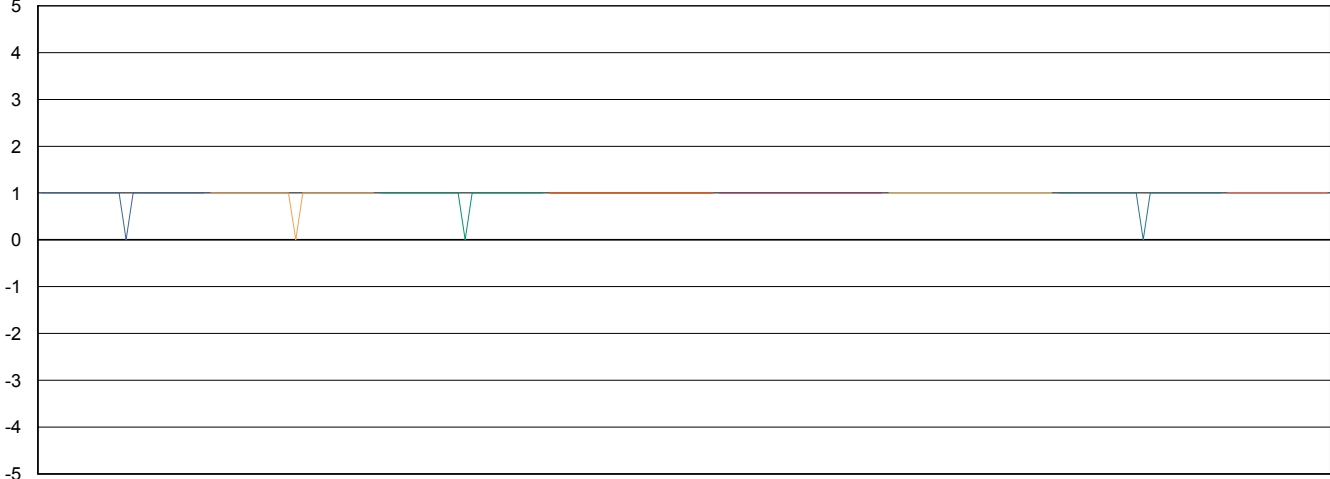
Weekly SLA Customer Report

Customer BCH Production
Database ID 28



=====
STANDBY DATABASE HEALTH BCH Production
=====

Recovery lag for last 7 days



- 14-11-2015
- 15-11-2015
- 16-11-2015
- 17-11-2015
- 18-11-2015
- 19-11-2015
- 20-11-2015
- 21-11-2015