

# Weekly SLA Customer Report

Customer NIX\_Production  
 Database ID 51



=====  
 HARDDISK USAGE NIX\_PRD\_ABSAPP1  
 =====

	Total disk space on C (GB)	Free disk space on C (GB)
14-11-2015	200	175
13-11-2015	200	175
12-11-2015	200	175
11-11-2015	200	175
10-11-2015	200	176
9-11-2015	200	176
8-11-2015	200	176

=====  
 HARDDISK USAGE NIX\_PRD\_ABSAPP2  
 =====

	Total disk space on C (GB)	Free disk space on C (GB)
14-11-2015	200	165
13-11-2015	200	165
12-11-2015	200	165
11-11-2015	200	165
10-11-2015	200	165
9-11-2015	200	165
8-11-2015	200	165

# Weekly SLA Customer Report

Customer      NIX\_Production  
 Database ID    51



=====  
 HARDDISK USAGE    NIX\_PRD\_ABSWEB01  
 =====

	Total disk space on C (GB)	Free disk space on C (GB)
14-11-2015	300	280
13-11-2015	300	280
12-11-2015	300	280
11-11-2015	300	280
10-11-2015	300	280
9-11-2015	300	280
8-11-2015	300	280

=====  
 HARDDISK USAGE    NIX\_PRD\_ORACLE\_B11  
 =====

	Total disk space on C (GB)	Free disk space on C (GB)	Total disk space on E (GB)	Free disk space on E (GB)	Total disk space on F (GB)	Free disk space on F (GB)	Total disk space on G (GB)	Free disk space on G (GB)
14-11-2015	279	203	558	386	558	457	279	233
13-11-2015	279	203	558	386	558	457	279	234
12-11-2015	279	203	558	387	558	457	279	234
11-11-2015	279	203	558	386	558	457	279	234
10-11-2015	279	203	558	386	558	457	279	234
9-11-2015	279	203	558	387	558	458	279	234
8-11-2015	279	203	558	387	558	458	279	234

## Weekly SLA Customer Report

Customer      NIX\_Production  
 Database ID    51



=====  
 HARDDISK USAGE    NIX\_PRD\_ORCDB1  
 =====

	Total disk space on C (GB)	Free disk space on C (GB)	Total disk space on E (GB)	Free disk space on E (GB)	Total disk space on F (GB)	Free disk space on F (GB)	Total disk space on G (GB)	Free disk space on G (GB)
14-11-2015	279	64	558	492	558	457	279	65
13-11-2015	279	64	558	492	558	457	279	67
12-11-2015	279	64	558	492	558	457	279	69
11-11-2015	279	64	558	492	558	457	279	71
10-11-2015	279	64	558	492	558	457	279	74
9-11-2015	279	64	558	492	558	457	279	76
8-11-2015	279	64	558	492	558	457	279	77

=====  
 HARDDISK USAGE    NIX\_PRD\_ORCDB2  
 =====

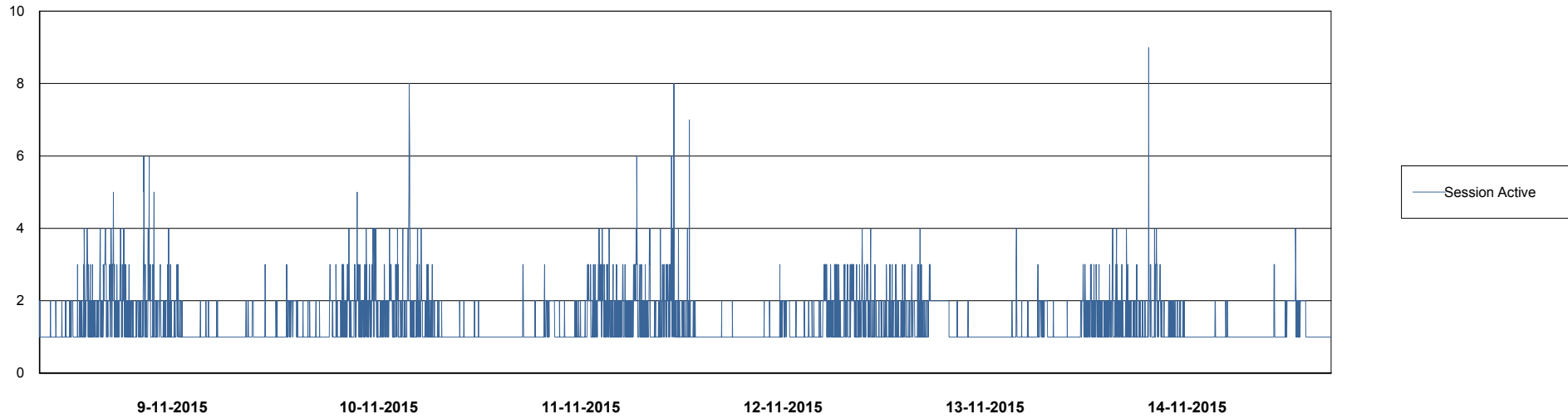
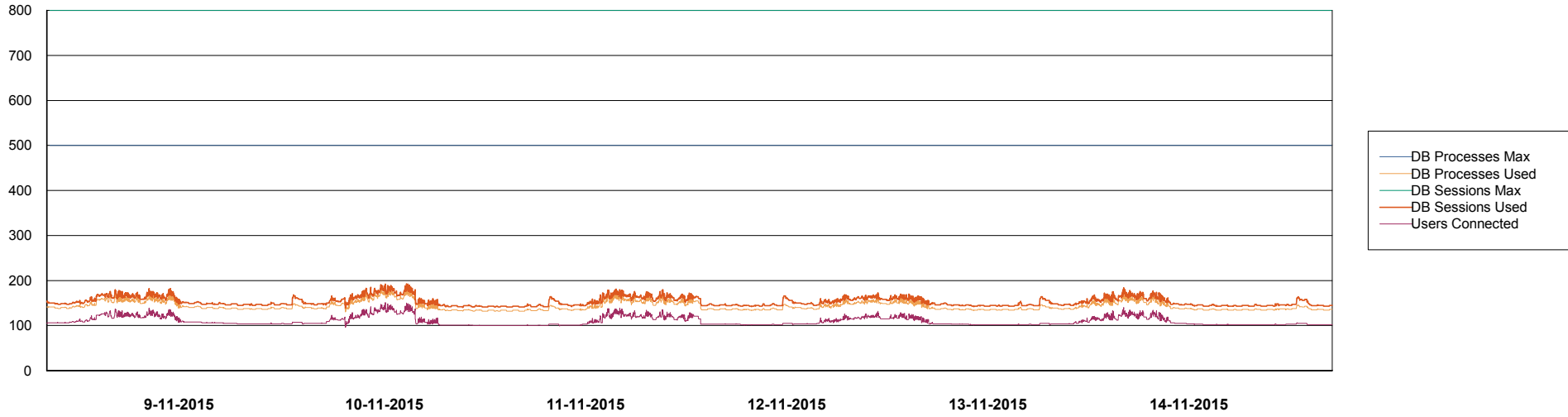
	Total disk space on C (GB)	Free disk space on C (GB)	Total disk space on E (GB)	Free disk space on E (GB)	Total disk space on F (GB)	Free disk space on F (GB)	Total disk space on G (GB)	Free disk space on G (GB)
14-11-2015	279	236	558	388	558	457	279	82
13-11-2015	279	236	558	388	558	457	279	84
12-11-2015	279	236	558	388	558	457	279	86
11-11-2015	279	236	558	389	558	457	279	88
10-11-2015	279	236	558	389	558	457	279	90
9-11-2015	279	236	558	389	558	457	279	92
8-11-2015	279	236	558	389	558	457	279	93

# Weekly SLA Customer Report

Customer NIX\_Production  
Database ID 51



DATABASE PERFORMANCE NIXDB\_Production



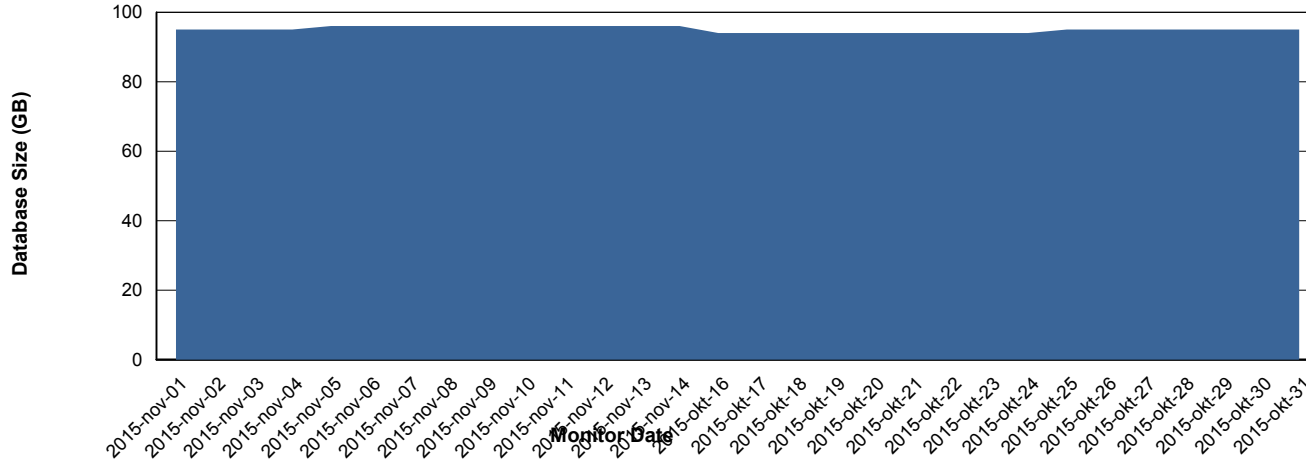
# Weekly SLA Customer Report

Customer NIX\_Production  
 Database ID 51



=====  
 DATABASE SIZE NIXDB\_Production  
 =====

## Database growth over last month



=====  
 DATABASE TABLESPACES NIXDB\_Production  
 =====

### TOTAL DATABASE SIZE PER TABLESPACE

Date	Tablespace Name	Filesize (Gb)	Usedsize (Gb)	Percentage free
14-11-2015	ABSDATA	50	36	28
	INDX	100	59	41
13-11-2015	ABSDATA	50	36	28
	INDX	100	59	41
12-11-2015	ABSDATA	50	36	28
	INDX	100	59	41
11-11-2015	ABSDATA	50	36	28
	INDX	100	59	41
10-11-2015	ABSDATA	50	36	28
	INDX	100	59	41
9-11-2015	ABSDATA	50	36	28
	INDX	100	59	41
8-11-2015	ABSDATA	50	36	28
	INDX	100	59	41

# Weekly SLA Customer Report

---

Customer NIX\_Production  
Database ID 51



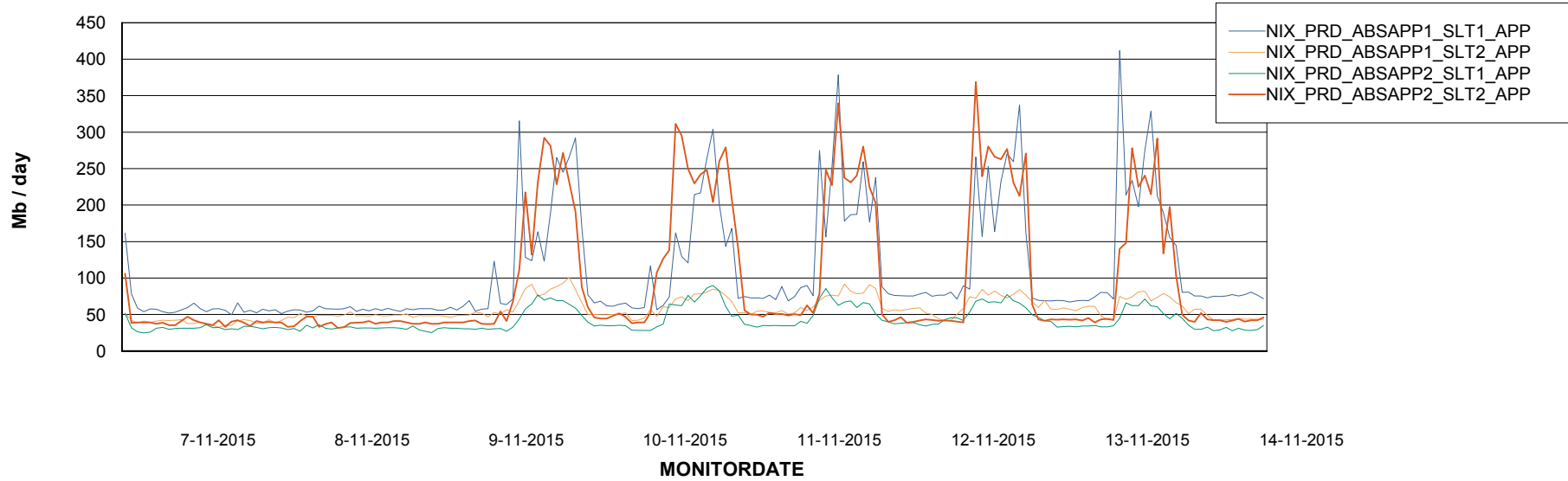
# Weekly SLA Customer Report

Customer NIX\_Production  
Database ID 51



=====  
ABSolute Application Server Services  
=====

## Avg memory used per ABS Server Service



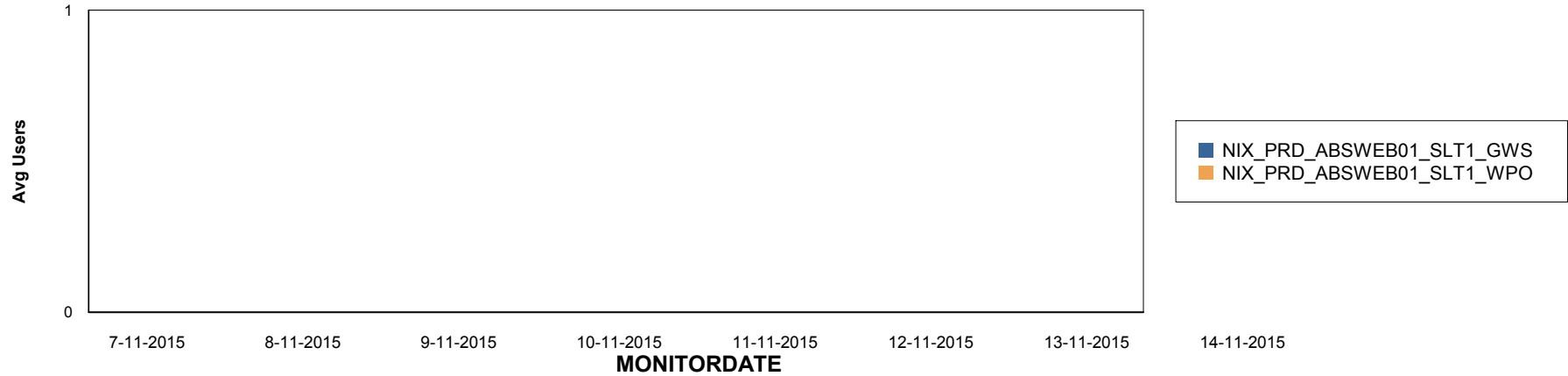
# Weekly SLA Customer Report

Customer NIX\_Production  
Database ID 51

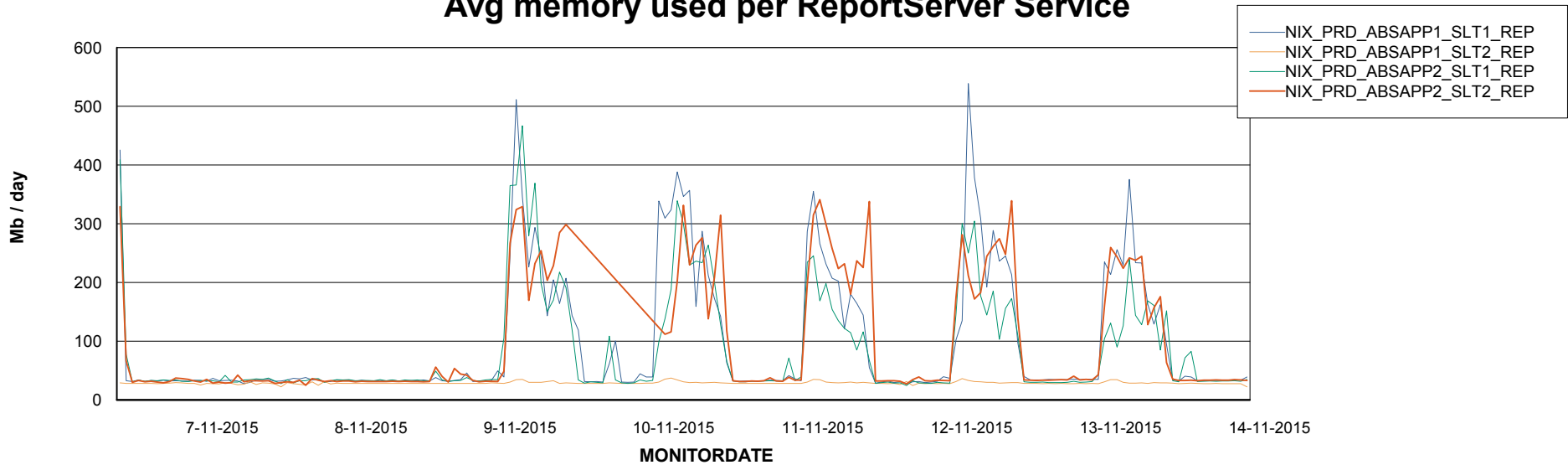


=====  
ABSolute Application ReportServer Services  
=====

## Disaster per ReportServer



## Avg memory used per ReportServer Service



# Weekly SLA Customer Report

Customer NIX\_Production  
Database ID 51



## Disaster per ABS component

