

## Weekly SLA Customer Report

Customer      CIW Production  
 Database ID    45



=====  
 HARDDISK USAGE    CIW\_PRD\_ORACLE1  
 =====

	Total disk space on C (GB)	Free disk space on C (GB)	Total disk space on D (GB)	Free disk space on D (GB)	Total disk space on E (GB)	Free disk space on E (GB)	Total disk space on F (GB)	Free disk space on F (GB)	Total disk space on I (GB)
14-11-2015	276	140	279	185	279	246	0	0	0
11-11-2015	276	140	279	185	279	247	0	0	0
10-11-2015	276	139	279	185	279	248	7	3	0
9-11-2015	276	136	279	185	279	248	0	0	0
8-11-2015	276	136	279	185	279	249	0	0	0

=====  
 HARDDISK USAGE    CIW\_PRD\_ORACLE2  
 =====

	Total disk space on C (GB)	Free disk space on C (GB)	Total disk space on D (GB)	Free disk space on D (GB)	Total disk space on E (GB)	Free disk space on E (GB)	Total disk space on F (GB)	Free disk space on F (GB)
14-11-2015	555	361	558	547	558	483	0	0
11-11-2015	555	361	558	547	558	485	0	0
10-11-2015	555	361	558	547	558	485	7	3
9-11-2015	555	373	558	547	558	485	0	0
8-11-2015	555	373	558	547	558	486	0	0

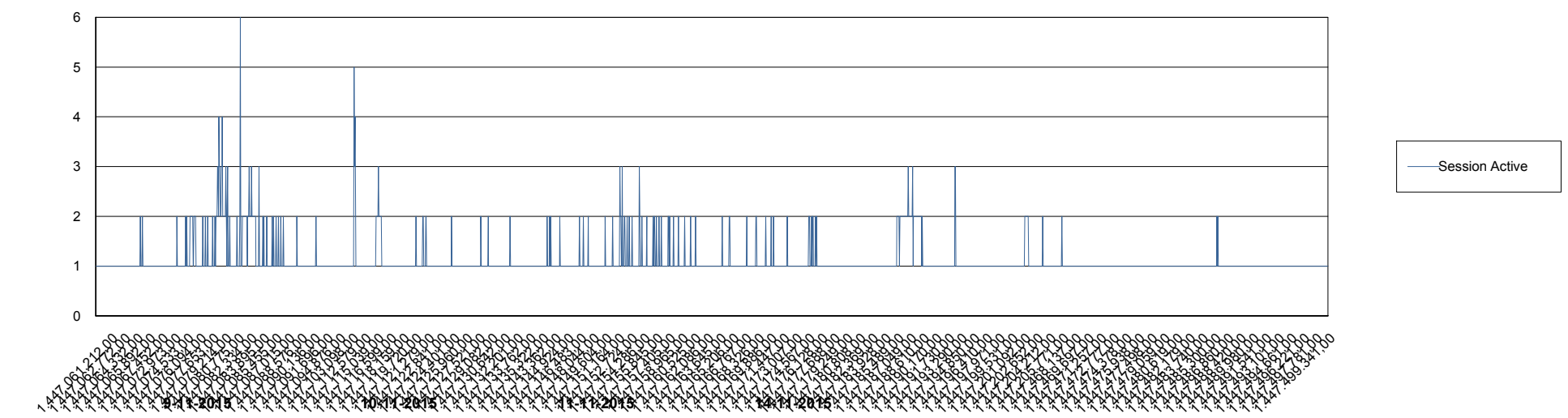
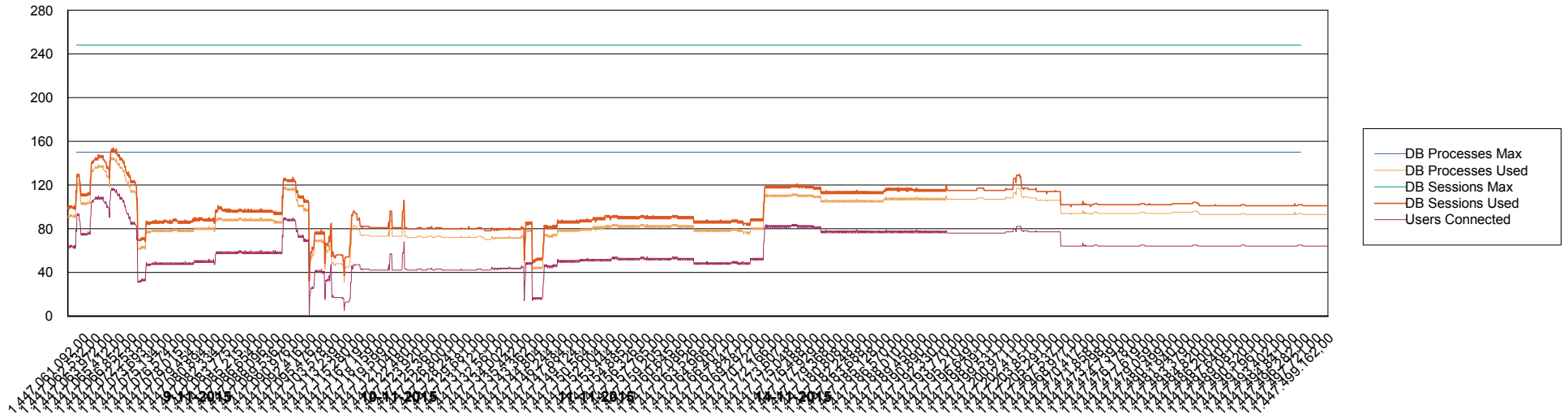
# Weekly SLA Customer Report

Customer CIW Production  
Database ID 45



## DATABASE PERFORMANCE

CIWDB\_Production



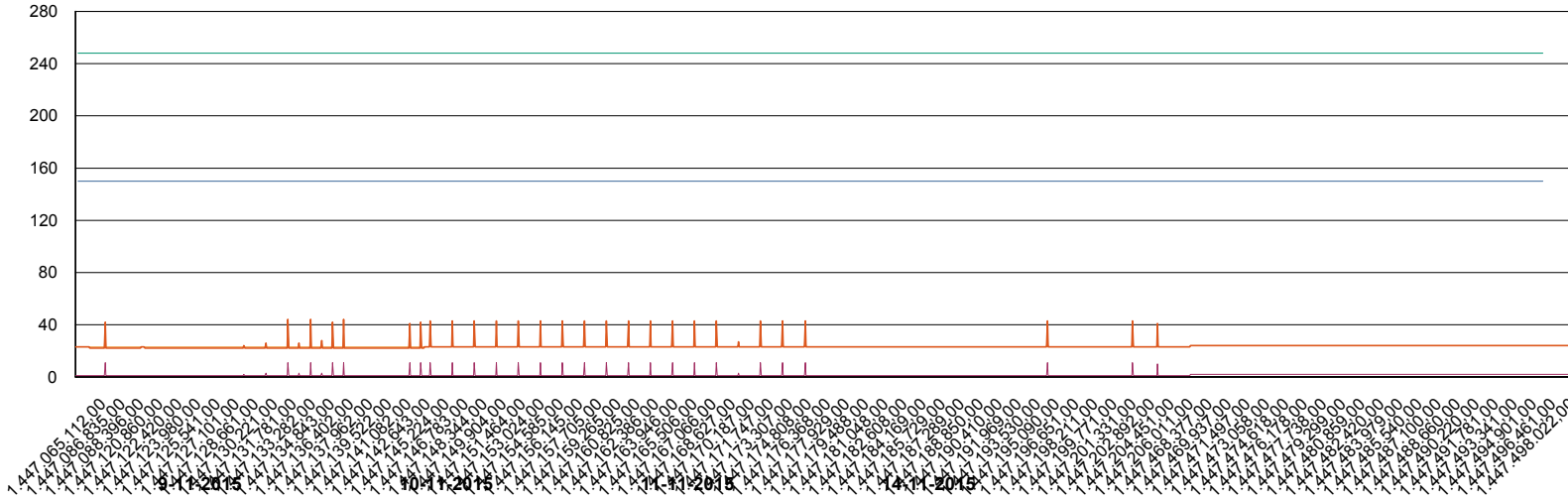
# Weekly SLA Customer Report

Customer CIW Production  
Database ID 45

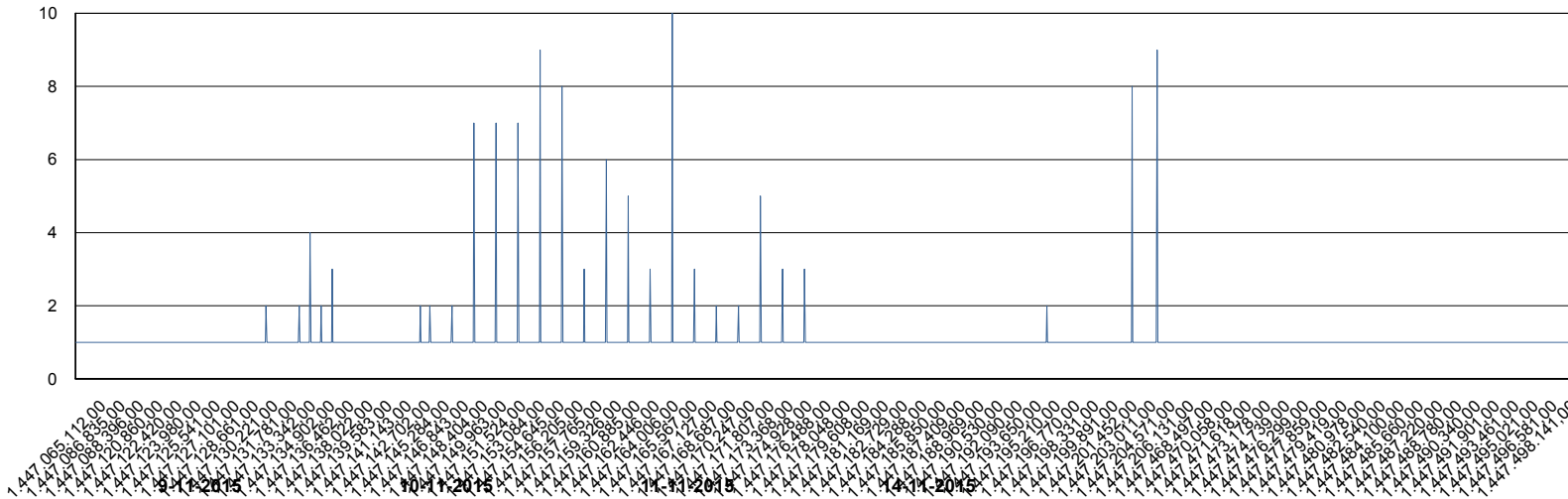


## DATABASE PERFORMANCE

CIWDB\_Standby



- DB Processes Max
- DB Processes Used
- DB Sessions Max
- DB Sessions Used
- Users Connected



- Session Active

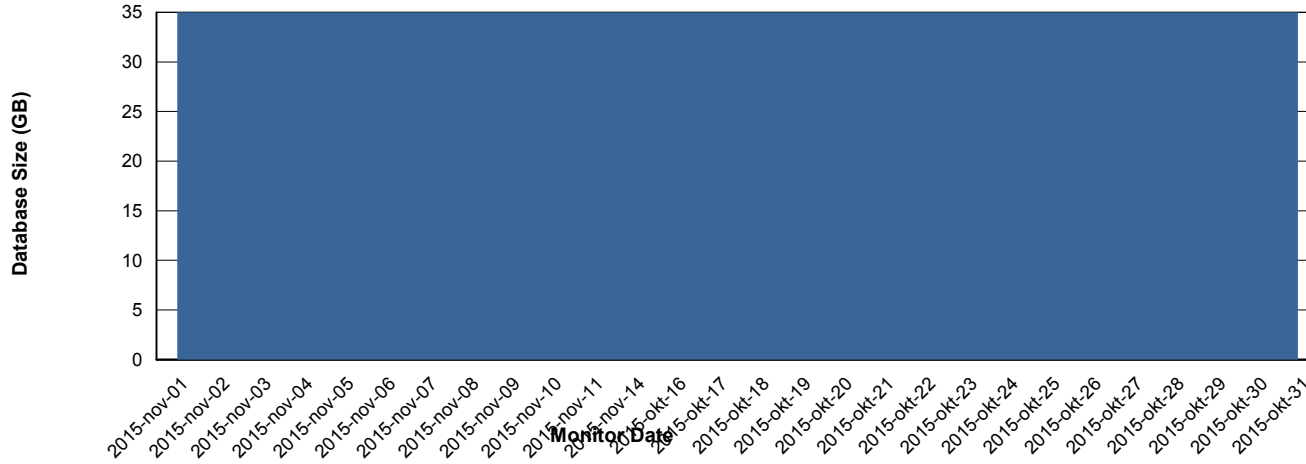
# Weekly SLA Customer Report

Customer CIW Production  
 Database ID 45



=====  
 DATABASE SIZE CIWDB\_Production  
 =====

## Database growth over last month



=====  
 DATABASE TABLESPACES CIWDB\_Production  
 =====

### TOTAL DATABASE SIZE PER TABLESPACE

Date	Tablespace Name	Filesize (Gb)	Usedsize (Gb)	Percentage free
14-11-2015	ABSDATA	38	31	18
	INDX	4	3	25
11-11-2015	ABSDATA	38	31	18
	INDX	4	3	25
10-11-2015	ABSDATA	38	31	18
	INDX	4	3	25
9-11-2015	ABSDATA	38	31	18
	INDX	4	3	25
8-11-2015	ABSDATA	38	31	18
	INDX	4	3	25

