

Weekly SLA Customer Report

Customer NIX_Production
 Database ID 51



=====
 HARDDISK USAGE NIX_PRD_ABSAPP1
 =====

	Total disk space on C (GB)	Free disk space on C (GB)
7-11-2015	200	176
6-11-2015	200	176
5-11-2015	200	176
4-11-2015	200	176
3-11-2015	200	176
2-11-2015	200	176
1-11-2015	200	176

=====
 HARDDISK USAGE NIX_PRD_ABSAPP2
 =====

	Total disk space on C (GB)	Free disk space on C (GB)
7-11-2015	200	165
6-11-2015	200	165
5-11-2015	200	165
4-11-2015	200	165
3-11-2015	200	166
2-11-2015	200	167
1-11-2015	200	167

Weekly SLA Customer Report

Customer NIX_Production
 Database ID 51



=====
 HARDDISK USAGE NIX_PRD_ABSWEB01
 =====

	Total disk space on C (GB)	Free disk space on C (GB)
7-11-2015	300	280
6-11-2015	300	280
5-11-2015	300	280
4-11-2015	300	280
3-11-2015	300	281
2-11-2015	300	281
1-11-2015	300	281

=====
 HARDDISK USAGE NIX_PRD_ORACLE_B11
 =====

	Total disk space on C (GB)	Free disk space on C (GB)	Total disk space on E (GB)	Free disk space on E (GB)	Total disk space on F (GB)	Free disk space on F (GB)	Total disk space on G (GB)	Free disk space on G (GB)
7-11-2015	279	203	558	386	558	457	279	234
6-11-2015	279	203	558	386	558	457	279	234
5-11-2015	279	203	558	387	558	458	279	234
4-11-2015	279	203	558	387	558	458	279	234
3-11-2015	279	203	558	387	558	458	279	234
2-11-2015	279	203	558	387	558	458	279	234
1-11-2015	279	203	558	387	558	458	279	234

Weekly SLA Customer Report

Customer NIX_Production
 Database ID 51



=====
 HARDDISK USAGE NIX_PRD_ORCDB1
 =====

	Total disk space on C (GB)	Free disk space on C (GB)	Total disk space on E (GB)	Free disk space on E (GB)	Total disk space on F (GB)	Free disk space on F (GB)	Total disk space on G (GB)	Free disk space on G (GB)
7-11-2015	279	64	558	492	558	457	279	79
6-11-2015	279	64	558	492	558	457	279	81
5-11-2015	279	64	558	492	558	457	279	83
4-11-2015	279	64	558	492	558	457	279	85
3-11-2015	279	64	558	491	558	456	279	87
2-11-2015	279	64	558	487	558	452	279	90
1-11-2015	279	78	558	489	558	454	279	91

=====
 HARDDISK USAGE NIX_PRD_ORCDB2
 =====

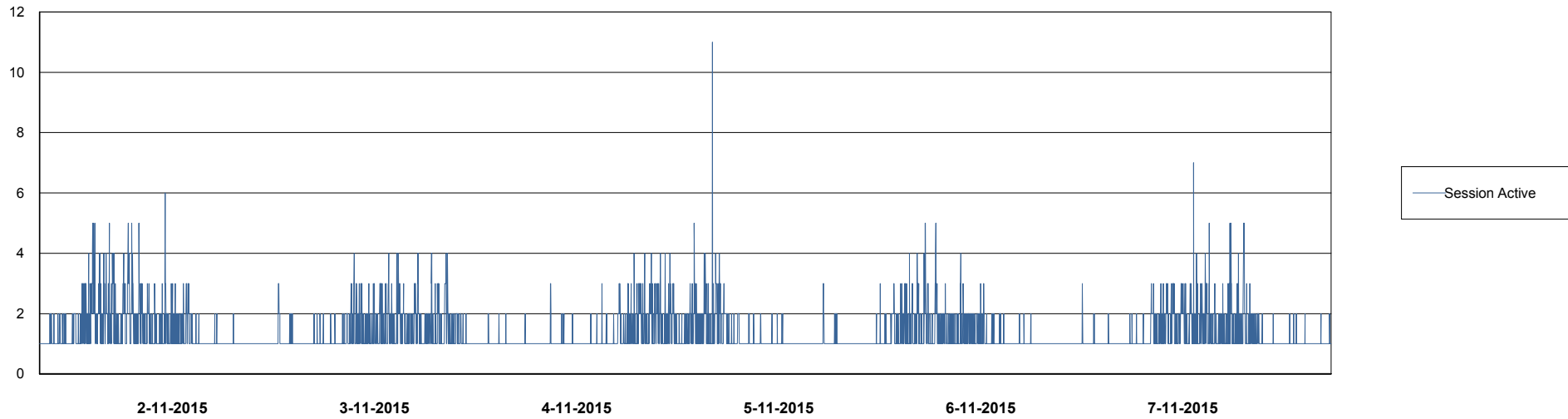
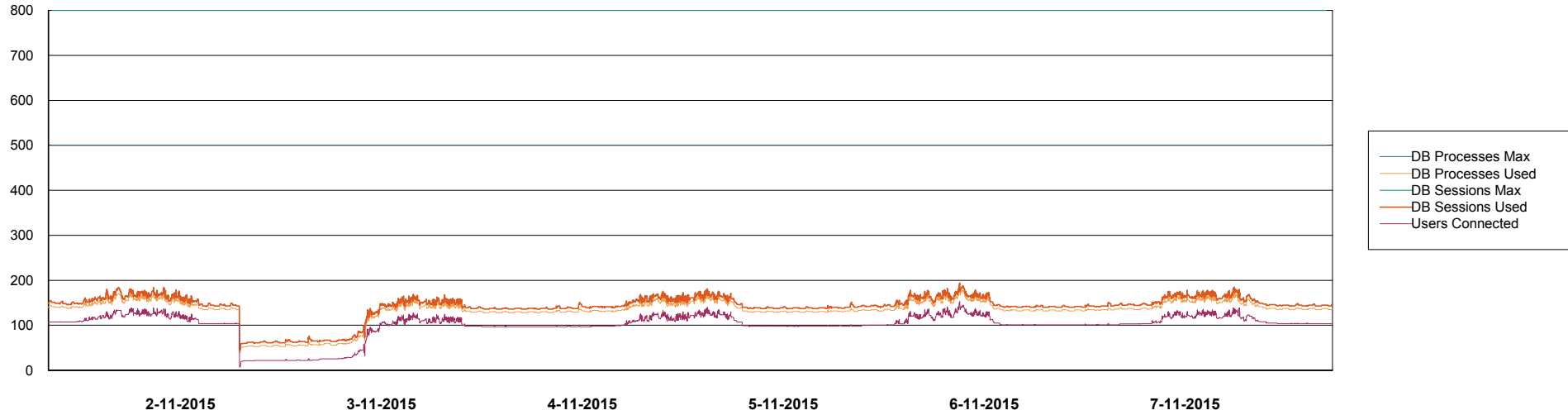
	Total disk space on C (GB)	Free disk space on C (GB)	Total disk space on E (GB)	Free disk space on E (GB)	Total disk space on F (GB)	Free disk space on F (GB)	Total disk space on G (GB)	Free disk space on G (GB)
7-11-2015	279	236	558	389	558	457	279	96
6-11-2015	279	236	558	389	558	457	279	97
5-11-2015	279	236	558	389	558	457	279	100
4-11-2015	279	236	558	389	558	457	279	102
3-11-2015	279	236	558	390	558	457	279	104
2-11-2015	279	236	558	390	558	457	279	107
1-11-2015	279	236	558	390	558	457	279	108

Weekly SLA Customer Report

Customer NIX_Production
Database ID 51



DATABASE PERFORMANCE NIXDB_Production



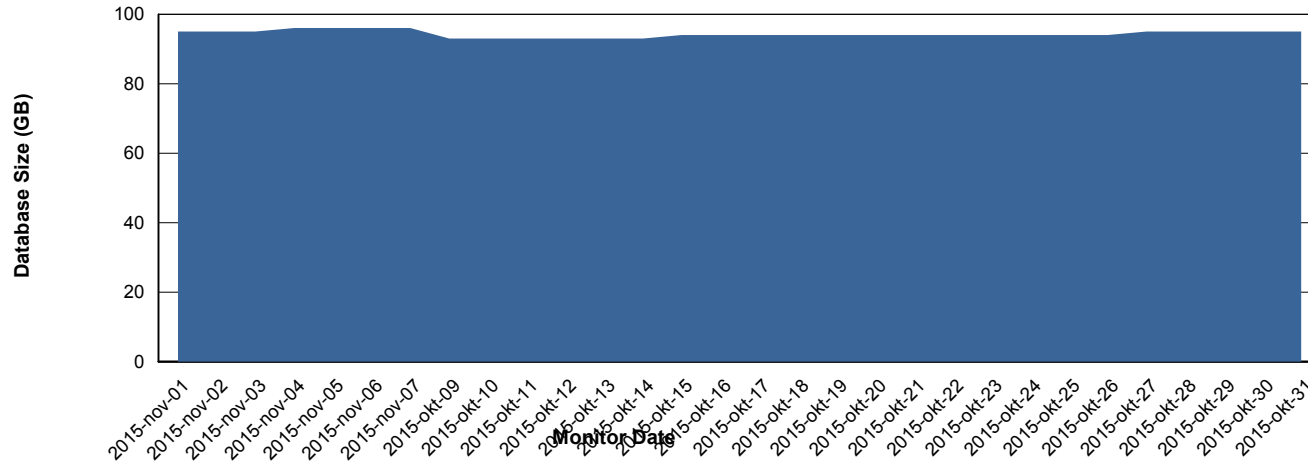
Weekly SLA Customer Report

Customer NIX_Production
 Database ID 51



=====
 DATABASE SIZE NIXDB_Production
 =====

Database growth over last month



=====
 DATABASE TABLESPACES NIXDB_Production
 =====

TOTAL DATABASE SIZE PER TABLESPACE

Date	Tablespace Name	Filesize (Gb)	Usedsize (Gb)	Percentage free
7-11-2015	ABSDATA	50	36	28
	INDX	100	58	42
6-11-2015	ABSDATA	50	36	28
	INDX	100	58	42
5-11-2015	ABSDATA	50	36	28
	INDX	100	58	42
4-11-2015	ABSDATA	50	36	28
	INDX	100	58	42
3-11-2015	ABSDATA	50	36	28
	INDX	100	58	42
2-11-2015	ABSDATA	50	36	28
	INDX	100	58	42
1-11-2015	ABSDATA	50	36	28
	INDX	100	58	42

Weekly SLA Customer Report

Customer NIX_Production
Database ID 51



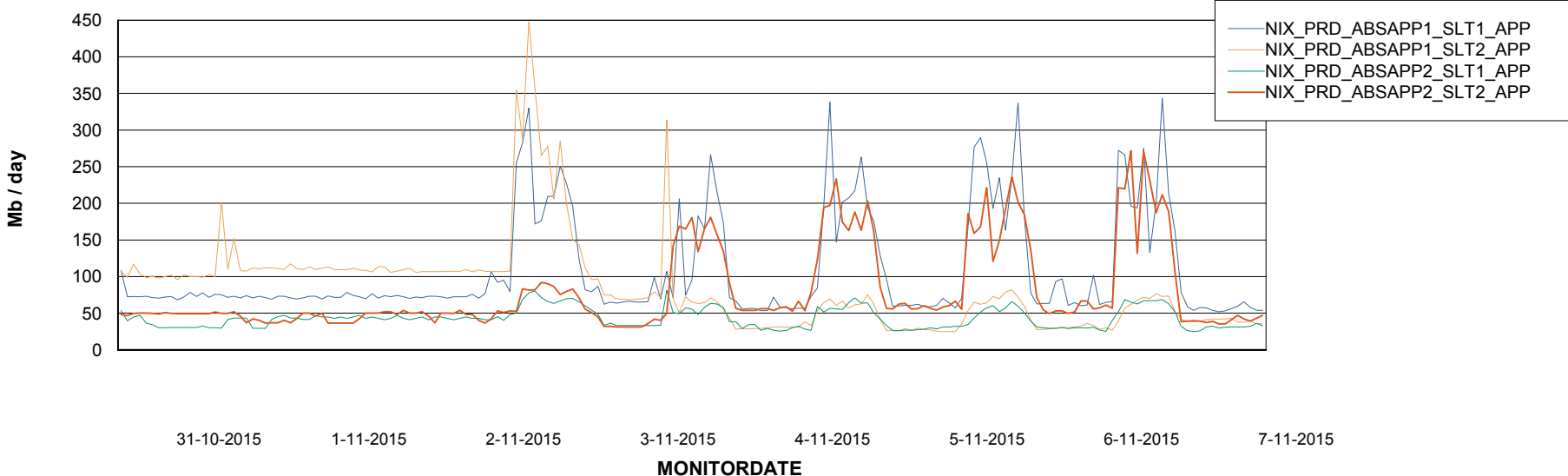
Weekly SLA Customer Report

Customer NIX_Production
Database ID 51



=====
ABSolute Application Server Services
=====

Avg memory used per ABS Server Service



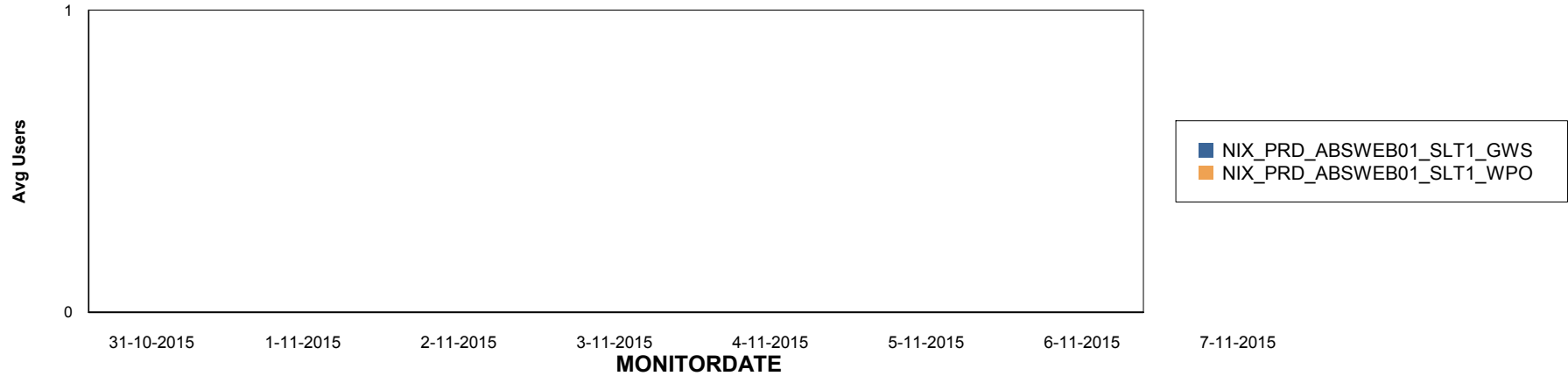
Weekly SLA Customer Report

Customer NIX_Production
Database ID 51

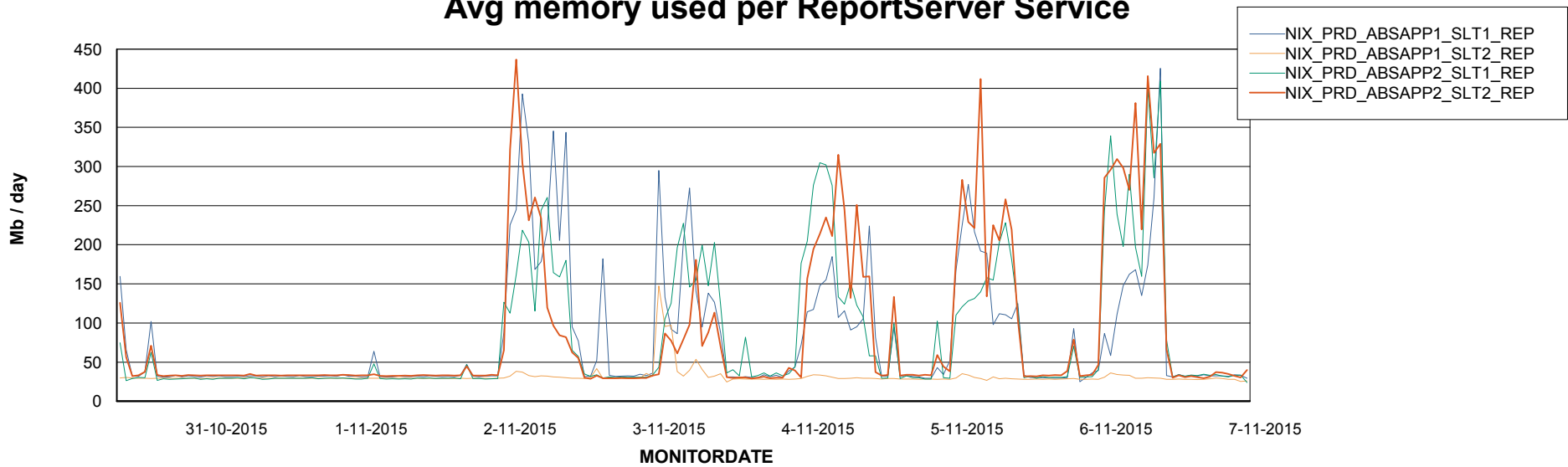


=====
ABSolute Application ReportServer Services
=====

Disaster per ReportServer



Avg memory used per ReportServer Service



Weekly SLA Customer Report

Customer NIX_Production
Database ID 51



Disaster per ABS component

