

Weekly SLA Customer Report

Customer JWR Production
 Database ID 43



=====
 HARDDISK USAGE JWR_PRD_JWR-ABS-01
 =====

	Used disk space on / (GB)	Total disk space on / (GB)	Free disk space on / (GB)
7-11-2015	29	49	18
6-11-2015	29	49	18
5-11-2015	29	49	18
4-11-2015	31	49	15
3-11-2015	32	49	15
2-11-2015	32	49	15
1-11-2015	32	49	15

=====
 HARDDISK USAGE JWR_PRD_JWR-ABS-02
 =====

	Used disk space on / (GB)	Total disk space on / (GB)	Free disk space on / (GB)
7-11-2015	34	49	12
6-11-2015	34	49	12
5-11-2015	34	49	12
4-11-2015	34	49	12
3-11-2015	34	49	12
2-11-2015	34	49	12
1-11-2015	34	49	12

Weekly SLA Customer Report

Customer JWR Production
 Database ID 43



=====

HARDDISK USAGE JWR_PRD_JWR-ODB-01

=====

	Used disk space on / (GB)	Total disk space on / (GB)	Free disk space on / (GB)
7-11-2015	97	148	43
6-11-2015	98	148	43
5-11-2015	98	148	43
4-11-2015	98	148	43
3-11-2015	98	148	43
2-11-2015	98	148	43
1-11-2015	97	148	44

=====

HARDDISK USAGE JWR_PRD_JWR-ODB-02

=====

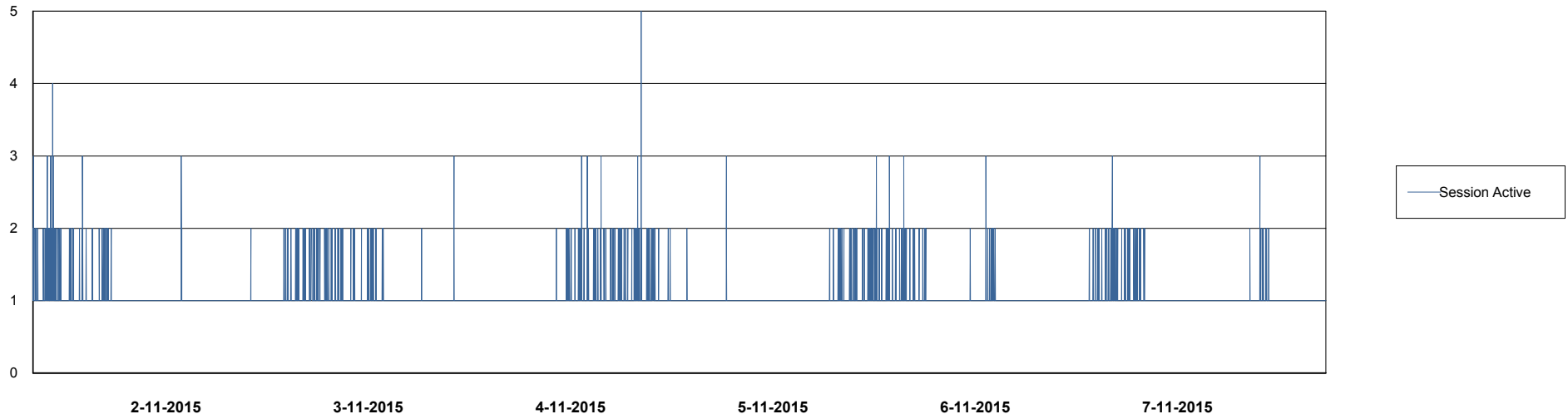
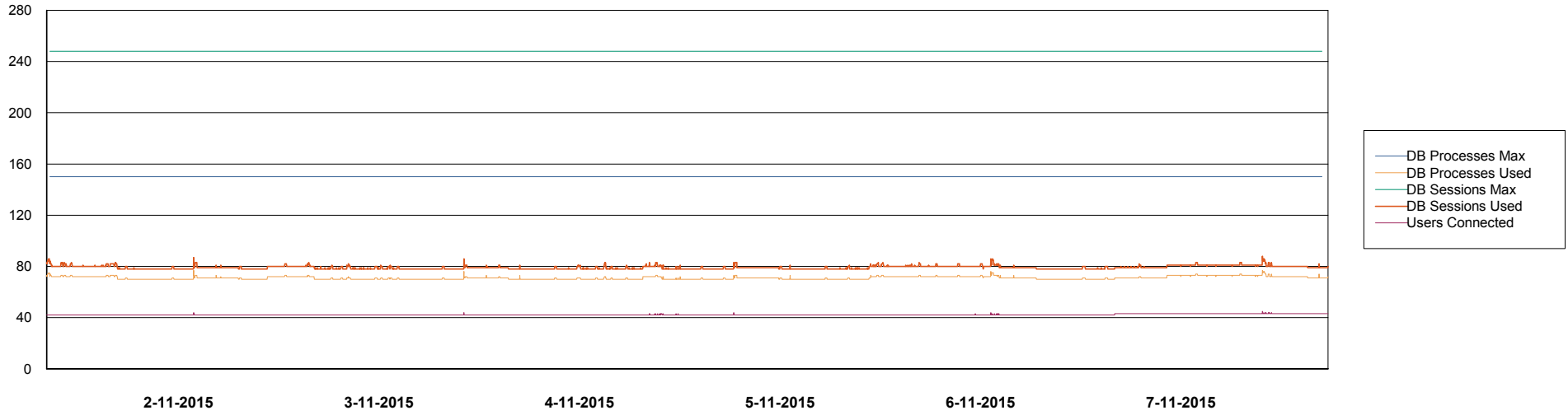
	Used disk space on / (GB)	Total disk space on / (GB)	Free disk space on / (GB)
7-11-2015	95	138	36
6-11-2015	95	138	36
5-11-2015	95	138	36
4-11-2015	95	138	36
3-11-2015	95	138	36
2-11-2015	95	138	36
1-11-2015	95	138	36

Weekly SLA Customer Report

Customer JWR Production
Database ID 43



DATABASE PERFORMANCE JWRDB_Production



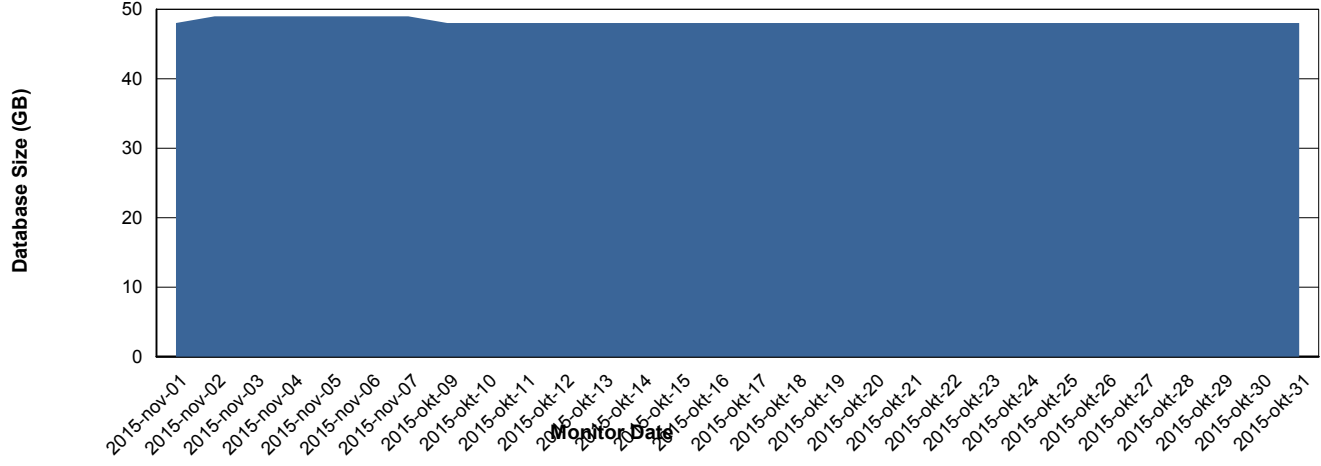
Weekly SLA Customer Report

Customer JWR Production
 Database ID 43



=====
 DATABASE SIZE JWRDB_Production
 =====

Database growth over last month



=====
 DATABASE TABLESPACES JWRDB_Production
 =====

TOTAL DATABASE SIZE PER TABLESPACE

Date	Tablespace Name	Filesize (Gb)	Usedsize (Gb)	Percentage free
7-11-2015	ABSDATA	18	14	22
	INDX	40	34	15
6-11-2015	ABSDATA	18	14	22
	INDX	40	34	15
5-11-2015	ABSDATA	18	14	22
	INDX	40	34	15
4-11-2015	ABSDATA	18	14	22
	INDX	40	34	15
3-11-2015	ABSDATA	18	14	22
	INDX	40	34	15
2-11-2015	ABSDATA	18	14	22
	INDX	40	34	15
1-11-2015	ABSDATA	18	14	22
	INDX	40	34	15

Weekly SLA Customer Report

Customer JWR Production
Database ID 43



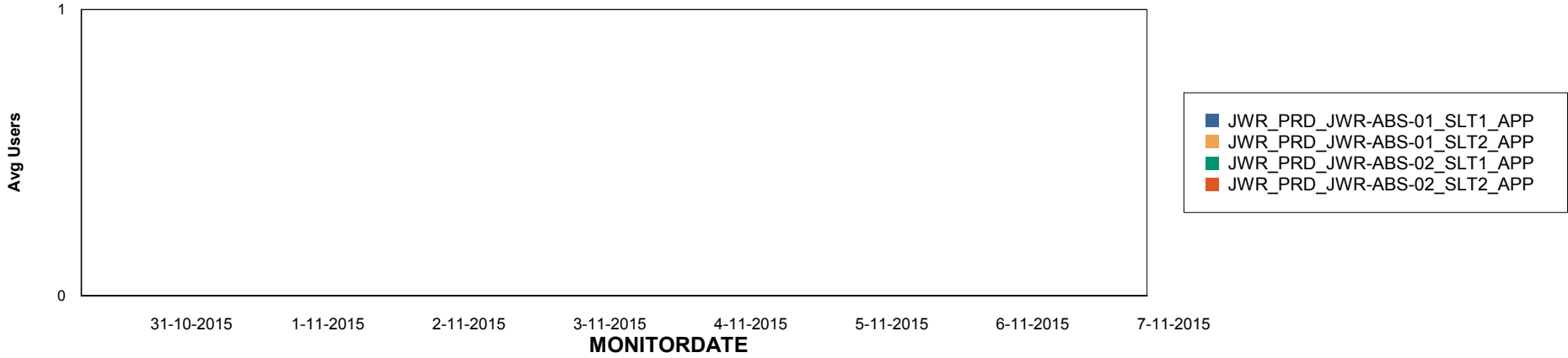
Weekly SLA Customer Report

Customer JWR Production
Database ID 43

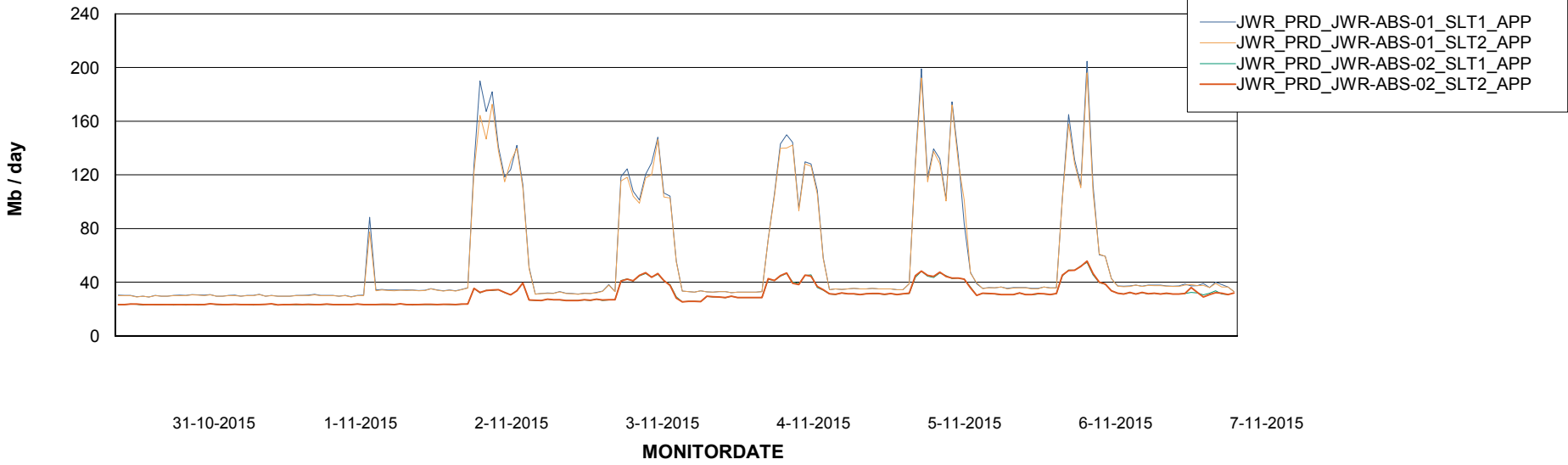


=====
ABSolute Application Server Services
=====

Disaster per ABS Server



Avg memory used per ABS Server Service



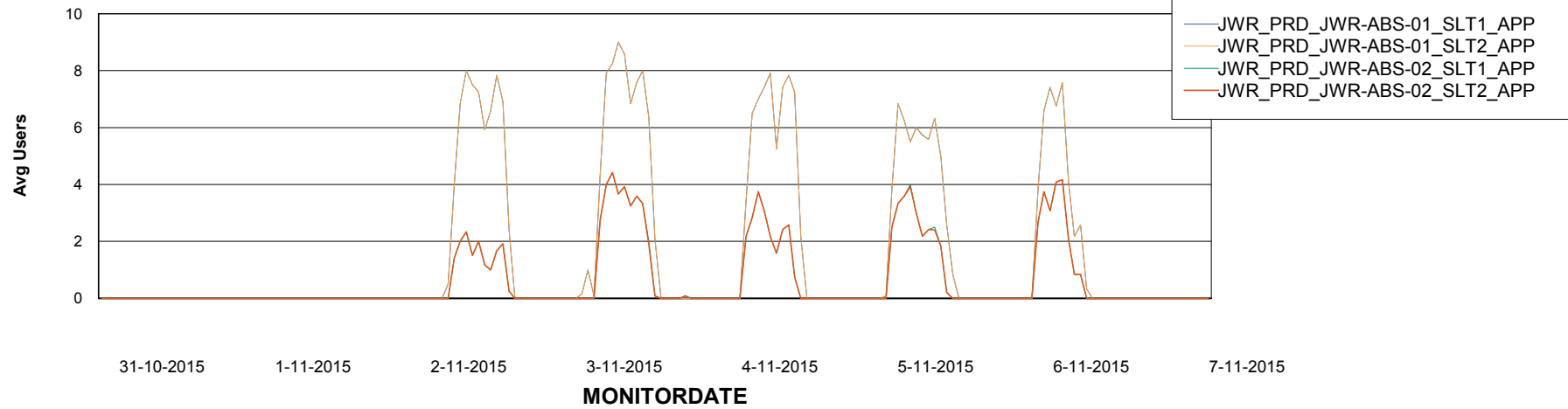
Weekly SLA Customer Report

Customer JWR Production
Database ID 43



=====
ABSolute Application Server Services
=====

Avg users per day per ABS server



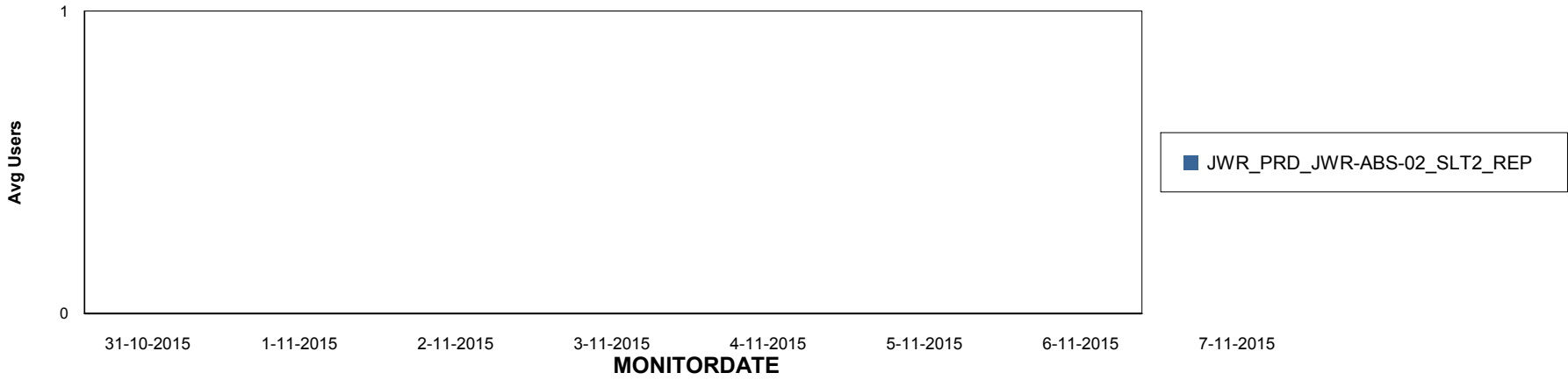
Weekly SLA Customer Report

Customer JWR Production
Database ID 43

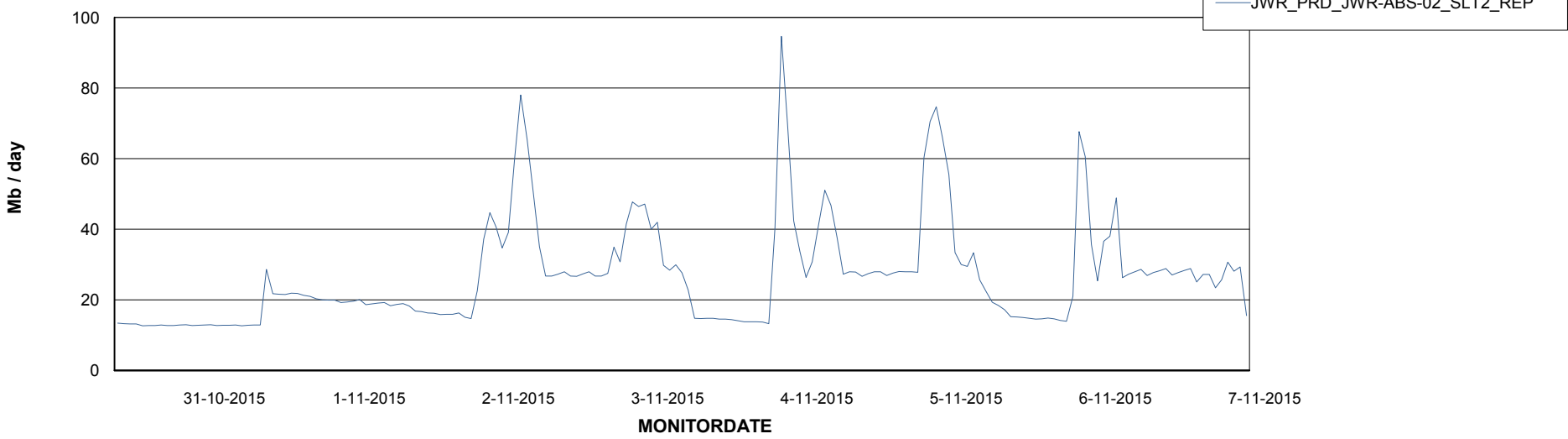


=====
ABSolute Application ReportServer Services
=====

Disaster per ReportServer



Avg memory used per ReportServer Service



Weekly SLA Customer Report

Customer JWR Production
Database ID 43



Disaster per ABS component

