

Weekly SLA Customer Report

Customer CIW Production
 Database ID 45



=====
 HARDDISK USAGE CIW_PRD_ORACLE1
 =====

	Total disk space on C (GB)	Free disk space on C (GB)	Total disk space on D (GB)	Free disk space on D (GB)	Total disk space on E (GB)	Free disk space on E (GB)
7-11-2015	276	136	279	185	279	250
6-11-2015	276	136	279	185	279	250
5-11-2015	276	136	279	185	279	251
4-11-2015	276	136	279	185	279	251
3-11-2015	276	136	279	185	279	252
2-11-2015	276	137	279	185	279	253
1-11-2015	276	137	279	185	279	254

=====
 HARDDISK USAGE CIW_PRD_ORACLE2
 =====

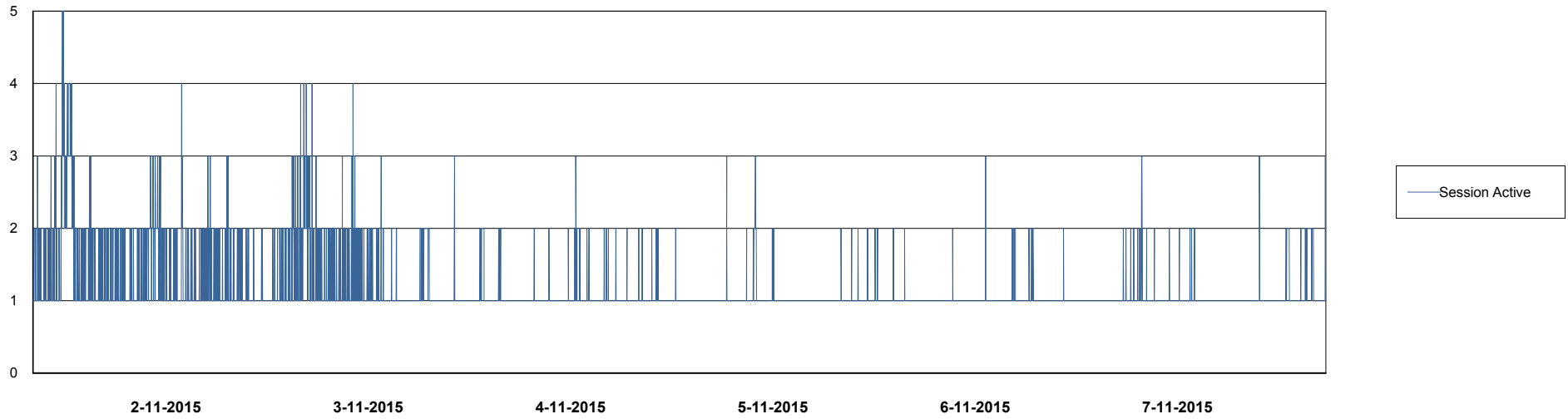
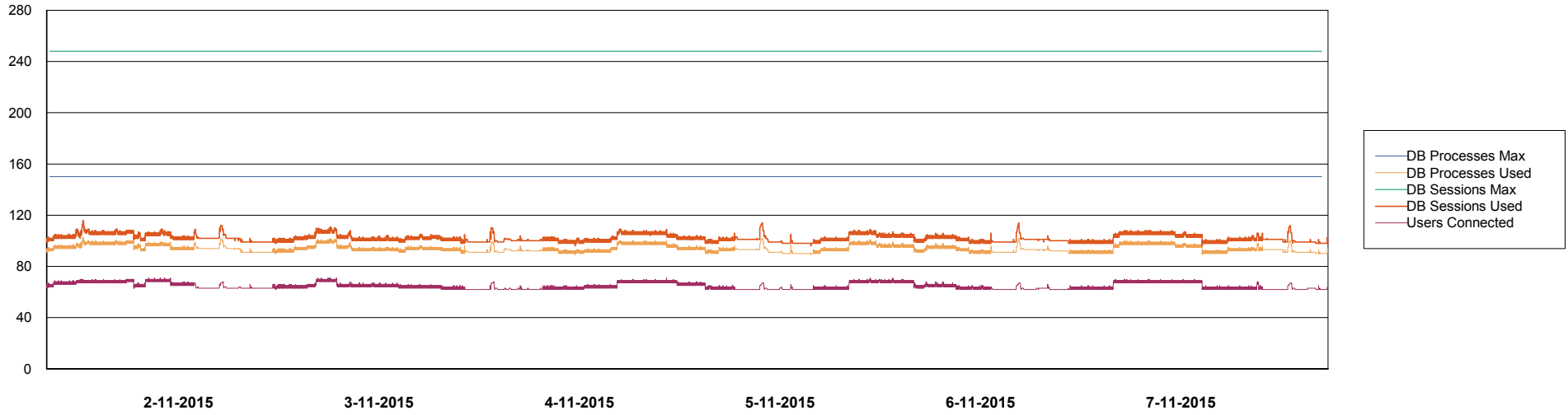
	Total disk space on C (GB)	Free disk space on C (GB)	Total disk space on D (GB)	Free disk space on D (GB)	Total disk space on E (GB)	Free disk space on E (GB)
7-11-2015	555	373	558	547	558	487
6-11-2015	555	373	558	547	558	487
5-11-2015	555	373	558	547	558	488
4-11-2015	555	373	558	547	558	488
3-11-2015	555	373	558	547	558	489
2-11-2015	555	373	558	547	558	490
1-11-2015	555	373	558	547	558	491

Weekly SLA Customer Report

Customer CIW Production
Database ID 45



DATABASE PERFORMANCE CIWDB_Production

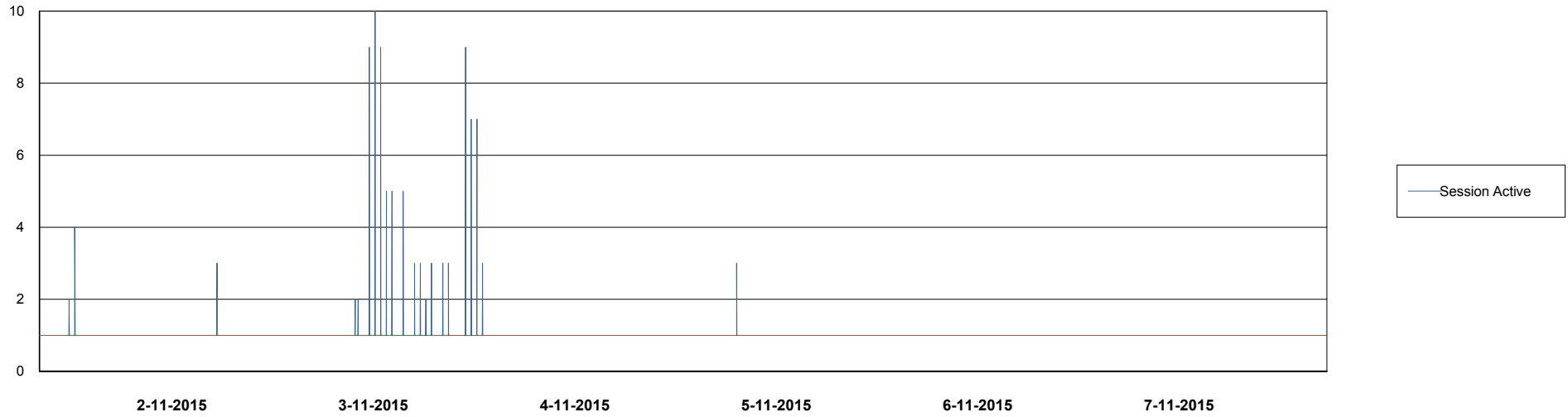
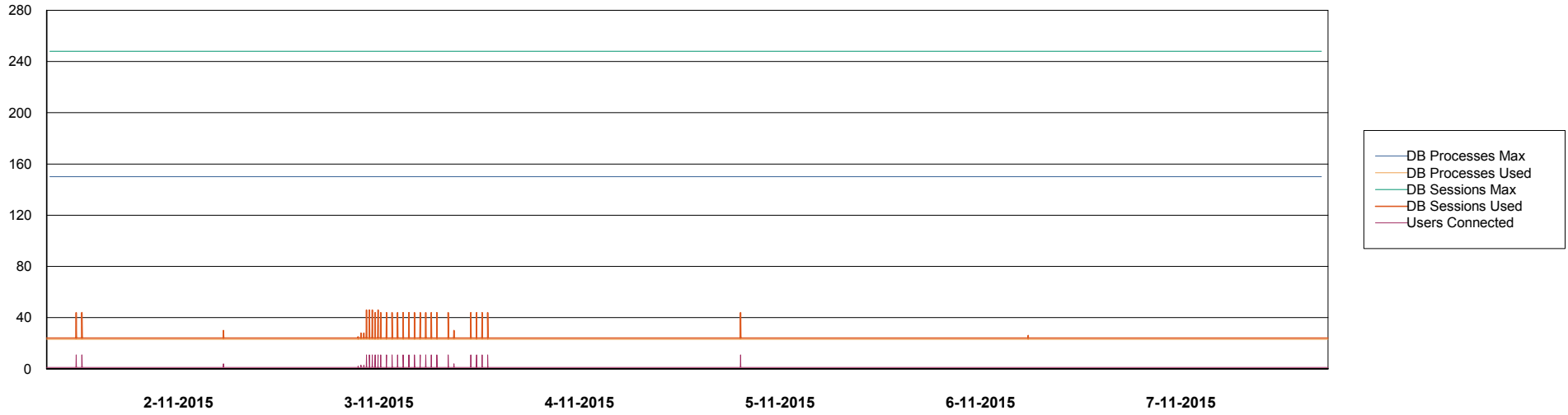


Weekly SLA Customer Report

Customer CIW Production
Database ID 45



=====
DATABASE PERFORMANCE CIWDB_Standby
=====



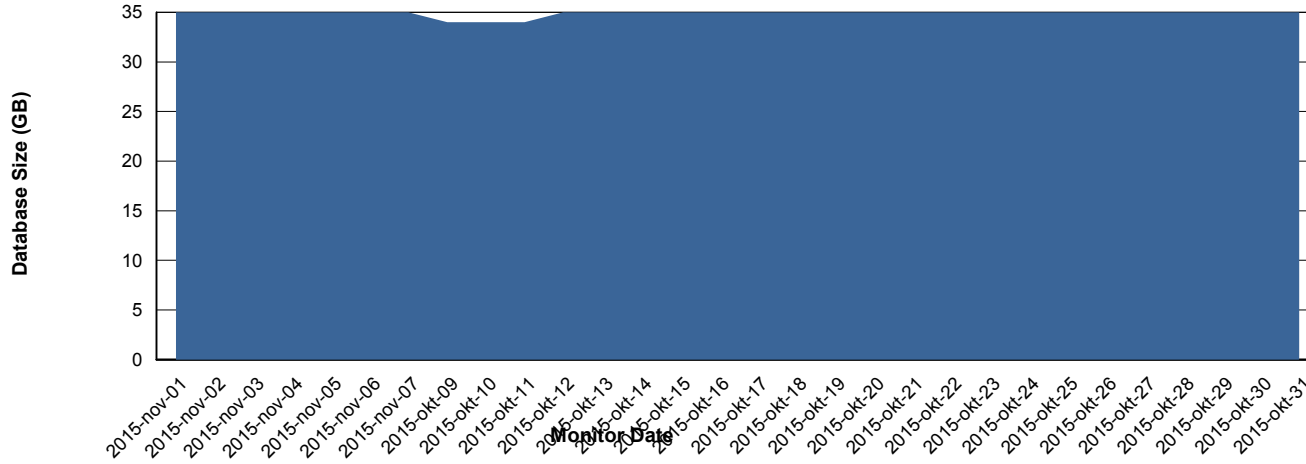
Weekly SLA Customer Report

Customer CIW Production
 Database ID 45



=====
 DATABASE SIZE CIWDB_Production
 =====

Database growth over last month



=====
 DATABASE TABLESPACES CIWDB_Production
 =====

TOTAL DATABASE SIZE PER TABLESPACE

Date	Tablespace Name	Filesize (Gb)	Usedsize (Gb)	Percentage free
7-11-2015	ABSDATA	38	31	18
	INDX	4	3	25
6-11-2015	ABSDATA	38	31	18
	INDX	4	3	25
5-11-2015	ABSDATA	38	31	18
	INDX	4	3	25
4-11-2015	ABSDATA	38	31	18
	INDX	4	3	25
3-11-2015	ABSDATA	38	31	18
	INDX	4	3	25
2-11-2015	ABSDATA	38	31	18
	INDX	4	3	25
1-11-2015	ABSDATA	38	31	18
	INDX	4	3	25

Weekly SLA Customer Report

Customer CIW Production
Database ID 45



=====
STANDBY DATABASE HEALTH CIW Production
=====

Recovery lag for last 7 days

