

Weekly SLA Customer Report

Customer NIX_Production
 Database ID 51



=====
 HARDDISK USAGE NIX_PRD_ABSAPP1
 =====

| | Total disk space on C (GB) | Free disk space on C (GB) |
|------------|----------------------------|---------------------------|
| 31-10-2015 | 200 | 176 |
| 30-10-2015 | 200 | 176 |
| 29-10-2015 | 200 | 176 |
| 28-10-2015 | 200 | 176 |
| 27-10-2015 | 200 | 176 |
| 26-10-2015 | 200 | 176 |
| 25-10-2015 | 200 | 176 |

=====
 HARDDISK USAGE NIX_PRD_ABSAPP2
 =====

| | Total disk space on C (GB) | Free disk space on C (GB) |
|------------|----------------------------|---------------------------|
| 31-10-2015 | 200 | 167 |
| 30-10-2015 | 200 | 167 |
| 29-10-2015 | 200 | 167 |
| 28-10-2015 | 200 | 167 |
| 27-10-2015 | 200 | 169 |
| 26-10-2015 | 200 | 175 |
| 25-10-2015 | 200 | 176 |

Weekly SLA Customer Report

Customer NIX_Production
 Database ID 51



=====
 HARDDISK USAGE NIX_PRD_ABSWEB01
 =====

| | Total disk space on C (GB) | Free disk space on C (GB) |
|------------|----------------------------|---------------------------|
| 31-10-2015 | 300 | 281 |
| 30-10-2015 | 300 | 281 |
| 29-10-2015 | 300 | 281 |
| 28-10-2015 | 300 | 281 |
| 27-10-2015 | 300 | 281 |
| 26-10-2015 | 300 | 281 |
| 25-10-2015 | 300 | 281 |

=====
 HARDDISK USAGE NIX_PRD_ORACLE_B11
 =====

| | Total disk space on C (GB) | Free disk space on C (GB) | Total disk space on E (GB) | Free disk space on E (GB) | Total disk space on F (GB) | Free disk space on F (GB) | Total disk space on G (GB) | Free disk space on G (GB) |
|------------|----------------------------|---------------------------|----------------------------|---------------------------|----------------------------|---------------------------|----------------------------|---------------------------|
| 31-10-2015 | 279 | 203 | 558 | 387 | 558 | 457 | 279 | 234 |
| 30-10-2015 | 279 | 203 | 558 | 387 | 558 | 458 | 279 | 234 |
| 29-10-2015 | 279 | 203 | 558 | 387 | 558 | 458 | 279 | 234 |
| 28-10-2015 | 279 | 203 | 558 | 387 | 558 | 458 | 279 | 234 |
| 27-10-2015 | 279 | 203 | 558 | 387 | 558 | 458 | 279 | 234 |
| 26-10-2015 | 279 | 203 | 558 | 387 | 558 | 458 | 279 | 234 |
| 25-10-2015 | 279 | 203 | 558 | 387 | 558 | 458 | 279 | 234 |

Weekly SLA Customer Report

Customer NIX_Production
 Database ID 51



=====
 HARDDISK USAGE NIX_PRD_ORCDB1
 =====

| | Total disk space on C (GB) | Free disk space on C (GB) | Total disk space on E (GB) | Free disk space on E (GB) | Total disk space on F (GB) | Free disk space on F (GB) | Total disk space on G (GB) | Free disk space on G (GB) |
|------------|----------------------------|---------------------------|----------------------------|---------------------------|----------------------------|---------------------------|----------------------------|---------------------------|
| 31-10-2015 | 279 | 94 | 558 | 492 | 558 | 457 | 279 | 94 |
| 30-10-2015 | 279 | 94 | 558 | 492 | 558 | 457 | 279 | 95 |
| 29-10-2015 | 279 | 94 | 558 | 492 | 558 | 457 | 279 | 97 |
| 28-10-2015 | 279 | 94 | 558 | 487 | 558 | 449 | 279 | 100 |
| 27-10-2015 | 279 | 94 | 558 | 487 | 558 | 450 | 279 | 102 |
| 26-10-2015 | 279 | 94 | 558 | 487 | 558 | 452 | 279 | 104 |
| 25-10-2015 | 279 | 94 | 558 | 491 | 558 | 456 | 279 | 106 |

=====
 HARDDISK USAGE NIX_PRD_ORCDB2
 =====

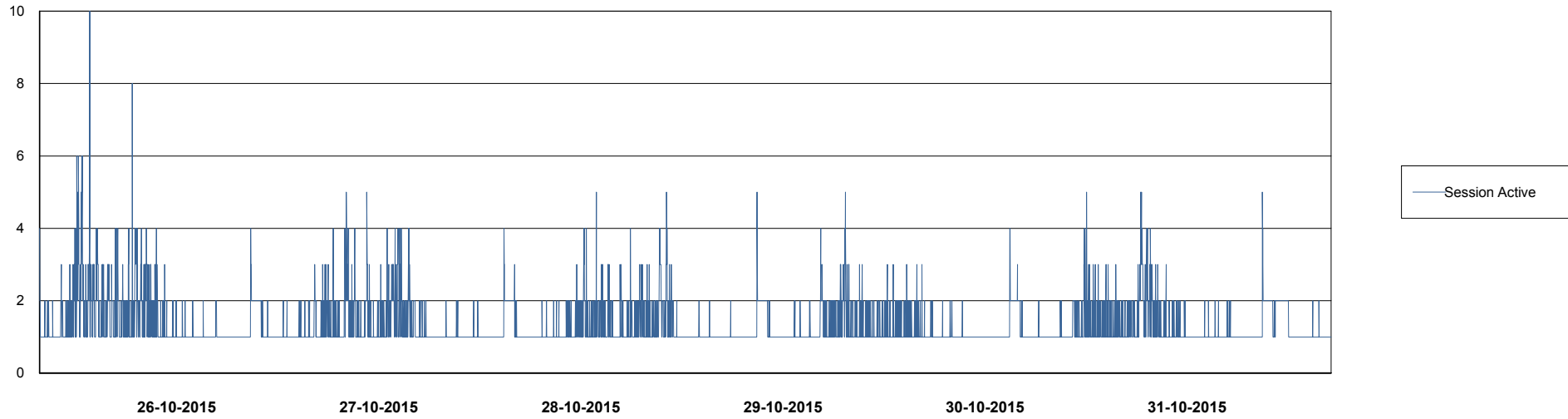
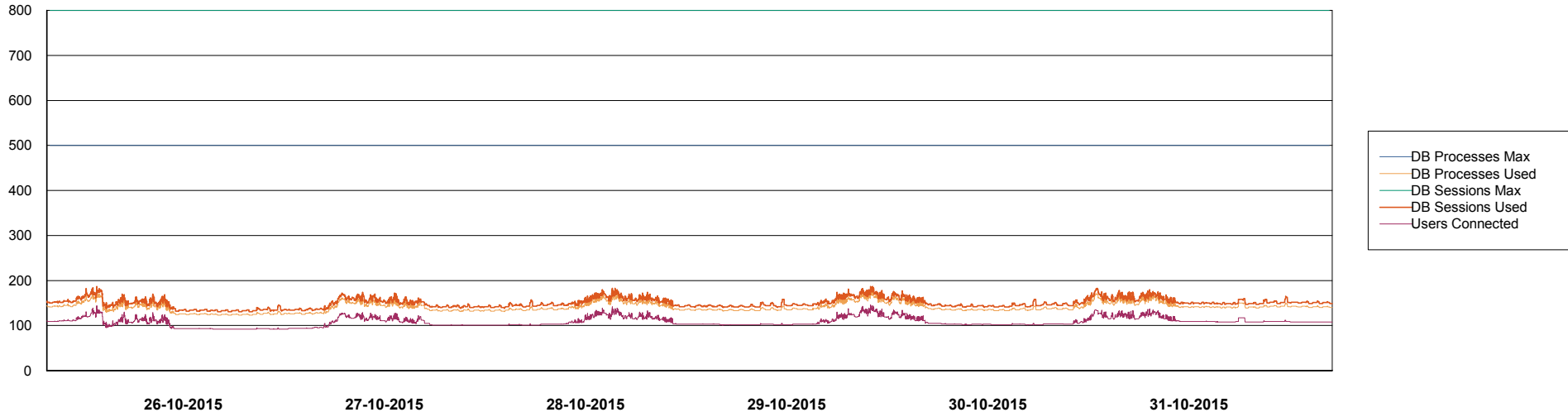
| | Total disk space on C (GB) | Free disk space on C (GB) | Total disk space on E (GB) | Free disk space on E (GB) | Total disk space on F (GB) | Free disk space on F (GB) | Total disk space on G (GB) | Free disk space on G (GB) |
|------------|----------------------------|---------------------------|----------------------------|---------------------------|----------------------------|---------------------------|----------------------------|---------------------------|
| 31-10-2015 | 279 | 236 | 558 | 390 | 558 | 457 | 279 | 110 |
| 30-10-2015 | 279 | 236 | 558 | 390 | 558 | 457 | 279 | 112 |
| 29-10-2015 | 279 | 236 | 558 | 390 | 558 | 457 | 279 | 15 |
| 28-10-2015 | 279 | 236 | 558 | 390 | 558 | 457 | 279 | 15 |
| 27-10-2015 | 279 | 236 | 558 | 392 | 558 | 457 | 279 | 18 |
| 26-10-2015 | 279 | 236 | 558 | 398 | 558 | 457 | 279 | 20 |
| 25-10-2015 | 279 | 236 | 558 | 399 | 558 | 457 | 279 | 21 |

Weekly SLA Customer Report

Customer NIX_Production
Database ID 51



DATABASE PERFORMANCE NIXDB_Production



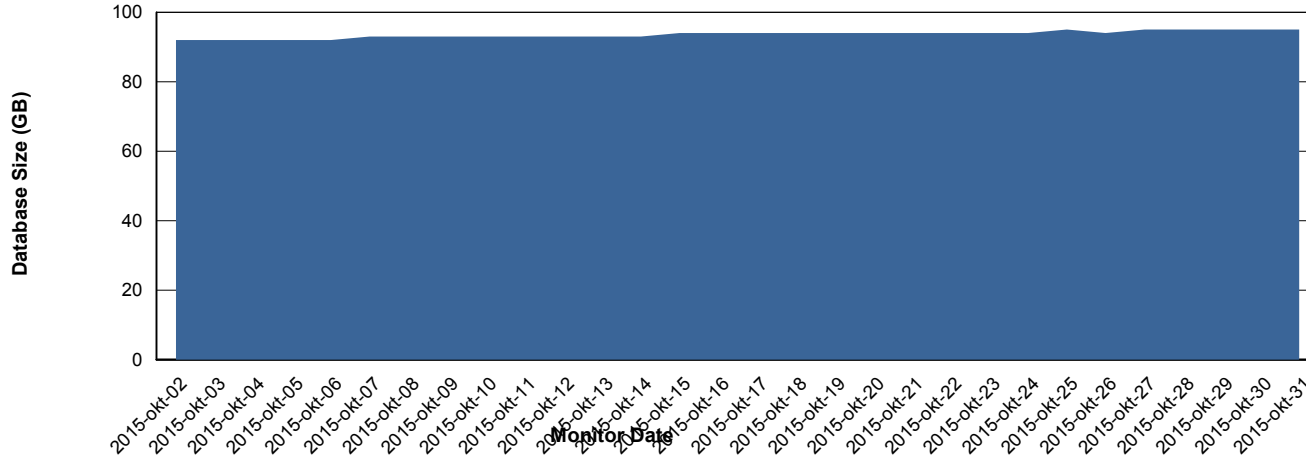
Weekly SLA Customer Report

Customer NIX_Production
 Database ID 51



=====
 DATABASE SIZE NIXDB_Production
 =====

Database growth over last month



=====
 DATABASE TABLESPACES NIXDB_Production
 =====

TOTAL DATABASE SIZE PER TABLESPACE

| Date | Tablespace Name | Filesize (Gb) | Usedsize (Gb) | Percentage free |
|------------|-----------------|---------------|---------------|-----------------|
| 31-10-2015 | ABSDATA | 50 | 36 | 28 |
| | INDX | 100 | 58 | 42 |
| 30-10-2015 | ABSDATA | 50 | 36 | 28 |
| | INDX | 100 | 58 | 42 |
| 29-10-2015 | ABSDATA | 50 | 36 | 28 |
| | INDX | 100 | 58 | 42 |
| 28-10-2015 | ABSDATA | 50 | 36 | 28 |
| | INDX | 100 | 57 | 43 |
| 27-10-2015 | ABSDATA | 50 | 36 | 28 |
| | INDX | 100 | 57 | 43 |
| 26-10-2015 | ABSDATA | 50 | 36 | 28 |
| | INDX | 100 | 57 | 43 |
| 25-10-2015 | ABSDATA | 50 | 36 | 28 |
| | INDX | 100 | 57 | 43 |

Weekly SLA Customer Report

Customer NIX_Production
Database ID 51



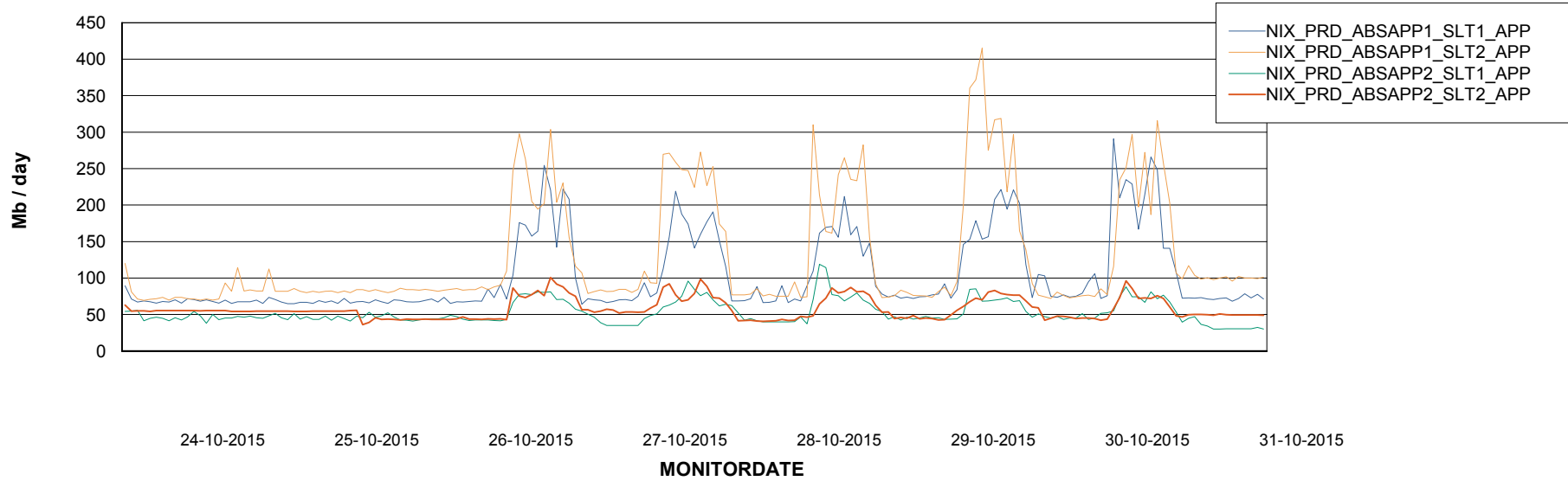
Weekly SLA Customer Report

Customer NIX_Production
Database ID 51



=====
ABSSolute Application Server Services
=====

Avg memory used per ABS Server Service



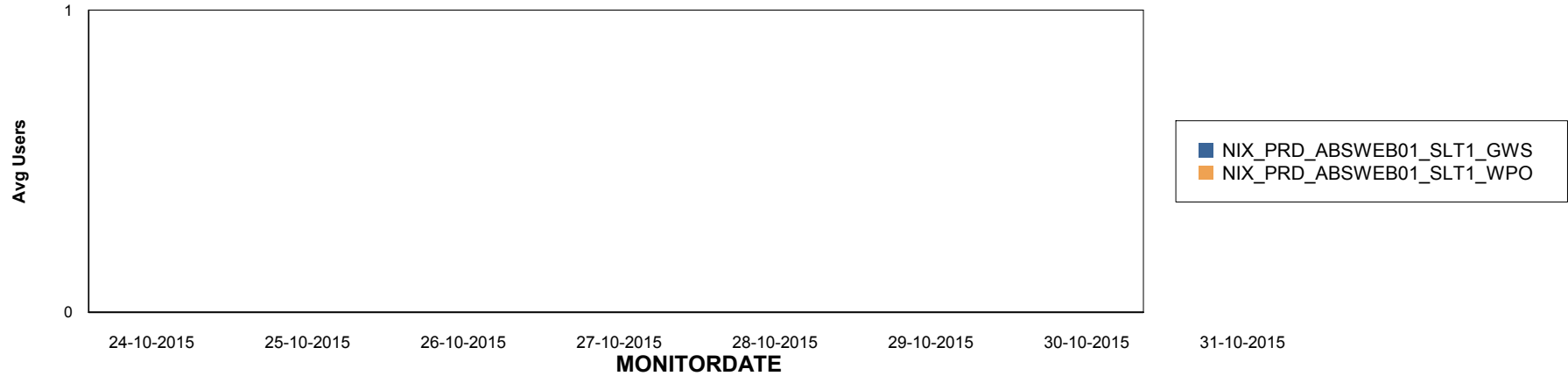
Weekly SLA Customer Report

Customer NIX_Production
Database ID 51

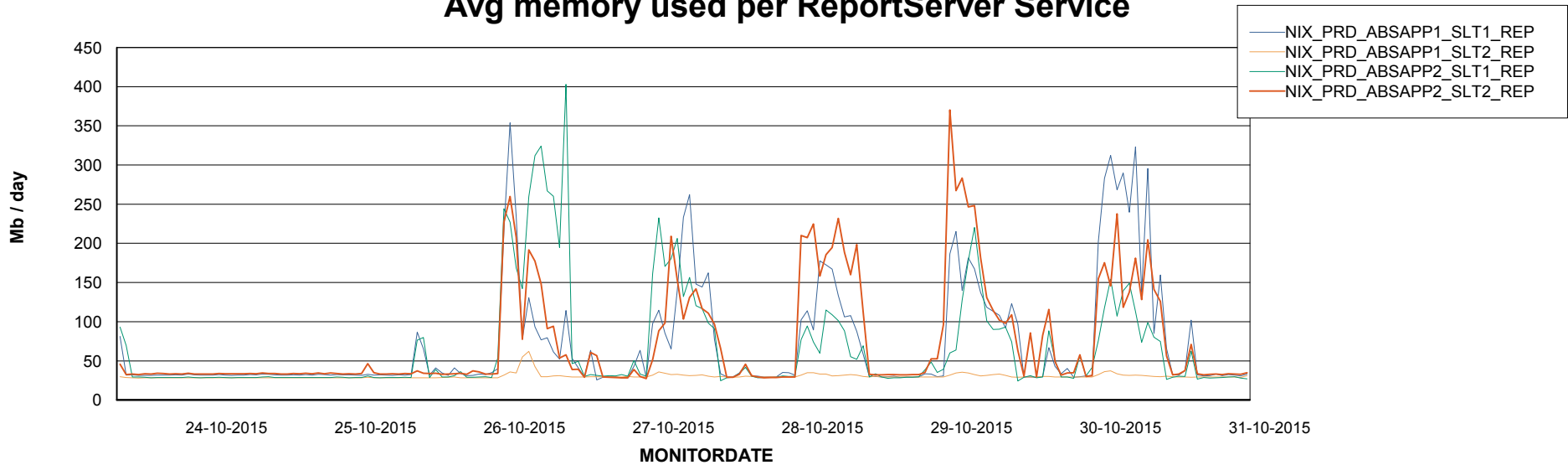


=====
ABSolute Application ReportServer Services
=====

Disaster per ReportServer



Avg memory used per ReportServer Service



Weekly SLA Customer Report

Customer NIX_Production
Database ID 51



Disaster per ABS component

