

# Weekly SLA Customer Report

Customer JWR Production  
Database ID 43



=====  
HARDDISK USAGE JWR\_PRD\_JWR-ABS-01  
=====

	Used disk space on / (GB)	Total disk space on / (GB)	Free disk space on / (GB)
31-10-2015	32	49	15
30-10-2015	32	49	15
29-10-2015	32	49	15
28-10-2015	32	49	15
27-10-2015	32	49	15
26-10-2015	29	49	17
25-10-2015	29	49	18

=====  
HARDDISK USAGE JWR\_PRD\_JWR-ABS-02  
=====

	Used disk space on / (GB)	Total disk space on / (GB)	Free disk space on / (GB)
31-10-2015	34	49	12
30-10-2015	34	49	12
29-10-2015	34	49	12
28-10-2015	34	49	12
27-10-2015	34	49	12
26-10-2015	34	49	12
25-10-2015	34	49	12

## Weekly SLA Customer Report

Customer      JWR Production  
 Database ID    43



=====  
 HARDDISK USAGE    JWR\_PRD\_JWR-ODB-01  
 =====

	Used disk space on / (GB)	Total disk space on / (GB)	Free disk space on / (GB)
31-10-2015	97	148	44
30-10-2015	97	148	43
29-10-2015	97	148	43
28-10-2015	97	148	43
27-10-2015	97	148	43
26-10-2015	98	148	43
25-10-2015	97	148	44

=====  
 HARDDISK USAGE    JWR\_PRD\_JWR-ODB-02  
 =====

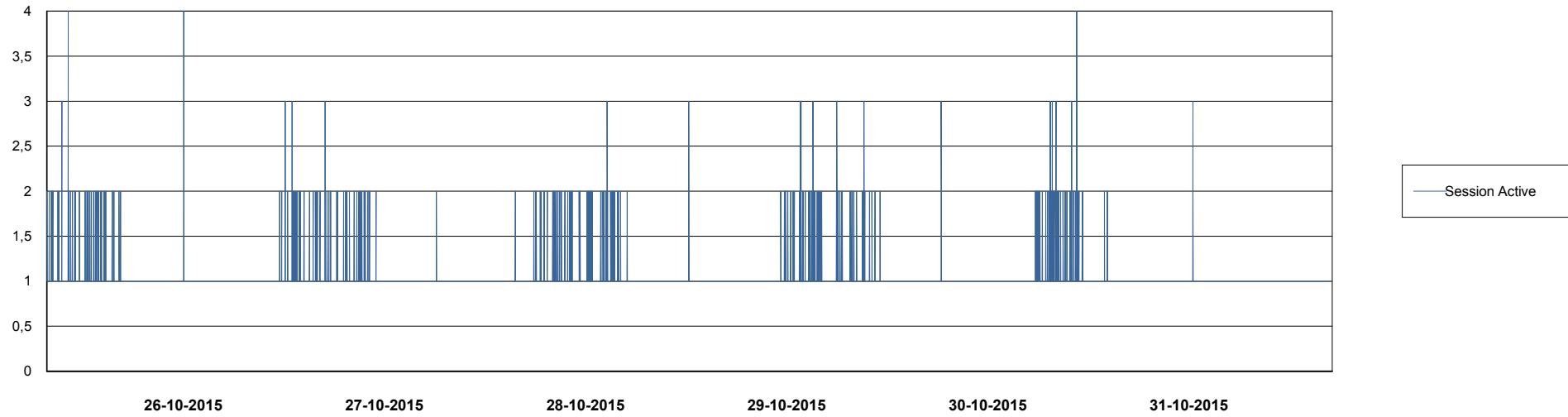
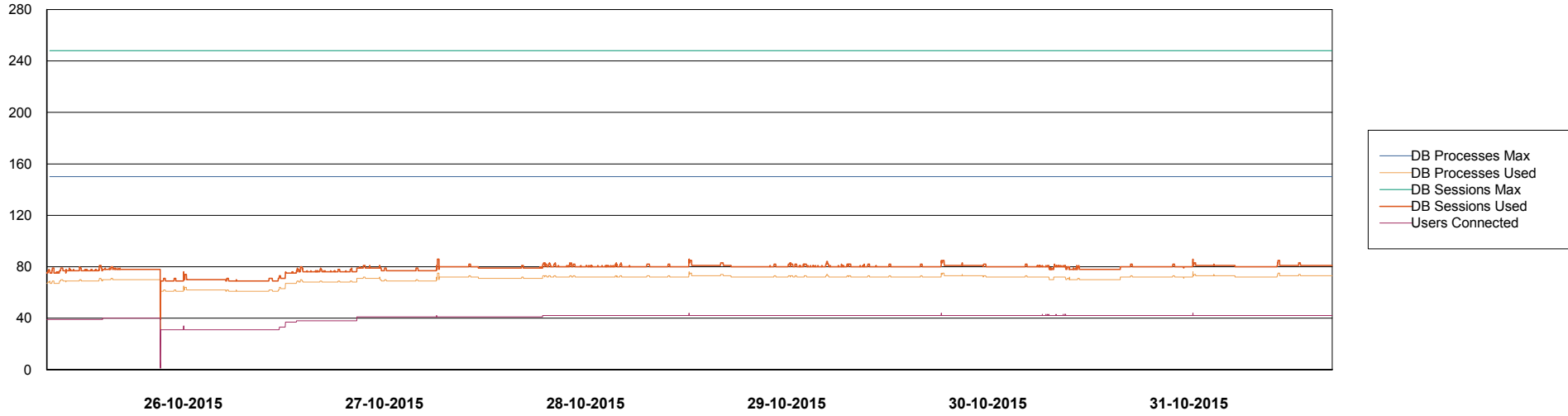
	Used disk space on / (GB)	Total disk space on / (GB)	Free disk space on / (GB)
31-10-2015	95	138	36
30-10-2015	95	138	36
29-10-2015	95	138	36
28-10-2015	95	138	36
27-10-2015	95	138	36
26-10-2015	95	138	36
25-10-2015	94	138	36

# Weekly SLA Customer Report

Customer JWR Production  
Database ID 43



DATABASE PERFORMANCE JWRDB\_Production



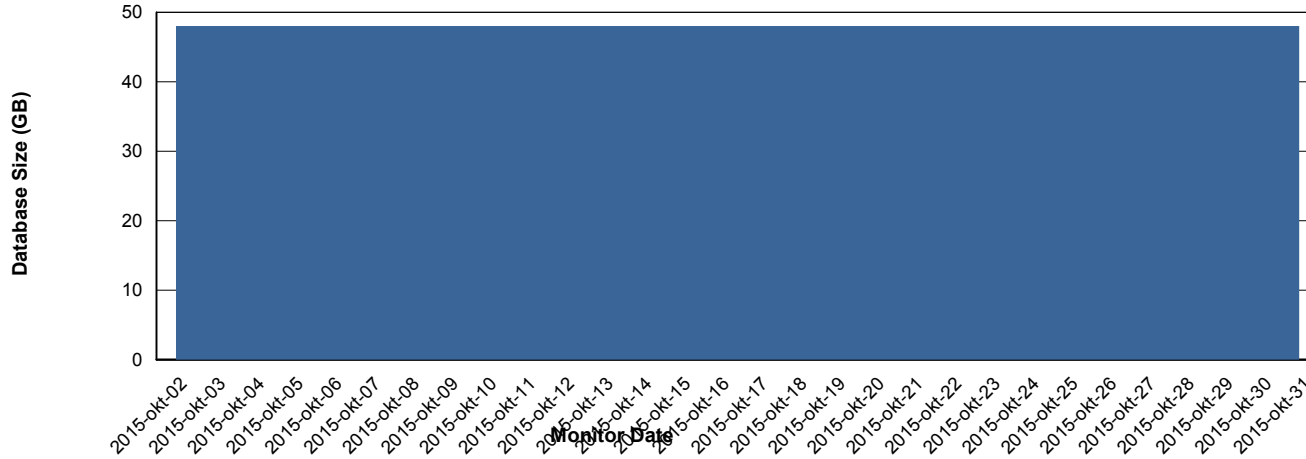
# Weekly SLA Customer Report

Customer JWR Production  
 Database ID 43



=====  
 DATABASE SIZE JWRDB\_Production  
 =====

## Database growth over last month



=====  
 DATABASE TABLESPACES JWRDB\_Production  
 =====

### TOTAL DATABASE SIZE PER TABLESPACE

Date	Tablespace Name	Filesize (Gb)	Usedsize (Gb)	Percentage free
31-10-2015	ABSDATA	18	14	22
	INDX	40	34	15
30-10-2015	ABSDATA	18	14	22
	INDX	40	34	15
29-10-2015	ABSDATA	18	14	22
	INDX	40	34	15
28-10-2015	ABSDATA	18	14	22
	INDX	40	34	15
27-10-2015	ABSDATA	18	14	22
	INDX	40	34	15
26-10-2015	ABSDATA	18	14	22
	INDX	40	34	15
25-10-2015	ABSDATA	18	14	22
	INDX	40	34	15

# Weekly SLA Customer Report

---

Customer JWR Production  
Database ID 43



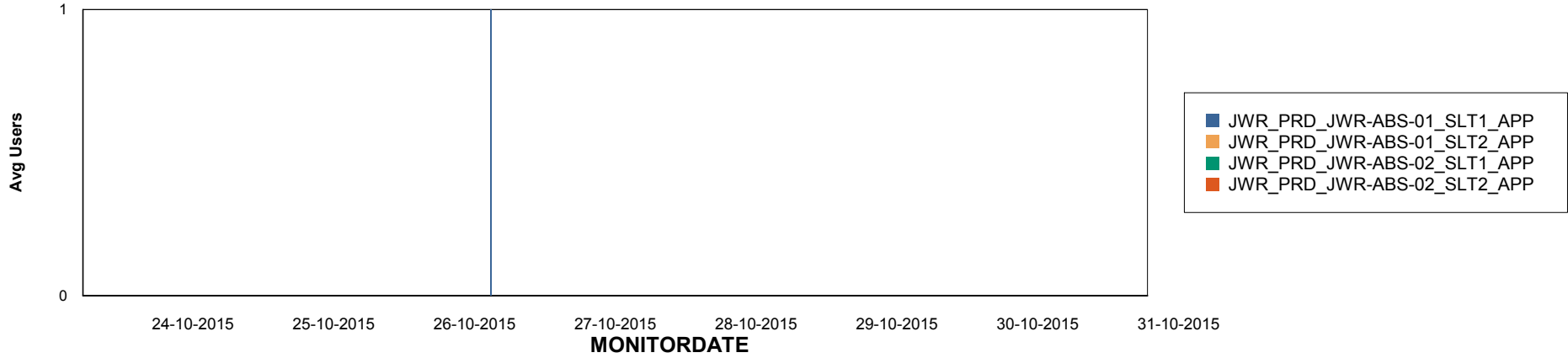
# Weekly SLA Customer Report

Customer JWR Production  
Database ID 43

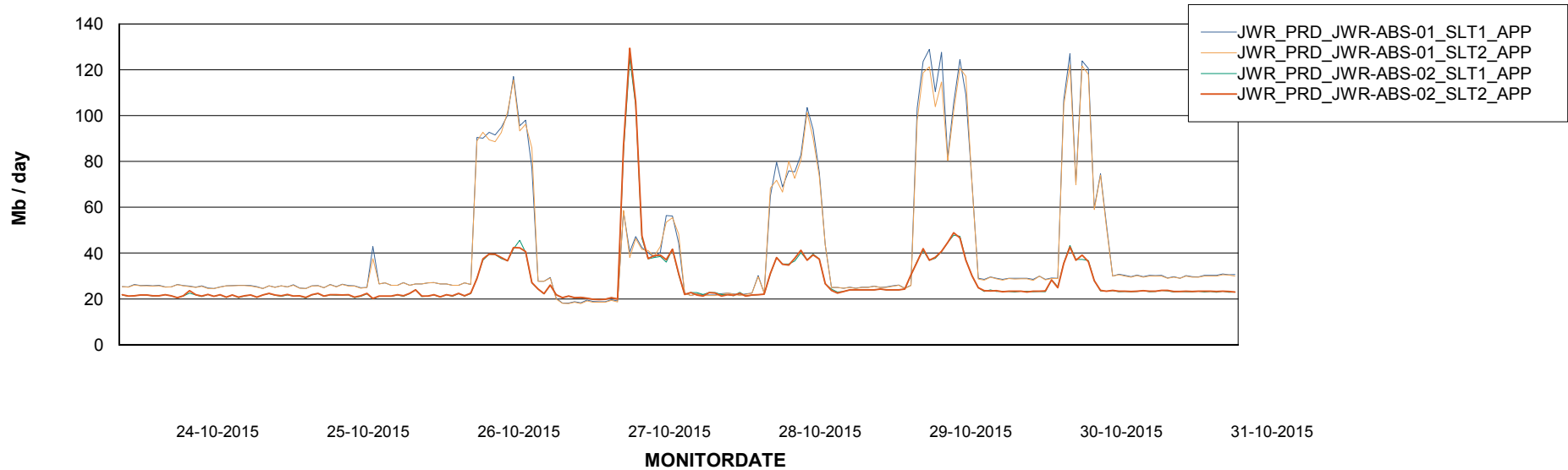


## ABSolute Application Server Services

### Disaster per ABS Server



### Avg memory used per ABS Server Service



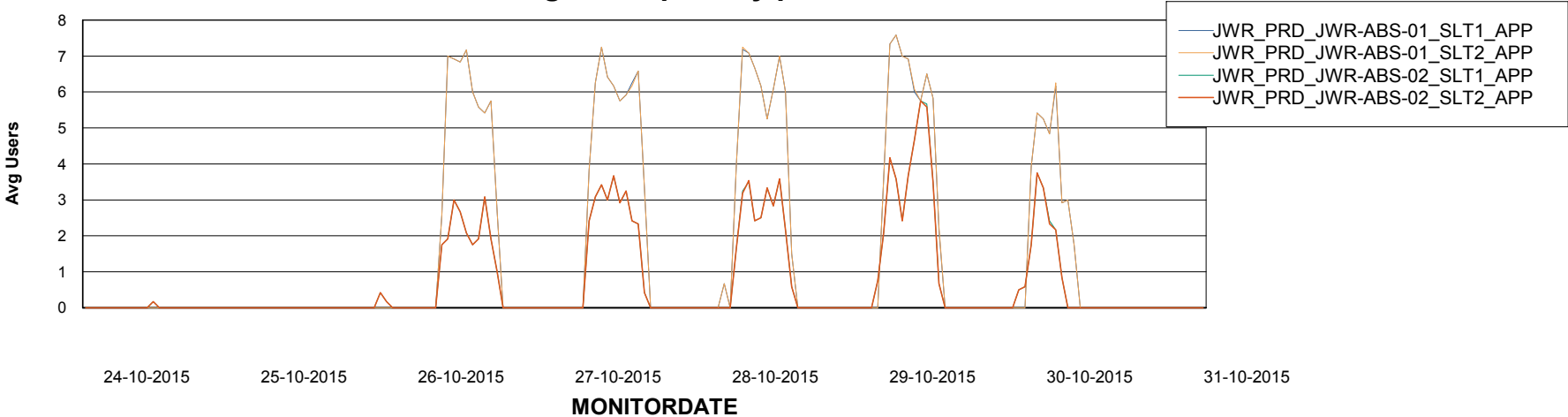
# Weekly SLA Customer Report

Customer JWR Production  
Database ID 43



=====  
ABSolute Application Server Services  
=====

### Avg users per day per ABS server



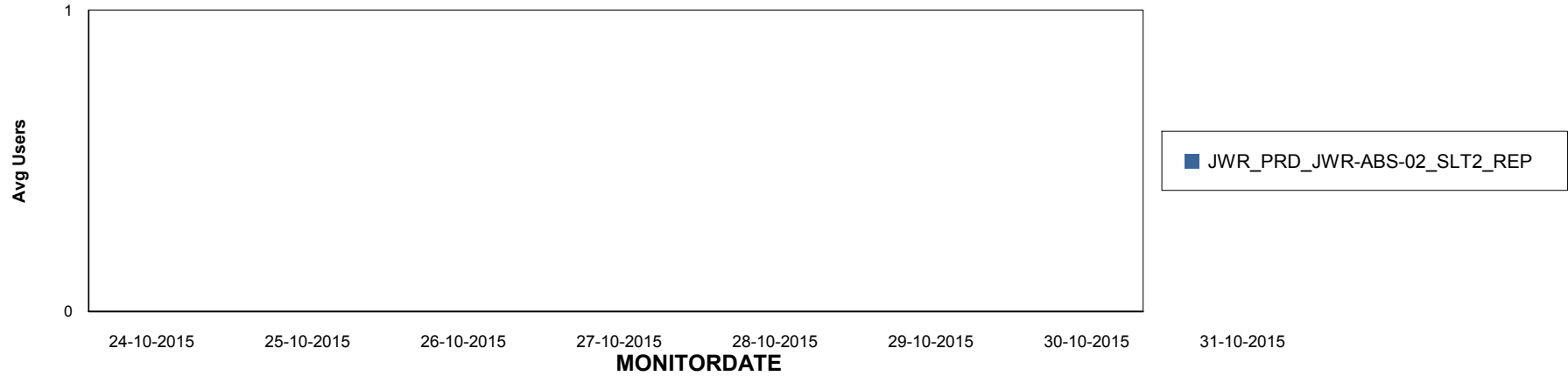
# Weekly SLA Customer Report

Customer JWR Production  
Database ID 43

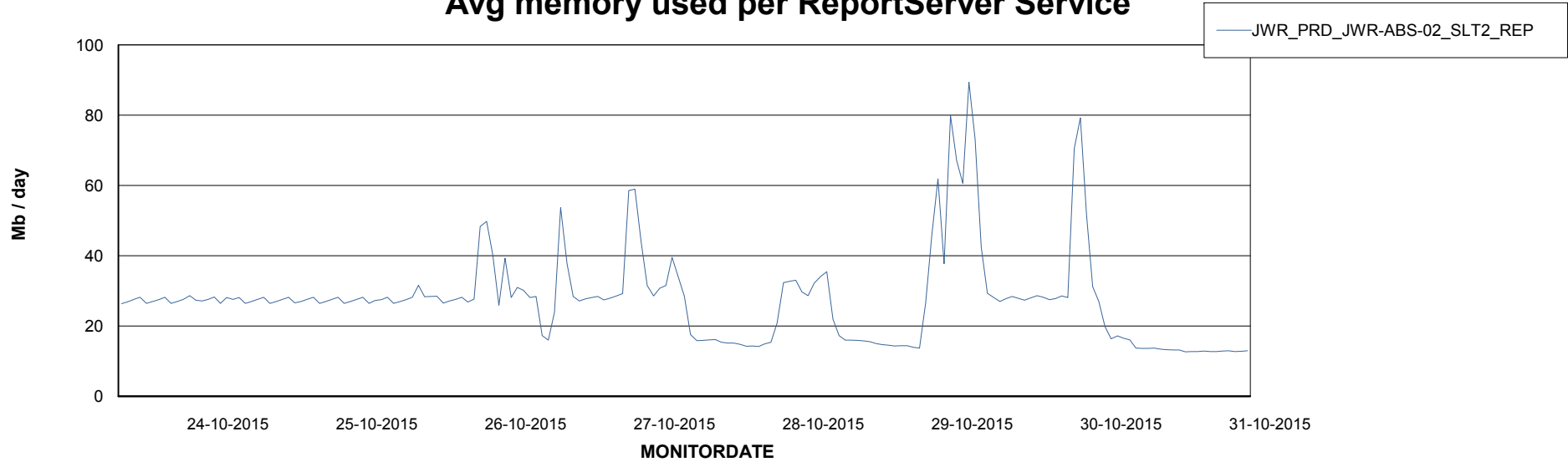


=====  
ABSolute Application ReportServer Services  
=====

## Disaster per ReportServer



## Avg memory used per ReportServer Service



# Weekly SLA Customer Report

Customer JWR Production  
Database ID 43



## Disaster per ABS component

