

Weekly SLA Customer Report

Customer CSC_Production
 Database ID 50



=====
 HARDDISK USAGE CSC_PRD_ABSSRV
 =====

	Total disk space on C (GB)	Free disk space on C (GB)	Total disk space on D (GB)	Free disk space on D (GB)	Total disk space on E (GB)	Free disk space on E (GB)
31-10-2015	102	55	220	130	325	61
30-10-2015	102	55	220	130	325	61
29-10-2015	102	55	220	130	325	61
28-10-2015	102	55	220	130	325	61
27-10-2015	102	55	220	130	325	61
26-10-2015	102	55	220	130	325	61
25-10-2015	102	55	220	130	325	61

=====
 HARDDISK USAGE CSC_PRD_ABS01
 =====

	Total disk space on C (GB)	Free disk space on C (GB)	Total disk space on D (GB)	Free disk space on D (GB)	Total disk space on E (GB)	Free disk space on E (GB)
31-10-2015	110	59	210	115	500	215
30-10-2015	110	59	210	115	500	214
29-10-2015	110	59	210	115	500	214
28-10-2015	110	59	210	115	500	214
27-10-2015	110	59	210	115	500	214
26-10-2015	110	60	210	115	500	217
25-10-2015	110	60	210	115	500	218

Weekly SLA Customer Report

Customer CSC_Production
 Database ID 50



=====
 HARDDISK USAGE CSC_PRD_ABS02
 =====

	Total disk space on C (GB)	Free disk space on C (GB)
31-10-2015	80	49
30-10-2015	80	49
29-10-2015	80	49
28-10-2015	80	51
27-10-2015	80	51
26-10-2015	80	51
25-10-2015	80	51

=====
 HARDDISK USAGE CSC_PRD_SRV-DB-ABS
 =====

	Total disk space on C (GB)	Free disk space on C (GB)	Total disk space on D (GB)	Free disk space on D (GB)	Total disk space on E (GB)	Free disk space on E (GB)
31-10-2015	145	94	294	204	679	297
30-10-2015	145	95	294	204	679	165
29-10-2015	145	95	294	204	679	103
28-10-2015	145	95	294	206	679	188
27-10-2015	145	95	294	207	679	212
26-10-2015	145	95	294	207	679	303
25-10-2015	145	95	294	207	679	332

Weekly SLA Customer Report

Customer CSC_Production
 Database ID 50



=====
 HARDDISK USAGE CSC_PRD_SRV-DB-ABS4
 =====

	Total disk space on C (GB)	Free disk space on C (GB)	Total disk space on D (GB)	Free disk space on D (GB)	Total disk space on E (GB)	Free disk space on E (GB)
31-10-2015	100	77	500	409	500	284
30-10-2015	100	77	500	409	500	255
29-10-2015	100	77	500	409	500	244
28-10-2015	100	76	500	409	500	247
27-10-2015	100	76	500	409	500	250
26-10-2015	100	76	500	409	500	260
25-10-2015	100	76	500	409	500	267

=====
 HARDDISK USAGE CSC_PRD_WEBSRV
 =====

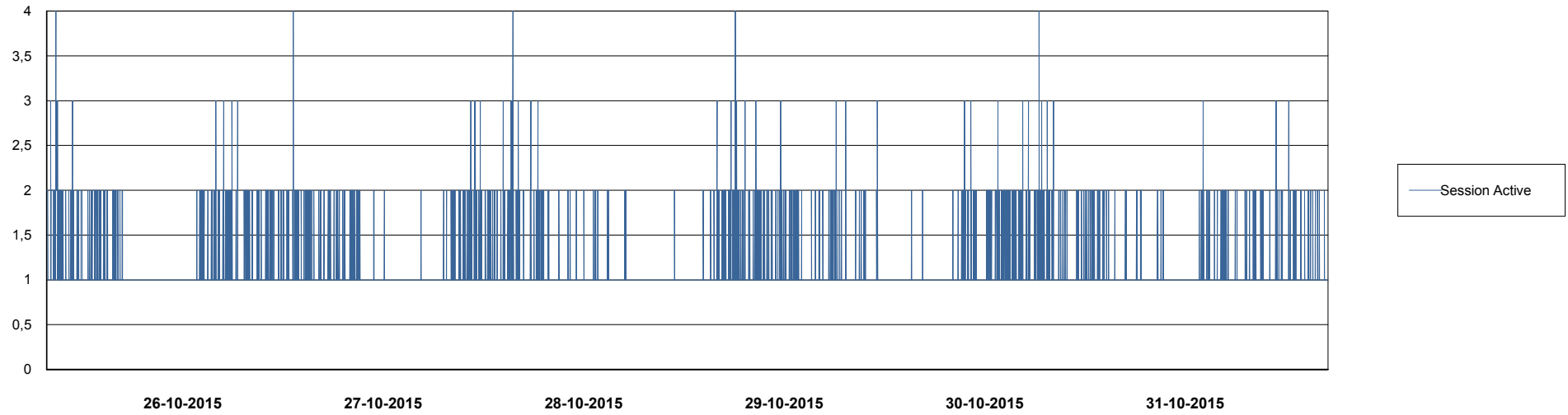
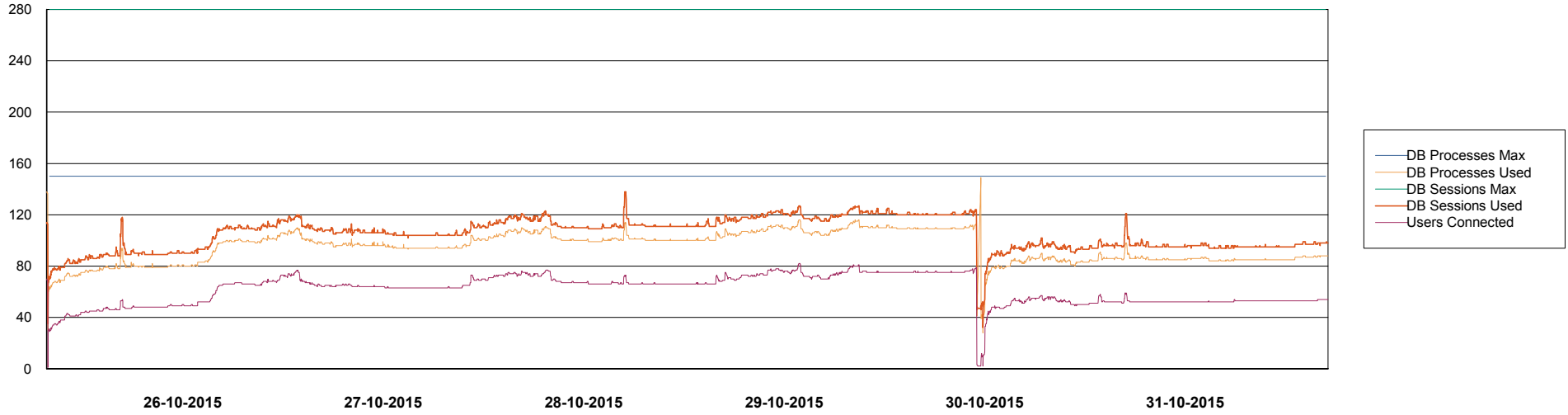
	Used disk space on C (GB)	Total disk space on C (GB)	Free disk space on C (GB)
31-10-2015	36	59	22
30-10-2015	36	59	23
29-10-2015	36	59	23
28-10-2015	36	59	23
27-10-2015	36	59	23
26-10-2015	36	59	23
25-10-2015	36	59	23

Weekly SLA Customer Report

Customer CSC_Production
Database ID 50



DATABASE PERFORMANCE CSCDB_Production



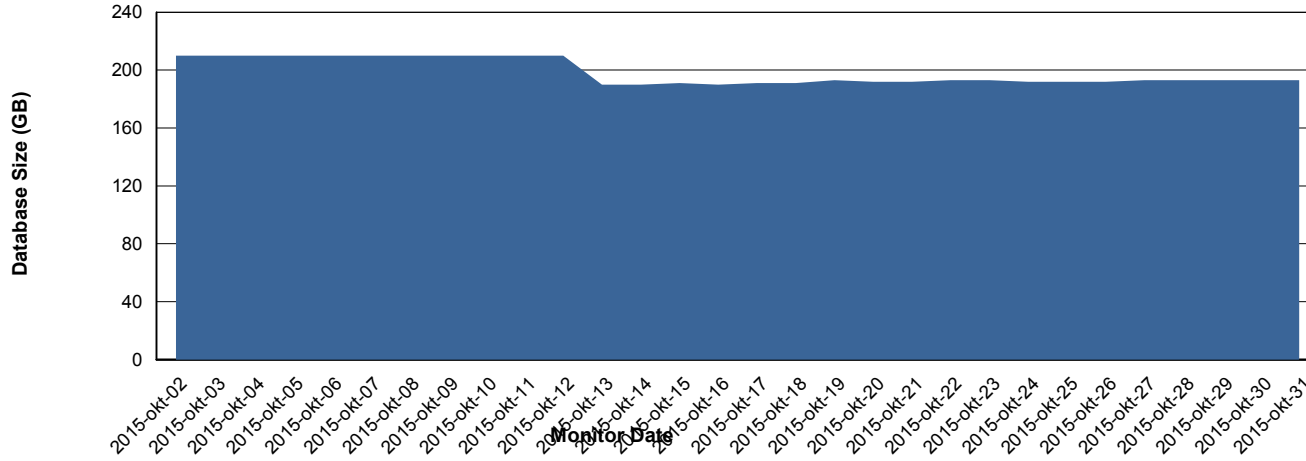
Weekly SLA Customer Report

Customer CSC_Production
 Database ID 50



=====
 DATABASE SIZE CSCDB_Production
 =====

Database growth over last month



=====
 DATABASE TABLESPACES CSCDB_Production
 =====

TOTAL DATABASE SIZE PER TABLESPACE

Date	Tablespace Name	Filesize (Gb)	Usedsize (Gb)	Percentage free
31-10-2015	ABSDATA	68	61	10
	INDX	183	130	29
30-10-2015	ABSDATA	68	61	10
	INDX	183	130	29
29-10-2015	ABSDATA	68	61	10
	INDX	183	130	29
28-10-2015	ABSDATA	68	61	10
	INDX	183	130	29
27-10-2015	ABSDATA	68	61	10
	INDX	183	130	29
26-10-2015	ABSDATA	68	61	10
	INDX	183	130	29
25-10-2015	ABSDATA	68	61	10
	INDX	183	130	29

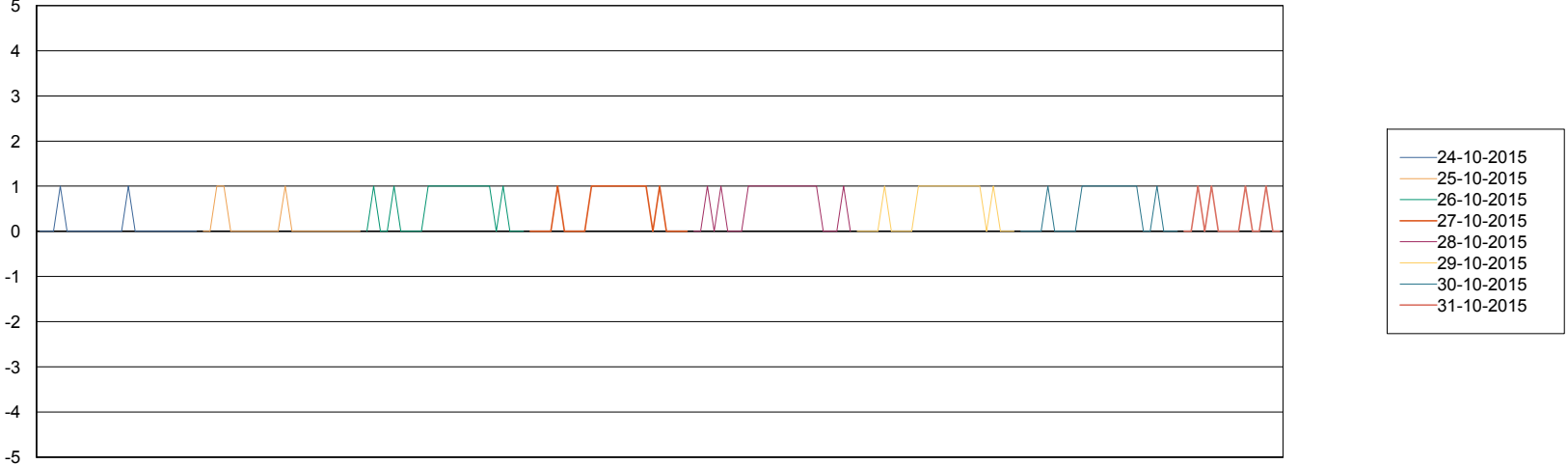
Weekly SLA Customer Report

Customer CSC_Production
Database ID 50



=====
STANDBY DATABASE HEALTH CSC_Production
=====

Recovery lag for last 7 days



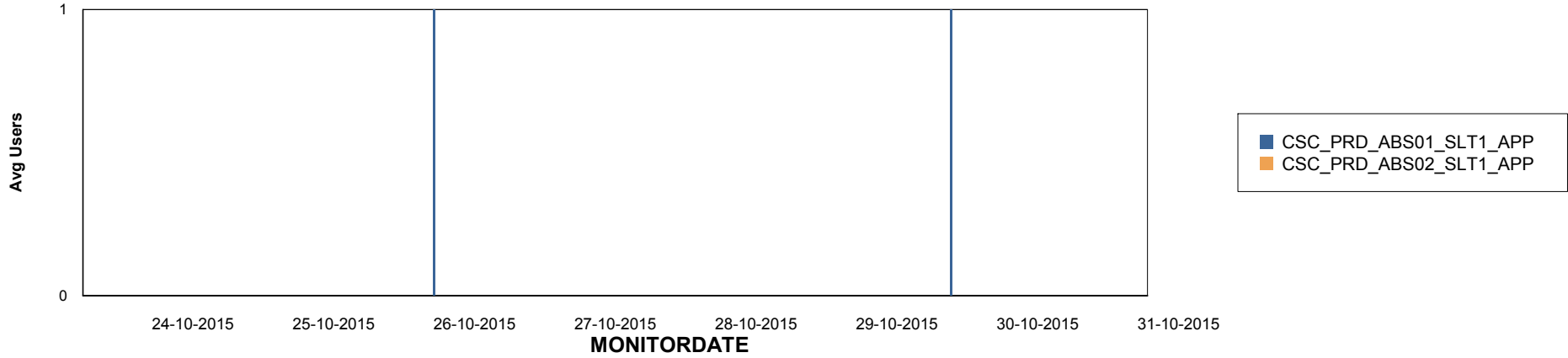
Weekly SLA Customer Report

Customer CSC_Production
Database ID 50

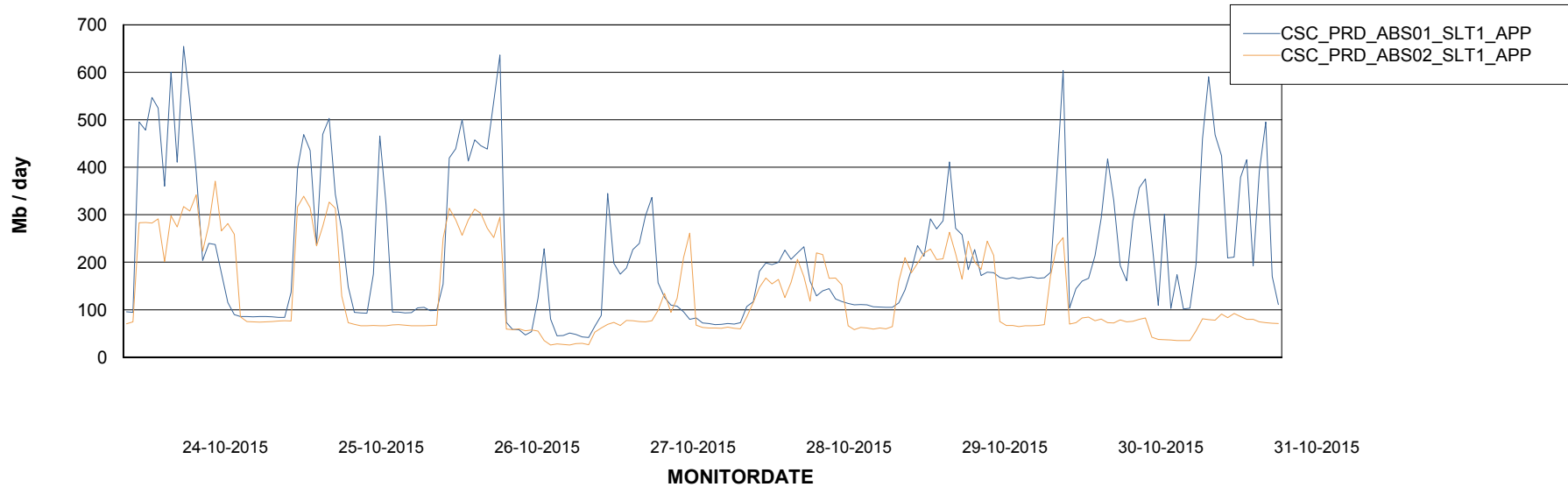


ABSolute Application Server Services

Disaster per ABS Server



Avg memory used per ABS Server Service



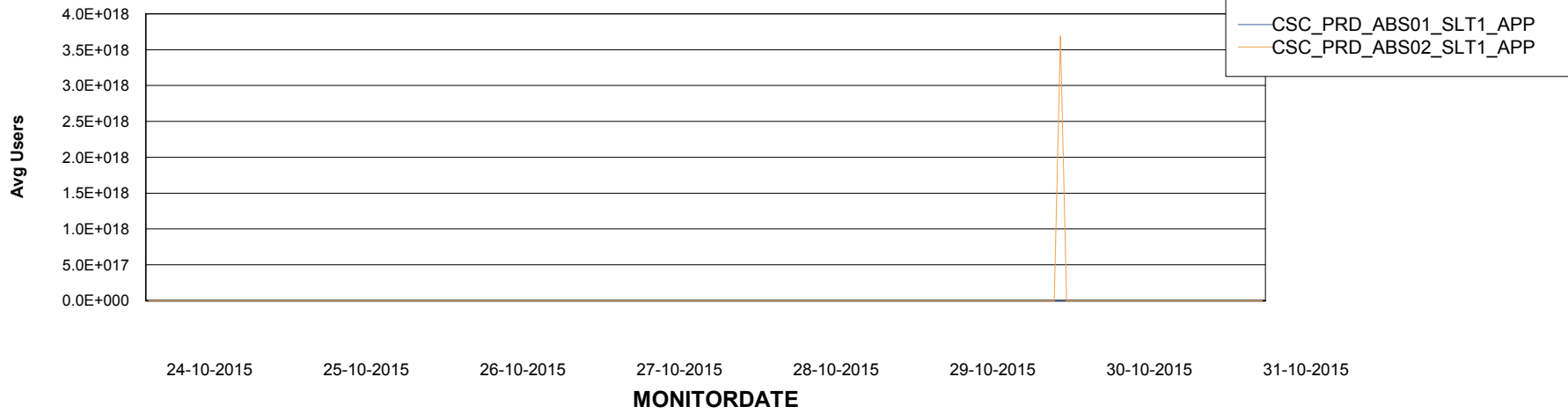
Weekly SLA Customer Report

Customer CSC_Production
Database ID 50



=====
ABSSolute Application Server Services
=====

Avg users per day per ABS server



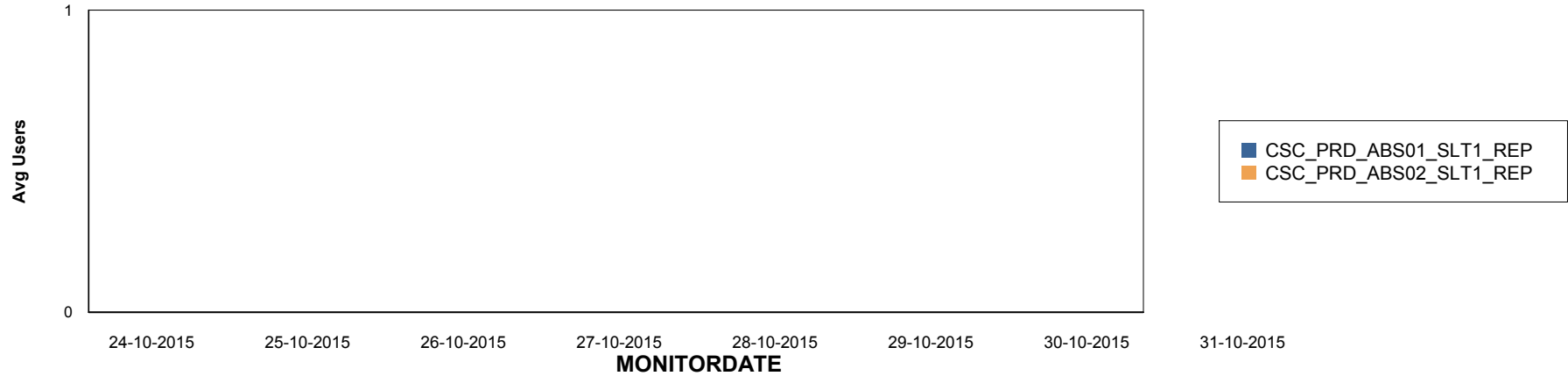
Weekly SLA Customer Report

Customer CSC_Production
Database ID 50

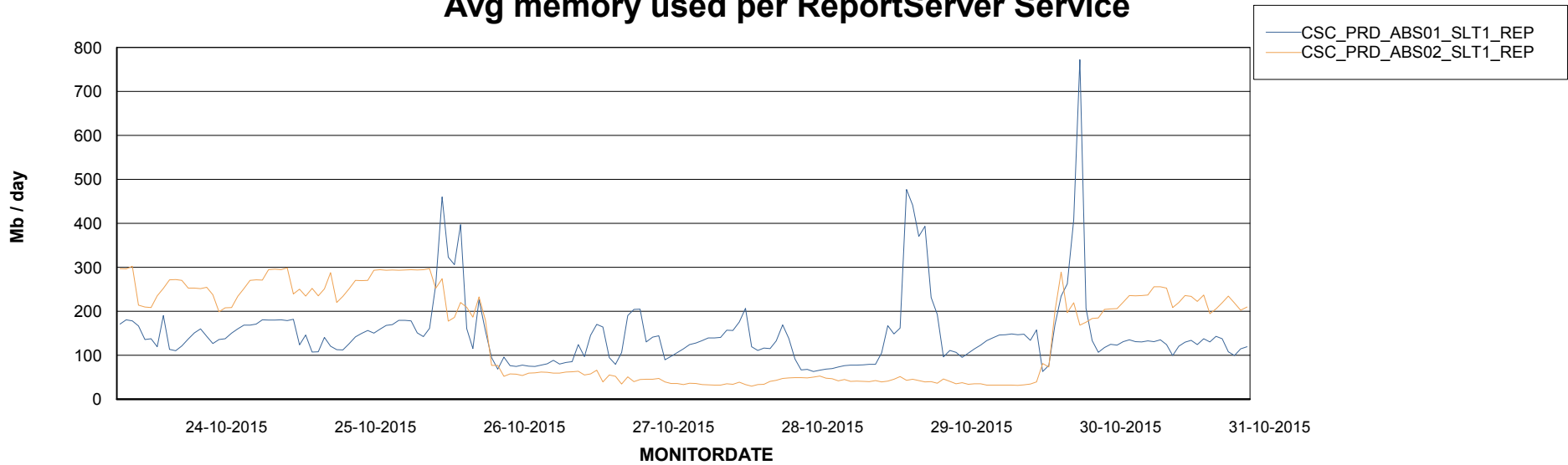


=====
ABSolute Application ReportServer Services
=====

Disaster per ReportServer



Avg memory used per ReportServer Service



Weekly SLA Customer Report

Customer CSC_Production
Database ID 50



Disaster per ABS component

