

Weekly SLA Customer Report

Customer PHS_Production
 Database ID 47



=====
 HARDDISK USAGE PHS_BI_GCAB779a
 =====

	Total disk space on C (GB)	Free disk space on C (GB)	Total disk space on D (GB)	Free disk space on D (GB)
24-10-2015	150	35	150	43
23-10-2015	150	35	150	43
22-10-2015	150	35	150	43
21-10-2015	150	35	150	43
20-10-2015	150	35	150	43
19-10-2015	150	35	150	43
18-10-2015	150	35	150	43

=====
 HARDDISK USAGE PHS_PRD_GCAB775a
 =====

	Total disk space on C (GB)	Free disk space on C (GB)	Total disk space on D (GB)	Free disk space on D (GB)	Total disk space on F (GB)	Free disk space on F (GB)
24-10-2015	220	45	75	13	80	71
23-10-2015	220	45	75	14	80	64
22-10-2015	220	45	75	14	80	64
21-10-2015	220	45	75	15	80	58
20-10-2015	220	45	75	15	80	61
19-10-2015	220	45	75	18	80	59
18-10-2015	220	45	75	22	80	58

Weekly SLA Customer Report

Customer PHS_Production
 Database ID 47



=====
 HARDDISK USAGE PHS_PRD_GCAB814a
 =====

	Total disk space on C (GB)	Free disk space on C (GB)	Total disk space on D (GB)	Free disk space on D (GB)
24-10-2015	200	34	75	14
23-10-2015	200	34	75	14
22-10-2015	200	35	75	14
21-10-2015	200	35	75	15
20-10-2015	200	35	75	15
19-10-2015	200	35	75	18
18-10-2015	200	35	75	22

=====
 HARDDISK USAGE PHS_TST_GCAB778a
 =====

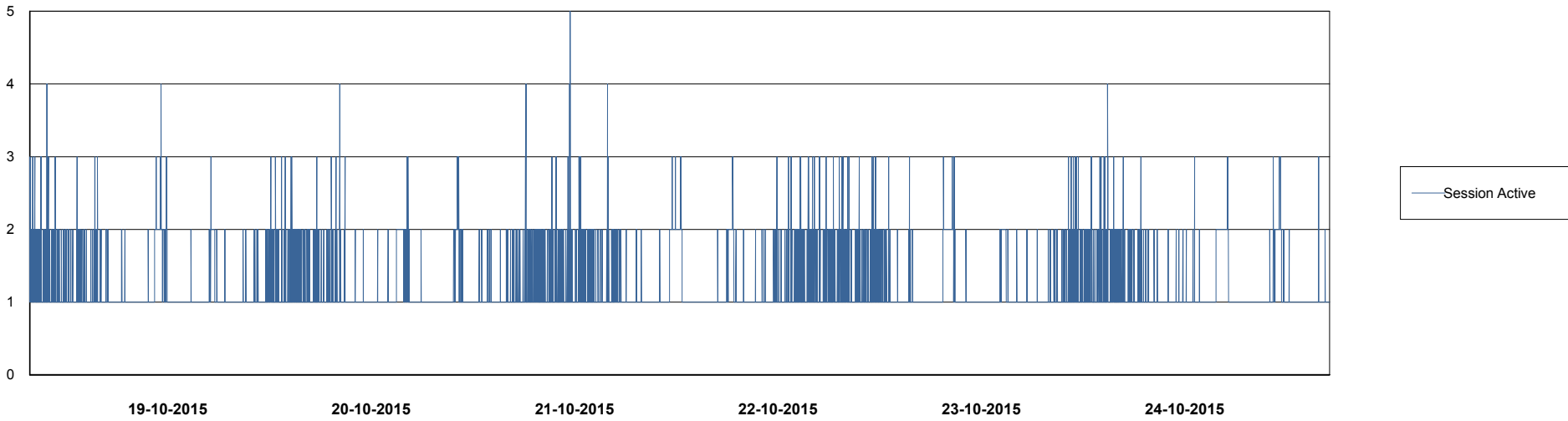
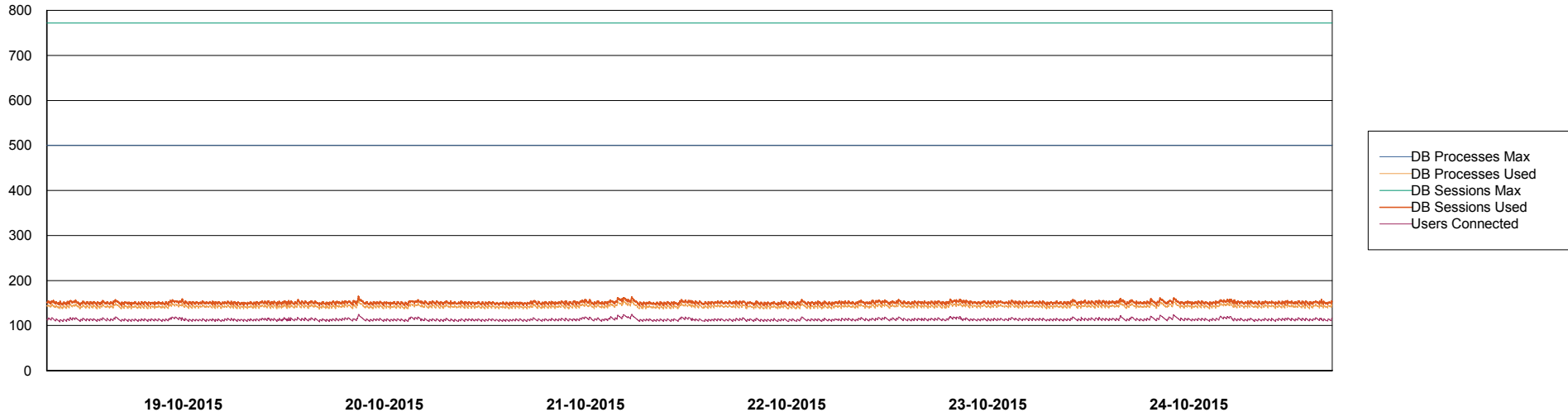
	Total disk space on C (GB)	Free disk space on C (GB)	Total disk space on D (GB)	Free disk space on D (GB)
24-10-2015	170	30	75	38
23-10-2015	170	30	75	38
22-10-2015	170	30	75	38
21-10-2015	170	30	75	38
20-10-2015	170	30	75	38
19-10-2015	170	30	75	38
18-10-2015	170	30	75	38

Weekly SLA Customer Report

Customer PHS_Production
Database ID 47



DATABASE PERFORMANCE PHSDB_Production



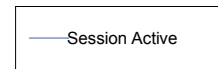
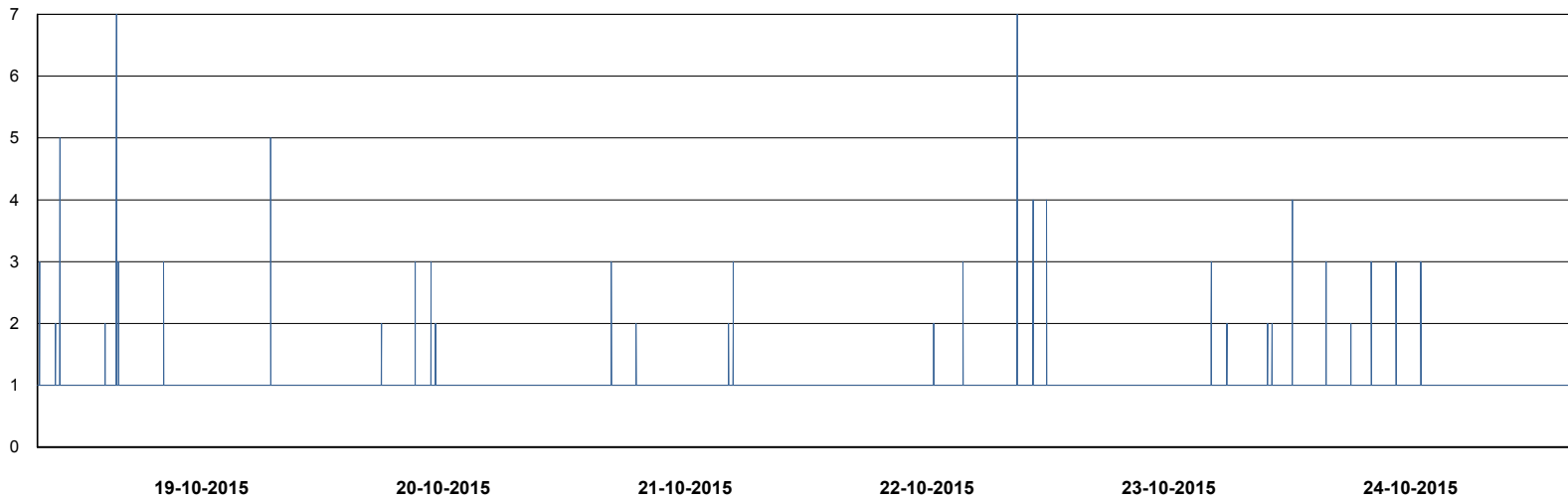
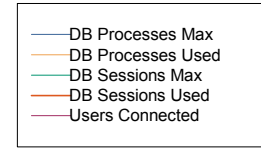
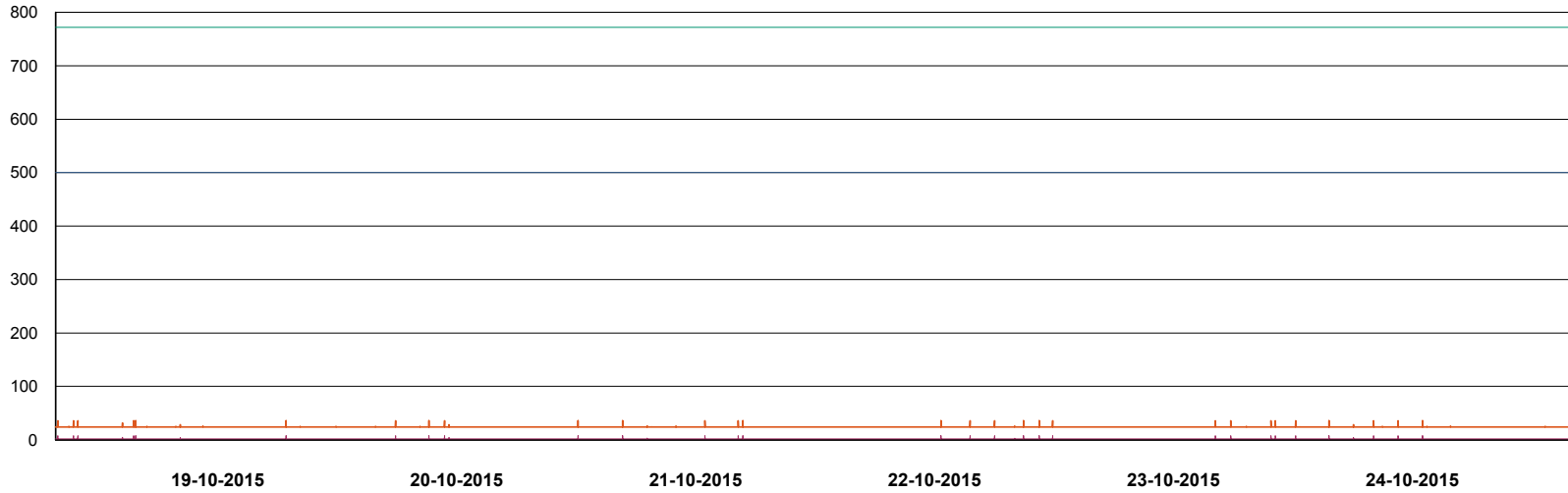
Weekly SLA Customer Report

Customer PHS_Production
Database ID 47



DATABASE PERFORMANCE

PHSDB_Standby



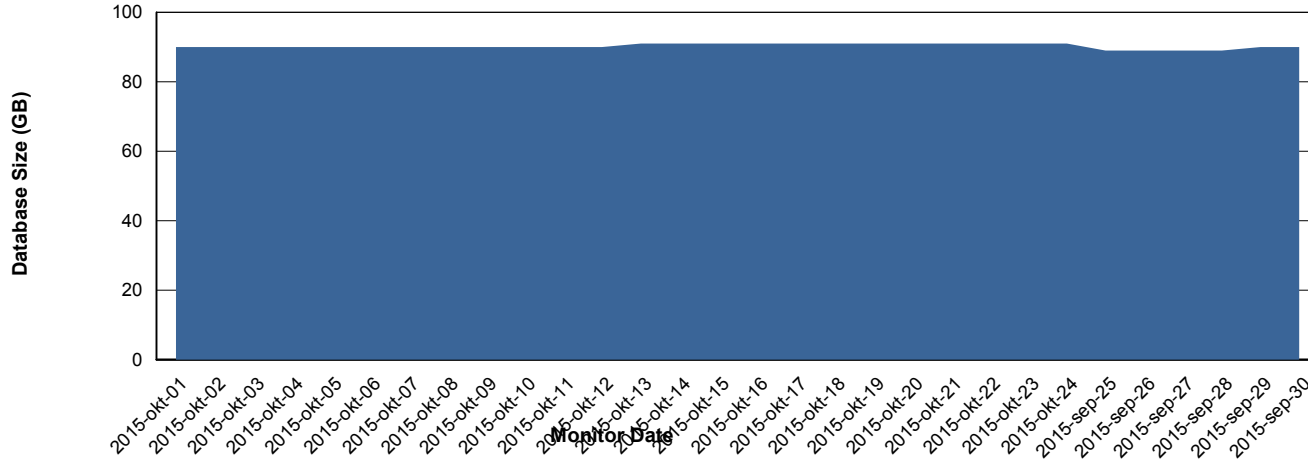
Weekly SLA Customer Report

Customer PHS_Production
 Database ID 47



=====
 DATABASE SIZE PHSDB_Production
 =====

Database growth over last month



=====
 DATABASE TABLESPACES PHSDB_Production
 =====

TOTAL DATABASE SIZE PER TABLESPACE

Date	Tablespace Name	Filesize (Gb)	Usedsize (Gb)	Percentage free
24-10-2015	ABSDATA	104	89	14
	INDX	2	0	100
23-10-2015	ABSDATA	104	89	14
	INDX	2	0	100
22-10-2015	ABSDATA	104	89	14
	INDX	2	0	100
21-10-2015	ABSDATA	104	89	14
	INDX	2	0	100
20-10-2015	ABSDATA	104	89	14
	INDX	2	0	100
19-10-2015	ABSDATA	104	89	14
	INDX	2	0	100
18-10-2015	ABSDATA	104	88	15
	INDX	2	0	100

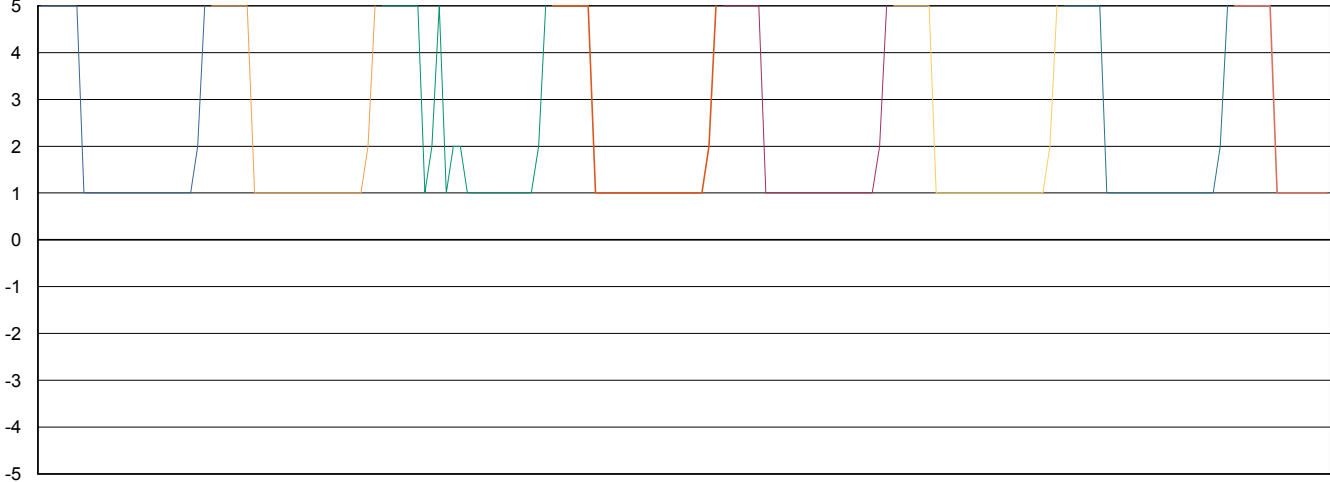
Weekly SLA Customer Report

Customer PHS_Production
Database ID 47



=====
STANDBY DATABASE HEALTH PHS_Production
=====

Recovery lag for last 7 days



- 17-10-2015
- 18-10-2015
- 19-10-2015
- 20-10-2015
- 21-10-2015
- 22-10-2015
- 23-10-2015
- 24-10-2015

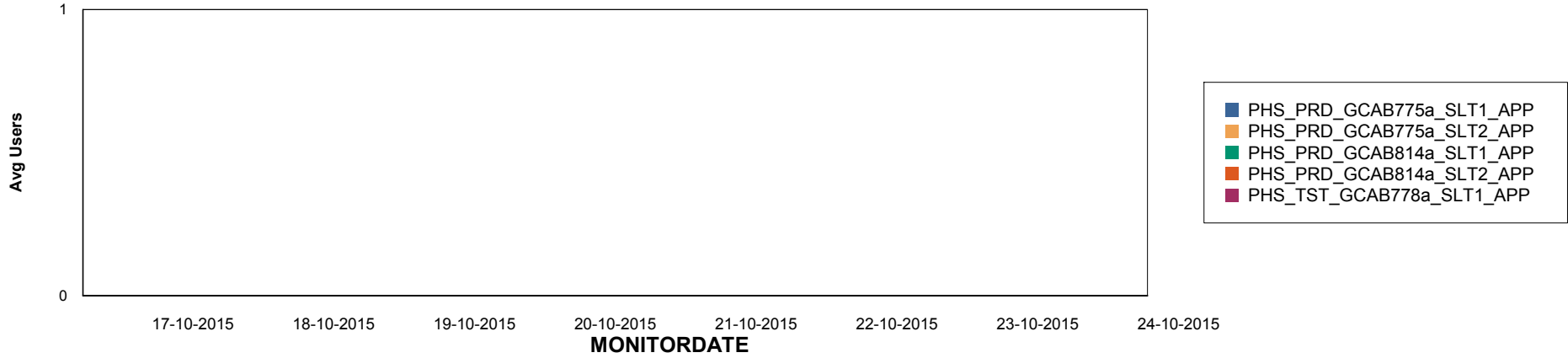
Weekly SLA Customer Report

Customer PHS_Production
Database ID 47

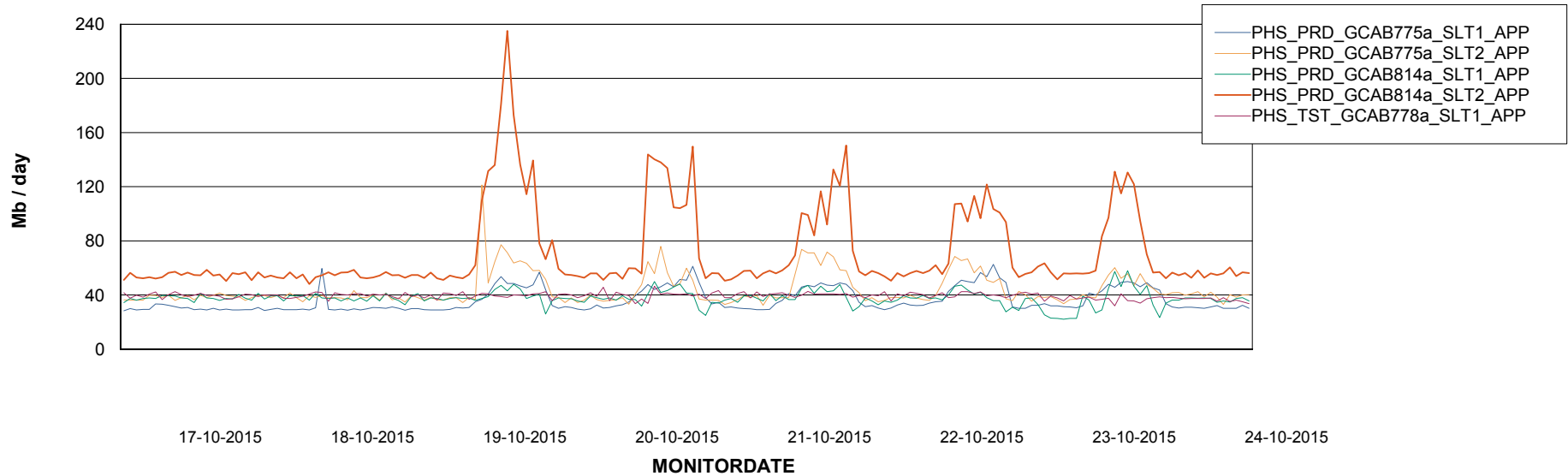


=====
ABSolute Application Server Services
=====

Disaster per ABS Server



Avg memory used per ABS Server Service



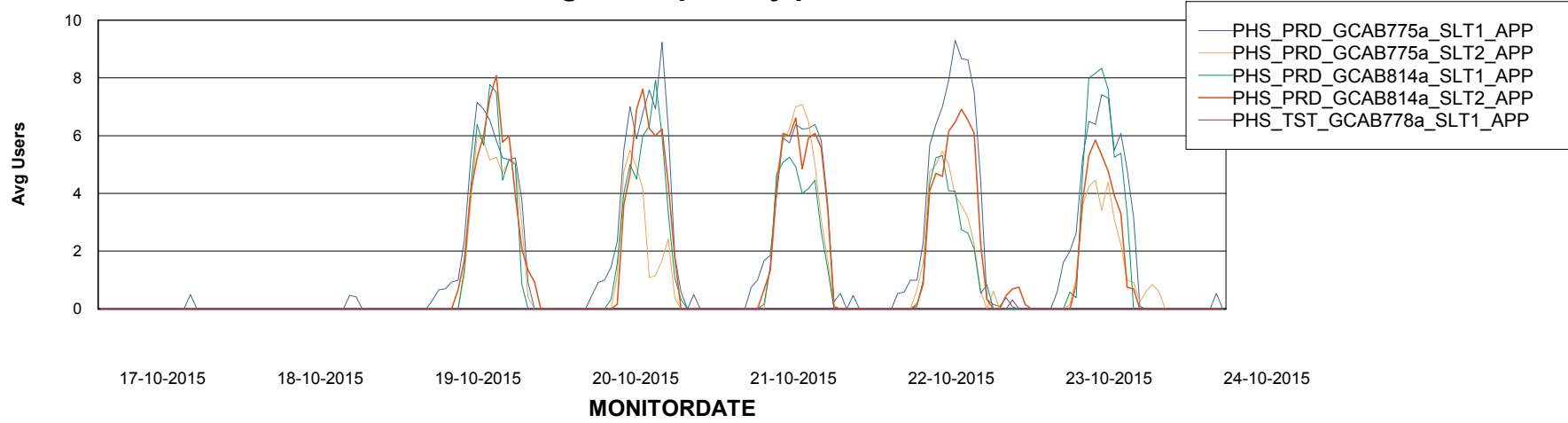
Weekly SLA Customer Report

Customer PHS_Production
Database ID 47



=====
ABSolute Application Server Services
=====

Avg users per day per ABS server



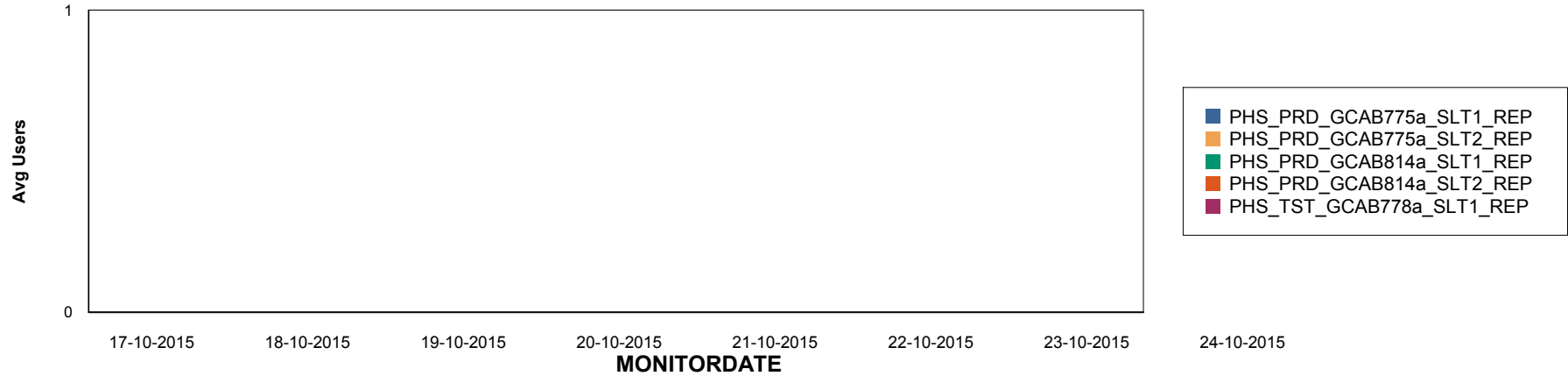
Weekly SLA Customer Report

Customer PHS_Production
Database ID 47

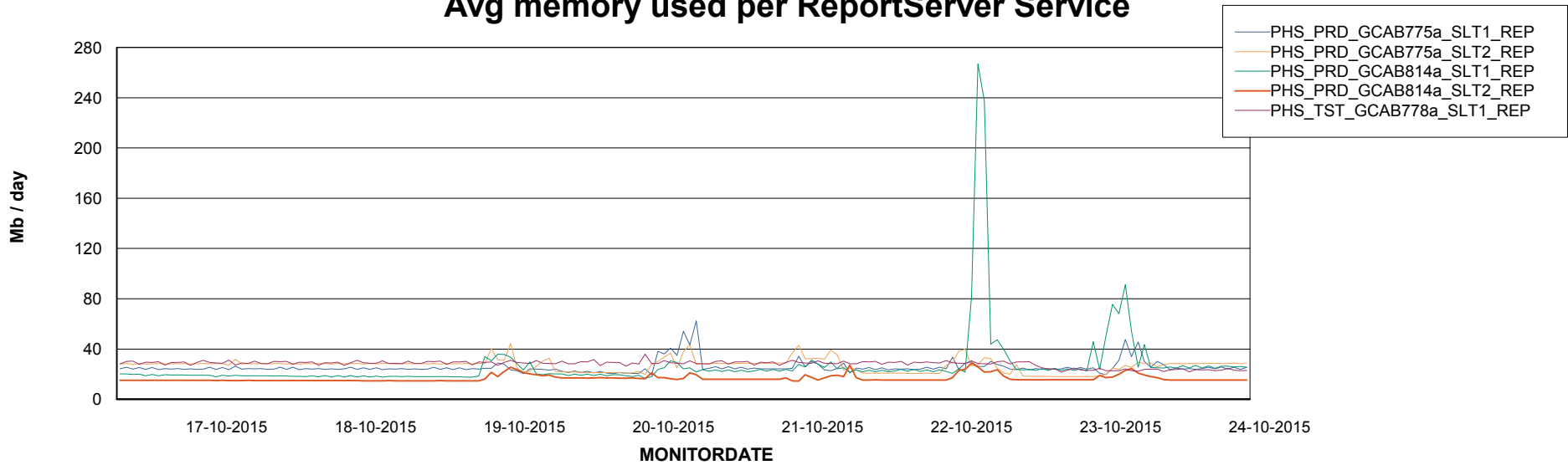


=====
ABSolute Application ReportServer Services
=====

Disaster per ReportServer



Avg memory used per ReportServer Service

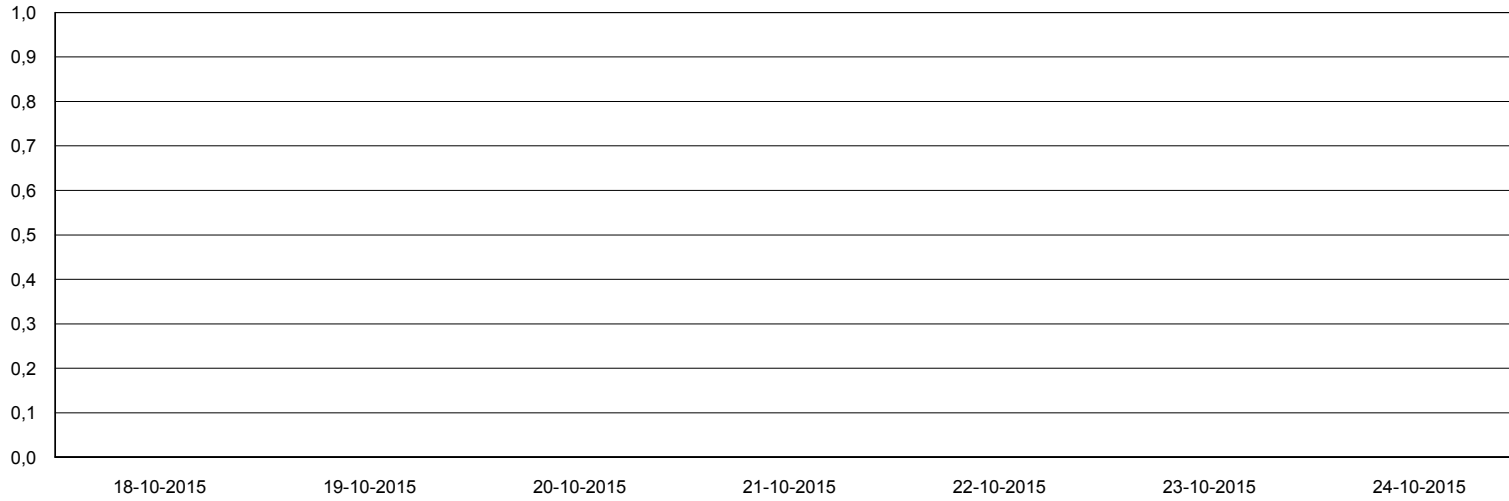


Weekly SLA Customer Report

Customer PHS_Production
Database ID 47



Disaster per ABS component



- PHS_PRD_GCAB775a_SLT1_APP
- PHS_PRD_GCAB775a_SLT1_REP
- PHS_PRD_GCAB775a_SLT2_APP
- PHS_PRD_GCAB775a_SLT2_REP
- PHS_PRD_GCAB814a_SLT1_APP
- PHS_PRD_GCAB814a_SLT1_REP
- PHS_PRD_GCAB814a_SLT2_APP
- PHS_PRD_GCAB814a_SLT2_REP
- PHS_TST_GCAB778a_SLT1_APP
- PHS_TST_GCAB778a_SLT1_REP