

Weekly SLA Customer Report

Customer PCO Production
 Database ID 44



=====
 HARDDISK USAGE PCO_PRD_ORACLE1
 =====

	Total disk space on C (GB)	Free disk space on C (GB)	Total disk space on D (GB)	Free disk space on D (GB)
24-10-2015	279	217	838	137
23-10-2015	279	217	838	139
22-10-2015	279	217	838	141
21-10-2015	279	217	838	144
20-10-2015	279	217	838	147
19-10-2015	279	217	838	150
18-10-2015	279	217	838	151

=====
 HARDDISK USAGE PCO_PRD_ORACLE2
 =====

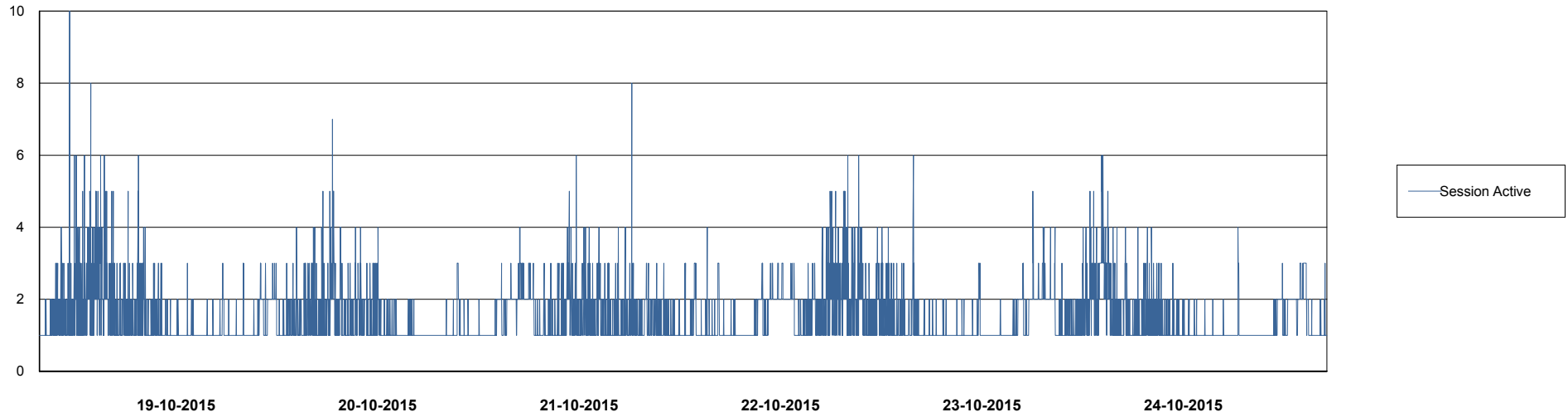
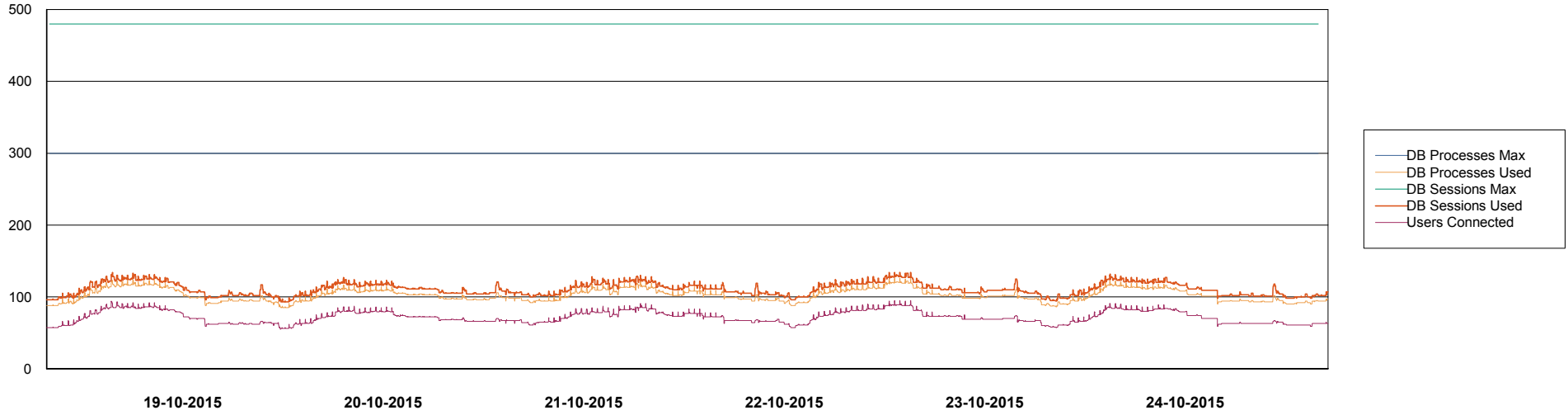
	Total disk space on C (GB)	Free disk space on C (GB)	Total disk space on D (GB)	Free disk space on D (GB)
24-10-2015	279	218	838	504
23-10-2015	279	219	838	506
22-10-2015	279	219	838	509
21-10-2015	279	219	838	511
20-10-2015	279	219	838	514
19-10-2015	279	219	838	517
18-10-2015	279	219	838	518

Weekly SLA Customer Report

Customer PCO Production
Database ID 44



DATABASE PERFORMANCE PCODB_Production



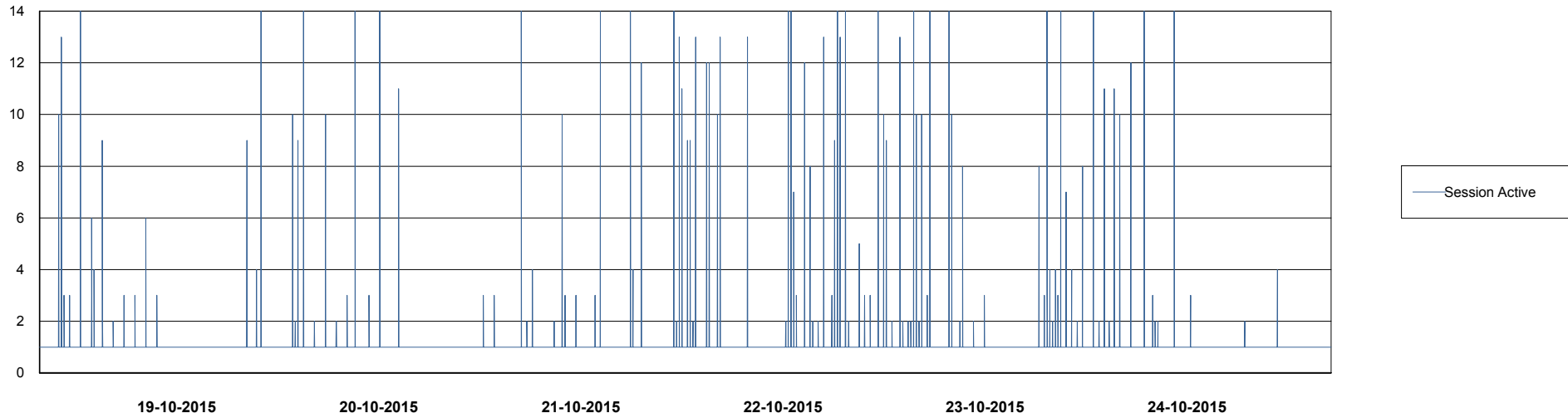
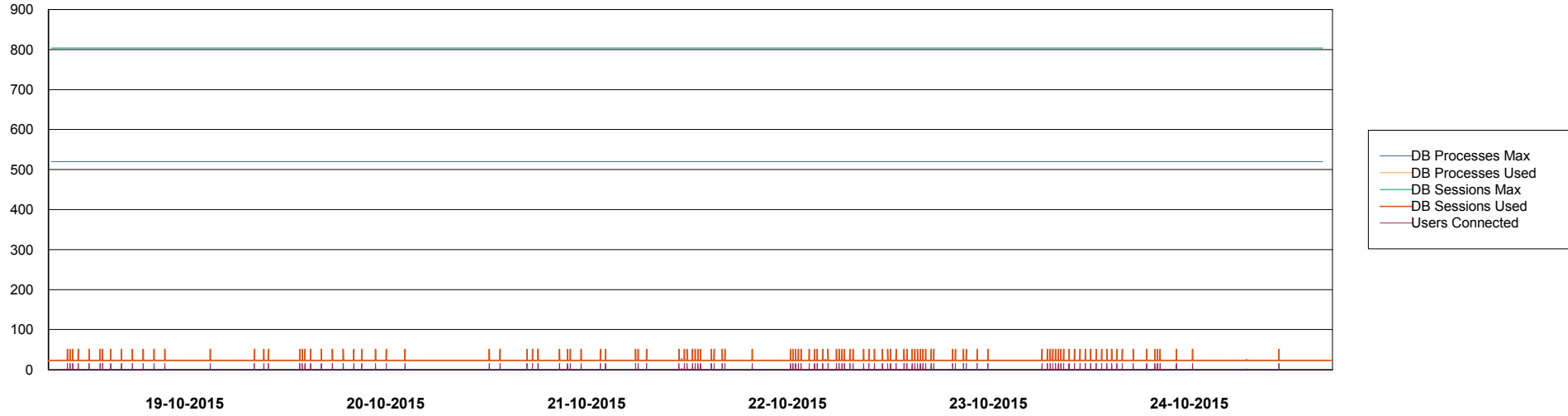
Weekly SLA Customer Report

Customer PCO Production
Database ID 44



DATABASE PERFORMANCE

PCODB_Standby



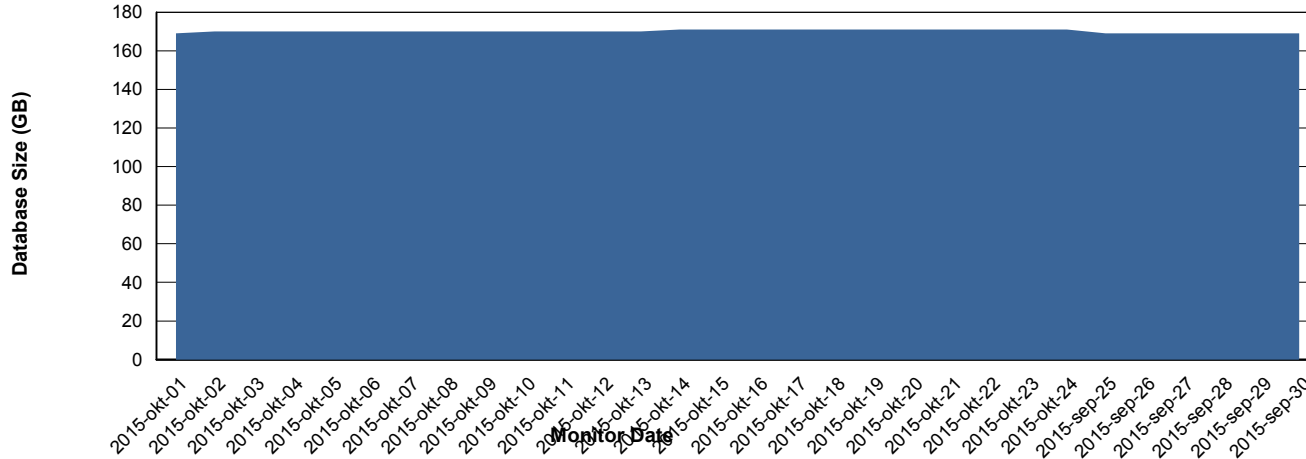
Weekly SLA Customer Report

Customer PCO Production
 Database ID 44



=====
 DATABASE SIZE PCODB_Production
 =====

Database growth over last month



=====
 DATABASE TABLESPACES PCODB_Production
 =====

TOTAL DATABASE SIZE PER TABLESPACE

Date	Tablespace Name	Filesize (Gb)	Usedsize (Gb)	Percentage free
24-10-2015	ABSDATA	81	66	19
	INDX	125	104	17
23-10-2015	ABSDATA	81	66	19
	INDX	125	104	17
22-10-2015	ABSDATA	81	66	19
	INDX	125	104	17
21-10-2015	ABSDATA	81	66	19
	INDX	125	104	17
20-10-2015	ABSDATA	81	66	19
	INDX	125	103	18
19-10-2015	ABSDATA	81	66	19
	INDX	125	103	18
18-10-2015	ABSDATA	81	66	19
	INDX	125	103	18

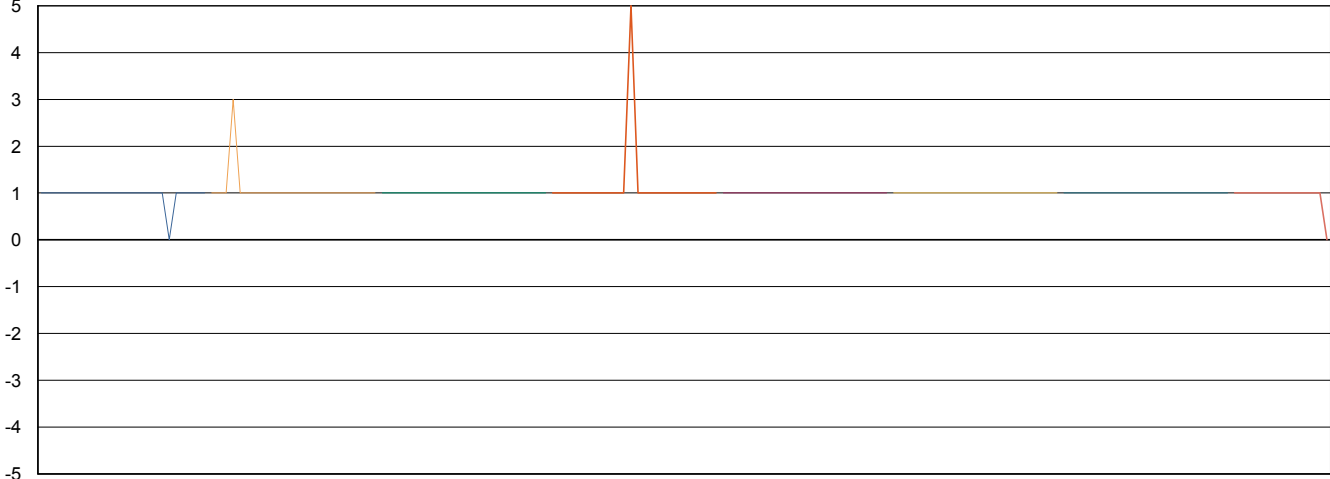
Weekly SLA Customer Report

Customer PCO Production
Database ID 44



=====
STANDBY DATABASE HEALTH PCO Production
=====

Recovery lag for last 7 days



- 17-10-2015
- 18-10-2015
- 19-10-2015
- 20-10-2015
- 21-10-2015
- 22-10-2015
- 23-10-2015
- 24-10-2015