

# Weekly SLA Customer Report

Customer NIX\_Production  
 Database ID 51



=====  
 HARDDISK USAGE NIX\_PRD\_ABSAPP1  
 =====

	Total disk space on C (GB)	Free disk space on C (GB)
24-10-2015	200	176
23-10-2015	200	176
22-10-2015	200	176
21-10-2015	200	176
20-10-2015	200	176
19-10-2015	200	176
18-10-2015	200	176

=====  
 HARDDISK USAGE NIX\_PRD\_ABSAPP2  
 =====

	Total disk space on C (GB)	Free disk space on C (GB)
24-10-2015	200	176
23-10-2015	200	176
22-10-2015	200	176
21-10-2015	200	176
20-10-2015	200	176
19-10-2015	200	176
18-10-2015	200	177

# Weekly SLA Customer Report

Customer NIX\_Production  
 Database ID 51



=====  
 HARDDISK USAGE NIX\_PRD\_ABSWEB01  
 =====

	Total disk space on C (GB)	Free disk space on C (GB)
24-10-2015	300	281
23-10-2015	300	281
22-10-2015	300	281
21-10-2015	300	282
20-10-2015	300	282
19-10-2015	300	282
18-10-2015	300	282

=====  
 HARDDISK USAGE NIX\_PRD\_ORACLE\_B11  
 =====

	Total disk space on C (GB)	Free disk space on C (GB)	Total disk space on E (GB)	Free disk space on E (GB)	Total disk space on F (GB)	Free disk space on F (GB)	Total disk space on G (GB)	Free disk space on G (GB)
24-10-2015	279	203	558	387	558	457	279	235
23-10-2015	279	203	558	387	558	458	279	235
22-10-2015	279	203	558	387	558	458	279	235
21-10-2015	279	203	558	387	558	458	279	235
20-10-2015	279	203	558	387	558	458	279	235
19-10-2015	279	203	558	387	558	458	279	235
18-10-2015	279	203	558	387	558	458	279	235

## Weekly SLA Customer Report

Customer      NIX\_Production  
 Database ID    51



=====

HARDDISK USAGE    NIX\_PRD\_ORCDB1

=====

	Total disk space on C (GB)	Free disk space on C (GB)	Total disk space on E (GB)	Free disk space on E (GB)	Total disk space on F (GB)	Free disk space on F (GB)	Total disk space on G (GB)	Free disk space on G (GB)
24-10-2015	279	94	558	492	558	457	279	108
23-10-2015	279	94	558	492	558	457	279	109
22-10-2015	279	94	558	492	558	457	279	112
21-10-2015	279	94	558	492	558	457	279	114
20-10-2015	279	94	558	492	558	457	279	116
19-10-2015	279	94	558	492	558	457	279	119
18-10-2015	279	94	558	492	558	457	279	120

=====

HARDDISK USAGE    NIX\_PRD\_ORCDB2

=====

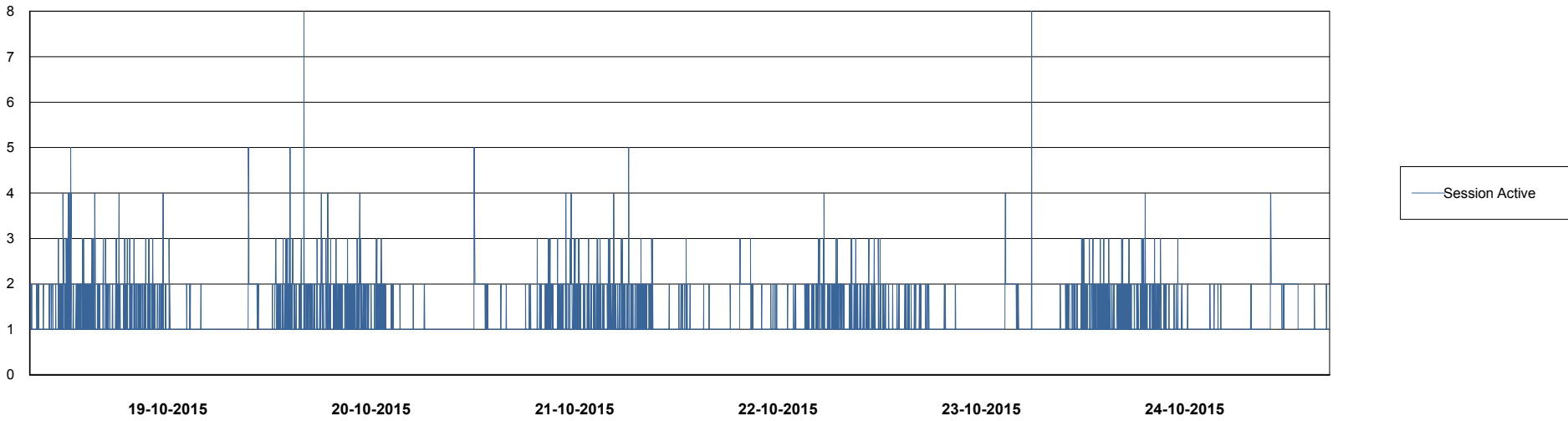
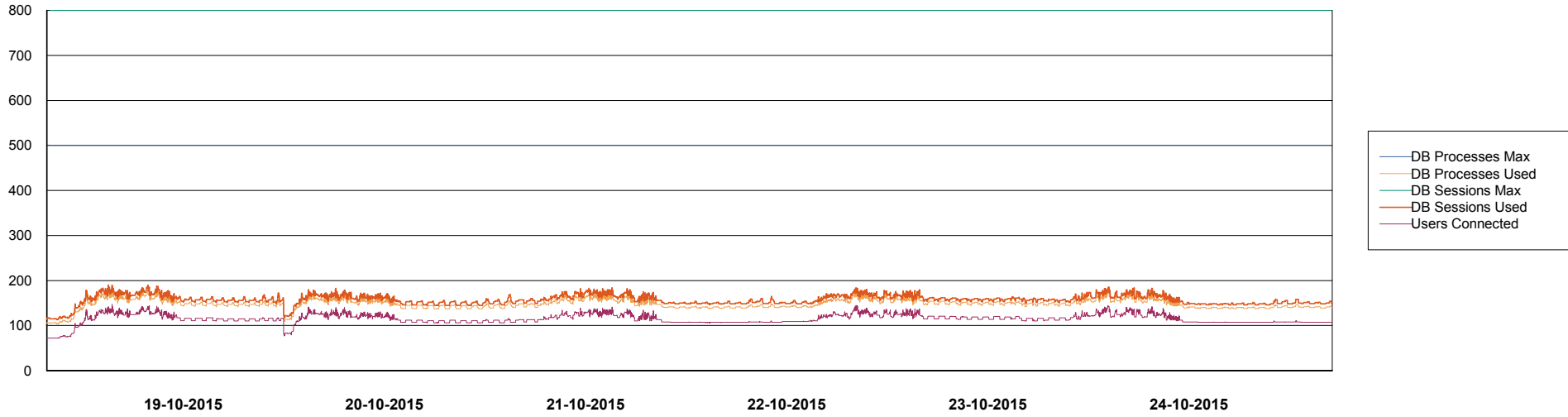
	Total disk space on C (GB)	Free disk space on C (GB)	Total disk space on E (GB)	Free disk space on E (GB)	Total disk space on F (GB)	Free disk space on F (GB)	Total disk space on G (GB)	Free disk space on G (GB)
24-10-2015	279	236	558	399	558	457	279	24
23-10-2015	279	236	558	400	558	457	279	25
22-10-2015	279	236	558	400	558	457	279	27
21-10-2015	279	237	558	401	558	457	279	29
20-10-2015	279	237	558	401	558	457	279	32
19-10-2015	279	237	558	401	558	457	279	34
18-10-2015	279	237	558	401	558	457	279	35

# Weekly SLA Customer Report

Customer NIX\_Production  
Database ID 51



## DATABASE PERFORMANCE NIXDB\_Production



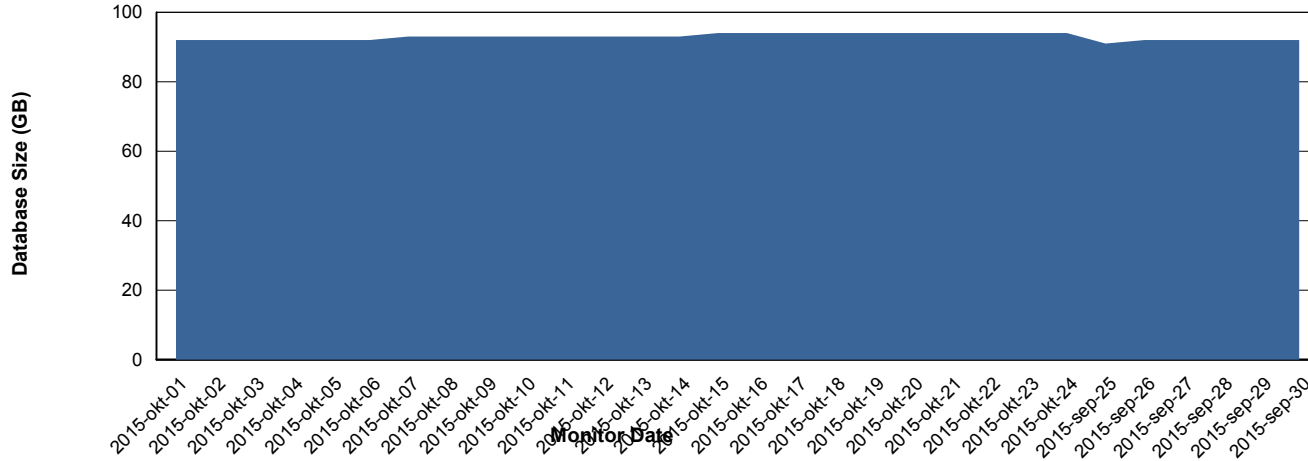
# Weekly SLA Customer Report

Customer NIX\_Production  
 Database ID 51



=====  
 DATABASE SIZE NIXDB\_Production  
 =====

## Database growth over last month



=====  
 DATABASE TABLESPACES NIXDB\_Production  
 =====

### TOTAL DATABASE SIZE PER TABLESPACE

Date	Tablespace Name	Filesize (Gb)	Usedsize (Gb)	Percentage free
24-10-2015	ABSDATA	50	36	28
	INDX	100	57	43
23-10-2015	ABSDATA	50	36	28
	INDX	100	57	43
22-10-2015	ABSDATA	50	36	28
	INDX	100	57	43
21-10-2015	ABSDATA	50	36	28
	INDX	100	57	43
20-10-2015	ABSDATA	50	36	28
	INDX	100	57	43
19-10-2015	ABSDATA	50	36	28
	INDX	100	57	43
18-10-2015	ABSDATA	50	36	28
	INDX	100	57	43

# Weekly SLA Customer Report

---

Customer NIX\_Production  
Database ID 51



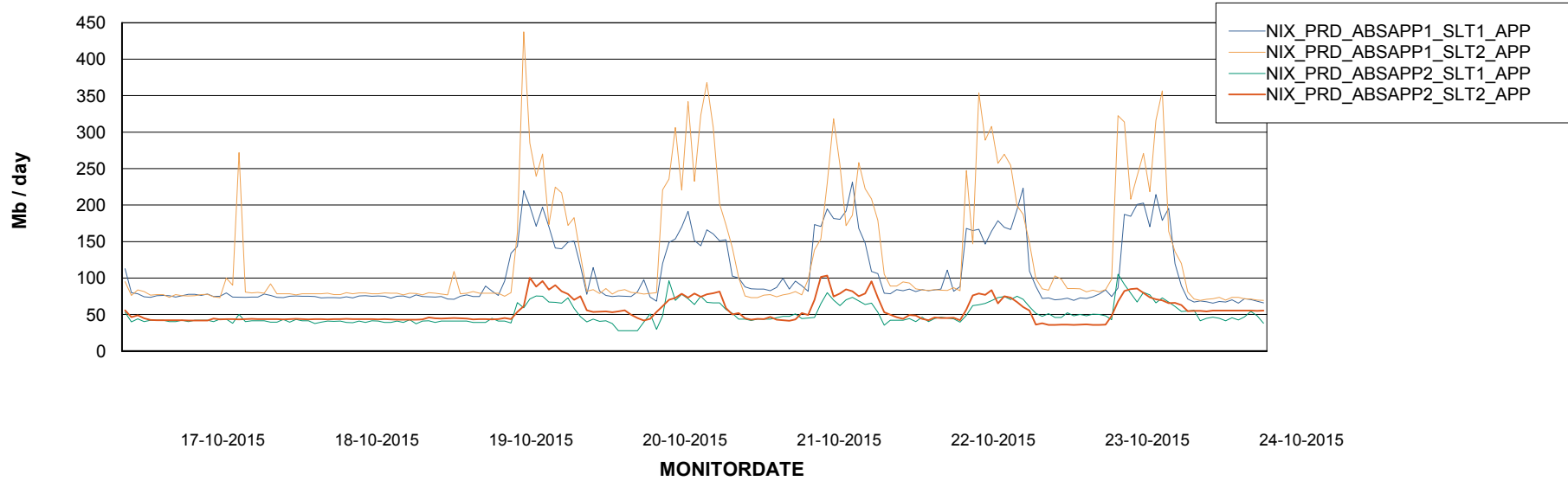
# Weekly SLA Customer Report

Customer NIX\_Production  
Database ID 51



=====  
ABSSolute Application Server Services  
=====

### Avg memory used per ABS Server Service



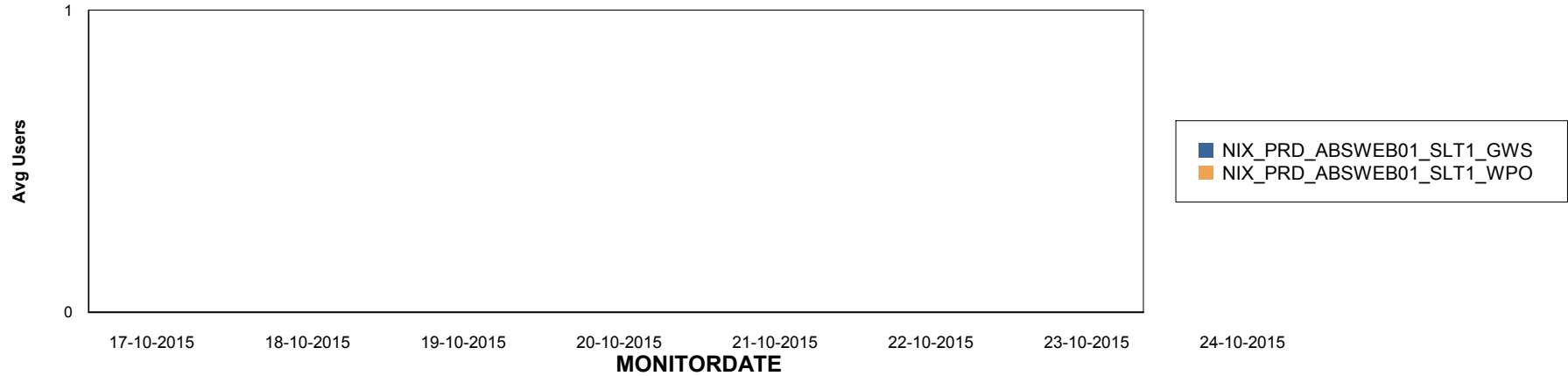
# Weekly SLA Customer Report

Customer NIX\_Production  
Database ID 51

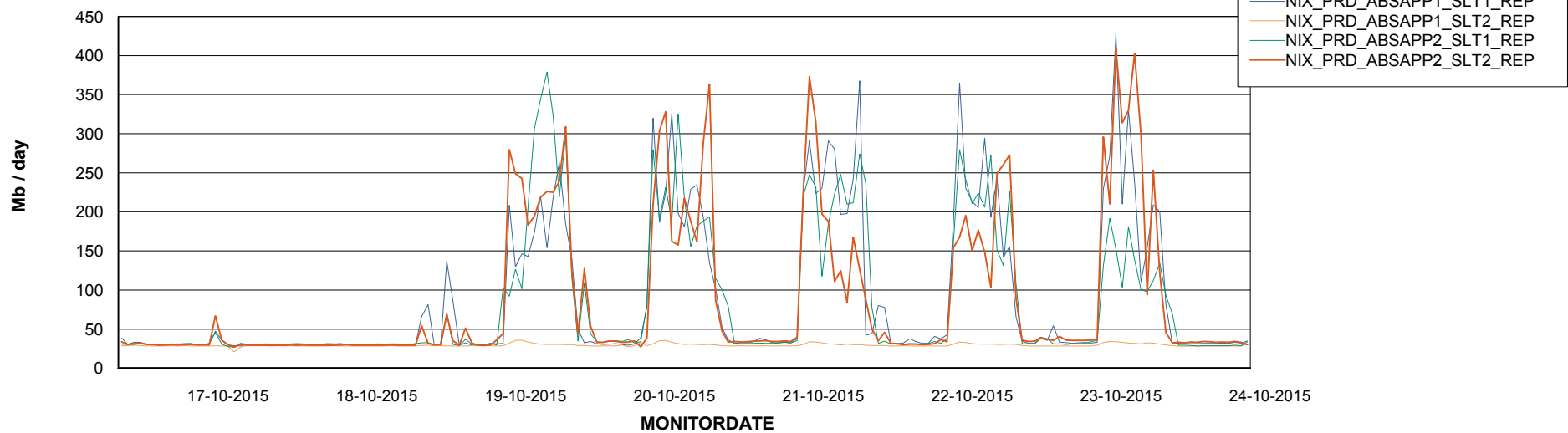


=====  
ABSolute Application ReportServer Services  
=====

## Disaster per ReportServer



## Avg memory used per ReportServer Service



# Weekly SLA Customer Report

Customer NIX\_Production  
Database ID 51



## Disaster per ABS component

