

Weekly SLA Customer Report

Customer JWR Production
 Database ID 43



=====
 HARDDISK USAGE JWR_PRD_JWR-ABS-01
 =====

	Used disk space on / (GB)	Total disk space on / (GB)	Free disk space on / (GB)
24-10-2015	29	49	18
23-10-2015	29	49	18
22-10-2015	29	49	17
21-10-2015	29	49	17
20-10-2015	32	49	15
19-10-2015	30	49	17
18-10-2015	29	49	18

=====
 HARDDISK USAGE JWR_PRD_JWR-ABS-02
 =====

	Used disk space on / (GB)	Total disk space on / (GB)	Free disk space on / (GB)
24-10-2015	34	49	13
23-10-2015	35	49	12
22-10-2015	35	49	12
21-10-2015	34	49	13
20-10-2015	34	49	13
19-10-2015	34	49	13
18-10-2015	34	49	13

Weekly SLA Customer Report

Customer JWR Production
 Database ID 43



=====
 HARDDISK USAGE JWR_PRD_JWR-ODB-01
 =====

	Used disk space on / (GB)	Total disk space on / (GB)	Free disk space on / (GB)
24-10-2015	97	148	44
23-10-2015	97	148	44
22-10-2015	97	148	44
21-10-2015	97	148	44
20-10-2015	97	148	44
19-10-2015	98	148	43
18-10-2015	97	148	44

=====
 HARDDISK USAGE JWR_PRD_JWR-ODB-02
 =====

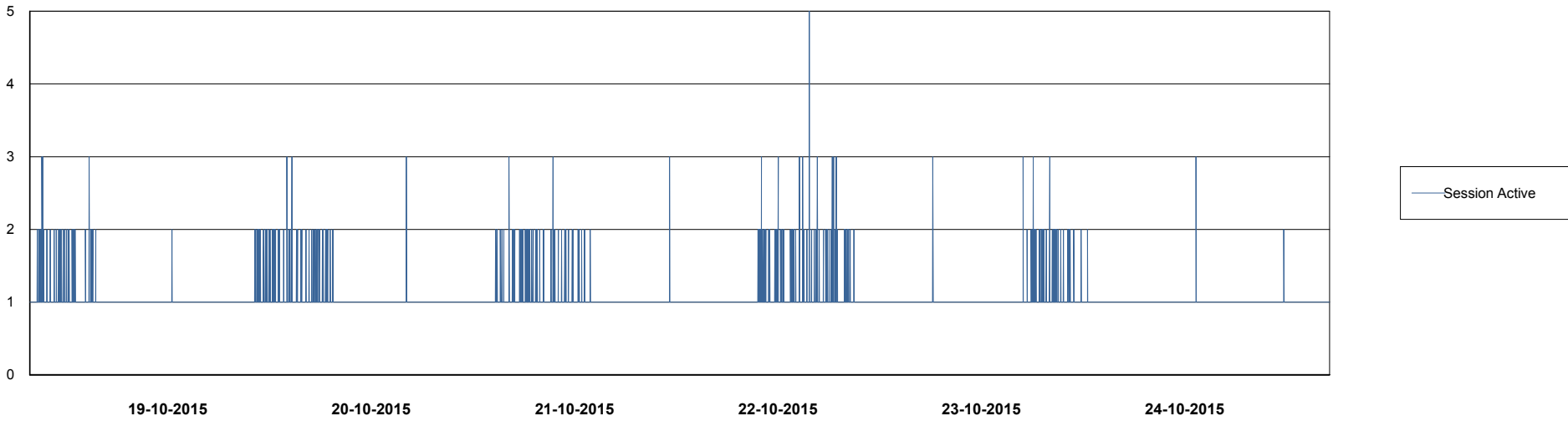
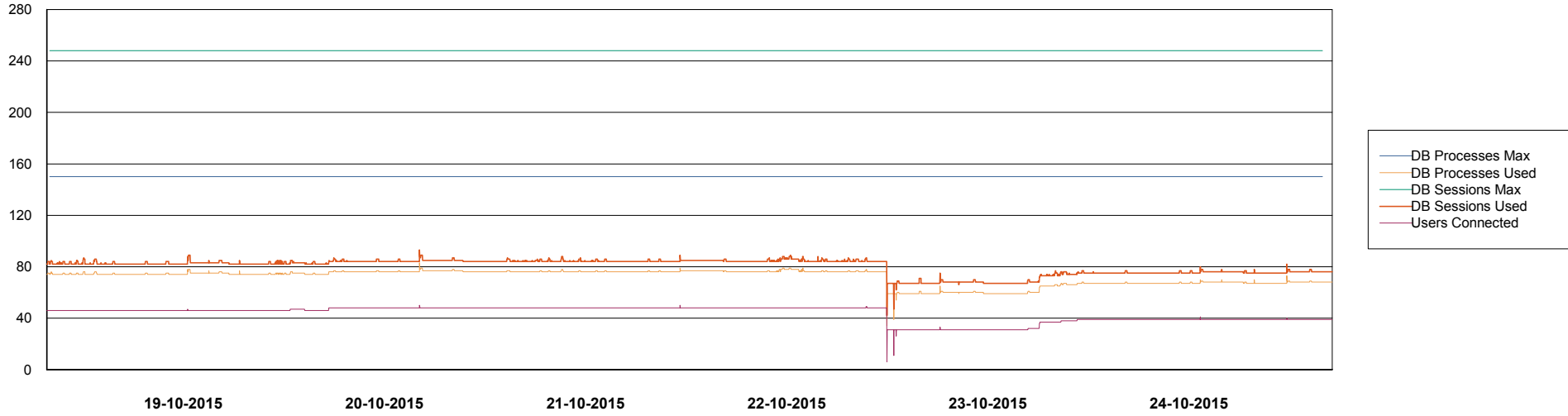
	Used disk space on / (GB)	Total disk space on / (GB)	Free disk space on / (GB)
24-10-2015	94	138	36
23-10-2015	95	138	36
22-10-2015	95	138	36
21-10-2015	95	138	36
20-10-2015	95	138	36
19-10-2015	95	138	36
18-10-2015	94	138	37

Weekly SLA Customer Report

Customer JWR Production
Database ID 43



DATABASE PERFORMANCE JWRDB_Production



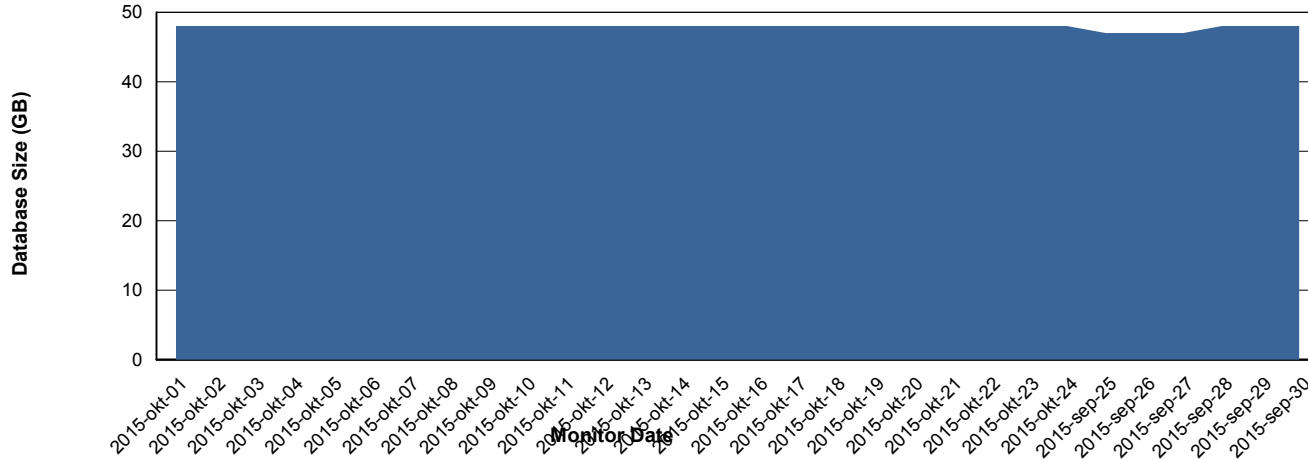
Weekly SLA Customer Report

Customer JWR Production
 Database ID 43



=====
 DATABASE SIZE JWRDB_Production
 =====

Database growth over last month



=====
 DATABASE TABLESPACES JWRDB_Production
 =====

TOTAL DATABASE SIZE PER TABLESPACE

Date	Tablespace Name	Filesize (Gb)	Usedsize (Gb)	Percentage free
24-10-2015	ABSDATA	18	13	28
	INDX	40	34	15
23-10-2015	ABSDATA	18	13	28
	INDX	40	34	15
22-10-2015	ABSDATA	18	13	28
	INDX	40	34	15
21-10-2015	ABSDATA	18	13	28
	INDX	40	34	15
20-10-2015	ABSDATA	18	13	28
	INDX	40	34	15
19-10-2015	ABSDATA	18	13	28
	INDX	40	34	15
18-10-2015	ABSDATA	18	13	28
	INDX	40	34	15

Weekly SLA Customer Report

Customer JWR Production
Database ID 43



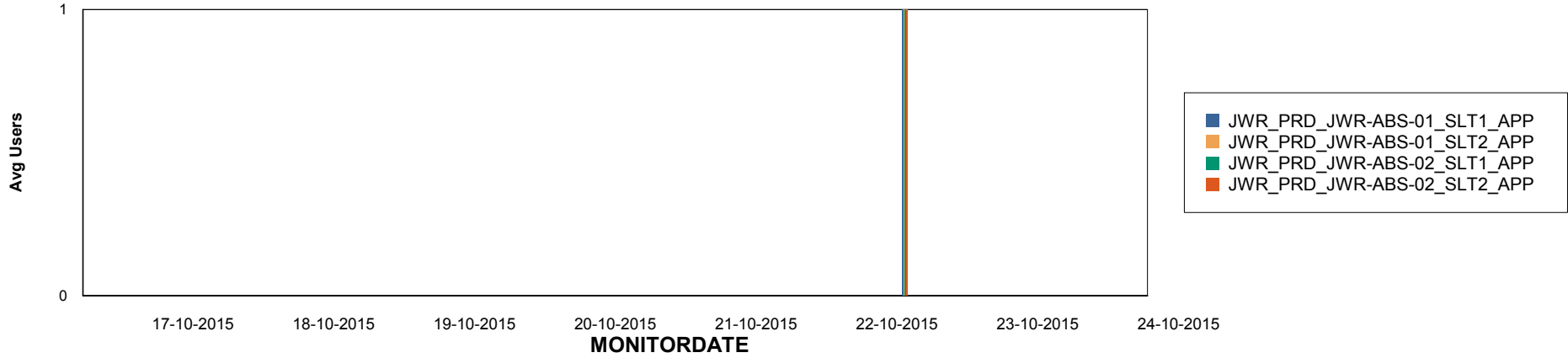
Weekly SLA Customer Report

Customer JWR Production
Database ID 43

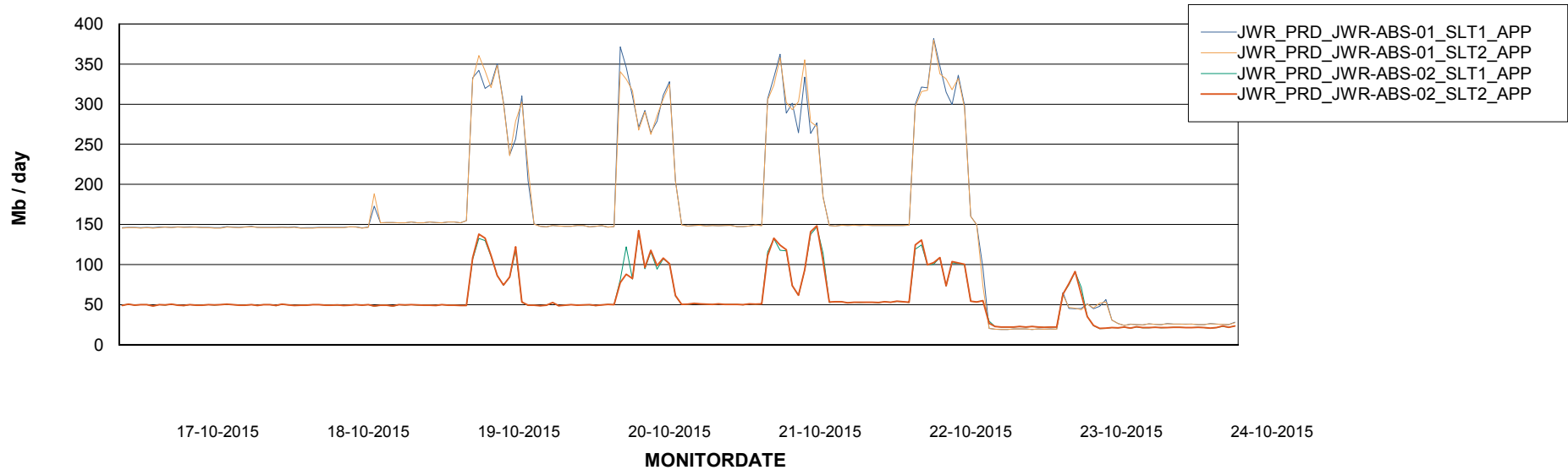


=====
ABSolute Application Server Services
=====

Disaster per ABS Server



Avg memory used per ABS Server Service



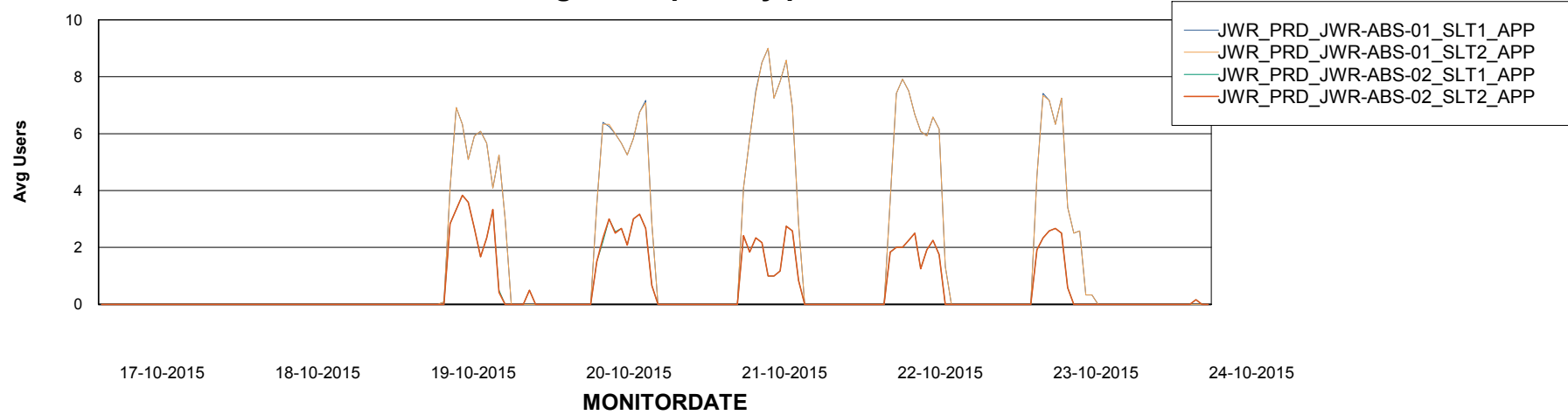
Weekly SLA Customer Report

Customer JWR Production
Database ID 43



=====
ABSolute Application Server Services
=====

Avg users per day per ABS server



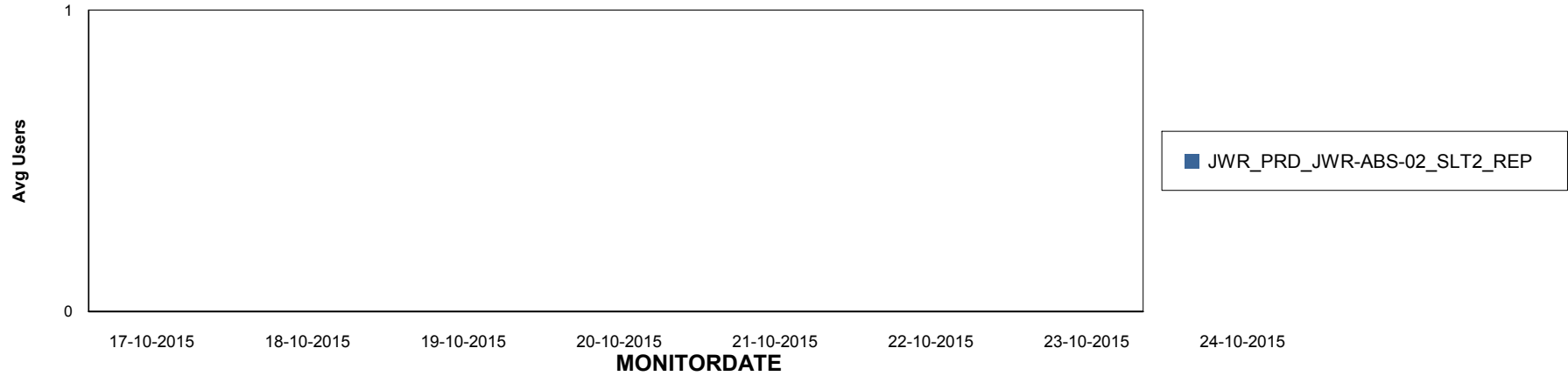
Weekly SLA Customer Report

Customer JWR Production
Database ID 43

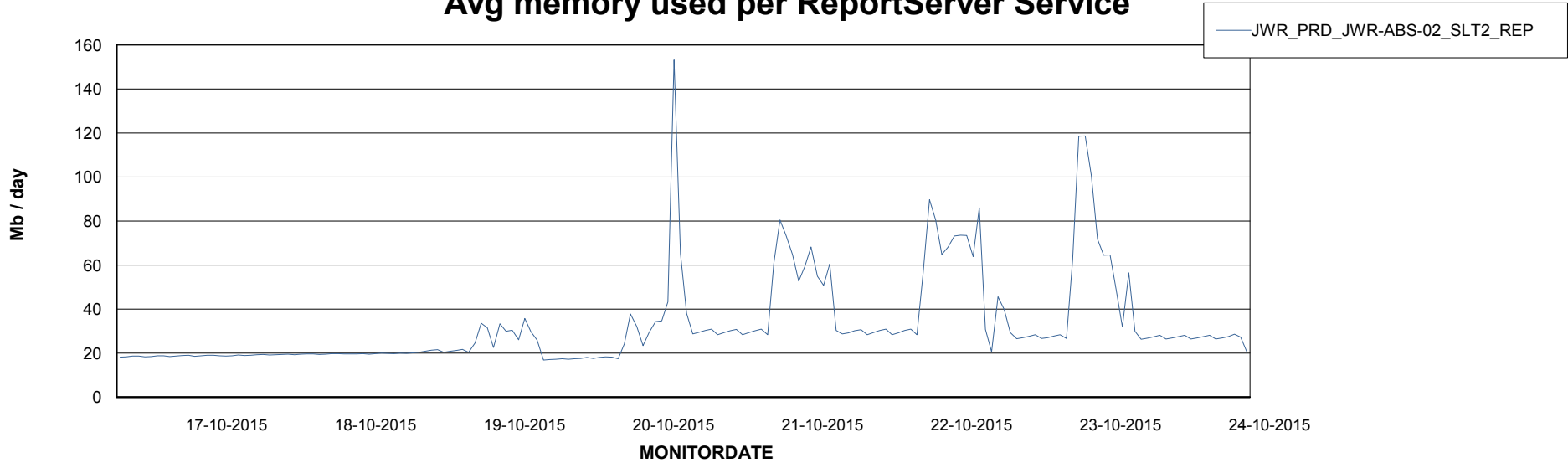


=====
ABSolute Application ReportServer Services
=====

Disaster per ReportServer



Avg memory used per ReportServer Service



Weekly SLA Customer Report

Customer JWR Production
Database ID 43



Disaster per ABS component

