

Weekly SLA Customer Report

Customer DFD Production
 Database ID 39



=====
 HARDDISK USAGE DFD_PRD_ABSWEB
 =====

	Total disk space on C (GB)	Free disk space on C (GB)
24-10-2015	60	22
23-10-2015	60	22
22-10-2015	60	22
21-10-2015	60	22
20-10-2015	60	22
19-10-2015	60	22
18-10-2015	60	22

=====
 HARDDISK USAGE DFD_PRD_BI1
 =====

	Total disk space on C (GB)	Free disk space on C (GB)	Total disk space on E (GB)	Free disk space on E (GB)
24-10-2015	40	11	100	34
23-10-2015	40	11	100	34
22-10-2015	40	11	100	34
21-10-2015	40	11	100	34
20-10-2015	40	11	100	34
19-10-2015	40	11	100	34
18-10-2015	40	11	100	34

Weekly SLA Customer Report

Customer DFD Production
 Database ID 39



=====
 HARDDISK USAGE DFD_PRD_ORACLE1
 =====

	Total disk space on C (GB)	Free disk space on C (GB)	Total disk space on D (GB)	Free disk space on D (GB)	Total disk space on E (GB)	Free disk space on E (GB)	Total disk space on F (GB)	Free disk space on F (GB)
24-10-2015	78	49	479	356	400	262	800	724
23-10-2015	78	49	479	356	400	264	800	724
22-10-2015	78	49	479	356	400	267	800	724
21-10-2015	78	49	479	356	400	271	800	724
20-10-2015	78	49	479	356	400	273	800	724
19-10-2015	78	49	479	356	400	277	800	724
18-10-2015	78	49	479	356	400	279	800	724

=====
 HARDDISK USAGE DFD_PRD_ORACLE2
 =====

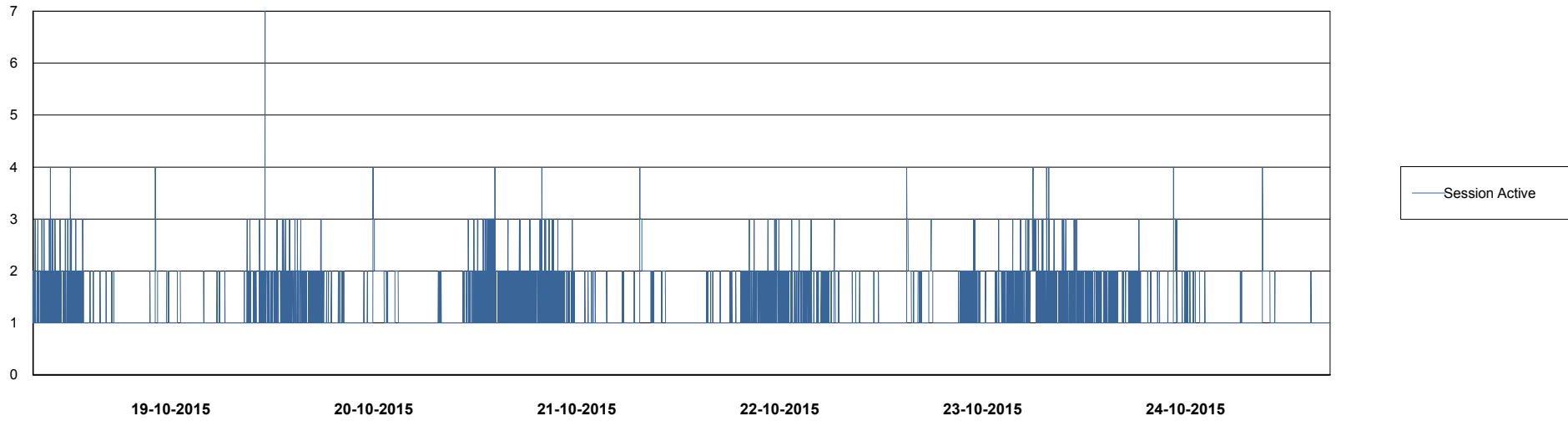
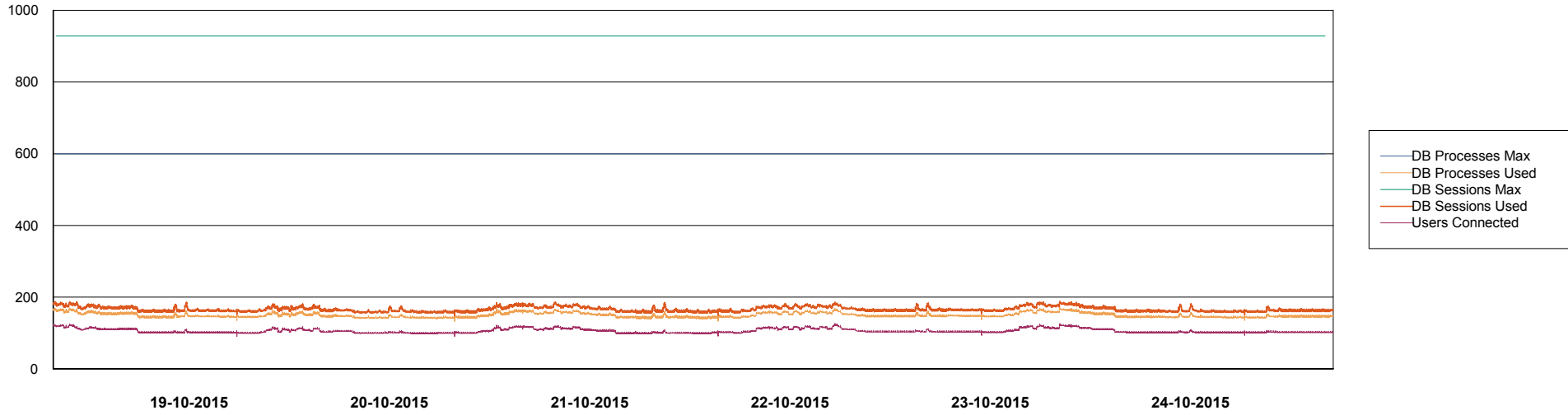
	Total disk space on C (GB)	Free disk space on C (GB)	Total disk space on D (GB)	Free disk space on D (GB)	Total disk space on E (GB)	Free disk space on E (GB)	Total disk space on F (GB)	Free disk space on F (GB)
24-10-2015	78	52	479	343	400	243	800	632
23-10-2015	78	52	479	343	400	245	800	632
22-10-2015	78	52	479	343	400	248	800	632
21-10-2015	78	52	479	343	400	252	800	632
20-10-2015	78	52	479	343	400	254	800	632
19-10-2015	78	52	479	343	400	257	800	632
18-10-2015	78	52	479	343	400	260	800	632

Weekly SLA Customer Report

Customer DFD Production
Database ID 39



DATABASE PERFORMANCE DFDDB_Production

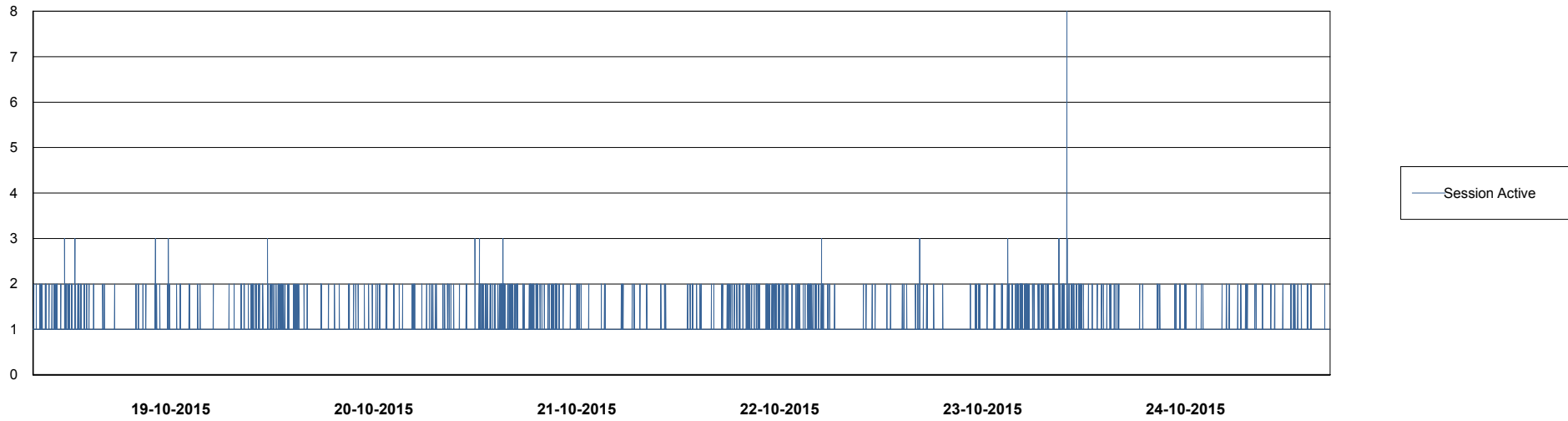
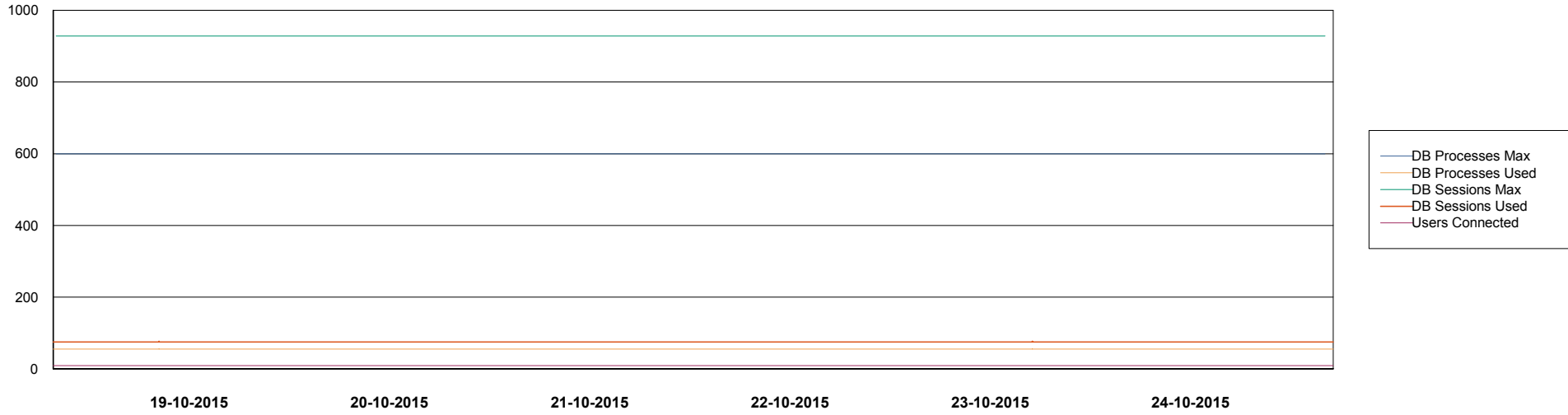


Weekly SLA Customer Report

Customer DFD Production
Database ID 39



DATABASE PERFORMANCE DFDDB_Standby

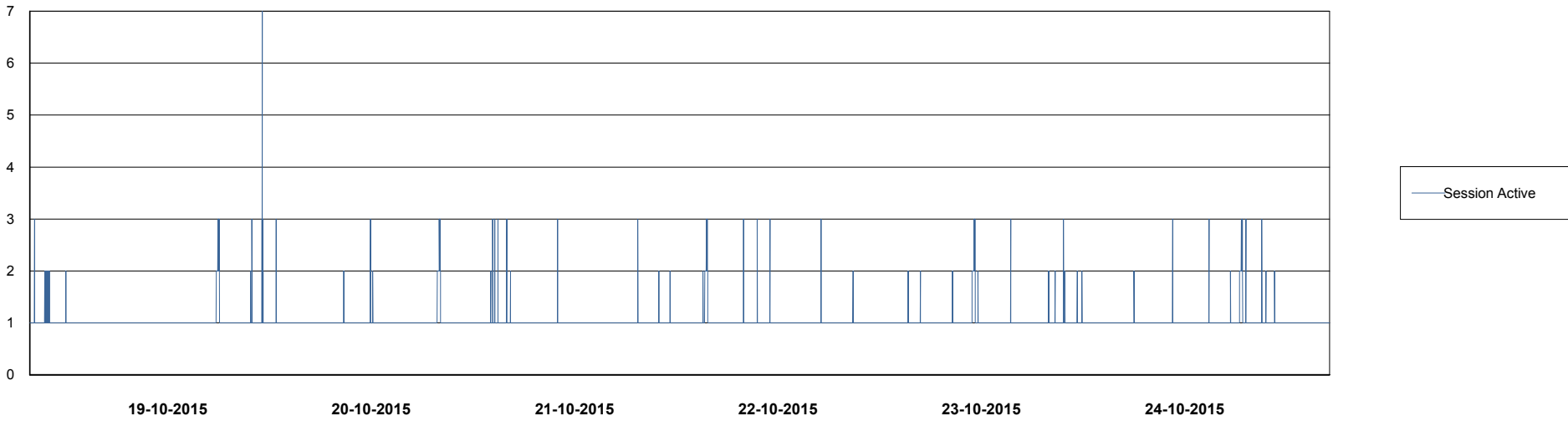
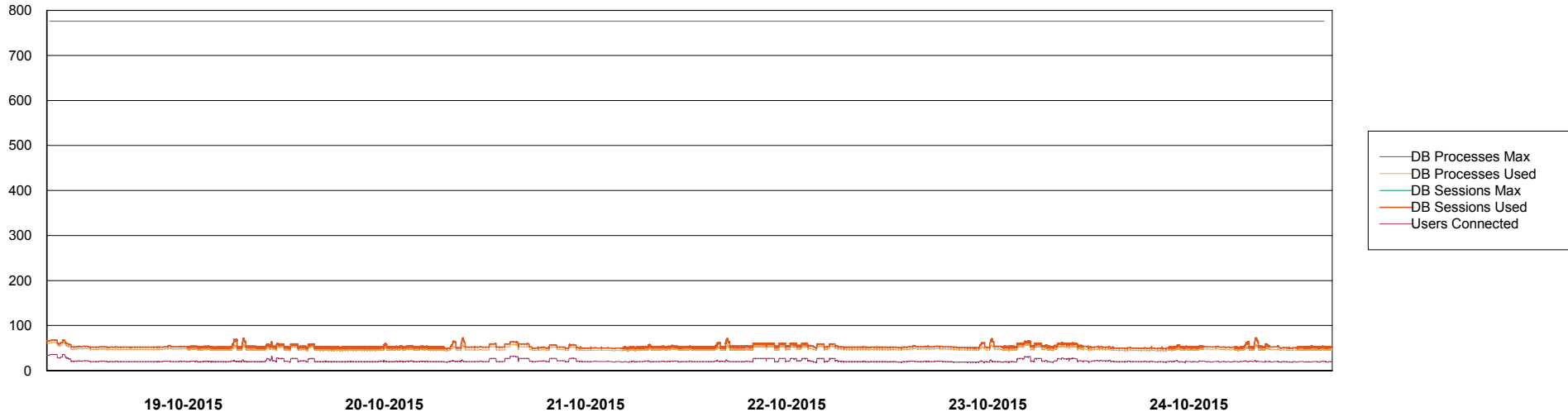


Weekly SLA Customer Report

Customer DFD Production
Database ID 39



DATABASE PERFORMANCE DFDDDBI_Production



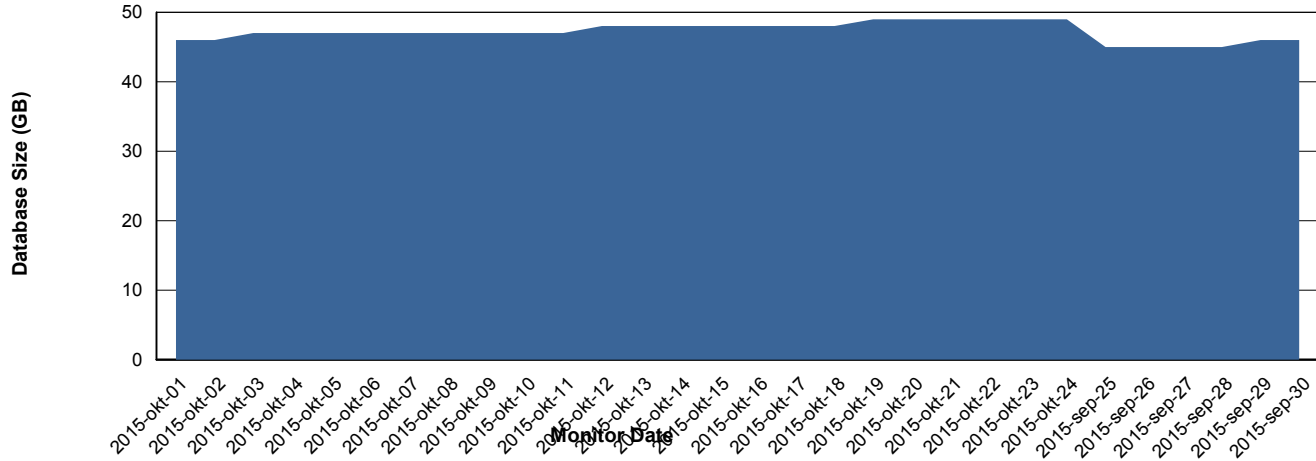
Weekly SLA Customer Report

Customer DFD Production
Database ID 39



=====
DATABASE SIZE DFDDDB_Production
=====

Database growth over last month



Weekly SLA Customer Report

Customer DFD Production
Database ID 39



=====
DATABASE TABLESPACES DFDDDB_Production
=====

TOTAL DATABASE SIZE PER TABLESPACE

Date	Tablespace Name	Filesize (Gb)	Usedsize (Gb)	Percentage free
24-10-2015	ABSDATA	21	16	24
	INDX	39	32	18
23-10-2015	ABSDATA	21	16	24
	INDX	39	32	18
22-10-2015	ABSDATA	21	16	24
	INDX	39	32	18
21-10-2015	ABSDATA	21	16	24
	INDX	39	31	21
20-10-2015	ABSDATA	21	16	24
	INDX	39	31	21
19-10-2015	ABSDATA	21	16	24
	INDX	39	31	21
18-10-2015	ABSDATA	21	16	24
	INDX	39	31	21

Weekly SLA Customer Report

Customer DFD Production
 Database ID 39



=====
 DATABASE TABLESPACES DFDDDBBI_Production
 =====

TOTAL DATABASE SIZE PER TABLESPACE

Date	Tablespace Name	Filesize (Gb)	Usedsize (Gb)	Percentage free
24-10-2015	ABSDATA	10	7	30
	INDX	20	9	55
23-10-2015	ABSDATA	10	7	30
	INDX	20	9	55
22-10-2015	ABSDATA	10	7	30
	INDX	20	9	55
21-10-2015	ABSDATA	10	7	30
	INDX	20	9	55
20-10-2015	ABSDATA	10	7	30
	INDX	20	9	55
19-10-2015	ABSDATA	10	7	30
	INDX	20	9	55
18-10-2015	ABSDATA	10	7	30
	INDX	20	9	55

=====
 STANDBY DATABASE HEALTH DFD Production
 =====

Recovery lag for last 7 days



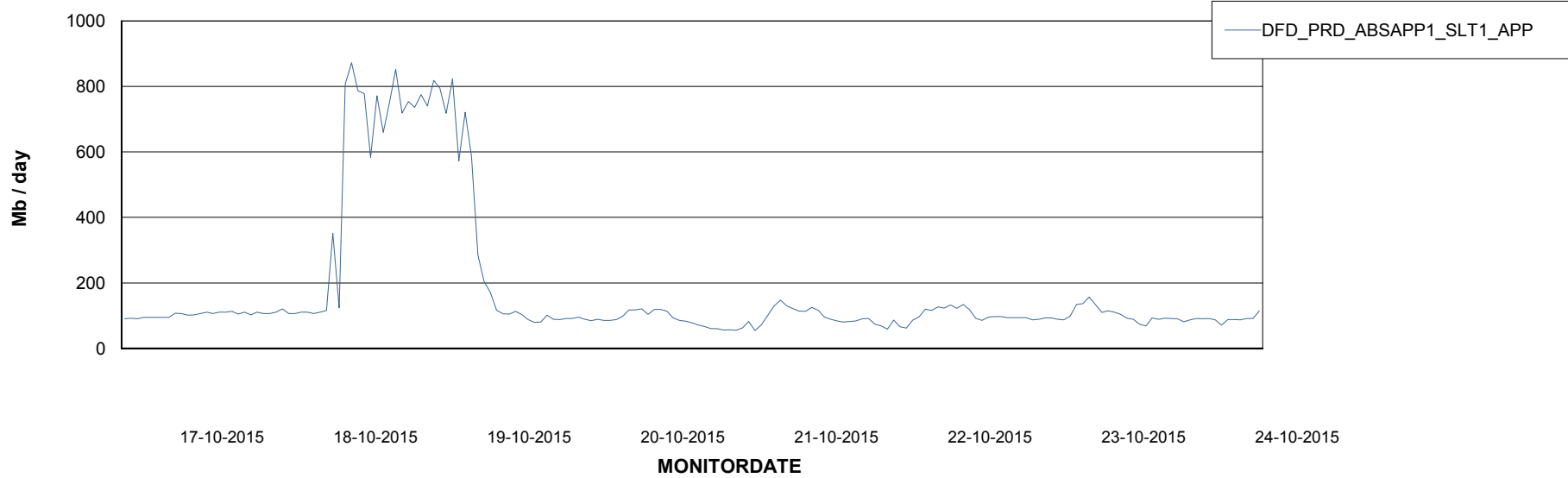
Weekly SLA Customer Report

Customer DFD Production
Database ID 39



=====
ABSolute Application Server Services
=====

Avg memory used per ABS Server Service



Weekly SLA Customer Report

Customer DFD Production
Database ID 39



=====
ABSolute Application ReportServer Services
=====

Avg memory used per ReportServer Service

