

Weekly SLA Customer Report

Customer NIX_Production
 Database ID 51



=====
 HARDDISK USAGE NIX_PRD_ABSAPP1
 =====

	Total disk space on C (GB)	Free disk space on C (GB)
17-10-2015	200	176
16-10-2015	200	176
15-10-2015	200	176
14-10-2015	200	176
13-10-2015	200	176
12-10-2015	200	176
11-10-2015	200	176

=====
 HARDDISK USAGE NIX_PRD_ABSAPP2
 =====

	Total disk space on C (GB)	Free disk space on C (GB)
17-10-2015	200	177
16-10-2015	200	177
15-10-2015	200	177
14-10-2015	200	177
13-10-2015	200	177
12-10-2015	200	177
11-10-2015	200	177

Weekly SLA Customer Report

Customer NIX_Production
 Database ID 51



=====
 HARDDISK USAGE NIX_PRD_ABSWEB01
 =====

	Total disk space on C (GB)	Free disk space on C (GB)
17-10-2015	300	282
16-10-2015	300	282
15-10-2015	300	282
14-10-2015	300	282
13-10-2015	300	282
12-10-2015	300	282
11-10-2015	300	282

=====
 HARDDISK USAGE NIX_PRD_ORACLE_B11
 =====

	Total disk space on C (GB)	Free disk space on C (GB)	Total disk space on E (GB)	Free disk space on E (GB)	Total disk space on F (GB)	Free disk space on F (GB)	Total disk space on G (GB)	Free disk space on G (GB)
17-10-2015	279	203	558	387	558	457	279	235
16-10-2015	279	203	558	387	558	457	279	235
15-10-2015	279	203	558	387	558	458	279	235
14-10-2015	279	203	558	387	558	457	279	235
13-10-2015	279	203	558	387	558	458	279	235
12-10-2015	279	203	558	387	558	458	279	235
11-10-2015	279	203	558	387	558	458	279	235

Weekly SLA Customer Report

Customer NIX_Production
 Database ID 51



=====
 HARDDISK USAGE NIX_PRD_ORCDB1
 =====

	Total disk space on C (GB)	Free disk space on C (GB)	Total disk space on E (GB)	Free disk space on E (GB)	Total disk space on F (GB)	Free disk space on F (GB)	Total disk space on G (GB)	Free disk space on G (GB)
17-10-2015	279	95	558	487	558	452	279	122
16-10-2015	279	94	558	491	558	456	279	124
15-10-2015	279	95	558	492	558	457	279	126
14-10-2015	279	95	558	492	558	457	279	128
13-10-2015	279	95	558	492	558	457	279	130
12-10-2015	279	95	558	492	558	457	279	133
11-10-2015	279	95	558	492	558	457	279	134

=====
 HARDDISK USAGE NIX_PRD_ORCDB2
 =====

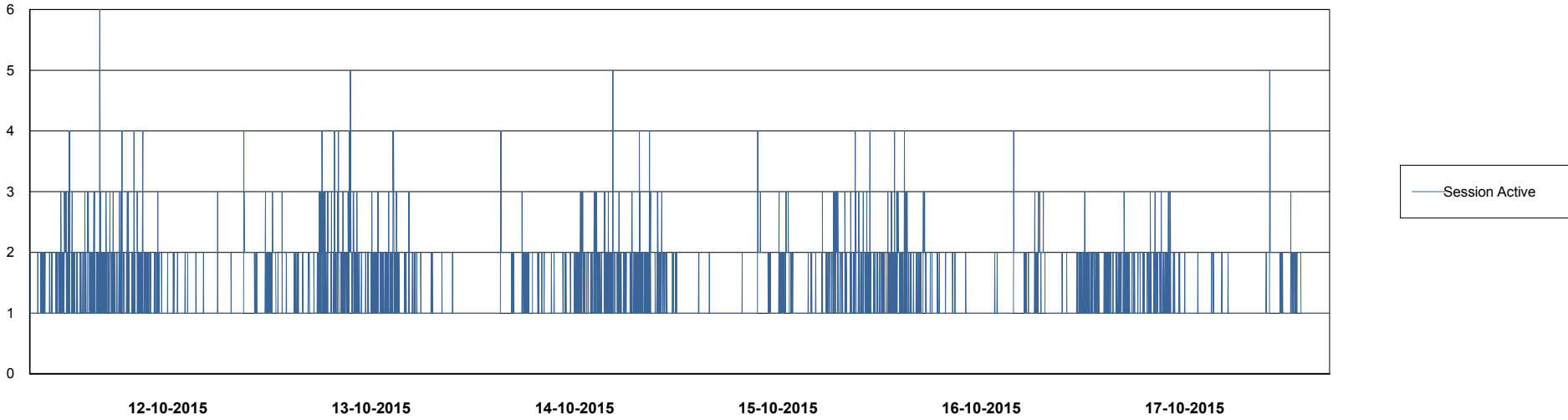
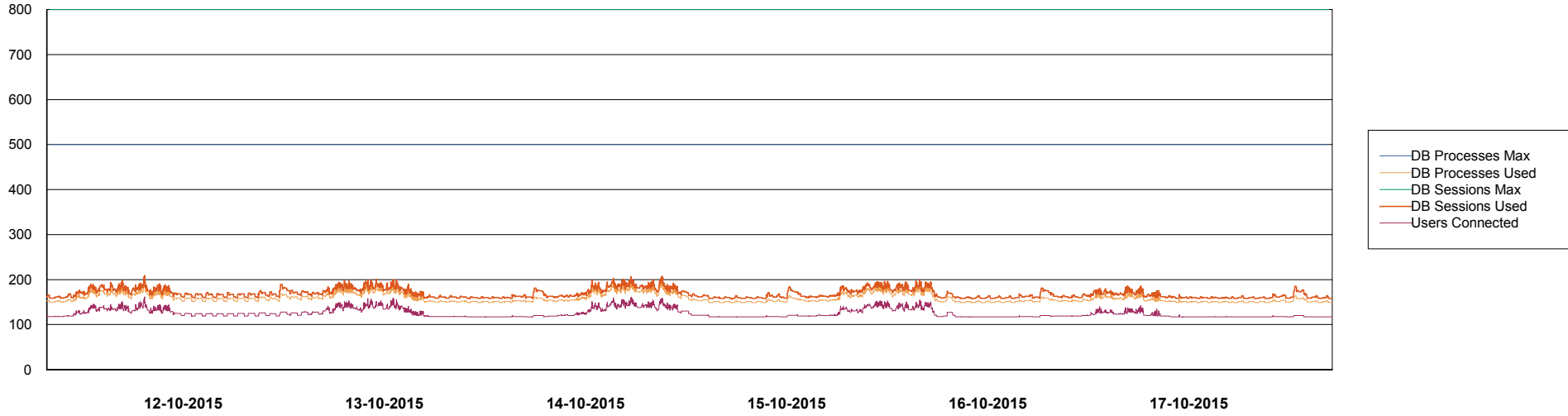
	Total disk space on C (GB)	Free disk space on C (GB)	Total disk space on E (GB)	Free disk space on E (GB)	Total disk space on F (GB)	Free disk space on F (GB)	Total disk space on G (GB)	Free disk space on G (GB)
17-10-2015	279	237	558	401	558	457	279	38
16-10-2015	279	237	558	401	558	457	279	39
15-10-2015	279	237	558	401	558	457	279	41
14-10-2015	279	237	558	401	558	457	279	43
13-10-2015	279	237	558	401	558	457	279	46
12-10-2015	279	237	558	401	558	457	279	48
11-10-2015	279	237	558	401	558	457	279	49

Weekly SLA Customer Report

Customer NIX_Production
Database ID 51



DATABASE PERFORMANCE NIXDB_Production



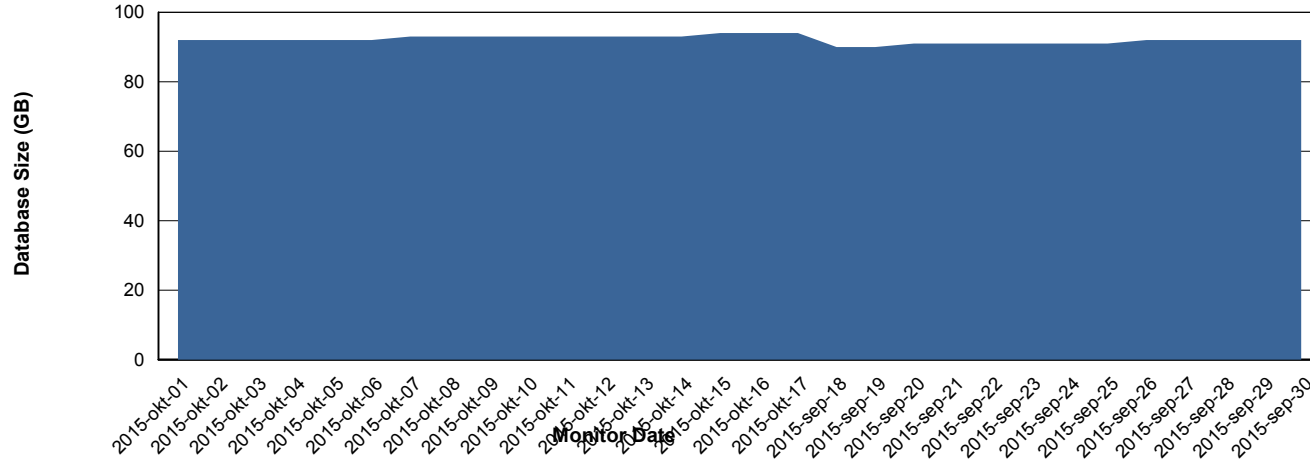
Weekly SLA Customer Report

Customer NIX_Production
 Database ID 51



=====
 DATABASE SIZE NIXDB_Production
 =====

Database growth over last month



=====
 DATABASE TABLESPACES NIXDB_Production
 =====

TOTAL DATABASE SIZE PER TABLESPACE

Date	Tablespace Name	Filesize (Gb)	Usedsize (Gb)	Percentage free
17-10-2015	ABSDATA	50	36	28
	INDX	100	57	43
16-10-2015	ABSDATA	50	36	28
	INDX	100	57	43
15-10-2015	ABSDATA	50	36	28
	INDX	100	57	43
14-10-2015	ABSDATA	50	36	28
	INDX	100	56	44
13-10-2015	ABSDATA	50	35	30
	INDX	100	56	44
12-10-2015	ABSDATA	50	35	30
	INDX	100	56	44
11-10-2015	ABSDATA	50	35	30
	INDX	100	56	44

Weekly SLA Customer Report

Customer NIX_Production
Database ID 51



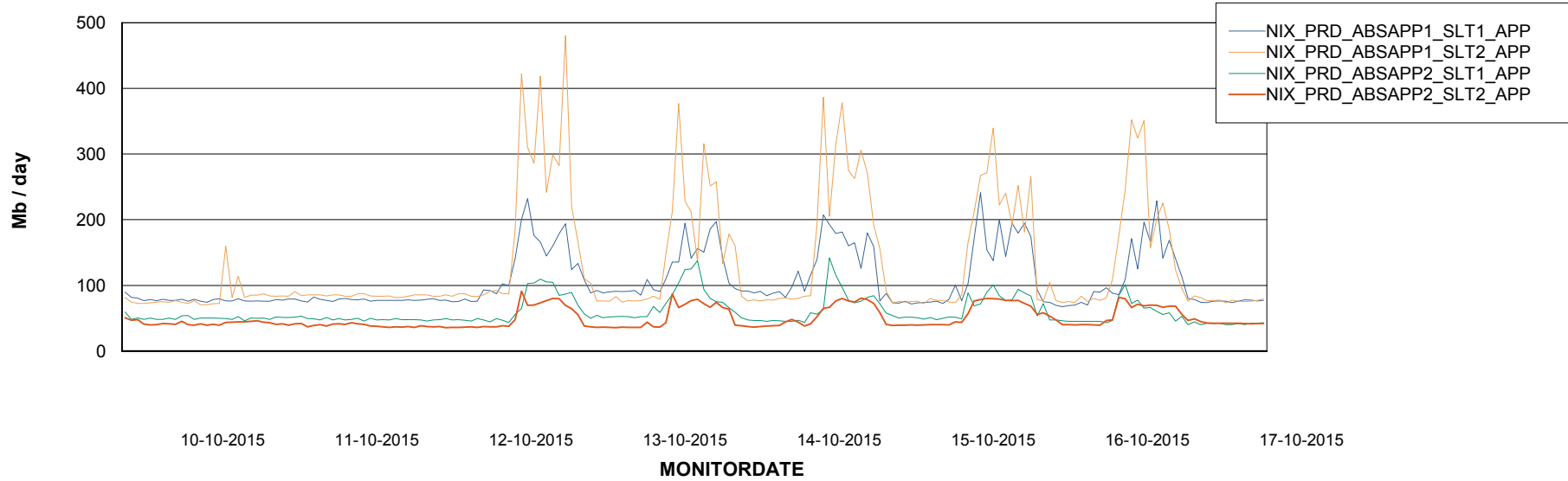
Weekly SLA Customer Report

Customer NIX_Production
Database ID 51



=====
ABSolute Application Server Services
=====

Avg memory used per ABS Server Service



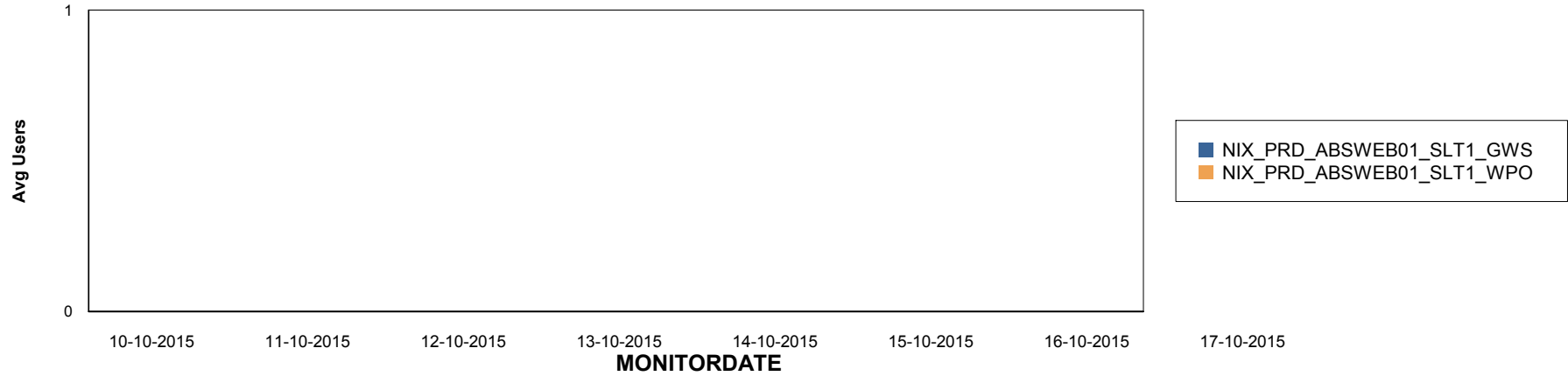
Weekly SLA Customer Report

Customer NIX_Production
Database ID 51

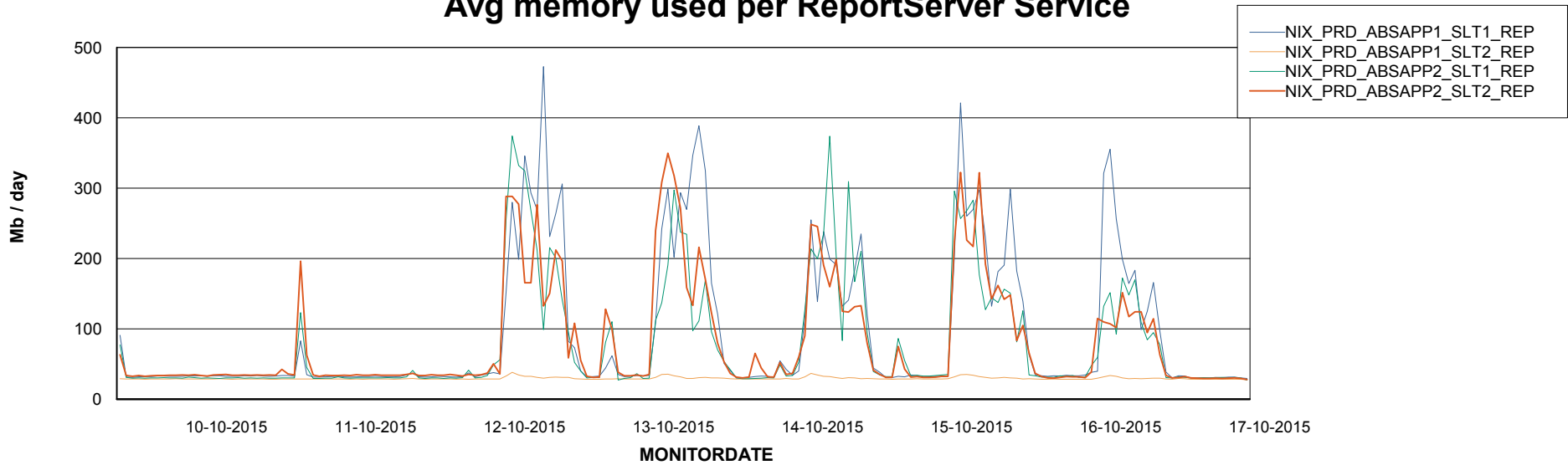


=====
ABSolute Application ReportServer Services
=====

Disaster per ReportServer



Avg memory used per ReportServer Service



Weekly SLA Customer Report

Customer NIX_Production
Database ID 51



Disaster per ABS component

