

Weekly SLA Customer Report

Customer PCO Production
 Database ID 44



=====
 HARDDISK USAGE PCO_PRD_ORACLE1
 =====

	Total disk space on C (GB)	Free disk space on C (GB)	Total disk space on D (GB)	Free disk space on D (GB)
10-10-2015	279	217	838	172
9-10-2015	279	217	838	174
8-10-2015	279	217	838	177
7-10-2015	279	217	838	180
6-10-2015	279	217	838	182
5-10-2015	279	217	838	143
4-10-2015	279	217	838	108

=====
 HARDDISK USAGE PCO_PRD_ORACLE2
 =====

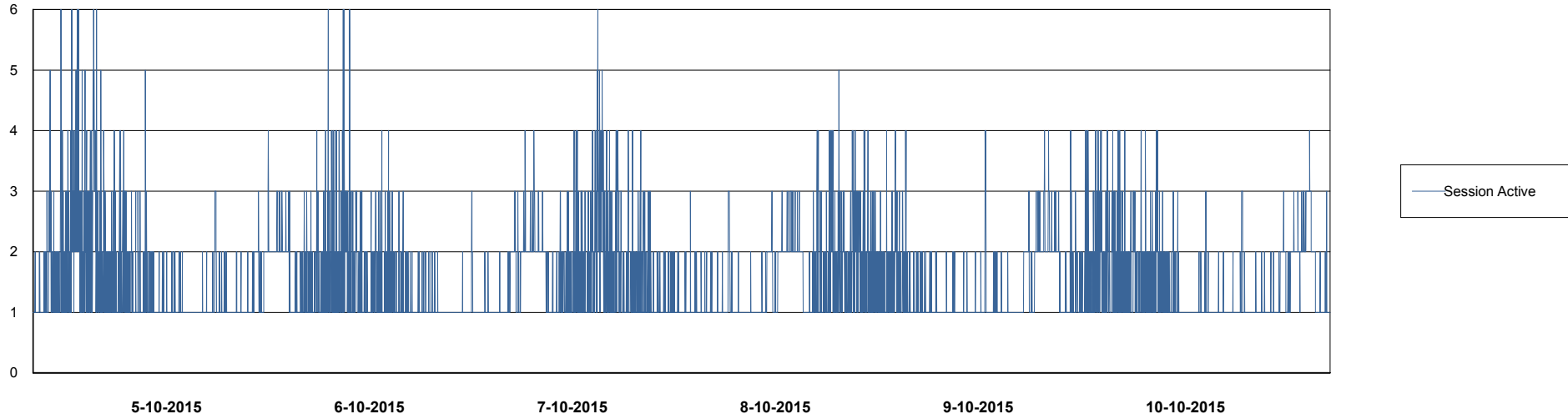
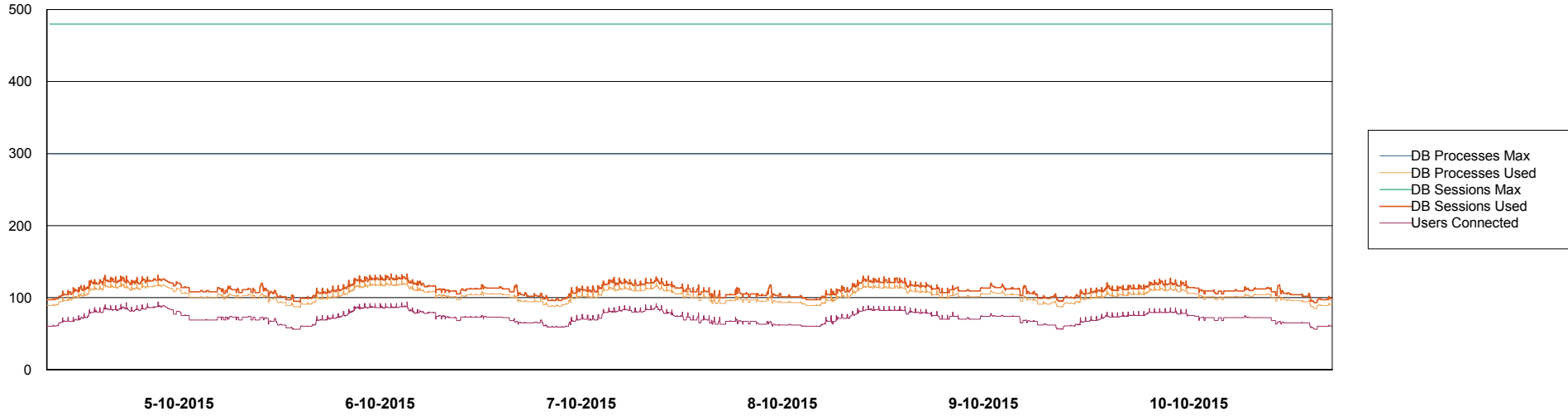
	Total disk space on C (GB)	Free disk space on C (GB)	Total disk space on D (GB)	Free disk space on D (GB)
10-10-2015	279	218	838	539
9-10-2015	279	218	838	541
8-10-2015	279	218	838	544
7-10-2015	279	218	838	546
6-10-2015	279	218	838	549
5-10-2015	279	218	838	486
4-10-2015	279	218	838	430

Weekly SLA Customer Report

Customer PCO Production
Database ID 44



DATABASE PERFORMANCE PCODB_Production

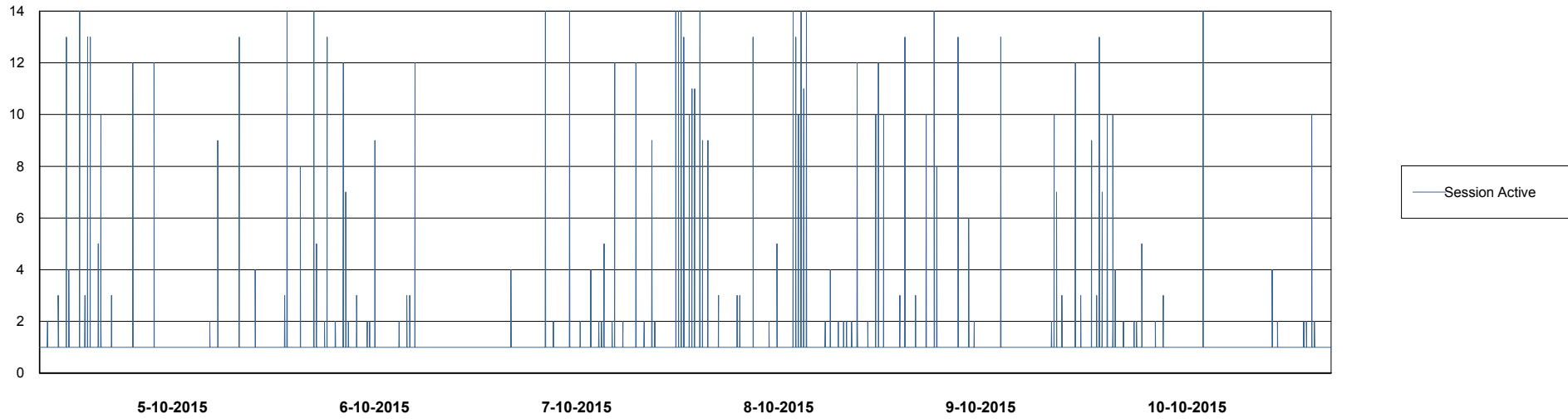
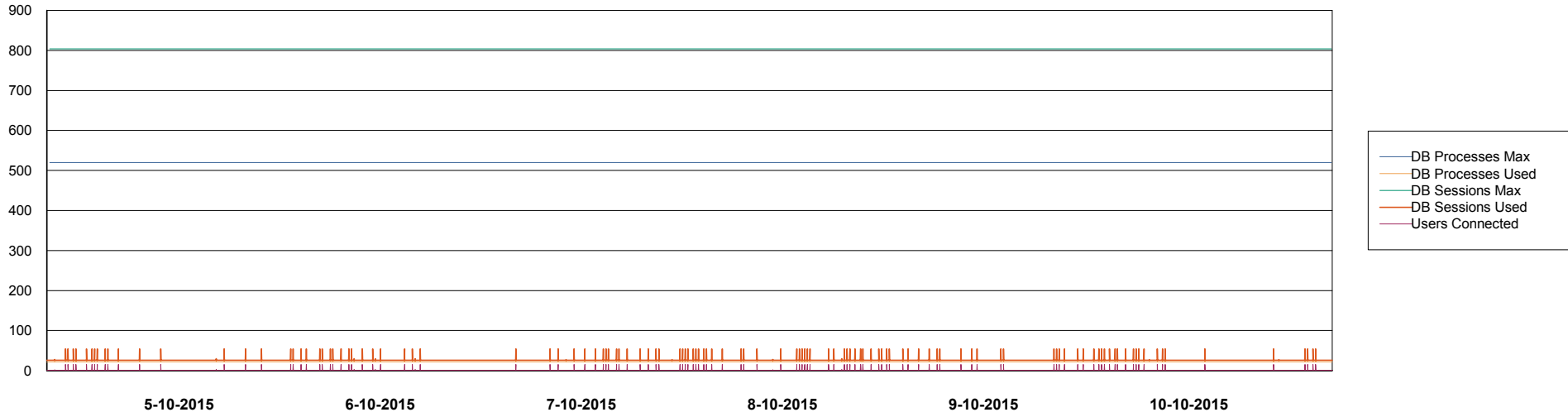


Weekly SLA Customer Report

Customer PCO Production
Database ID 44



DATABASE PERFORMANCE PCODB_Standby



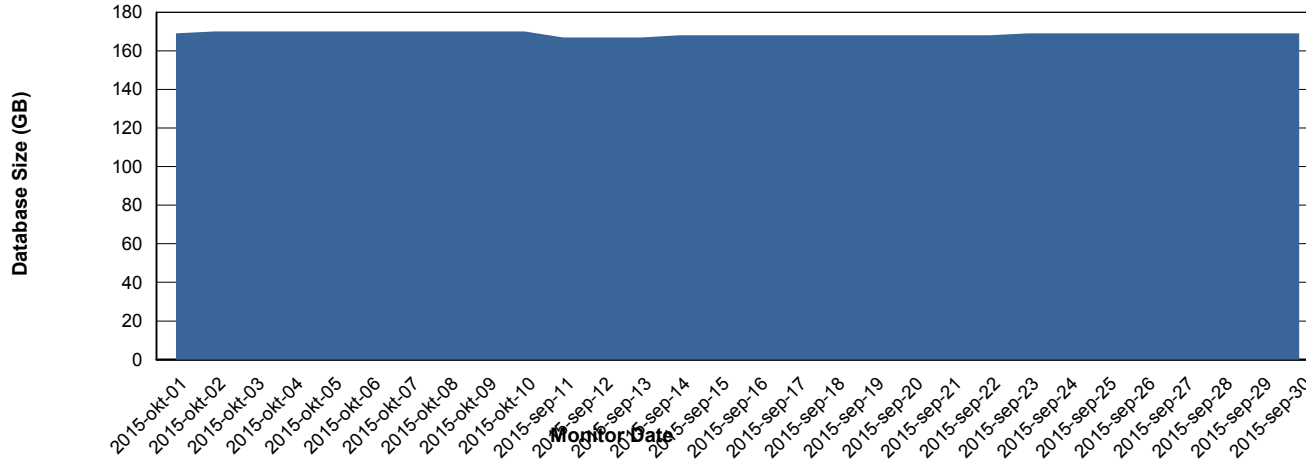
Weekly SLA Customer Report

Customer PCO Production
 Database ID 44



=====
 DATABASE SIZE PCODB_Production
 =====

Database growth over last month



=====
 DATABASE TABLESPACES PCODB_Production
 =====

TOTAL DATABASE SIZE PER TABLESPACE

Date	Tablespace Name	Filesize (Gb)	Usedsize (Gb)	Percentage free
10-10-2015	ABSDATA	81	66	19
	INDX	125	103	18
9-10-2015	ABSDATA	81	66	19
	INDX	125	103	18
8-10-2015	ABSDATA	81	66	19
	INDX	125	103	18
7-10-2015	ABSDATA	81	66	19
	INDX	125	103	18
6-10-2015	ABSDATA	81	66	19
	INDX	125	102	18
5-10-2015	ABSDATA	81	66	19
	INDX	125	102	18
4-10-2015	ABSDATA	81	66	19
	INDX	125	102	18

Weekly SLA Customer Report

Customer PCO Production
Database ID 44



=====
STANDBY DATABASE HEALTH PCO Production
=====

Recovery lag for last 7 days



- 3-10-2015
- 4-10-2015
- 5-10-2015
- 6-10-2015
- 7-10-2015
- 8-10-2015
- 9-10-2015
- 10-10-2015