

Weekly SLA Customer Report

Customer NIX_Production
Database ID 51



=====
HARDDISK USAGE NIX_PRD_ABSAPP1
=====

	Total disk space on C (GB)	Free disk space on C (GB)
10-10-2015	200	176
9-10-2015	200	176
8-10-2015	200	176
7-10-2015	200	176
6-10-2015	200	176
5-10-2015	200	176
4-10-2015	200	176

=====
HARDDISK USAGE NIX_PRD_ABSAPP2
=====

	Total disk space on C (GB)	Free disk space on C (GB)
10-10-2015	200	177
9-10-2015	200	177
8-10-2015	200	177
7-10-2015	200	177
6-10-2015	200	177
5-10-2015	200	177
4-10-2015	200	177

Weekly SLA Customer Report

Customer NIX_Production
 Database ID 51



=====
 HARDDISK USAGE NIX_PRD_ABSWEB01
 =====

	Total disk space on C (GB)	Free disk space on C (GB)
10-10-2015	300	282
9-10-2015	300	282
8-10-2015	300	282
7-10-2015	300	282
6-10-2015	300	281
5-10-2015	300	280
4-10-2015	300	280

=====
 HARDDISK USAGE NIX_PRD_ORACLE_B11
 =====

	Total disk space on C (GB)	Free disk space on C (GB)	Total disk space on E (GB)	Free disk space on E (GB)	Total disk space on F (GB)	Free disk space on F (GB)	Total disk space on G (GB)	Free disk space on G (GB)
10-10-2015	279	204	558	387	558	457	279	235
9-10-2015	279	203	558	387	558	458	279	235
8-10-2015	279	204	558	387	558	458	279	235
7-10-2015	279	204	558	387	558	458	279	235
6-10-2015	279	204	558	387	558	458	279	235
5-10-2015	279	204	558	387	558	458	279	235
4-10-2015	279	204	558	387	558	458	279	235

Weekly SLA Customer Report

Customer NIX_Production
 Database ID 51



=====
 HARDDISK USAGE NIX_PRD_ORCDB1
 =====

	Total disk space on C (GB)	Free disk space on C (GB)	Total disk space on E (GB)	Free disk space on E (GB)	Total disk space on F (GB)	Free disk space on F (GB)	Total disk space on G (GB)	Free disk space on G (GB)
10-10-2015	279	95	558	492	558	457	279	136
9-10-2015	279	95	558	492	558	457	279	138
8-10-2015	279	95	558	492	558	457	279	140
7-10-2015	279	95	558	492	558	457	279	142
6-10-2015	279	95	558	492	558	457	279	144
5-10-2015	279	95	558	492	558	457	279	147
4-10-2015	279	95	558	492	558	457	279	148

=====
 HARDDISK USAGE NIX_PRD_ORCDB2
 =====

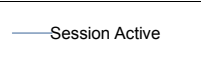
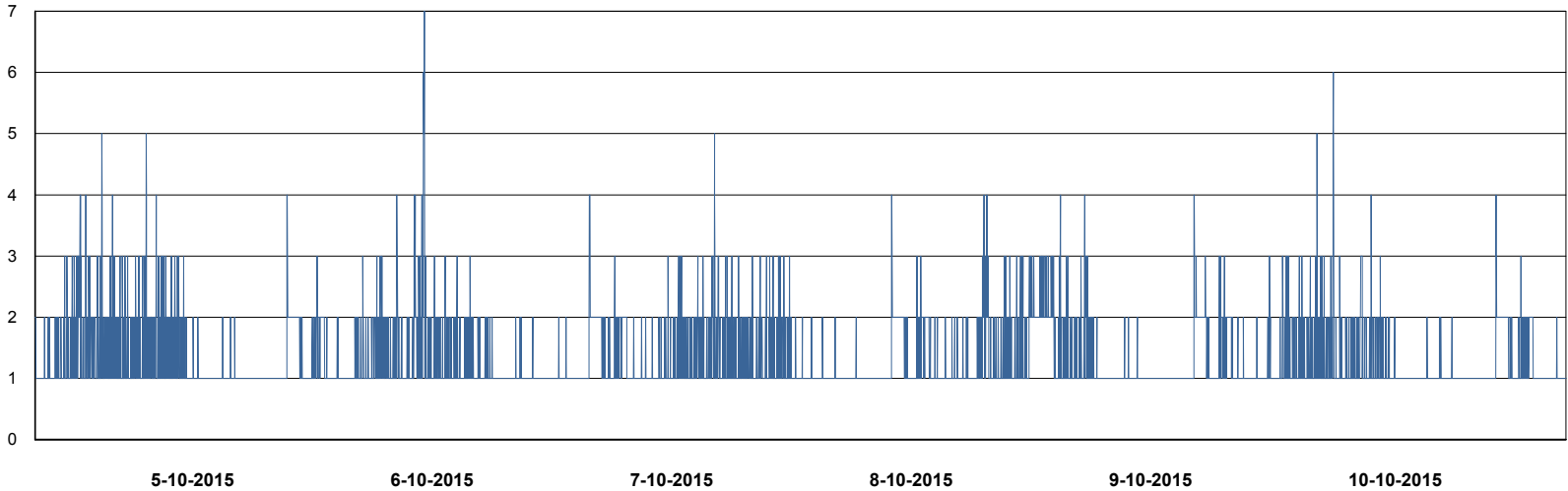
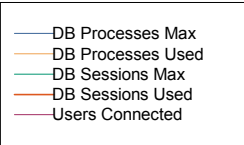
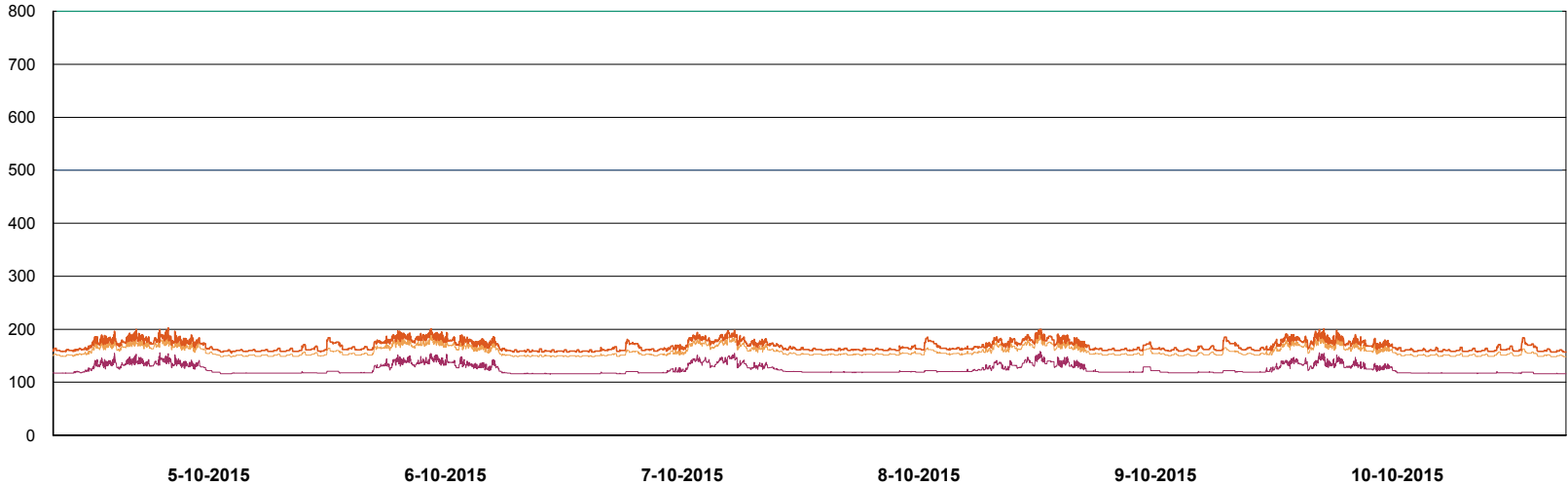
	Total disk space on C (GB)	Free disk space on C (GB)	Total disk space on E (GB)	Free disk space on E (GB)	Total disk space on F (GB)	Free disk space on F (GB)	Total disk space on G (GB)	Free disk space on G (GB)
10-10-2015	279	237	558	401	558	457	279	52
9-10-2015	279	237	558	401	558	457	279	53
8-10-2015	279	237	558	401	558	457	279	55
7-10-2015	279	237	558	401	558	457	279	57
6-10-2015	279	237	558	401	558	457	279	60
5-10-2015	279	237	558	401	558	457	279	62
4-10-2015	279	237	558	401	558	457	279	63

Weekly SLA Customer Report

Customer NIX_Production
Database ID 51



DATABASE PERFORMANCE NIXDB_Production



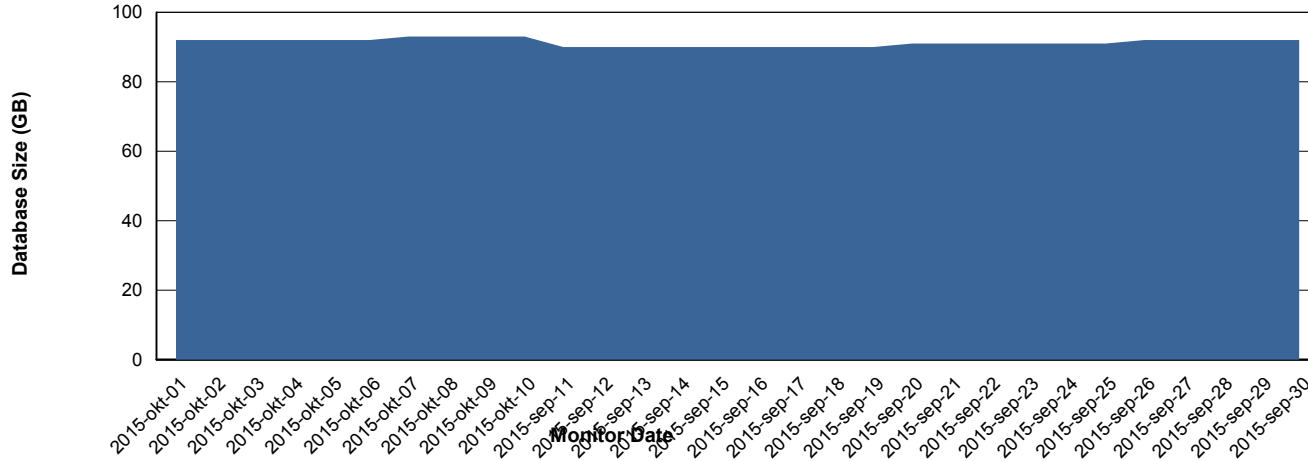
Weekly SLA Customer Report

Customer NIX_Production
 Database ID 51



=====
 DATABASE SIZE NIXDB_Production
 =====

Database growth over last month



=====
 DATABASE TABLESPACES NIXDB_Production
 =====

TOTAL DATABASE SIZE PER TABLESPACE

Date	Tablespace Name	Filesize (Gb)	Usedsize (Gb)	Percentage free
10-10-2015	ABSDATA	50	35	30
	INDX	100	56	44
9-10-2015	ABSDATA	50	35	30
	INDX	100	56	44
8-10-2015	ABSDATA	50	35	30
	INDX	100	56	44
7-10-2015	ABSDATA	50	35	30
	INDX	100	56	44
6-10-2015	ABSDATA	50	35	30
	INDX	100	56	44
5-10-2015	ABSDATA	50	35	30
	INDX	100	56	44
4-10-2015	ABSDATA	50	35	30
	INDX	100	56	44

Weekly SLA Customer Report

Customer NIX_Production
Database ID 51



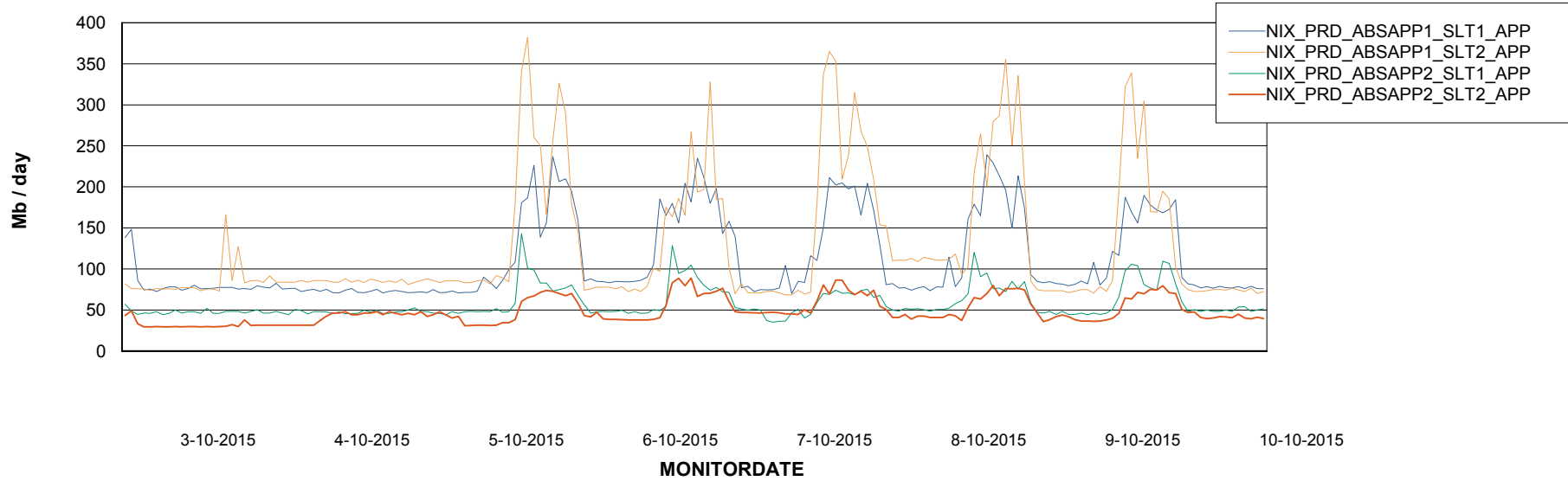
Weekly SLA Customer Report

Customer NIX_Production
Database ID 51



=====
ABSolute Application Server Services
=====

Avg memory used per ABS Server Service



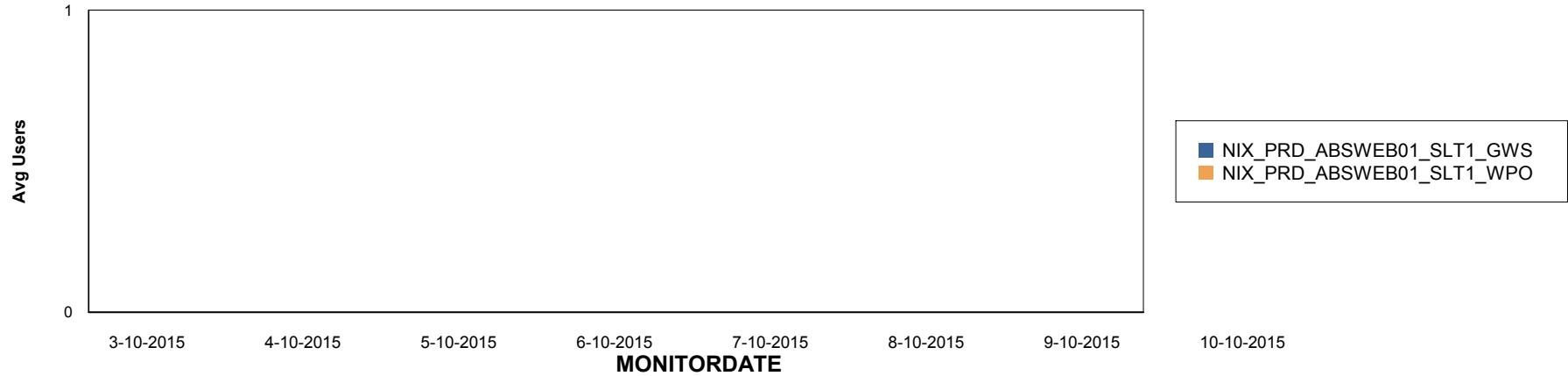
Weekly SLA Customer Report

Customer NIX_Production
Database ID 51

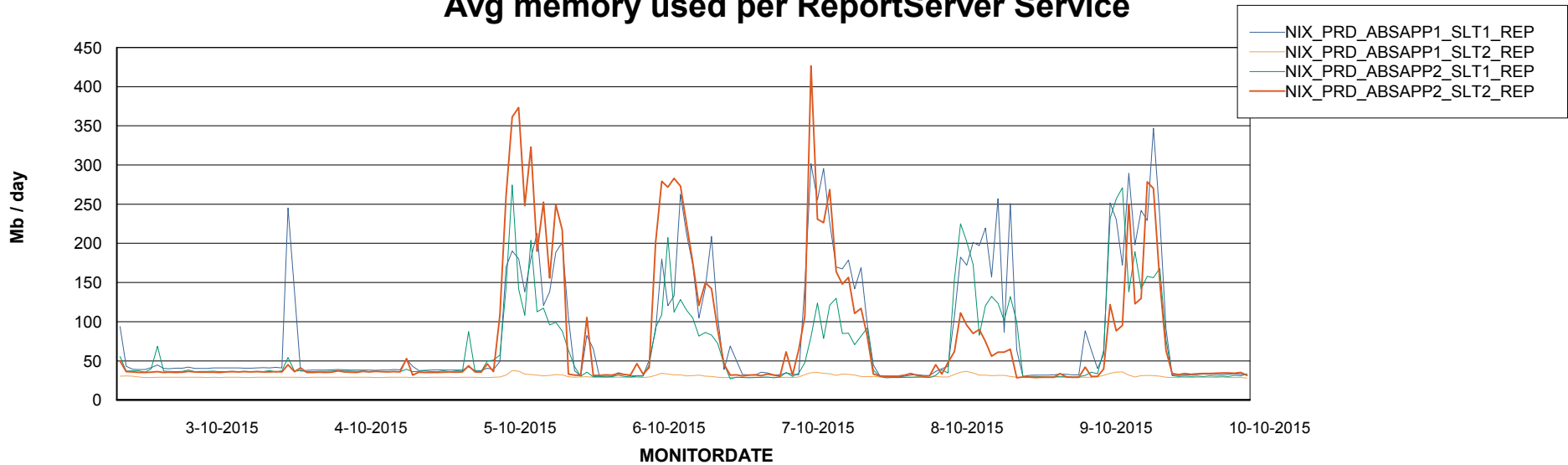


=====
ABSolute Application ReportServer Services
=====

Disaster per ReportServer



Avg memory used per ReportServer Service



Weekly SLA Customer Report

Customer NIX_Production
Database ID 51



Disaster per ABS component

