

# Weekly SLA Customer Report

Customer JWR Production  
Database ID 43



=====  
HARDDISK USAGE JWR\_PRD\_JWR-ABS-01  
=====

	Used disk space on / (GB)	Total disk space on / (GB)	Free disk space on / (GB)
10-10-2015	29	49	18
9-10-2015	29	49	18
8-10-2015	29	49	18
7-10-2015	29	49	18
6-10-2015	29	49	18
5-10-2015	29	49	18
4-10-2015	29	49	18

=====  
HARDDISK USAGE JWR\_PRD\_JWR-ABS-02  
=====

	Used disk space on / (GB)	Total disk space on / (GB)	Free disk space on / (GB)
10-10-2015	34	49	13
9-10-2015	34	49	13
8-10-2015	34	49	13
7-10-2015	34	49	13
6-10-2015	34	49	13
5-10-2015	34	49	13
4-10-2015	34	49	13

## Weekly SLA Customer Report

Customer      JWR Production  
 Database ID    43



=====  
 HARDDISK USAGE    JWR\_PRD\_JWR-ODB-01  
 =====

	Used disk space on / (GB)	Total disk space on / (GB)	Free disk space on / (GB)
10-10-2015	97	148	44
9-10-2015	97	148	43
8-10-2015	98	148	43
7-10-2015	97	148	43
6-10-2015	98	148	43
5-10-2015	98	148	43
4-10-2015	97	148	44

=====  
 HARDDISK USAGE    JWR\_PRD\_JWR-ODB-02  
 =====

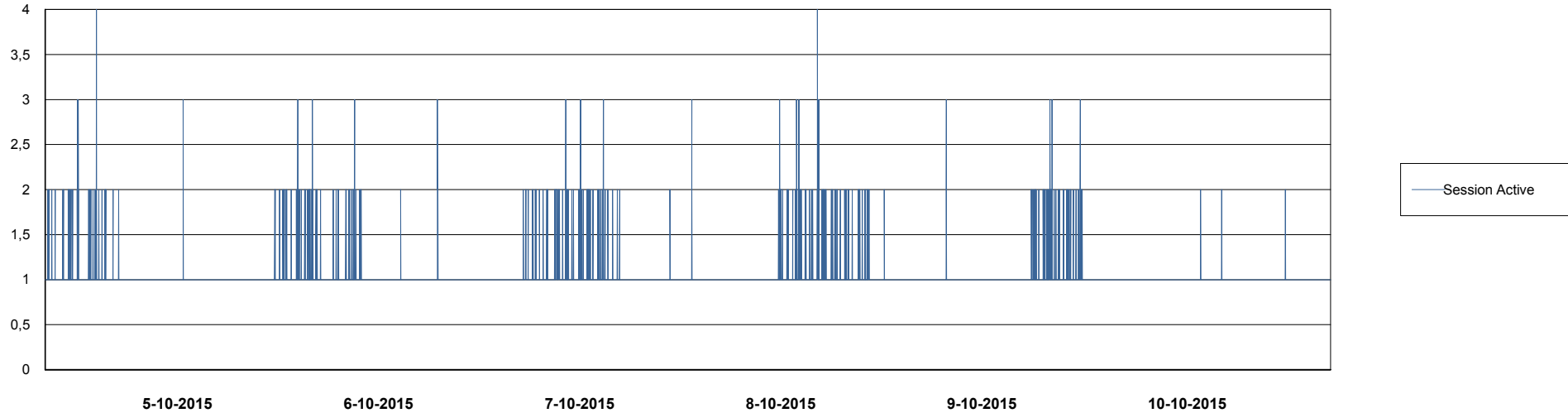
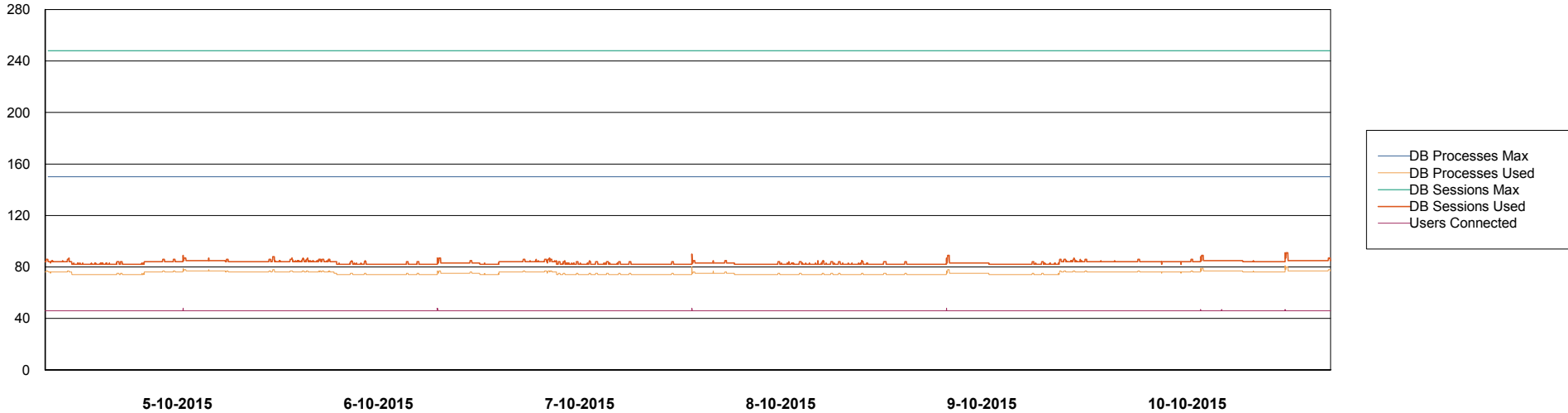
	Used disk space on / (GB)	Total disk space on / (GB)	Free disk space on / (GB)
10-10-2015	95	138	36
9-10-2015	95	138	36
8-10-2015	95	138	36
7-10-2015	95	138	36
6-10-2015	95	138	36
5-10-2015	95	138	36
4-10-2015	95	138	36

# Weekly SLA Customer Report

Customer JWR Production  
Database ID 43



DATABASE PERFORMANCE JWRDB\_Production



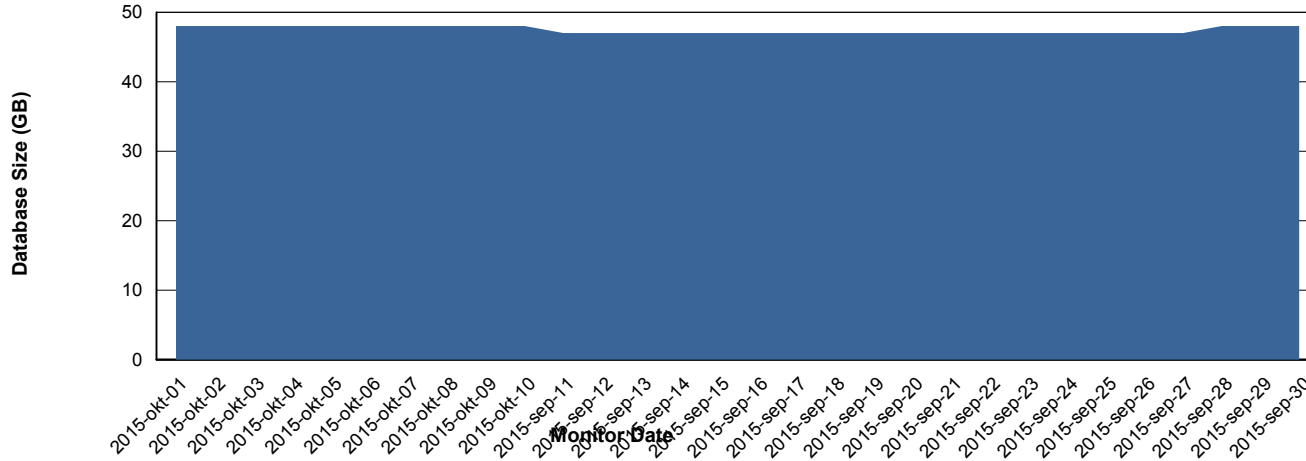
# Weekly SLA Customer Report

Customer JWR Production  
 Database ID 43



=====  
 DATABASE SIZE JWRDB\_Production  
 =====

## Database growth over last month



=====  
 DATABASE TABLESPACES JWRDB\_Production  
 =====

### TOTAL DATABASE SIZE PER TABLESPACE

Date	Tablespace Name	Filesize (Gb)	Usedsize (Gb)	Percentage free
10-10-2015	ABSDATA	18	13	28
	INDX	40	34	15
9-10-2015	ABSDATA	18	13	28
	INDX	40	34	15
8-10-2015	ABSDATA	18	13	28
	INDX	40	34	15
7-10-2015	ABSDATA	18	13	28
	INDX	40	34	15
6-10-2015	ABSDATA	18	13	28
	INDX	40	34	15
5-10-2015	ABSDATA	18	13	28
	INDX	40	33	18
4-10-2015	ABSDATA	18	13	28
	INDX	40	33	18

# Weekly SLA Customer Report

---

Customer     JWR Production  
Database ID   43



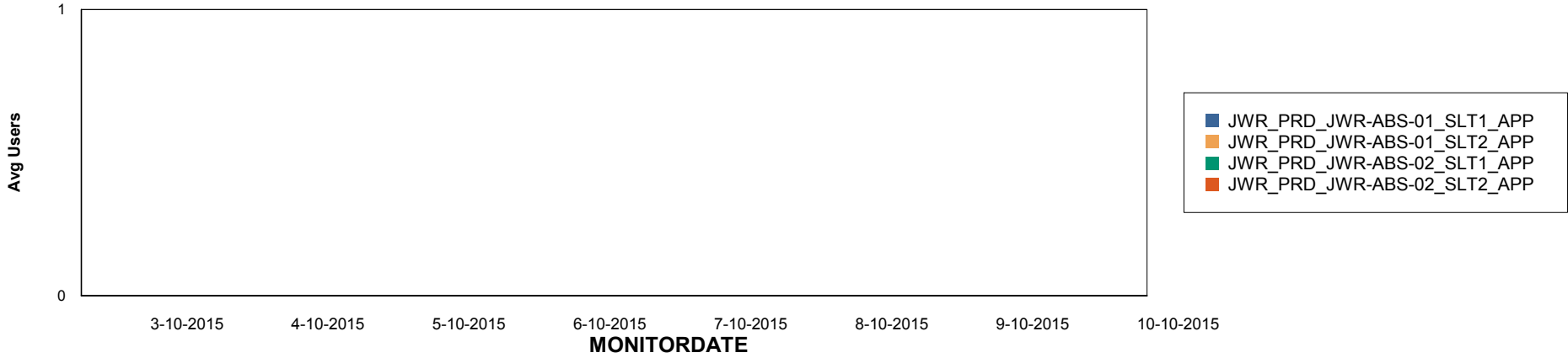
# Weekly SLA Customer Report

Customer JWR Production  
Database ID 43

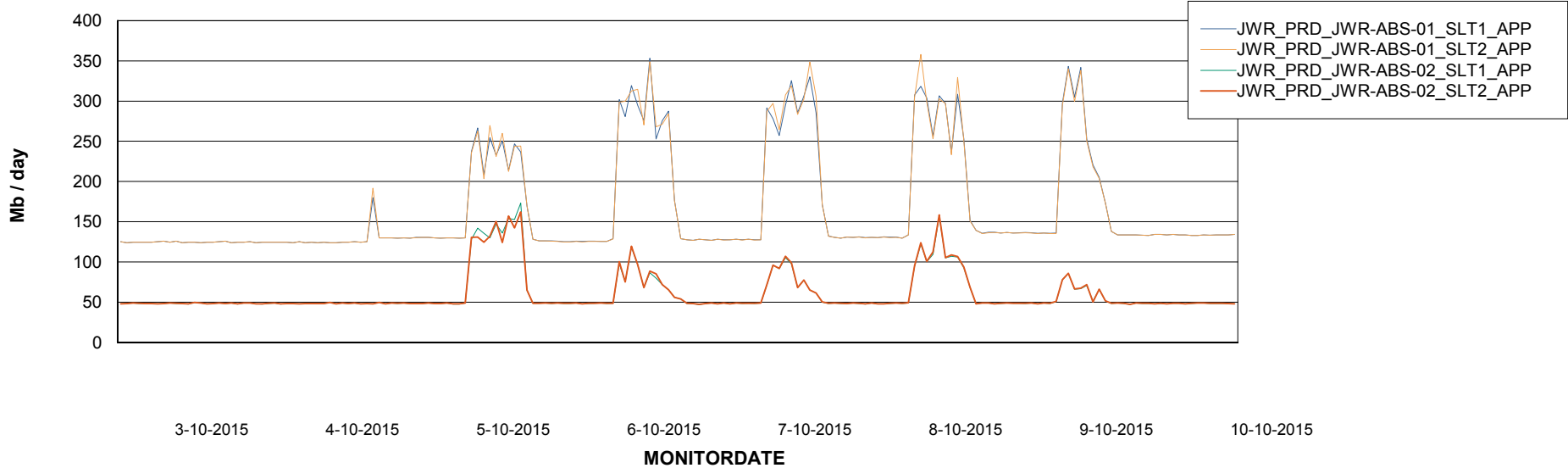


=====  
ABSolute Application Server Services  
=====

## Disaster per ABS Server



## Avg memory used per ABS Server Service



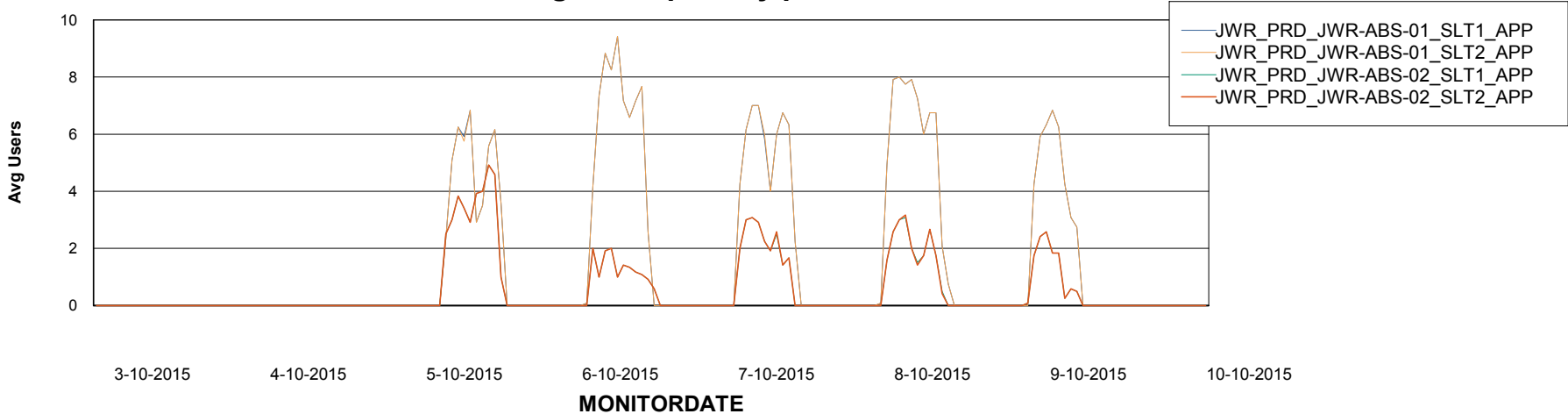
# Weekly SLA Customer Report

Customer JWR Production  
Database ID 43



=====  
ABSolute Application Server Services  
=====

### Avg users per day per ABS server



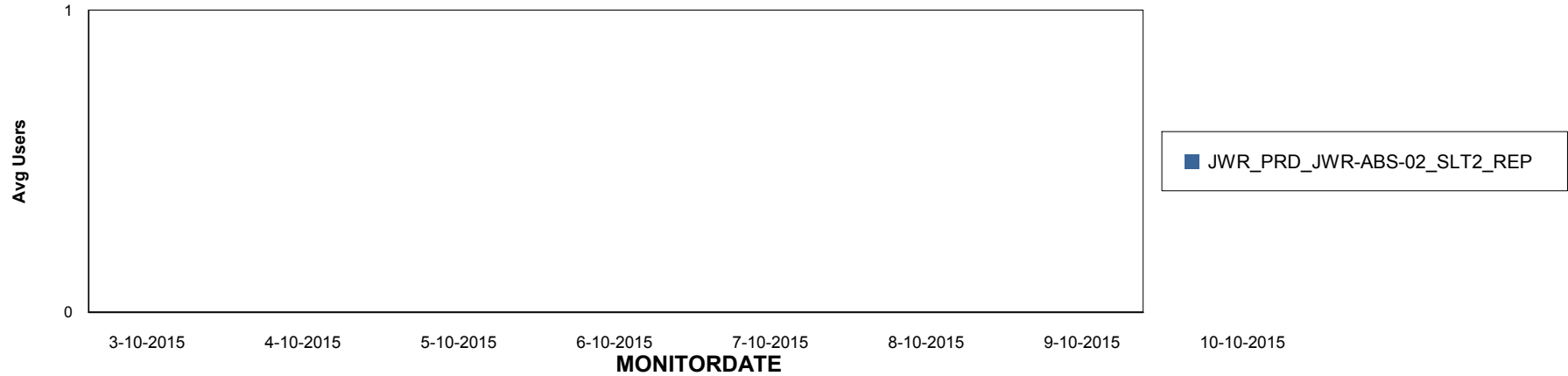
# Weekly SLA Customer Report

Customer JWR Production  
Database ID 43

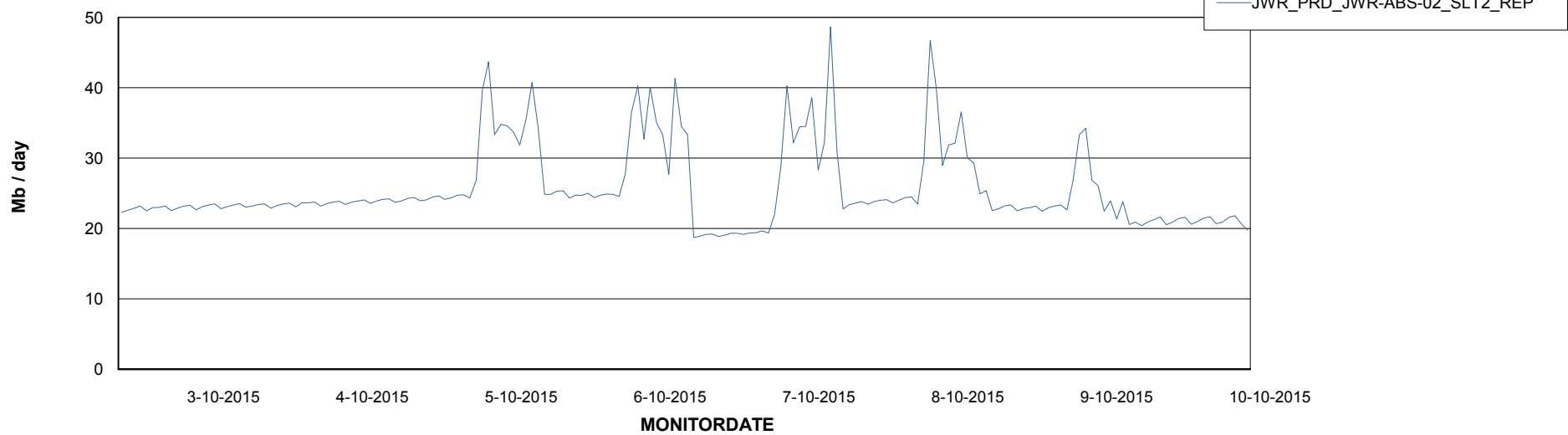


=====  
ABSolute Application ReportServer Services  
=====

## Disaster per ReportServer



## Avg memory used per ReportServer Service



# Weekly SLA Customer Report

Customer JWR Production  
Database ID 43



## Disaster per ABS component

