

# Weekly SLA Customer Report

Customer DFD Production  
 Database ID 39



=====  
 HARDDISK USAGE DFD\_PRD\_ABSWEB  
 =====

	Total disk space on C (GB)	Free disk space on C (GB)
10-10-2015	60	22
9-10-2015	60	22
8-10-2015	60	22
7-10-2015	60	22
6-10-2015	60	22
5-10-2015	60	22
4-10-2015	60	22

=====  
 HARDDISK USAGE DFD\_PRD\_BI1  
 =====

	Total disk space on C (GB)	Free disk space on C (GB)	Total disk space on E (GB)	Free disk space on E (GB)
10-10-2015	40	11	100	34
9-10-2015	40	11	100	34
8-10-2015	40	11	100	34
7-10-2015	40	11	100	34
6-10-2015	40	11	100	34
5-10-2015	40	11	100	34
4-10-2015	40	11	100	34

## Weekly SLA Customer Report

Customer      DFD Production  
 Database ID    39



=====  
 HARDDISK USAGE    DFD\_PRD\_ORACLE1  
 =====

	Total disk space on C (GB)	Free disk space on C (GB)	Total disk space on D (GB)	Free disk space on D (GB)	Total disk space on E (GB)	Free disk space on E (GB)	Total disk space on F (GB)	Free disk space on F (GB)
10-10-2015	78	49	479	356	400	263	800	724
9-10-2015	78	49	479	356	400	265	800	724
8-10-2015	78	49	479	356	400	269	800	724
7-10-2015	78	49	479	356	400	272	800	724
6-10-2015	78	49	479	356	400	276	800	724
5-10-2015	78	49	479	356	400	279	800	724
4-10-2015	78	49	479	356	400	281	800	724

=====  
 HARDDISK USAGE    DFD\_PRD\_ORACLE2  
 =====

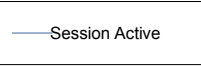
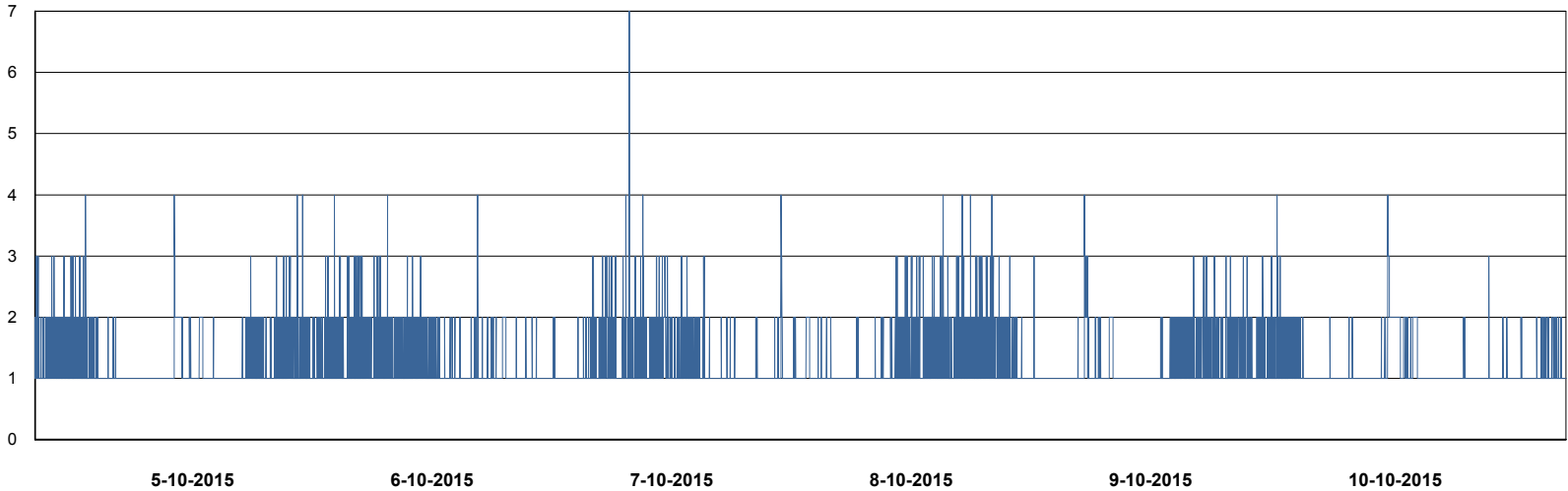
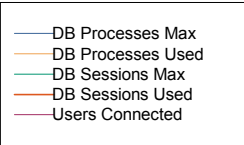
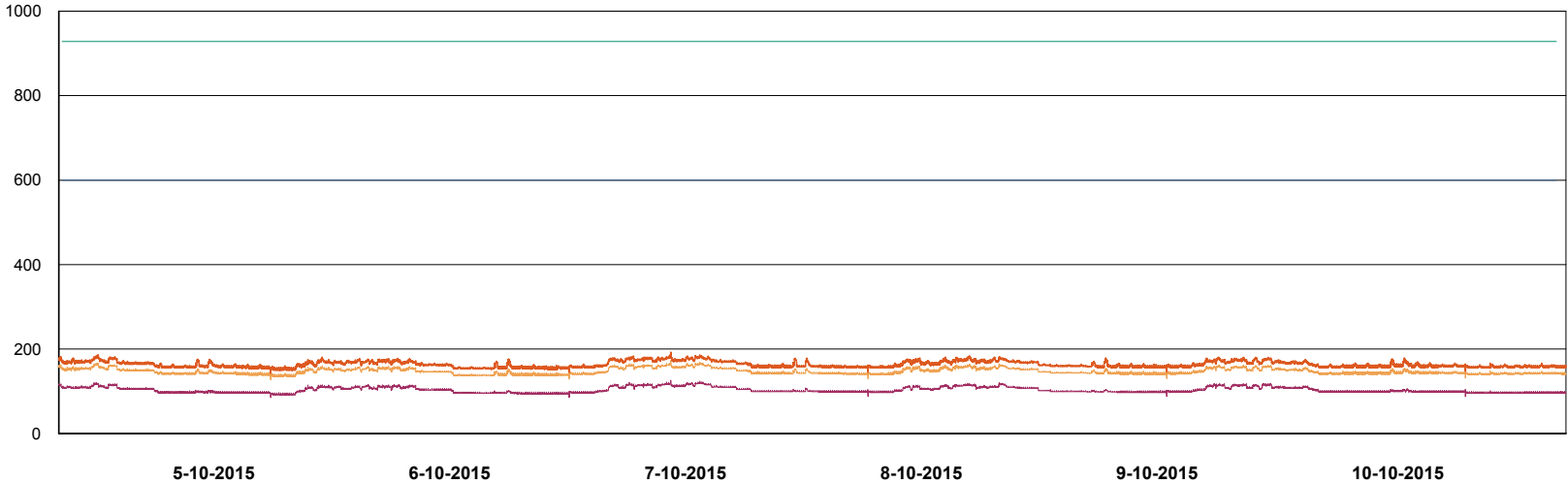
	Total disk space on C (GB)	Free disk space on C (GB)	Total disk space on D (GB)	Free disk space on D (GB)	Total disk space on E (GB)	Free disk space on E (GB)	Total disk space on F (GB)	Free disk space on F (GB)
10-10-2015	78	52	479	343	400	280	800	632
9-10-2015	78	52	479	343	400	274	800	646
8-10-2015	78	52	479	343	400	279	800	673
7-10-2015	78	52	479	343	400	288	800	679
6-10-2015	78	52	479	343	400	292	800	679
5-10-2015	78	52	479	343	400	295	800	679
4-10-2015	78	52	479	343	400	298	800	679

# Weekly SLA Customer Report

Customer DFD Production  
Database ID 39



DATABASE PERFORMANCE DFDDB\_Production

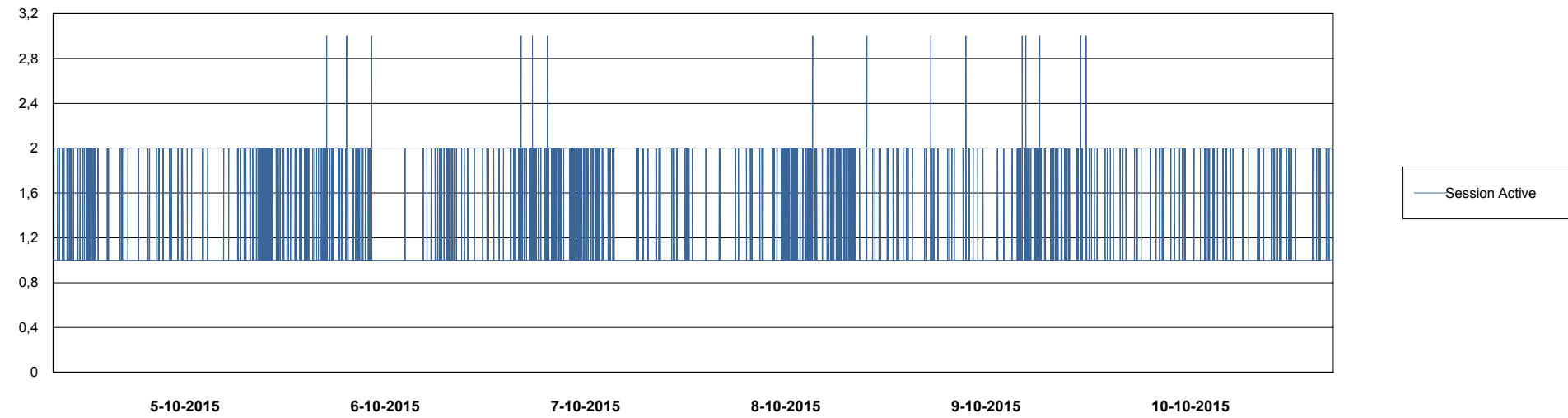
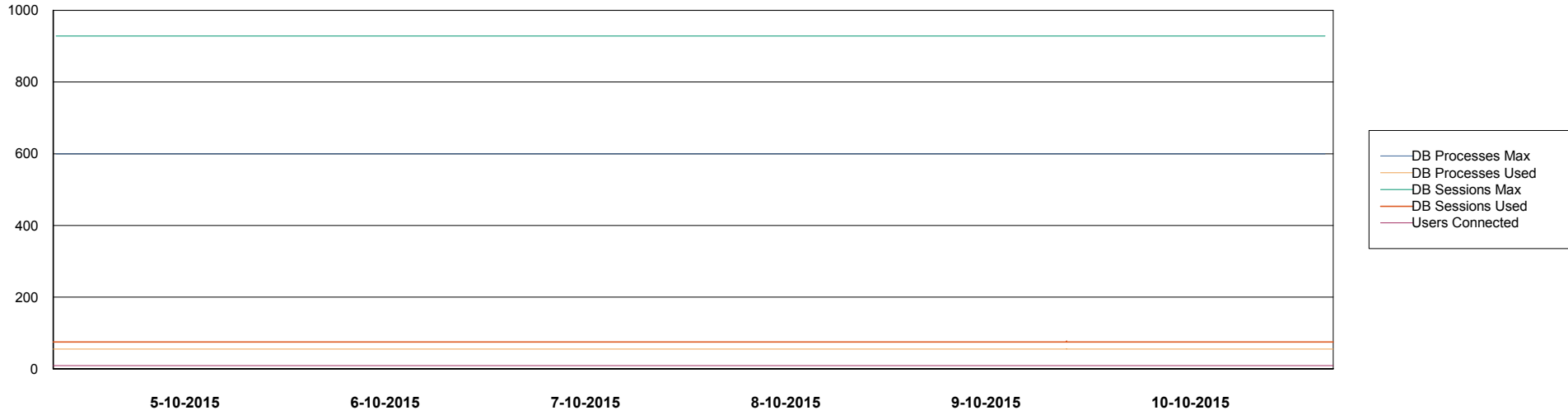


# Weekly SLA Customer Report

Customer DFD Production  
Database ID 39



DATABASE PERFORMANCE DFDDB\_Standby

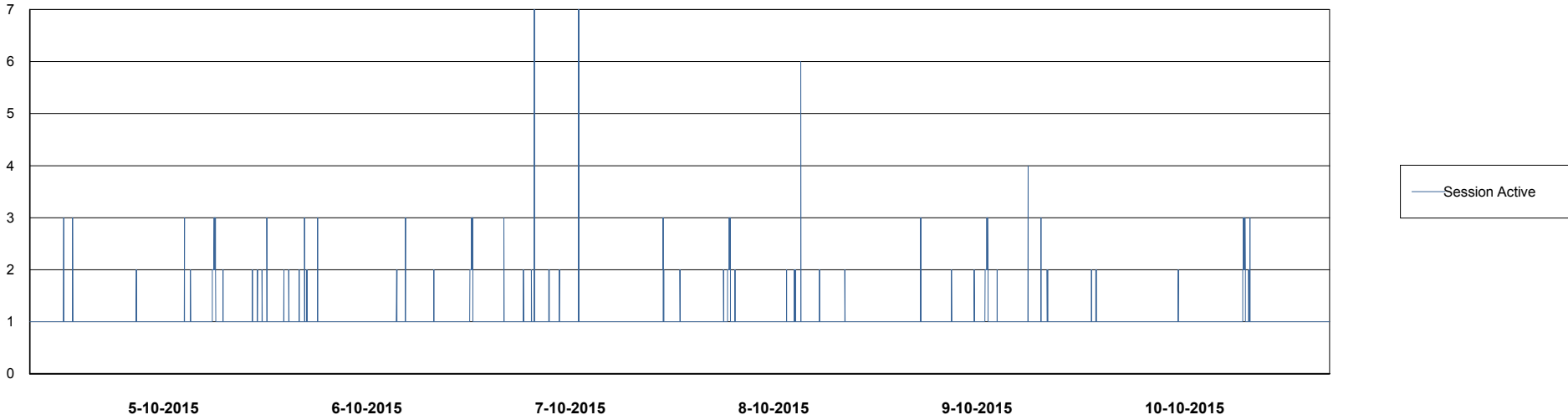
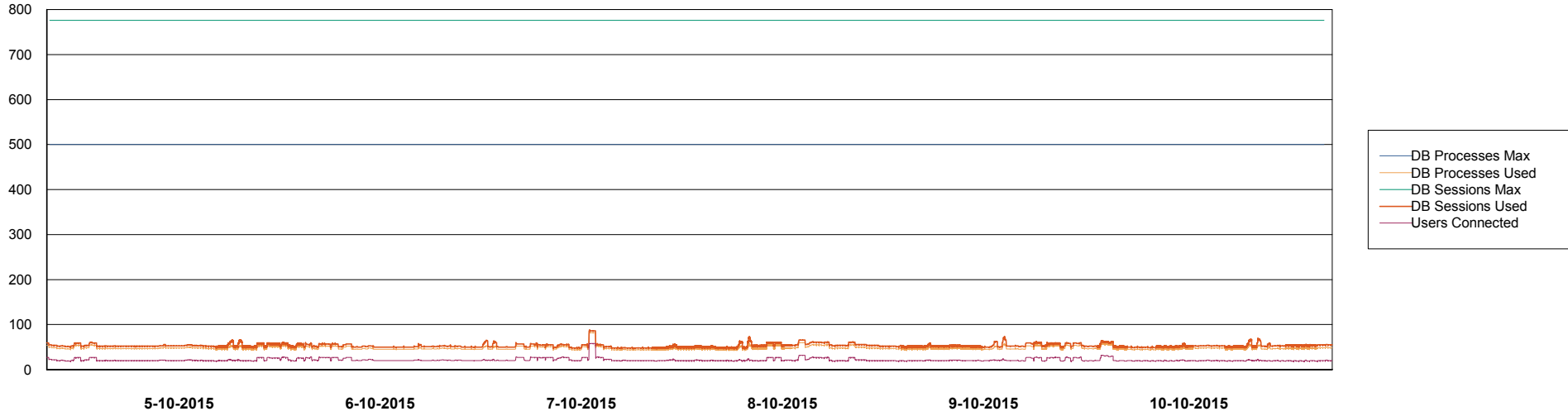


# Weekly SLA Customer Report

Customer DFD Production  
Database ID 39



DATABASE PERFORMANCE DFDDDBI\_Production



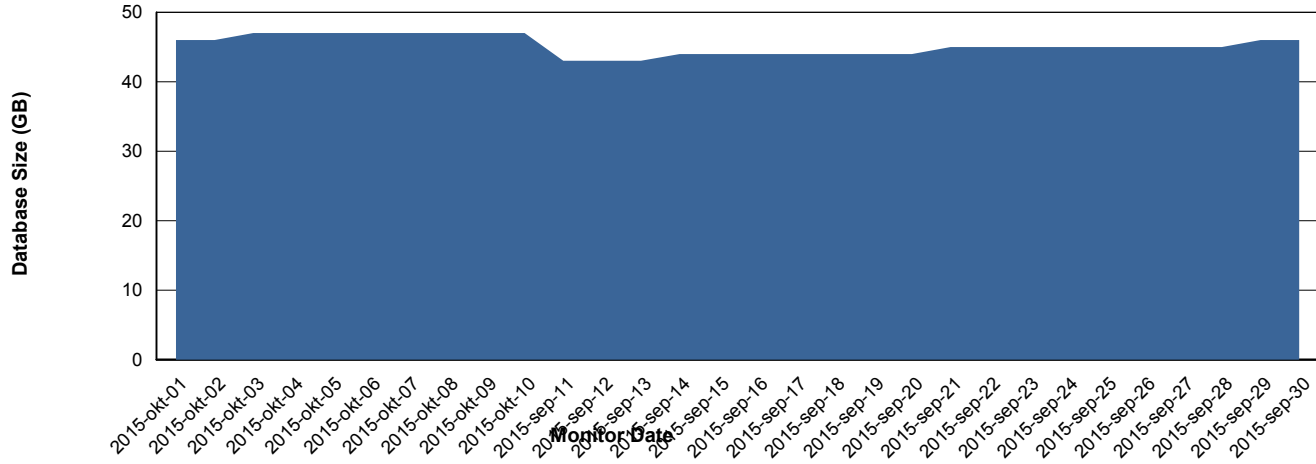
# Weekly SLA Customer Report

Customer DFD Production  
Database ID 39



=====  
DATABASE SIZE DFDDDB\_Production  
=====

## Database growth over last month



# Weekly SLA Customer Report

Customer DFD Production  
 Database ID 39



=====  
 DATABASE TABLESPACES DFDDDB\_Production  
 =====

TOTAL DATABASE SIZE PER TABLESPACE

Date	Tablespace Name	Filesize (Gb)	Usedsize (Gb)	Percentage free
10-10-2015	ABSDATA	21	15	29
	INDX	39	30	23
9-10-2015	ABSDATA	21	15	29
	INDX	39	30	23
8-10-2015	ABSDATA	21	15	29
	INDX	39	30	23
7-10-2015	ABSDATA	21	15	29
	INDX	39	30	23
6-10-2015	ABSDATA	21	15	29
	INDX	39	30	23
5-10-2015	ABSDATA	21	15	29
	INDX	39	30	23
4-10-2015	ABSDATA	21	15	29
	INDX	39	30	23

# Weekly SLA Customer Report

Customer DFD Production  
 Database ID 39



=====  
 DATABASE TABLESPACES DFDDDBBI\_Production  
 =====

TOTAL DATABASE SIZE PER TABLESPACE

Date	Tablespace Name	Filesize (Gb)	Usedsize (Gb)	Percentage free
10-10-2015	ABSDATA	10	7	30
	INDX	20	9	55
9-10-2015	ABSDATA	10	7	30
	INDX	20	9	55
8-10-2015	ABSDATA	10	6	40
	INDX	20	8	60
7-10-2015	ABSDATA	10	6	40
	INDX	20	8	60
6-10-2015	ABSDATA	10	6	40
	INDX	20	8	60
5-10-2015	ABSDATA	10	6	40
	INDX	20	8	60
4-10-2015	ABSDATA	10	6	40
	INDX	20	8	60

=====  
 STANDBY DATABASE HEALTH DFD Production  
 =====

Recovery lag for last 7 days



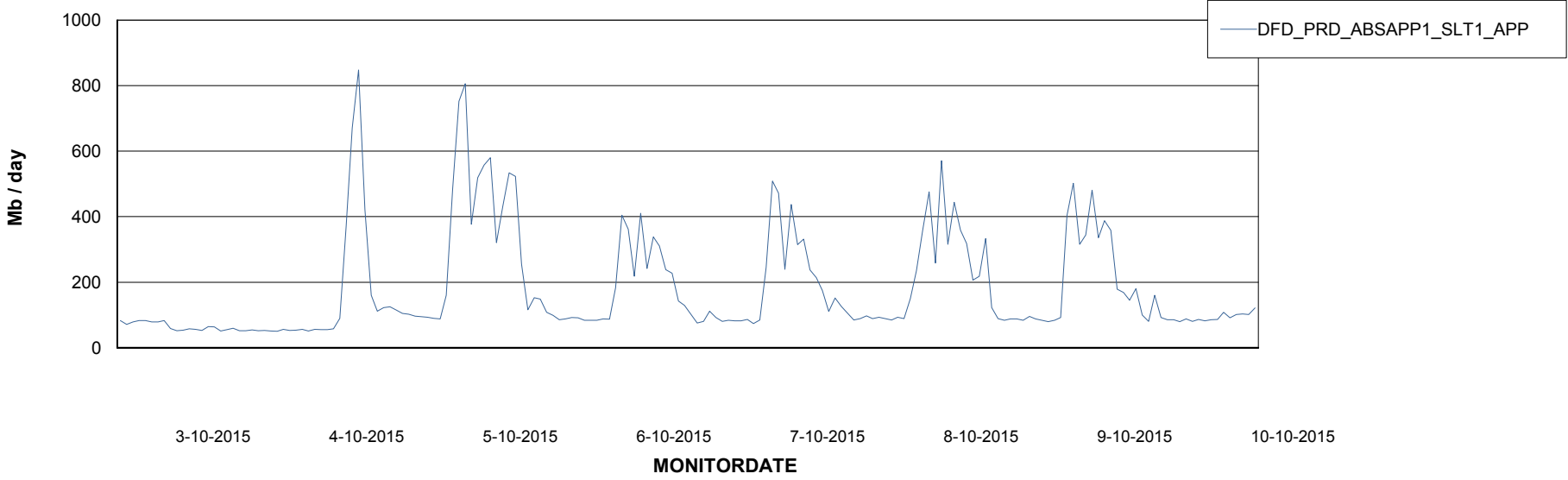
# Weekly SLA Customer Report

Customer DFD Production  
Database ID 39



=====  
ABSolute Application Server Services  
=====

### Avg memory used per ABS Server Service



# Weekly SLA Customer Report

Customer DFD Production  
Database ID 39



=====  
ABSolute Application ReportServer Services  
=====

### Avg memory used per ReportServer Service

