

Weekly SLA Customer Report

Customer NIX_Production
 Database ID 51



=====
 HARDDISK USAGE NIX_PRD_ABSAPP1
 =====

	Total disk space on C (GB)	Free disk space on C (GB)
3-10-2015	200	176
2-10-2015	200	177
1-10-2015	200	177
30-9-2015	200	177
29-9-2015	200	177
28-9-2015	200	177
27-9-2015	200	177

=====
 HARDDISK USAGE NIX_PRD_ABSAPP2
 =====

	Total disk space on C (GB)	Free disk space on C (GB)
3-10-2015	200	177
2-10-2015	200	177
1-10-2015	200	177
30-9-2015	200	177
29-9-2015	200	177
28-9-2015	200	177
27-9-2015	200	177

Weekly SLA Customer Report

Customer NIX_Production
 Database ID 51



=====
 HARDDISK USAGE NIX_PRD_ABSWEB01
 =====

	Total disk space on C (GB)	Free disk space on C (GB)
3-10-2015	300	281
2-10-2015	300	281
1-10-2015	300	281
30-9-2015	300	281
29-9-2015	300	281
28-9-2015	300	281
27-9-2015	300	281

=====
 HARDDISK USAGE NIX_PRD_ORACLE_B11
 =====

	Total disk space on C (GB)	Free disk space on C (GB)	Total disk space on E (GB)	Free disk space on E (GB)	Total disk space on F (GB)	Free disk space on F (GB)	Total disk space on G (GB)	Free disk space on G (GB)
3-10-2015	279	204	558	387	558	457	279	235
2-10-2015	279	204	558	387	558	458	279	235
1-10-2015	279	204	558	387	558	458	279	236
30-9-2015	279	204	558	387	558	458	279	236
29-9-2015	279	204	558	387	558	458	279	236
28-9-2015	279	204	558	387	558	458	279	236
27-9-2015	279	204	558	387	558	458	279	236

Weekly SLA Customer Report

Customer NIX_Production
 Database ID 51



=====
 HARDDISK USAGE NIX_PRD_ORCDB1
 =====

	Total disk space on C (GB)	Free disk space on C (GB)	Total disk space on E (GB)	Free disk space on E (GB)	Total disk space on F (GB)	Free disk space on F (GB)	Total disk space on G (GB)	Free disk space on G (GB)
3-10-2015	279	95	558	492	558	457	279	150
2-10-2015	279	95	558	492	558	457	279	152
1-10-2015	279	107	558	492	558	457	279	67
30-9-2015	279	124	558	492	558	457	279	40
29-9-2015	279	124	558	492	558	457	279	43
28-9-2015	279	124	558	492	558	457	279	45
27-9-2015	279	124	558	493	558	457	279	46

=====
 HARDDISK USAGE NIX_PRD_ORCDB2
 =====

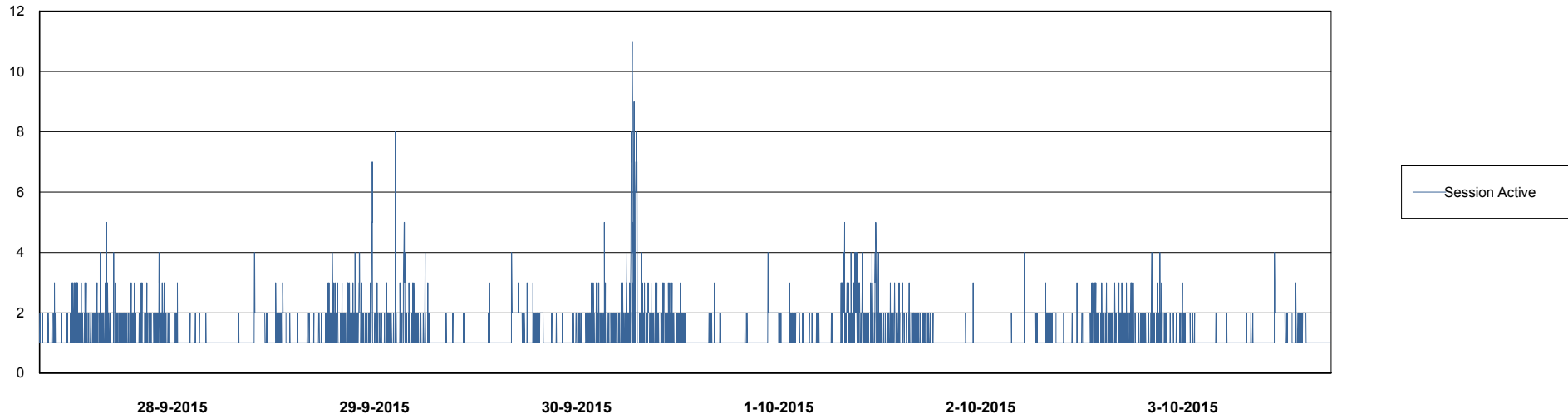
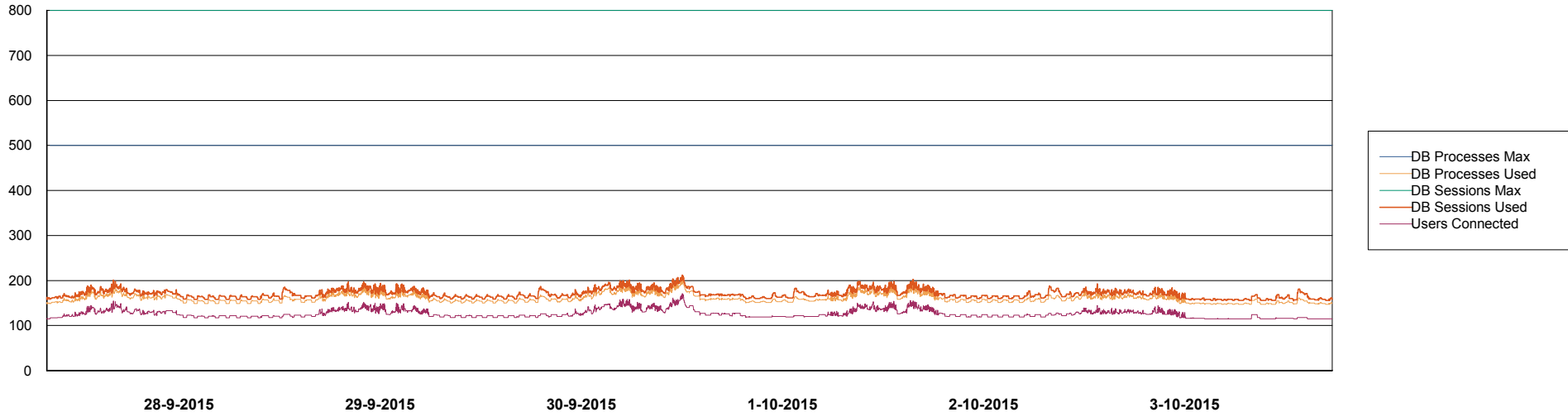
	Total disk space on C (GB)	Free disk space on C (GB)	Total disk space on E (GB)	Free disk space on E (GB)	Total disk space on F (GB)	Free disk space on F (GB)	Total disk space on G (GB)	Free disk space on G (GB)
3-10-2015	279	237	558	401	558	457	279	66
2-10-2015	279	237	558	401	558	457	279	67
1-10-2015	279	237	558	401	558	457	279	69
30-9-2015	279	237	558	401	558	457	279	74
29-9-2015	279	237	558	403	558	457	279	77
28-9-2015	279	237	558	403	558	457	279	80
27-9-2015	279	237	558	403	558	457	279	81

Weekly SLA Customer Report

Customer NIX_Production
Database ID 51



DATABASE PERFORMANCE NIXDB_Production



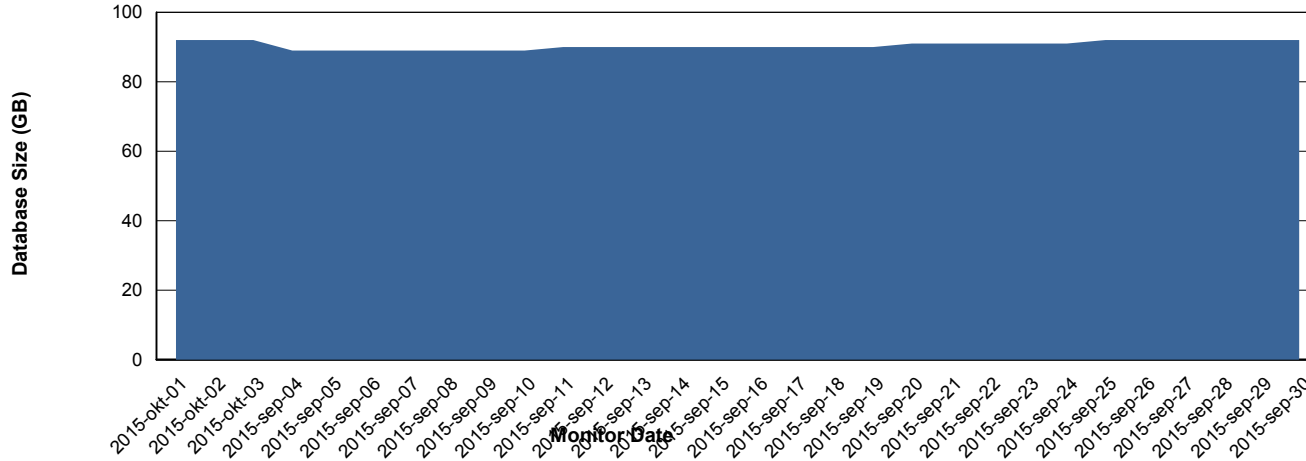
Weekly SLA Customer Report

Customer NIX_Production
 Database ID 51



=====
 DATABASE SIZE NIXDB_Production
 =====

Database growth over last month



=====
 DATABASE TABLESPACES NIXDB_Production
 =====

TOTAL DATABASE SIZE PER TABLESPACE

Date	Tablespace Name	Filesize (Gb)	Usedsize (Gb)	Percentage free
3-10-2015	ABSDATA	50	35	30
	INDX	100	56	44
2-10-2015	ABSDATA	50	35	30
	INDX	100	56	44
1-10-2015	ABSDATA	50	35	30
	INDX	100	55	45
30-9-2015	ABSDATA	50	35	30
	INDX	100	55	45
29-9-2015	ABSDATA	50	35	30
	INDX	100	55	45
28-9-2015	ABSDATA	50	35	30
	INDX	100	55	45
27-9-2015	ABSDATA	50	35	30
	INDX	100	55	45

Weekly SLA Customer Report

Customer NIX_Production
Database ID 51



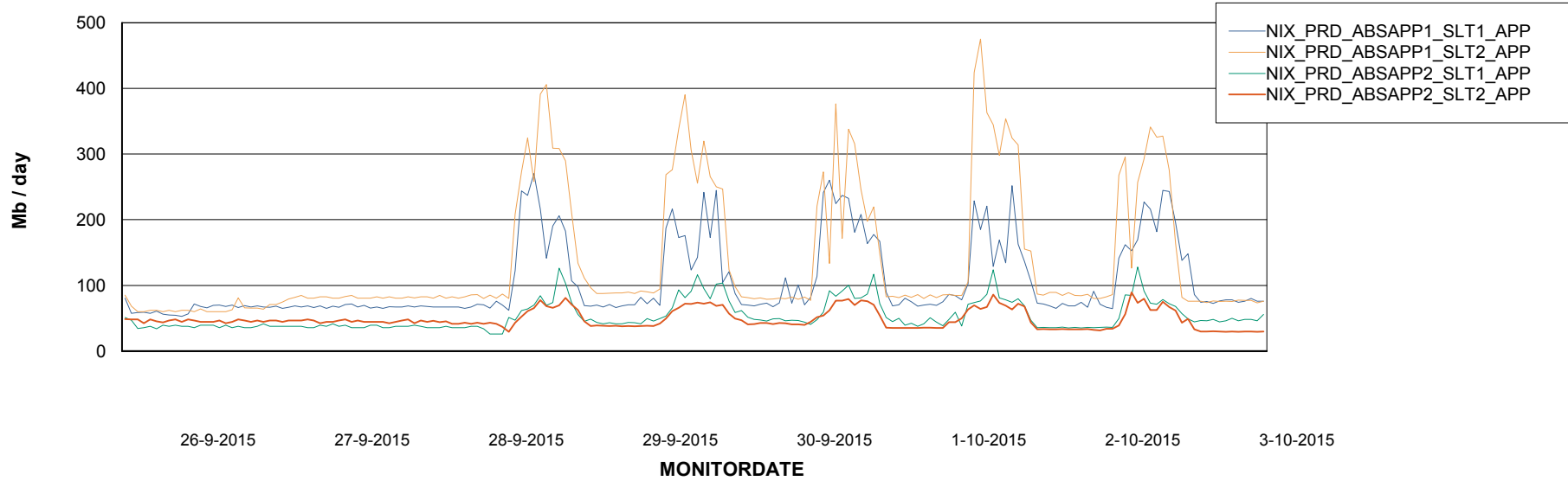
Weekly SLA Customer Report

Customer NIX_Production
Database ID 51



=====
ABSolute Application Server Services
=====

Avg memory used per ABS Server Service



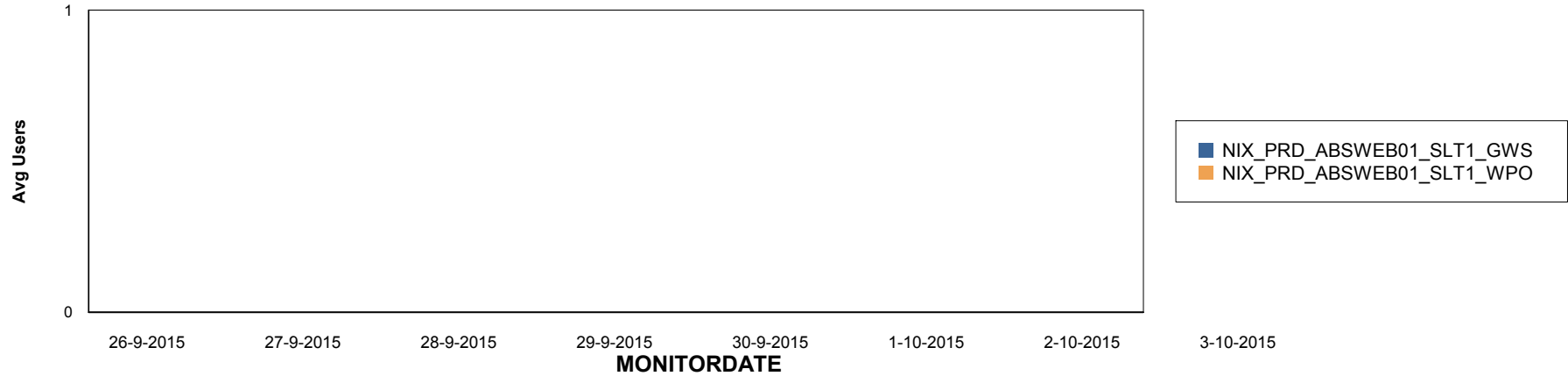
Weekly SLA Customer Report

Customer NIX_Production
Database ID 51

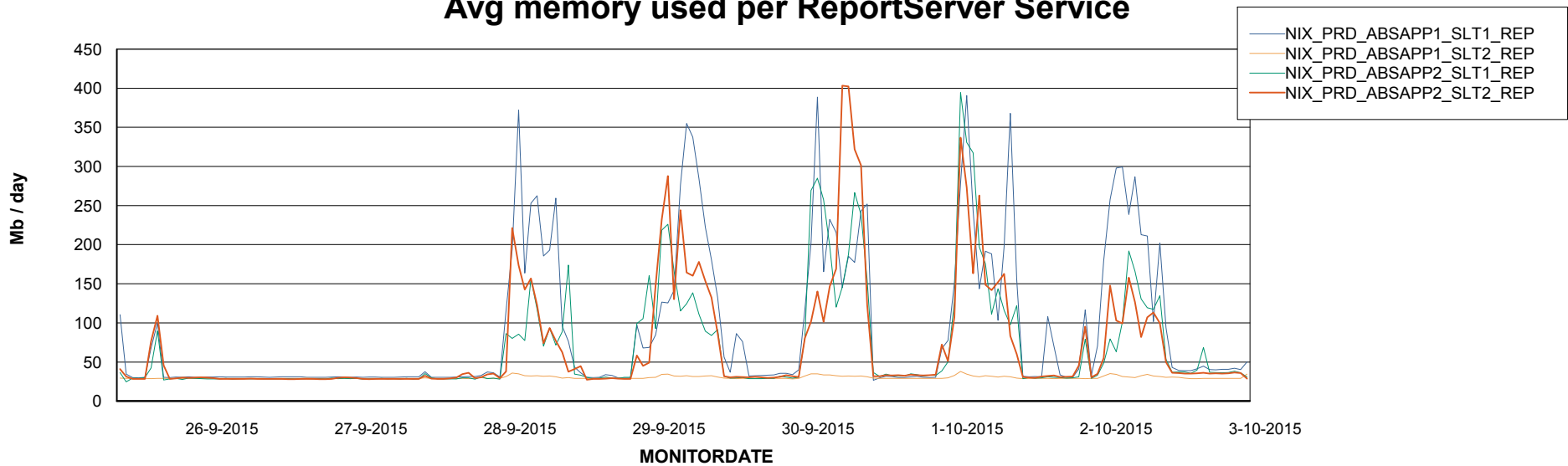


=====
ABSolute Application ReportServer Services
=====

Disaster per ReportServer



Avg memory used per ReportServer Service



Weekly SLA Customer Report

Customer NIX_Production
Database ID 51



Disaster per ABS component

