

Weekly SLA Customer Report

Customer JWR Production
 Database ID 43



=====
 HARDDISK USAGE JWR_PRD_JWR-ABS-01
 =====

	Used disk space on / (GB)	Total disk space on / (GB)	Free disk space on / (GB)
3-10-2015	29	49	18
2-10-2015	29	49	18
1-10-2015	29	49	18
30-9-2015	29	49	18
29-9-2015	31	49	16
28-9-2015	31	49	15
27-9-2015	31	49	15

=====
 HARDDISK USAGE JWR_PRD_JWR-ABS-02
 =====

	Used disk space on / (GB)	Total disk space on / (GB)	Free disk space on / (GB)
3-10-2015	34	49	13
2-10-2015	34	49	13
1-10-2015	34	49	13
30-9-2015	34	49	13
29-9-2015	34	49	13
28-9-2015	34	49	13
27-9-2015	34	49	13

Weekly SLA Customer Report

Customer JWR Production
 Database ID 43



=====
 HARDDISK USAGE JWR_PRD_JWR-ODB-01
 =====

	Used disk space on / (GB)	Total disk space on / (GB)	Free disk space on / (GB)
3-10-2015	97	148	44
2-10-2015	97	148	43
1-10-2015	97	148	43
30-9-2015	97	148	43
29-9-2015	97	148	43
28-9-2015	97	148	43
27-9-2015	97	148	44

=====
 HARDDISK USAGE JWR_PRD_JWR-ODB-02
 =====

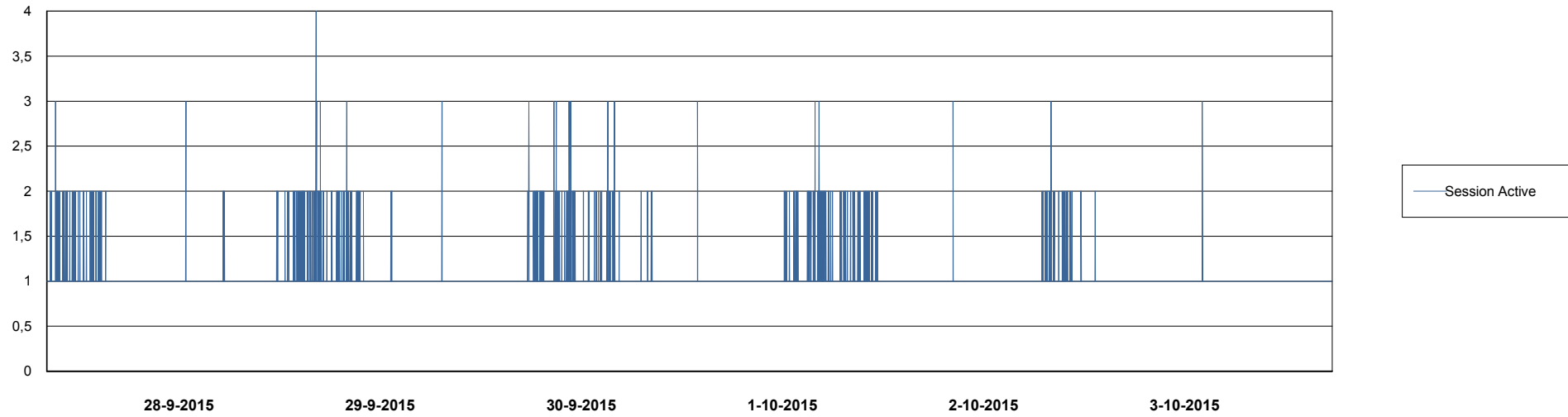
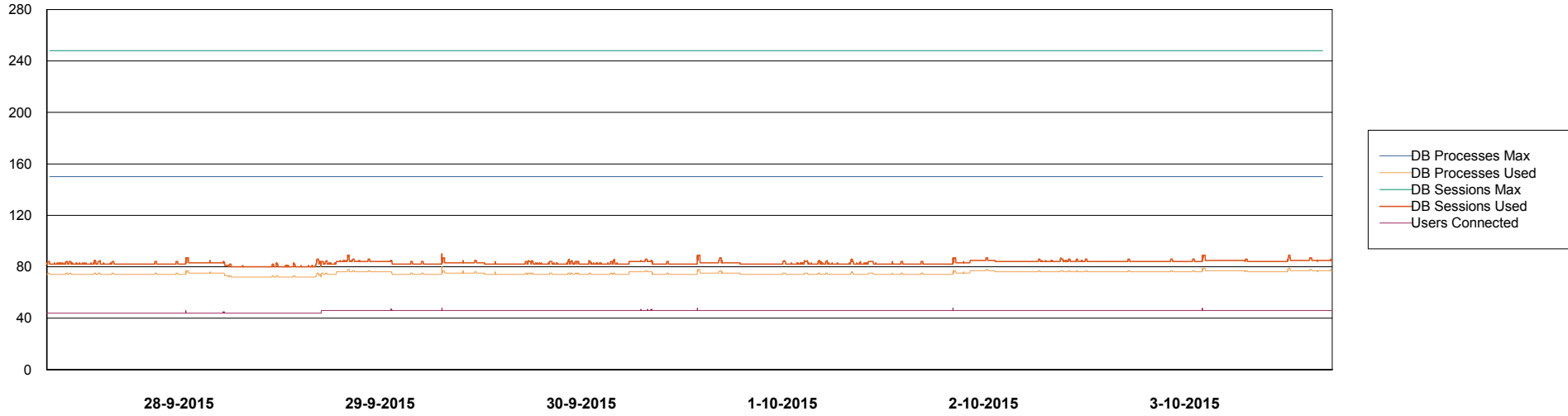
	Used disk space on / (GB)	Total disk space on / (GB)	Free disk space on / (GB)
3-10-2015	95	138	36
2-10-2015	95	138	36
1-10-2015	95	138	36
30-9-2015	95	138	36
29-9-2015	95	138	36
28-9-2015	95	138	36
27-9-2015	94	138	37

Weekly SLA Customer Report

Customer JWR Production
Database ID 43



DATABASE PERFORMANCE JWRDB_Production



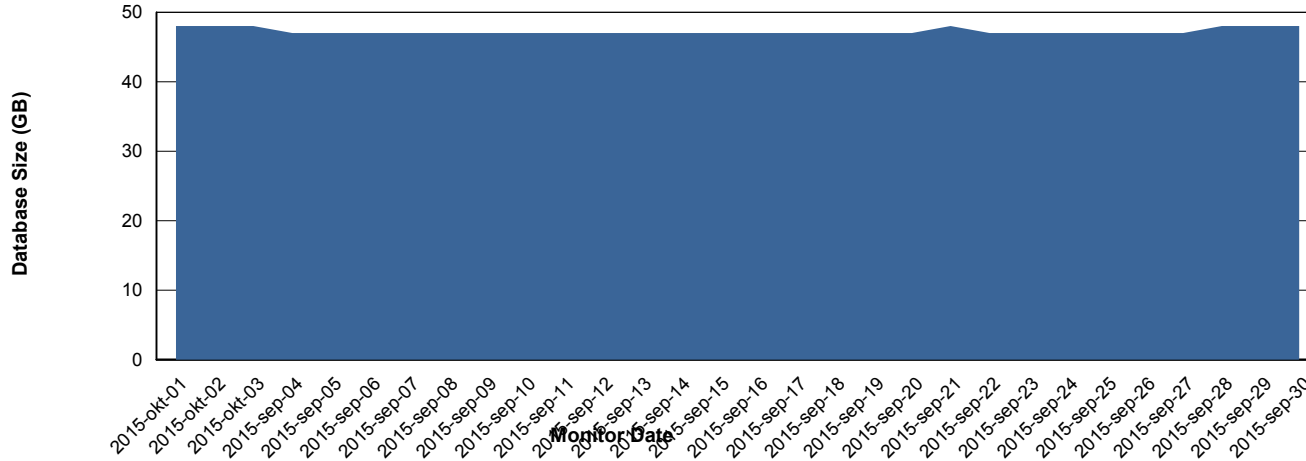
Weekly SLA Customer Report

Customer JWR Production
 Database ID 43



=====
 DATABASE SIZE JWRDB_Production
 =====

Database growth over last month



=====
 DATABASE TABLESPACES JWRDB_Production
 =====

TOTAL DATABASE SIZE PER TABLESPACE

Date	Tablespace Name	Filesize (Gb)	Usedsize (Gb)	Percentage free
3-10-2015	ABSDATA	18	13	28
	INDX	40	33	18
2-10-2015	ABSDATA	18	13	28
	INDX	40	33	18
1-10-2015	ABSDATA	18	13	28
	INDX	40	33	18
30-9-2015	ABSDATA	18	13	28
	INDX	40	33	18
29-9-2015	ABSDATA	18	13	28
	INDX	40	33	18
28-9-2015	ABSDATA	18	13	28
	INDX	40	33	18
27-9-2015	ABSDATA	18	13	28
	INDX	40	33	18

Weekly SLA Customer Report

Customer JWR Production
Database ID 43



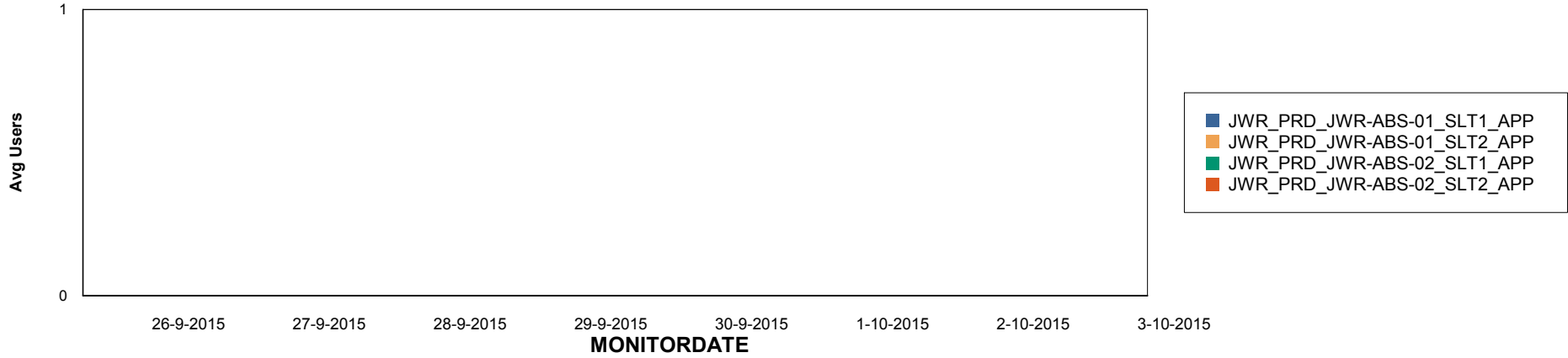
Weekly SLA Customer Report

Customer JWR Production
Database ID 43

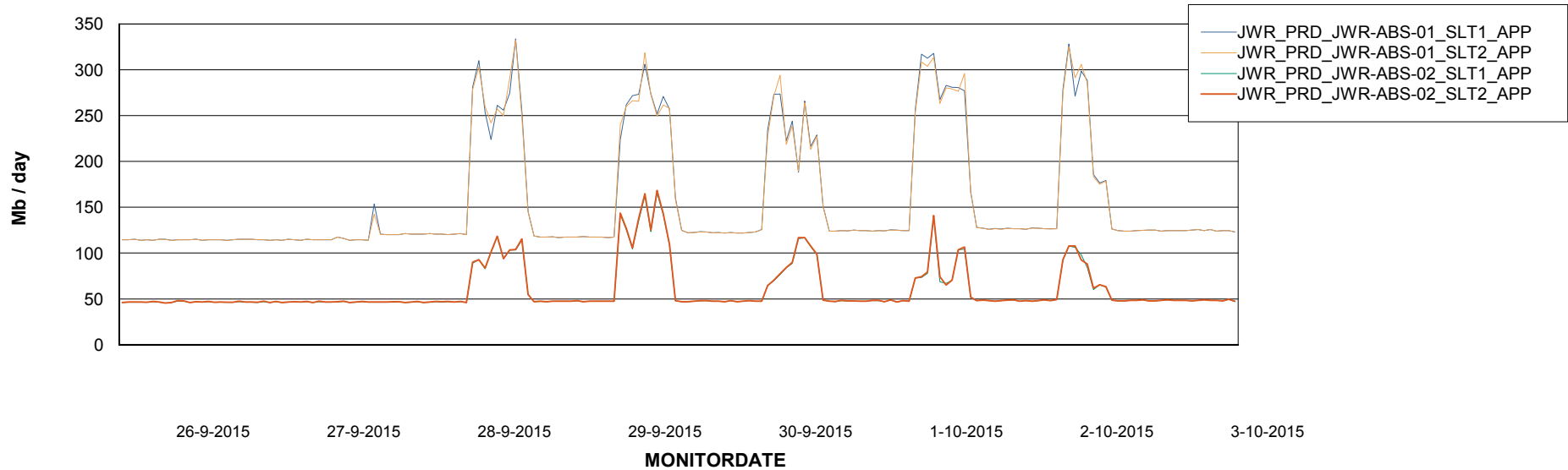


=====
ABSSolute Application Server Services
=====

Disaster per ABS Server



Avg memory used per ABS Server Service



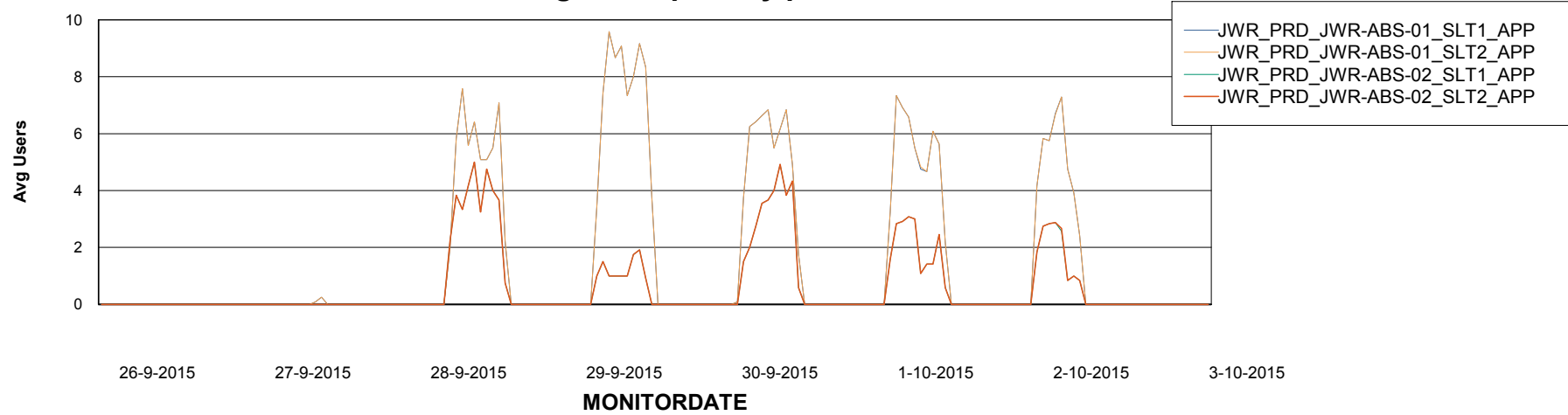
Weekly SLA Customer Report

Customer JWR Production
Database ID 43



=====
ABSolute Application Server Services
=====

Avg users per day per ABS server



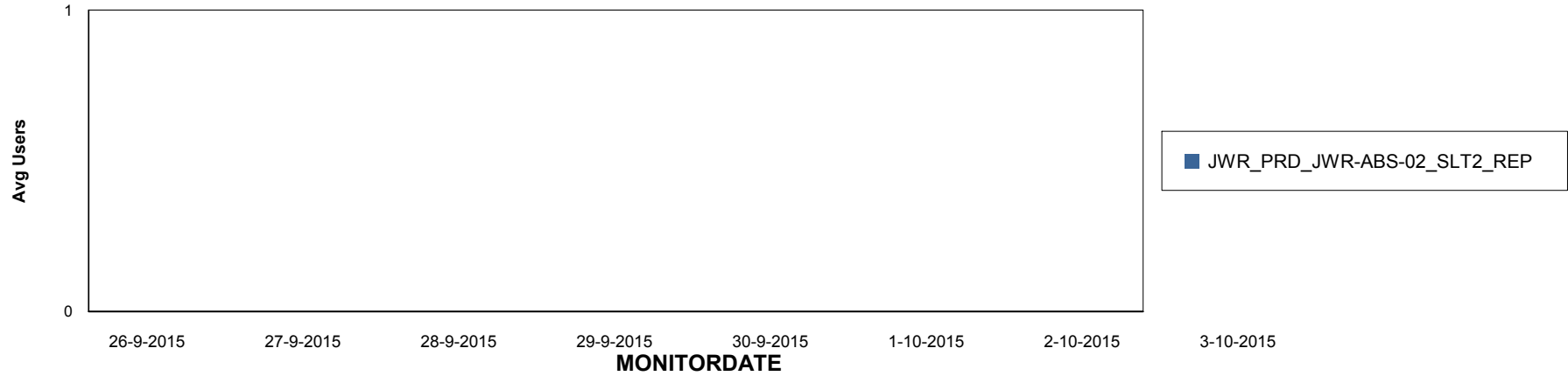
Weekly SLA Customer Report

Customer JWR Production
Database ID 43

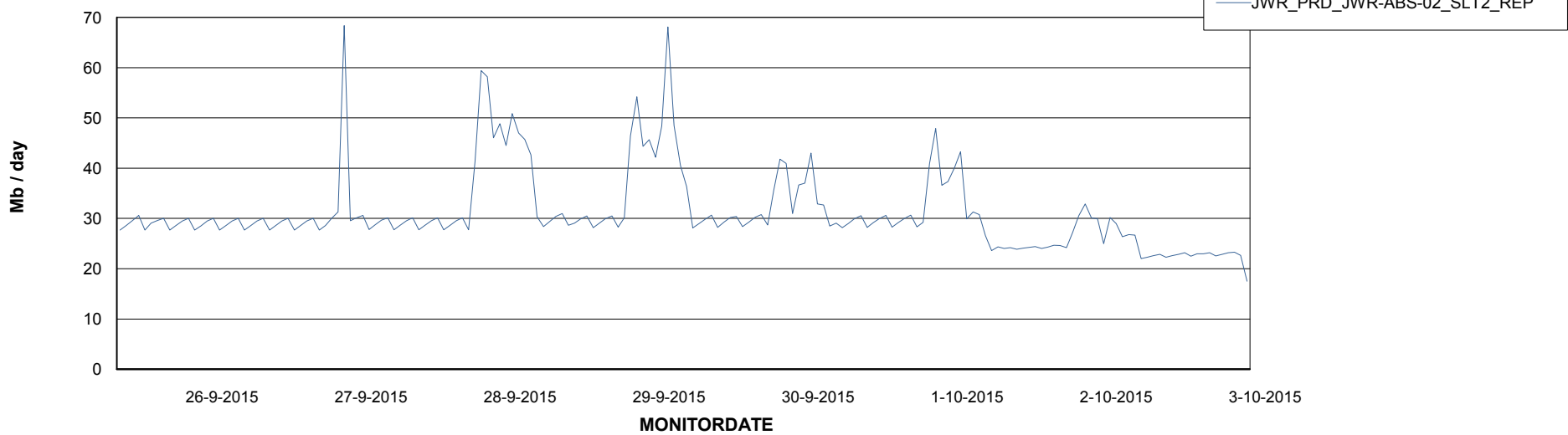


=====
ABSolute Application ReportServer Services
=====

Disaster per ReportServer



Avg memory used per ReportServer Service



Weekly SLA Customer Report

Customer JWR Production
Database ID 43



Disaster per ABS component

