

Weekly SLA Customer Report

Customer FIS_Production
 Database ID 46



=====
 HARDDISK USAGE FIS_PRD_ORACLE1
 =====

	Total disk space on C (GB)	Free disk space on C (GB)	Total disk space on L (GB)	Free disk space on L (GB)	Total disk space on O (GB)	Free disk space on O (GB)
3-10-2015	279	223	279	156	186	30
2-10-2015	279	223	279	165	186	30
1-10-2015	279	223	279	193	186	30
30-9-2015	279	223	279	194	186	30
29-9-2015	279	223	279	194	186	30
28-9-2015	279	223	279	194	186	30
27-9-2015	279	223	279	195	186	30

=====
 HARDDISK USAGE FIS_PRD_ORACLE2
 =====

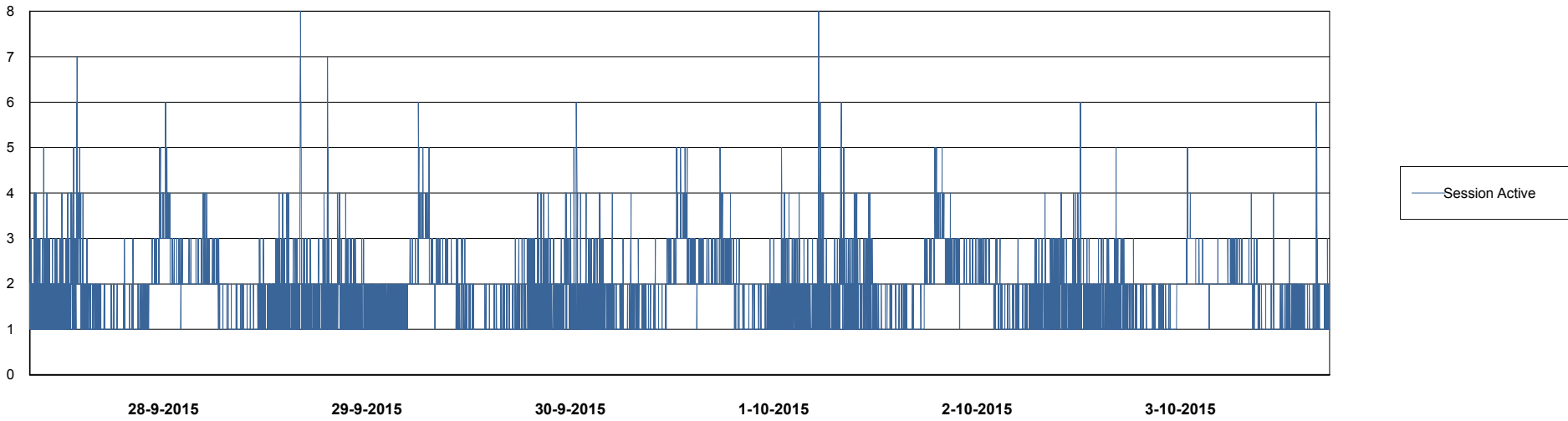
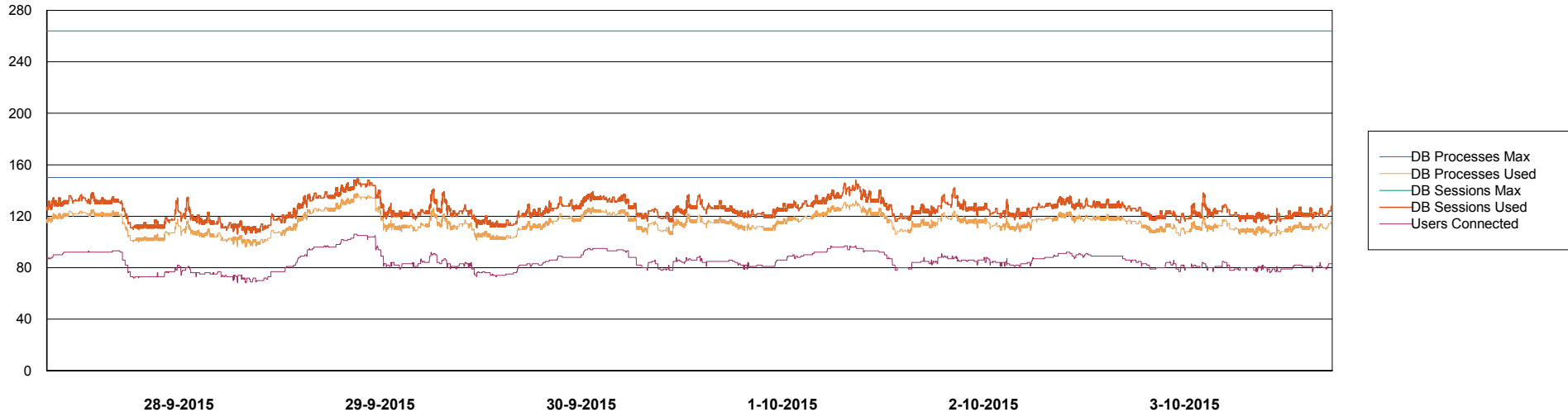
	Total disk space on C (GB)	Free disk space on C (GB)	Total disk space on L (GB)	Free disk space on L (GB)	Total disk space on O (GB)	Free disk space on O (GB)
3-10-2015	279	180	279	111	186	30
2-10-2015	279	180	279	111	186	30
1-10-2015	279	181	279	112	186	30
30-9-2015	279	181	279	112	186	30
29-9-2015	279	181	279	112	186	30
28-9-2015	279	182	279	112	186	30
27-9-2015	279	182	279	113	186	30

Weekly SLA Customer Report

Customer FIS_Production
Database ID 46



DATABASE PERFORMANCE FISDB_Production

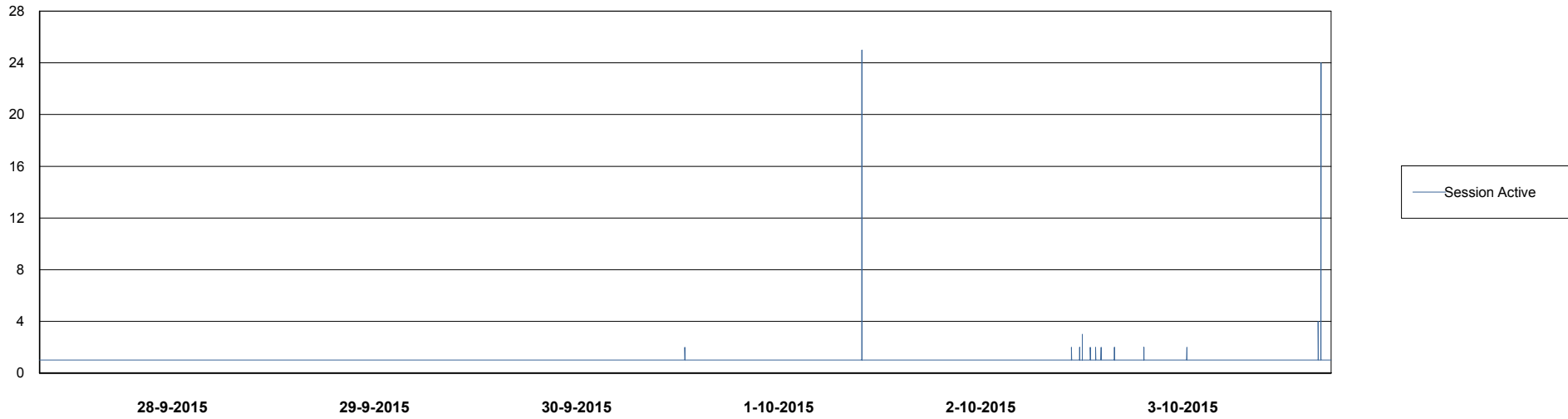
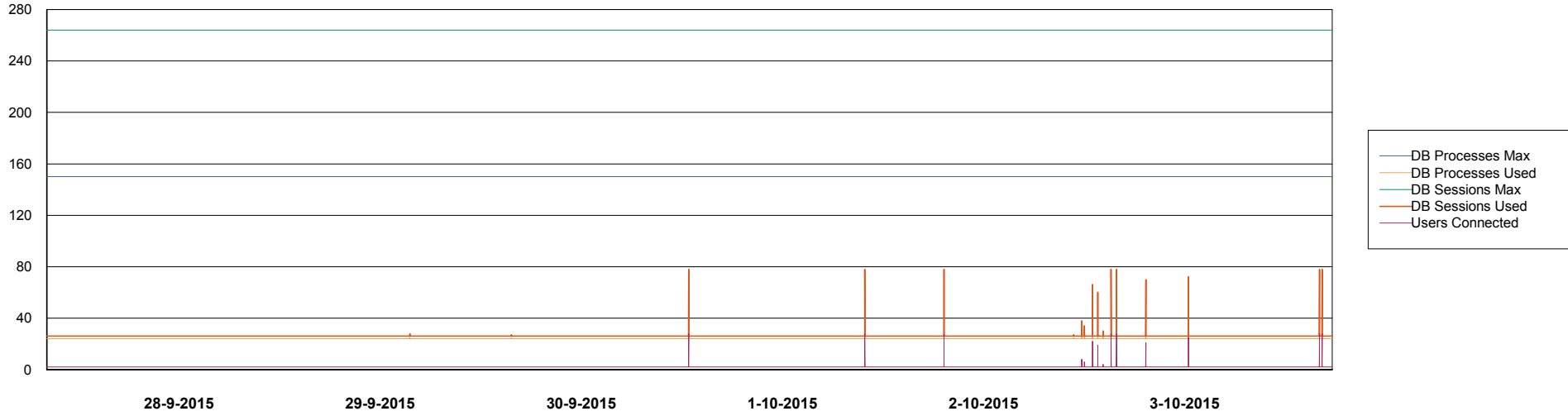


Weekly SLA Customer Report

Customer FIS_Production
Database ID 46



DATABASE PERFORMANCE FISDB_Standby



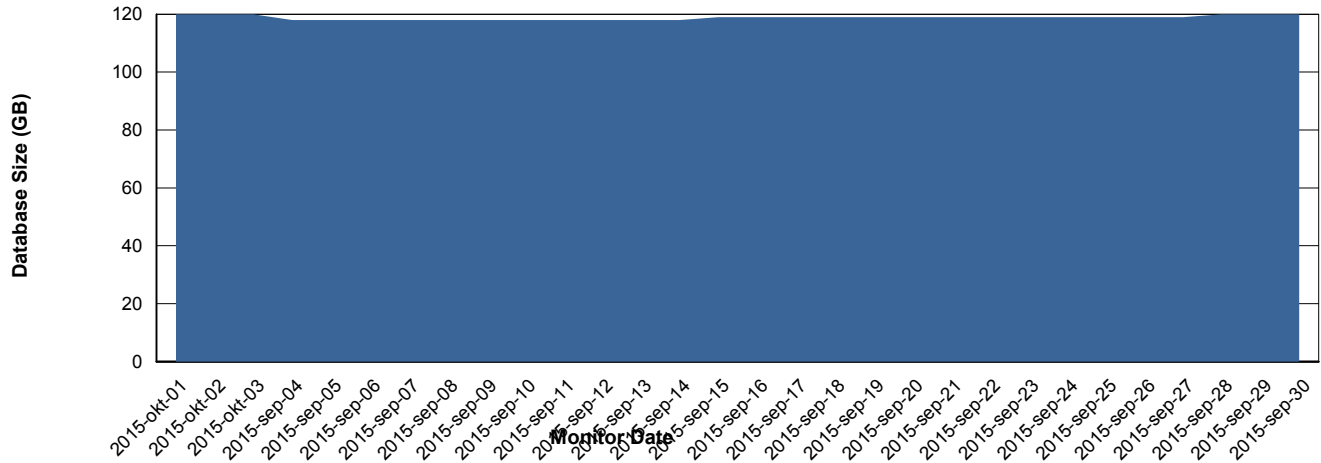
Weekly SLA Customer Report

Customer FIS_Production
 Database ID 46



=====
 DATABASE SIZE FISDB_Production
 =====

Database growth over last month



=====
 DATABASE TABLESPACES FISDB_Production
 =====

TOTAL DATABASE SIZE PER TABLESPACE

Date	Tablespace Name	Filesize (Gb)	Usedsize (Gb)	Percentage free
3-10-2015	ABSDATA	62	53	15
	INDX	79	61	23
2-10-2015	ABSDATA	62	53	15
	INDX	79	61	23
1-10-2015	ABSDATA	62	53	15
	INDX	79	61	23
30-9-2015	ABSDATA	62	53	15
	INDX	79	60	24
29-9-2015	ABSDATA	62	53	15
	INDX	79	60	24
28-9-2015	ABSDATA	62	53	15
	INDX	79	60	24
27-9-2015	ABSDATA	62	53	15
	INDX	79	60	24

