

Weekly SLA Customer Report

Customer AUJ_Production
 Database ID 41



=====
 HARDDISK USAGE AUJ_PRD_ORACLE_BI1
 =====

	Used disk space on \$1 (GB)	Total disk space on \$1 (GB)	Free disk space on \$1 (GB)
3-10-2015	466	526	32
2-10-2015	462	526	37
1-10-2015	432	526	66
30-9-2015	418	526	81
29-9-2015	417	526	82
28-9-2015	416	526	82
27-9-2015	419	526	79

=====
 HARDDISK USAGE AUJ_PRD_ORACLE1
 =====

	Used disk space on \$1 (GB)	Total disk space on \$1 (GB)	Free disk space on \$1 (GB)	Used disk space on /abs2 (GB)	Used disk space on /bk (GB)
3-10-2015	66	290	67	256	801
2-10-2015	66	295	67	256	808
1-10-2015	66	290	67	256	808
30-9-2015	66	290	67	256	759
29-9-2015	66	290	67	256	714
28-9-2015	66	290	67	256	713
27-9-2015	65	290	67	256	712

Weekly SLA Customer Report

Customer AUJ_Production
 Database ID 41



=====
 HARDDISK USAGE AUJ_PRD_ORACLE2
 =====

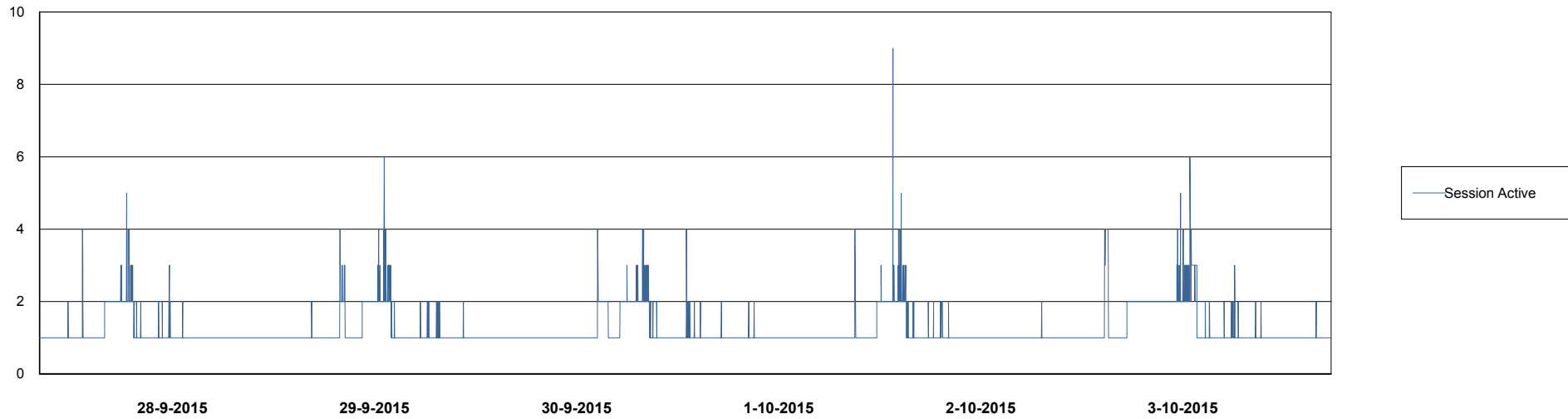
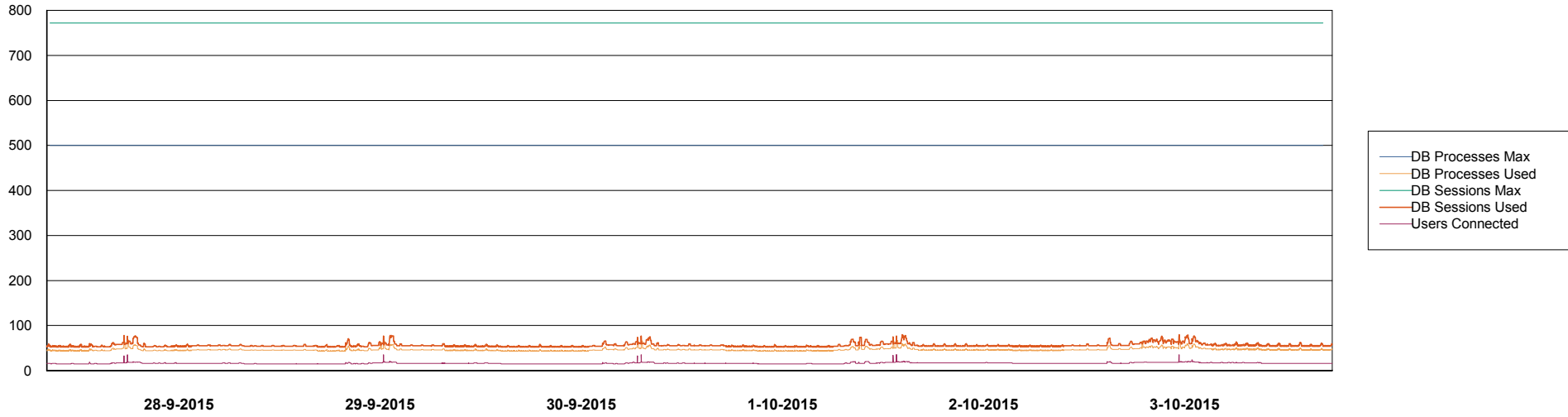
	Used disk space on \$1 (GB)	Total disk space on \$1 (GB)	Free disk space on \$1 (GB)
3-10-2015	71	174	98
2-10-2015	71	171	98
1-10-2015	71	174	98
30-9-2015	71	174	98
29-9-2015	70	174	98
28-9-2015	70	174	98
27-9-2015	69	174	98

Weekly SLA Customer Report

Customer AUJ_Production
Database ID 41



DATABASE PERFORMANCE AUJDB_BI

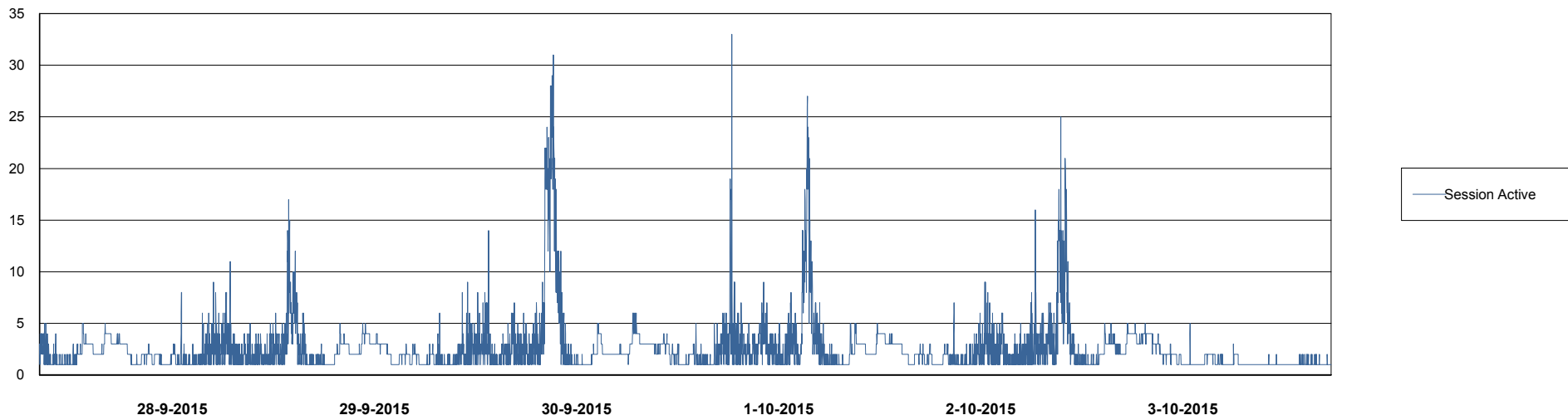
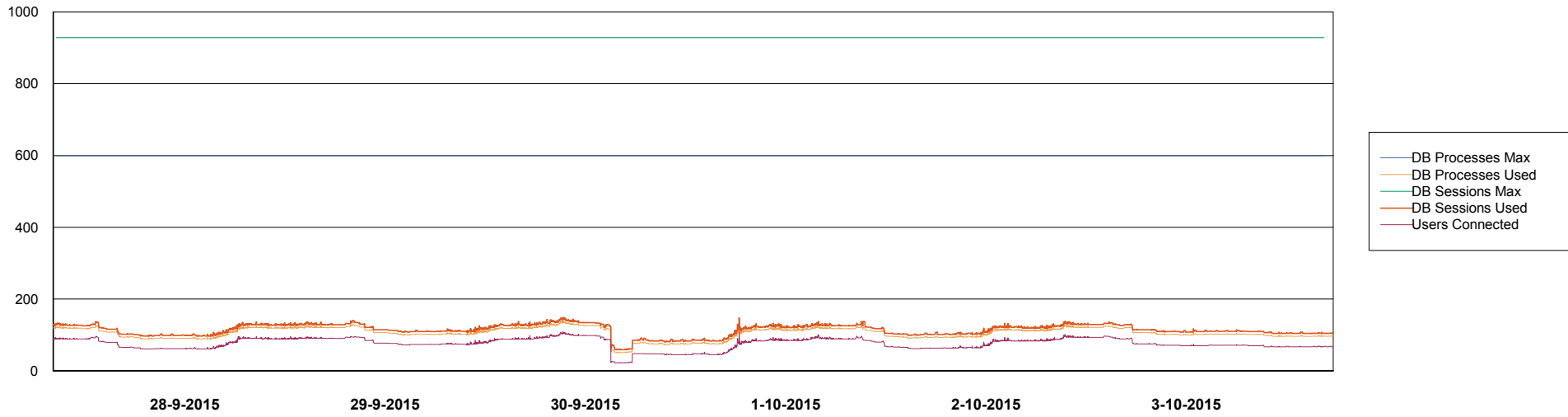


Weekly SLA Customer Report

Customer AUJ_Production
Database ID 41



DATABASE PERFORMANCE AUJDB_Production

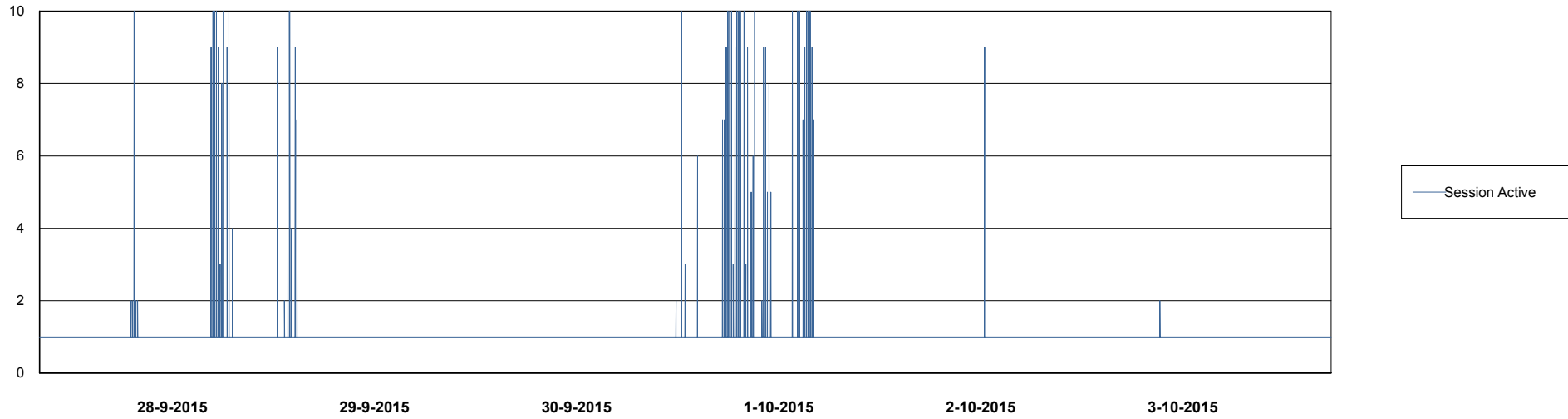
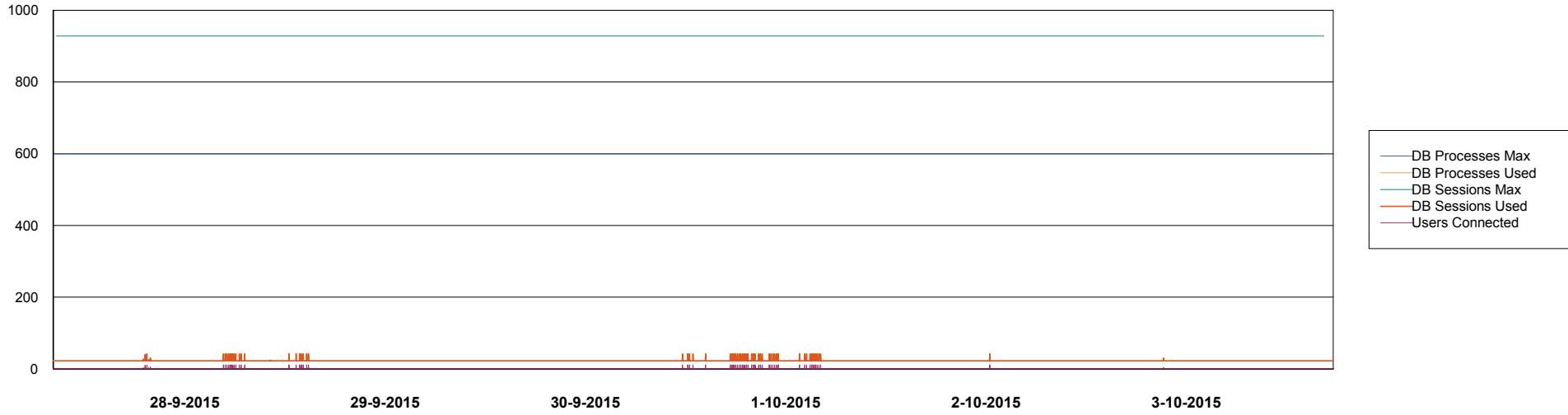


Weekly SLA Customer Report

Customer AUJ_Production
Database ID 41



DATABASE PERFORMANCE AUJDB_Standby

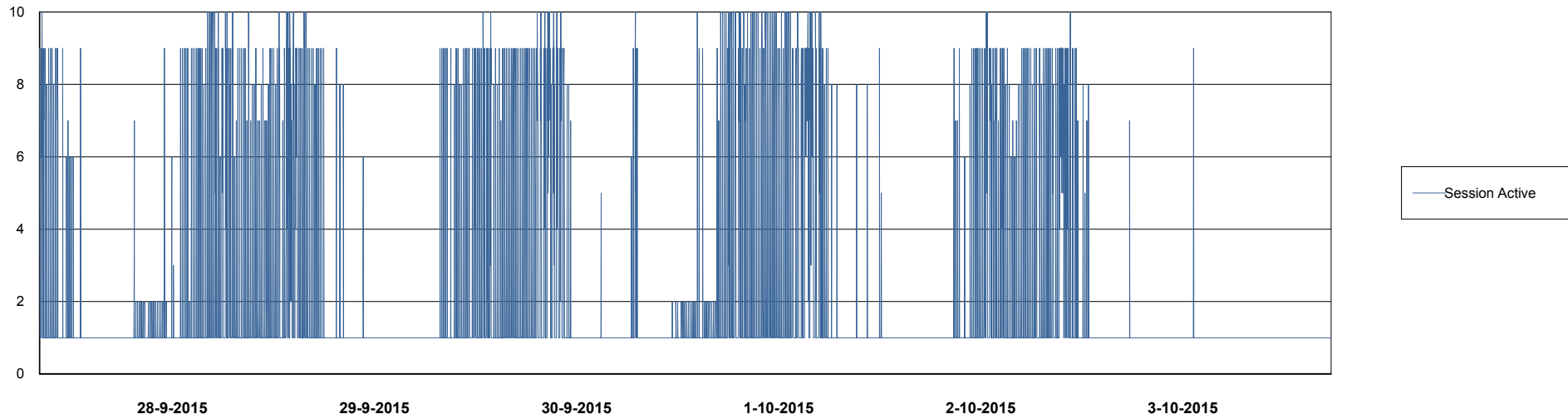
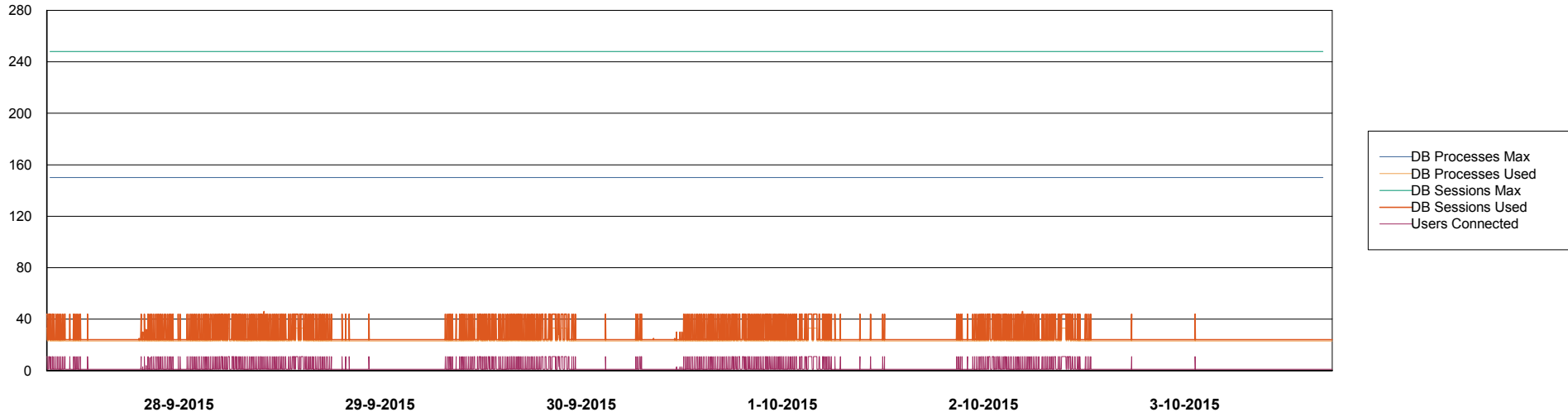


Weekly SLA Customer Report

Customer AUJ_Production
Database ID 41



DATABASE PERFORMANCE AUJDB3_Standby



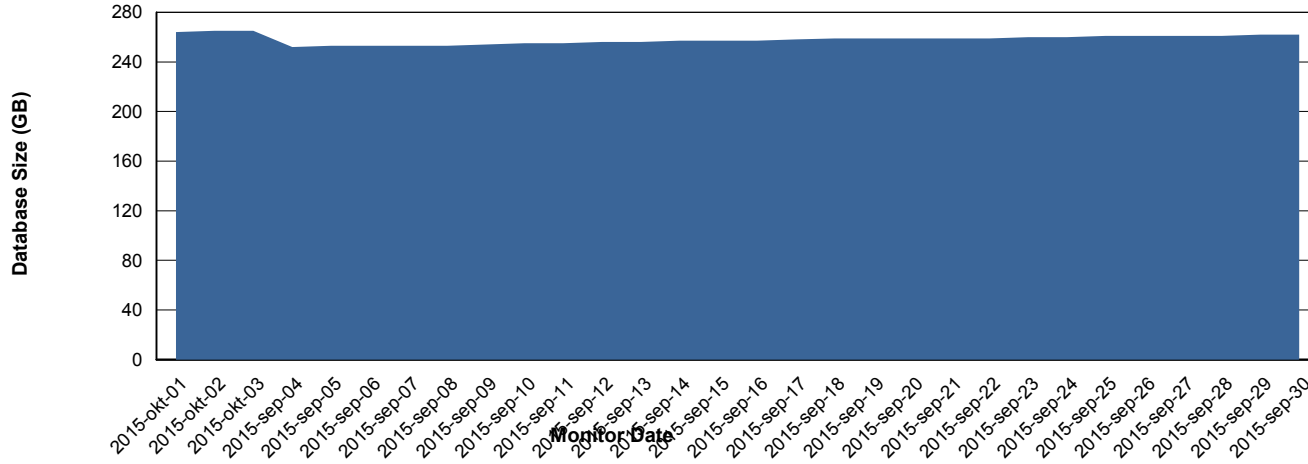
Weekly SLA Customer Report

Customer AUJ_Production
Database ID 41



=====
DATABASE SIZE AUJDB_Production
=====

Database growth over last month



Weekly SLA Customer Report

Customer AUJ_Production
 Database ID 41



=====
 DATABASE TABLESPACES AUJDB_BI
 =====

TOTAL DATABASE SIZE PER TABLESPACE

Date	Tablespace Name	Filesize (Gb)	Usedsize (Gb)	Percentage free
3-10-2015	ABSDATA	112	53	53
	INDX	192	114	41
2-10-2015	ABSDATA	112	53	53
	INDX	192	114	41
1-10-2015	ABSDATA	112	53	53
	INDX	192	114	41
30-9-2015	ABSDATA	112	53	53
	INDX	192	113	41
29-9-2015	ABSDATA	112	53	53
	INDX	192	113	41
28-9-2015	ABSDATA	112	53	53
	INDX	192	113	41
27-9-2015	ABSDATA	112	53	53
	INDX	192	113	41

Weekly SLA Customer Report

Customer AUJ_Production
 Database ID 41



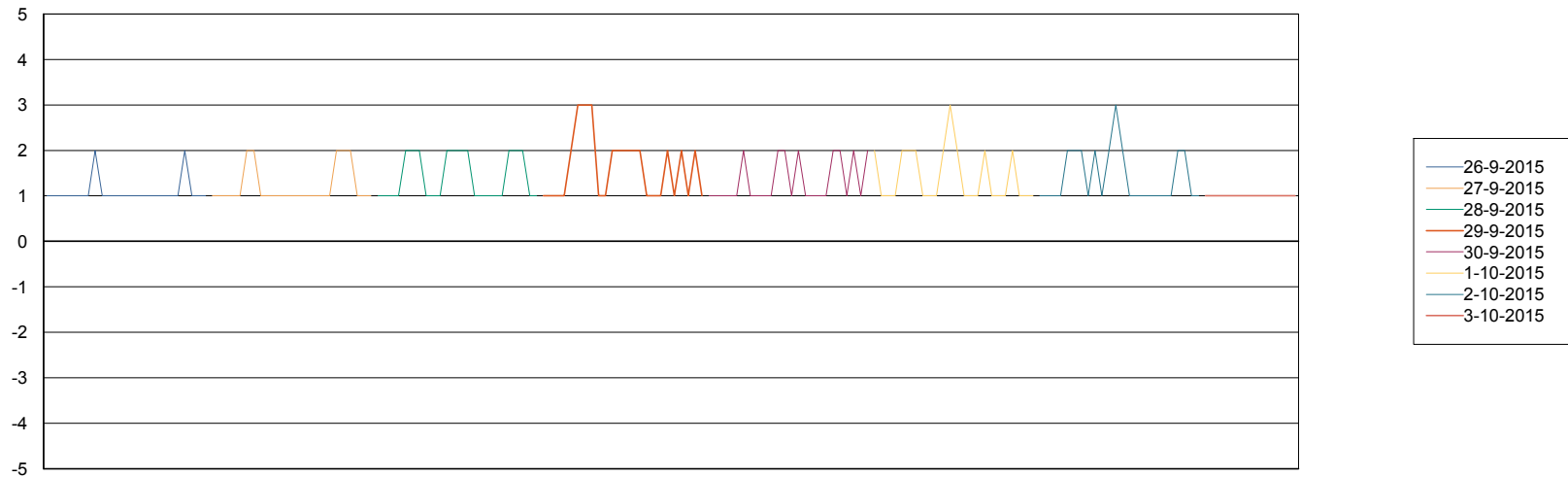
=====
 DATABASE TABLESPACES AUJDB_Production
 =====

TOTAL DATABASE SIZE PER TABLESPACE

Date	Tablespace Name	Filesize (Gb)	Usedsize (Gb)	Percentage free
3-10-2015	ABSDATA	176	130	26
	INDX	256	133	48
2-10-2015	ABSDATA	176	130	26
	INDX	256	133	48
1-10-2015	ABSDATA	176	130	26
	INDX	256	132	48
30-9-2015	ABSDATA	176	130	26
	INDX	256	132	48
29-9-2015	ABSDATA	176	129	27
	INDX	256	131	49
28-9-2015	ABSDATA	176	129	27
	INDX	256	131	49
27-9-2015	ABSDATA	176	129	27
	INDX	256	131	49

=====
 STANDBY DATABASE HEALTH AUJ_Production
 =====

Recovery lag for last 7 days



Weekly SLA Customer Report

Customer AUJ_Production
Database ID 41



=====
ABSSolute Application Server Services
=====