

Weekly SLA Customer Report

Customer PCO Production
 Database ID 44



=====
 HARDDISK USAGE PCO_PRD_ORACLE1
 =====

	Total disk space on C (GB)	Free disk space on C (GB)	Total disk space on D (GB)	Free disk space on D (GB)
26-9-2015	279	217	838	243
25-9-2015	279	217	838	245
24-9-2015	279	217	838	248
23-9-2015	279	217	838	250
22-9-2015	279	217	838	257
21-9-2015	279	217	838	264
20-9-2015	279	217	838	265

=====
 HARDDISK USAGE PCO_PRD_ORACLE2
 =====

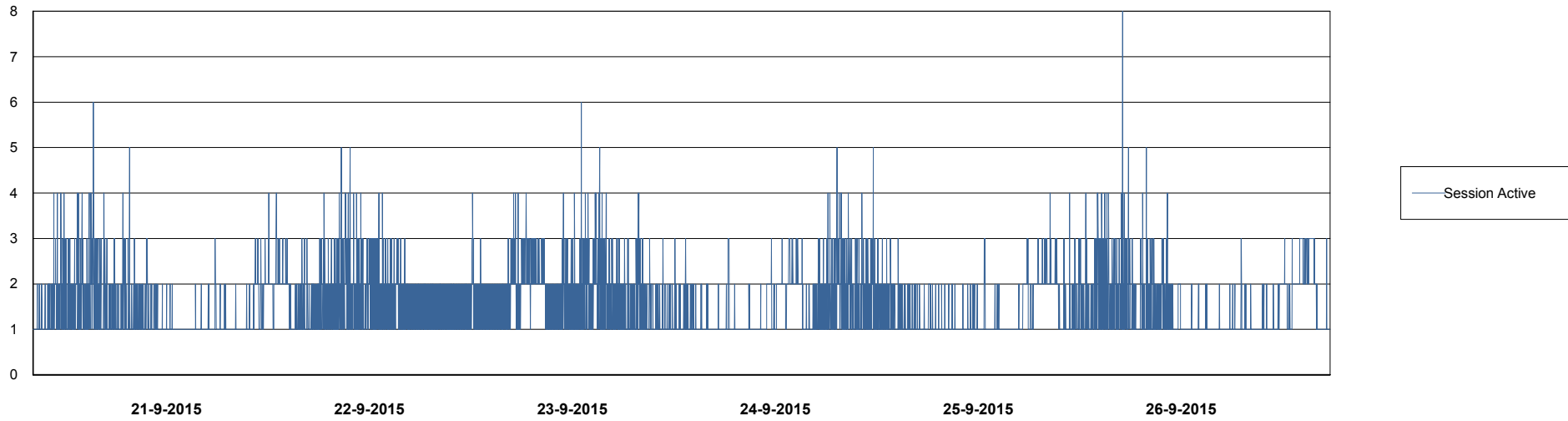
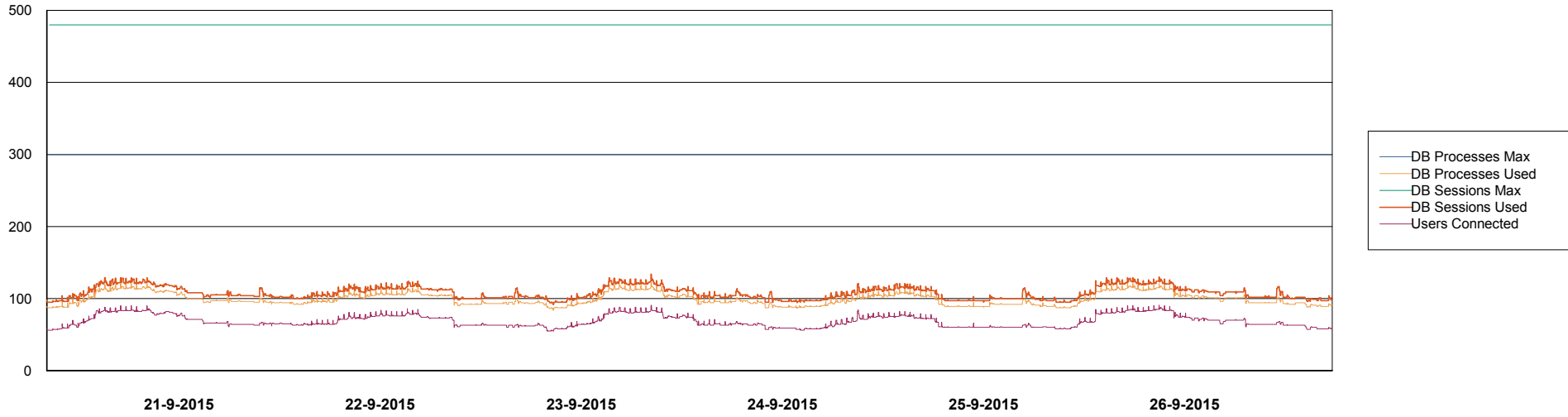
	Total disk space on C (GB)	Free disk space on C (GB)	Total disk space on D (GB)	Free disk space on D (GB)
26-9-2015	279	218	838	448
25-9-2015	279	218	838	450
24-9-2015	279	218	838	453
23-9-2015	279	218	838	456
22-9-2015	279	218	838	462
21-9-2015	279	218	838	469
20-9-2015	279	218	838	470

Weekly SLA Customer Report

Customer PCO Production
Database ID 44



DATABASE PERFORMANCE PCODB_Production

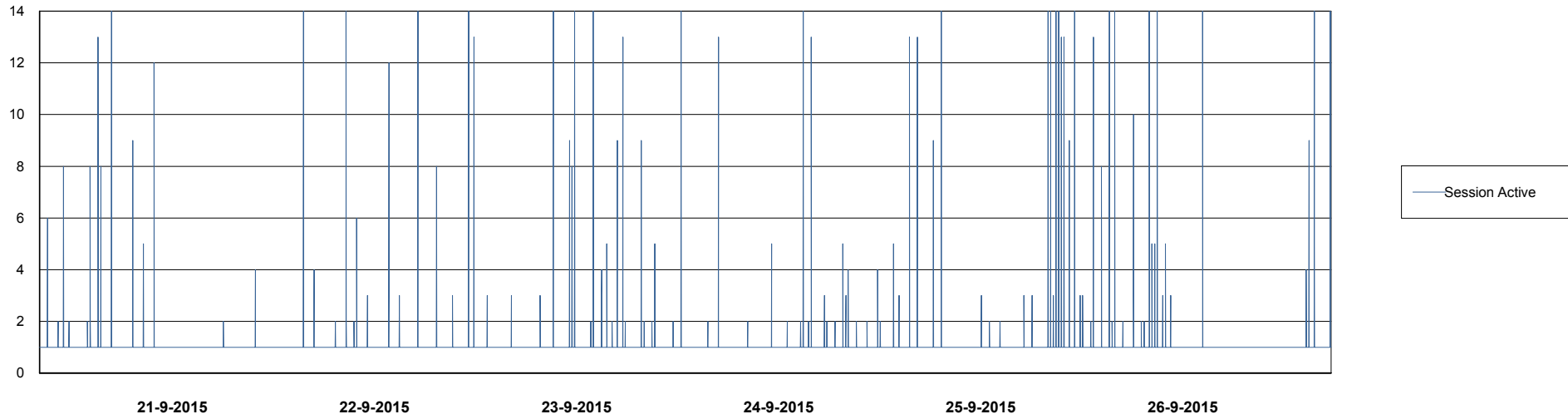
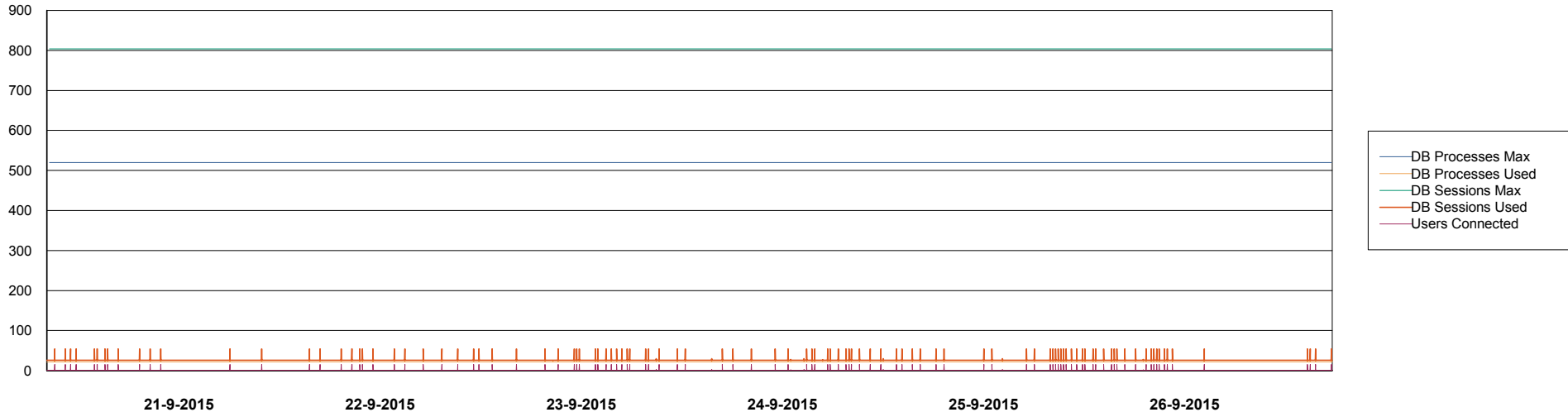


Weekly SLA Customer Report

Customer PCO Production
Database ID 44



DATABASE PERFORMANCE PCODB_Standby



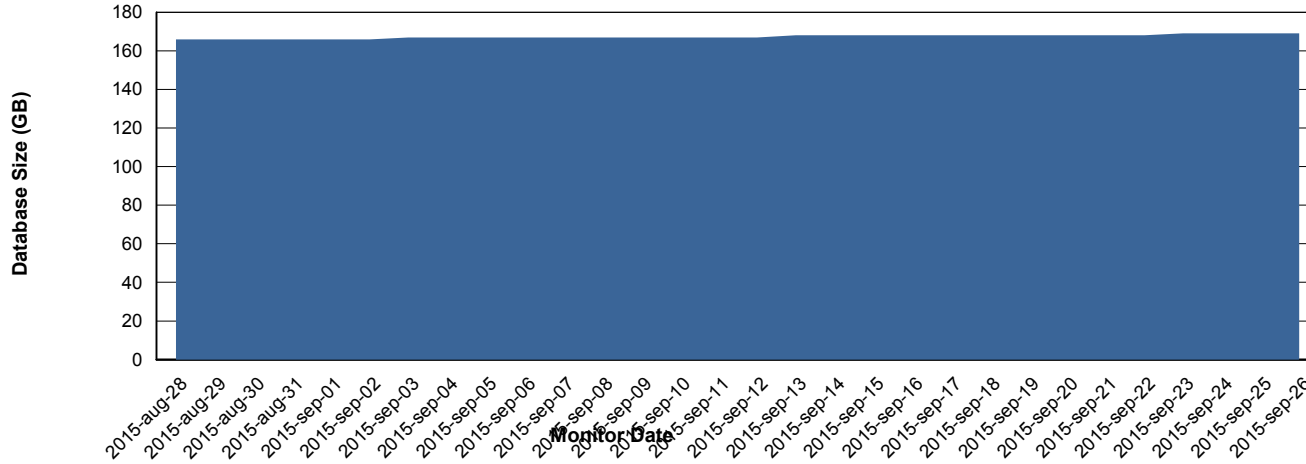
Weekly SLA Customer Report

Customer PCO Production
 Database ID 44



=====
 DATABASE SIZE PCODB_Production
 =====

Database growth over last month



=====
 DATABASE TABLESPACES PCODB_Production
 =====

TOTAL DATABASE SIZE PER TABLESPACE

Date	Tablespace Name	Filesize (Gb)	Usedsize (Gb)	Percentage free
26-9-2015	ABSDATA	81	65	20
	INDX	125	102	18
25-9-2015	ABSDATA	81	65	20
	INDX	125	102	18
24-9-2015	ABSDATA	81	65	20
	INDX	125	102	18
23-9-2015	ABSDATA	81	65	20
	INDX	125	102	18
22-9-2015	ABSDATA	81	65	20
	INDX	125	102	18
21-9-2015	ABSDATA	79	65	18
	INDX	118	101	14
20-9-2015	ABSDATA	79	65	18
	INDX	118	101	14

Weekly SLA Customer Report

Customer PCO Production
Database ID 44



=====
STANDBY DATABASE HEALTH PCO Production
=====

Recovery lag for last 7 days

