

Weekly SLA Customer Report

Customer NIX_Production
 Database ID 51



=====
 HARDDISK USAGE NIX_PRD_ABSAPP1
 =====

	Total disk space on C (GB)	Free disk space on C (GB)
26-9-2015	200	177
25-9-2015	200	177
24-9-2015	200	177
23-9-2015	200	177
22-9-2015	200	177
21-9-2015	200	177
20-9-2015	200	177

=====
 HARDDISK USAGE NIX_PRD_ABSAPP2
 =====

	Total disk space on C (GB)	Free disk space on C (GB)
26-9-2015	200	177
25-9-2015	200	177
24-9-2015	200	177
23-9-2015	200	177
22-9-2015	200	177
21-9-2015	200	177
20-9-2015	200	177

Weekly SLA Customer Report

Customer NIX_Production
 Database ID 51



=====
 HARDDISK USAGE NIX_PRD_ABSWEB01
 =====

	Total disk space on C (GB)	Free disk space on C (GB)
26-9-2015	300	281
25-9-2015	300	281
24-9-2015	300	281
23-9-2015	300	281
22-9-2015	300	281
21-9-2015	300	280
20-9-2015	300	280

=====
 HARDDISK USAGE NIX_PRD_ORACLE_B11
 =====

	Total disk space on C (GB)	Free disk space on C (GB)	Total disk space on E (GB)	Free disk space on E (GB)	Total disk space on F (GB)	Free disk space on F (GB)	Total disk space on G (GB)	Free disk space on G (GB)
26-9-2015	279	204	558	387	558	457	279	236
25-9-2015	279	204	558	387	558	458	279	236
24-9-2015	279	204	558	387	558	458	279	236
23-9-2015	279	204	558	387	558	458	279	236
22-9-2015	279	204	558	386	558	458	279	236
21-9-2015	279	204	558	386	558	458	279	236
20-9-2015	279	204	558	386	558	458	279	236

Weekly SLA Customer Report

Customer NIX_Production
 Database ID 51



=====

HARDDISK USAGE NIX_PRD_ORCDB1

=====

	Total disk space on C (GB)	Free disk space on C (GB)	Total disk space on E (GB)	Free disk space on E (GB)	Total disk space on F (GB)	Free disk space on F (GB)	Total disk space on G (GB)	Free disk space on G (GB)
26-9-2015	279	124	558	493	558	457	279	48
25-9-2015	279	124	558	493	558	457	279	49
24-9-2015	279	124	558	491	558	455	279	51
23-9-2015	279	124	558	493	558	457	279	53
22-9-2015	279	124	558	492	558	456	279	58
21-9-2015	279	124	558	494	558	457	279	62
20-9-2015	279	124	558	494	558	457	279	64

=====

HARDDISK USAGE NIX_PRD_ORCDB2

=====

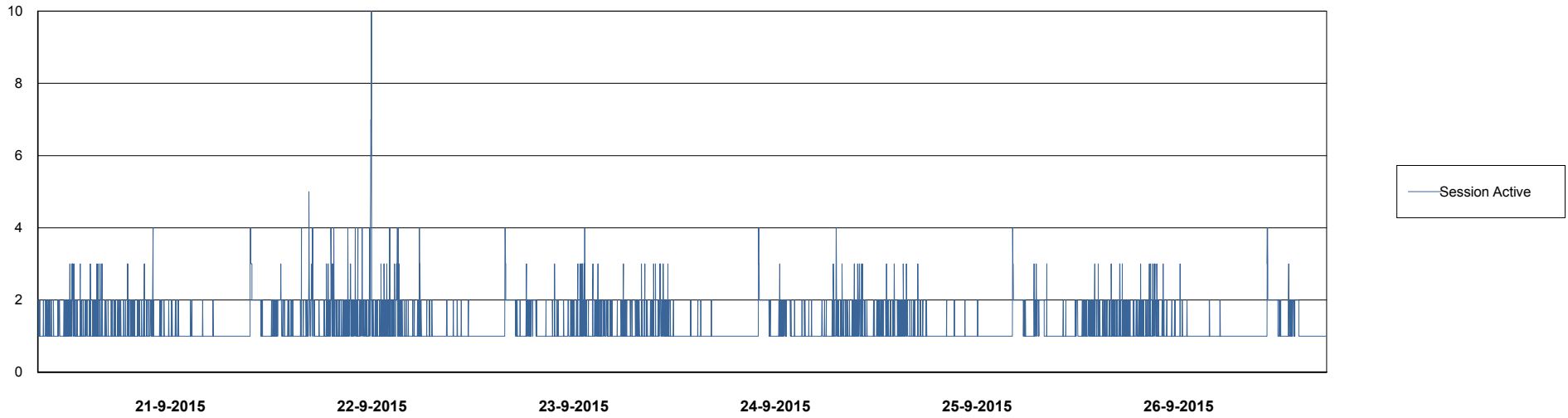
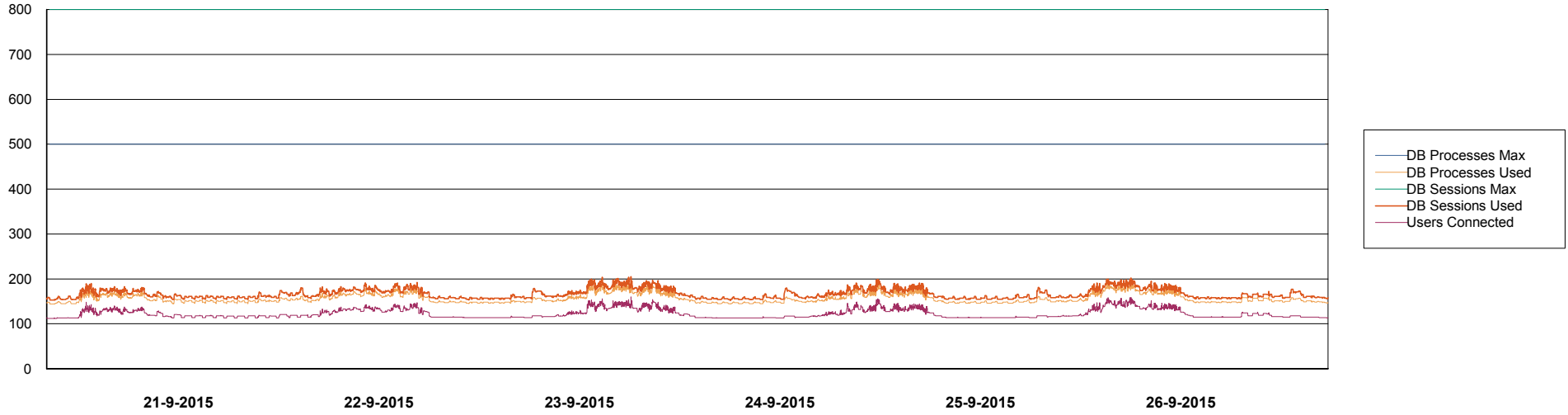
	Total disk space on C (GB)	Free disk space on C (GB)	Total disk space on E (GB)	Free disk space on E (GB)	Total disk space on F (GB)	Free disk space on F (GB)	Total disk space on G (GB)	Free disk space on G (GB)
26-9-2015	279	237	558	403	558	457	279	82
25-9-2015	279	237	558	403	558	457	279	84
24-9-2015	279	237	558	403	558	457	279	86
23-9-2015	279	237	558	403	558	457	279	88
22-9-2015	279	237	558	403	558	457	279	93
21-9-2015	279	237	558	403	558	457	279	97
20-9-2015	279	237	558	403	558	457	279	99

Weekly SLA Customer Report

Customer NIX_Production
Database ID 51



DATABASE PERFORMANCE NIXDB_Production



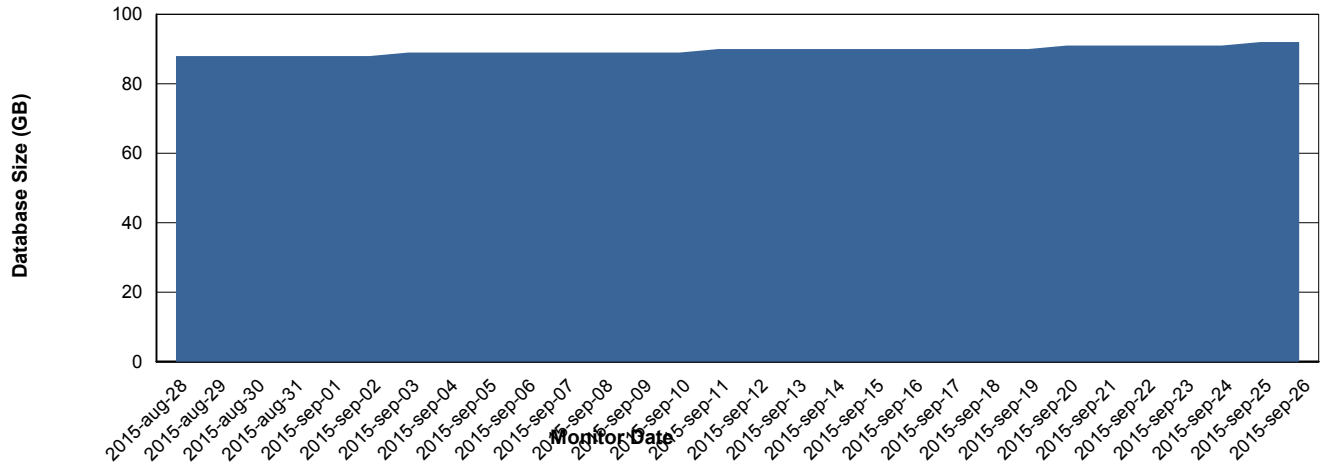
Weekly SLA Customer Report

Customer NIX_Production
 Database ID 51



=====
 DATABASE SIZE NIXDB_Production
 =====

Database growth over last month



=====
 DATABASE TABLESPACES NIXDB_Production
 =====

TOTAL DATABASE SIZE PER TABLESPACE

Date	Tablespace Name	Filesize (Gb)	Usedsize (Gb)	Percentage free
26-9-2015	ABSDATA	50	35	30
	INDX	100	55	45
25-9-2015	ABSDATA	50	35	30
	INDX	100	55	45
24-9-2015	ABSDATA	50	35	30
	INDX	100	55	45
23-9-2015	ABSDATA	50	35	30
	INDX	100	55	45
22-9-2015	ABSDATA	50	35	30
	INDX	100	55	45
21-9-2015	ABSDATA	50	35	30
	INDX	100	54	46
20-9-2015	ABSDATA	50	35	30
	INDX	100	54	46

Weekly SLA Customer Report

Customer NIX_Production
Database ID 51



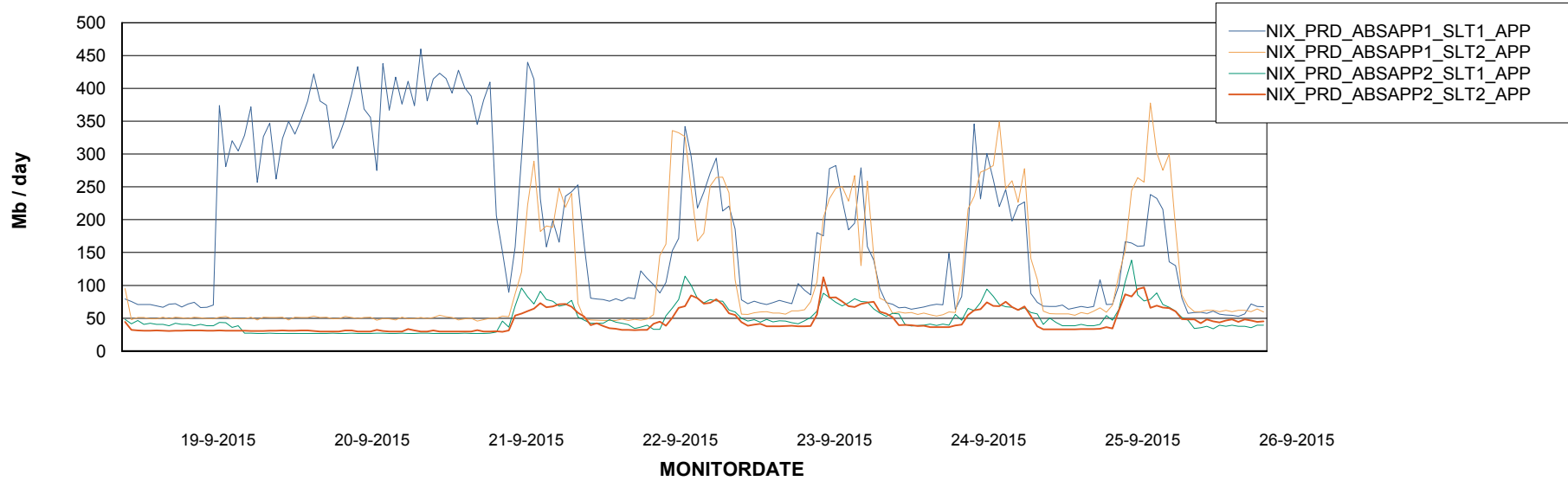
Weekly SLA Customer Report

Customer NIX_Production
Database ID 51



=====
ABSolute Application Server Services
=====

Avg memory used per ABS Server Service



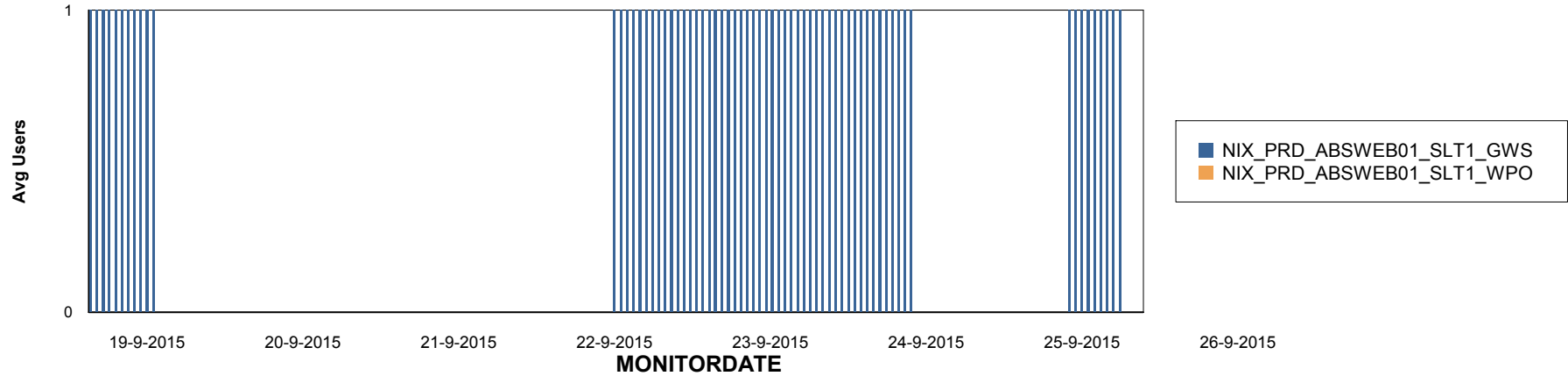
Weekly SLA Customer Report

Customer NIX_Production
Database ID 51

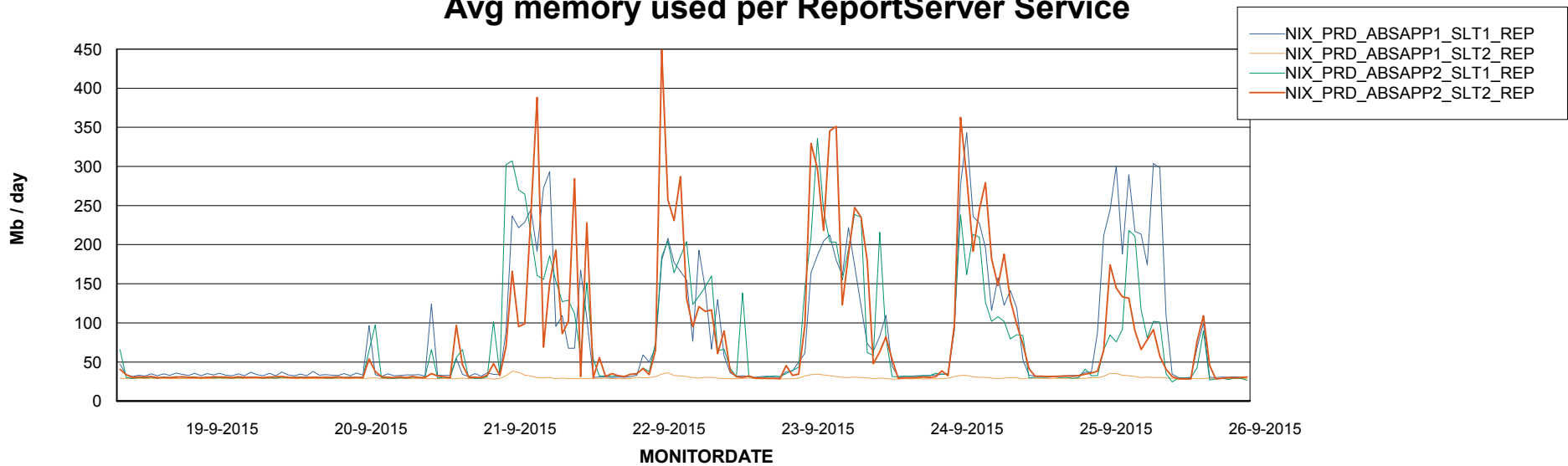


=====
ABSolute Application ReportServer Services
=====

Disaster per ReportServer



Avg memory used per ReportServer Service



Weekly SLA Customer Report

Customer NIX_Production
Database ID 51



Disaster per ABS component

