

## Weekly SLA Customer Report

Customer      JWR Production  
 Database ID    43



=====  
 HARDDISK USAGE    JWR\_PRD\_JWR-ABS-01  
 =====

	Used disk space on / (GB)	Total disk space on / (GB)	Free disk space on / (GB)
26-9-2015	31	49	15
25-9-2015	31	49	15
24-9-2015	31	49	15
23-9-2015	30	49	16
22-9-2015	29	49	17
21-9-2015	31	49	15
20-9-2015	31	49	15

=====  
 HARDDISK USAGE    JWR\_PRD\_JWR-ABS-02  
 =====

	Used disk space on / (GB)	Total disk space on / (GB)	Free disk space on / (GB)
26-9-2015	34	49	13
25-9-2015	34	49	13
24-9-2015	34	49	13
23-9-2015	34	49	13
22-9-2015	34	49	13
21-9-2015	34	49	13
20-9-2015	33	49	13

## Weekly SLA Customer Report

Customer      JWR Production  
 Database ID    43



=====  
 HARDDISK USAGE    JWR\_PRD\_JWR-ODB-01  
 =====

	Used disk space on / (GB)	Total disk space on / (GB)	Free disk space on / (GB)
26-9-2015	97	148	44
25-9-2015	97	148	44
24-9-2015	97	148	44
23-9-2015	97	148	44
22-9-2015	97	148	44
21-9-2015	97	148	43
20-9-2015	97	148	44

=====  
 HARDDISK USAGE    JWR\_PRD\_JWR-ODB-02  
 =====

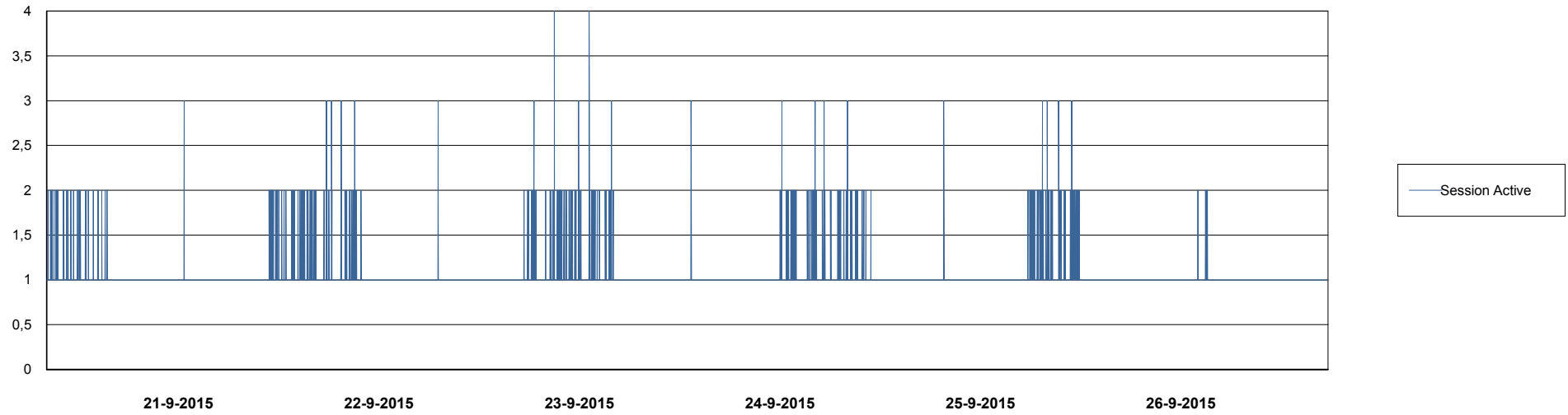
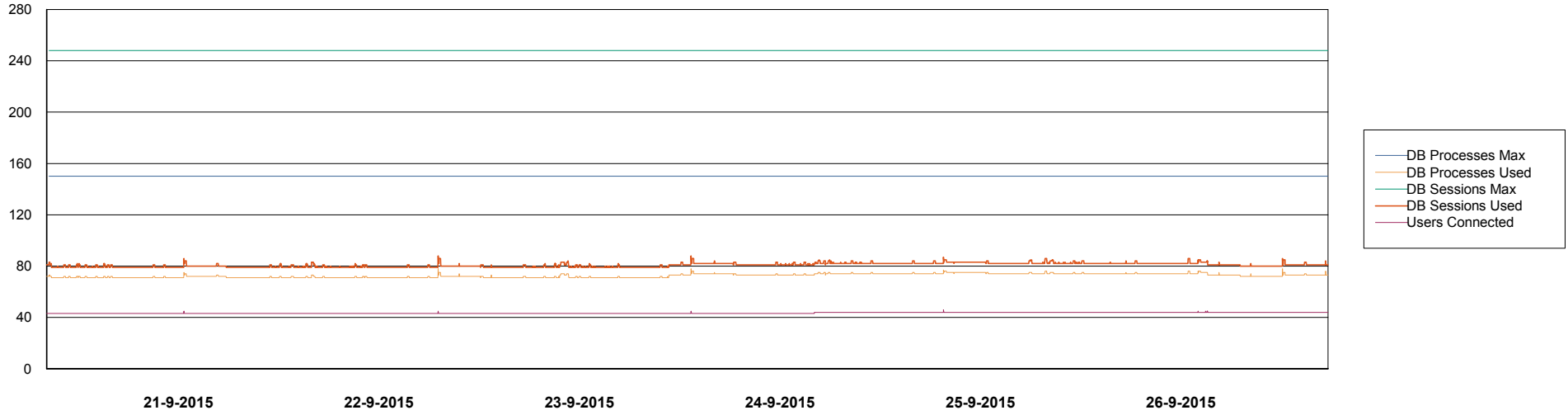
	Used disk space on / (GB)	Total disk space on / (GB)	Free disk space on / (GB)
26-9-2015	94	138	37
25-9-2015	94	138	36
24-9-2015	94	138	36
23-9-2015	94	138	37
22-9-2015	94	138	36
21-9-2015	95	138	36
20-9-2015	94	138	37

# Weekly SLA Customer Report

Customer JWR Production  
Database ID 43



## DATABASE PERFORMANCE JWRDB\_Production



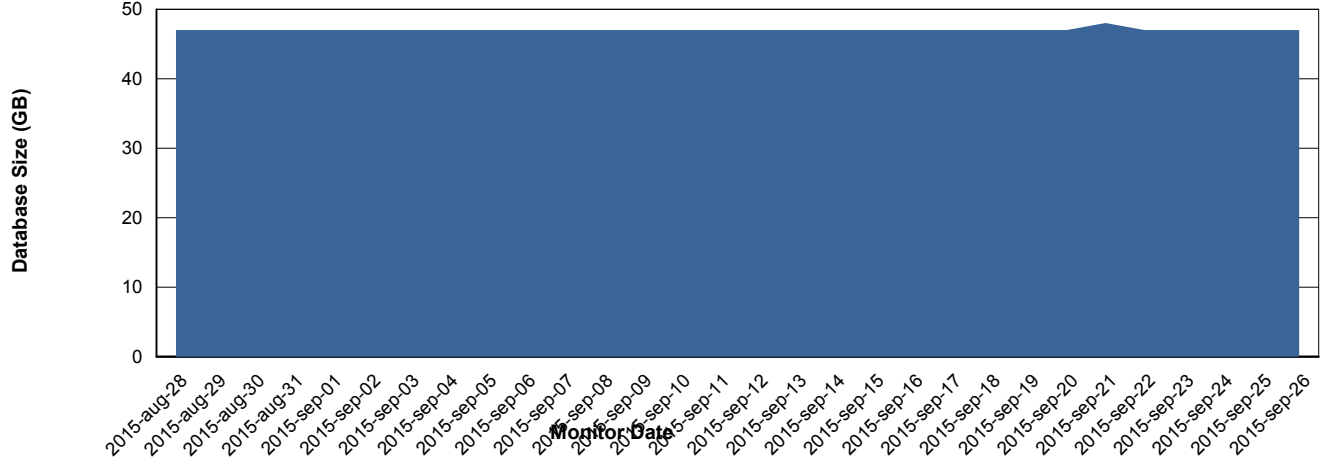
# Weekly SLA Customer Report

Customer JWR Production  
 Database ID 43



=====  
 DATABASE SIZE JWRDB\_Production  
 =====

## Database growth over last month



=====  
 DATABASE TABLESPACES JWRDB\_Production  
 =====

### TOTAL DATABASE SIZE PER TABLESPACE

Date	Tablespace Name	Filesize (Gb)	Usedsize (Gb)	Percentage free
26-9-2015	ABSDATA	18	13	28
	INDX	40	33	18
25-9-2015	ABSDATA	18	13	28
	INDX	40	33	18
24-9-2015	ABSDATA	18	13	28
	INDX	40	33	18
23-9-2015	ABSDATA	18	13	28
	INDX	40	33	18
22-9-2015	ABSDATA	18	13	28
	INDX	40	33	18
21-9-2015	ABSDATA	18	13	28
	INDX	40	33	18
20-9-2015	ABSDATA	18	13	28
	INDX	40	33	18

## Weekly SLA Customer Report

---

Customer     JWR Production  
Database ID   43



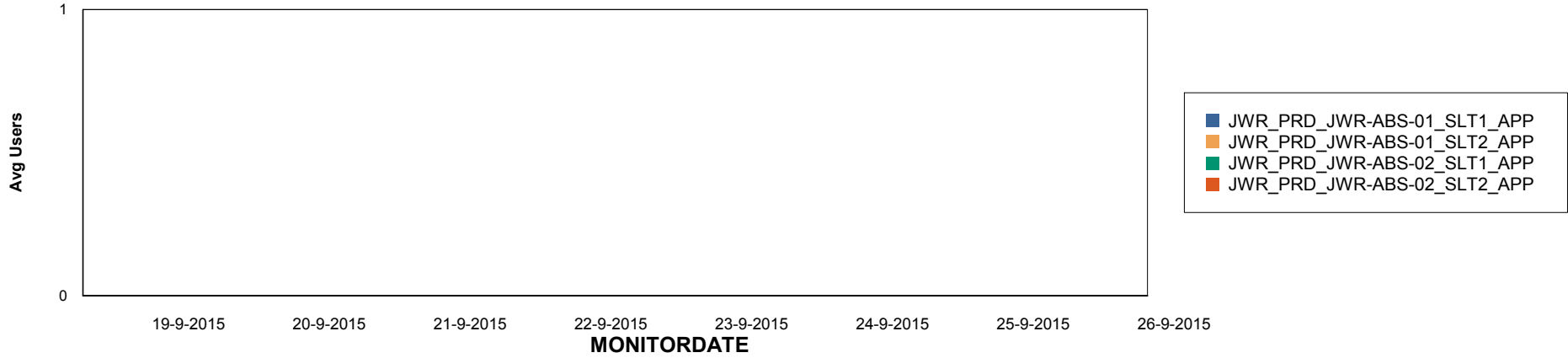
# Weekly SLA Customer Report

Customer JWR Production  
Database ID 43

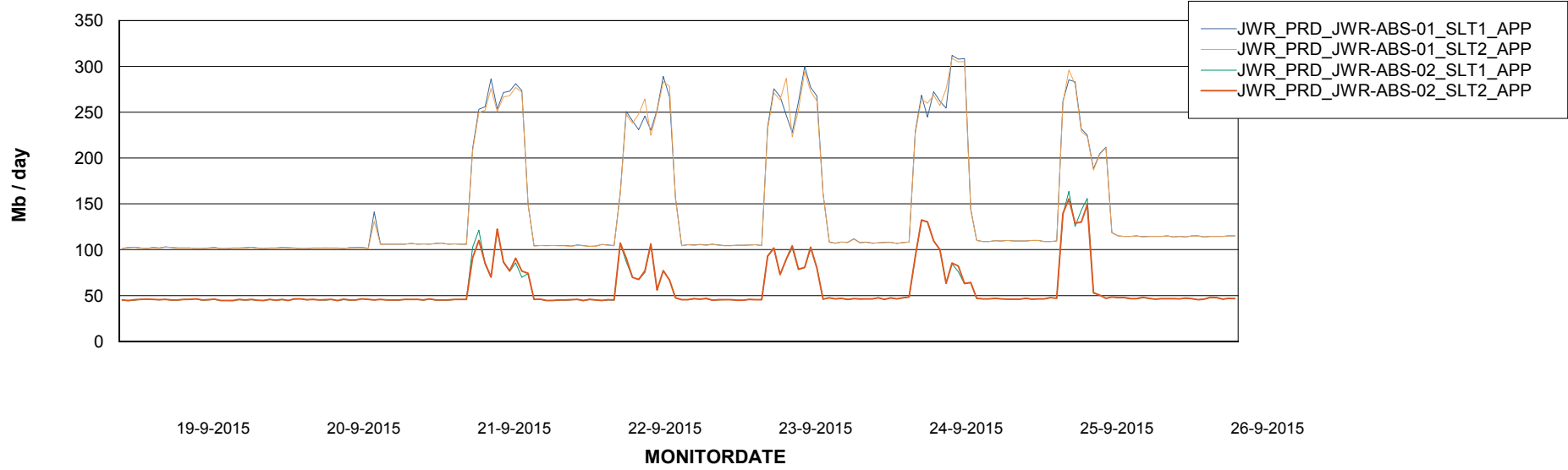


=====  
ABSSolute Application Server Services  
=====

## Disaster per ABS Server



## Avg memory used per ABS Server Service



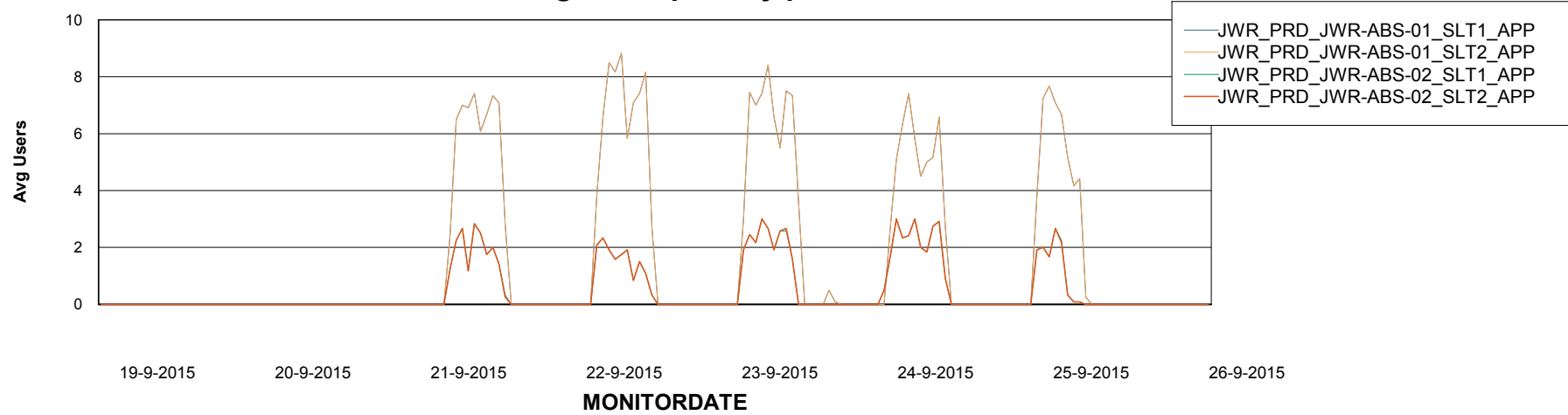
# Weekly SLA Customer Report

Customer JWR Production  
Database ID 43



=====  
ABSolute Application Server Services  
=====

### Avg users per day per ABS server



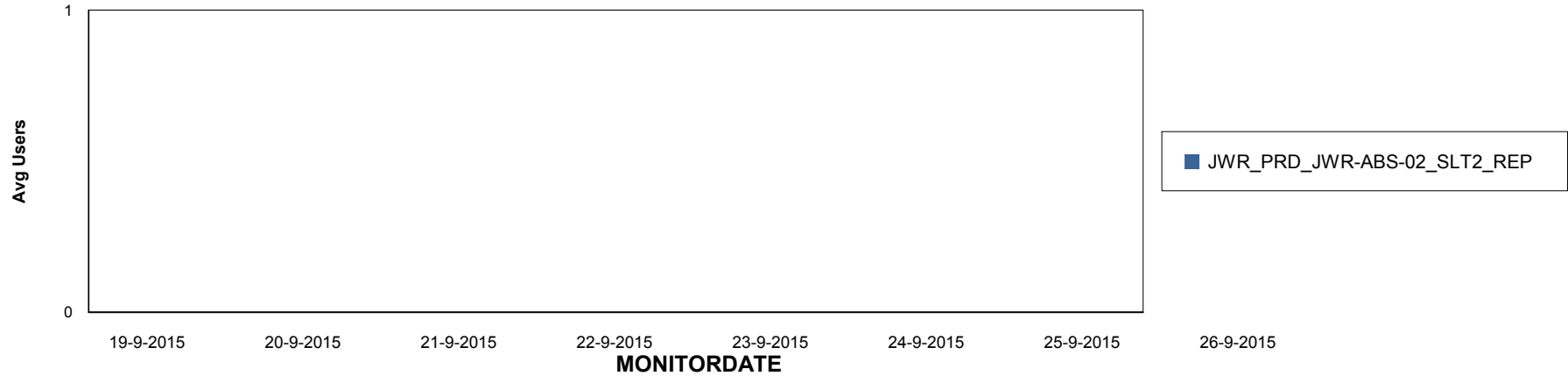
# Weekly SLA Customer Report

Customer JWR Production  
Database ID 43

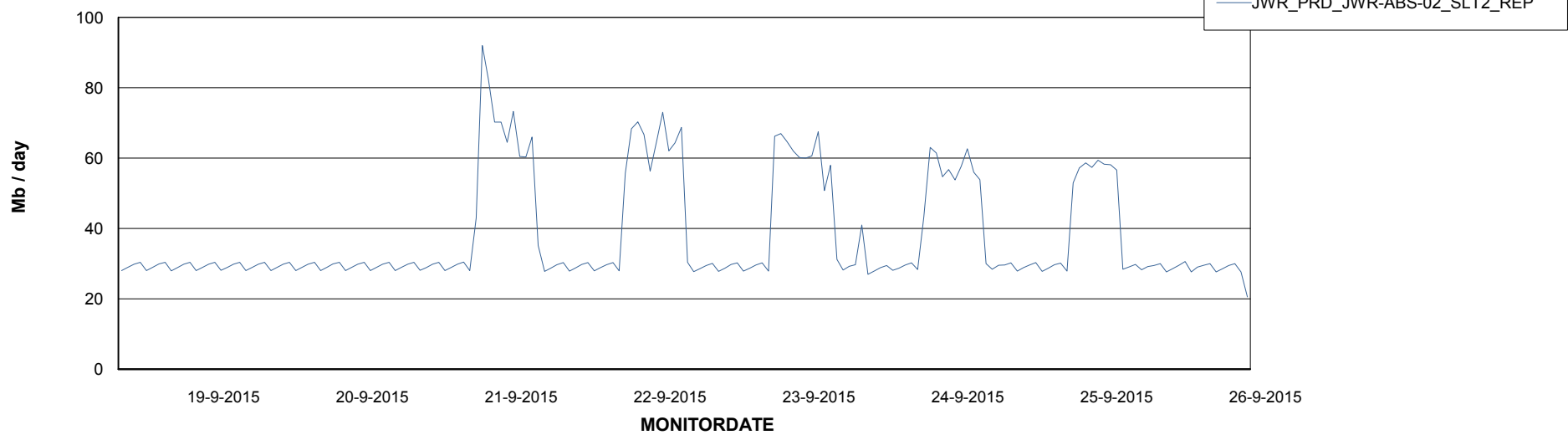


=====  
ABSolute Application ReportServer Services  
=====

## Disaster per ReportServer



## Avg memory used per ReportServer Service



# Weekly SLA Customer Report

Customer JWR Production  
Database ID 43



## Disaster per ABS component

