

Weekly SLA Customer Report

Customer FIS_Production
 Database ID 46



=====
 HARDDISK USAGE FIS_PRD_ORACLE1
 =====

	Total disk space on C (GB)	Free disk space on C (GB)	Total disk space on L (GB)	Free disk space on L (GB)	Total disk space on O (GB)	Free disk space on O (GB)
26-9-2015	279	223	279	192	186	30
25-9-2015	279	223	279	195	186	30
24-9-2015	279	223	279	195	186	30
23-9-2015	279	223	279	195	186	30
22-9-2015	279	223	279	201	186	30
21-9-2015	279	223	279	228	186	30
20-9-2015	279	223	279	229	186	30

=====
 HARDDISK USAGE FIS_PRD_ORACLE2
 =====

	Total disk space on C (GB)	Free disk space on C (GB)	Total disk space on L (GB)	Free disk space on L (GB)	Total disk space on O (GB)	Free disk space on O (GB)
26-9-2015	279	228	279	114	186	30
25-9-2015	279	228	279	113	186	30
24-9-2015	279	228	279	114	186	30
23-9-2015	279	228	279	114	186	30
22-9-2015	279	228	279	114	186	30
21-9-2015	279	228	279	113	186	30
20-9-2015	279	228	279	114	186	30

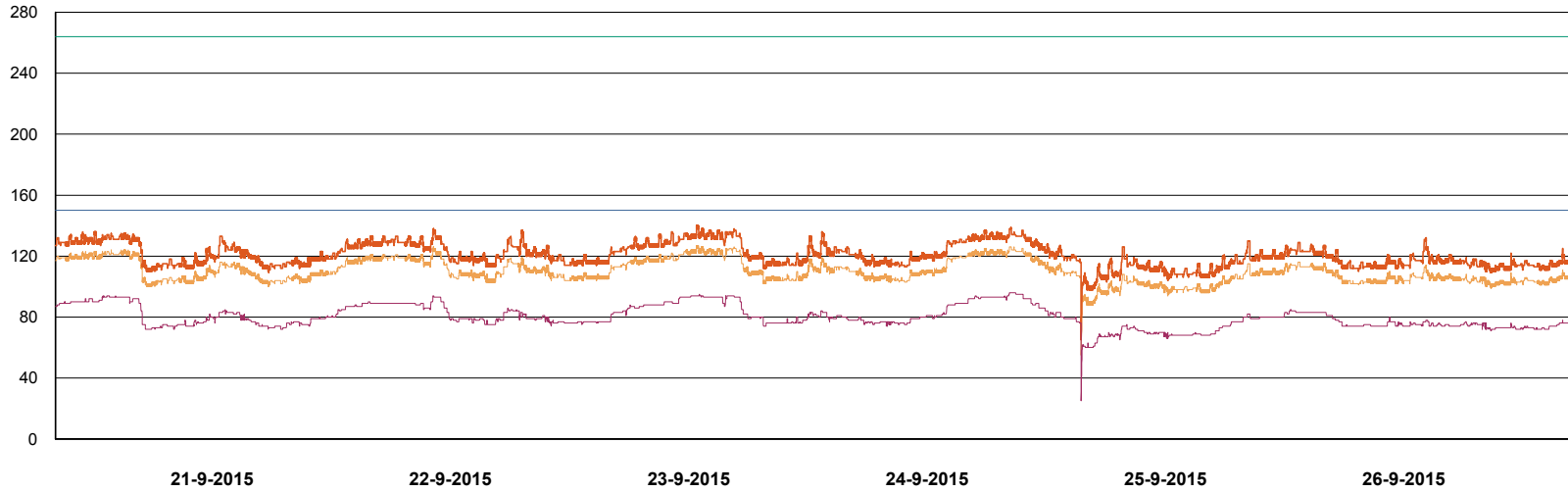
Weekly SLA Customer Report

Customer FIS_Production
Database ID 46

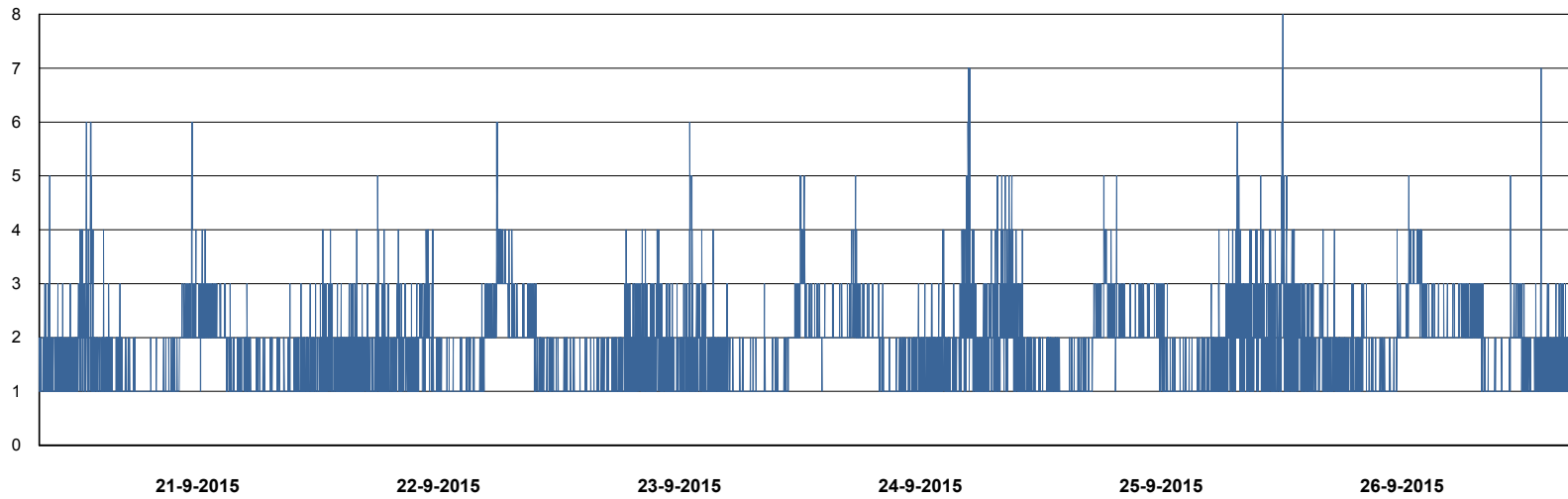


DATABASE PERFORMANCE

FISDB_Production



- DB Processes Max
- DB Processes Used
- DB Sessions Max
- DB Sessions Used
- Users Connected



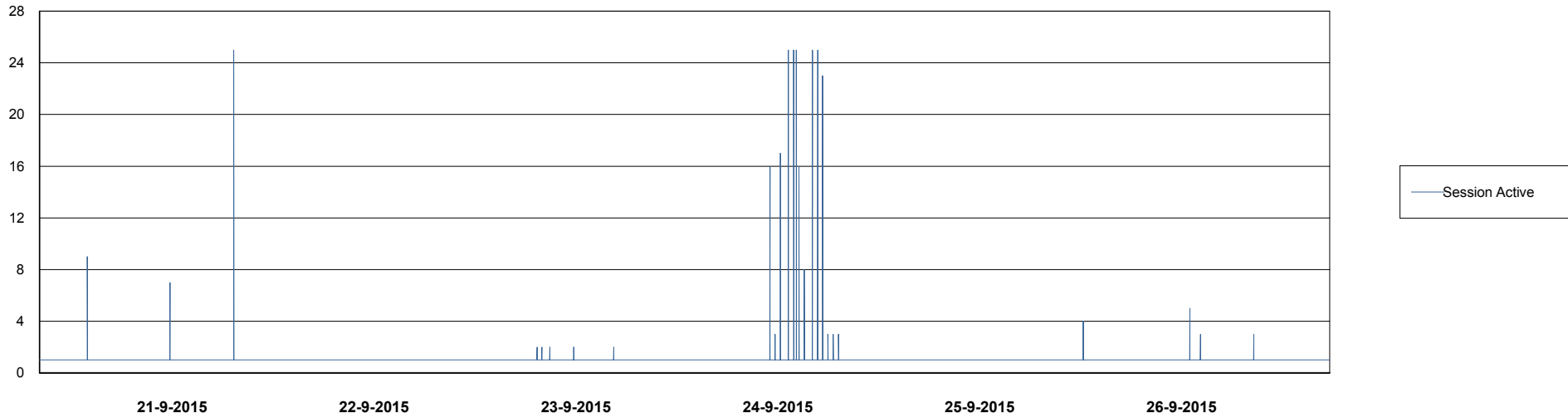
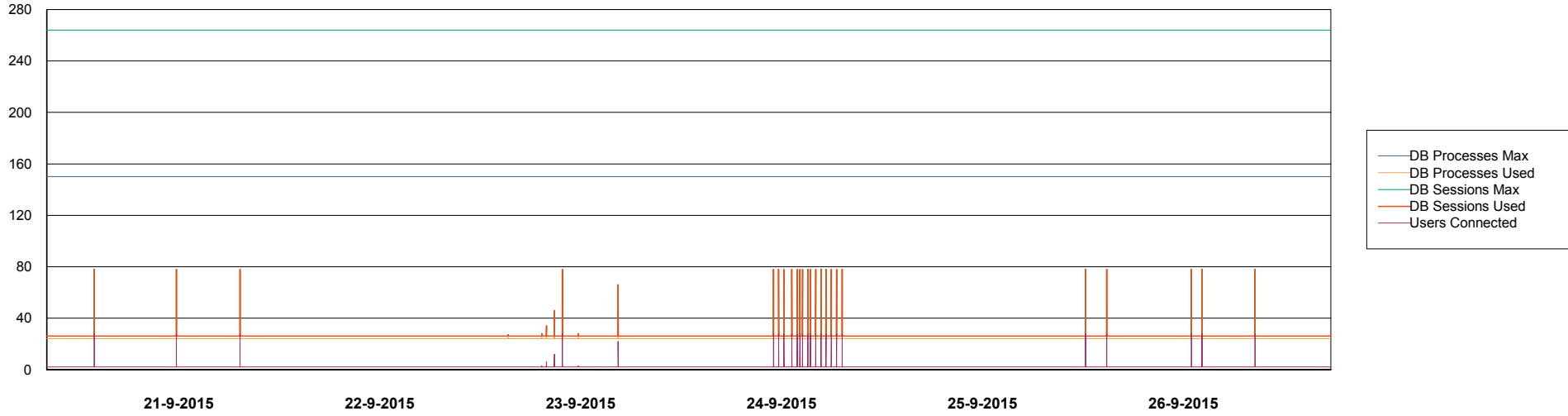
- Session Active

Weekly SLA Customer Report

Customer FIS_Production
Database ID 46



DATABASE PERFORMANCE FISDB_Standby



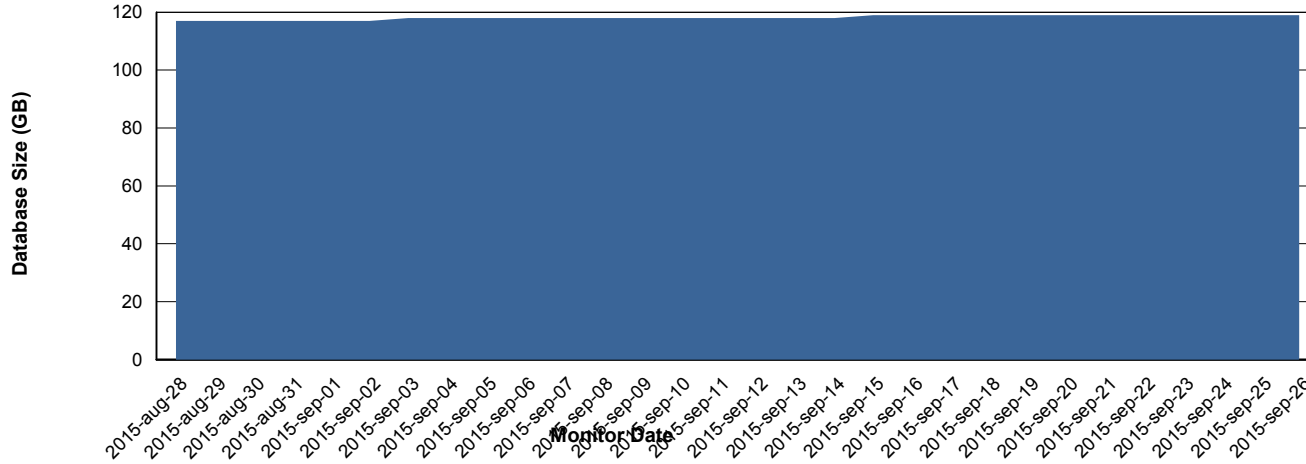
Weekly SLA Customer Report

Customer FIS_Production
 Database ID 46



=====
 DATABASE SIZE FISDB_Production
 =====

Database growth over last month



=====
 DATABASE TABLESPACES FISDB_Production
 =====

TOTAL DATABASE SIZE PER TABLESPACE

Date	Tablespace Name	Filesize (Gb)	Usedsize (Gb)	Percentage free
26-9-2015	ABSDATA	62	53	15
	INDX	79	60	24
25-9-2015	ABSDATA	62	53	15
	INDX	79	60	24
24-9-2015	ABSDATA	62	53	15
	INDX	79	60	24
23-9-2015	ABSDATA	62	53	15
	INDX	79	60	24
22-9-2015	ABSDATA	62	53	15
	INDX	79	60	24
21-9-2015	ABSDATA	62	53	15
	INDX	79	60	24
20-9-2015	ABSDATA	62	53	15
	INDX	79	60	24

