

# Weekly SLA Customer Report

Customer AUJ\_Production  
 Database ID 41



=====  
 HARDDISK USAGE AUJ\_PRD\_ORACLE\_BI1  
 =====

	Used disk space on \$1 (GB)	Total disk space on \$1 (GB)	Free disk space on \$1 (GB)
26-9-2015	421	526	78
25-9-2015	417	526	82
24-9-2015	417	526	81
23-9-2015	417	526	81
22-9-2015	417	526	81
21-9-2015	417	526	82
20-9-2015	420	526	79

=====  
 HARDDISK USAGE AUJ\_PRD\_ORACLE1  
 =====

	Used disk space on \$1 (GB)	Total disk space on \$1 (GB)	Free disk space on \$1 (GB)	Used disk space on /abs2 (GB)	Used disk space on /bk (GB)
26-9-2015	65	290	67	256	705
25-9-2015	66	290	67	256	713
24-9-2015	66	285	67	256	713
23-9-2015	66	290	67	256	713
22-9-2015	66	290	67	256	714
21-9-2015	66	290	67	256	714
20-9-2015	65	290	67	256	714

## Weekly SLA Customer Report

Customer      AUJ\_Production  
 Database ID    41



=====  
 HARDDISK USAGE    AUJ\_PRD\_ORACLE2  
 =====

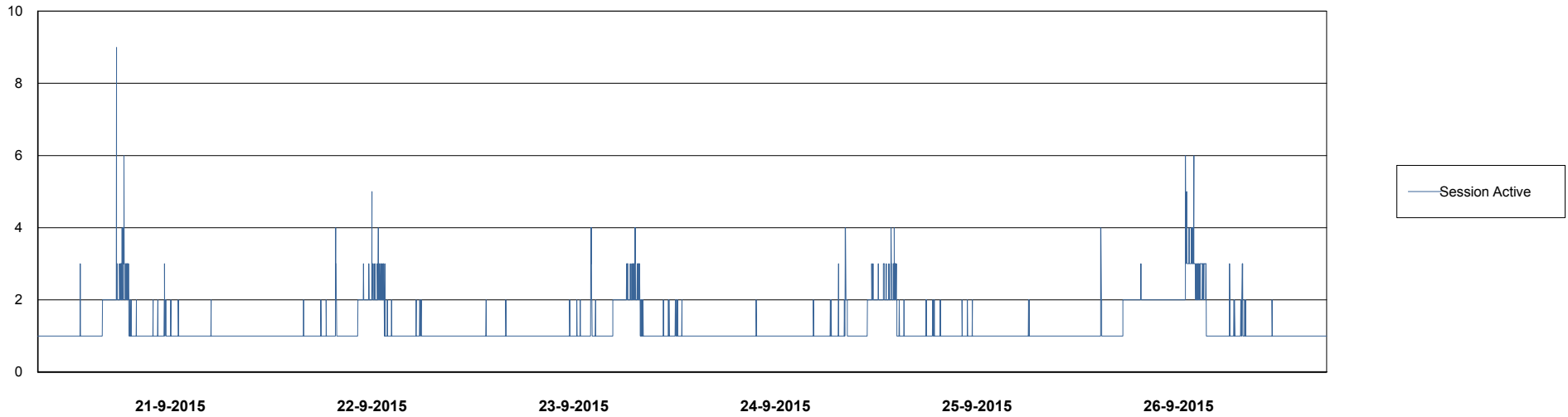
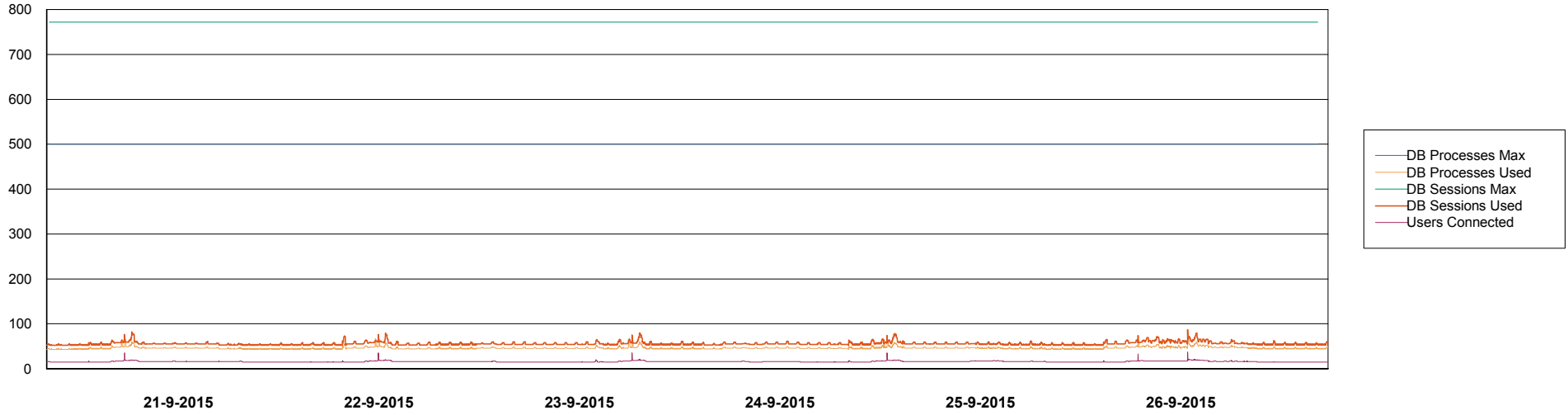
	Used disk space on \$1 (GB)	Total disk space on \$1 (GB)	Free disk space on \$1 (GB)
26-9-2015	70	174	98
25-9-2015	70	174	98
24-9-2015	71	176	98
23-9-2015	71	174	98
22-9-2015	71	174	98
21-9-2015	71	174	98
20-9-2015	70	174	98

# Weekly SLA Customer Report

Customer AUJ\_Production  
Database ID 41



DATABASE PERFORMANCE AUJDB\_BI

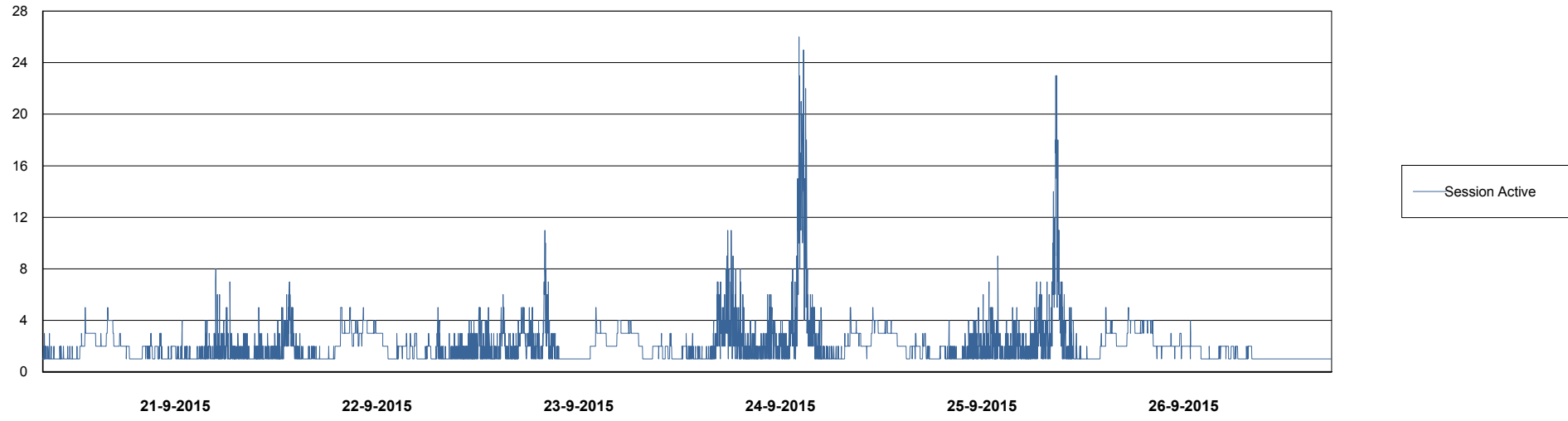
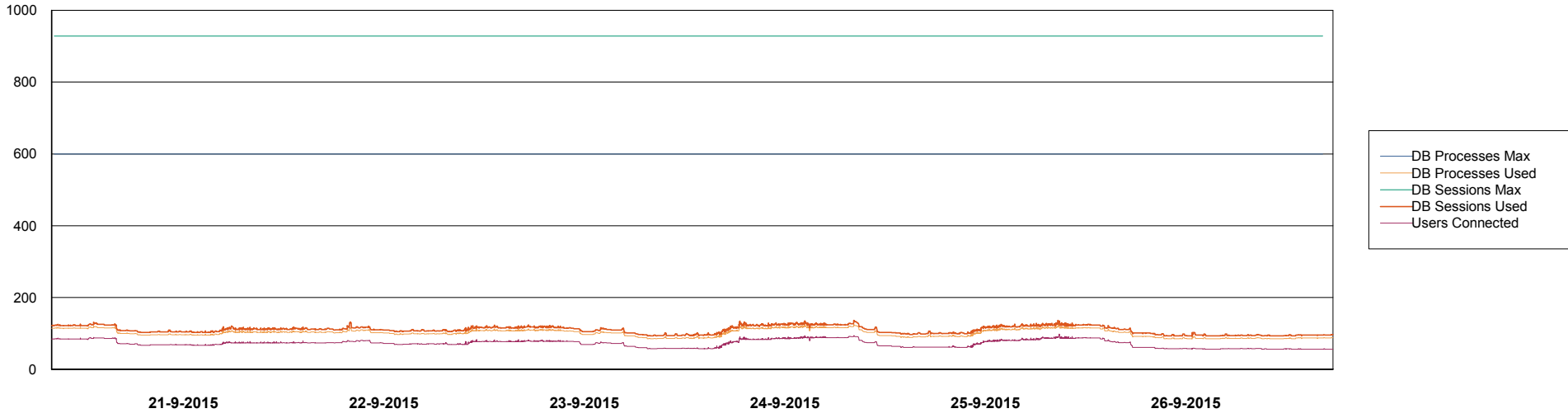


# Weekly SLA Customer Report

Customer AUJ\_Production  
Database ID 41



DATABASE PERFORMANCE AUJDB\_Production



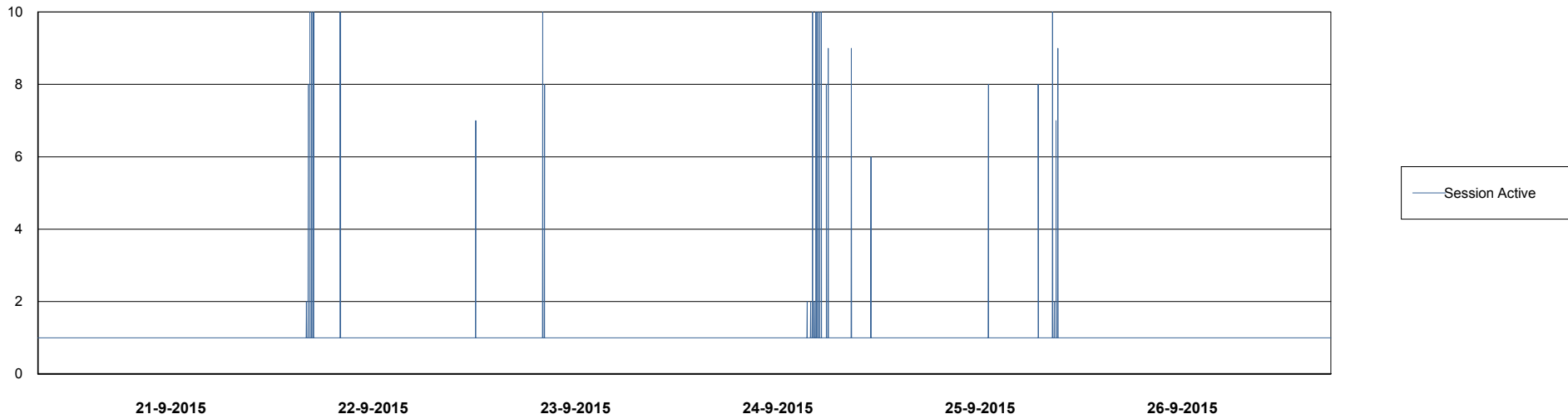
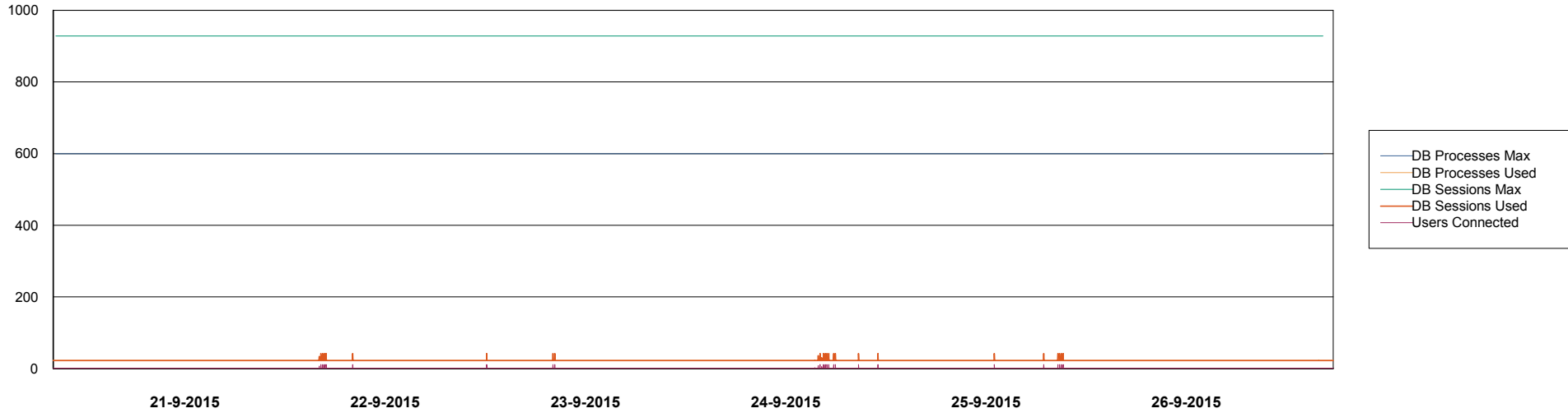
# Weekly SLA Customer Report

Customer AUJ\_Production  
Database ID 41



## DATABASE PERFORMANCE

AUJDB\_Standby



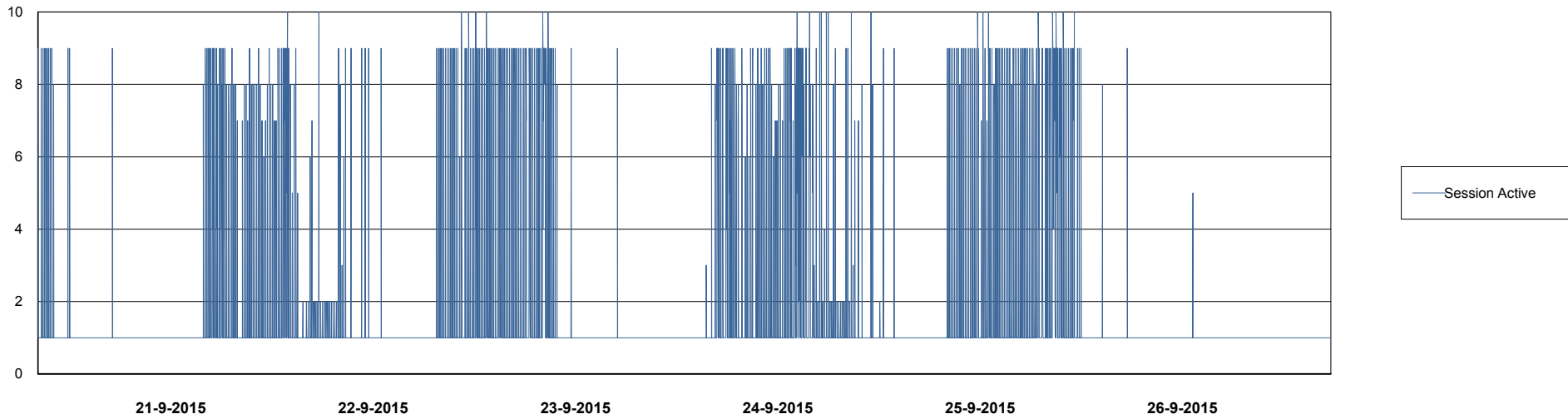
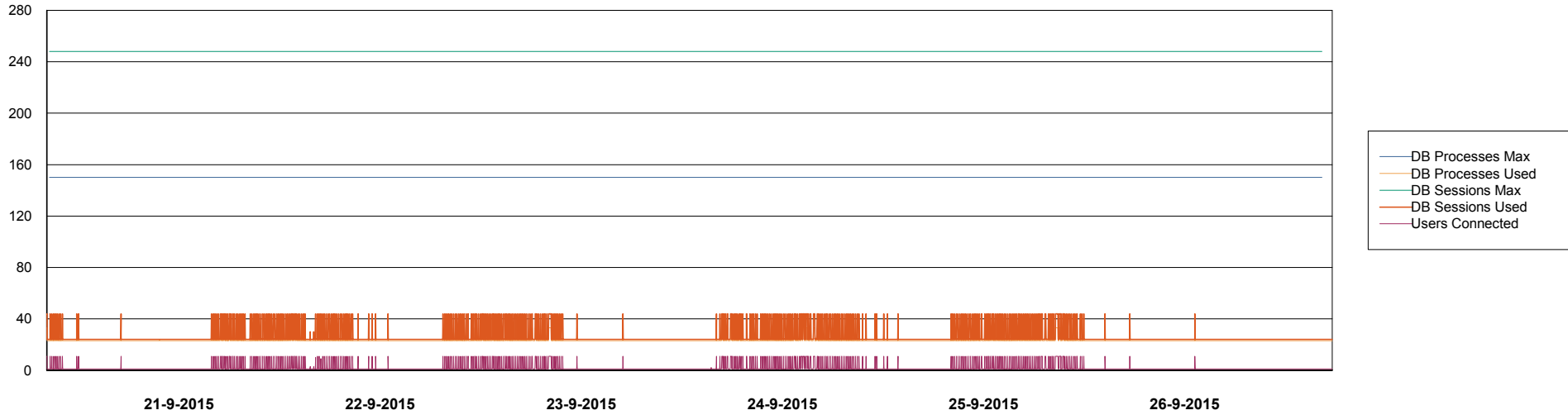
# Weekly SLA Customer Report

Customer AUJ\_Production  
Database ID 41



## DATABASE PERFORMANCE

AUJDB3\_Standby



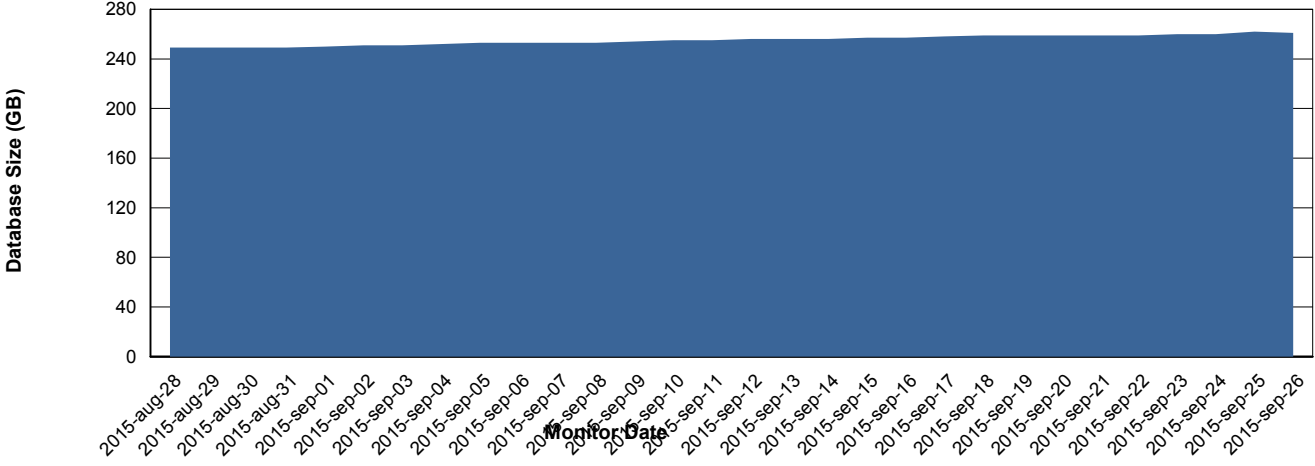
# Weekly SLA Customer Report

Customer AUJ\_Production  
Database ID 41



=====  
DATABASE SIZE AUJDB\_Production  
=====

## Database growth over last month



# Weekly SLA Customer Report

Customer AUJ\_Production  
 Database ID 41



=====  
 DATABASE TABLESPACES AUJDB\_BI  
 =====

TOTAL DATABASE SIZE PER TABLESPACE

Date	Tablespace Name	Filesize (Gb)	Usedsize (Gb)	Percentage free
26-9-2015	ABSDATA	112	53	53
	INDX	192	113	41
25-9-2015	ABSDATA	112	53	53
	INDX	192	113	41
24-9-2015	ABSDATA	112	53	53
	INDX	192	113	41
23-9-2015	ABSDATA	112	53	53
	INDX	192	113	41
22-9-2015	ABSDATA	112	53	53
	INDX	192	113	41
21-9-2015	ABSDATA	112	53	53
	INDX	192	113	41
20-9-2015	ABSDATA	112	52	54
	INDX	192	112	42

# Weekly SLA Customer Report

Customer AUJ\_Production  
 Database ID 41



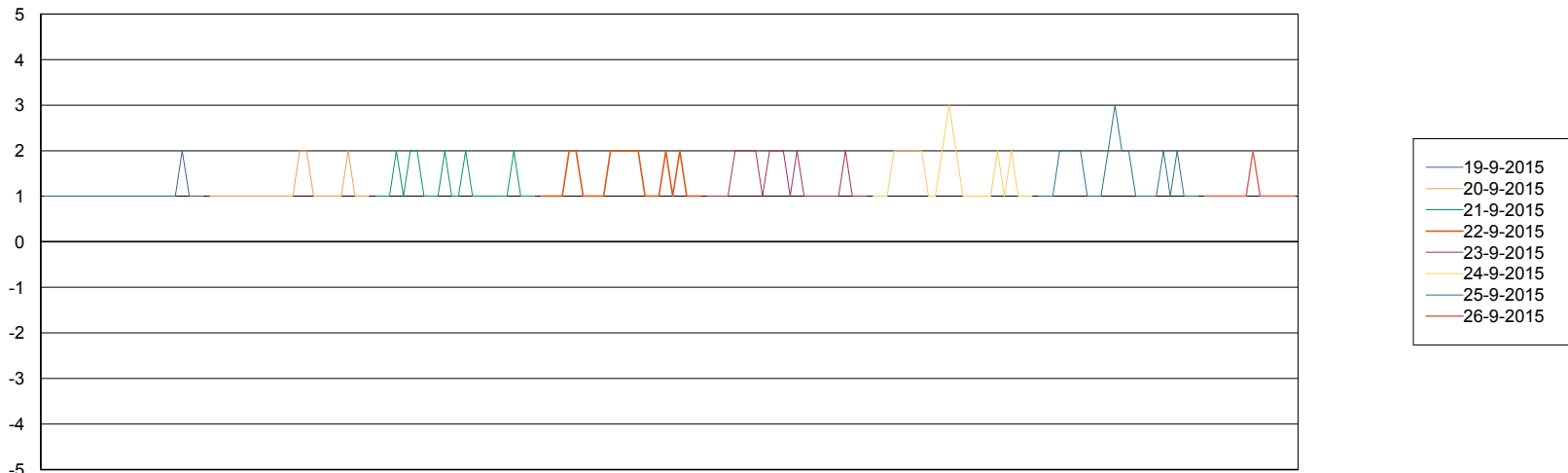
=====  
 DATABASE TABLESPACES AUJDB\_Production  
 =====

TOTAL DATABASE SIZE PER TABLESPACE

Date	Tablespace Name	Filesize (Gb)	Usedsize (Gb)	Percentage free
26-9-2015	ABSDATA	176	129	27
	INDX	256	131	49
25-9-2015	ABSDATA	176	129	27
	INDX	256	131	49
24-9-2015	ABSDATA	176	128	27
	INDX	256	130	49
23-9-2015	ABSDATA	176	128	27
	INDX	256	130	49
22-9-2015	ABSDATA	176	128	27
	INDX	256	130	49
21-9-2015	ABSDATA	176	128	27
	INDX	256	129	50
20-9-2015	ABSDATA	176	128	27
	INDX	256	129	50

=====  
 STANDBY DATABASE HEALTH AUJ\_Production  
 =====

Recovery lag for last 7 days



# Weekly SLA Customer Report

---

Customer AUJ\_Production  
Database ID 41

