

# Weekly SLA Customer Report

Customer NIX\_Production  
Database ID 51



=====  
HARDDISK USAGE NIX\_PRD\_ABSAPP1  
=====

	Total disk space on C (GB)	Free disk space on C (GB)
19-9-2015	200	177
18-9-2015	200	177
17-9-2015	200	178
16-9-2015	200	178
15-9-2015	200	178
14-9-2015	200	178
13-9-2015	200	178

=====  
HARDDISK USAGE NIX\_PRD\_ABSAPP2  
=====

	Total disk space on C (GB)	Free disk space on C (GB)
19-9-2015	200	177
18-9-2015	200	177
17-9-2015	200	177
16-9-2015	200	177
15-9-2015	200	177
14-9-2015	200	177
13-9-2015	200	177

## Weekly SLA Customer Report

Customer      NIX\_Production  
 Database ID    51



=====  
 HARDDISK USAGE    NIX\_PRD\_ABSWEB01  
 =====

	Total disk space on C (GB)	Free disk space on C (GB)
19-9-2015	300	280
18-9-2015	300	280
17-9-2015	300	281
16-9-2015	300	281
15-9-2015	300	281
14-9-2015	300	281
13-9-2015	300	281

=====  
 HARDDISK USAGE    NIX\_PRD\_ORACLE\_B11  
 =====

	Total disk space on C (GB)	Free disk space on C (GB)	Total disk space on E (GB)	Free disk space on E (GB)	Total disk space on F (GB)	Free disk space on F (GB)	Total disk space on G (GB)	Free disk space on G (GB)
19-9-2015	279	204	558	386	558	457	279	236
18-9-2015	279	204	558	386	558	458	279	236
17-9-2015	279	204	558	387	558	458	279	236
16-9-2015	279	204	558	387	558	458	279	236
15-9-2015	279	204	558	388	558	458	279	236
14-9-2015	279	204	558	387	558	458	279	236
13-9-2015	279	204	558	388	558	458	279	236

## Weekly SLA Customer Report

Customer NIX\_Production  
 Database ID 51



=====  
 HARDDISK USAGE NIX\_PRD\_ORCDB1  
 =====

	Total disk space on C (GB)	Free disk space on C (GB)	Total disk space on E (GB)	Free disk space on E (GB)	Total disk space on F (GB)	Free disk space on F (GB)	Total disk space on G (GB)	Free disk space on G (GB)
19-9-2015	279	124	558	494	558	457	279	65
18-9-2015	279	124	558	494	558	457	279	66
17-9-2015	279	124	558	494	558	457	279	68
16-9-2015	279	124	558	494	558	457	279	70
15-9-2015	279	124	558	494	558	457	279	73
14-9-2015	279	124	558	494	558	457	279	76
13-9-2015	279	124	558	494	558	457	279	79

=====  
 HARDDISK USAGE NIX\_PRD\_ORCDB2  
 =====

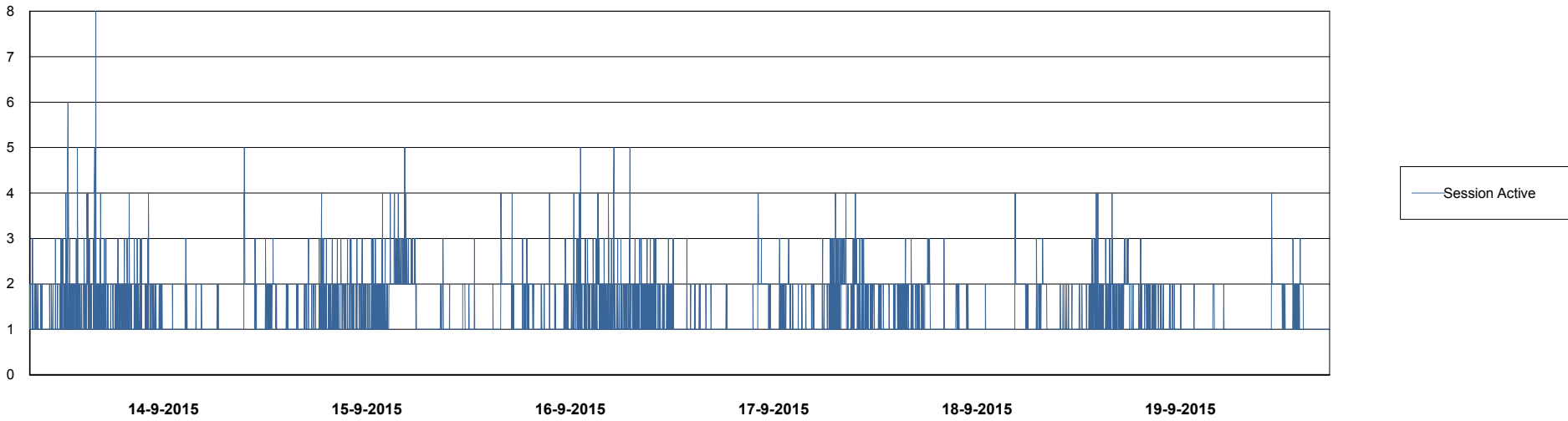
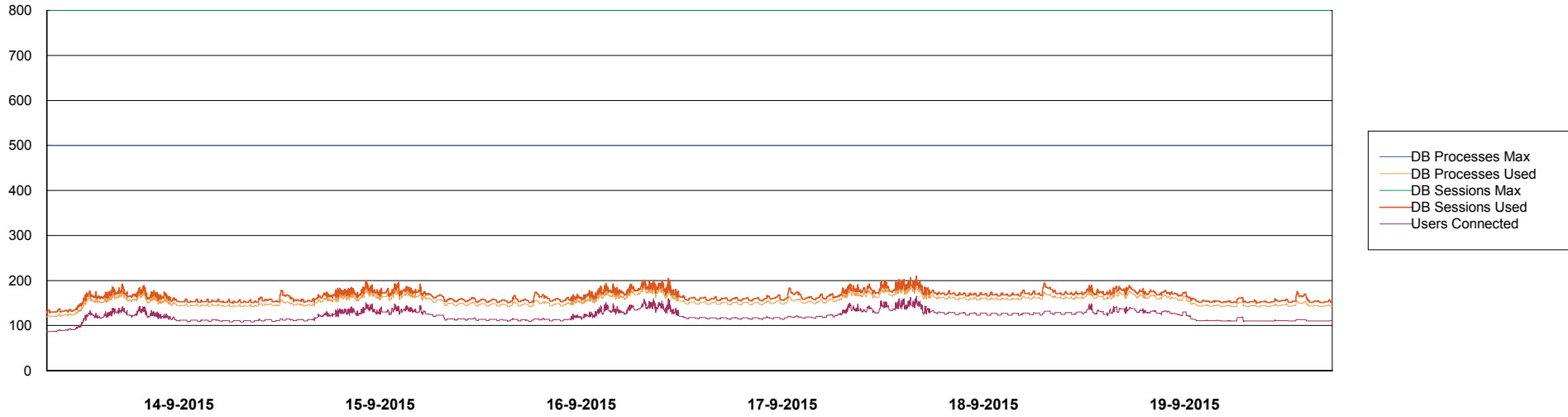
	Total disk space on C (GB)	Free disk space on C (GB)	Total disk space on E (GB)	Free disk space on E (GB)	Total disk space on F (GB)	Free disk space on F (GB)	Total disk space on G (GB)	Free disk space on G (GB)
19-9-2015	279	237	558	403	558	457	279	100
18-9-2015	279	237	558	403	558	457	279	101
17-9-2015	279	237	558	403	558	457	279	103
16-9-2015	279	237	558	403	558	457	279	105
15-9-2015	279	237	558	403	558	457	279	107
14-9-2015	279	237	558	403	558	457	279	111
13-9-2015	279	237	558	403	558	457	279	113

# Weekly SLA Customer Report

Customer NIX\_Production  
Database ID 51



DATABASE PERFORMANCE NIXDB\_Production



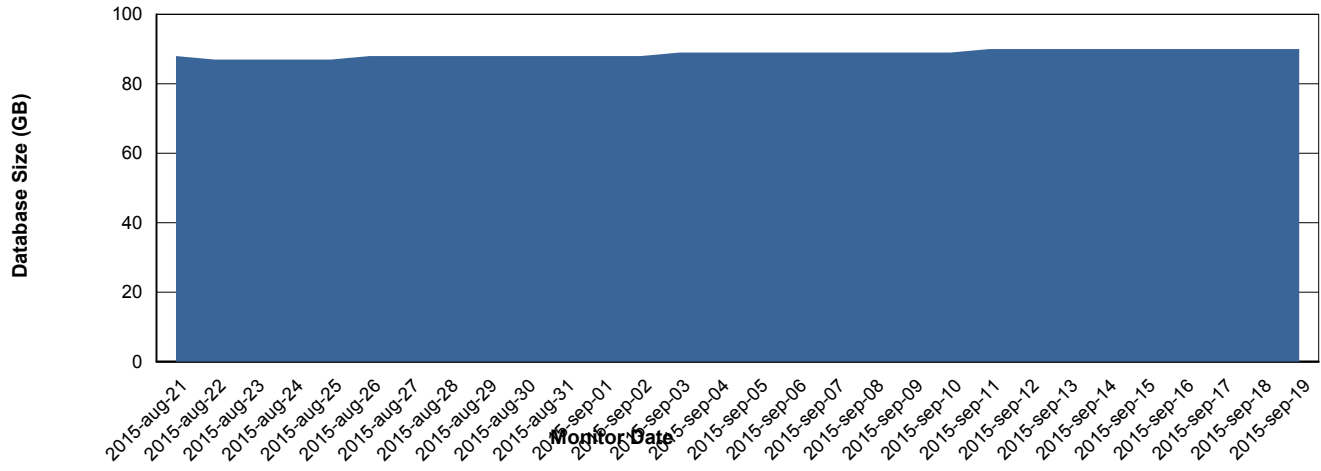
# Weekly SLA Customer Report

Customer NIX\_Production  
 Database ID 51



=====  
 DATABASE SIZE NIXDB\_Production  
 =====

## Database growth over last month



=====  
 DATABASE TABLESPACES NIXDB\_Production  
 =====

### TOTAL DATABASE SIZE PER TABLESPACE

Date	Tablespace Name	Filesize (Gb)	Usedsize (Gb)	Percentage free
19-9-2015	ABSDATA	50	35	30
	INDX	100	54	46
18-9-2015	ABSDATA	50	35	30
	INDX	100	54	46
17-9-2015	ABSDATA	50	35	30
	INDX	100	54	46
16-9-2015	ABSDATA	50	35	30
	INDX	100	54	46
15-9-2015	ABSDATA	50	35	30
	INDX	100	54	46
14-9-2015	ABSDATA	50	35	30
	INDX	100	54	46
13-9-2015	ABSDATA	50	35	30
	INDX	100	54	46

# Weekly SLA Customer Report

---

Customer NIX\_Production  
Database ID 51



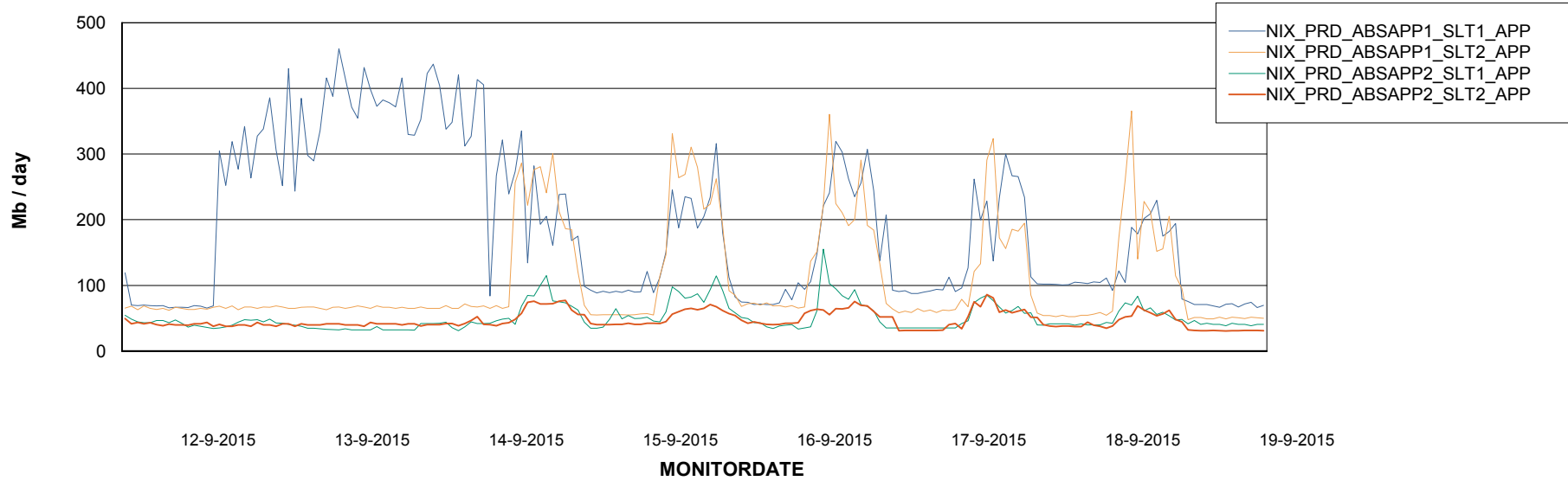
# Weekly SLA Customer Report

Customer NIX\_Production  
Database ID 51



=====  
ABSolute Application Server Services  
=====

### Avg memory used per ABS Server Service



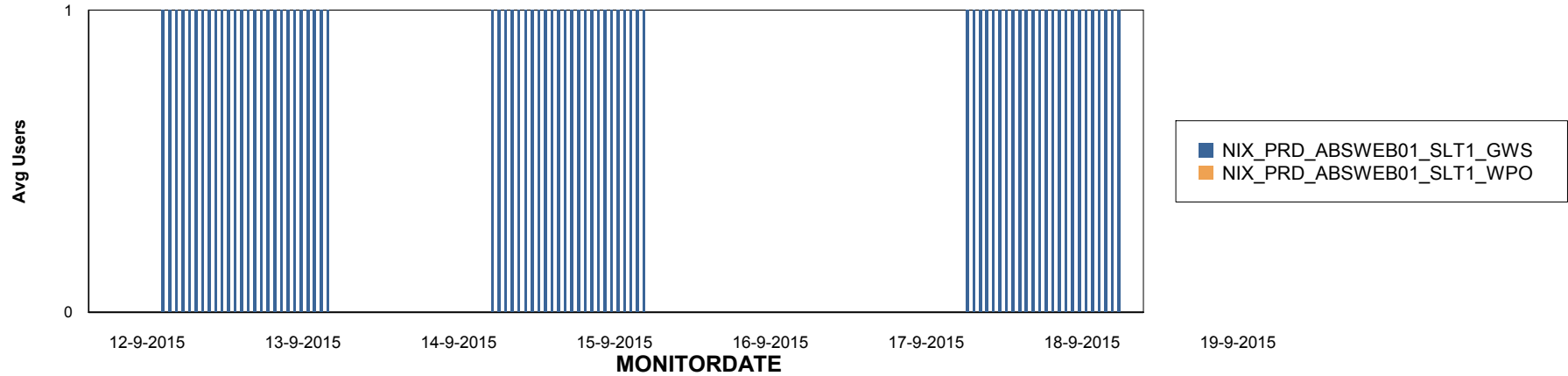
# Weekly SLA Customer Report

Customer NIX\_Production  
Database ID 51

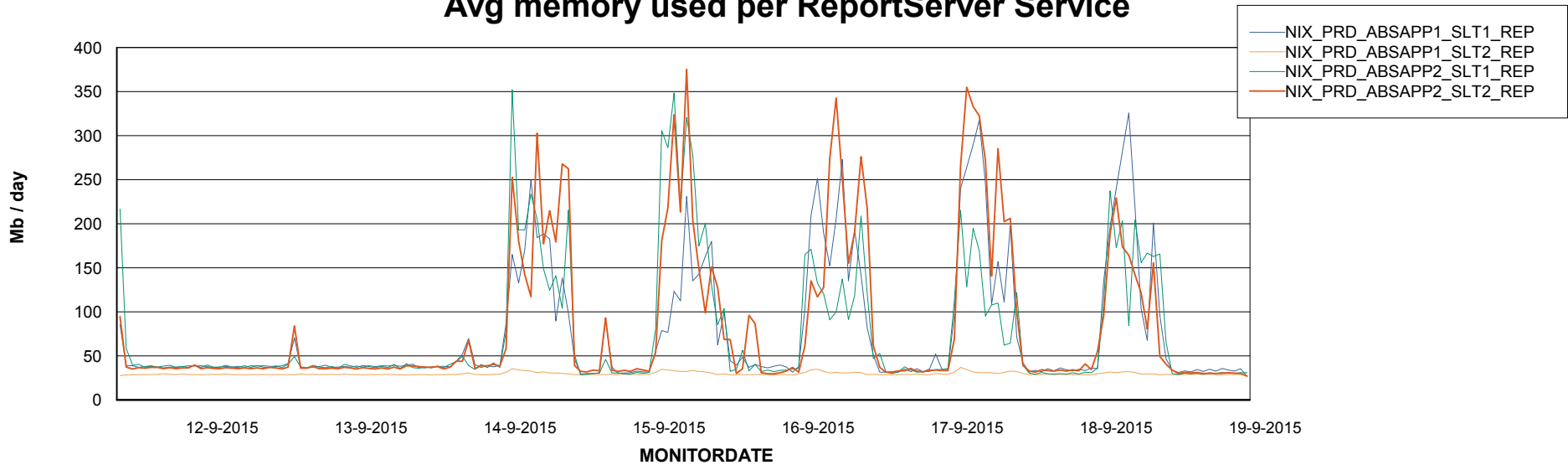


=====  
ABSolute Application ReportServer Services  
=====

## Disaster per ReportServer



## Avg memory used per ReportServer Service



# Weekly SLA Customer Report

Customer NIX\_Production  
Database ID 51



### Disaster per ABS component

