

Weekly SLA Customer Report

Customer JWR Production
 Database ID 43



=====
 HARDDISK USAGE JWR_PRD_JWR-ABS-01
 =====

	Used disk space on / (GB)	Total disk space on / (GB)	Free disk space on / (GB)
19-9-2015	31	49	15
18-9-2015	31	49	15
17-9-2015	31	49	15
16-9-2015	31	49	15
15-9-2015	31	49	15
14-9-2015	31	49	15
13-9-2015	31	49	15

=====
 HARDDISK USAGE JWR_PRD_JWR-ABS-02
 =====

	Used disk space on / (GB)	Total disk space on / (GB)	Free disk space on / (GB)
19-9-2015	33	49	13
18-9-2015	33	49	13
17-9-2015	33	49	13
16-9-2015	33	49	14
15-9-2015	32	49	15
14-9-2015	32	49	15
13-9-2015	32	49	15

Weekly SLA Customer Report

Customer JWR Production
 Database ID 43



=====
 HARDDISK USAGE JWR_PRD_JWR-ODB-01
 =====

	Used disk space on / (GB)	Total disk space on / (GB)	Free disk space on / (GB)
19-9-2015	97	148	44
18-9-2015	97	148	44
17-9-2015	97	148	44
16-9-2015	97	148	44
15-9-2015	97	148	44
14-9-2015	97	148	44
13-9-2015	97	148	44

=====
 HARDDISK USAGE JWR_PRD_JWR-ODB-02
 =====

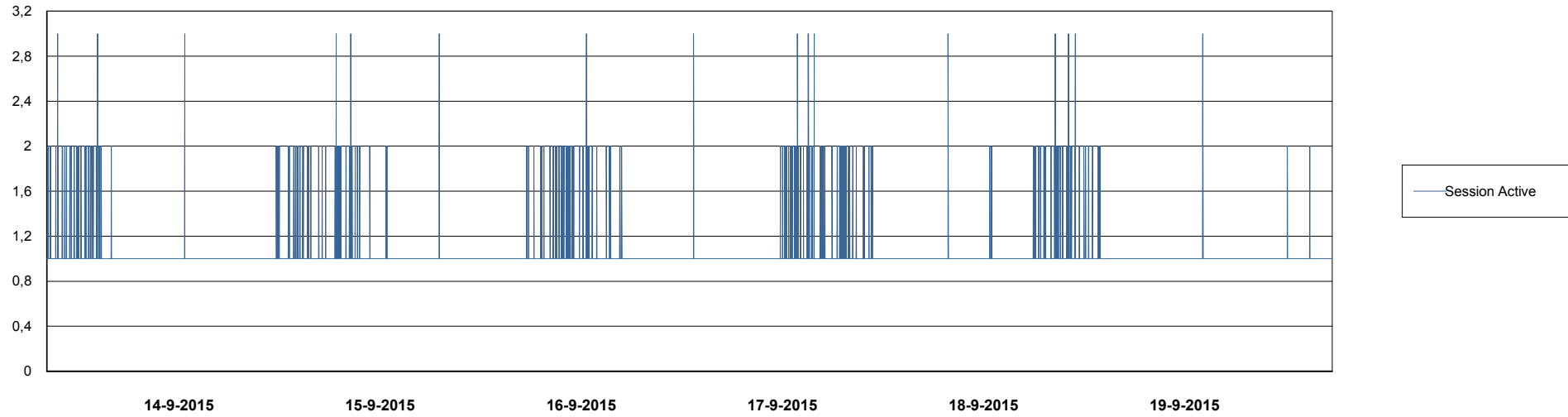
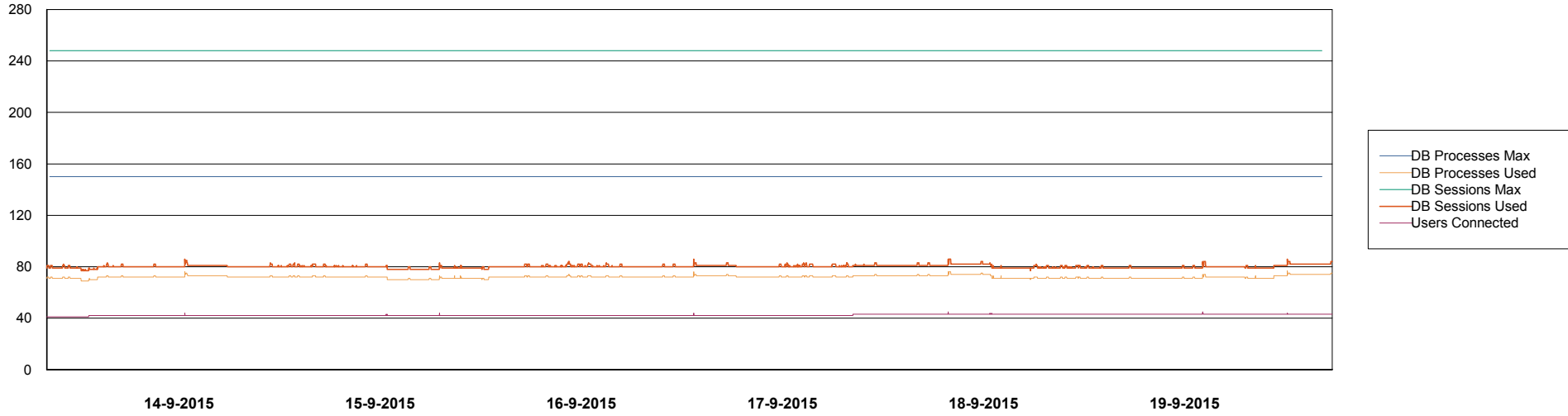
	Used disk space on / (GB)	Total disk space on / (GB)	Free disk space on / (GB)
19-9-2015	94	138	37
18-9-2015	94	138	37
17-9-2015	94	138	37
16-9-2015	94	138	37
15-9-2015	94	138	37
14-9-2015	95	138	36
13-9-2015	94	138	37

Weekly SLA Customer Report

Customer JWR Production
Database ID 43



DATABASE PERFORMANCE JWRDB_Production



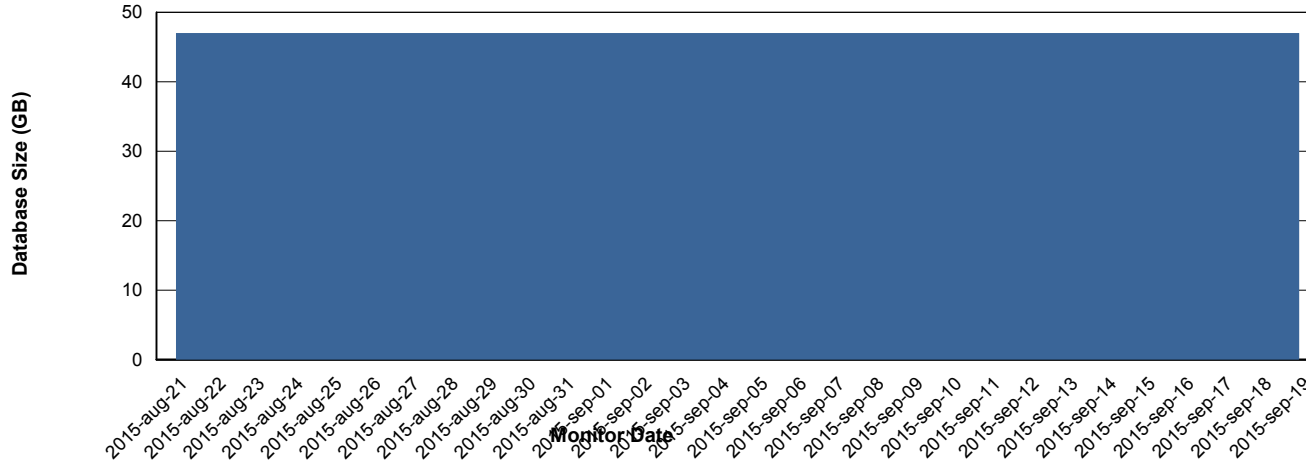
Weekly SLA Customer Report

Customer JWR Production
 Database ID 43



=====
 DATABASE SIZE JWRDB_Production
 =====

Database growth over last month



=====
 DATABASE TABLESPACES JWRDB_Production
 =====

TOTAL DATABASE SIZE PER TABLESPACE

Date	Tablespace Name	Filesize (Gb)	Usedsize (Gb)	Percentage free
19-9-2015	ABSDATA	18	13	28
	INDX	40	33	18
18-9-2015	ABSDATA	18	13	28
	INDX	40	33	18
17-9-2015	ABSDATA	18	13	28
	INDX	40	33	18
16-9-2015	ABSDATA	18	13	28
	INDX	40	33	18
15-9-2015	ABSDATA	18	13	28
	INDX	40	33	18
14-9-2015	ABSDATA	18	13	28
	INDX	40	33	18
13-9-2015	ABSDATA	18	13	28
	INDX	40	33	18

Weekly SLA Customer Report

Customer JWR Production
Database ID 43



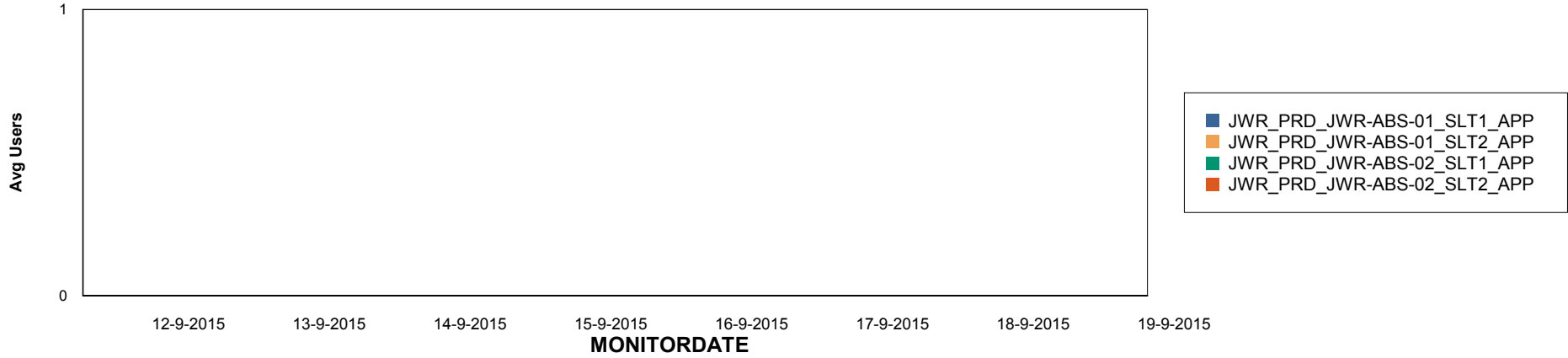
Weekly SLA Customer Report

Customer JWR Production
Database ID 43

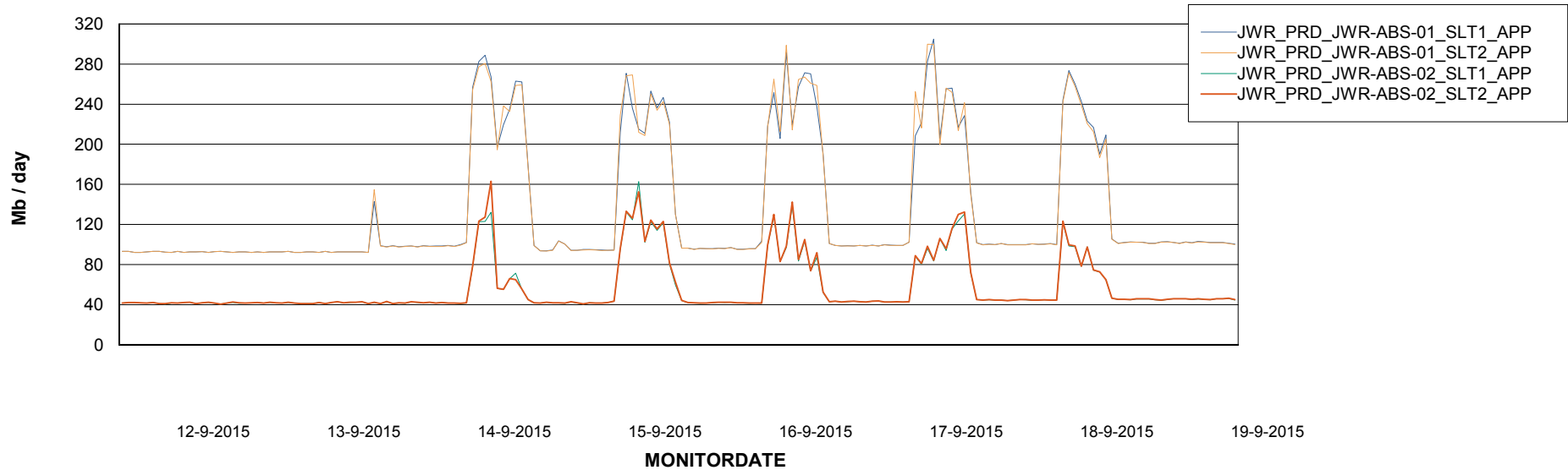


=====
ABSSolute Application Server Services
=====

Disaster per ABS Server



Avg memory used per ABS Server Service



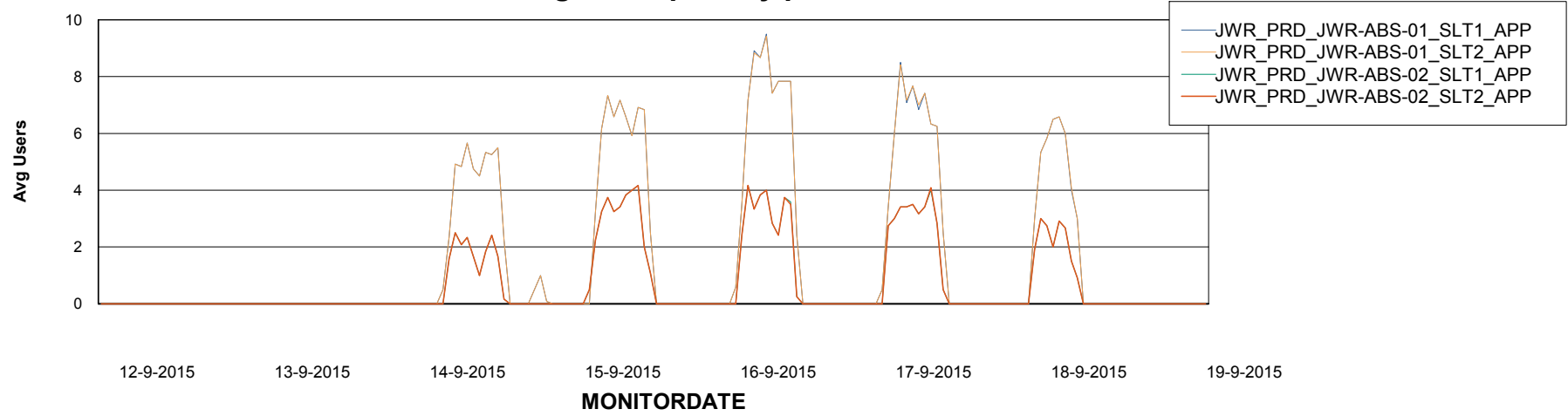
Weekly SLA Customer Report

Customer JWR Production
Database ID 43



=====
ABSolute Application Server Services
=====

Avg users per day per ABS server



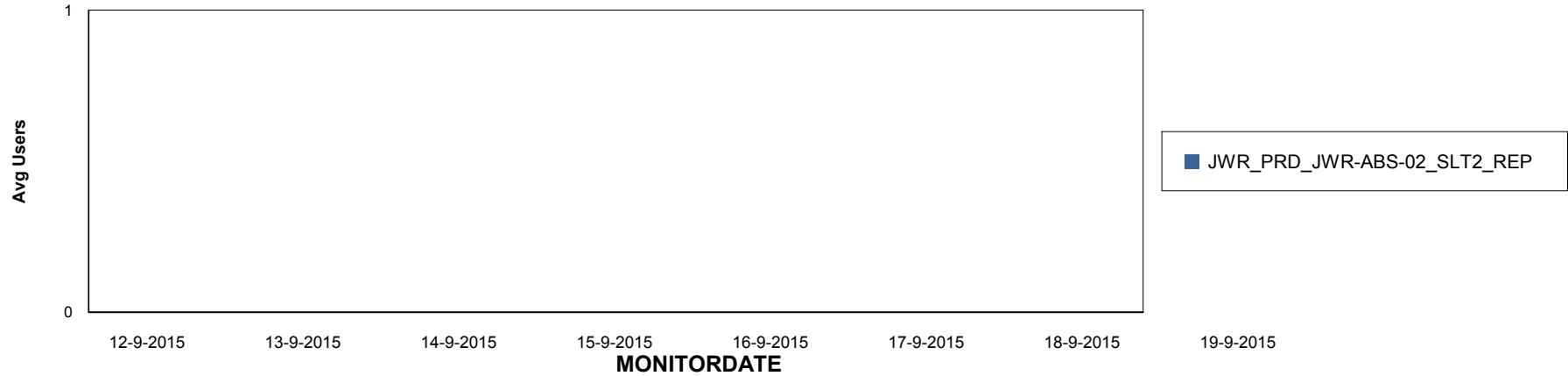
Weekly SLA Customer Report

Customer JWR Production
Database ID 43

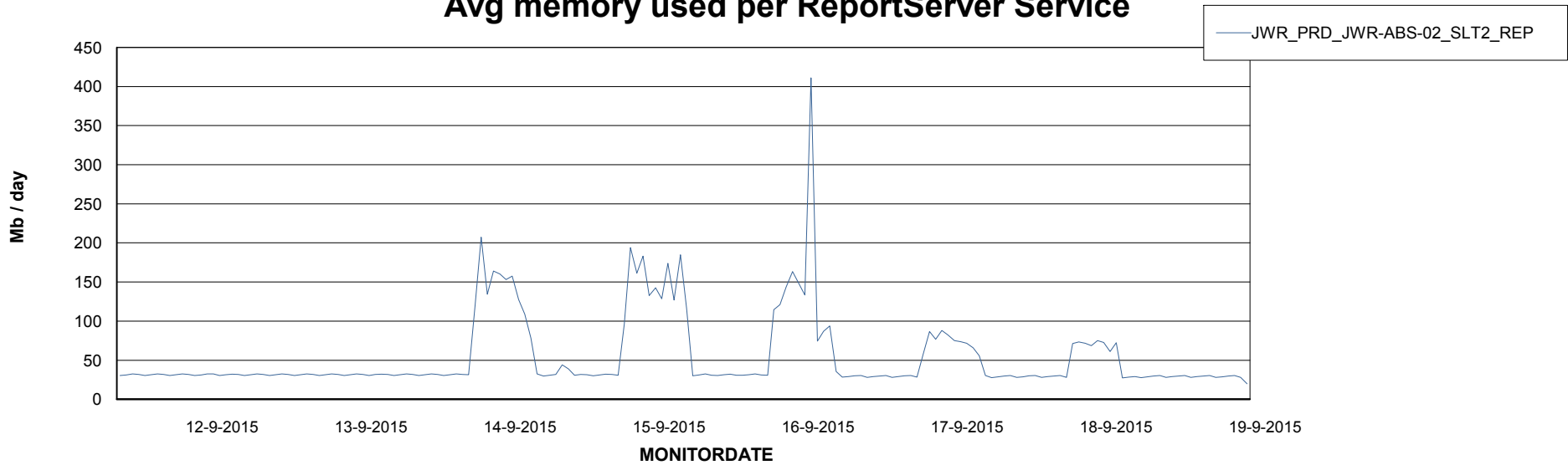


=====
ABSolute Application ReportServer Services
=====

Disaster per ReportServer



Avg memory used per ReportServer Service



Weekly SLA Customer Report

Customer JWR Production
Database ID 43



Disaster per ABS component

