

Weekly SLA Customer Report

Customer BOH_Production
 Database ID 55



=====
 HARDDISK USAGE BOH_PRD_ORACLE1
 =====

	Total disk space on C (GB)	Free disk space on C (GB)	Total disk space on D (GB)	Free disk space on D (GB)	Total disk space on E (GB)	Free disk space on E (GB)
19-9-2015	130	36	100	52	220	157
18-9-2015	130	36	100	52	220	157
17-9-2015	130	36	100	52	220	157
16-9-2015	130	36	100	52	220	157
15-9-2015	130	36	100	52	220	158
14-9-2015	130	36	100	52	220	159
13-9-2015	130	36	100	52	220	159

=====
 HARDDISK USAGE BOH_PRD_ORACLE2
 =====

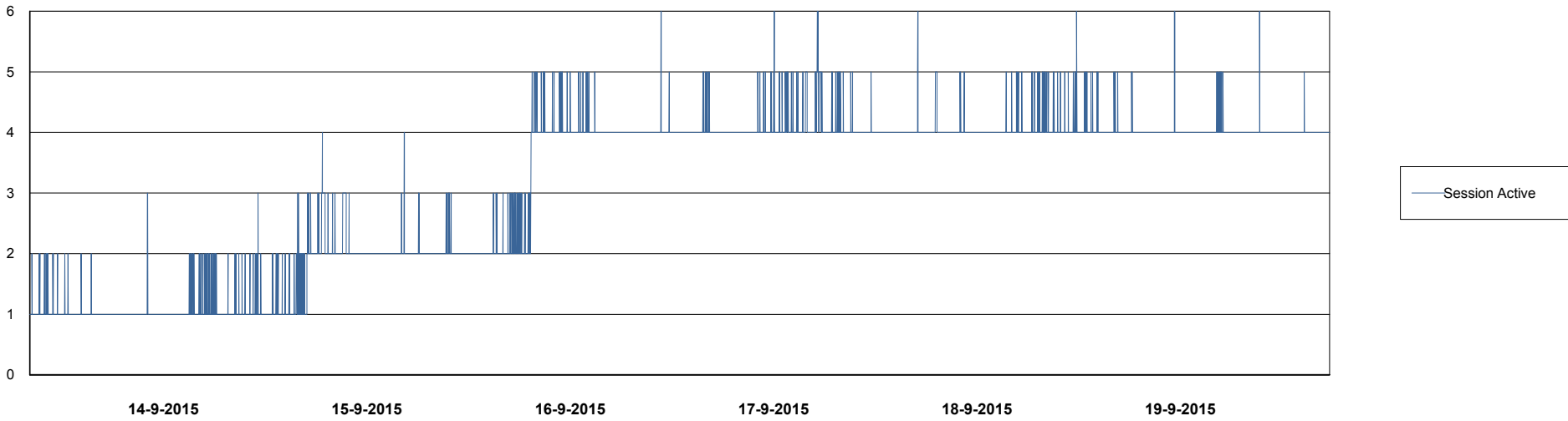
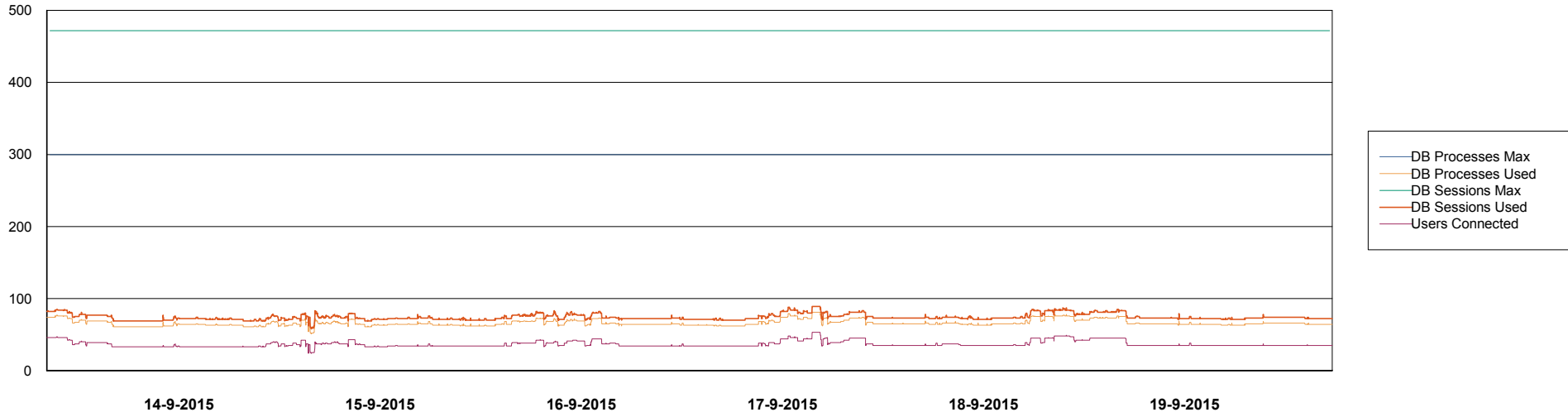
	Total disk space on C (GB)	Free disk space on C (GB)	Total disk space on D (GB)	Free disk space on D (GB)	Total disk space on E (GB)	Free disk space on E (GB)
19-9-2015	557	451	227	179	329	134
18-9-2015	557	451	227	179	329	135
17-9-2015	557	451	227	179	329	136
16-9-2015	557	451	227	179	329	137
15-9-2015	557	451	227	179	329	138
14-9-2015	557	451	227	179	329	140
13-9-2015	557	451	227	179	329	141

Weekly SLA Customer Report

Customer BOH_Production
Database ID 55



DATABASE PERFORMANCE BOHDB_Production

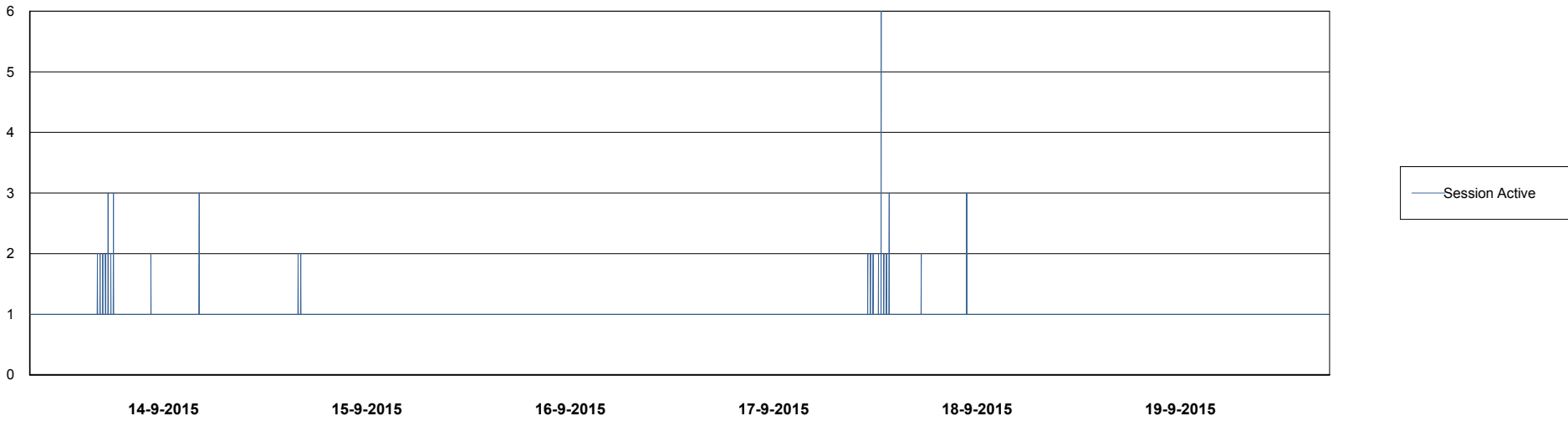
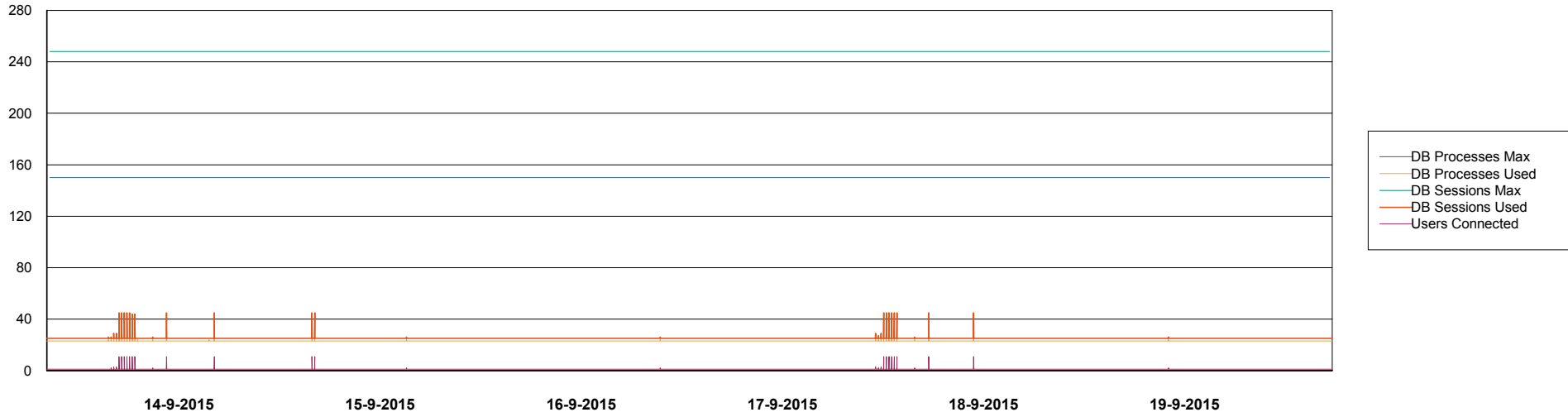


Weekly SLA Customer Report

Customer BOH_Production
Database ID 55



=====
DATABASE PERFORMANCE BOHDB_Standby
=====



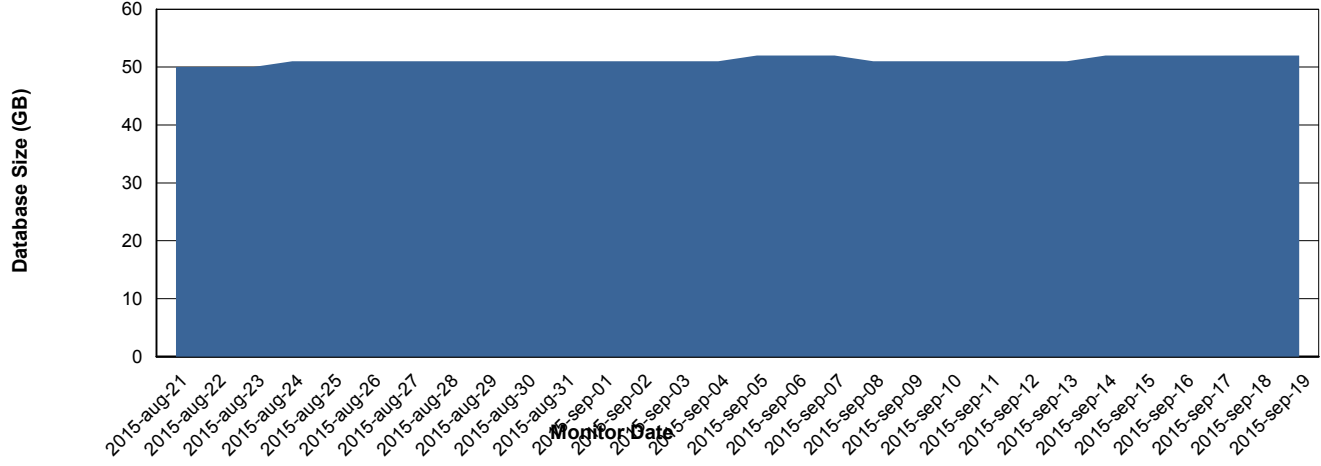
Weekly SLA Customer Report

Customer BOH_Production
 Database ID 55



=====
 DATABASE SIZE BOHDB_Production
 =====

Database growth over last month



=====
 DATABASE TABLESPACES BOHDB_Production
 =====

TOTAL DATABASE SIZE PER TABLESPACE

Date	Tablespace Name	Filesize (Gb)	Usedsize (Gb)	Percentage free
19-9-2015	ABSDATA	35	30	14
	INDX	48	21	56
18-9-2015	ABSDATA	35	30	14
	INDX	48	21	56
17-9-2015	ABSDATA	35	30	14
	INDX	48	20	58
16-9-2015	ABSDATA	35	30	14
	INDX	48	20	58
15-9-2015	ABSDATA	35	30	14
	INDX	48	20	58
14-9-2015	ABSDATA	35	30	14
	INDX	48	20	58
13-9-2015	ABSDATA	35	30	14
	INDX	48	20	58

Weekly SLA Customer Report

Customer BOH_Production
Database ID 55



=====
STANDBY DATABASE HEALTH BOH_Production
=====

Recovery lag for last 7 days

