

Weekly SLA Customer Report

Customer RFL_Production
Database ID 36



=====
HARDDISK USAGE RFL_PRD_ORACLE1
=====

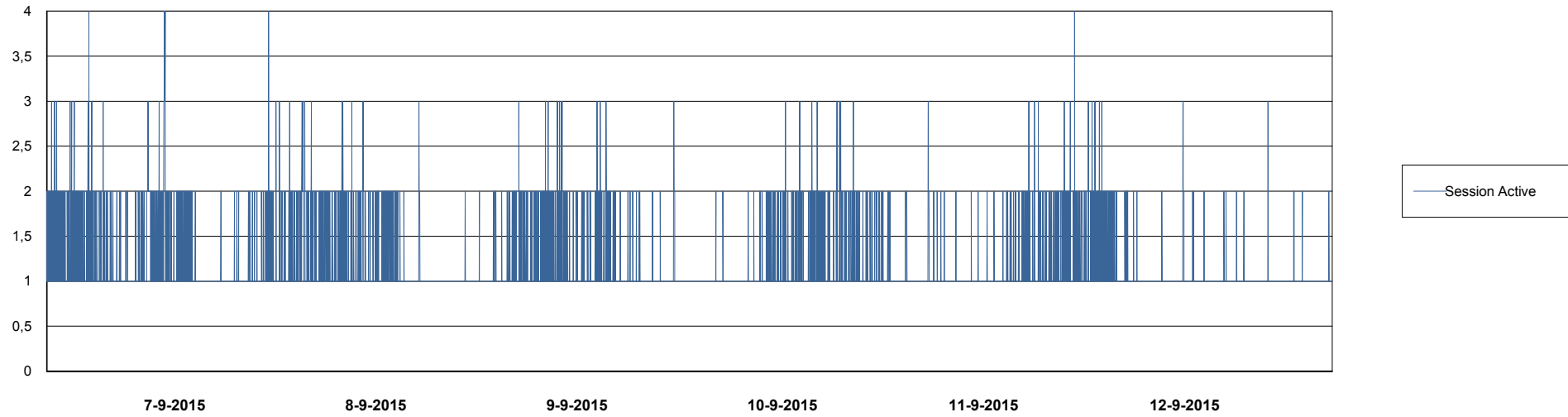
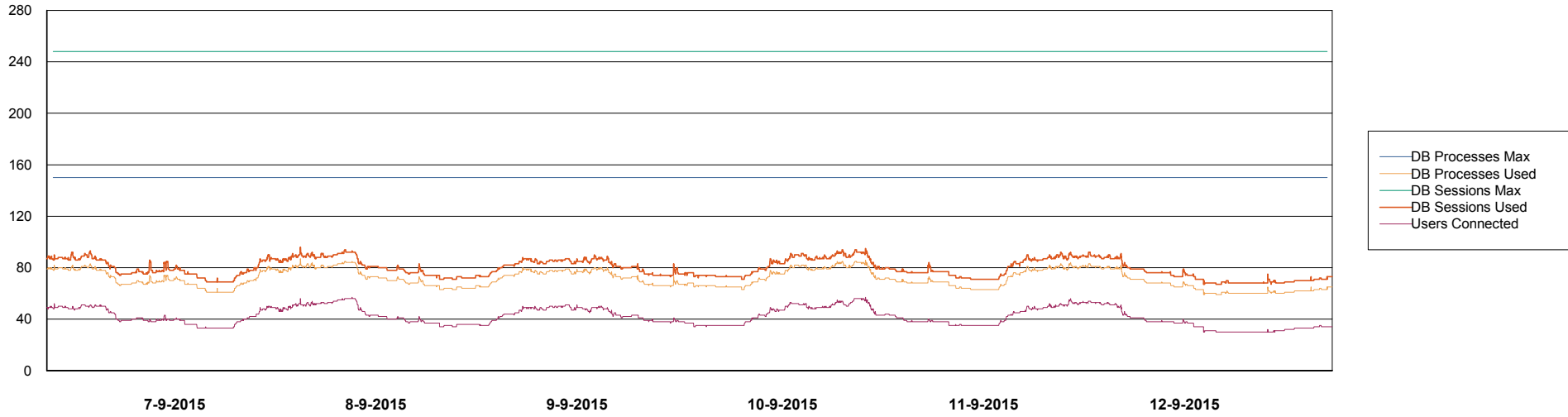
	Total disk space on C (GB)	Free disk space on C (GB)	Total disk space on D (GB)	Free disk space on D (GB)	Total disk space on E (GB)	Free disk space on E (GB)
12-9-2015	279	91	137	93	137	85
11-9-2015	279	91	137	93	137	86
10-9-2015	279	91	137	93	137	86
9-9-2015	279	91	137	93	137	87
8-9-2015	279	92	137	93	137	88
7-9-2015	279	92	137	93	137	89
6-9-2015	279	92	137	93	137	90

Weekly SLA Customer Report

Customer RFL_Production
Database ID 36



DATABASE PERFORMANCE RFLDB_Production

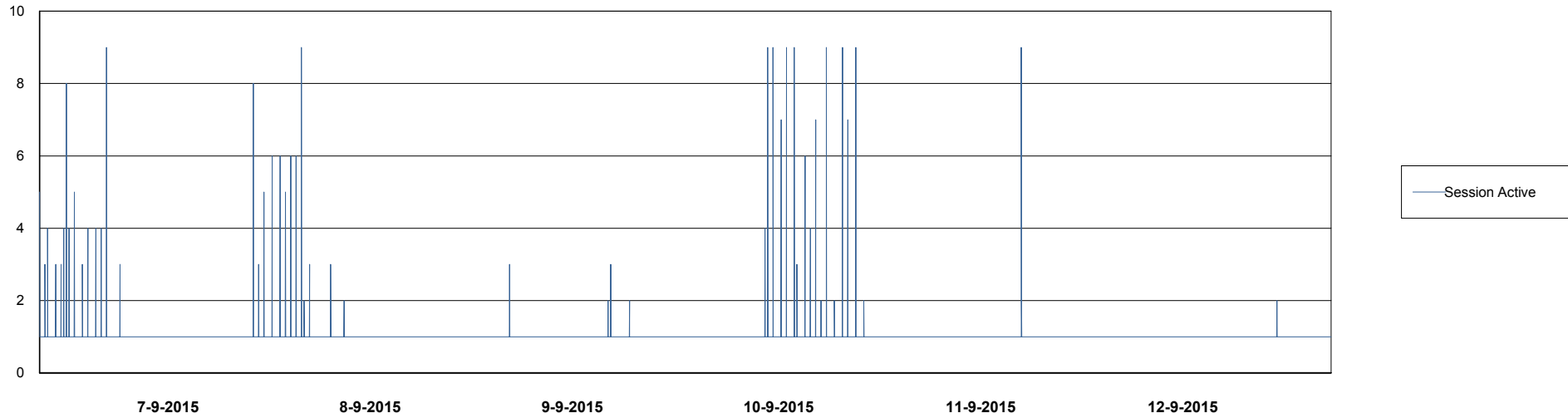
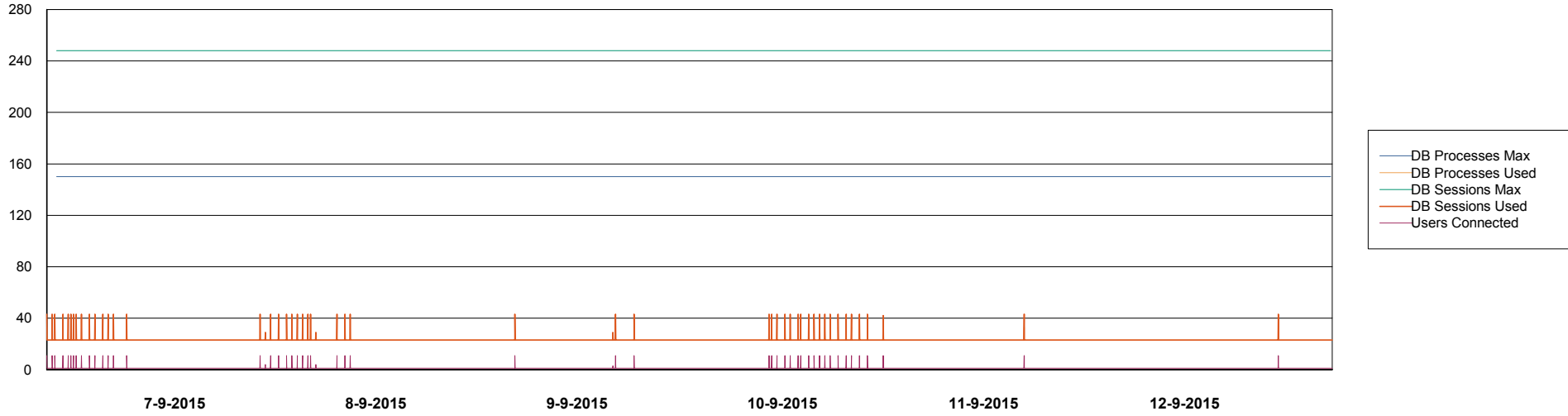


Weekly SLA Customer Report

Customer RFL_Production
Database ID 36



DATABASE PERFORMANCE RFLDB_Standby



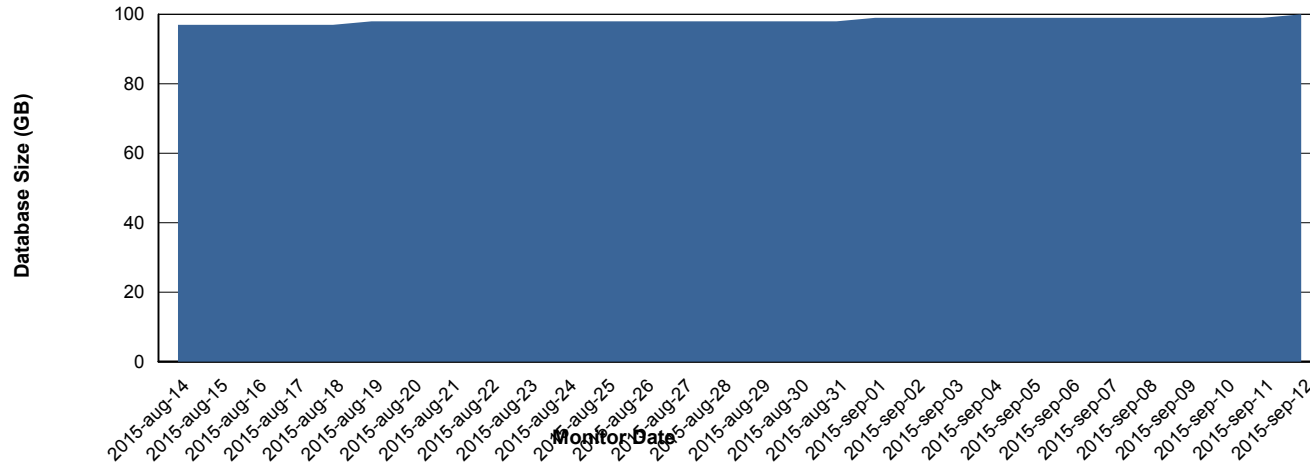
Weekly SLA Customer Report

Customer RFL_Production
 Database ID 36



=====
 DATABASE SIZE RFLDB_Production
 =====

Database growth over last month



=====
 DATABASE TABLESPACES RFLDB_Production
 =====

TOTAL DATABASE SIZE PER TABLESPACE

Date	Tablespace Name	Filesize (Gb)	Usedsize (Gb)	Percentage free
12-9-2015	ABSDATA	28	22	21
	INDX	96	76	21
11-9-2015	ABSDATA	28	22	21
	INDX	96	76	21
10-9-2015	ABSDATA	28	22	21
	INDX	96	76	21
9-9-2015	ABSDATA	28	22	21
	INDX	96	76	21
8-9-2015	ABSDATA	28	22	21
	INDX	96	76	21
7-9-2015	ABSDATA	28	22	21
	INDX	96	75	22
6-9-2015	ABSDATA	28	22	21
	INDX	96	75	22

Weekly SLA Customer Report

Customer RFL_Production
Database ID 36



=====
STANDBY DATABASE HEALTH RFL_Production
=====

Recovery lag for last 7 days

