

# Weekly SLA Customer Report

Customer NIX\_Production  
Database ID 51



=====  
HARDDISK USAGE NIX\_PRD\_ABSAPP1  
=====

	Total disk space on C (GB)	Free disk space on C (GB)
14-9-2015	200	178
13-9-2015	200	178
12-9-2015	200	178
11-9-2015	200	178
10-9-2015	200	178
9-9-2015	200	178
8-9-2015	200	178

=====  
HARDDISK USAGE NIX\_PRD\_ABSAPP2  
=====

	Total disk space on C (GB)	Free disk space on C (GB)
14-9-2015	200	177
13-9-2015	200	177
12-9-2015	200	177
11-9-2015	200	177
10-9-2015	200	178
9-9-2015	200	178
8-9-2015	200	178

## Weekly SLA Customer Report

Customer      NIX\_Production  
 Database ID    51



=====  
 HARDDISK USAGE    NIX\_PRD\_ABSWEB01  
 =====

	Total disk space on C (GB)	Free disk space on C (GB)
14-9-2015	300	281
13-9-2015	300	281
12-9-2015	300	281
11-9-2015	300	281
10-9-2015	300	281
9-9-2015	300	281
8-9-2015	300	281

=====  
 HARDDISK USAGE    NIX\_PRD\_ORACLE\_B11  
 =====

	Total disk space on C (GB)	Free disk space on C (GB)	Total disk space on E (GB)	Free disk space on E (GB)	Total disk space on F (GB)	Free disk space on F (GB)	Total disk space on G (GB)	Free disk space on G (GB)
14-9-2015	279	204	558	387	558	458	279	236
13-9-2015	279	204	558	388	558	458	279	236
12-9-2015	279	204	558	388	558	458	279	236
11-9-2015	279	204	558	388	558	458	279	236
10-9-2015	279	204	558	388	558	458	279	236
9-9-2015	279	204	558	388	558	458	279	236
8-9-2015	279	204	558	388	558	458	279	236

## Weekly SLA Customer Report

Customer      NIX\_Production  
 Database ID    51



=====  
 HARDDISK USAGE    NIX\_PRD\_ORCDB1  
 =====

	Total disk space on C (GB)	Free disk space on C (GB)	Total disk space on E (GB)	Free disk space on E (GB)	Total disk space on F (GB)	Free disk space on F (GB)	Total disk space on G (GB)	Free disk space on G (GB)
14-9-2015	279	124	558	494	558	457	279	76
13-9-2015	279	124	558	494	558	457	279	79
12-9-2015	279	124	558	494	558	457	279	80
11-9-2015	279	124	558	494	558	457	279	81
10-9-2015	279	124	558	494	558	457	279	87
9-9-2015	279	125	558	493	558	456	279	89
8-9-2015	279	125	558	494	558	457	279	92

=====  
 HARDDISK USAGE    NIX\_PRD\_ORCDB2  
 =====

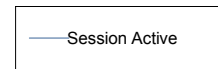
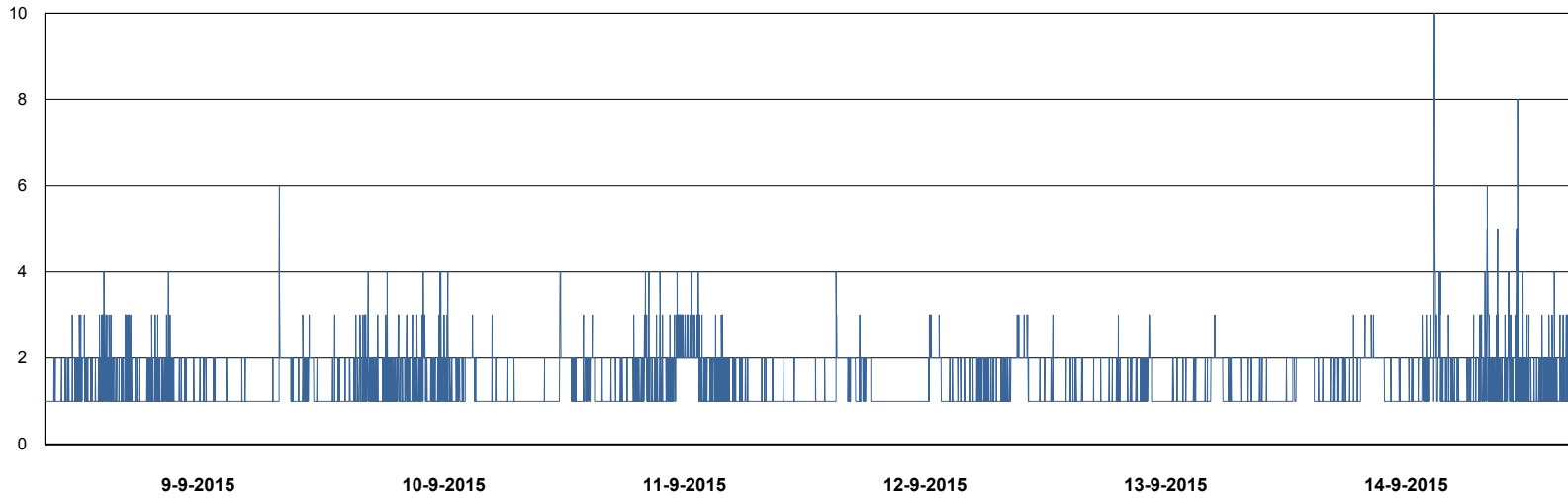
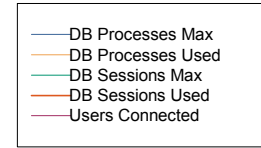
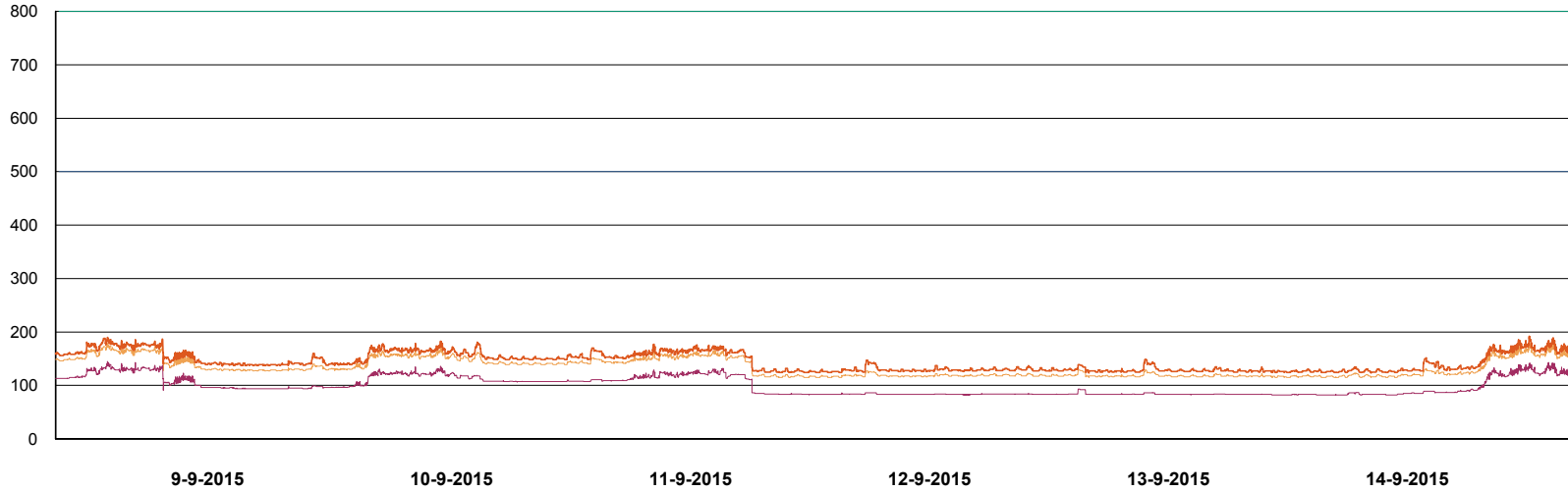
	Total disk space on C (GB)	Free disk space on C (GB)	Total disk space on E (GB)	Free disk space on E (GB)	Total disk space on F (GB)	Free disk space on F (GB)	Total disk space on G (GB)	Free disk space on G (GB)
14-9-2015	279	237	558	403	558	457	279	111
13-9-2015	279	237	558	403	558	457	279	113
12-9-2015	279	237	558	403	558	457	279	114
11-9-2015	279	237	558	403	558	457	279	116
10-9-2015	279	237	558	403	558	457	279	121
9-9-2015	279	237	558	403	558	457	279	124
8-9-2015	279	237	558	403	558	457	279	126

# Weekly SLA Customer Report

Customer NIX\_Production  
Database ID 51



DATABASE PERFORMANCE NIXDB\_Production



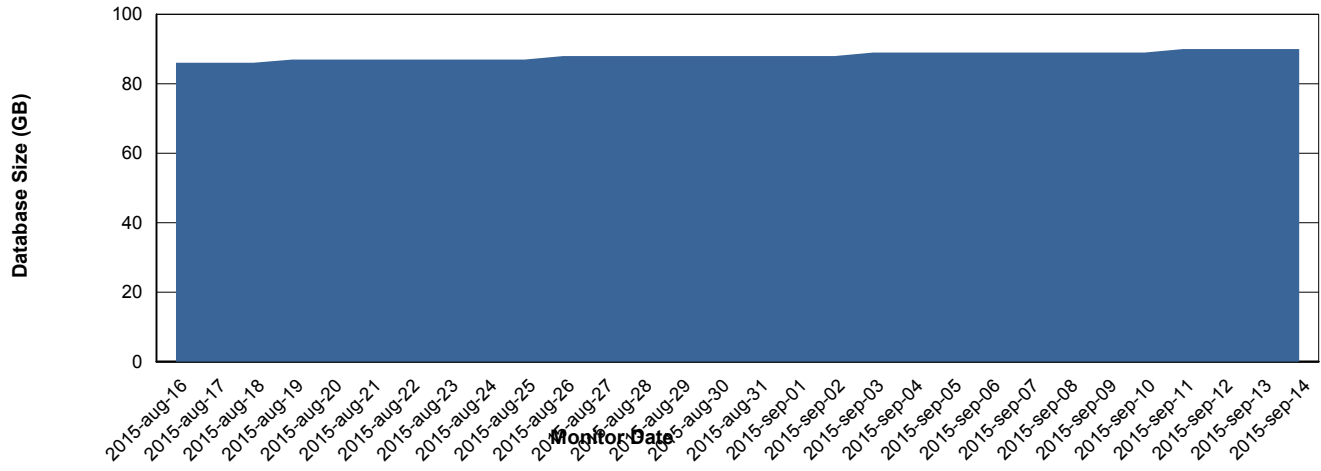
# Weekly SLA Customer Report

Customer NIX\_Production  
 Database ID 51



=====  
 DATABASE SIZE NIXDB\_Production  
 =====

## Database growth over last month



=====  
 DATABASE TABLESPACES NIXDB\_Production  
 =====

### TOTAL DATABASE SIZE PER TABLESPACE

Date	Tablespace Name	Filesize (Gb)	Usedsize (Gb)	Percentage free
14-9-2015	ABSDATA	50	35	30
	INDX	100	54	46
13-9-2015	ABSDATA	50	35	30
	INDX	100	54	46
12-9-2015	ABSDATA	50	35	30
	INDX	100	54	46
11-9-2015	ABSDATA	50	35	30
	INDX	100	54	46
10-9-2015	ABSDATA	50	34	32
	INDX	100	53	47
9-9-2015	ABSDATA	50	34	32
	INDX	100	53	47
8-9-2015	ABSDATA	50	34	32
	INDX	100	53	47

# Weekly SLA Customer Report

---

Customer NIX\_Production  
Database ID 51



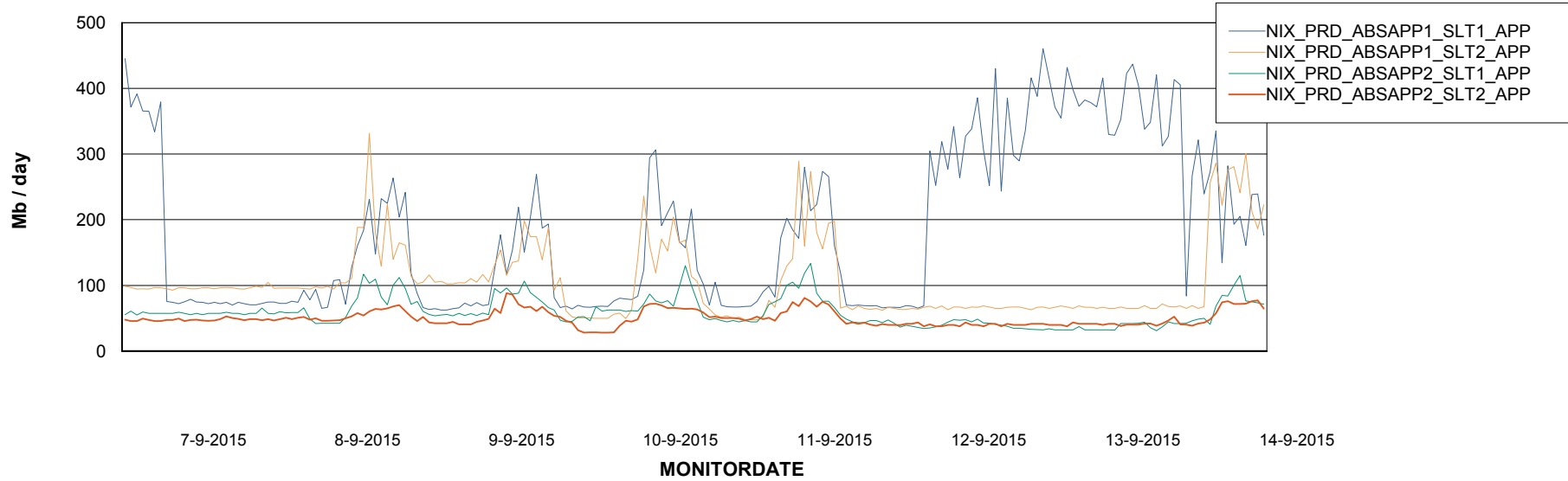
# Weekly SLA Customer Report

Customer NIX\_Production  
Database ID 51



=====  
ABSolute Application Server Services  
=====

## Avg memory used per ABS Server Service



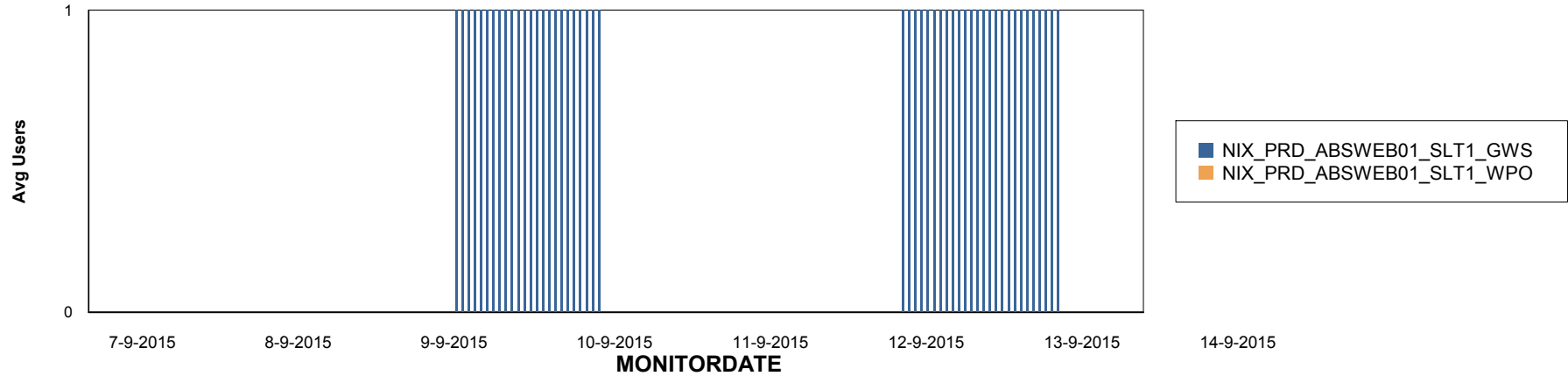
# Weekly SLA Customer Report

Customer NIX\_Production  
Database ID 51

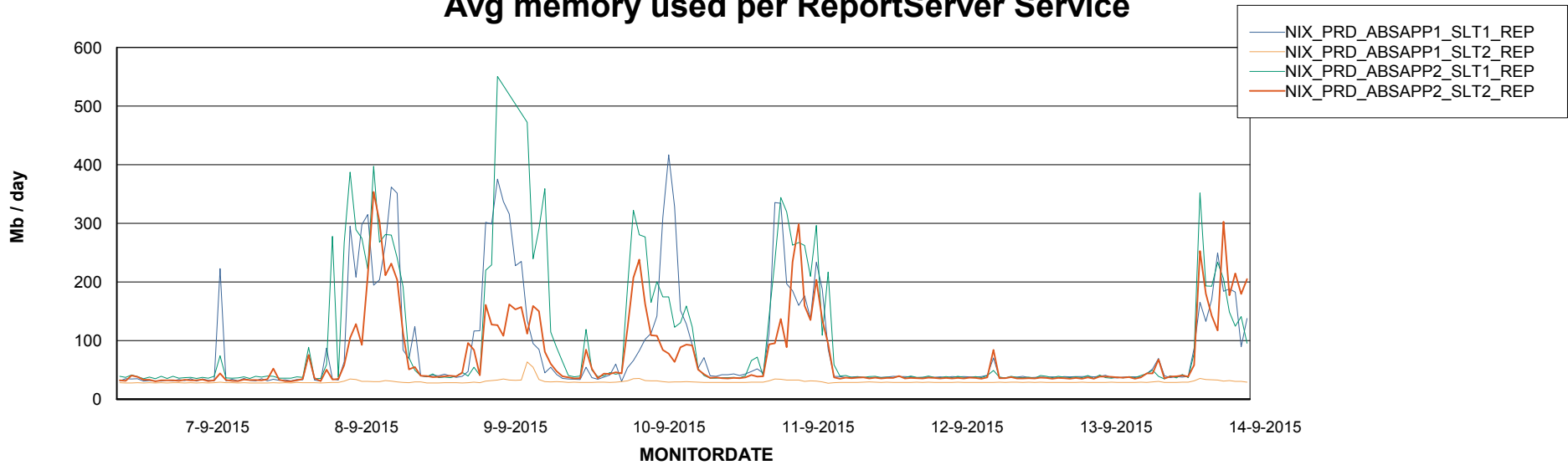


## ABSSolute Application ReportServer Services

### Disaster per ReportServer



### Avg memory used per ReportServer Service



# Weekly SLA Customer Report

Customer NIX\_Production  
Database ID 51



### Disaster per ABS component

