

Weekly SLA Customer Report

Customer FIS_Production
 Database ID 46



=====
 HARDDISK USAGE FIS_PRD_ORACLE1
 =====

	Total disk space on C (GB)	Free disk space on C (GB)	Total disk space on L (GB)	Free disk space on L (GB)	Total disk space on O (GB)	Free disk space on O (GB)
12-9-2015	279	223	279	224	186	30
11-9-2015	279	223	279	227	186	30
10-9-2015	279	223	279	227	186	30
9-9-2015	279	223	279	227	186	30
8-9-2015	279	223	279	227	186	30
7-9-2015	279	223	279	226	186	30
6-9-2015	279	223	279	226	186	30

=====
 HARDDISK USAGE FIS_PRD_ORACLE2
 =====

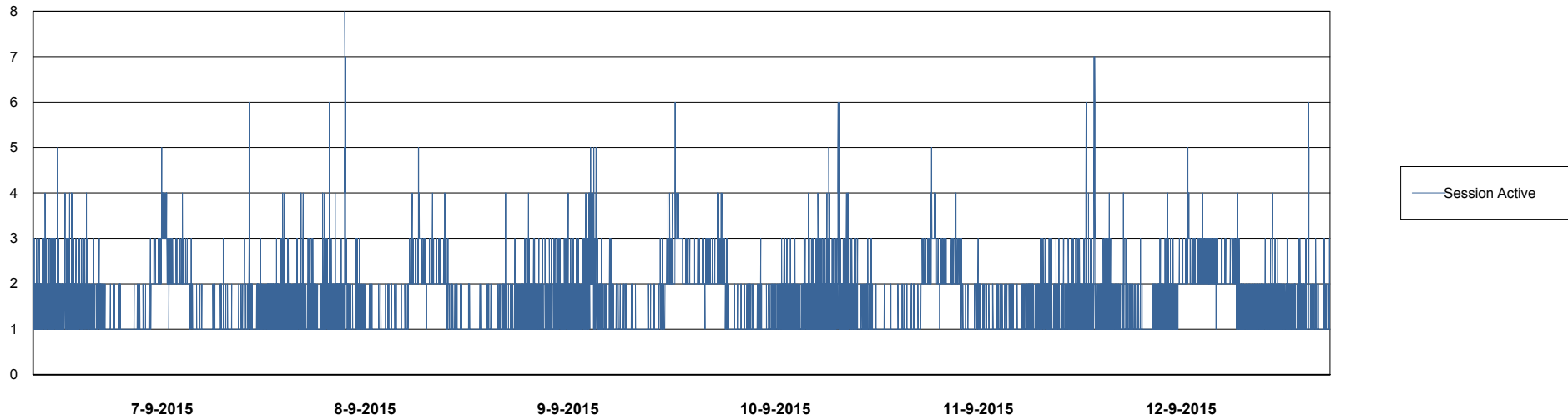
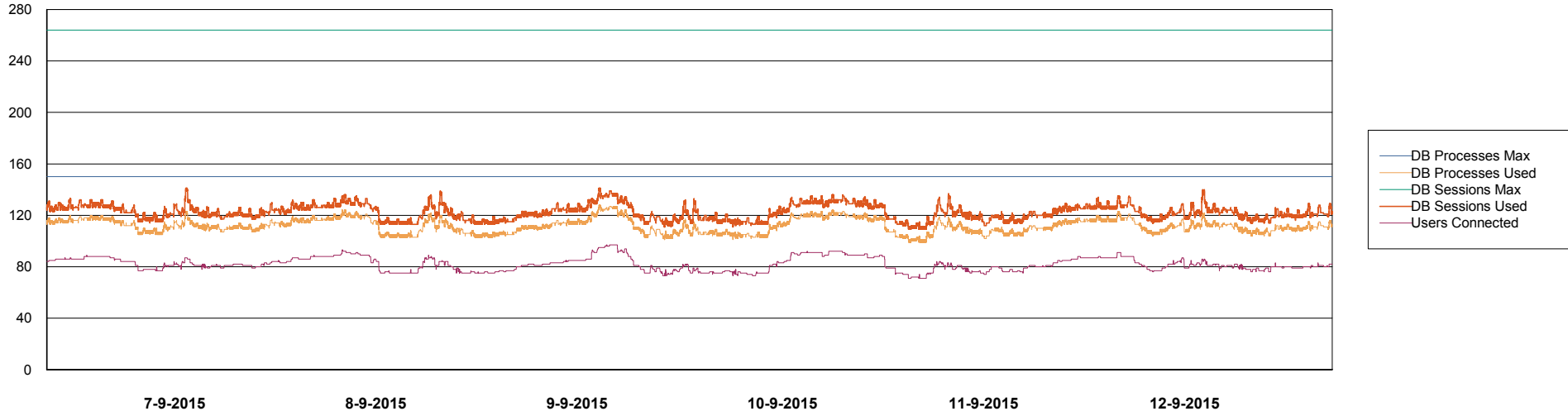
	Total disk space on C (GB)	Free disk space on C (GB)	Total disk space on L (GB)	Free disk space on L (GB)	Total disk space on O (GB)	Free disk space on O (GB)
12-9-2015	279	228	279	113	186	30
11-9-2015	279	228	279	113	186	30
10-9-2015	279	228	279	112	186	30
9-9-2015	279	228	279	112	186	30
8-9-2015	279	228	279	112	186	30
7-9-2015	279	228	279	111	186	30
6-9-2015	279	228	279	111	186	30

Weekly SLA Customer Report

Customer FIS_Production
Database ID 46



DATABASE PERFORMANCE FISDB_Production

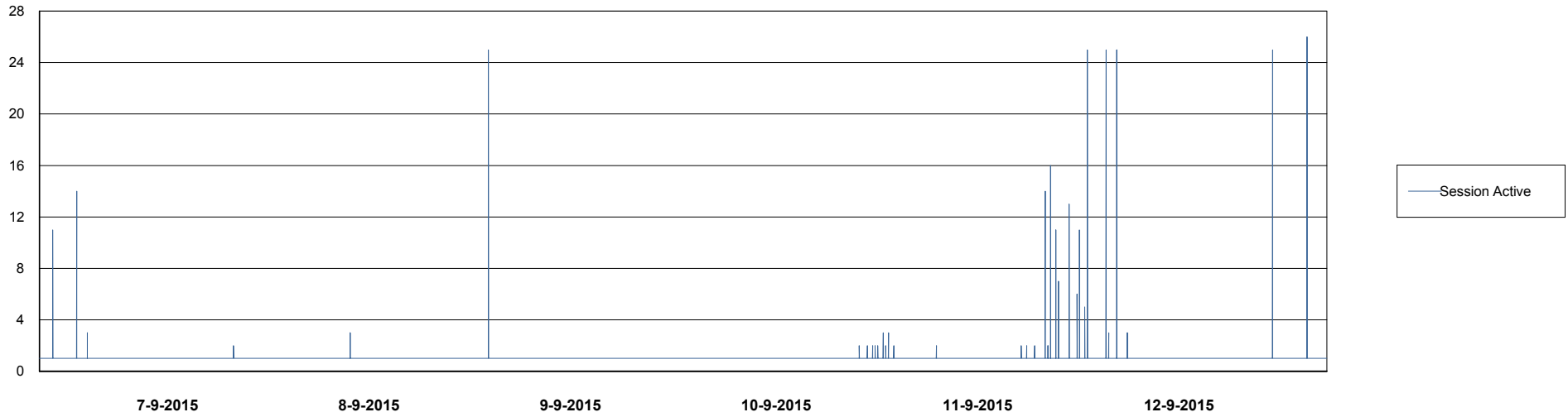
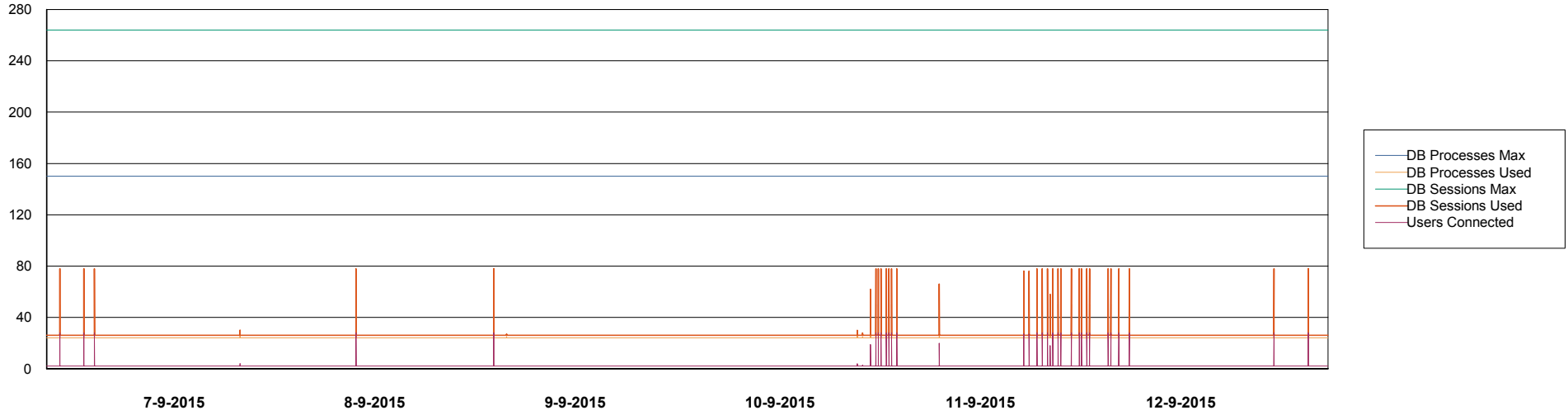


Weekly SLA Customer Report

Customer FIS_Production
Database ID 46



=====
DATABASE PERFORMANCE FISDB_Standby
=====



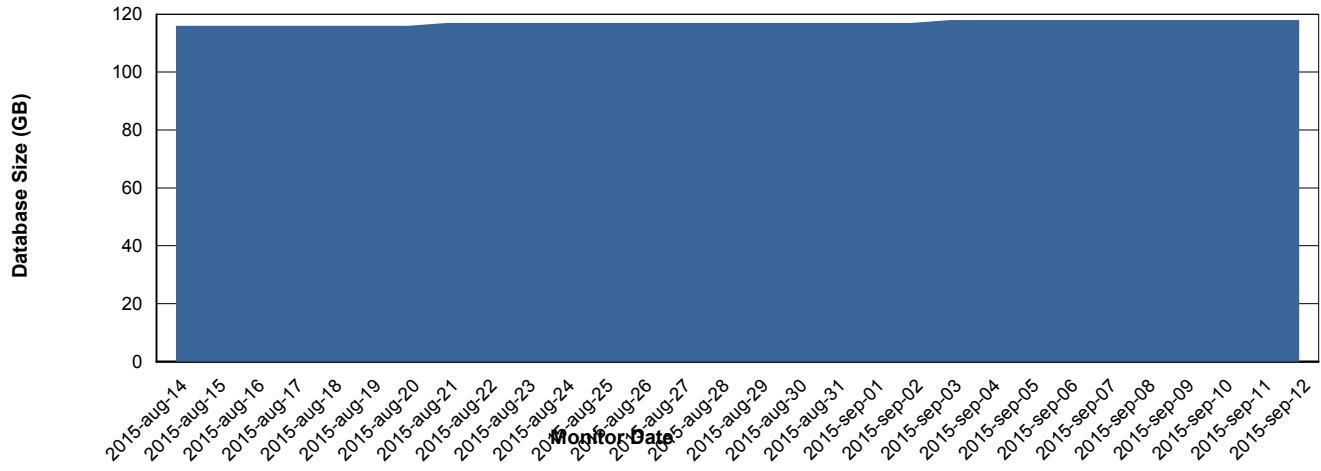
Weekly SLA Customer Report

Customer FIS_Production
 Database ID 46



=====
 DATABASE SIZE FISDB_Production
 =====

Database growth over last month



=====
 DATABASE TABLESPACES FISDB_Production
 =====

TOTAL DATABASE SIZE PER TABLESPACE

Date	Tablespace Name	Filesize (Gb)	Usedsize (Gb)	Percentage free
12-9-2015	ABSDATA	62	53	15
	INDX	79	60	24
11-9-2015	ABSDATA	62	53	15
	INDX	79	60	24
10-9-2015	ABSDATA	62	53	15
	INDX	79	60	24
9-9-2015	ABSDATA	62	53	15
	INDX	79	60	24
8-9-2015	ABSDATA	62	53	15
	INDX	79	60	24
7-9-2015	ABSDATA	62	53	15
	INDX	79	60	24
6-9-2015	ABSDATA	62	53	15
	INDX	79	60	24

