

Weekly SLA Customer Report

Customer CSC_Production
 Database ID 50



=====
 HARDDISK USAGE CSC_PRD_ABSSRV
 =====

	Total disk space on C (GB)	Free disk space on C (GB)	Total disk space on D (GB)	Free disk space on D (GB)	Total disk space on E (GB)	Free disk space on E (GB)
12-9-2015	102	55	220	130	325	72
11-9-2015	102	55	220	130	325	58
10-9-2015	102	55	220	130	325	54
9-9-2015	102	55	220	130	325	57
8-9-2015	102	55	220	130	325	61
7-9-2015	102	55	220	130	325	65
6-9-2015	102	55	220	130	325	68

=====
 HARDDISK USAGE CSC_PRD_ABS01
 =====

	Total disk space on C (GB)	Free disk space on C (GB)	Total disk space on D (GB)	Free disk space on D (GB)	Total disk space on E (GB)	Free disk space on E (GB)
12-9-2015	110	34	210	115	500	210
11-9-2015	110	34	210	115	500	208
10-9-2015	110	39	210	115	500	208
9-9-2015	110	43	210	115	500	208
8-9-2015	110	46	210	115	500	209
7-9-2015	110	49	210	115	500	209
6-9-2015	110	42	210	115	500	210

Weekly SLA Customer Report

Customer CSC_Production
Database ID 50



=====
HARDDISK USAGE CSC_PRD_ABS02
=====

	Total disk space on C (GB)	Free disk space on C (GB)
12-9-2015	80	43
11-9-2015	80	43
10-9-2015	80	43
9-9-2015	80	43
8-9-2015	80	43
7-9-2015	80	43
6-9-2015	80	43

=====
HARDDISK USAGE CSC_PRD_WEBSRV
=====

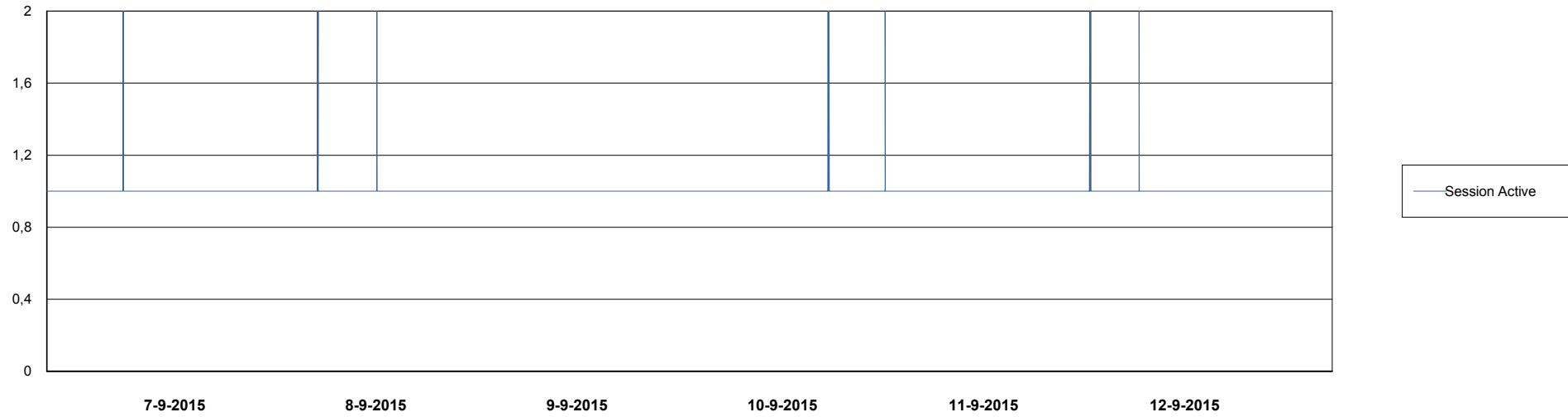
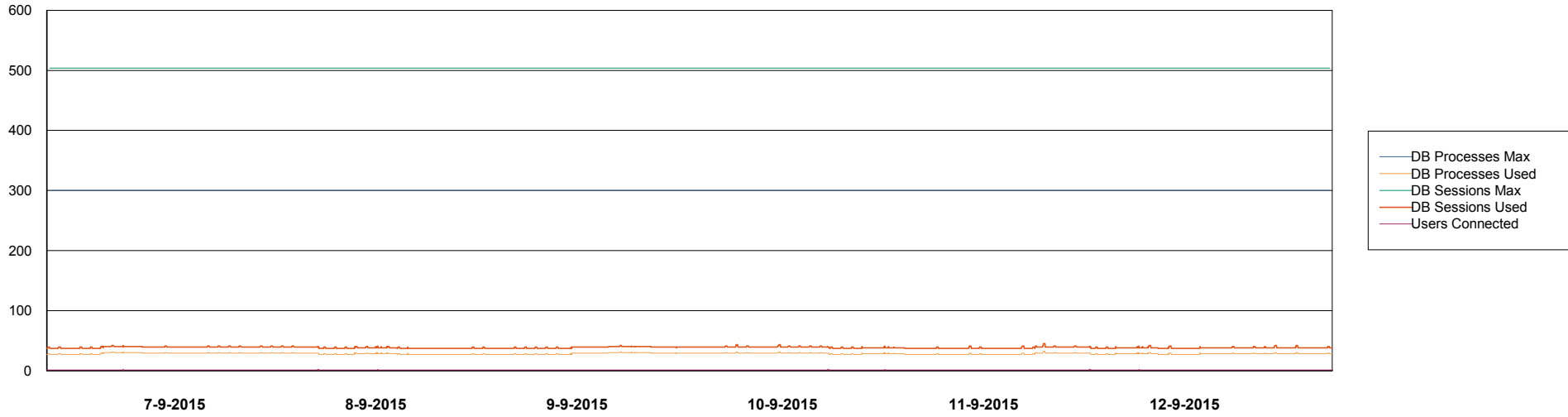
	Used disk space on C (GB)	Total disk space on C (GB)	Free disk space on C (GB)
12-9-2015	36	59	23
11-9-2015	36	59	23
10-9-2015	36	59	23
9-9-2015	36	59	23
8-9-2015	36	59	23
7-9-2015	36	59	23
6-9-2015	36	59	23

Weekly SLA Customer Report

Customer CSC_Production
Database ID 50



DATABASE PERFORMANCE CSCDB_Production

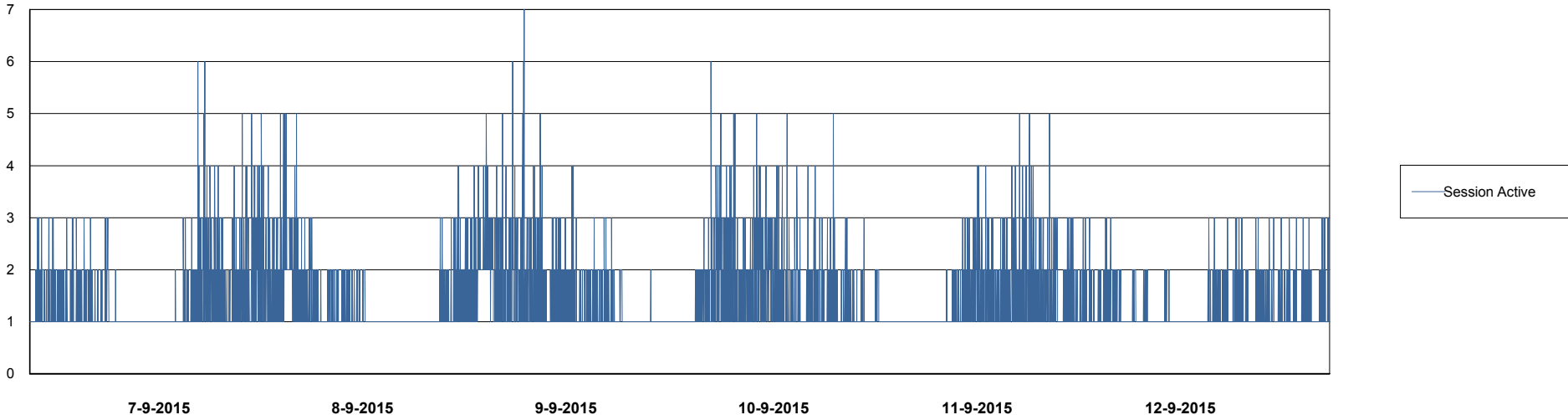
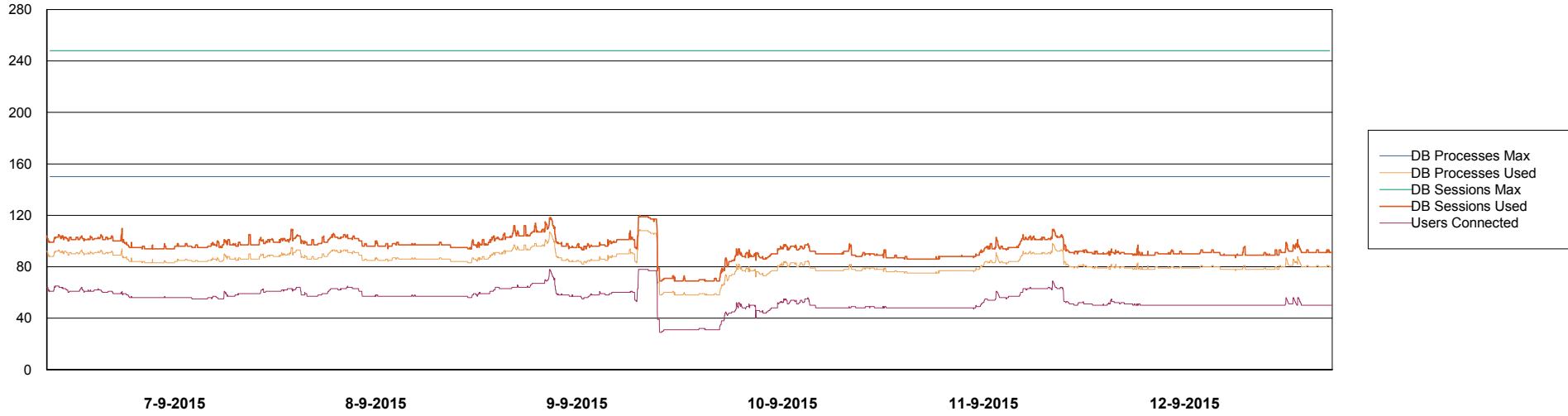


Weekly SLA Customer Report

Customer CSC_Production
Database ID 50



=====
DATABASE PERFORMANCE CSCDB_Standby
=====



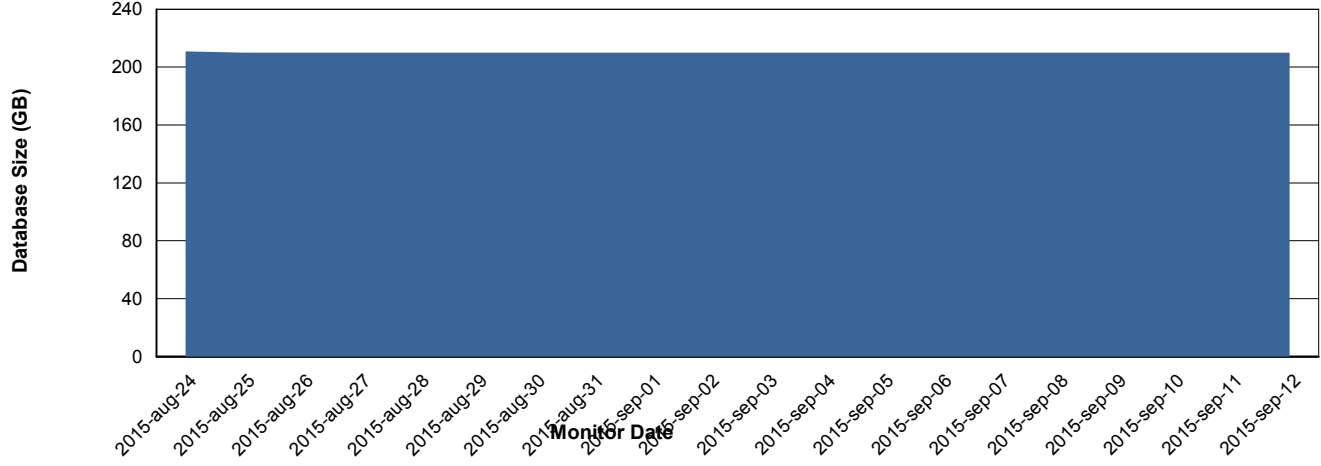
Weekly SLA Customer Report

Customer CSC_Production
 Database ID 50



=====
 DATABASE SIZE CSCDB_Production
 =====

Database growth over last month



=====
 DATABASE TABLESPACES CSCDB_Production
 =====

TOTAL DATABASE SIZE PER TABLESPACE

Date	Tablespace Name	Filesize (Gb)	Usedsize (Gb)	Percentage free
12-9-2015	ABSDATA	68	56	18
	INDX	183	153	16
11-9-2015	ABSDATA	68	56	18
	INDX	183	153	16
10-9-2015	ABSDATA	68	56	18
	INDX	183	153	16
9-9-2015	ABSDATA	68	56	18
	INDX	183	153	16
8-9-2015	ABSDATA	68	56	18
	INDX	183	153	16
7-9-2015	ABSDATA	68	56	18
	INDX	183	153	16
6-9-2015	ABSDATA	68	56	18
	INDX	183	153	16

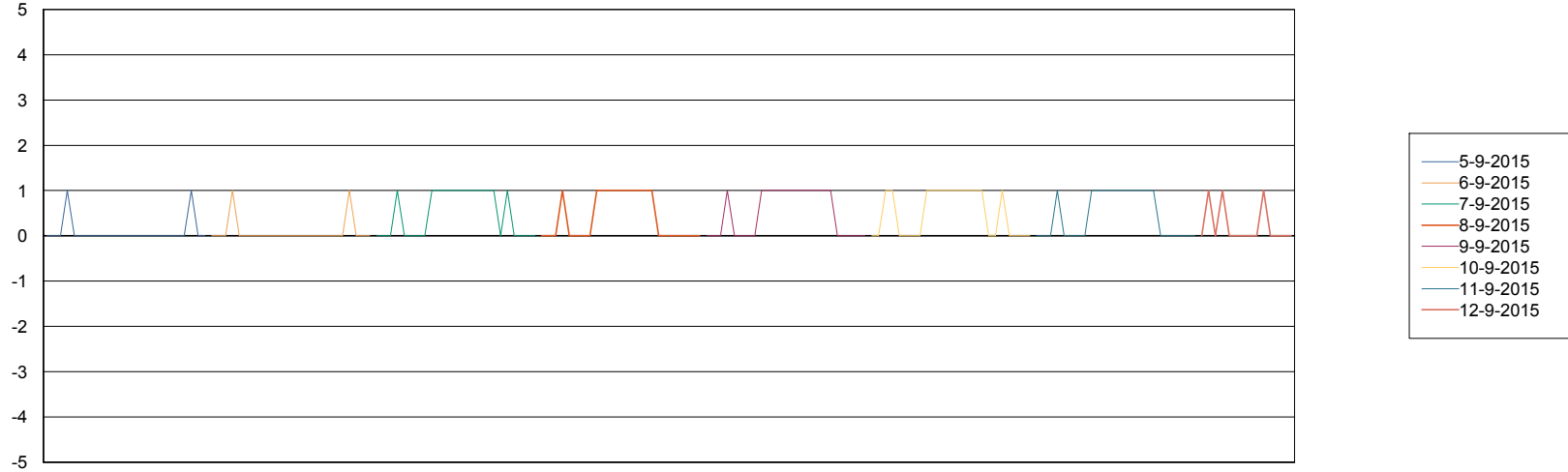
Weekly SLA Customer Report

Customer CSC_Production
Database ID 50



=====
STANDBY DATABASE HEALTH CSC_Production
=====

Recovery lag for last 7 days



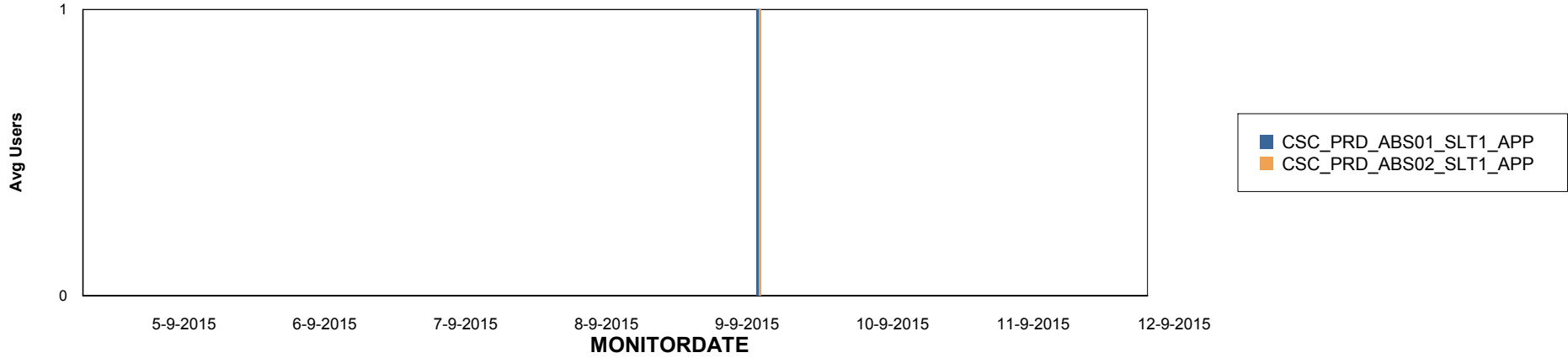
Weekly SLA Customer Report

Customer CSC_Production
Database ID 50

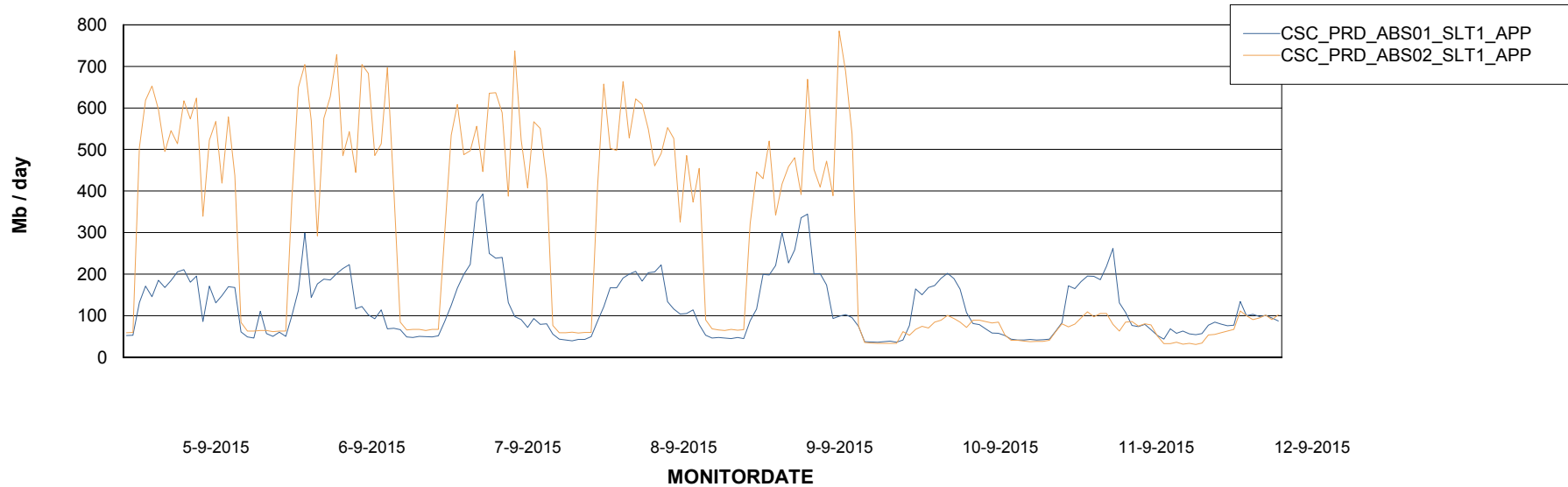


ABSolute Application Server Services

Disaster per ABS Server



Avg memory used per ABS Server Service



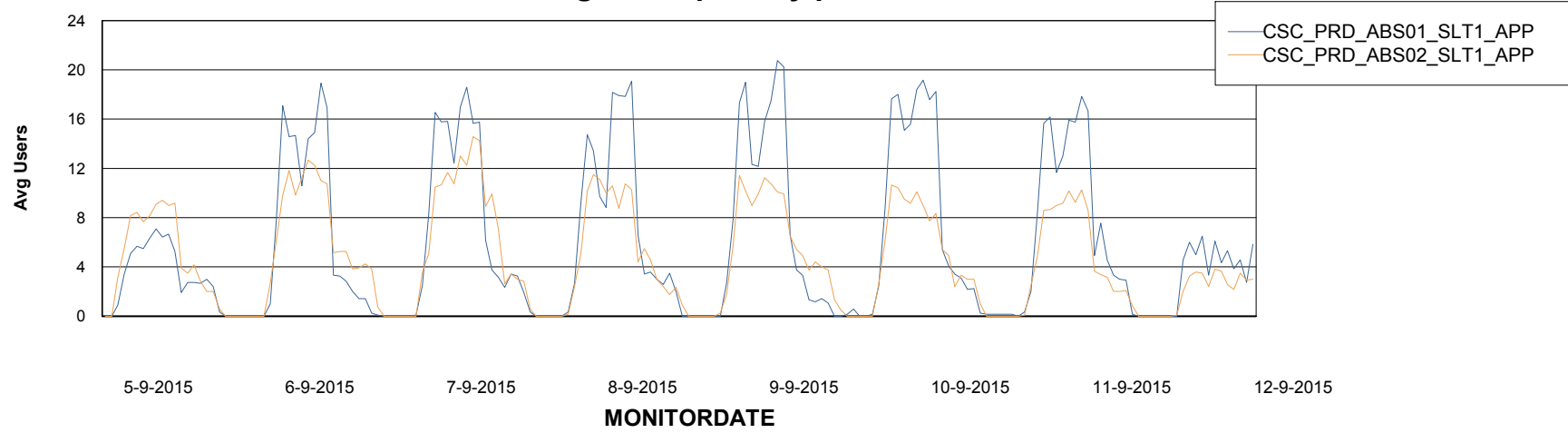
Weekly SLA Customer Report

Customer CSC_Production
Database ID 50



=====
ABSolute Application Server Services
=====

Avg users per day per ABS server



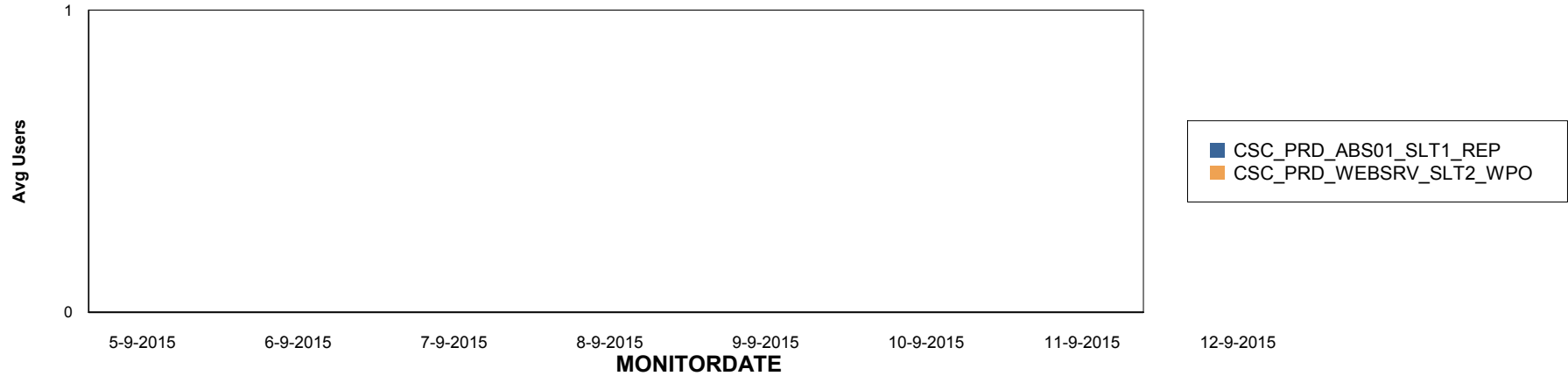
Weekly SLA Customer Report

Customer CSC_Production
Database ID 50

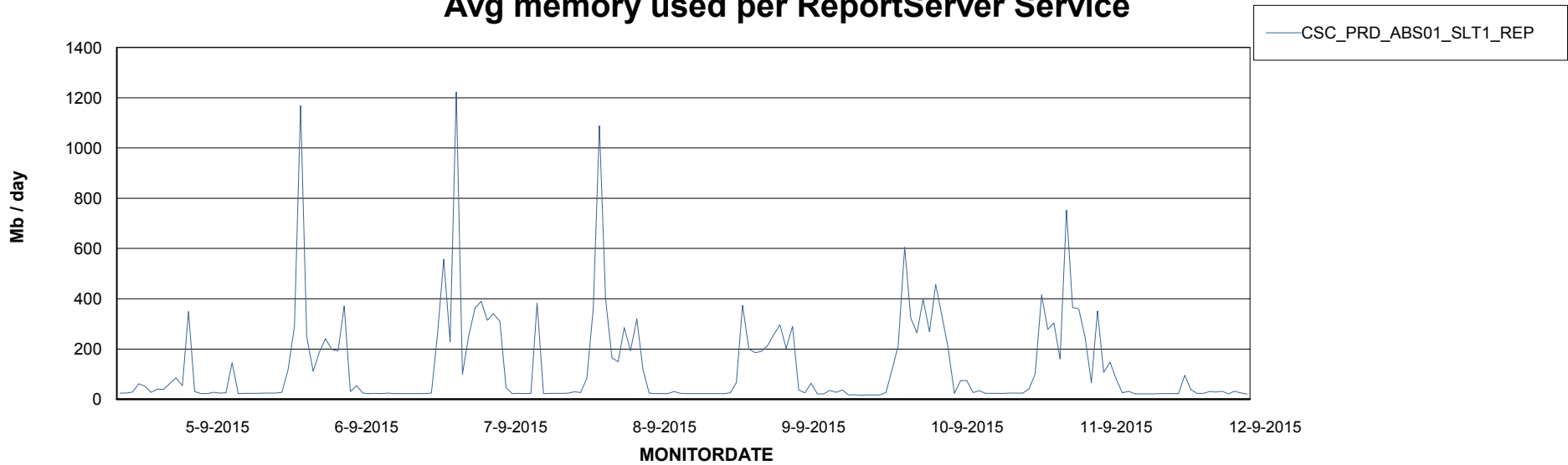


=====
ABSolute Application ReportServer Services
=====

Disaster per ReportServer



Avg memory used per ReportServer Service



Weekly SLA Customer Report

Customer CSC_Production
Database ID 50



Disaster per ABS component

