

Weekly SLA Customer Report

Customer CLO Production
 Database ID 38



=====
 HARDDISK USAGE CLO_PRD_CLO_ORACLE_001
 =====

	Total disk space on C (GB)	Free disk space on C (GB)	Total disk space on D (GB)	Free disk space on D (GB)	Total disk space on E (GB)	Free disk space on E (GB)
12-9-2015	137	38	137	62	107	64
11-9-2015	137	38	137	64	107	57
10-9-2015	137	38	137	64	107	59
9-9-2015	137	38	137	64	107	63
8-9-2015	137	38	137	63	107	66
7-9-2015	137	38	137	64	107	70
6-9-2015	137	38	137	64	107	71

=====
 HARDDISK USAGE CLO_PRD_CLO_ORACLE_002
 =====

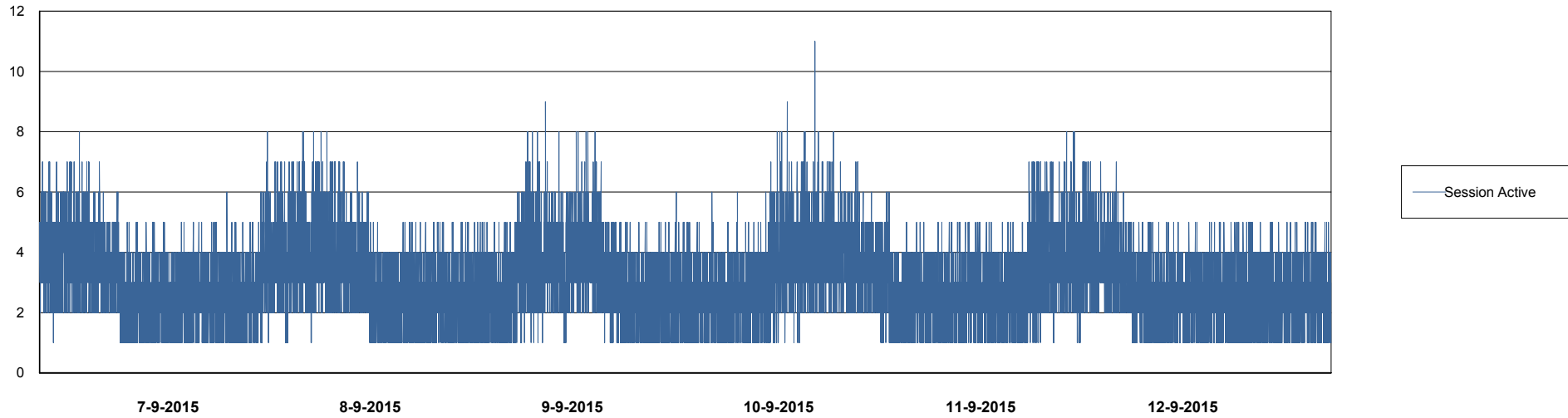
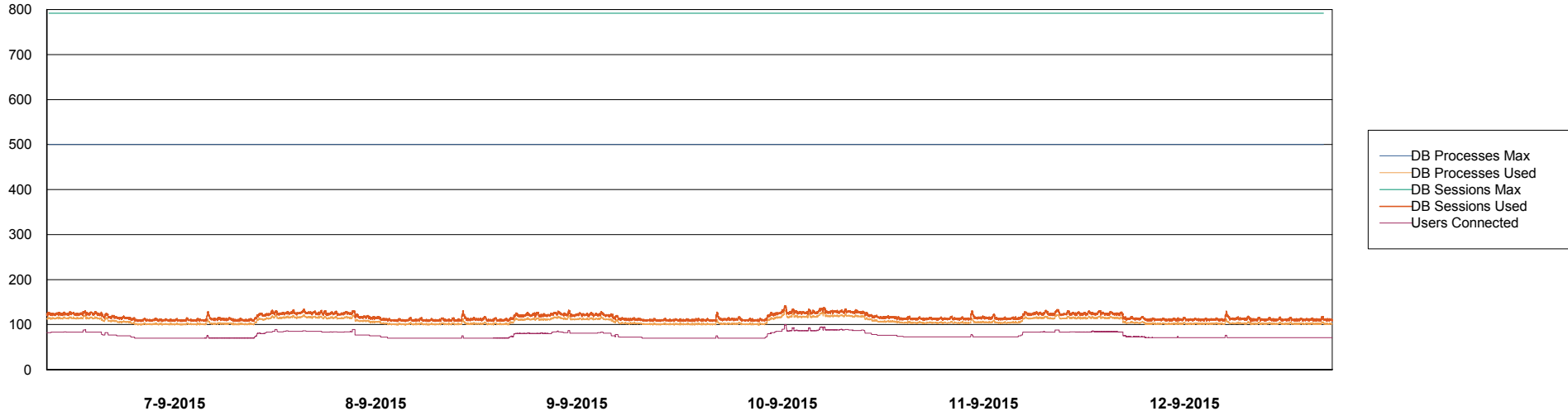
	Total disk space on C (GB)	Free disk space on C (GB)	Total disk space on D (GB)	Free disk space on D (GB)	Total disk space on E (GB)	Free disk space on E (GB)
12-9-2015	137	21	137	37	107	78
11-9-2015	137	21	137	37	107	70
10-9-2015	137	22	137	37	107	71
9-9-2015	137	22	137	37	107	73
8-9-2015	137	22	137	37	107	74
7-9-2015	137	22	137	37	107	76
6-9-2015	137	22	137	37	107	77

Weekly SLA Customer Report

Customer CLO Production
Database ID 38



DATABASE PERFORMANCE CLODB_Production

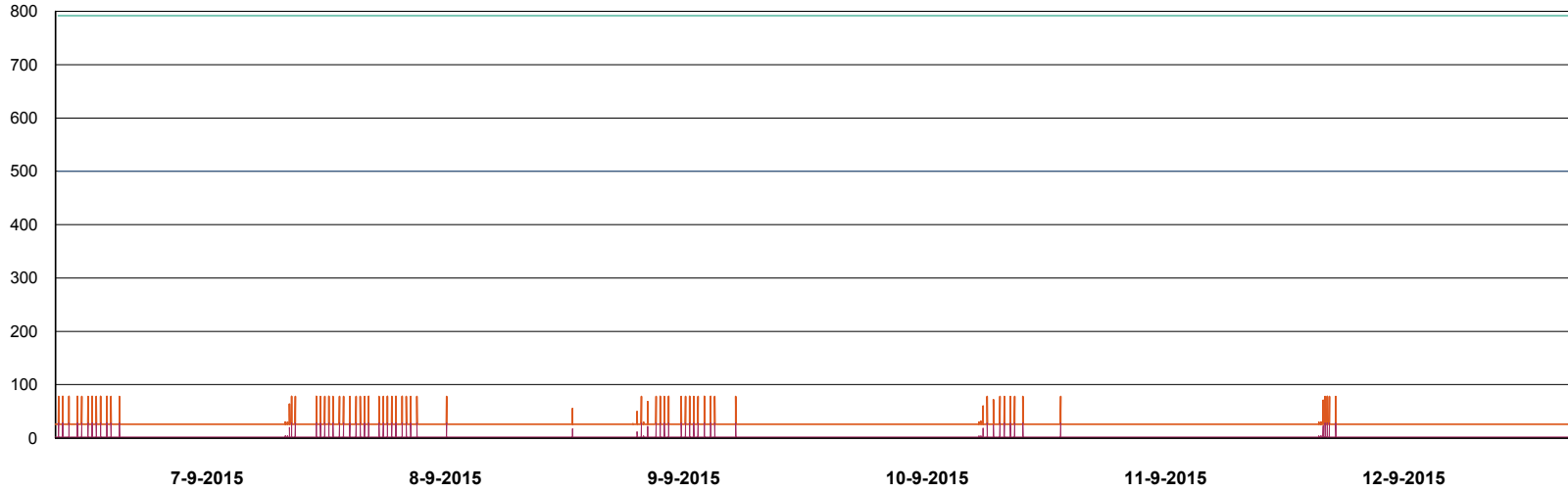


Weekly SLA Customer Report

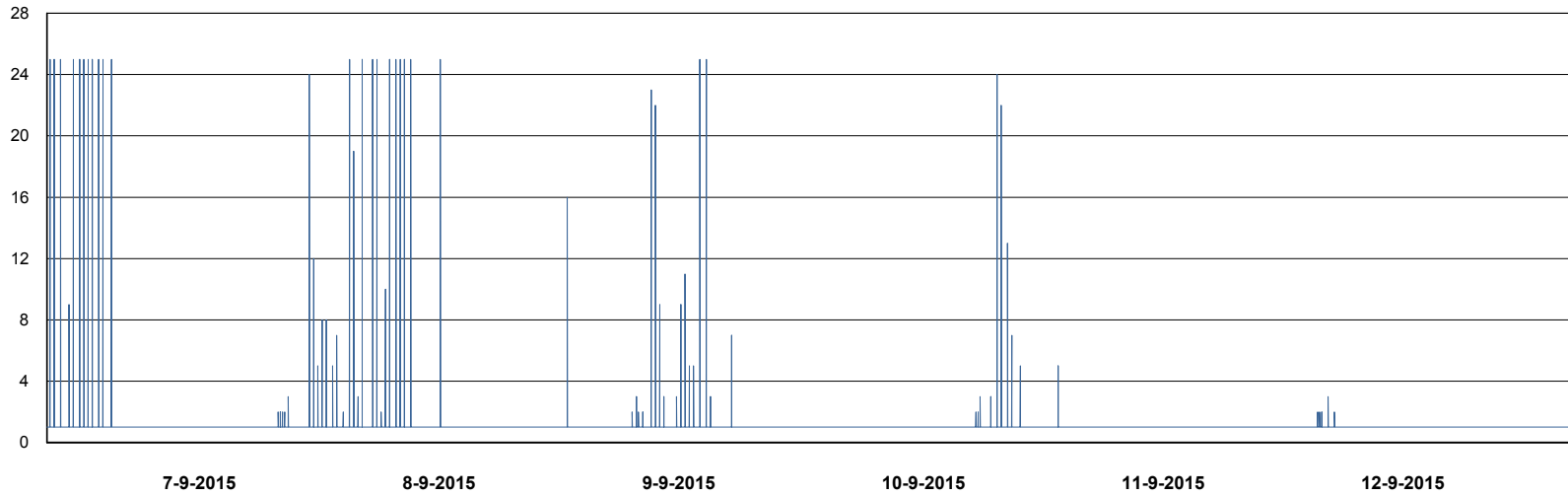
Customer CLO Production
Database ID 38



DATABASE PERFORMANCE CLODB_Standby



- DB Processes Max
- DB Processes Used
- DB Sessions Max
- DB Sessions Used
- Users Connected



- Session Active

Weekly SLA Customer Report

Customer CLO Production
 Database ID 38

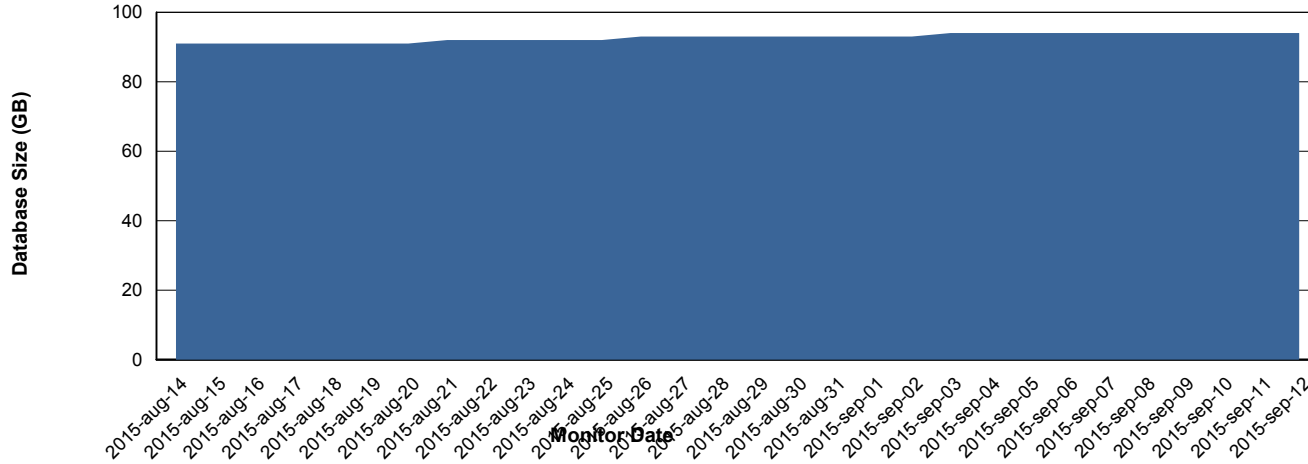


=====

DATABASE SIZE CLODB_Production

=====

Database growth over last month



=====

DATABASE TABLESPACES CLODB_Production

=====

TOTAL DATABASE SIZE PER TABLESPACE

Date	Tablespace Name	Filesize (Gb)	Usedsize (Gb)	Percentage free
12-9-2015	ABSDATA	50	49	2
	INDX	50	45	10
11-9-2015	ABSDATA	50	49	2
	INDX	50	45	10
10-9-2015	ABSDATA	50	49	2
	INDX	50	45	10
9-9-2015	ABSDATA	50	49	2
	INDX	50	45	10
8-9-2015	ABSDATA	50	49	2
	INDX	50	44	12
7-9-2015	ABSDATA	50	49	2
	INDX	50	44	12
6-9-2015	ABSDATA	50	49	2
	INDX	50	44	12

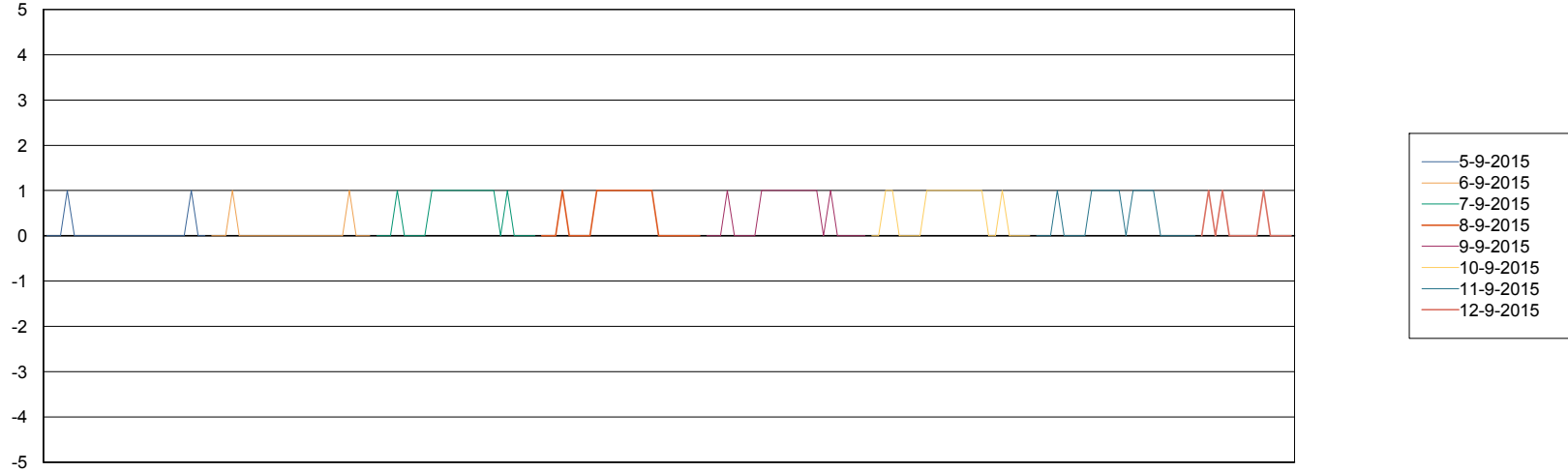
Weekly SLA Customer Report

Customer CLO Production
Database ID 38



=====
STANDBY DATABASE HEALTH CLO Production
=====

Recovery lag for last 7 days



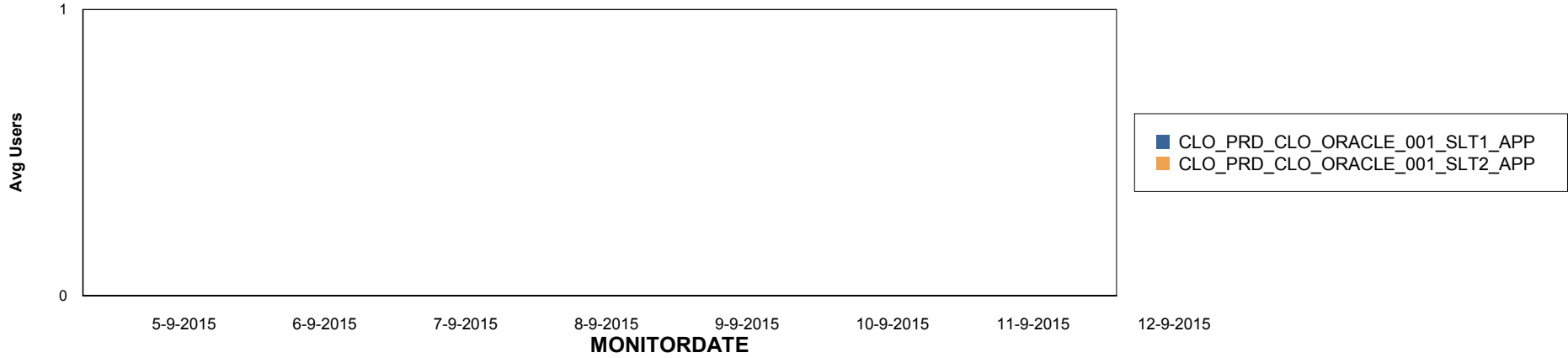
Weekly SLA Customer Report

Customer CLO Production
Database ID 38

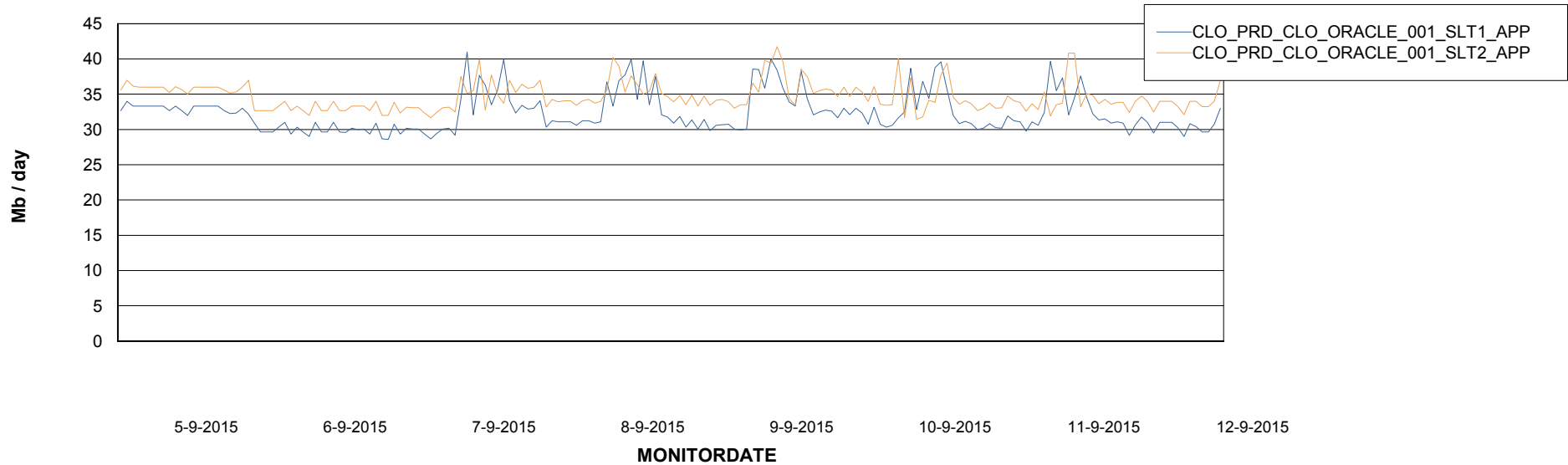


=====
ABSolute Application Server Services
=====

Disaster per ABS Server



Avg memory used per ABS Server Service



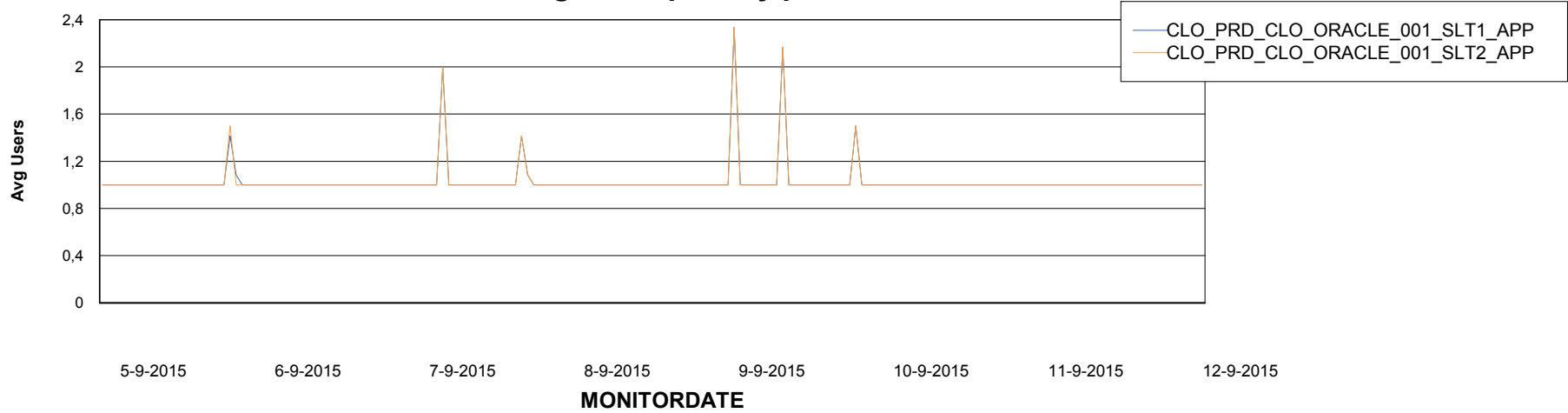
Weekly SLA Customer Report

Customer CLO Production
Database ID 38



=====
ABSolute Application Server Services
=====

Avg users per day per ABS server



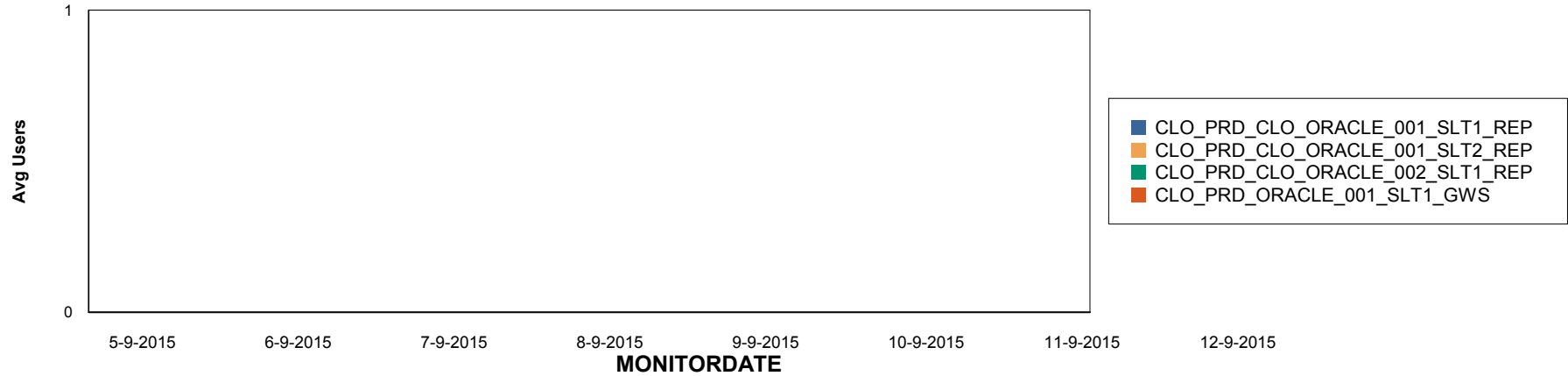
Weekly SLA Customer Report

Customer CLO Production
Database ID 38

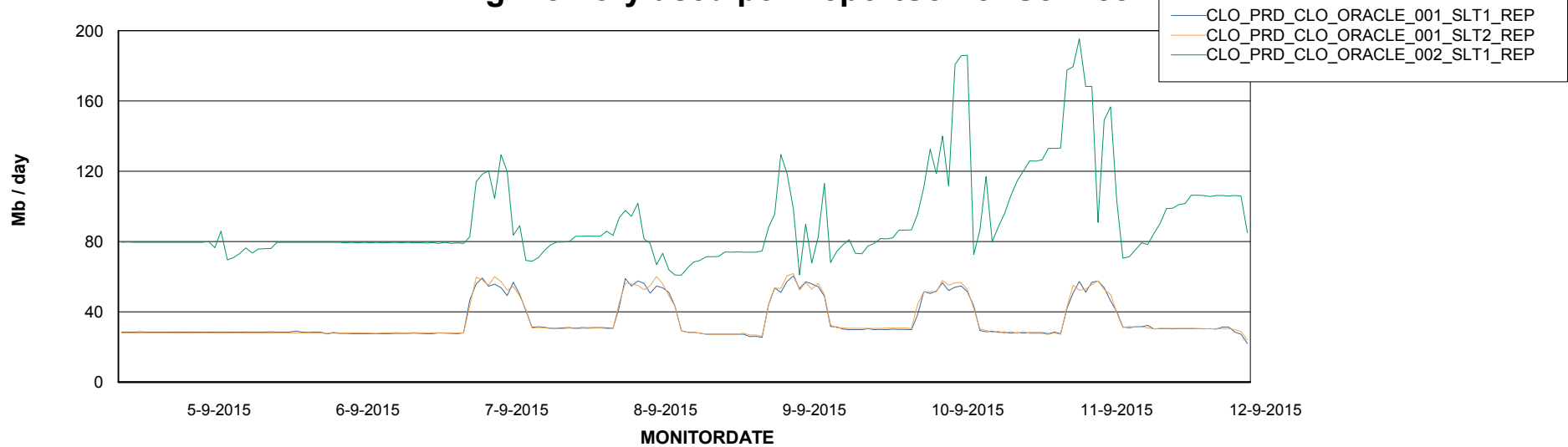


=====
ABSolute Application ReportServer Services
=====

Disaster per ReportServer



Avg memory used per ReportServer Service



Weekly SLA Customer Report

Customer CLO Production
Database ID 38



Disaster per ABS component

